



BLU Gateway Shelly Plus 1PM User Guide

[Home](#) » [Shelly](#) » BLU Gateway Shelly Plus 1PM User Guide 

Contents

- [1 BLU Gateway Shelly Plus 1PM](#)
- [2 Product Usage Instructions](#)
- [3 Pairing a Shelly BLU device to a Bluetooth enabled Shelly](#)
- [4 Documents / Resources](#)
 - [4.1 References](#)
- [5 Related Posts](#)



BLU Gateway Shelly Plus 1PM



Specifications:

- Product Name: Shelly BLU Gateway
- Compatibility: Bluetooth enabled Shelly devices
- Function: Acts as a Bluetooth gateway for Shelly BLU devices
- Power Requirement: Requires installation and power source
- Mobile App: Shelly Smart Control application

Product Usage Instructions

1. Step 1: Preparation

Open the Shelly Smart Control application on your mobile phone and sign in. Ensure that your phone's Bluetooth is turned on.

2. Step 2: Add Device

Select "Add Device" within the app and choose to add via Bluetooth.

3. Step 3: Configuration

Enter the existing Wi-Fi credentials and set a device name along with a picture. Assign the device to a specific room and save the settings.

4. Step 4: Enable Bluetooth Gateway

In the app, navigate to Networks -> Bluetooth -> Enable. Confirm the action and reboot if necessary to enable the Bluetooth Gateway function.

5. Step 5: Firmware Update

Check and update the firmware version of the Shelly Bluetooth gateway to the latest version to ensure compatibility with BLU devices.

6. Step 6: Pairing BLU Devices

In the app, press and hold the button on the BLU device you wish to pair. Follow the on-screen instructions to complete the pairing process.

7. Step 7: Finalize Connection

Once paired, ensure the BLU device is connected to the Bluetooth gateway. Select a room for the device and complete the setup process.

Congratulations! Your Shelly BLU device is now successfully paired and connected to the Bluetooth gateway.

FAQ:

- **Q: Can Shelly BLU devices connect directly to Wi-Fi networks?**

A: No, Shelly BLU devices need a Bluetooth-enabled Shelly device, such as the Shelly BLU Gateway or Shelly Plus 1PM, to act as a gateway for connectivity.

- **Q: How do I update the firmware on the Shelly Bluetooth gateway?**

A: Navigate to Settings -> Firmware version within the app, check for updates, and proceed with updating if a newer version is available.

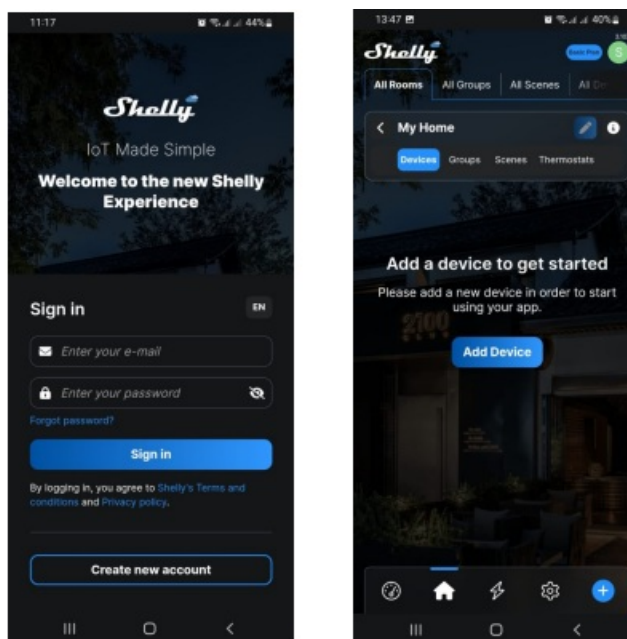
Pairing a Shelly BLU device to a Bluetooth enabled Shelly

- The following guide is to configure a Shelly Bluetooth enabled device, to function as a Bluetooth gateway for a range of Shelly BLU devices, as they cannot connect directly to the Wi-Fi network.
- Device examples: Shelly BLU Gateway and Shelly Plus 1PM
-

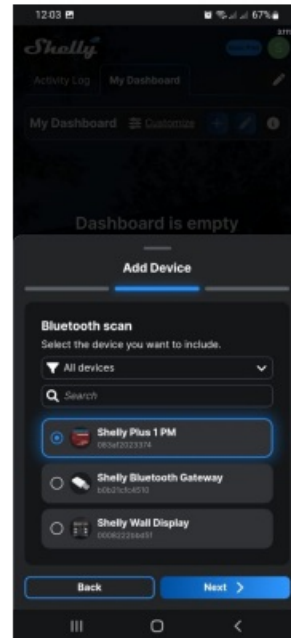
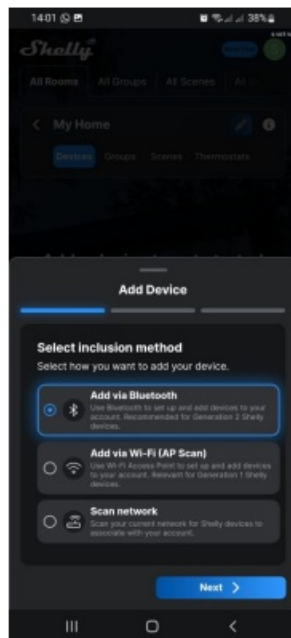


The Shelly devices require installation and to be powered on to start with the configuration.

1. Step 1: Open the Shelly Smart Control application on your mobile phone and sign in. Make sure the phone's Bluetooth is turned on.
2. Step 2: Add the Shelly Bluetooth enabled device to the required room by selecting Add Device.

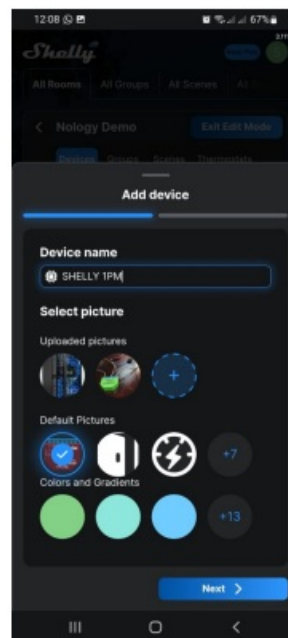
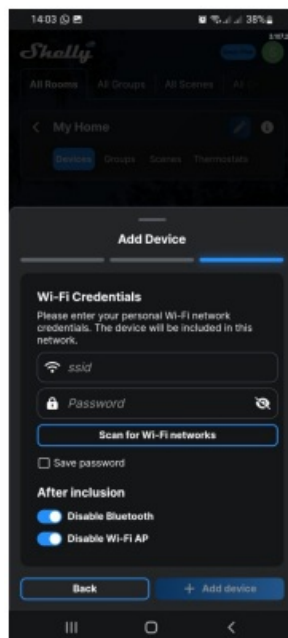


3. Step3: Select Add via Bluetooth and next.
4. Step 4: Select the device and Next.



5. Step 5: Enter the existing Wi-Fi credentials and select Add device.

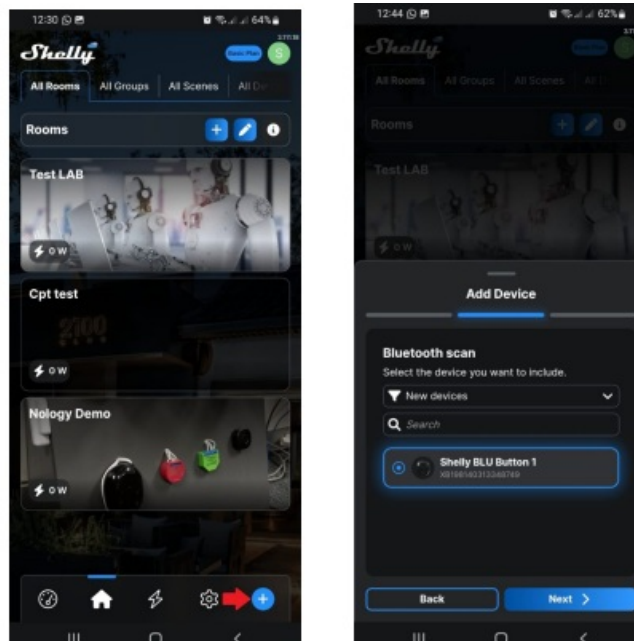
6. Step 6: Enter a Device name -> Select a picture -> Next.



7. Step 7: Select a Room and Save.

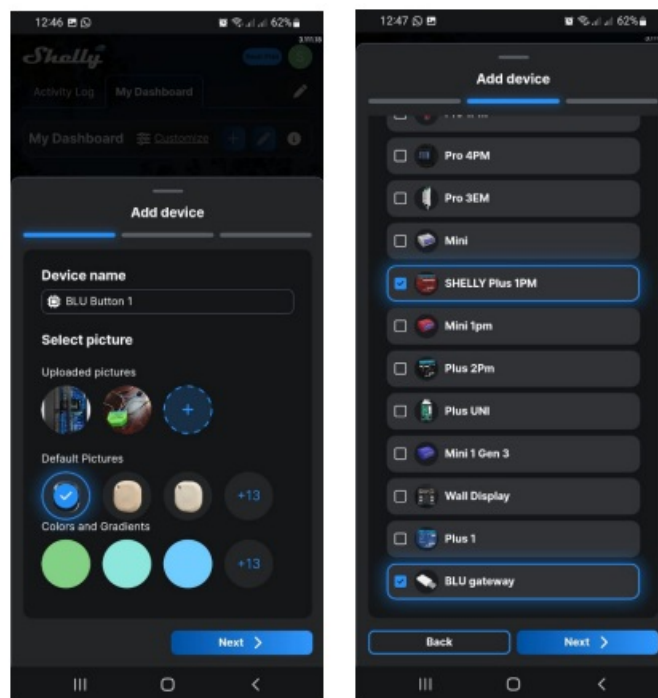
8. Step 8: Select the newly added device.

9.



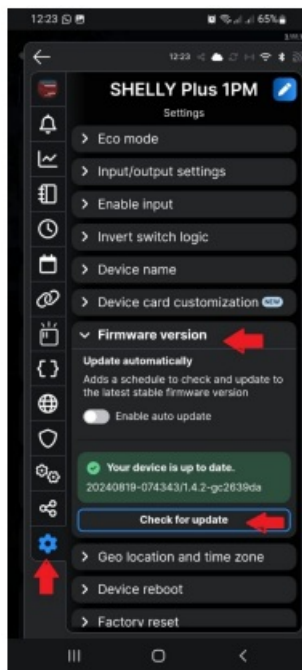
Step 9: We need to enable the Bluetooth Gateway function for the Shelly BLU devices to pair and connect.

10. Step 10: Select Networks -> Bluetooth -> Enable -> Confirm -> Reboot.

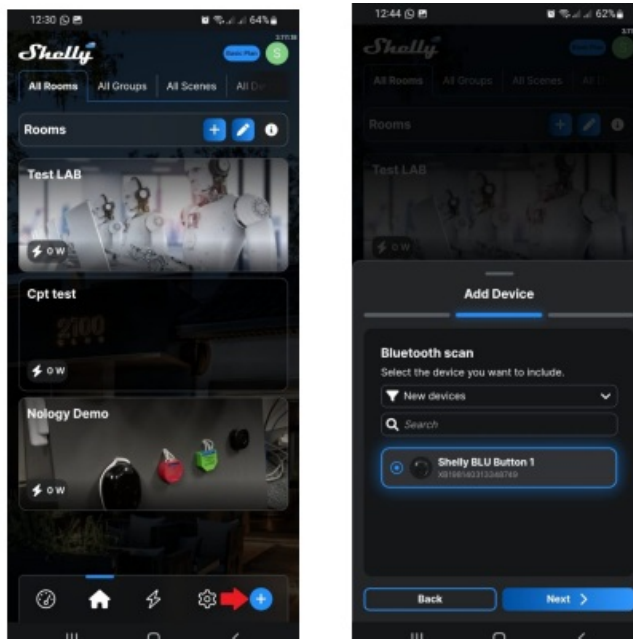


11. Step 11: The firmware on the Shelly Bluetooth gateway must be on the latest version before adding any BLU devices.

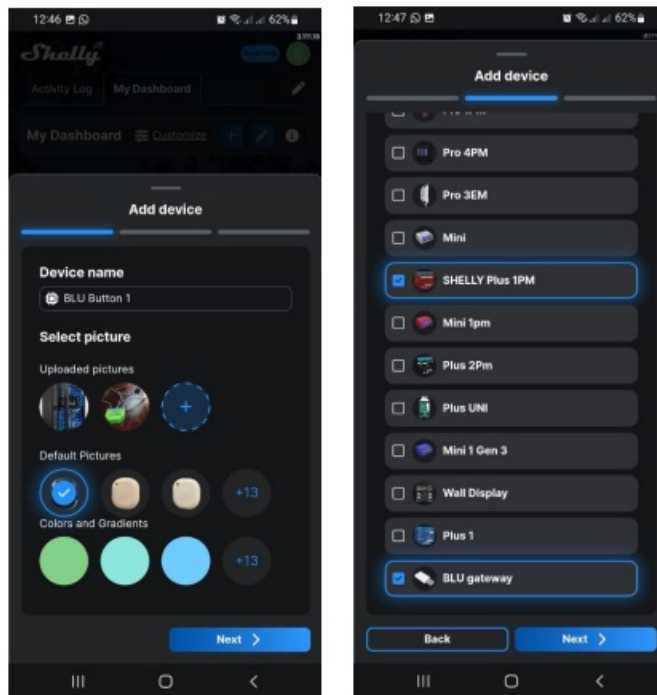
12. Step 12: Select Settings -> Firmware version -> Check for update and update if one is available.



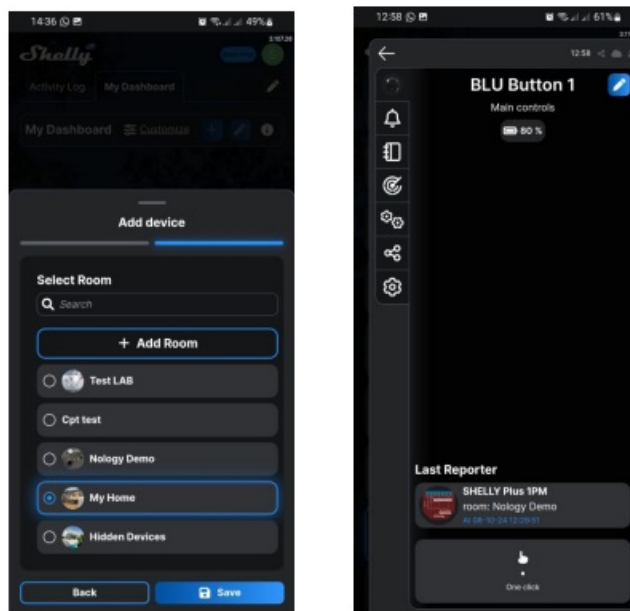
13. Step 13: Navigate back to the room and select + to add a new device.
14. Step 14: Press and hold the button on the BLU device you wish to add to start the pairing process.
15. Step 15: Select the device and click next.
- 16.



- Step 16: Click the button on the BLU device when prompted -> Add a name -> Click Next.
17. Step 17: The list of available Bluetooth Gateways will be preselected -> Click Next.
- 18.




Step 18 Select a Room -> Click Next.



Congratulations! The new Shelly BLU device is paired and connected to the Bluetooth gateway.

Documents / Resources

	<p>Shelly BLU Gateway Shelly Plus 1PM [pdf] User Guide</p> <p>BLU Gateway Shelly Plus 1PM, Gateway Shelly Plus 1PM, Shelly Plus 1PM, Plus 1PM</p>
---	---

References

- [User Manual](#)

[Manuals+](#), [Privacy Policy](#)

This website is an independent publication and is neither affiliated with nor endorsed by any of the trademark owners. The "Bluetooth®" word mark and logos are registered trademarks owned by Bluetooth SIG, Inc. The "Wi-Fi®" word mark and logos are registered trademarks owned by the Wi-Fi Alliance. Any use of these marks on this website does not imply any affiliation with or endorsement.