

# Shell Recharge Dynamic Power Management Installation Guide

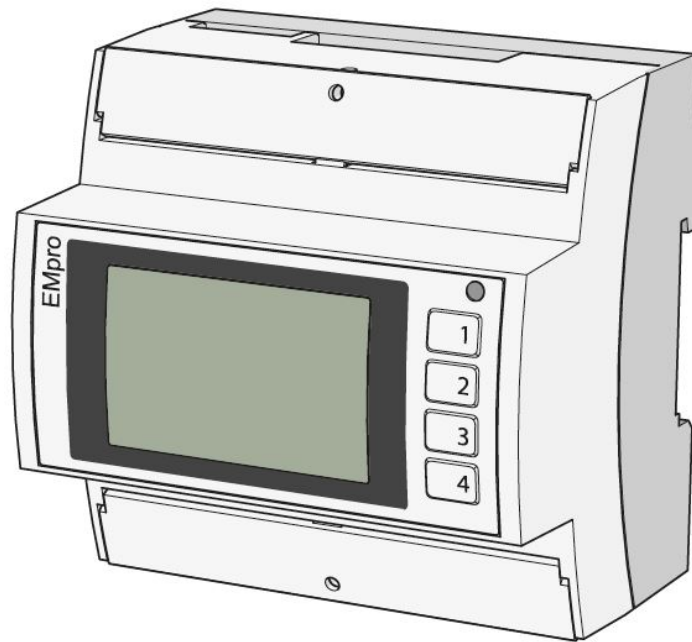
[Home](#) » [Shell Recharge](#) » Shell Recharge Dynamic Power Management Installation Guide 

## Contents

- [1 Shell Recharge Dynamic Power Management](#)
- [2 Quick Installation](#)
  - [2.1 Disclaimer](#)
- [3 Wiring](#)
- [4 Documents / Resources](#)
- [5 Related Posts](#)



**Shell Recharge Dynamic Power Management**



### **Extended manual**

For more information see the extended manual online: [shellrecharge.com/installer](https://shellrecharge.com/installer).



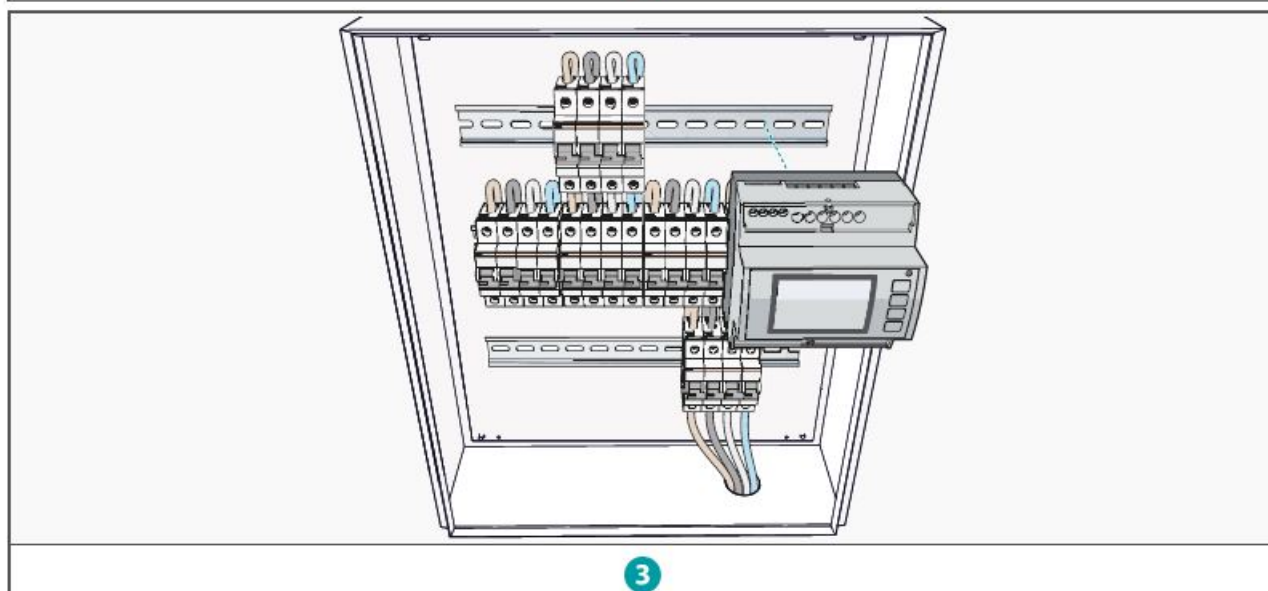
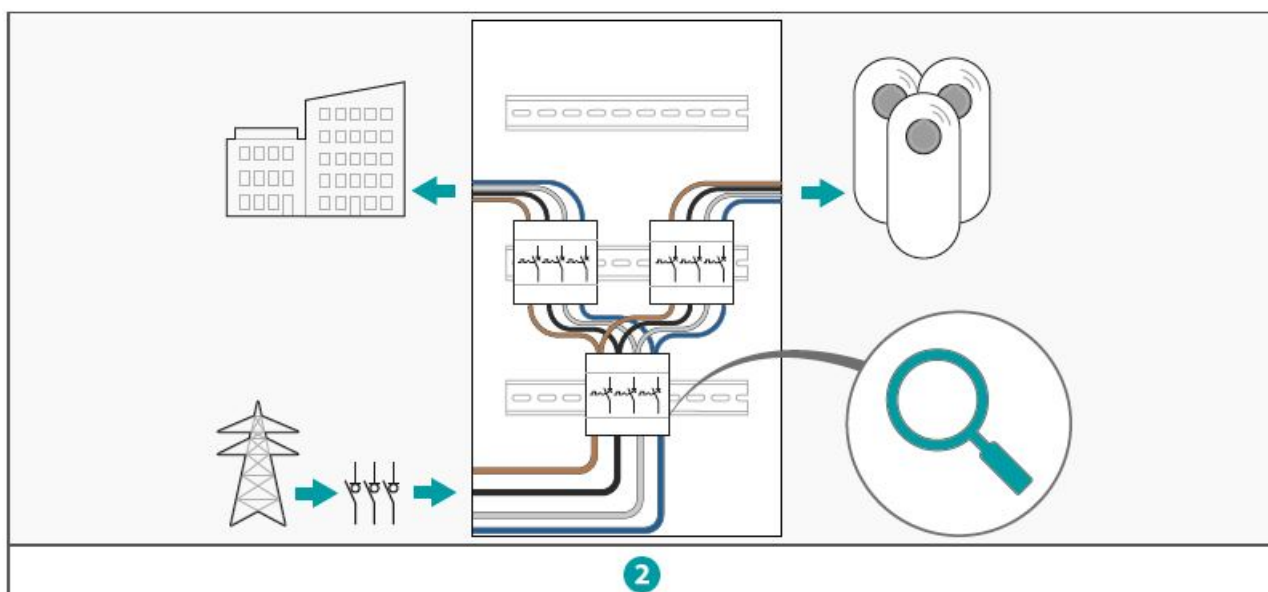
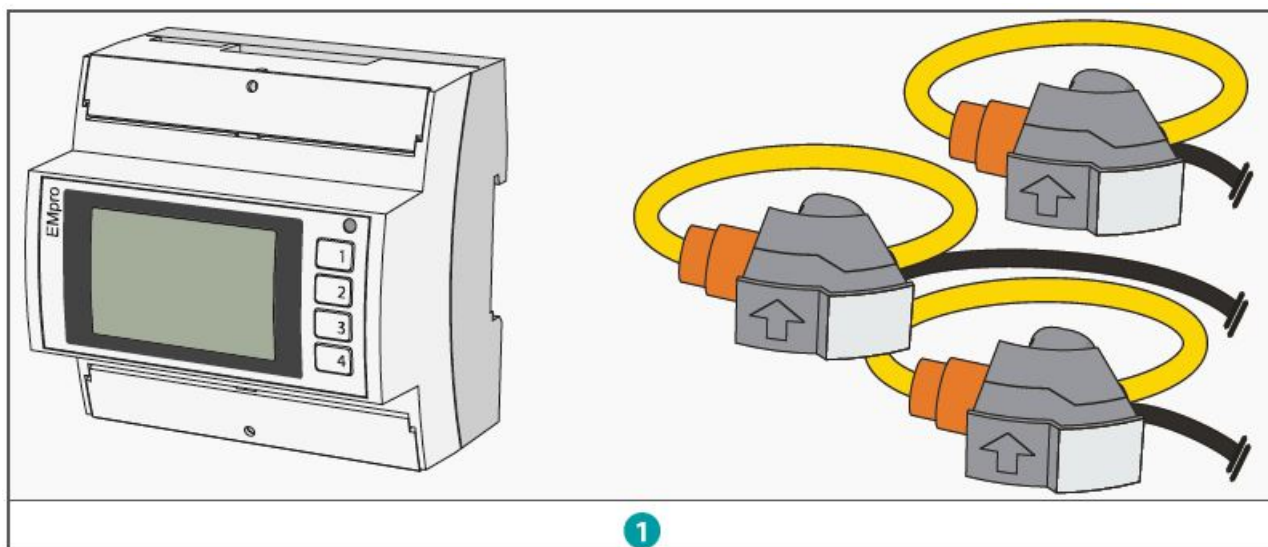
## **Quick Installation**

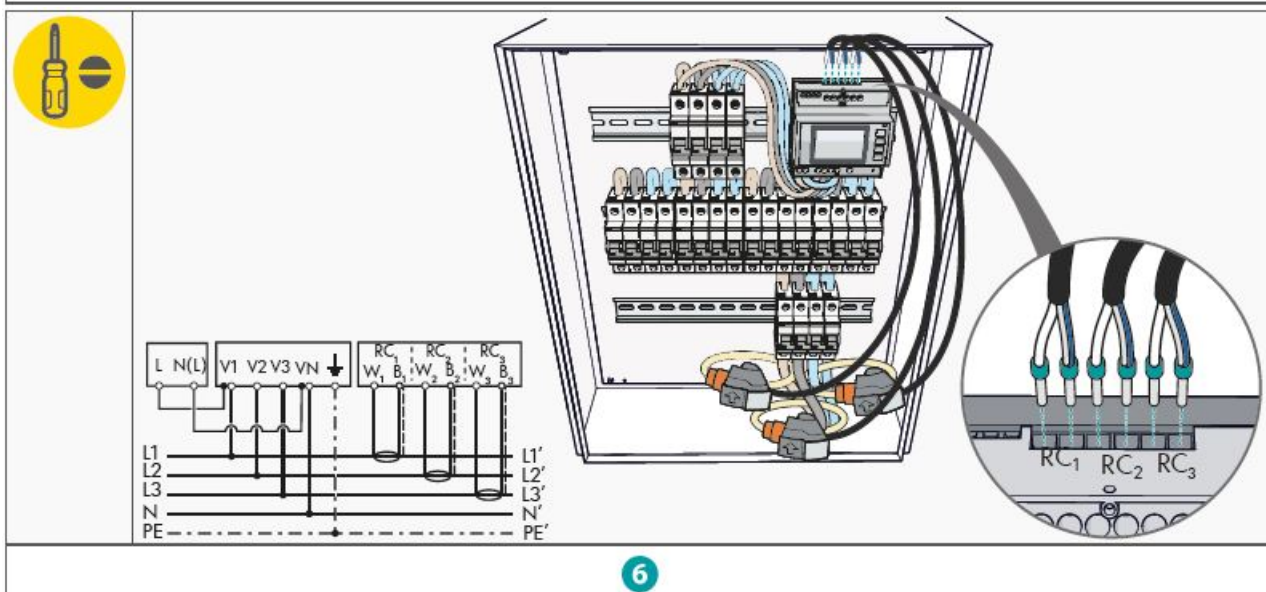
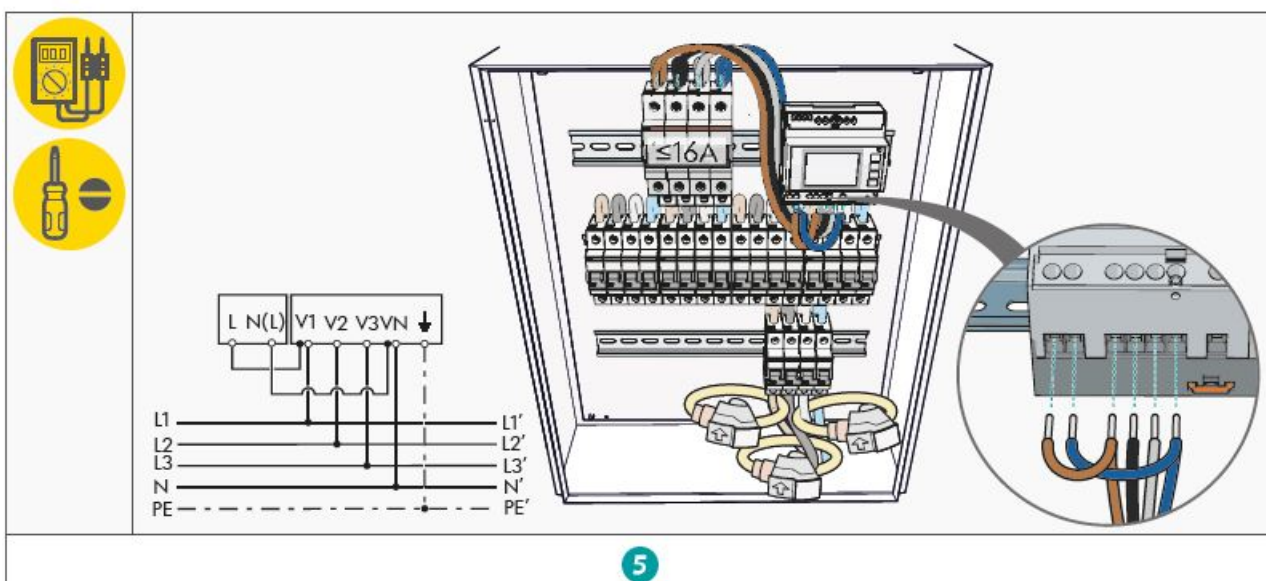
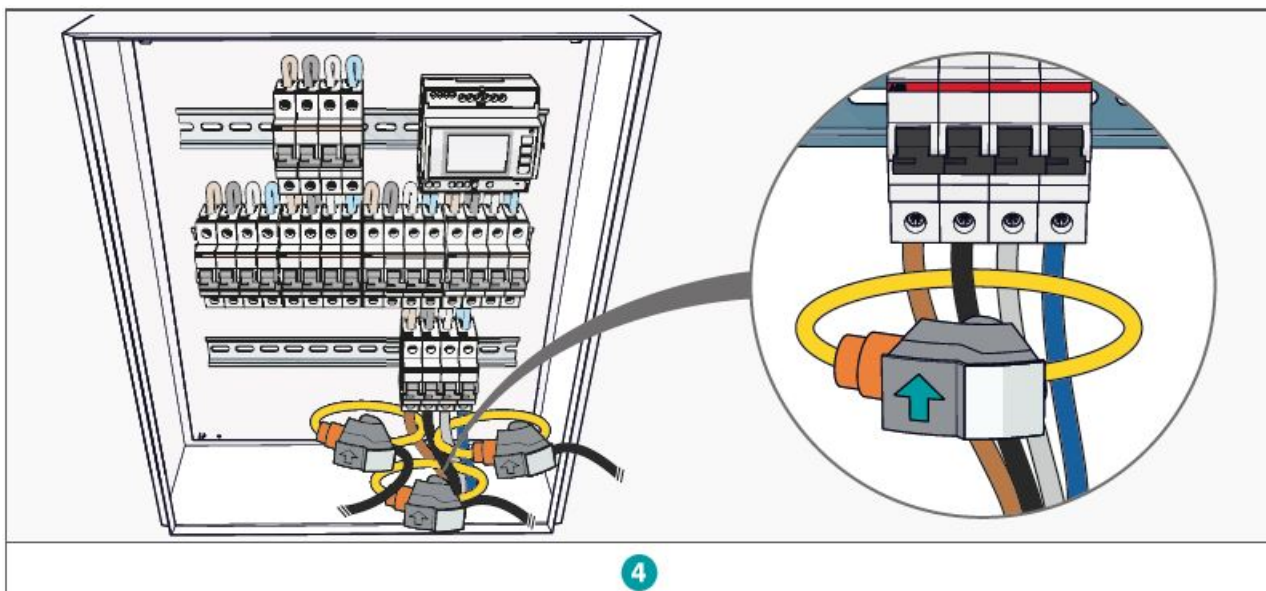
### **Disclaimer**

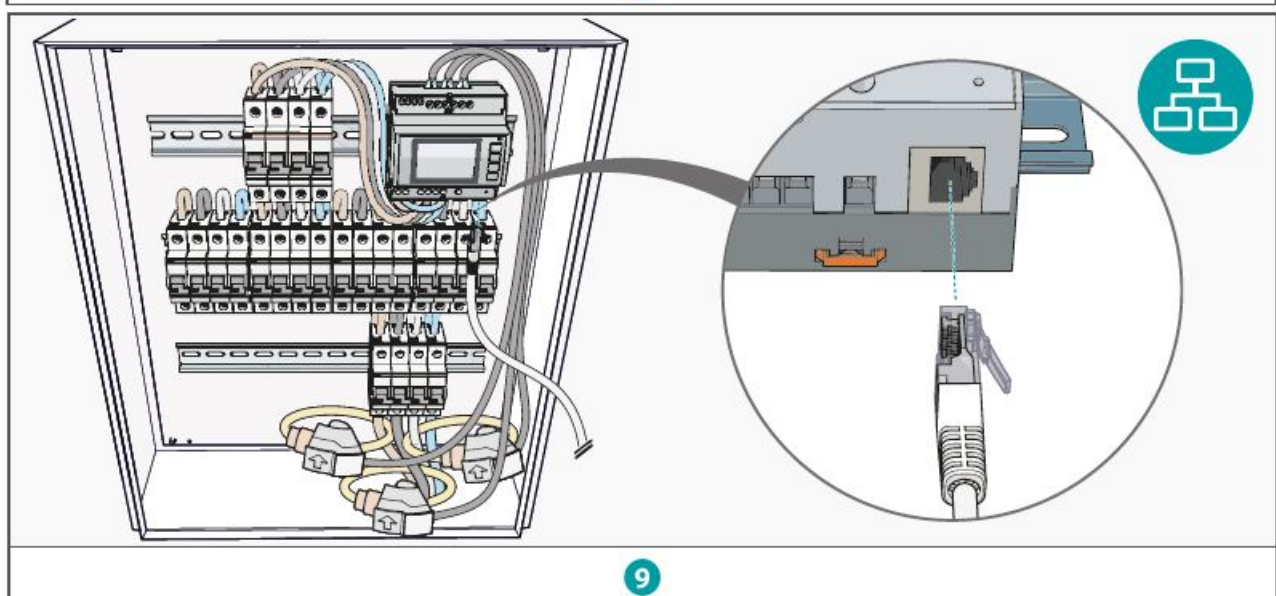
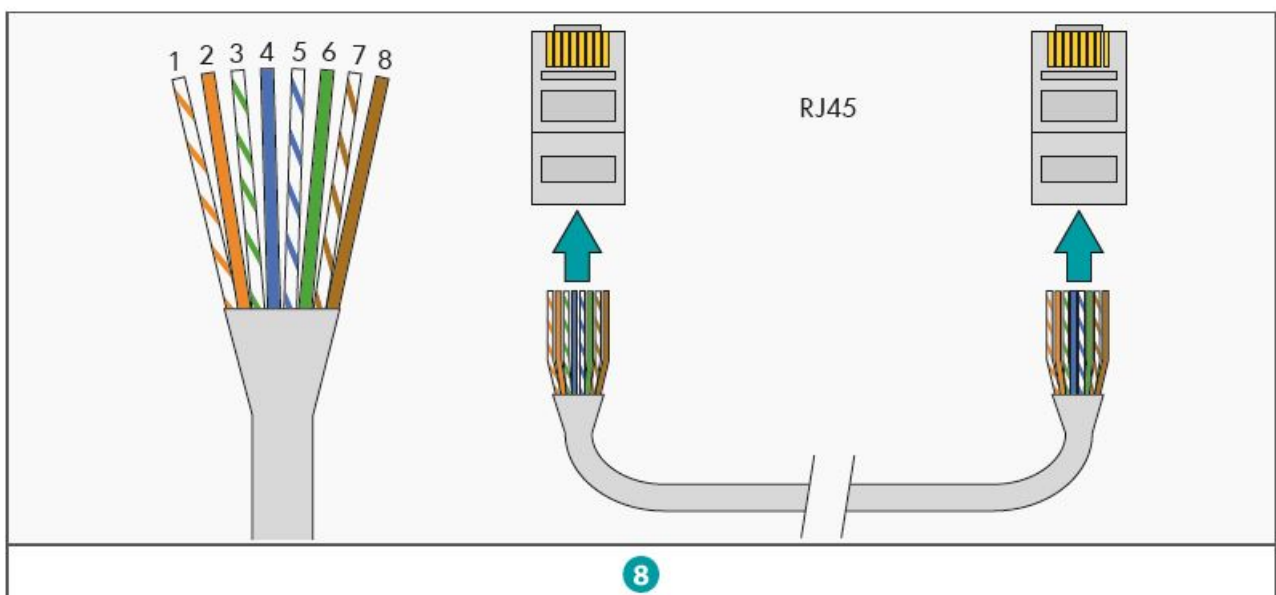
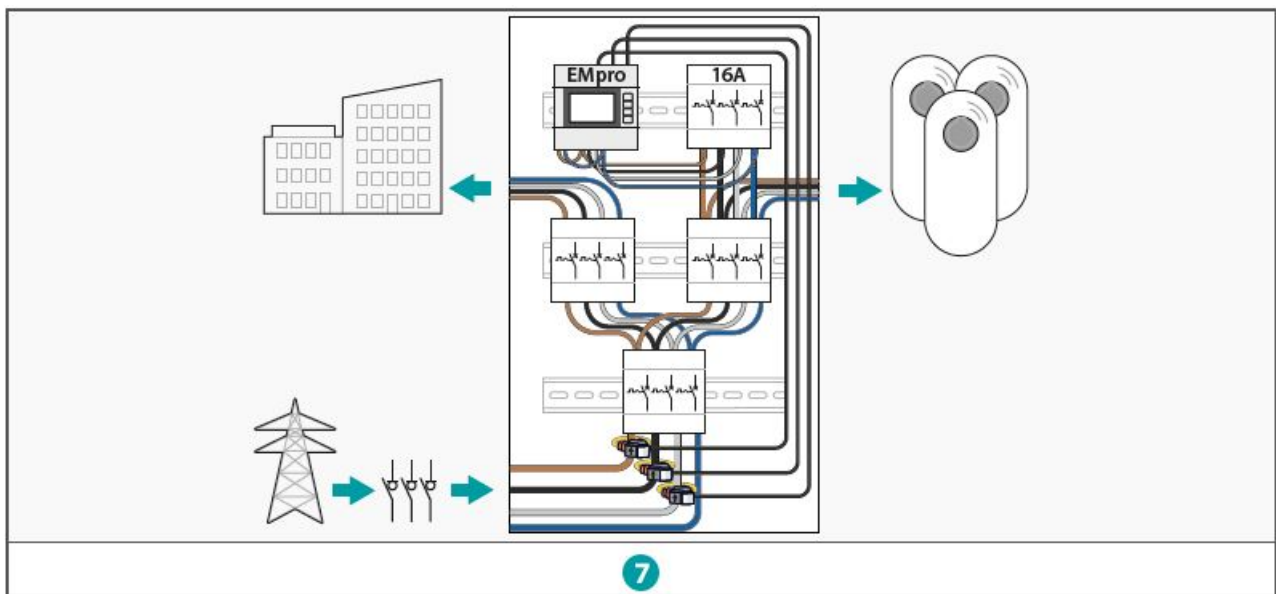
This document is the Quick Installation Guide of the DPM for Business product. Use the QR code or URL to see the comprehensive online installation manual. Installation must only be carried out by a trained and certified technician who has fully read and understood the contents of this document and the comprehensive manual and is familiar with this type of electrical installation.

### **DANGER!**

Always make sure that the power supply is shut off before installing the product or performing maintenance. Installation with a live power supply can result in severe injury or even death.

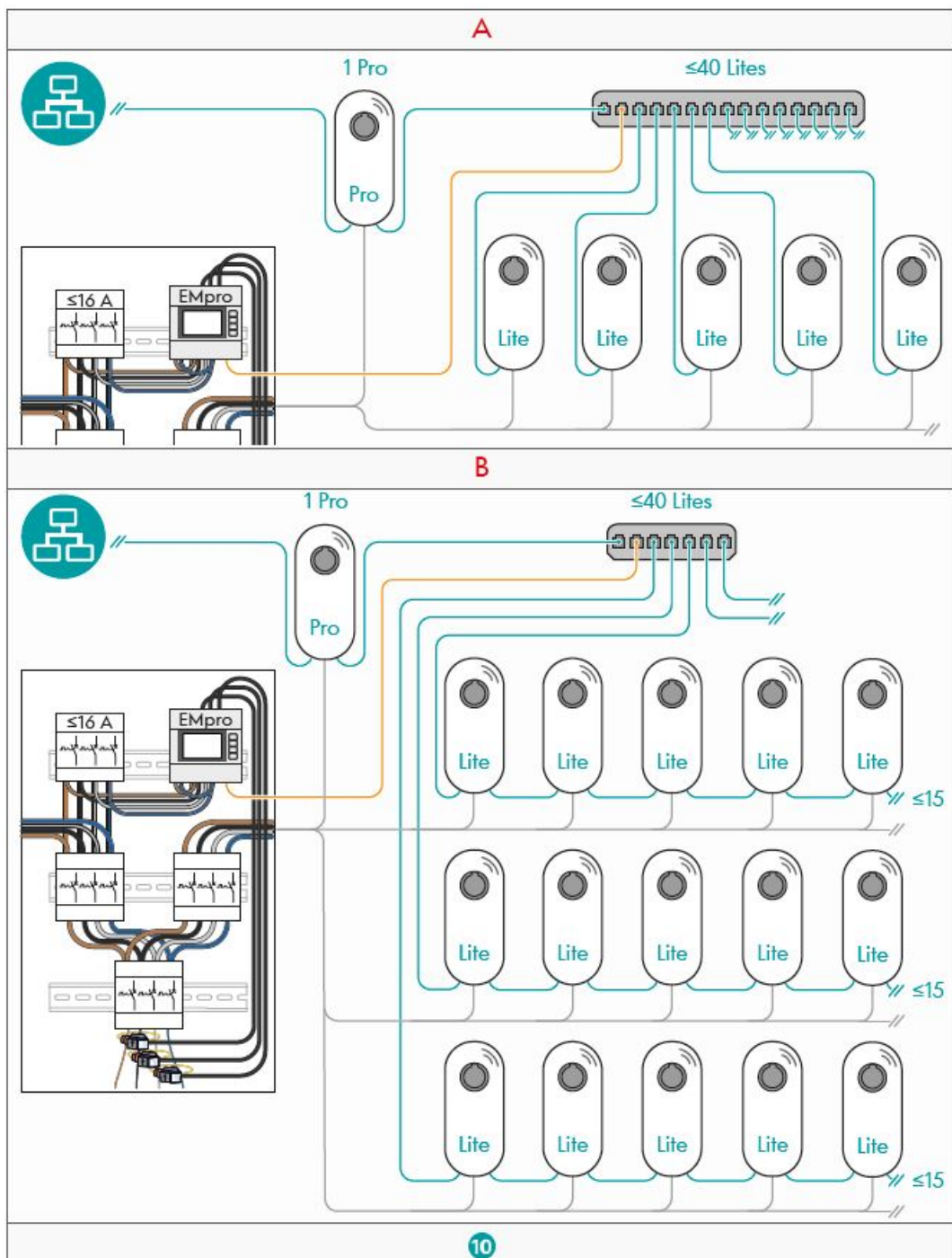






## Wiring



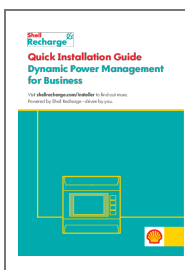


DPMBSR21QIG01 | 02/2022

**Manufactured by:**

Shell EV Charging Solutions B.V. Rigakade 20, 1013 BC | Amsterdam, The Netherlands +31880109500 | [www.shellrecharge.com](http://www.shellrecharge.com).

**Documents / Resources**



[Shell Recharge Dynamic Power Management \[pdf\]](#) Installation Guide  
 DPMBSR21QIG01, Dynamic Power Management, Power Management

