



## Sharper Image Tabletop Fireplace Assembly & Refill Instructions Manual

[Home](#) » [Sharper Image](#) » Sharper Image Tabletop Fireplace Assembly & Refill Instructions Manual 

### USER MANUAL



Thank you for purchasing the Sharper Image Tabletop Fireplace. Please read these instructions prior to using this device the bio ethanol fireplace for the first time. Noncompliance with the safety rules can cause serious burns, or even a fire.

## Contents

### 1 INCLUDED ITEMS

### 2 ASSEMBLY INSTRUCTIONS

### 3 WARNINGS

### 4 FIRST AID MEASURES

### 5 WARRANTY/CUSTOMER SERVICE

### 6 Questions about your Manual? Post in the comments!

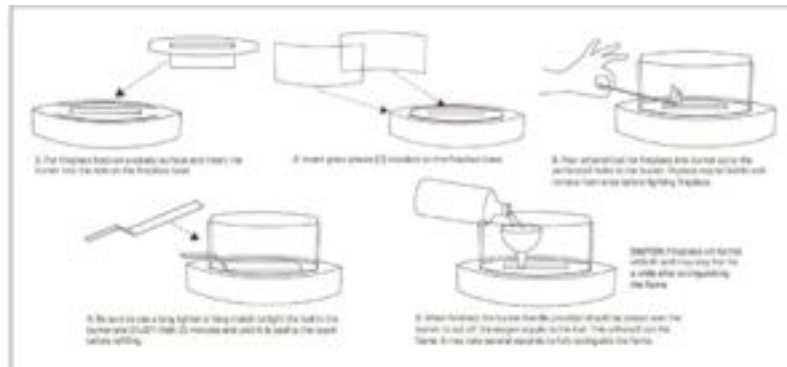
#### 6.1 Related Posts

## INCLUDED ITEMS

- Fireplace Base
- Burner
- 2 Glass Screens
- 1 Burner Handle

## ASSEMBLY INSTRUCTIONS

Unpackage all items from the box on a soft surface or towel to avoid scratches to your furniture, floors, or the fireplace. Note: We recommend you use a funnel for fuel. If any fuel does spill, you should always wipe it up prior to lighting your fireplace.



## WARNINGS

- To insure safe use, you must carefully read and adhere to ALL of the manufacturer's instructions.
- These instructions should be kept for reference for as long as you own the fireplace and should be provided to anyone planning to use this ethanol fireplace.
- Ethanol Fuel and fireplaces should ONLY be handled BY ADULTS. Keep children at a safe distance and never let them operate the fireplace or handle fuel.
- DO NOT allow children or pets near fireplace when burning.
- NEVER OPEN FUEL BOTTLE NEAR OPEN FLAME or leave uncapped near flame or any other ignition source.
- Do not fill fireplace or leave bottle on a stained or painted surface as it may damage the finish.
- CLEAN UP ANY FUEL THAT MAY HAVE SPILLED and make sure any surface moisture from spillage is gone or has evaporated before lighting.
- NEVER overfill your fuel reservoir. It is recommended that you fill fuel burner until fuel can be seen above the

perforated holes inside the burner.

- After filling your fireplace, be sure to replace bottle top and remove bottle from fireplace vicinity before lighting the fireplace. DO NOT TOUCH fireplace or glass while it is burning or immediately after burning.
- Only use a long BBQ/wand lighter or long match to ignite. Never attempt to ignite with any other device.
- When first lit, the flame may be nearly invisible. The same happens just before fuel runs out. At all times, be certain that the flame is out before refueling. To be safe, always double check that no flame is present before refilling by closing lid/damper.
- NEVER REFILL THE FUEL RESERVOIR WHILE THE FLAME IS BURNING OR UNIT IS HOT. Be sure fuel reservoir has cooled down for at least 15 minutes before attempting to add more fuel.
- Never store Ethanol Fuel in direct sunlight, or allow fuel to become heated. Always keep it in a dry cool area and store fuel a safe distance from fireplace, away from children. Keep fuel container closed.
- NEVER LEAVE A BURNING FIREPLACE UNATTENDED.
- Never attempt to move the fireplace while it is lit (burning) or is still hot.
- Never place any objects in the fireplace or near the flame (flammable or non-flammable).
- KEEP FLAMMABLE OBJECTS AT LEAST 4 FT AWAY FROM FIREPLACE WHILE LIT OR HOT.
- Use only ethanol fuel made specifically for replaces. Burning common alcohol found in drug stores and home improvement stores is DANGEROUS. Their emissions could be toxic and not safe to inhale indoors or even outdoors.
- ALWAYS READ FUEL SAFETY INSTRUCTIONS provided by fuel manufacturer.

## **FIRST AID MEASURES**

- Eyes: Immediately flush affected area with plenty of cool water. Flush eyes for at least 15 minutes. Seek immediate medical attention.
- Skin: Rinse exposed area well with water and wash with soap. If irritation persists, consult a physician or dermatologist.
- Ingestion: If the person is conscious and able to swallow, have them drink water or milk to dilute.
- Never give anything by mouth to a person who is unconscious or convulsing. Do not induce vomiting. Call a physician or poison control center immediately.
- Inhalation: Immediately move the person into fresh air. In case of breathing difficulties, administer artificial respiration. If there is no immediate improvement, seek medical assistance.

## **WARRANTY/CUSTOMER SERVICE**

Sharper Image branded items purchased from SharperImage.com include a 1-year limited replacement warranty. If you have any questions not covered in this guide, please call our Customer Service department at 1 (877) 210-3449. Customer Service agents are available Monday through Friday, 9:00 a.m. to 6:00 p.m. ET.

**SHARPER IMAGE®**

The SHARPER IMAGE® name and logo are registered trademarks.

©Sharper Image. All Rights Reserved.

**Read More About This User Manuals...**

[Sharper-Image-Tabletop-Fireplace-Assembly-Refill-Instructions-Manual-Optimized.pdf](#)

[Sharper-Image-Tabletop-Fireplace-Assembly-Refill-Instructions-Manual-Original.pdf](#)

---

**Questions about your Manual? Post in the comments!**

Manuals+.