



Sharper Image Laptop/Tablet Tray with Charger User Manual

[Home](#) » [Sharper Image](#) » Sharper Image Laptop/Tablet Tray with Charger User Manual 

Contents

[1 SHARPER
IMAGE®](#)

[2 Related Posts](#)

SHARPER IMAGE®

LAPTOP AND TABLET TRAY WITH BUILT-IN CHARGER

Item No. 204819

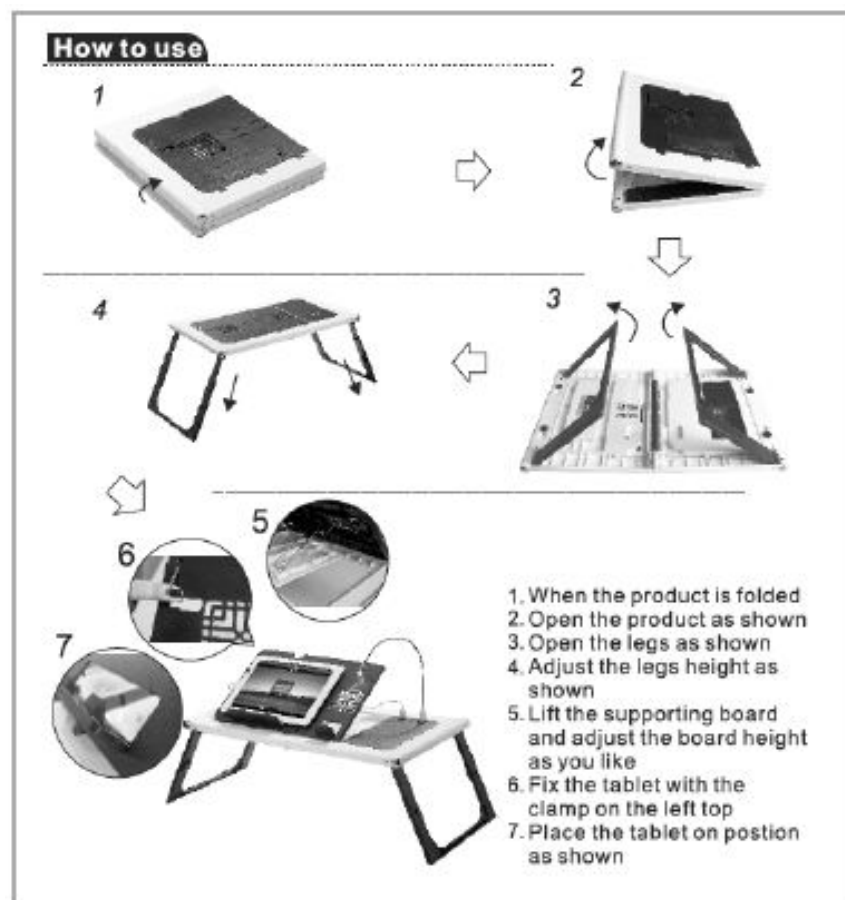


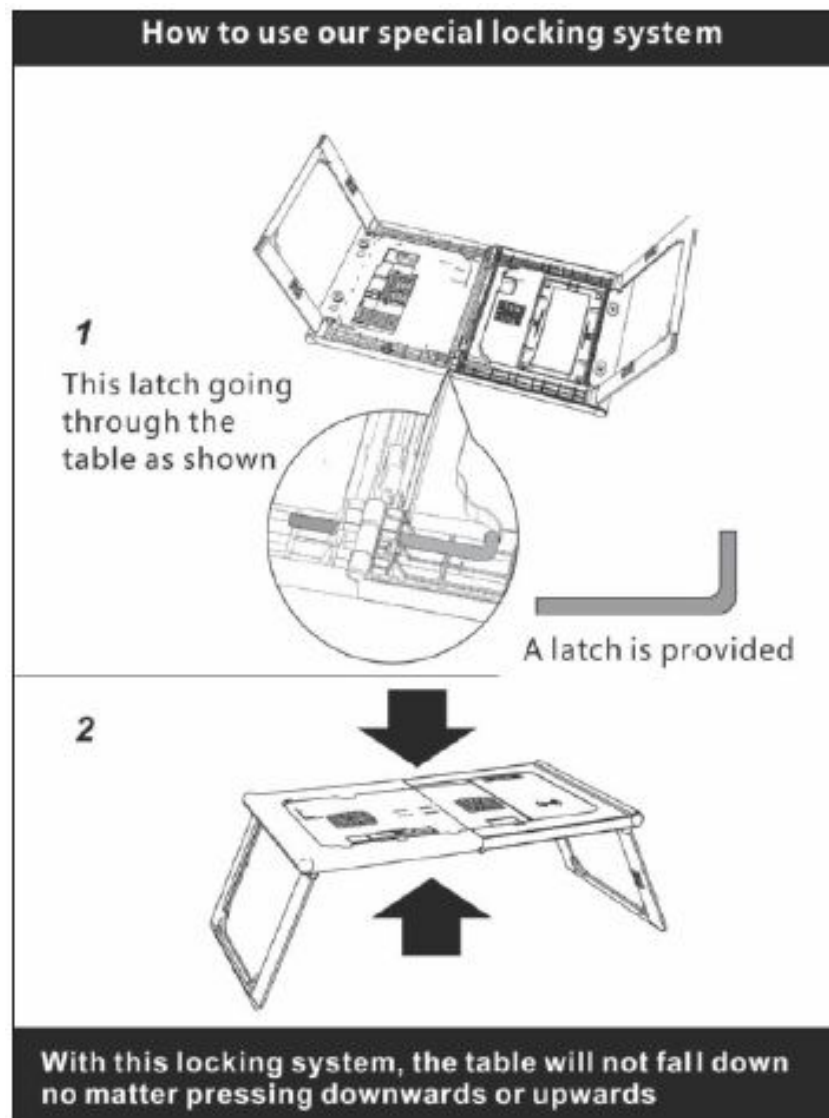
Thank you for purchasing the Sharper Image Laptop and Tablet Tray with Built-in Charger. The Laptop and Tablet Tray with Built-in Charger has a built-in power bank of 10,000 mAh that conveniently charges smartphones, tablets, music players, cameras and other portable devices. Please take a moment to read these instructions and keep them for future reference.

HOW TO USE THE LAPTOP AND TABLET TRAY WITH BUILT-IN CHARGER

Follow these steps to use your Laptop and Tablet Tray with Built-in Charger.

1. Unfold the product.
2. Adjust the legs and height of the product.
3. Lift the supporting board and adjust the board height to your liking with the clamp underneath the board.
4. The left side will fit your tablet device and the right your phone.
5. Use the included LED light when needed.
6. Plug the LED light into USB port: OUT 1A.
7. Press power on to turn the light on.





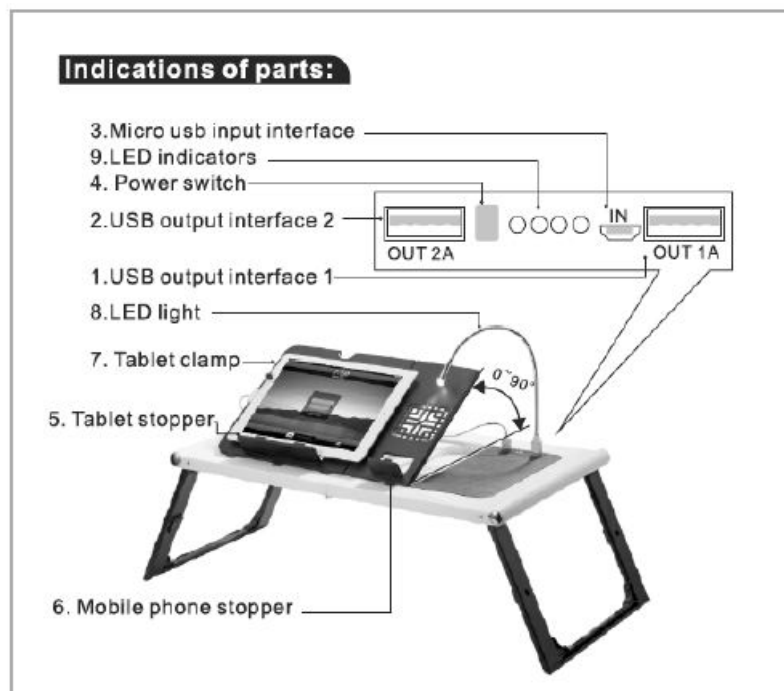
HOW TO CHARGE YOUR LAPTOP AND TABLET TRAY WITH BUILT-IN CHARGER

1. Connect the USB cable to input labeled IN on the product.
2. Plug the end of the USB the cable into the charging device (your computer can charge the Laptop and Tablet Tray with Built-in Charger).
3. The LED lights will blink blue when the device starts to charge.
4. To turn off the device, press power OFF button twice.

HOW TO CHARGE DEVICES WITH THE LAPTOP AND TABLET TRAY WITH BUILT-IN CHARGER

1. Connect the USB cable to the output labeled OUT1A or OUT2A port.
2. Plug the end of the USB into your device to charge (ex: smartphone).
3. The LED lights will blink blue when the device starts to charge.
4. Press the power button on the Laptop and Tablet Tray with Built-in Charger to turn off.

INDICATIONS OF PARTS



LED LIGHTS

Blinking blue- Normal charging

Blue- Stand-by or full

1 blue lights- Battery capacity 0-25%

2 blue lights- Battery capacity 25-50%

3 blue lights- Battery capacity 50-75%

4 blue lights- Battery capacity 75-100%

CAUTION

1. Do not expose this product to high temperature, such as sunshine, fire, etc.
2. Do not put it in water or other liquids.
3. Do not drop this product.
4. Do not use extension cable and/or overload printed circuit board.

WARRANTY / CUSTOMER SERVICE

Sharper Image branded items purchased from SharperImage.com include a 1-year limited replacement warranty. If you have any questions not covered in this guide, please call our Customer Service department at 1 (877) 210-3449. Customer Service agents are available Monday through Friday, 9:00 a.m. to 6:00 p.m. ET.

SHARPER IMAGE®

The SHARPER IMAGE® name and logo are registered trademarks.

©Sharper Image. All Rights Reserved.

[Sharper-Image-Laptop-Tablet-Tray-with-Charger-Manual-Optimized](#)

[Sharper-Image-Laptop-Tablet-Tray-with-Charger-Manual-Original](#)