



Sharper Image Handheld Cordless Spot Vacuum 207363

[Home](#) » [Sharper Image](#) » Sharper Image Handheld Cordless Spot Vacuum 207363 

USER Manual



**Handheld Cordless Spot Vacuum
Sharper Image 207363**

Thank you for purchasing the Sharper Image Handheld Cordless Spot Vacuum. Please take a moment to read this guide and store it for future reference.

Contents

1 FEATURES

2 IDENTIFICATION OF PARTS

3 Accessories:

4 HOW TO USE

5 WARNINGS

6 SPECIFICATIONS

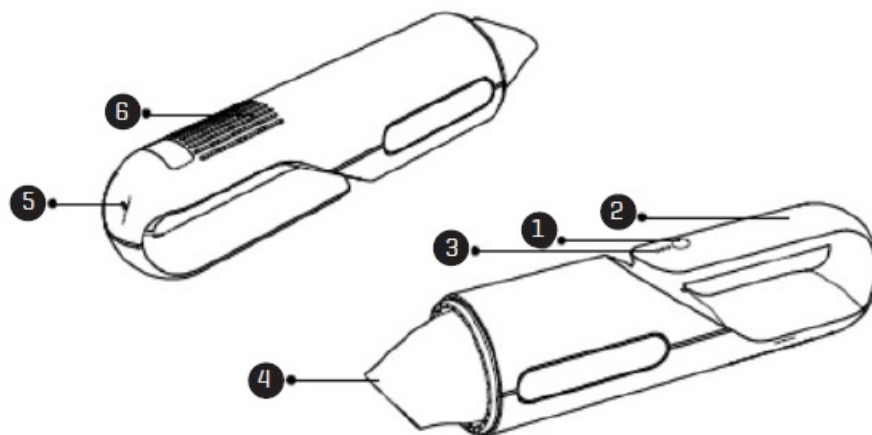
7 WARRANTY/CUSTOMER SERVICE

8 Related Posts

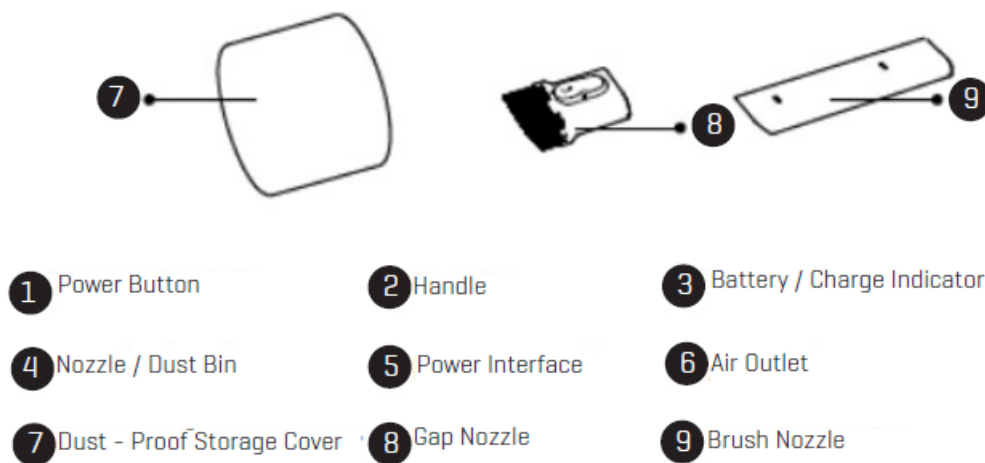
FEATURES

- Portable cordless design
- Features a non-slip handle
- Great for use in vehicles
- Operates on a rechargeable battery
- Includes brush nozzle, gap nozzle, dust-proof cap and USB cable

IDENTIFICATION OF PARTS



Accessories:



HOW TO USE

- Remove the vacuum cover
- Press the button to turn the vacuum on or off
- Attach brush or suction nozzles as needed
- To empty contents inside, untwist the nozzle/dustbin (#4 pictured above) and dump waste into the trash
- Twist the nozzle back onto the vacuum and resume use

NOTE: Charge vacuum using only the included USB charger. Using other USB chargers may cause damage to the device.

WARNINGS

- Do not use this device close to fire sources
- This device is an electronic and should not come in direct contact with water to avoid damage
- Do not place heavy objects on the device
- Do not use this device in areas with high temperatures and humidity, it will reduce the life span

SPECIFICATIONS

- **Dimensions:** 2.9" W x 11.9" L
- **Material:** plastic (fireproof ABC)
- **Battery capacity:** built-in 2600mAh 7.2V
- **Maximum power:** 90W
- **Charging time:** 3.5 hours
- Dust bin capacity holds up to 4.7 oz. of debris
- **Suction strength:** 0.58 psi (4000PA)

WARRANTY/CUSTOMER SERVICE

Sharper Image branded items purchased from SharperImage.com include a 1-year limited replacement warranty. If you have any questions not covered in this guide, please call our Customer Service department at 1 (877) 210-3449. Customer Service agents are available Monday through Friday, 9:00 a.m. to 6:00 p.m. ET.

[Sharper-Image-Handheld-Cordless-Spot-Vacuum-207363-Manual-Optimized PDF](#)

[Sharper-Image-Handheld-Cordless-Spot-Vacuum-207363-Manual-Original PDF](#)