



# Sharper Image Digital Laser Tape Measure User Manual

[Home](#) » [Sharper Image](#) » Sharper Image Digital Laser Tape Measure User Manual

## **S H A R P E R   I M A G E<sup>®</sup>** **2-IN-1 DIGITAL LASER TAPE MEASURE**

Item No. 206987

Thank you for purchasing the Sharper Image 2-in-1 Digital Laser Tape Measure. Please take a moment to read this guide and store it for future reference.

### **AUTO SHUT-OFF**

The 2-in-1 Digital Laser Tape Measure will shut off after 5 minutes of non-use. To turn the device back on, simply pull out the tape blade a few times to activate.

### **BACKLIGHT ON LCD**

The backlight on the LCD screen will activate for 30 seconds when the tape is pulled out or when a button is pressed.

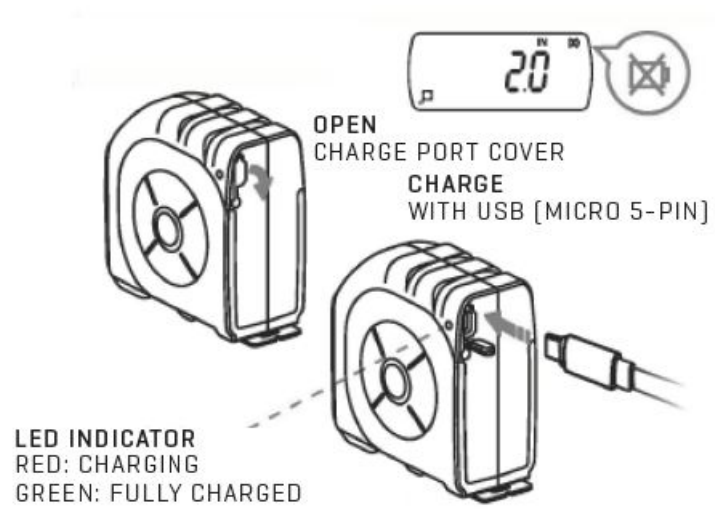
### **DIGITAL FUNCTION**

All digital functions are applied to laser mode as well as tape measure mode.

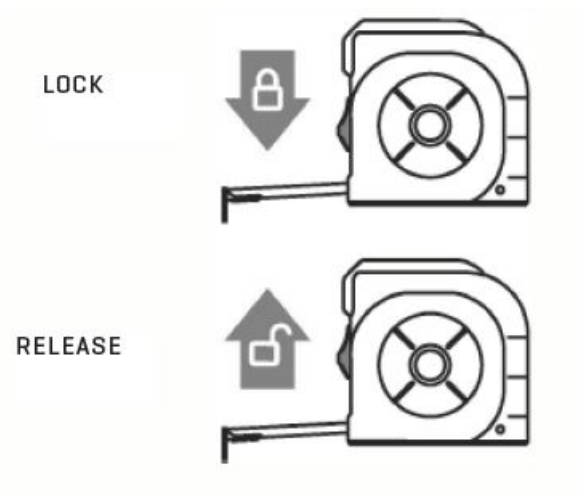
### **CHANGE TO TAPE MEASURE MODE FROM LASER MODE**

Simply pull the tape out and select tape mode.

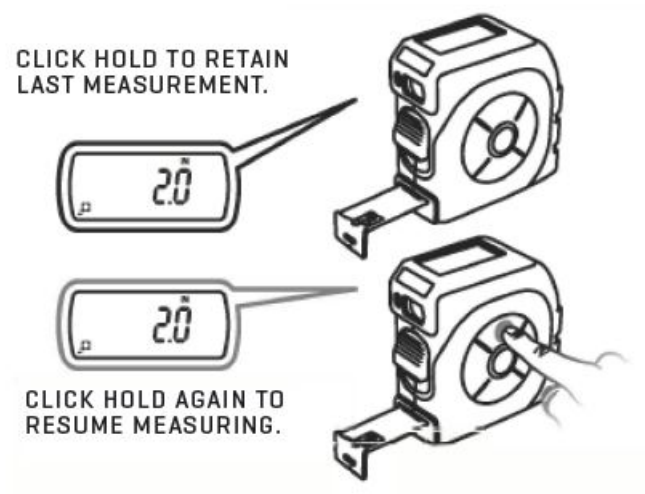
### **BATTERY CHARGING**



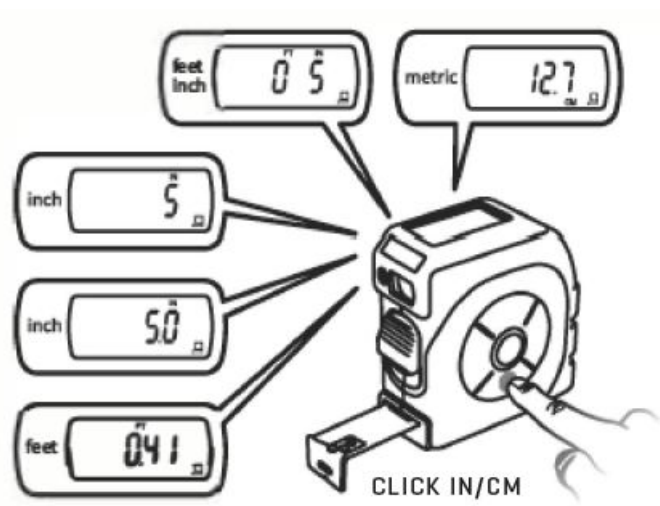
## BLADE LOCK



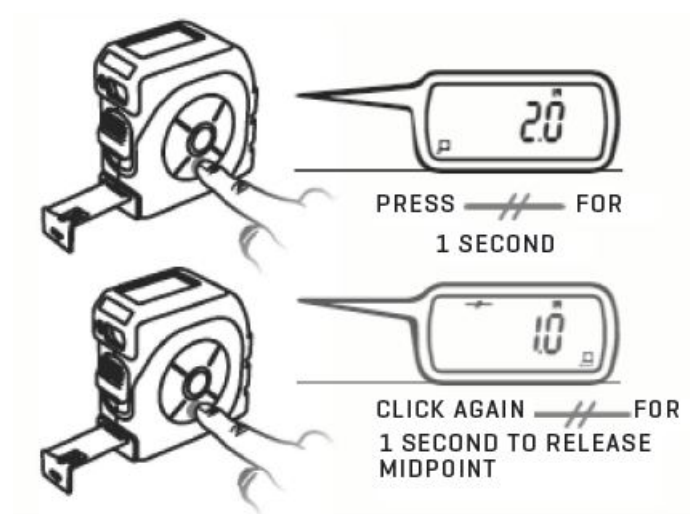
## HOLD FUNCTION



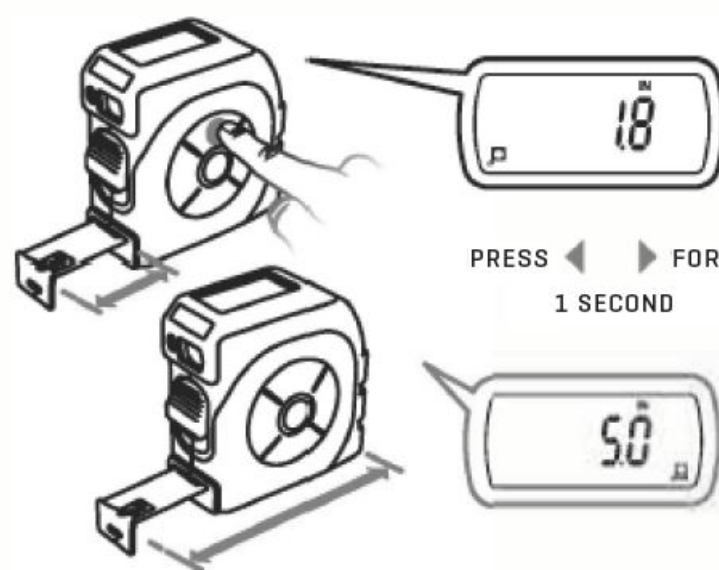
## SELECT / CONVERT UNITS



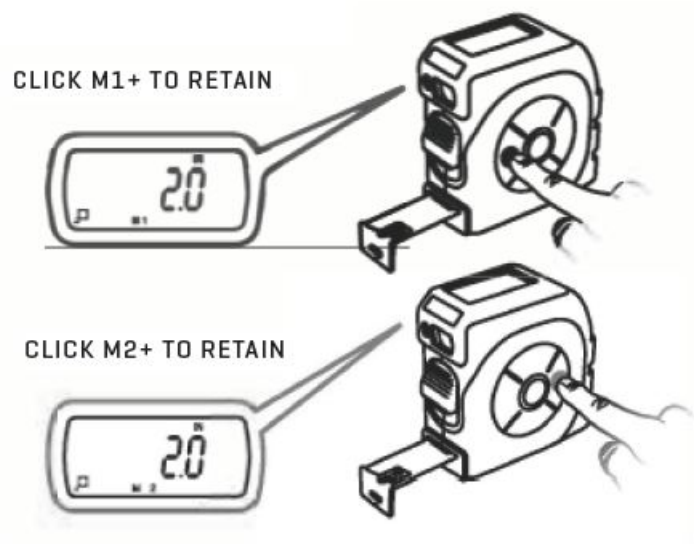
## MIDPOINT



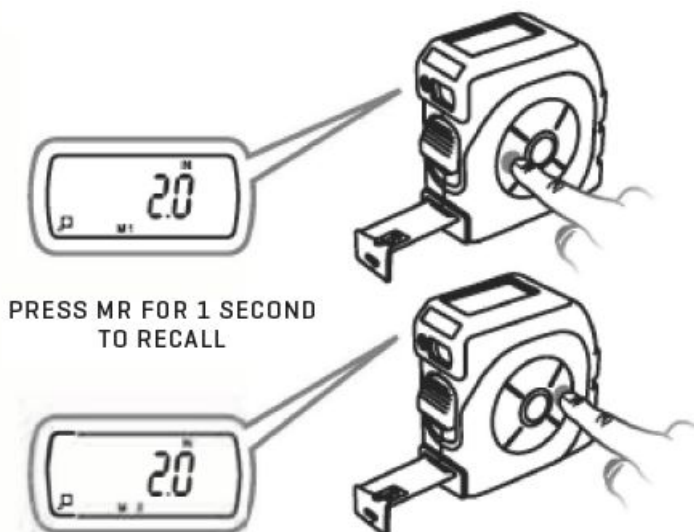
## SELECT INSIDE / OUTSIDE MEASUREMENT



## DUAL MEMORY (RECORD)

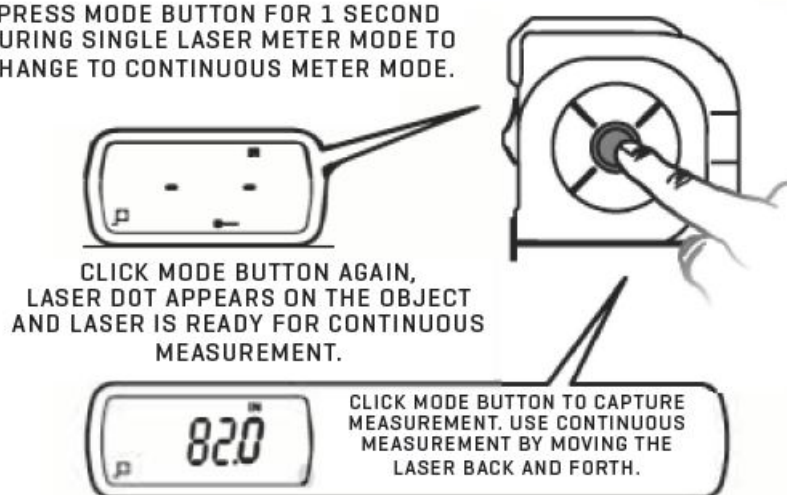


## DUAL MEMORY (RECALL)



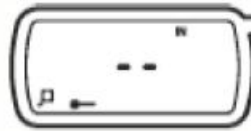
## LASER DISTANCE METER MODE (SINGLE MEASUREMENT)

PRESS MODE BUTTON FOR 1 SECOND DURING SINGLE LASER METER MODE TO CHANGE TO CONTINUOUS METER MODE.



## LASER DISTANCE MEASUREMENT (CONTINUED)

CLICK MODE BUTTON TO CHANGE TO  
LASER DISTANCE METER MODE.



CLICK MODE BUTTON AGAIN,  
LASER DOT APPEARS ON THE OBJECT  
AND LASER IS READY FOR SINGLE  
MEASUREMENT.



CLICK MODE BUTTON TO  
CAPTURE MEASUREMENT

### FCC WARNING

This equipment has been tested and found to comply with the limits for a Class B digital device, pursuant to Part 15 of the FCC Rules.

These limits are designed to provide reasonable protection against harmful interference in a residential installation.

### FCC Compliance Statement

This device complies with Part 15 of the FCC Rules.

Operation is subject to the following two conditions :

- (1) this device may not cause harmful interference, and
- (2) this device must accept any interference received, including interference that may cause undesired operation.



### WARRANTY / CUSTOMER SERVICE

Sharper Image branded items purchased from SharperImage.com include a 1-year limited replacement warranty. If you have any questions not covered in this guide, please call our Customer Service department at 1 (877) 210-3449. Customer Service agents are available Monday through Friday, 9:00 a.m. to 6:00 p.m. ET.

## SHARPER IMAGE®

The SHARPER IMAGE® name and logo are registered trademarks.

©Sharper Image. All Rights Reserved.

[Sharper-Image-Digital-Laser-Tape-Measure-Manual-Optimized](#)

[Sharper-Image-Digital-Laser-Tape-Measure-Manual-Original](#)