



## SHARPER IMAGE 208702 2.4GHz 5-Channel R-C Walking Simulation Velociraptor User Manual

[Home](#) » [Sharper Image](#) » SHARPER IMAGE 208702 2.4GHz 5-Channel R-C Walking Simulation Velociraptor User Manual 

SHARPER IMAGE 208702 2.4GHz 5-Channel R-C Walking Simulation Velociraptor User Manual



**WARNING:**

CHOKING HAZARD -Small parts Not for children under 3 years

Please keep these instructions as they contain important information.

## Contents

- [1 SAFETY PRECAUTIONS](#)
- [2 VELOCIRAPTOR](#)
- [3 TRANSMITTER](#)
- [4 NOTES FOR CHARGING](#)
- [5 Documents / Resources](#)
- [6 Related Posts](#)

## SAFETY PRECAUTIONS

- – Parente: please read the instructions with your children before using the product for the first time. Stop the velociraptor with the remote control before picking it up. – Keep hands, hair and clothing away from moving parts when the toy is operating.
- Do not use the velociraptor with the radio control in the street. Avoid collisions with people, animals and furniture.
- Warning: any change or modification made to this product that is not expressly approved in the relevant section of the declaration of conformity may terminate the usage authorization granted to the user.
- The wires are not to be inserted into socket-outlets.

## BATTERY WARNING:

- This transmitter cannot use 2 AA batteries higher than 1.5V
- Only professional personnel can disassemble and replace the lithium battery of the velociraptor.
- Do not recharge non-rechargeable batteries.
- Rechargeable batteries must be removed before recharging.
- Rechargeable batteries must be recharged under the supervision of an adult
- Do not mix different types of batteries or new batteries with old batteries.
- Only use batteries of the recommended type or an equivalent type.
- Take care to respect the + and – polarities when inserting batteries.
- Used batteries must be removed from the product.
- Do not short-circuit the power terminals.



The symbol showing a crossed-out rubbish bin means that ordinary batteries, rechargeable batteries, Duracell batteries, battery packs etc. should not be disposed of with household waste. Batteries are dangerous for health and the environment. Help to protect the environment against health risks. Ask your child to dispose of batteries cleanly by taking them to your local collection points. In this way, batteries can be recycled safely.

## VELOCIRAPTOR

### 1. Power Switch()

- Slide the switch to "ON" position — Power on.
- Slide the switch to "OFF-position — Power Off.

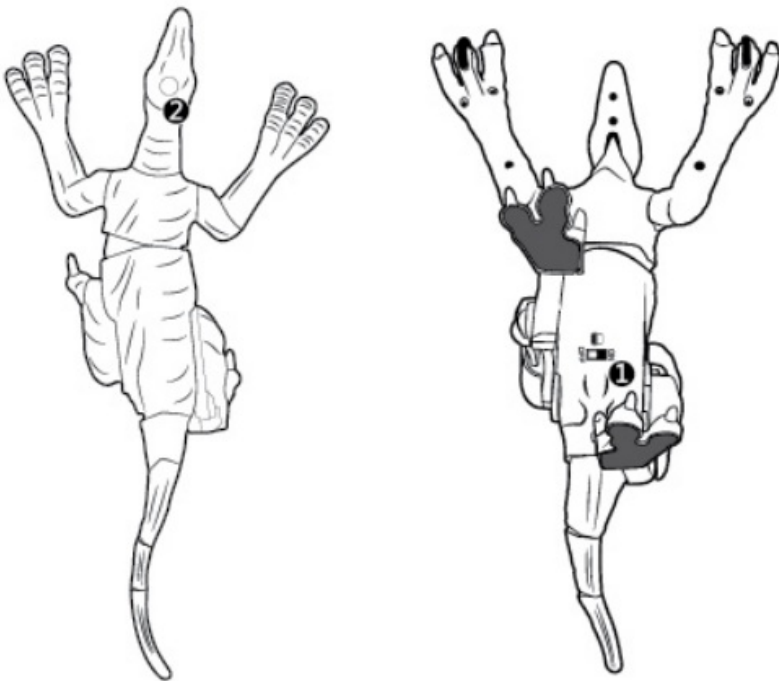
### 2. DEMO BUTTON(TRY-ME BUTTON

- Click the button, the velociraptor will show the walking, forwarding, sounding with light in its mouth automatically.
- Press the button for 3 seconds to the sleeping mode.
- When in sleeping mode, click the button to wake up the velociraptor, then turn on the transmitter again to start the game.

### 3. OTHERS

- Souding with light Forward or backward with 3 different simulated sound and walking, mouth with light.
- Low battery: If the velociraptor with low power, its action stopped after 3 seconds with-DI DI Drsound, means it needs to be charged.
- Sleeping automatically: The velociraptor enter into the sleeping mode without any operating in 5 minutes; tum off the power switch then turn it on again or press the DEMO button to restart the velociraptor.

## VELOCIRAPTOR



### CARE AND MAINTENANCE:

Always remove the batteries from the transmitter if it is not used for a long time. Wipe the toy gently with a clean cloth. Keep the toy away from direct sources of heat. Do not immerse the toy in water, as this could damage electronic components. Replace batteries when they become less powerful. Operation temperature 0-40 C .

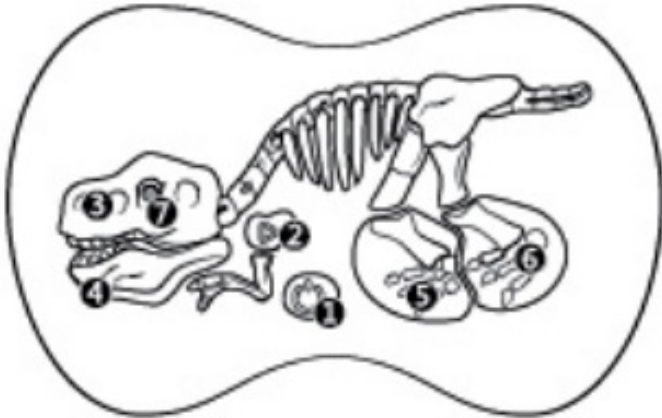


Waste electrical and electronic equipment (WEEE): When this device reaches the end of its life, please remove all batteries and dispose of them separately. Take electrical devices to a collection centre for electronic equipment and household appliances. Other components can be disposed of with household waste.

## TRANSMITTER

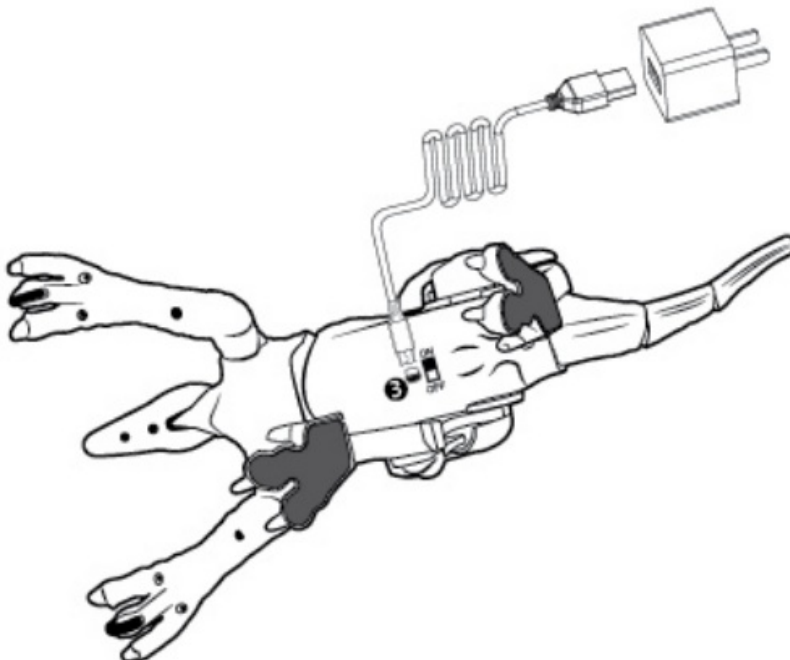
### 1. 1Power Switch®

- Click the button — Power on.
- Press the button — Power off.



### 2. DEMO BUTTON®

- Click the button, the velociraptor will show the walking(forward/backward/tum left/tum right) wagging its tail, swaying its body with different sounds automatically.
- Keep pressing the button for 3 seconds to turn off the sound mode, then keep repressing the button for 3 seconds to turn on the sound mode.



### 3. Forward button®, Backward button®, Turn left button®, Turn right button®

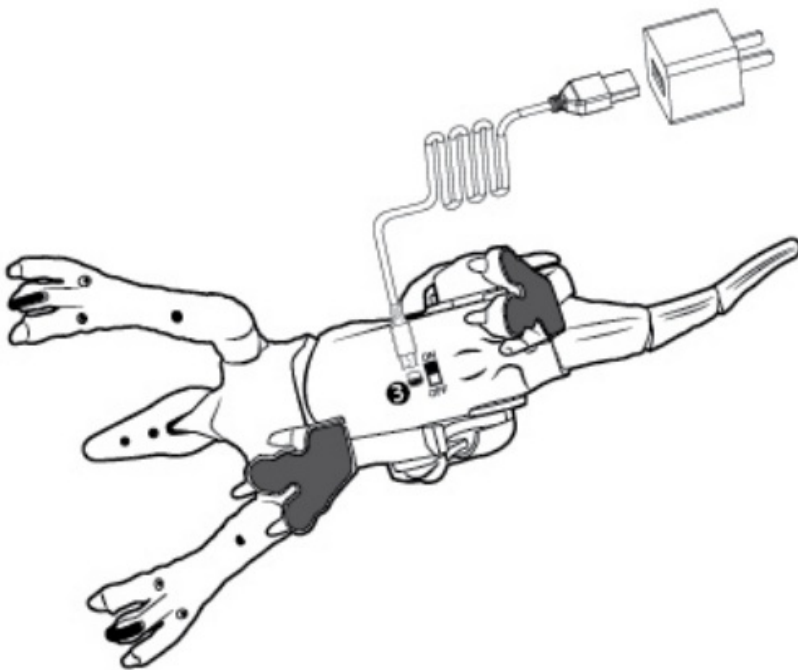
- Click 0—Walking forward.
- Click ®—Walking backward.
- Click ®—Swaying the body from the left side.
- Click ©—Swaying the body from the right side.
- Click ® and at the same time—Walking forward from left side.

- Click ® and e at the same time—Walking forward from right side.
- Click 0 and at the same time—Walking backward from left side.
- Click 0 and © at the same time—Walking backward from right side. Indicator®
- LED Indicator keep Flashing — Frequency connection or remote control signals fail .
- LED Indicator Constantly On — Frequency connected successfully or without any operating actions.

#### 4. Others

- Power saving mode: Remote control will be power off if without any operating actions. You should turn on the power button again to start.

### Velociraptor Charging



### Charging port

- Please insert the Micro USB plug of the USB cable into the USB socket from the bottom of the velociraptor.
- Then insert the other end of the USB plug into the interface of the computer or other adapters (such as mobile phone charger).
- Full charging time takes about 2 hours; Operating time about 2 hours.
- The indicator from the bottom of the velociraptor turns to solid RED when in charging.
- The indicator from the bottom of the velociraptor turns to OFF when fully charged.
- Take away the USB cables with the power on to start the game.

### NOTES FOR CHARGING

- It is strictly prohibited to put the battery in the high temperature heating place, such as the naked flame or electric heating device, otherwise, it is easy to cause damage or explosion.
- DO NOT hit or strike the hard surface with the battery. No disassembly of the battery.
- DO NOT immerse the battery in water. Keep the battery in a dry place. Please keep close watch of charging.

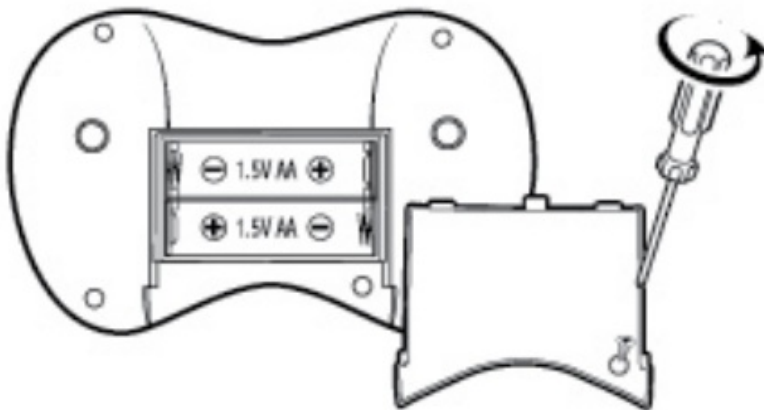
## NOTE:

- The battery of the transmitter can only be installed or replaced by the guardian.
- Please replace the battery when the product function weakens.
- Please keep the instructions properly for future reference.
- Please strictly follow the instructions for the use of the product.
- Users should reset the product for the product may have malfunction in electrostatic environment.
- It is suggested to use the new alkaline batteries for the best functional effect.

## Detailed understanding of care and innovation/environment protection/ column

- Article One Class C Equipment of Universal Micro Power (Short Distance) Wireless Device in Technical Requirements for Micro Power (Short Distance) Wireless Device.
- It is strictly prohibited to use the various model transmitter in the center of the circle of the airport track center point and the area of radius 500m in order to ensure the requirements of aeronautical radio station. It is strictly prohibited to use model transmitter in the wireless control order period and area issued by the national relevant department.
- With the intelligent onekey for startup and shutdown, the velociraptor and transmitter will automatically shutdown with no operation after 5 minutes, which can reduce the electric power loss. Press the power switch for re-start.
- It may cause the system breakdown in some cases due to the static influence or other interference. At this time, the battery can be disassembled and re-loaded. The system can be restored to normal operation after the reset of system failure.

## TRANSMITTER BATTERY INSTALLATION



1. Remove the screw of the battery cover at the bottom
2. Reoad 2X15V -AK batteries in the battery pack accordng to polarity + and –
3. Ciose the battery cover and tighten the screw of the transmitter anticlockwise and open the battery cover

## Multiple velociraptors operated at the same time

1. Tum on the velociraptor0,then turn on the transmitter @, push the joystick or press any one of keys on the transmitter, and the velociraptor Ois locked and connected to the transmitter@ successfully.
2. Tum on the velociraptoa, then turn on the transmitter, push the joystick or press any one of keys on the

transmitter, and the velodraptor ® is locked and connected to the transmitter° successfully.

3. Turn on ① @...N velociraptor and so on, then turn on the transmitters accordingly till they are locked and connected with their own velociraptor, now the velociraptors can be operated by their own transmitters independently. (If not follow the steps as mentioned above, a transmitter can operate 2 or several velociraptors at the same time.)

## PROBLEM SOLVING

THE PROBLEM	REASON	COUNTERMEASURES
Reaction of the power switch or indicator light off	<ul style="list-style-type: none"> <li>• Low battery of velociraptor or the transmitter.</li> <li>• System program stop due to the velociraptor or the transmitter interference.</li> </ul>	<ul style="list-style-type: none"> <li>• Re-charge the car or replace the battery of the transmitter.</li> <li>• Take out the battery and re-load into the system for system reset.</li> </ul>
Out of control	<ul style="list-style-type: none"> <li>• A remote velociraptor with the same frequency is operating around you and the velociraptor is locked with another transmitter.</li> <li>• Beyond the remote range.</li> </ul>	<ul style="list-style-type: none"> <li>• Move it to the place with no wireless interference.</li> <li>• Shut off the transmitter of the same type and re-start the machine.</li> </ul>
Interrupted or slow remote action	<ul style="list-style-type: none"> <li>• High-frequency interference or near high-voltage wires, transformers and some buildings.</li> <li>• Low battery of the transmitter battery.</li> </ul>	<ul style="list-style-type: none"> <li>• Avoid playing in such environment or choose other place for playing</li> <li>• Replace new battery of the transmitter.</li> <li>• Please get close to the transmitter and play.</li> </ul>
Slow velociraptor running or running failure	<ul style="list-style-type: none"> <li>• Battery exhaustion.</li> <li>• Hair, soft things or other dirt are blocked on the hub.</li> <li>• Battery aging or poor motor.</li> </ul>	<ul style="list-style-type: none"> <li>• Re-charge the battery.</li> <li>• Take out the foreign objects carefully.</li> <li>• Contact with the distributor for repair if it still cannot be restored after the failure exclusion.</li> </ul>

### POWER OF TRANSMITTER:

Power type: DC 3V 0.5W Battery required:2 X 1.5V"AA"(Not included)

Operation frequency:2.4GHz Operation temperature:0 C – 40 C

### POWER OF VELOCIRAPTOR:

Power type: DC 3.7V 7W Battery required:3.7V 1200mAh Lithium-ion polymer(Included)

Charging time:about 2 hours Charging temperature:0 C – 40°C



## VELOCIRAPTOR CHARGING CONNECTOR:

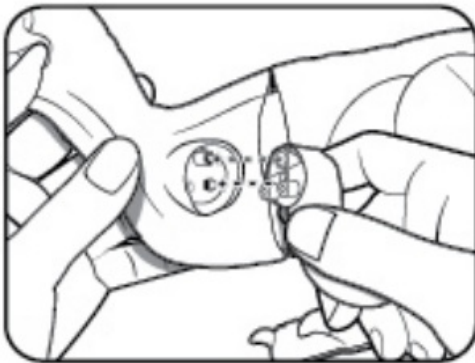
Charging connector: Micro USB Charging voltage: DC 5V

## USB CABLE:

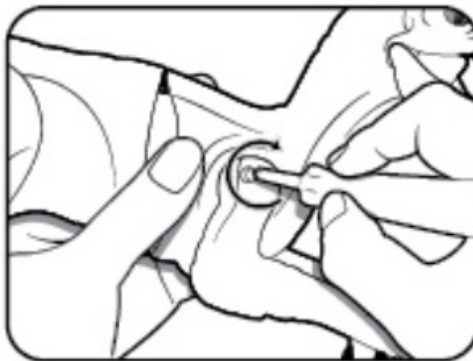
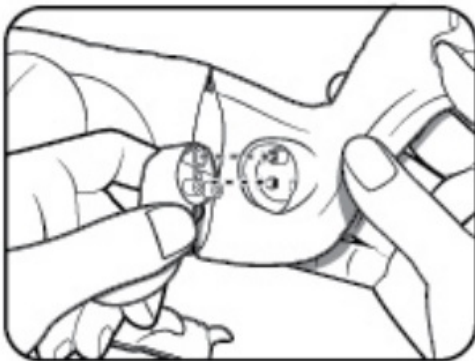
Voltage:5V 0.54 Rated power: ≈2.5V

## START GAME

1. Install the batteries in the transmitter, make sure the velociraptor with full charging.
2. Turn on the power switch of the velociraptor, then turn on the power switch of the transmitter, now the velociraptor is connecting with the transmitter successfully.
3. Pressing the "Forward" or "Backward" button on the transmitter, the velociraptor is walking forward or backward.
4. Pressing the "Forward" and "Turn Left" button on the transmitter at the same time, the velociraptor is walking forward from the left side. Other operations and functions, please refer to the "TRANSMITTER PART 3".
5. Press the "DEMO" button, the velociraptor will show different walking performance automatically (Refer to the "TRANSMITTER PART 2"). It is suitable for the little child to watch the games.

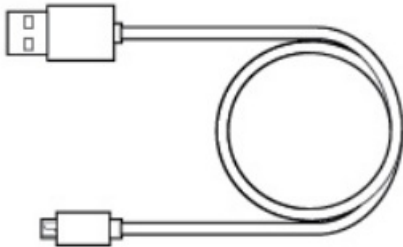


Install the left hand into the hole and tighten it clockwise with the screwdriver.




Install the right hand into the hole and tighten it clockwise with the screwdriver.





USB cable X1  
only for charging

## Documents / Resources

	<p><a href="#">SHARPER IMAGE 208702 2.4GHz 5-Channel R-C Walking Simulation Velociraptor</a> [pdf] User Manual</p> <p>208702 2.4GHz 5-Channel R-C Walking Simulation Velociraptor, 208702, 2.4GHz 5-Channel R-C Walking Simulation Velociraptor, 5-Channel R-C Walking Simulation Velociraptor, R-C Walking Simulation Velociraptor, Walking Simulation Velociraptor, Simulation Velociraptor, Velociraptor</p>
---	---