



## SHARPER IMAGE 207811 Wireless Cassette Player User Guide

[Home](#) » [Sharper Image](#) » SHARPER IMAGE 207811 Wireless Cassette Player User Guide 

### SHARPER IMAGE 207811 Wireless Cassette Player



Thank you for purchasing the Sharper Image Wireless Cassette Player. Please take a moment to read this guide and store it for future reference.

## Contents

### [1 INTRODUCTION](#)

### [2 FEATURES](#)

### [3 IDENTIFICATION OF PARTS](#)

### [4 POWER SUPPLY](#)

### [5 OPERATING THE WIRELESS CASSETTE PLAYER \(WIRELESS CONNECTION\)](#)

### [6 OPERATING THE WIRELESS CASSETTE PLAYER \(WIRED CONNECTION\)](#)

### [7 SPECIFICATIONS](#)

### [8 WARRANTY / CUSTOMER SERVICE](#)

### [9 Documents / Resources](#)

#### [9.1 References](#)

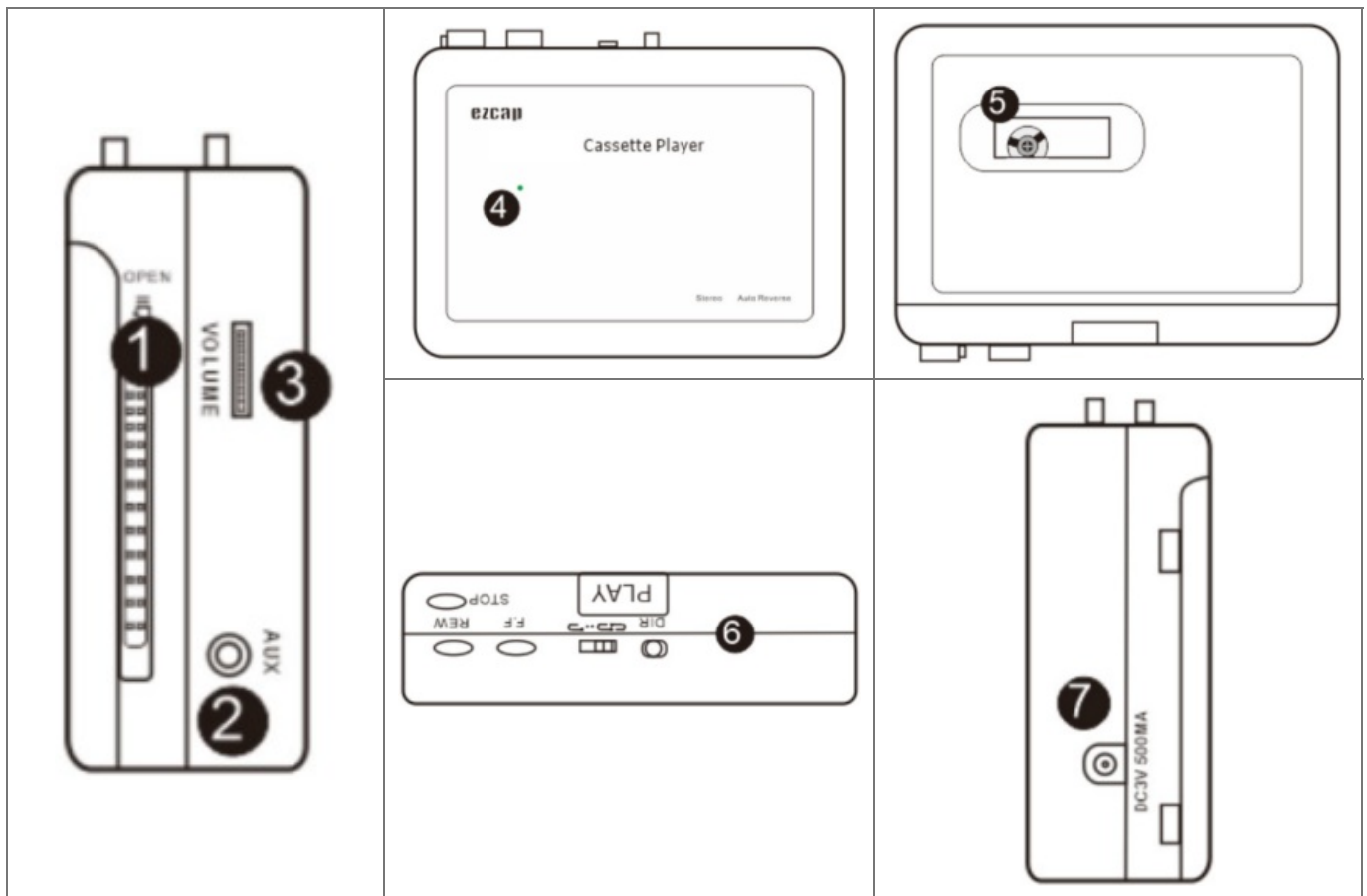
### [10 Related Posts](#)

## INTRODUCTION

The Sharper Image Wireless Cassette Player lets you enjoy your favorite cassettes once again, by streaming the music from the player to your own wireless speakers, earbuds or headphones. If you do not have a wireless receiver, you can connect wired speakers, earbuds or headphones via the 3.5mm auxiliary line-in jack.

## FEATURES

- Compact cassette player
- Stereo L-R audio
- Wireless and wired connections
- Automatic wireless search and pairing
- Wireless range 30 ft. (10m)
- USB or battery power (2 AA batteries required)
- Rotary volume knob · Auto reverse
- Auxiliary line out/headphone jack



## IDENTIFICATION OF PARTS

1. Lid Locking Switch: Slide down to open the lid and insert cassette.
2. AUX Port: 3.5mm auxiliary line jack allows you to connect wired speakers or headphones.
3. Volume Control: Rotary knob to adjust music volume.
4. Wireless LED Indicator:
  - Quick flash (1 time per second): Searching for wireless device.
  - Slow flash (1 time per two seconds): Successfully paired with wireless device.
5. Transparent Window: Lets you see the cassette as it is playing.
6. Cassette Player Buttons:
  - PLAY** Press to play cassette
  - STOP** Press to stop playing the cassette
  - FF** Press to fast forward cassette
  - REW** Press to rewind cassette
  - DIR** Press to change the direction of the cassette playing
  - Auto Reverse switch.** Slide to activate Auto Reverse. When one side ends, the other side will begin playing automatically.
7. DC Port: 5V DC power supply jack.

## POWER SUPPLY

The Wireless Cassette Player can be powered by the USB cable in the package OR 2 AA batteries (not included). To insert batteries, open the lid of the deck, and insert 2 AA batteries in the compartment.

## OPERATING THE WIRELESS CASSETTE PLAYER (WIRELESS CONNECTION)

1. Insert a cassette into the device.
2. Power on your wireless speakers/earbuds/headphones.
3. Press the "PLAY" button on the top of the device.
4. The Wireless Cassette Player will search for your wireless device. The wireless indicator light will flash quickly (about once per second) while it searches.
5. The wireless indicator light will flash slowly (about once every 2 seconds) when it has paired successfully. You should hear the sound from your wireless receiver.

**NOTE:** Wireless search will turn off automatically in 3 minutes if there is no pairing. Turn off both devices and try pairing again.

## OPERATING THE WIRELESS CASSETTE PLAYER (WIRED CONNECTION)

To connect wired speakers, earbuds or headphones, plug them into the 3.5mm "AUX" jack on the device.

## SPECIFICATIONS

**Wireless Version:** 4.2

**Wireless Range:** 30 ft. (10m)

**Supporting Agreement:** A2DP, AVRCP, AVCTP, AVDTP, HFP, SPP, SMP, ATT, GAP, GATT, RFCOMM, SDP, I2CAP

**Signal-to-Noise Ratio:** >90dB

**Frequency Range:** 2.402GHz – 2.480GHz

**Audio Channels:** Stereo L/R

**Audio Output:** 3.5mm earphone jack, wireless transmitter

**Power Supply:** 2\*AA Battery or USB (5V DC)

**Bit Rate:** 128 Kbps

**Dimensions:** 4.4" L x 3.3" W x 1.3" H


**Weight:** 0.4 lbs.

## WARRANTY / CUSTOMER SERVICE

Sharper Image branded items purchased from SharperImage.com include a 1-year limited replacement warranty. If you have any questions not covered in this guide, please call our Customer Service department at 1 (877) 210-3449. Customer Service agents are available Monday through Friday, 9:00 a.m. to 6:00 p.m. ET.

# SHARPER IMAGE®

## Documents / Resources

	<p><a href="#">SHARPER IMAGE 207811 Wireless Cassette Player</a> [pdf] User Guide 207811, Wireless Cassette Player</p>
---	--

## References

-  [The Sharper Image - Official Site @ SharperImage.com](http://SharperImage.com)

Manuals+.