



SHARP XL-B512 Hi-Fi Micro System User Manual

[Home](#) » [Sharp](#) » SHARP XL-B512 Hi-Fi Micro System User Manual 

Contents

- 1 SHARP XL-B512 Hi-Fi Micro System
- 2 Important safety instructions
- 3 Warning
- 4 Maintenance
- 5 Batteries
- 6 What is included in the box
- 7 Panels & Controls
- 8 Remote control
- 9 Preparation for use
- 10 BASIC FUNCTIONS
- 11 FM radio operation
- 12 CD operations
- 13 Bluetooth Operation
- 14 Troubleshooting
 - 14.1 No Power
- 15 Technical specification
- 16 Documents / Resources
 - 16.1 References
- 17 Related Posts

SHARP

SHARP XL-B512 Hi-Fi Micro System



Important safety instructions

Please, read these safety instructions and respect the following warnings before the appliance is operated:

- The lightning flash with the arrowhead symbol, within an equilateral triangle, is intended to alert the user to the presence of uninsulated “dangerous voltage” within the product’s enclosure that may be of sufficient magnitude as to constitute a risk of electric shock to the person.
- The exclamation point within an equilateral triangle is intended to alert the user to the presence of important operating and maintenance (servicing) instructions in the literature accompanying the appliance.
- This symbol means that the product should be disposed of in an environmentally friendly manner and not with general household waste.
- AC voltage
- DC voltage
- Class II equipment

Warning

- Always follow basic safety precautions when using this appliance, especially when children are present.
- Children should be supervised to ensure that they do not play with the appliance.
- Do not damage the power cord, or place any heavy objects on it, do not stretch it or bend it. Also do not use extension cables. Damage to the power cord may result in fire or electric shock.
- If the supply cord is damaged, it must be replaced by the manufacturer, a service agent, or a similarly qualified person.
- Ensure that the unit is plugged into an AC 220-240V 50Hz power outlet. Using higher voltage may cause the unit to malfunction or even catch fire.
- If the power plug does not fit into your outlet, do not force the plug into the electrical socket.
- To switch off the unit place it on standby and unplug it from the mains power supply.

- Do not disconnect or connect the power cord with wet hands. It may cause an electric shock.
- Disconnect the power cord if it is not used for a long time.
- Ensure that the mains plug is always easily accessible.
- This product does not contain any parts that are serviceable by the user. In case of a fault, contact the manufacturer or authorized service department. Exposing the internal parts inside the device may endanger your life. The manufacturer's guarantee does not extend to faults caused by repairs carried out by unauthorized third parties.
- Do not use this product immediately after unpacking. Wait until it warms up to room temperature before using it.
- Ensure this product is used in moderate climates only (not in tropical/ subtropical climates).
- Place product on a flat, stable surface that is not subject to vibrations.
- Ensure the product and its parts do not overhang the edge of the supporting furniture.
- To reduce the risk of fire, electric shock, or damage to this product, do not expose it to direct sunlight, dust, rain, and moisture. Never expose it to dripping or splashing and do not place objects filled with liquids on or near the product.
- Do not install near any heat sources such as radiators, heat registers, stoves, or other apparatus (including amplifiers) that produce heat.
- Do not place the product where the humidity is high and ventilation is poor.
- Ensure a minimum distance of 5 cm around the apparatus for sufficient ventilation. Do not block any ventilation openings of this and ensure they are not covered with items such as newspapers, table-cloths, curtains, etc.
- NEVER let anyone, especially children, push anything into holes, slots, or any other openings in the unit's casing as this could result in a fatal electric shock.
- Storms are dangerous for all-electric appliances. If the mains or aerial wiring is struck by lightning, the appliance might get damaged, even if it is turned off. You should disconnect all the cables and connectors of the appliance before a storm.
- Do not move the unit during disc playback. During playback, the disc rotates at high speed. Do not lift or move the unit during playback, as doing so may damage the disc or the unit.
- Do not turn up the volume while listening to a section with very low-level inputs or no audio signals. If you do, the speaker may be damaged when a peak level section is suddenly played.

Maintenance

- Unplug the power cable from the power source before cleaning the appliance.
- Use a soft and clean rag to clean the outside of the unit. Never clean it with chemicals or detergent.

Batteries

- Observe the correct polarity when inserting the batteries.
- Do not expose batteries to high temperatures and do not place them in locations where the temperature might increase quickly, e.g. near there or in the direct sunshine.
- Do not expose batteries to excessive radiant heat, do not throw them into there, do not disassemble them, and do not try to recharge un-rechargeable batteries. They could leak or explode.
- Never use different batteries together or mix new and old ones.
- When the Remote Control is not to be used for a long time (more than a month), remove the battery from the Remote Control to prevent it from leaking.

- If the batteries leak, wipe away the leakage inside the battery compartment and replace the batteries with new ones.
- Do not use any batteries other than those special ones.

Do not ingest battery, chemical burn hazard

- If the battery is swallowed, it can cause severe internal burns in just 2 hours and lead to death. Keep new and used batteries away from children. If the battery compartment does not close securely, stop using the product and keep it away from children. If you think batteries might have been swallowed or placed inside any part of the body, seek immediate medical attention.

Disposal of this equipment and Batteries

- Do not dispose of this product or its batteries as unsorted municipal waste. Return it to a designated collection point for the recycling of WEEE in accordance with local law. By doing so, you will help to conserve resources and protect the environment.
- Most EU countries regulate the disposal of batteries by law. Contact your retailer or local authorities for more information.
- The symbol shown to the right appears on electrical equipment and batteries (or their packaging) to remind users of the disposal requirements. If “Hg” or ‘Pb’ appears below the symbol, this means that the battery contains traces of mercury (Hg) or lead (Pb), respectively.
- Users are requested to use the locally provided return facilities for used equipment and batteries.

CAUTION

- Appliances with built-in CD players are marked with this caution label
- THIS UNIT IS A CLASS 1 LASER PRODUCT. THIS UNIT USES A VISIBLE LASER BEAM WHICH COULD CAUSE HAZARDOUS RADIATION EXPOSURE IF DIRECTED. BE SURE TO OPERATE THE PLAYER CORRECTLY AS INSTRUCTED. WHEN THIS UNIT IS PLUGGED INTO FOR THE WALL OUTLET, DO NOT PLACE YOUR EYES CLOSE TO THE OPENINGS TO LOOK INTO THE INSIDE OF THIS UNIT. • USE OF CONTROLS OR ADJUSTMENTS OR PERFORMANCE OF PROCEDURES OTHER THAN THOSE SPECIFIED HEREIN MAY RESULT IN HAZARDOUS RADIATION EXPOSURE. • DO NOT OPEN COVERS AND DO NOT REPAIR YOURSELF. REFER SERVICING TO QUALIFIED PERSONNEL.

CE and UKCA statement

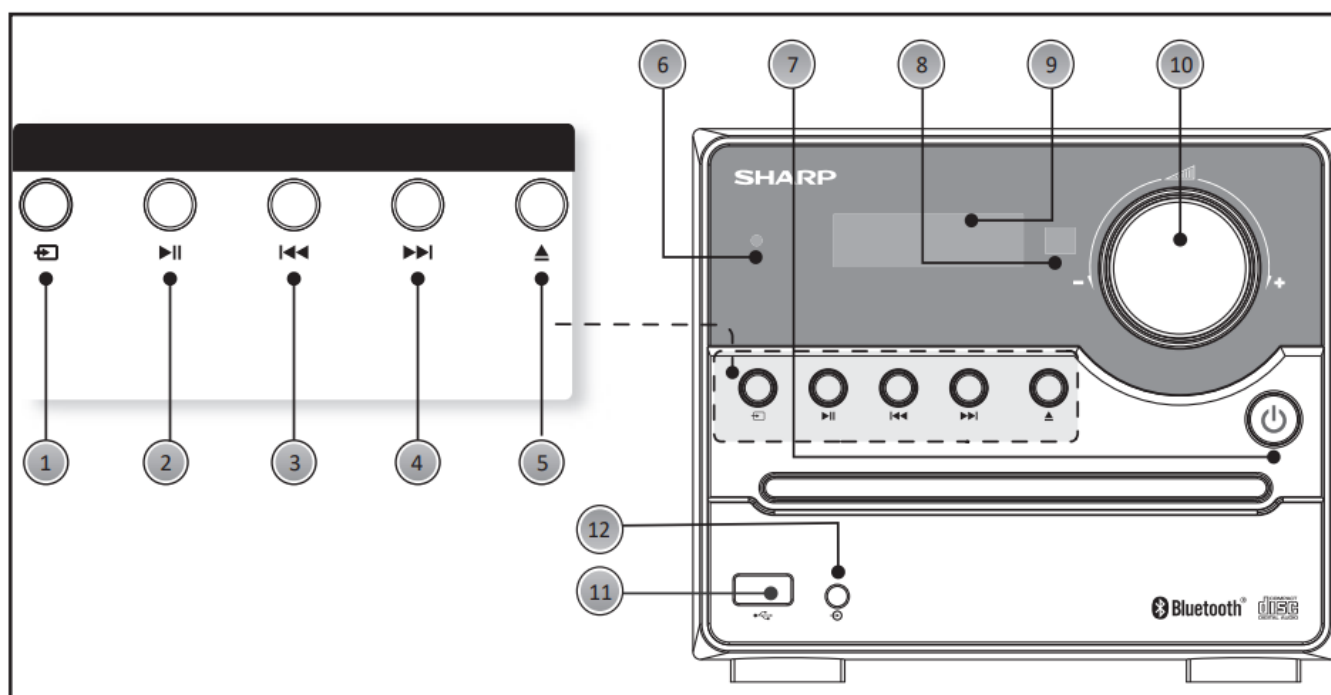
- Hereby, Sharp Consumer Electronics Poland sp. z o.o. declares that this audio device is in compliance with the essential requirements and other relevant provisions of RED Directive 2014/53/EU and UK Radio Equipment Regulations 2017.
- The full text of the EU declaration of conformity is available by following the link www.sharpconsumer.com and then entering the download section of your model and choosing “CE Statements”.

Trademarks

What is included in the box

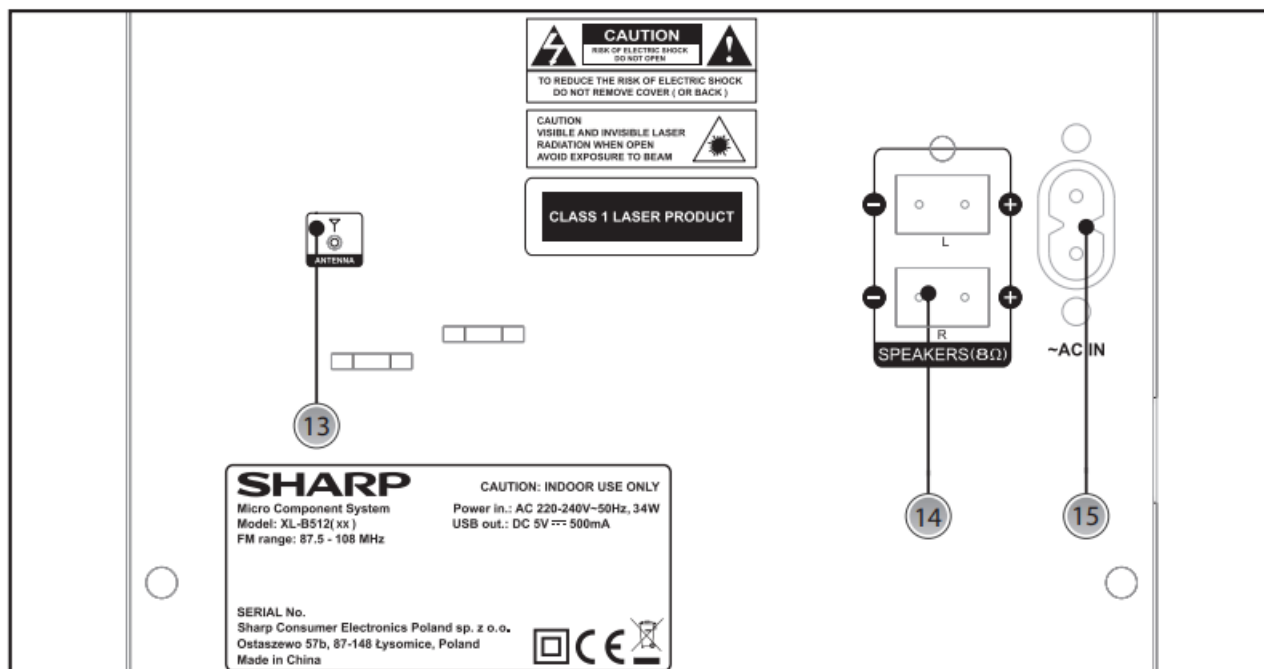
- 1 x Main unit
- 2 x Speaker
- 1 x Remote control
- 2 x AAA battery
- 1 x User guide
- 1 x Power cord

Panels & Controls



Front panel

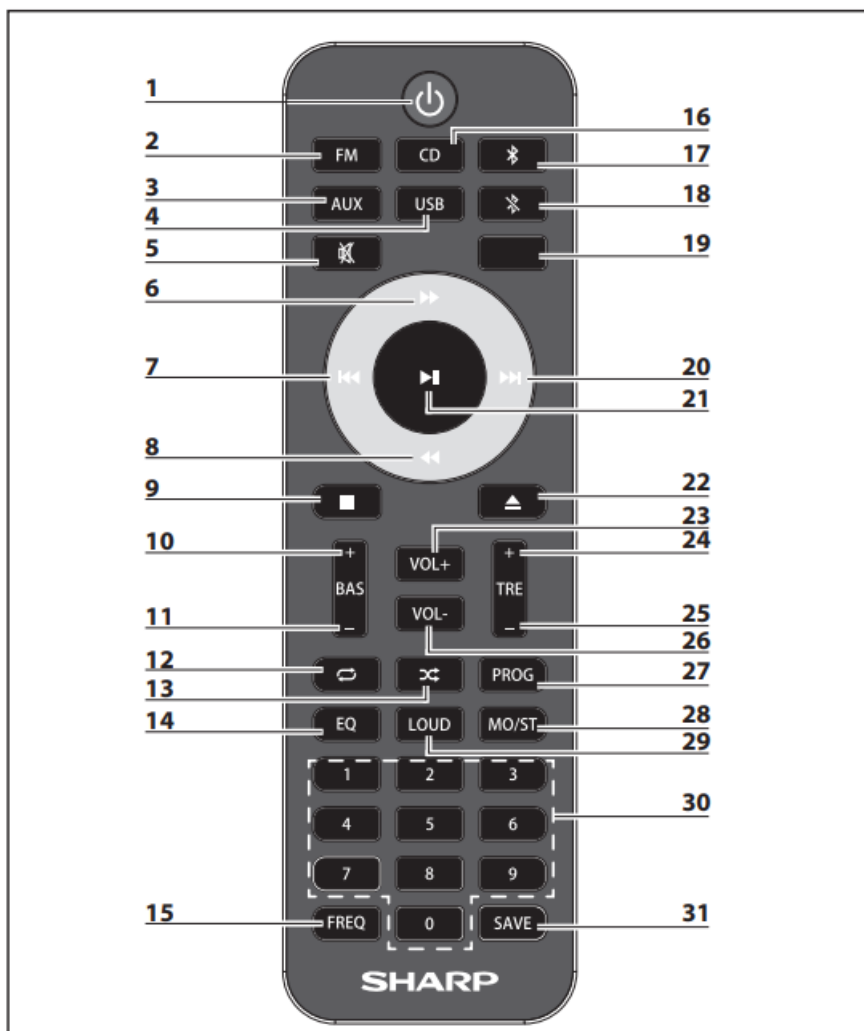
- SOURCE button: Press to select the modes.
- PLAY/PAUSE button: Press to pause or play the music.
- PREVIOUS button: Press to skip to the previous song/ station, press and hold to reverse/scan.
- NEXT button: Press to skip to the next song/station, press and hold to fast forward/scan.
- EJECT button: Press to open/close the CD drawer (in CD mode)
- Standby indicator: lit when in standby
- STANDBY: press to turn on or enter standby
- Remote Sensor: Point the remote at the sensor within a 7m range.
- Display Screen: Shows information in relation to the mode/function being used.
- VOLUME+/- knob: Turn to adjust the volume level.
- USB Port: Used to connect a USB ash disk.
- Audio Input Socket: Used to connect external audio sources.



Rear panel

- FM Antenna: To receive the FM signal.
- Speaker Terminals: Connect the speakers to the main unit.
- Power supply: Connect figure 8 power lead.

Remote control



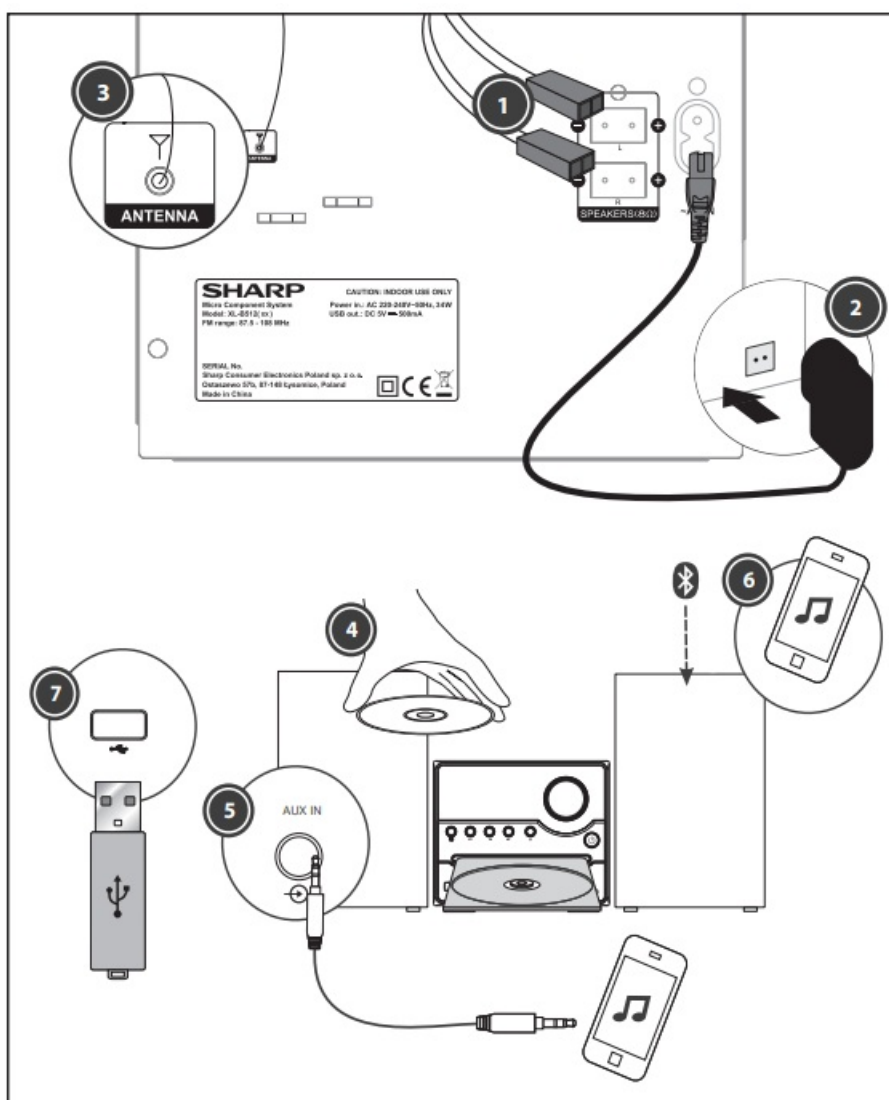
- **STANDBY:** press to turn on or enter standby.
- **FM:** Press this to enter FM mode.
- **AUX:** Press this to enter Aux mode.
- **USB:** Press this to enter USB mode.
- **MUTE:** Press this to mute the sound, press again, or press the + or – button to resume.
- **FAST FORWARD:** Press this too fast forward the track that is currently playing.
- **PREVIOUS:** Press this to skip to the previous track/saved station.
- **FAST REWIND:** Press this to fast-rewind the track that is currently playing.
- **STOP:** In CD/USB mode, press to stop playback.
- **BASS +:** Press this button to increase the bass.
- **BASS -:** Press this button to decrease the bass.
- **REPEAT:** Press to repeat the song in CD mode.
- **RANDOM:** Press this to play music in random order.
- **EQ:** Press this to select the sound equalizer pre-set.
- **FREQ:** Frequency: in FM mode, press to enter a frequency manually.
- **CD:** Press this to enter CD mode.
- **BLUETOOTH:** Press this to enter Bluetooth mode.
- **BLUETOOTH disconnect:** Press to disconnect a paired Bluetooth device.
- **BLANK:** no function
- **NEXT:** Jump to the next track/saved station.

- **PLAY/PAUSE:** Start or pause the playback
- **EJECT:** Press to open/close the CD drawer (in CD mode).
- **VOLUME +:** Press this to increase volume.
- **TREBLE +:** Press this button to increase the treble.
- **TREBLE -:** Press this button to decrease the treble.
- **VOLUME -:** Press this to decrease volume.
- **PROGRAM:** Used this to program the playback order.
- **MO/ST:** In FM mode, press to switch stereo on/o.
- **LOUD:** Press “delete” to increase the level of bass at low volume levels.
- **NUMBER (0-9):** Use to select tracks or enter a frequency.
- **SAVE:** Press to save your favorite stations.

Fitting or replacing the remote control batteries

- To open the battery compartment, push your thumb down onto the circle on the battery compartment cover and slide it down.
- Fit two batteries observing polarity +/- as shown. When replacing the batteries, use only the same type of battery supplied.
- Get the battery cover and clip it in place.

Preparation for use



1. Place a speaker on either side of the main unit, preferably at the same height and with at least 150mm space between each speaker to the main unit.
2. Connect the speaker plugs to the rear of the unit. Take care to match the speaker placed to the LEFT output on the rear of the unit. Repeat for the RIGHT speaker.
3. Please ensure that the voltage marked on the rating label, located on the rear panel, is the same as the voltage in your area. Insert the 8 ends of the power lead into the AC IN socket on the back of the unit. Plug the other end of the cable into the wall socket.
4. Press the STANDBY button on the main unit to turn it ON. Extend the ANTENNA to get the best reception. Press the source button on the unit, or the FM button on the remote control to enter the FM mode. To use the radio in FM mode, follow the instructions in the FM RADIO OPERATION chapter of the User manual.
5. Press the source button on the unit, or the CD button on the remote control button to enter the CD mode. Press the button to open the disc drawer and insert a disc. Press the button again to close. The CD will begin playing from the first track.
6. Press the source button on the unit, or the AUX button on the remote control button to enter the Aux In (Audio) mode. Connect your audio device to the AUX IN socket via a 3.5mm aux in the cable. Control playback via your connected audio device.
7. Press the source button on the unit, or button on the remote control button to enter the Bluetooth mode. Activate the Bluetooth-enabled device and select the "SHARP XLB512". Select the song you want and press to play.

8. Press the source button on the unit, or the USB button on the remote control to enter the USB mode. Plug the USB device into the USB port on the front panel of the unit and it will read the USB and play automatically.

BASIC FUNCTIONS

- **Switching modes**

- To switch between the modes: CD, FM, Bluetooth, USB, and AUX IN, press the SOURCE button on the unit or the corresponding button (FM, CD, , AUX, USB) on the remote control.

- **Volume control**

- Increase: Rotate the VOLUME control on the main unit clockwise or press the VOL+ button on the remote.
- Decrease: Rotate the VOLUME control on the main unit anticlockwise or press the VOL- button on the remote.

- **EQ effects**

- Press the EQ button on the remote repeatedly to cycle through a set of equalizer presets to adjust the sound. Choose from CLASSIC, ROCK, POP, JAZZ, DANCE, LIVE, and O .

- **Loudness function**

- This function will increase the level of bass at low volume levels. Press the LOUD button on the remote to enable the effect. Press again to disable the Rect.

- **Mute function**

- Press the button at any time to mute the sound output. Press again to unmute.

- **Tone controls**

- To adjust the bass, use the BAS+ or BAS- buttons on the remote control. To adjust the treble, use the TRE+ or TRE- buttons on the remote control.

- **Standby mode**

- Press the STANDBY button on the unit or the remote to put the system into standby mode. To resume normal operation, press this button again. NOTE: This unit is designed to enter STANDBY mode automatically, after about 15 minutes (approximately) of inactivity. Press the STANDBY button to wake the unit.

FM radio operation

Press the source button on the unit, or the FM button on the remote control to enter the FM mode. (FM frequency: 87.50-108.00MHz)

- Press the / buttons on the remote control to decrease or increase the frequency in 0.05MHz increments.
- Press and hold the / buttons on the remote control to scan through the frequency range quickly. The scan will stop once it has found a station.
- Press and hold the button to scan through the frequency range quickly; it will store any stations found automatically.
- **SAVE a station:**
- You can store up to 40 FM stations in memory.
- Press the FREQ button and then, using the number buttons enter the frequency that you want to store.
- Press the SAVE button, it will show " P01 " on the display.
- Press the / button to select the station preset number you want to save the frequency under.
- Press the SAVE button again to confirm.
- Recall the preset stations:

- Press the / button to recall your stored stations.

CD operations

Press the source button on the unit, or the CD button on the remote control to enter the CD mode. Press the button to open the disc drawer, put a CD in, then press the button again to close.

- Press the button to pause or play the song.
- Press the button on the remote control to stop playing, and press the button to re-start.
- Press the / button to skip to the previous or next song.
- Press the / button on the remote control to fast forward or fast rewind the playback, and press repeatedly to resume normal speed.
- To directly select a special c song press the number buttons 0-9 on the remote control.

Example:

- If the tracking number consists of two digits, for example, 25, press button “2”, and then button “5” to select the 25th track.
- If the tracking number is a one-digit number, for example, 9, press “0” first, then “9” to skip to the 9th track.
- REPEAT button:
 - While in playing mode, press the button to set repeat mode.
 - For CD and CD-R discs, press the button to repeat playing songs.
 - Press once to repeat the current song. Press again to repeat all tracks.
 - Press a third time to cancel.
- Press the button on the remote control to play the tracks in random order. Press again to resume.
- You can set the disc to play tracks in a programmed order:
 - Press the button on the remote control to stop playing.
 - Press the PROGRAM button on the remote control. The screen displays: P01.
 - Press the number buttons on the remote control to select the tracks to program.
 - Press the / buttons on the remote control to skip between the program tracks.
 - Press the PROGRAM button on the remote control to con rm.
 - To begin the programmed order, press the button.
 - To cancel the program sequence, press the button twice.

Notes:

- MP3 format is supported.
- Unsupported le formats are skipped. For example, Word documents (.doc) or MP3 files with extension .dlf are ignored and not played.

Bluetooth Operation

The Microsystem has Bluetooth capability and is able to receive a signal within a range of 7 meters. To pair the Microsystem with a Bluetooth device:

- Press the source button on the unit, or button on the remote control button repeatedly to enter the Bluetooth mode, the“bt”appears to appear and ash on the display.
- Activate your Bluetooth device and select the search mode.
- Select “SHARP XL-B512” from the search list and connect.

- Enter “0000” for a password if prompted.
- When the devices are connected to each other, a confirmation sound will be made. “bt” will stop flashing in the display.
- You can now playback music from your device. Please note that the volume on the Bluetooth source device operates independently of the volume of the unit.
- To turn on the Bluetooth function: switch to another function on the Microsystem; disable the function on your Bluetooth source device, or press the button on the remote control.

Connect other audio devices

Audio (AUX IN) allows your unit quickly and easily to connect to an MP3 player or other external sources.

- Use a 3.5mm audio cable to connect your external audio device to the AUX IN socket on the front panel.
- Press the source button on the unit, or the AUX button on the remote control button to switch to the AUX IN mode.
- You may need to operate the external audio device directly for playback features.
- Please note that the volume on the Audio source device operates independently of the volume of the unit.

USB Operation

It is possible to listen to music via the USB device interface of the unit. Connecting a USB device:

- Switch the unit on and select USB mode by pressing the SOURCE button.
- Connect the USB device to the USB connection socket on the front panel of the unit.
- The unit will now play songs that are saved on the USB device.
- MP3 format is supported.
- Unsupported fewer formats are skipped. For example, Word documents (.doc) or MP3 files with extension .dlf are ignored and not played
- Even when the less is in a supported format (MP3), some may not play or display depending on the compatibility.

In some cases, reading may be as long as 60 seconds, this is not a malfunction.

- Depending on the amount of data and media speed, it may take longer for the unit to read the USB device.
- The maximum USB memory size is 32GB.
- The USB memory device must be formatted in FAT, FAT16, or FAT32

Troubleshooting

No Power

Reason

- Power cable not connected to a wall socket
- The power socket is not switched on

Solution

- Make sure the plug is connected
- Switch the power on
- No Sound from AUX/Bluetooth input

Reason

- Volume is too low
- AUX/Bluetooth source volume is too low

Solution

- Increase the volume
- Increase the output volume of the AUX source
- Sound is distorted from AUX Input

Reason

- Volume is too high
- AUX source volume is too high

Solution

- Reduce the volume
- Reduce the output volume of the AUX source
- Unable to play CD

Reason

- No disc in the tray
- Disc not loaded properly
- Disc is dirty

Solution

- Insert a compatible disc
- Check the disc loaded correctly
- Clean the disc
- Static Sound

Reason

- Poor reception

Solution

- Re-locate the antenna (FM)
- Desired station not found

Reason

- Weak signal
- Station not available in your area
- The unit switches off after 15 minutes of inactivity

Reason

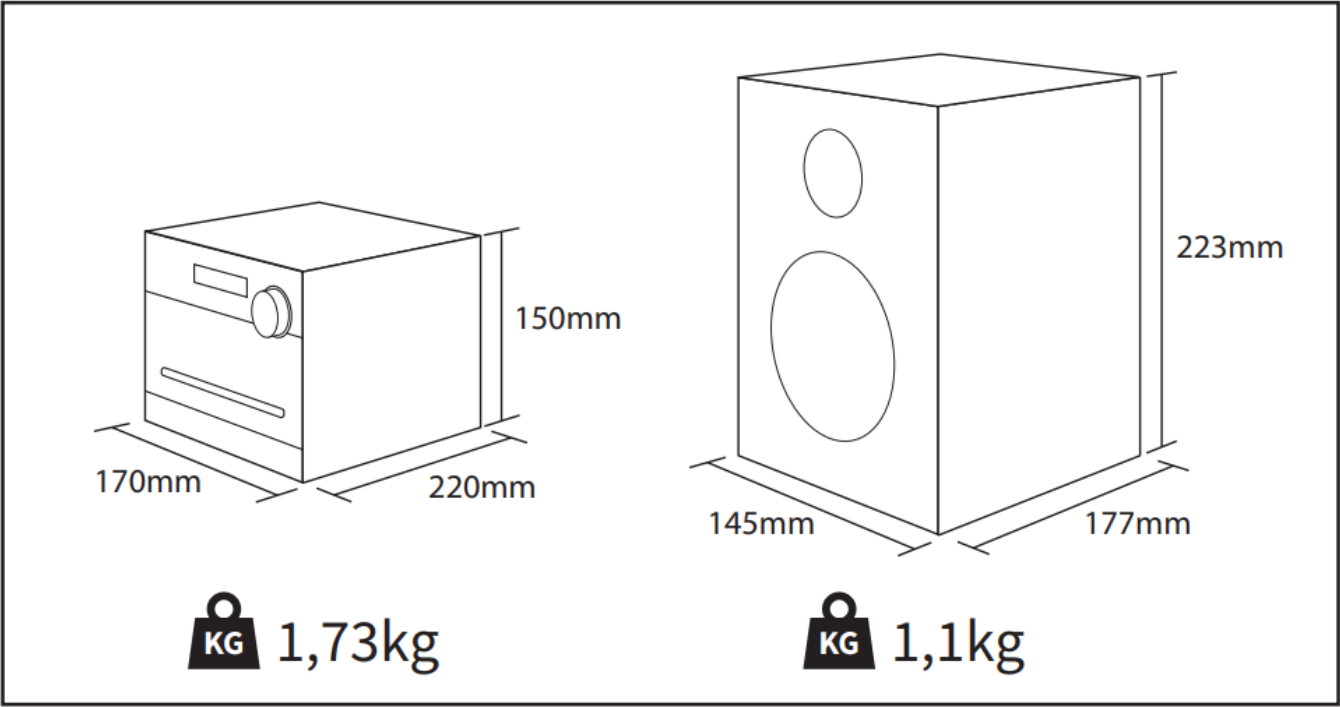
- Auto standby mode in operation

Solution

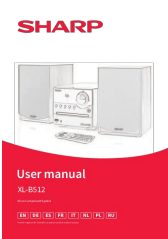

- This unit is designed to enter STANDBY mode automatically after 15 minutes of inactivity. Press the STANDBY button to wake up the unit.

Technical specification

Model		XL-B512		
Radio Signal		87.5-108MHz		
Power Supply		AC 220-240V~ 50Hz		
Power Consumption		34 W		
Standby Power Consumption		<0,5 W		
Output Power		2 x 7,5W (RMS)		
Impedance		2 x 8 Ω		
Frequency Response		60Hz – 20KHz		
Bluetooth				
Version		V 5.0		
Maximum power transmitted		<20 dBm		
Frequency bands		2402 MHz ~ 2480 MHz		
CD player				
Disc format		CD, CD-R, CD-RW, MP3		
Remote Control				
Battery Type		2x AAA / 1.5V		
170mm	150mm 220mm KG 1,73kg	145mm	KG 1,1kg	223mm 177mm



Documents / Resources

 <p>User manual XL-B512</p>	<p>SHARP XL-B512 Hi-Fi Micro System [pdf] User Manual XL-B512, Hi-Fi Micro System, XL-B512 Hi-Fi Micro System</p>
 <p>User manual XL-B512</p>	<p>SHARP XL-B512 Hi-Fi Micro System [pdf] User Manual XL-B512, Hi-Fi Micro System</p>

References

- [S Sharp Consumer Products Europe - Sharp Europe](#)
- [S Sharp Consumer Products Europe - Sharp Europe](#)