

SHARP SMD2479JS Smart Microwave Drawer Oven



SHARP SMD2479JS Smart Microwave Drawer Oven User Manual

[Home](#) » [Sharp](#) » SHARP SMD2479JS Smart Microwave Drawer Oven User Manual 

Contents

- [1 SHARP SMD2479JS Smart Microwave Drawer Oven](#)
- [2 Product Usage Instructions](#)
- [3 24 in. Smart Microwave Drawer TM Oven SMD2479JS](#)
- [4 DESIGNED FOR YOUR DREAM KITCHEN](#)
- [5 FEATURES](#)
- [6 COOKING / MENU PRESETS](#)
- [7 ADDITIONAL FEATURES](#)
- [8 OPTIONAL ACCESSORIES](#)
- [9 DIMENSIONS & WEIGHT \(in./lbs.\) \(w x h x d\)](#)
- [10 WARRANTY/UPC](#)
- [11 SPECIFICATIONS](#)
- [12 SIMPLY BETTER LIVING](#)
- [13 Documents / Resources](#)
 - [13.1 References](#)

SHARP®

SHARP SMD2479JS Smart Microwave Drawer Oven



Product Specifications:

- Model: SMD2479JS
- Size: 24 inches
- Capacity: 1.2 cu. ft.
- Power Output: 950 watts
- Features: Works with Alexa, Easy Wave Open, Built-In Airflow Control, Edge-to-Edge Stainless Steel Design

Product Usage Instructions

1. Easy Wave Open Feature:

Utilize the motion sensor by waving up-and-down near it for touchless operation to open the Microwave Drawer™ oven.

2. Cooking with Alexa Voice Commands:

Pair the Sharp Kitchen App with Alexa to enable smart features. Use over 35 voice commands for hands-free cooking. Example: "Alexa, defrost 1 pound of chicken."

3. Built-In Airflow Control:

Choose between proud mount installation or flush mounting without additional trim kits or vent deflectors. Ensure proper airflow for optimal performance.

4. Using the Sharp Kitchen App:

Download and pair the app with your device to activate smart features and voice control capabilities for the Microwave Drawer™ oven.

5. Interior Capacity:

The generous 17 x 16 interior space is suitable for platters, casseroles, and serving bowls. Note: Actual food capacity may be less due to internal measurements.

Frequently Asked Questions (FAQ):

- **Q: Can I use the Microwave Drawer™ oven without connecting it to Alexa or the Sharp Kitchen App?**

A: Yes, you can still use the oven manually without smart features by utilizing the control panel and buttons.

- **Q: How do I clean the exterior of the Microwave Drawer™ oven?**

A: Wipe the stainless steel exterior with a damp cloth and mild detergent. Avoid using abrasive cleaners that may damage the finish.

- **Q: What is the purpose of the Easy Touch Automatic Drawer System?**

A: The Easy Touch system allows for smooth closing of the drawer to prevent spills and accidents while operating the Microwave Drawer™ oven.



24 in. Smart Microwave Drawer™ Oven SMD2479JS

- Works with Alexa¹, and the Sharp Kitchen
- App for iOS and Android Devices
- Enjoy Hands-Free Cooking with Over 35 Alexa Voice Commands with the Amazon Alexa App or your Echo device²
- “Easy Wave Open” for Quick, Touchless Opening of The Microwave Drawer™ Oven
- Concealed, Touch Glass Control Panel opens to a Convenient 45° Angle.
- Edge-to-Edge Stainless Steel Design with Convenient Viewing Window
- Includes Built-In Airflow Control for Flush Mounting



DESIGNED FOR YOUR DREAM KITCHEN

- Over 35 convenient and simple voice commands help make the SMD2479JS Microwave Drawer™ oven a welcome addition to your smart home. What could be easier than just asking, “Alexa, defrost 1 pound of chicken” to your Amazon Echo device? Our wide selection of Alexa commands and Sensor Cook & Defrost menu items take the guesswork out of cooking. Download the Sharp Kitchen app and pair it with Alexa to enable the smart features.
- The Easy Wave Open feature lets you wave up-and-down near the motion sensor for touchless operation, and the Microwave Drawer™ oven will glide open. With the touch of a button or a gentle nudge, our patented Easy Touch Automatic Drawer System smoothly closes the oven to avoid messy spills.
- The concealed, Touch Glass Control panel is easy-to-see and operate at a convenient 45° angle, keeping all the controls at your fingertips when you need them. The modern stainless steel design with bright, LED interior lighting and stylish floor pattern compliments your kitchen and pairs beautifully with other stainless steel appliances.
- The SMD2479JS Sharp Microwave Drawer™ oven features Built-In Airflow venting. Now you can choose the traditional “proud mount” installation or flush mounting for a streamlined finish without additional trim kits or vent deflectors. The optional pedestal accessory for the SMD2479JS slides into a standard dishwasher cutout for a built-in look without the need for custom cabinetry.



- Pairing the SHARP KITCHEN APP activates the smart features and voice control.
- Just Ask Alexa, “Alexa, open the microwave” for a little help in the kitchen.
- Generous 17" x 16" interior is perfect for platters, casseroles & serving bowls.
- Pedestal Accessory slides under the counter for hassle-free installs.

FEATURES

- Finish Stainless Steel
- Drawer Opening Voice, Mobile App, “Easy Wave Open”
- Motion Sensor or Open/Close Button
- Width 24"
- Capacity (cu. ft.) 1.2
- Output Power (watts) 950
- Interior Light LED
- Timer/Settings Yes
- Open/Close Yes
- Start/+30 Sec Yes
- Stop/Clear Yes
- Power Level 11

- Clock Yes
- Multi-Stage Cooking 4
- Control Lock Yes
- Demo Mode Yes
- Microwave ON Indicator Yes
- End of Cooking Reminder Yes
- Auto Start Yes
- Standby Mode Yes

CONTROL PANEL

- Control Panel Location Center/Top
- Control Panel Type Glass Touch, Drop-Down 45° Angle
- Display Type LCD
- Display Color White on Black Background

COOKING / MENU PRESETS

- Popcorn Sensor
- Reheat Sensor
- Defrost Settings Ground Meat, Steaks/Chops, Boneless Poultry, Bone-in Poultry, Roast, Casserole or Soup
- Sensor Cook Baked Potatoes, Sweet Potatoes, Fish/Seafood, Brown Rice, White Rice, Quick Fresh Vegetables, Longer Fresh Vegetables, Steamer Bags, Frozen Vegetables, Ground Meat, Frozen Entrées
- Melt, Soft & Warm Options Butter, Chocolate, Ice Cream, Cream Cheese, Syrup, Dessert Topping
- Other Menus Beverage Reheat, Hot Water, Hot Cereal

ADDITIONAL FEATURES

- Works with Alexa Yes
- Mobile Application Yes, available for iOS and Android
- WiFi Connectivity Yes
- Oven Floor Patterned Glass
- Flush Mount Ready Yes, Vent Built into the Bottom

OPTIONAL ACCESSORIES

- Product Name Under the Counter Drawer Pedestal
- Model SKMD24U0ES
- Color Stainless Steel or Custom Panel Ready
- UPC 074000620865

ADDITIONAL SPECIFICATIONS

Power Source 120V, 60Hz / 14.5A / 1.67 KW

DIMENSIONS & WEIGHT (in./lbs.) (w x h x d)

- Cavity Interior (w x h x d) 17-11/32" x 7-7/8" x 16-37/64"
- Product Dimensions 23-9/16" x 16" x 23-1/4"
- Shipping Dimensions 29-11/16" x 21-1/2" x 29-1/16"
- Product Weight / Shipping Weight 74.0 lbs. / 85.8 lbs.
- Standard Mount Cutout Dimensions 22-1/8" x 15-9/16" x 23-1/2"
- Flush Mount Cutout Dimensions 23-7/8" x 16-1/4" x 23-1/2"

WARRANTY/UPC

- Parts 1 year
- Labor 1 year
- Magnetron Tube 5 years (parts only)
- UPC 074000622067

1Must register with Amazon Alexa App. 2Amazon Echo device not included.

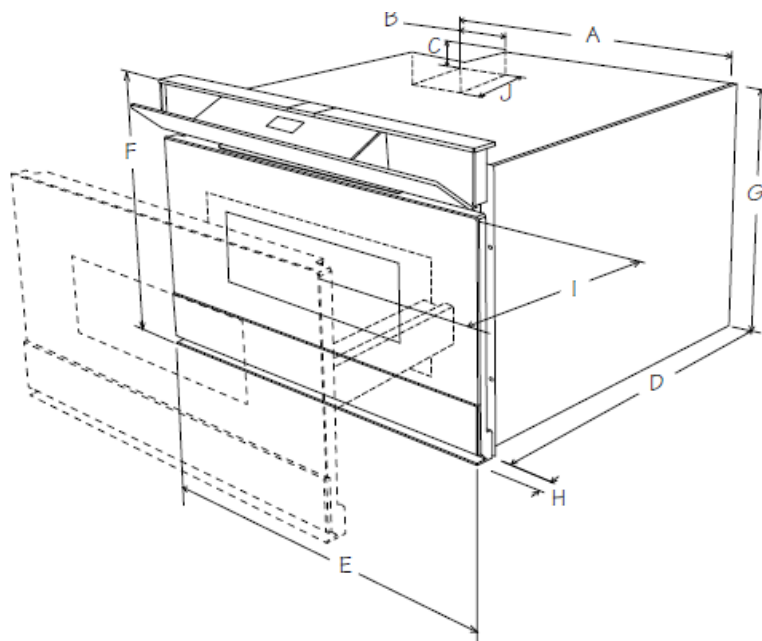
Amazon, Alexa, and all related marks are trademarks of [Amazon.com](https://www.amazon.com), Inc. or its affiliates. Internal capacity calculated by measuring maximum width, depth and height. Actual capacity for holding food is less. Product specifications and design are subject to change without notice.

SPECIFICATIONS

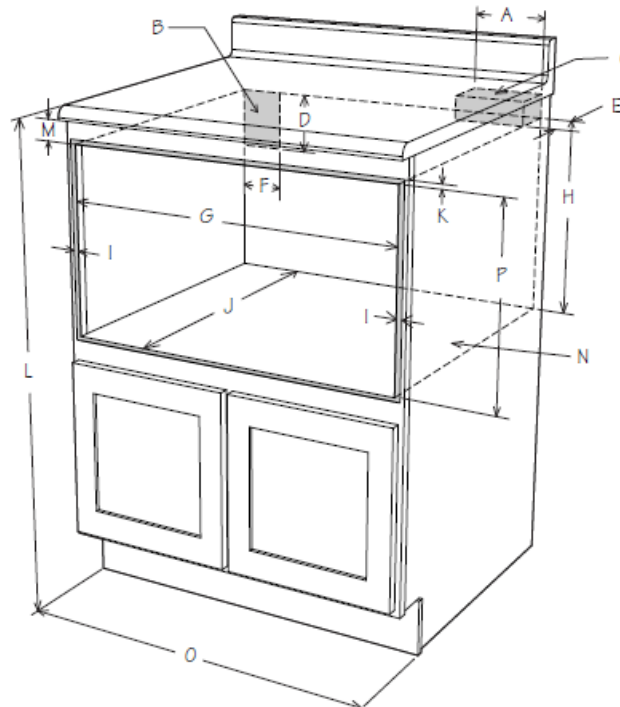
- The following are measurements only. Do not use to install microwave drawer.
- For detailed installation instructions, please refer to the installation manual

PRODUCT DIMENSIONS

- A. 21-5/8" (549.28 mm)
- B. 4-11/16" (119.06 mm)
- C. 1-3/4" (44.45 mm)
- D. 21-7/8" (555.63 mm)
- E. 23-5/8" (600.07 mm)
- F. 16" (406.4 mm)
- G. 14-19/32" (370.68 mm)
- H. 1-17/32" (38.89 mm) door thickness
- I. 15" (381 mm) auto drawer opening
- J. 4" (101 mm)



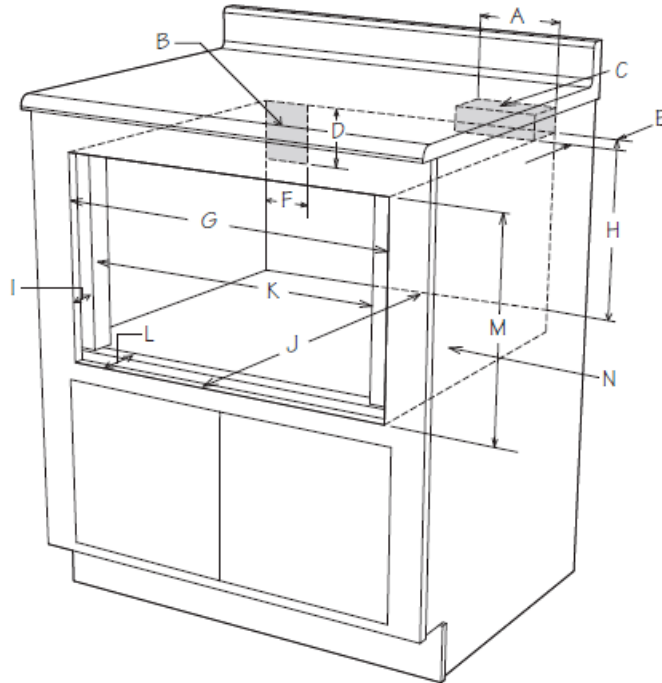
STANDARD MOUNT MEASUREMENTS



- A. 6" (152.40 mm)
- B. Suggested electrical outlet location
- C. Anti-Tip block
- D. 5" (127 mm)
- E. 3-1/2" (88.90 mm)
- F. 4" (101.60 mm)
- G. 22-1/8" (561.97 mm) opening
- H. 14-13/16" (376.24 mm) to bottom of Anti-Tip block
- I. Allow 7/8" (22.22 mm) overlap
- J. 23-1/2" (596.90 mm) min. depth
- K. Allow 7/16" (11.11 mm) overlap
- L. 36" (914.40 mm) countertop height

- M. Allow 7/16" (11.11 mm) min. space
- N. Floor must support 100 lb/45.4 kg
- O. 24" (609.60 mm) cabinet min.
- P. 15-9/16" (395.29 mm) opening

FLUSH MOUNT MEASUREMENTS



- A. 6" (152.40 mm)
- B. Suggested electrical outlet location
- C. Anti-Tip block
- D. 5" (127 mm)
- E. 3-1/2" (88.90 mm)
- F. 4" (101.60 mm)
- G. 23-7/8" (606.43 mm)
- H. 14-13/16" (376.24 mm) to bottom of Anti-Tip block
- I. 1-17/32" (38.89 mm)
- J. 23-1/2" (596.90 mm) min. depth
- K. 22-1/8" (561.97 mm)
- L. 1-17/32" (38.89 mm) to front of shelf
- M. 16-1/4" (412.75 mm) opening
- N. Floor must support 100 lb (45.4 kg)

QUESTIONS?

1.800.BE.SHARP

SIMPLY BETTER LIVING

At Sharp Home Electronics Company of America, we are committed to Simply Better Living. Our innovative home appliance products are SIMPLE to use, BETTER than the competition, and encourage a HEALTHY LIFESTYLE.



© 2023 Sharp Electronics Corporation. All rights reserved.

Sharp and all related trademarks are trademarks or registered trademarks of Sharp Corporation and/or its affiliated companies. All other trademarks are property of their respective owners.

Documents / Resources



[SHARP SMD2479JS Smart Microwave Drawer Oven](#) [pdf] User Manual

SMD2479JS Smart Microwave Drawer Oven, SMD2479JS, Smart Microwave Drawer Oven, Microwave Drawer Oven, Drawer Oven, Oven

References

- [a Amazon.com](#)
- [800.be - This website is for sale! - 800 Resources and Information.](#)
- [S Shop Home Appliances & Kitchen Appliances from Sharp USA](#)
- [User Manual](#)

[Manuals+](#), [Privacy Policy](#)

This website is an independent publication and is neither affiliated with nor endorsed by any of the trademark owners. The "Bluetooth®" word mark and logos are registered trademarks owned by Bluetooth SIG, Inc. The "Wi-Fi®" word mark and logos are registered trademarks owned by the Wi-Fi Alliance. Any use of these marks on this website does not imply any affiliation with or endorsement.