

SHARP SPC1038 Atomic Wall Clock



SHARP SPC1038 Atomic Wall Clock User Manual

[Home](#) » [Sharp](#) » SHARP SPC1038 Atomic Wall Clock User Manual 

Contents

- [1 SHARP SPC1038 Atomic Wall Clock User Manual](#)
- [2 Remote Transmitter](#)
- [3 Setting Up the Transmitter \(Do this First\)](#)
- [4 Controls](#)
- [5 Safety Instructions](#)
- [6 References](#)

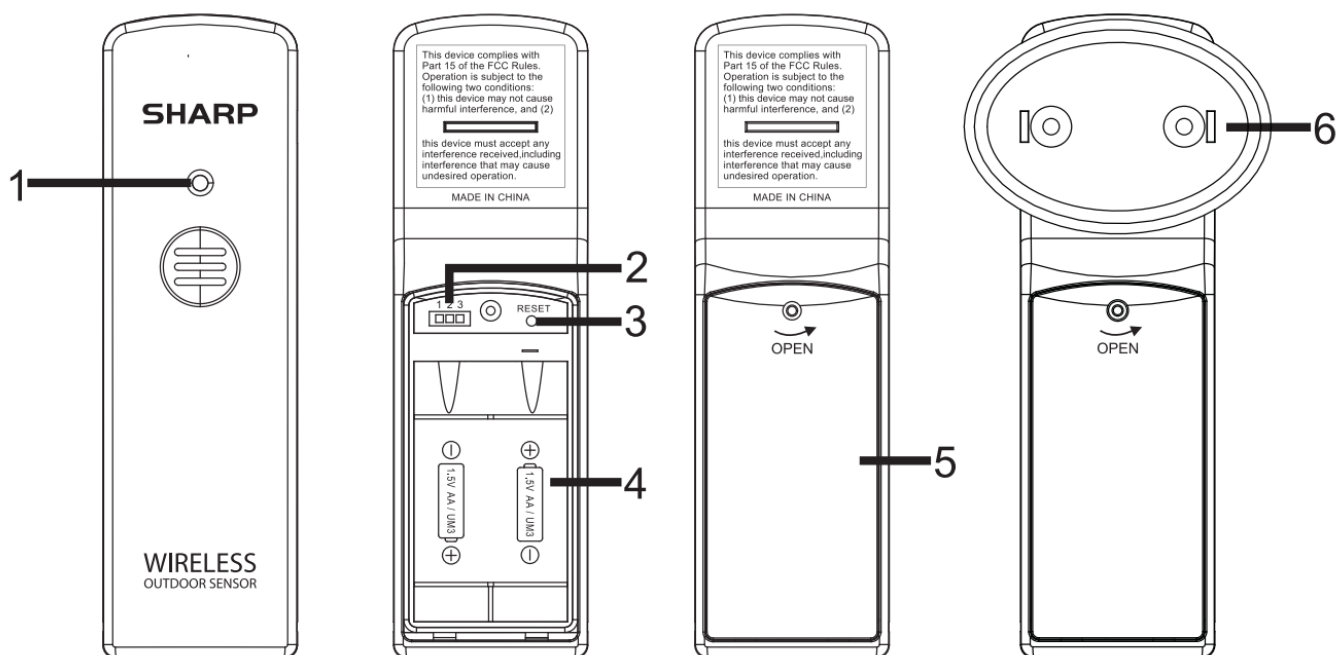
SHARP

SHARP SPC1038 Atomic Wall Clock User Manual



Thank you for your purchase of this quality clock. The utmost care has gone into the design and manufacture of your clock. Please read these instructions and store them in a safe place for future reference.

Remote Transmitter



1. LED Indicator
2. CHANNEL Slide Switch (inside battery compartment)
3. RESET Button
4. BATTERY Compartment
5. BATTERY Door
6. WALL Mount

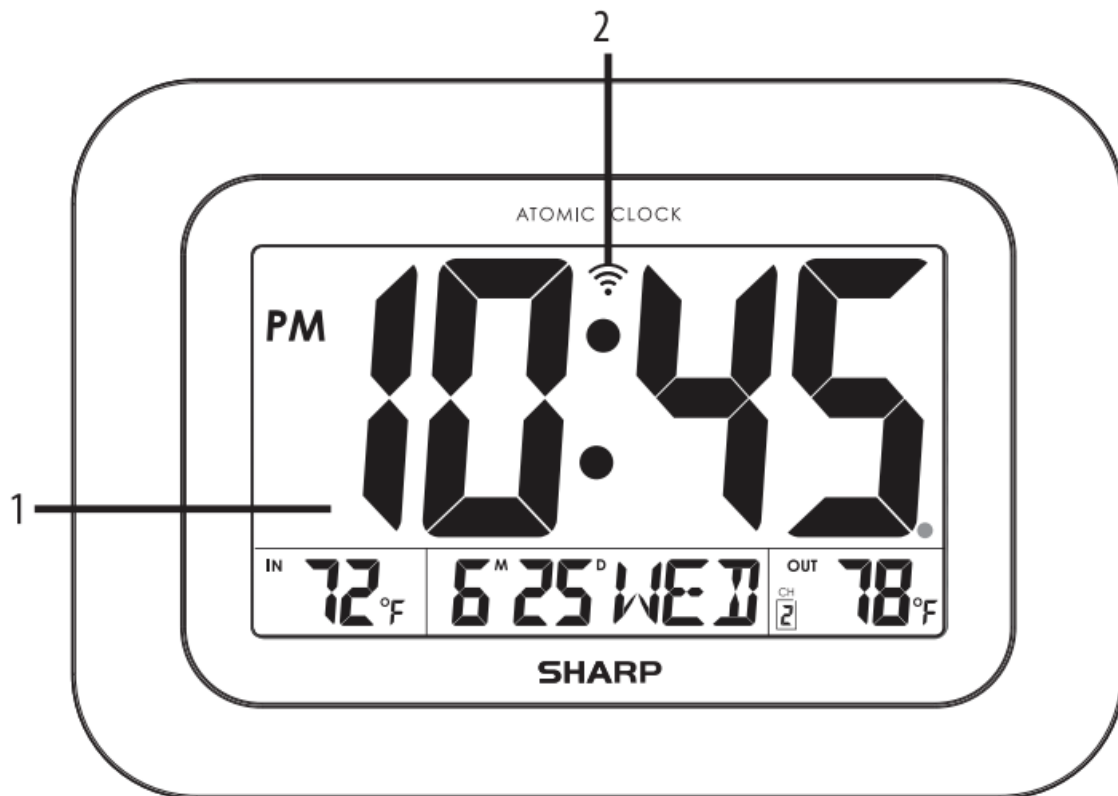
Setting Up the Transmitter (Do this First)

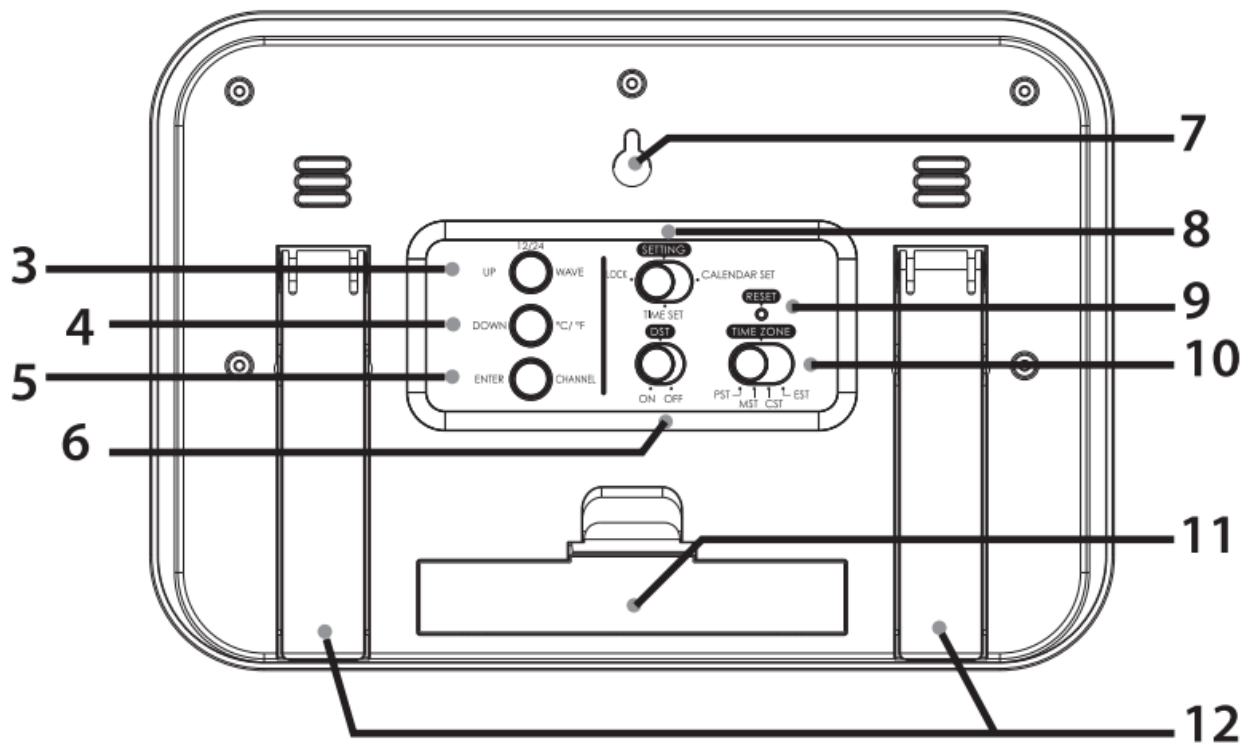
- Remove the battery door insert 2 AA batteries into the battery compartment and follow the polarities marked.
- Slide the switch to Channel 1. Press the RESET button to set the transmitter.
- Press the CHANNEL button at the back of the clock to set channel 1
- Lock the transmitter battery door with the screw.
- Place the units away from metal objects and electrical appliances to minimize interference. Position the receiver within the effective transmission range of 30 meters in usual circumstances.
- If the Channel 1 signal is not received properly, change the transmitter slide button to Channel 2 or 3. Press the CHANNEL button on the clock to 2 or 3 respectively.
- Press and hold the CHANNEL button for three seconds. The unit will start to find a new channel.

NOTE:

1. To receive the transmitter signal, the channels of the receiver and transmitter must match each other.
2. Once the channel is assigned to the transmitter, you can only change it by removing the batteries or resetting the unit.

Controls





1. CLOCK Display
2. SIGNAL Indicator
3. UP/WAVE / 12/24 Button
4. DOWN/°C/°F Button
5. Enter / Channel Button
6. DST Switch
7. WALL MOUNT
8. SETTING Switch
9. RESET Button
10. TIME ZONE Switch
11. BATTERY Compartment & Door
12. TABLE STAND

Quick Start Guide

- Insert batteries into the remote sensor. In the battery compartment, set the Channel to send the outside temperature to number 1.
- Insert batteries into a clock.
- Set the Channel to receive outside temperature to number 1. Locate the Channel button on the back side of the clock. Note the Channel number displayed in the Outside Temperature section of the clock display.
- Locate the Daylight Savings Button and turn it to ON.
- Choose your time zone.
- Now you can either set the time and date manually OR wait until the clock receives the atomic signal. The signal is usually received overnight but it will begin looking for the signal immediately.
- During the day there is a lot of interference and that is why the signal is often received overnight. Once the clock receives the atomic signal and all of the clock settings are in place, the time and date will be automatically updated.

IMPORTANT

- If the Atomic Clock does not receive the WWVB signal immediately, wait overnight & it will be set in the morning.

Clock Display

- Displays time in hours and minutes; calendar display of day, month, and year; indoor temperature and humidity; outdoor temperature; signal strength indicator; daylight saving (DST); and time zone.

Signal Strength Indicator

- The SIGNAL indicator displays signal strength in 4 levels. Wave segment flashing means time signals are being received.

NOTE:

- The unit will automatically search for the time signal at 2:00 a.m., 3:00 a.m., 4:00 a.m., 5:00 a.m., 6:00 a.m. is also available if the signal was not received at 2:00 a.m.
- Closed areas such as airports, basements, tower blocks, or factory is not recommended. While the atomic signal is flashing, the control panel is inactive.

- **UP/ WAVE/ 12/24 BUTTON**

In the TIME setting mode, press the button to decrease the setting values. Hold the button for 3 seconds, the display will change rapidly.

- In the normal mode, press and hold the button for 3 seconds to receive the RCC signal immediately.
- During the Atomic receiving period, press the button again to stop the Atomic reception.
- In normal mode, press the button to switch to the 12/24 time display format.

- **DOWN / °C/ °F BUTTON**

In the TIME / CALENDAR setting mode, press the button to decrease the setting values.

- Hold the button for 3 seconds, the display will change rapidly.
- In normal mode, press the button to switch the temperature unit °C/°F

ENTER/ CHANNEL Button

In the normal mode, press the button to switch between channels 1,2 and 3; press and hold the button for 3 seconds will pair with the outdoor remote sensor.

Daylight Saving Time (DST)

The clock has been programmed to automatically switch when the daylight saving time is in effect. Your clock will show DST during the summertime if you turn on the DST.

Using the Wall Mount

- The transmitter has a desktop and wall mounting structure.
- For the atomic clock, use the recessed hold on the back of the clock to hang it.
- For the transmitter, hang or place the separate wall mounting part in an area protected from direct rain.
- Once the stand is mounted, place the transmitter into the stand on the wall.

SETTING Switch

- In normal, slide the switch to select a different setting mode (LOCK/ TIME SET/CALENDAR SET).

RESET Button

- In case of malfunction, press the button to reset all values to default values.

Time Zone Setting

- Time and calendar can be set manually. As soon as the transmitter signal is received again, the clock will automatically synchronize with the exact time and calendar.
- Slide the SETTING switch to TIME SET or CALENDAR SET to set the time or calendar.
- Press the UP and DOWN buttons to change the value and press the ENTER button to confirm the setting.
- Follow the sequence: Hour> Minute (TIME) and YEAR>Month> Date > Language (CALENDAR).
- Once the time or calendar is set, slide the switch to LOCK.

Battery Replacement

- If the low battery indicator appears beside the outdoor temperature of the main unit, it indicates that the transmitter batteries need replacement.
- If the low battery is displayed at the top left corner, it indicates that the atomic clock batteries need replacement.

Battery Warning

- Clean the battery contacts and also those of the device before battery installation.
- Follow the polarity (+) & (-) to place the battery.
- Don't mix old and new batteries.
- Don't mix Alkaline, Standard (Carbon-Zinc), or Rechargeable (Nickel-Cadmium) batteries.
- Incorrect battery placement will damage the clock movement and the battery may leak.
- Exhausted battery is to be removed from the product.
- Remove batteries from equipment that is not to be used for an extended period.
- Don't dispose of batteries in a fire. Batteries may explode or leak. Dispose in an ecologically safe manner.

Suggestion

Make sure you read the instructions before operating this clock. We have developed this sophisticated instrument for the best reception performance; however, the signal transmitted from the USA Atomic Clock transmitter will be affected in certain situations. We advise you to note the following instructions:

- It is strongly recommended to start this clock at night and let the clock receive the signal automatically past midnight.
- Always place the unit away from interfering sources such as TV sets, computers, etc.
- Avoid placing the unit on or next to metal plates.

- Areas with access to windows are recommended for better reception.
- Do not start reception in moving articles such as vehicles or trains.



NOTE:

- When the clock is searching for the Atomic signal or outdoor temp. all other functions are disabled.

Safety Instructions

1. Read these instructions – All the safety and operating instructions should be read before this product is operated.
2. Keep these instructions – The safety and operating instructions should be retained for future reference.
3. Heed all warnings – All warnings on the appliance and in the operating instructions should be adhered to.
4. Follow all instructions – All operating and use instructions should be followed.
5. Do not use this apparatus near water – The appliance should not be used near water or moisture – for example, in a wet basement or near a swimming pool, and the like.
6. Clean only with dry cloth.



7. Do not block any ventilation openings, Install by the manufacturer's instructions.
8. Do not install near any heat sources such as radiators, heat registers, stoves, or other apparatus (including amplifiers) that produce heat.
9. Do not defeat the safety purpose of the polarized or grounding-type plug. A polarized plug has two blades one wider than the other. A grounding-type plug has two blades and a third grounding prong. The wide blade or the third prong is provided for your safety. If the provided plug does not fit into your outlet, consult an electrician for replacement of the obsolete outlet.
10. Protect the power cord from being walked on or pinched particularly at the plugs, convenience receptacles, and at the point where they exit from the apparatus.
11. Only use attachments/accessories specified by the manufacturer.
12. Use only with the cart, stand, tripod, bracket, or table specified by the manufacturer, or sold with the apparatus. When a cart or rack is used, use caution when moving the cart/apparatus combination to avoid injury from tip-over.
13. Unplug the apparatus during lightning storms or when unused for long periods.
14. Refer all servicing to qualified personnel. Servicing is required when the apparatus has been damaged in any way, such as the power supply cord or plug damaged, liquid spilled or objects that have fallen into the apparatus have been exposed to rain or moisture, do not operate normally, or have been dropped.
15. Please keep the unit in a good ventilation environment.
16. **CAUTION:** These servicing instructions are for use by qualified service personnel only. To reduce the risk of

electric shock, do not perform any servicing other than that contained in the operating instructions unless you are qualified to do so.

WARNING: The mains plug is used as a disconnect device, the disconnect device shall remain readily operable. This equipment is a Class I or double-insulated electrical appliance. It has been designed in such a way that it does not require a safety connection to the electrical earth. Do not install this equipment in a confined or building-in space such as a bookcase or similar unit, and maintain good

17. ventilation conditions. The ventilation should not be impeded by covering the ventilation openings with items such as newspapers, tablecloths, curtains, etc.

WARNING: All the above markings were located on the external enclosure of the apparatus, except for the label of Date Code was pasted inside the battery compartment. The apparatus shall not be exposed to dripping or splashing and objects filled with liquids, such as vases, shall not be placed on the apparatus.

Caution: Changes or modifications not expressly approved by the party responsible for compliance could void the user's authority to operate the equipment.

WARNING: The battery shall not be exposed to excessive heat such as sunshine, fire, or the like.

Download PDF: [SHARP SPC1038 Atomic Wall Clock User Manual](#)

References

- [User Manual](#)

[Manuals+](#), [Privacy Policy](#)

This website is an independent publication and is neither affiliated with nor endorsed by any of the trademark owners. The "Bluetooth®" word mark and logos are registered trademarks owned by Bluetooth SIG, Inc. The "Wi-Fi®" word mark and logos are registered trademarks owned by the Wi-Fi Alliance. Any use of these marks on this website does not imply any affiliation with or endorsement.