



SHARP QW-NA1DF45EW-EU Dishwasher User Manual

[Home](#) » [Sharp](#) » SHARP QW-NA1DF45EW-EU Dishwasher User Manual 

Contents

- [1 SHARP QW-NA1DF45EW-EU Dishwasher](#)
- [2 SAFETY INSTRUCTIONS](#)
- [3 INSTALLATION](#)
- [4 TECHNICAL SPECIFICATIONS](#)
- [5 BEFORE USING THE APPLIANCE](#)
- [6 LOADING YOUR DISHWASHER](#)
- [7 SOFT-TOUCH](#)
- [8 Alternative basket loads](#)
- [9 PROGRAM TABLE](#)
- [10 THE CONTROL PANEL](#)
 - [10.1 Save Power Mode](#)
- [11 CLEANING AND MAINTENANCE](#)
- [12 Documents / Resources](#)
- [13 Related Posts](#)

SHARP QW-NA1DF45EW-EU Dishwasher



SAFETY INSTRUCTIONS

General Safety Warnings

- Read these instructions carefully before using your appliance and keep this manual for future reference.
- Please check the packaging of your machine before installation and the outer surface of the machine once the packaging has been removed. Do not operate the machine if it appears damaged or if the packaging has been opened.
- Packaging materials protect your machine from any damage that might occur during transportation. The packaging materials are environmentally friendly as they are recyclable. Use of recycled material reduces raw material consumption and decreases waste production.
- This appliance can be used by children aged from 8 years and above, and by persons with reduced physical, sensory or mental capabilities or lack of experience and knowledge if they have been given supervision or instruction concerning the use of the appliance in a safe way and understand hazards involved. Children should not be allowed to play with the appliance.
- Remove packaging and keep it out of reach of children.
- Keep children away from detergents and rinse aids.
- There may be some residue left in the machine after washing. Keep children away from the machine when it is open.

Installation Warnings

- Choose a suitable and safe place to install your machine.
- Only original spare parts should be used with the machine.
- Unplug the machine before installation.
- Check that the indoor electrical fuse system is connected in line with safety regulations.
- All electrical connections must match the values on the plate.
- Ensure the machine does not stand on the electrical supply cable.
- Never use an extension cord or a multiple socket connection.
- The plug should be accessible after the machine is installed.
- After installation, run your machine unloaded for the first time.
- The machine must not be plugged in during positioning.
- Always use the coated plug supplied with your machine.
- If the electrical cable is damaged, it should only be replaced by a qualified electrician.
- Connect the hose directly to the water inlet tap. The pressure supplied by the tap should be a minimum of 0.03 MPa and a maximum of 1 MPa. If the pressure exceeds 1 MPa, a pressure relief valve must be fitted between the connection.

During Usage

- This machine is for domestic use only; do not use it for other purposes. Commercial use will void the guarantee.
- Do not stand, sit or place loads on the open door of the dishwasher.
- Only use detergents and rinse aids produced specifically for dishwashers. Our company is not responsible for any damage that may occur due to misuse.
- Do not drink water from the machine.
- Due to the danger of explosion, do not place any chemical dissolving agents into the machine's washing section.
- Check the heat-resistance of plastic items before washing them in the machine.
- Only put items in the machine which are suitable for dishwashing, and take care not to overfill the baskets.
- Do not open the door while the machine is in operation, hot water may spill out. Safety devices ensure the machine stops if the door is opened.
- The machine door should not be left open. It may cause accidents.
- Place knives and other sharp objects in the cutlery basket in a blade-down position.
- For models with the automatic door-opening system, when the EnergySave option is active, the door will open at the end of a program. To prevent damage to your dishwasher, do not attempt to close the door for one minute after it has opened. For effective drying, keep the door open for 30 minutes after a program has ended. Do not stand in front of the door after the auto-open signal sounds.
- In the case of a malfunction, repair should only be performed by an authorized service company, otherwise, the warranty will be void.
- Before repair work, the machine should be disconnected from the mains. Do not pull the cable to unplug the machine. Switch off the water tap.
- Operation at a low voltage will cause a decline in performance levels.
- For safety, disconnect the plug once a program has finished.

- To avoid an electric shock, do not unplug the machine with wet hands.
- Pull the plug to disconnect the machine from the mains, never pull on the cord.

RECYCLING

- Some machine components and packaging consist of recyclable materials.
- Plastics are marked with the international abbreviations:(>PE<, >PP<, etc.)
- The cardboard parts consist of recycled paper. They can be put into waste paper containers for recycling.
- Material unsuitable for domestic waste must be disposed of at recycling centers.
- Contact a relevant recycling center to obtain information about the disposal of different materials.

PACKAGING AND THE ENVIRONMENT

Packaging materials protect your machine from damage that may occur during transportation. The packaging materials are environmentally friendly as they are recyclable. The use of recycled material reduces raw material consumption and therefore decreases waste production.

CE Declaration of Conformity

We declare that our products meet the applicable European Directives, Decisions and Regulations and the requirements listed in the standards referenced.

Disposal of your old machine

The symbol on the product or on its packaging indicates that this product may not be treated as household waste. Instead, it shall be handed over to the applicable collection point for the recycling of electrical and electronic equipment. By ensuring this product is disposed of correctly, you will help prevent potential negative consequences for the environment and human health, which could otherwise be caused by inappropriate waste handling of this product. For more detailed information about recycling of this product, please contact your local city office, your household waste disposal service or the shop where the product was purchased.

INSTALLATION

Machine positioning

- When positioning the machine, place it in an area where dishes can be easily loaded and unloaded. Do not put the machine in an area where the ambient temperature falls below 0°C.
- Read all warnings located on the packaging before removing the packaging and positioning the machine.
- Place the machine close to a water tap and drain. Take into consideration that the connections will not be altered once the machine is in position.
- Do not hold the machine by its door or panel.
- Leave an adequate distance around the machine to allow ease of movement when cleaning.
- Ensure the water inlet and outlet hoses are not squeezed or trapped and that the machine does not stand on the electrical cable while positioning.
- Adjust the feet so the machine is level and balanced. The machine should be placed on flat ground otherwise it will be unstable and the door of the machine will not close properly.

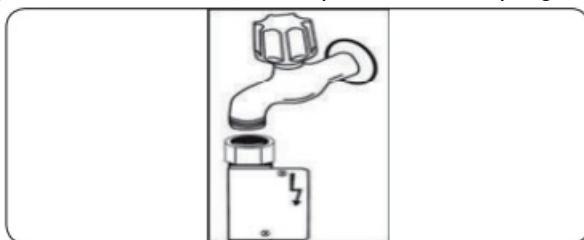
Water connection

- We recommend fitting a filter to your water inlet supply in order to prevent damage to your machine due to contamination (sand, rust, etc.) from indoor plumbing. This will also help prevent yellowing and deposit formation after
- washing.
- Note printing on the water inlet hose!
- If models are marked with 25°, the water temperature may be max. 25 °C (cold
- water).
- For all other models:
- Cold water preferred; hot water max.
- temperature 60 °C.

Water inlet hose



WARNING: Use the new water inlet hose supplied with your machine, do not use an old machine's hose. Run water through the new hose before connecting. Connect the hose directly to the water inlet tap. The pressure supplied by the tap should be a minimum of 0.03 MPa and a maximum of 1 MPa. If the pressure exceeds 1 MPa, a pressure relief valve must be fitted between the connection. After the connections are made, turn the tap on fully and check for water leaks. Always turn off the water inlet tap after a wash program has finished.



Electrical connection

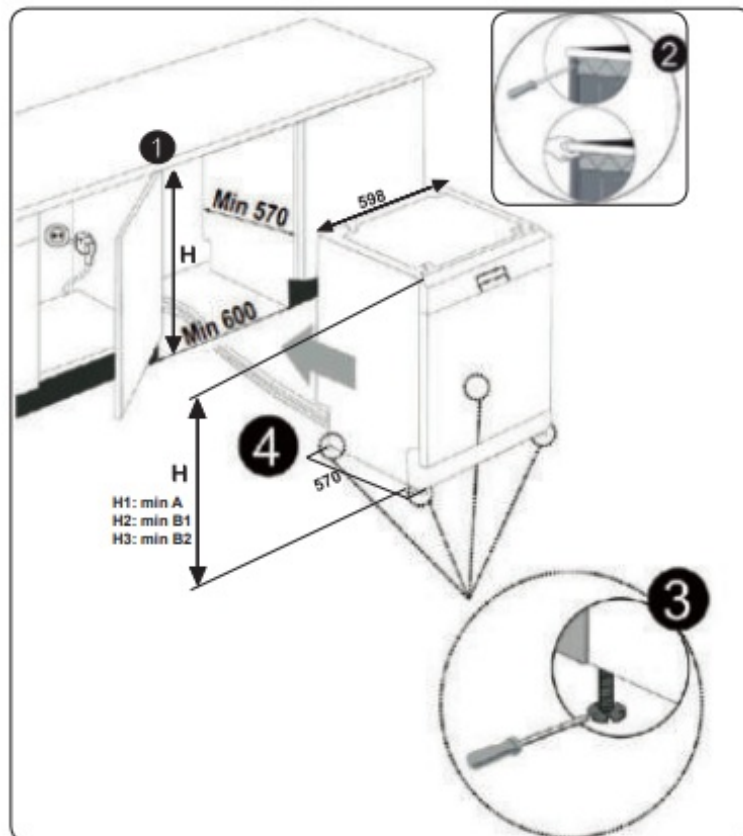
WARNING: Your machine is set to operate at 220-240 V. If the mains voltage supply to your machine is 110 V, connect a transformer of 110/220 V and 3000 W between the electrical connection. Connect the product to a grounded outlet protected by a fuse complying with the values in the "Technical Specifications" table". The earthed plug of the machine must be connected to an earthed outlet supplied by suitable voltage and current. In the absence of earthing installation, an authorised electrician should carry out an earthing installation. In the case of use without earthing installed, we will not be responsible for any loss of use that may occur. The plug on this appliance may incorporate 13A fuse depending on the target country. (For Example UK, Saudi Arabia)

Fitting the machine undercounter

If you wish to fit your machine undercounter, there must be sufficient space to do so and the wiring-plumbing must be suitable to do so (1). If the space under the countertop is suitable for fitting your machine, remove the worktop as shown in the illustration (2).

WARNING: The countertop, of which the machine will be placed under, must be stable in order to prevent imbalance. The top panel of the dishwasher must be removed to fit the machine under the countertop. To remove the top panel, remove the screws that hold it on, located at the rear of the machine. Then, push the panel 1 cm from the front towards the rear and lift it. Adjust the machine feet according to the slope of the floor (3). Fit your

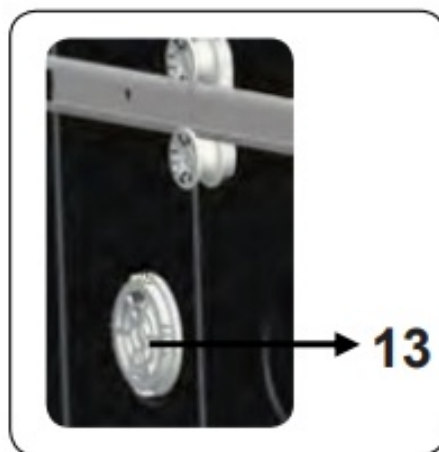
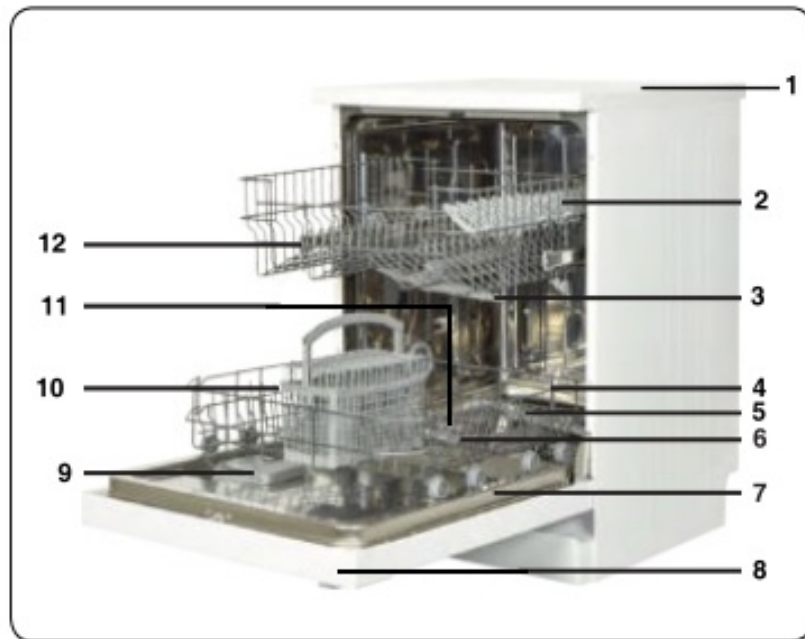
machine by pushing it under the counter taking care not to crush or bend the hoses (4). After removing the top panel of your dishwasher, the machine should be placed in a space of the dimensions shown in the figure below.



	A	B	
	All Products	B ₁	B ₂
Product's Height (±2 mm)	820 mm	830 mm	835 mm

- A: If there is no felt on the top of the product; you should take into account this product's height.
- B1: If there is felt on the top of the product with 2nd basket; you should take into account this product's height.
- B2: If there is felt on the top of the product with 3rd basket; you should take into account this product's height.

TECHNICAL SPECIFICATIONS



General appearance

1. Worktop
2. Upper basket with racks
3. Upper spray arm
4. Lower basket
5. Lower spray arm
6. Filters
7. Rating plate
8. Control panel
9. Detergent and rinse-aid dispenser
10. Cutlery basket
11. Salt dispenser
12. Upper basket track latch
13. Super Active Drying Unit: This system provides better drying performance your dishes.

Capacity	13 place settings
Dimensions	
Height	850(mm)
Width	598(mm)
Depth	598(mm)
Net weight	46 (kg)
Operating voltage / frequency	220-240V 50 (Hz)
Total current	10(A)
Total power	1900(W)
Water supply pressure	Maximum: 1 (Mpa) Minimum: 0.03 (Mpa)

BEFORE USING THE APPLIANCE

Preparing your dishwasher for first use

- Make sure the electricity and supply water specifications match the values indicated in the installation instructions for the machine.
- Remove all packaging material inside the machine.
- Set the water softener level.
- Fill the rinse aid compartment.

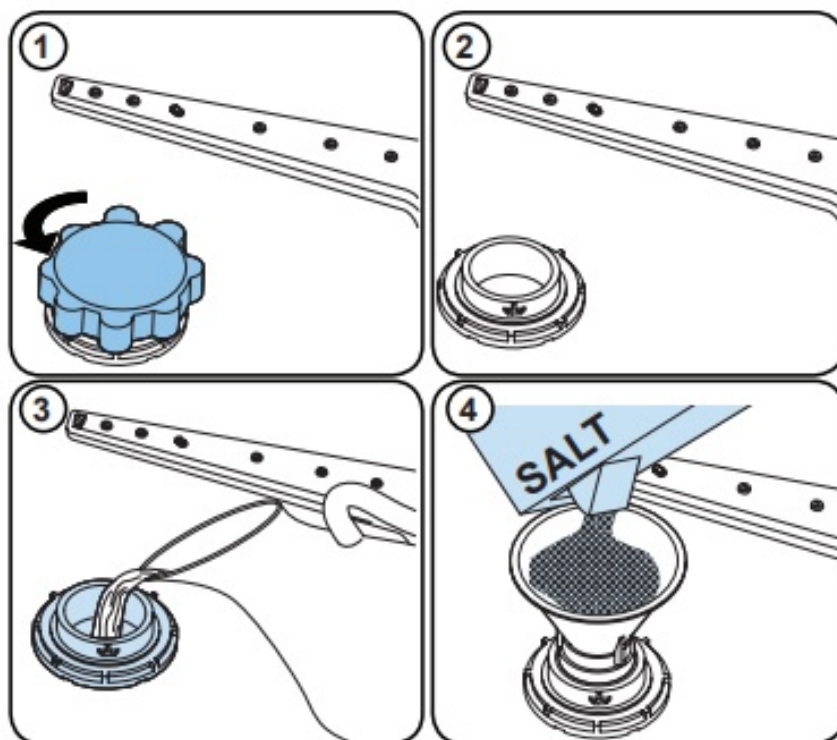
Salt Usage

For a good washing function, the dishwasher needs soft, i.e. less calcareous water. Otherwise, white lime residues will remain on the dishes and the interior equipment. This will negatively affect your machine's washing,

drying and shining performance. When water flows through the softener system, the ions forming the hardness are removed from the water and the water reaches the softness required to obtain the best washing result. Depending on the level of hardness of the inflowing water, these ions that harden the water accumulate rapidly inside the softener system. Therefore, the softener system has to be refreshed so that it operates with the same performance also during the next wash. For this purpose, dishwasher salt is used. Your machine should only use special dishwasher salt to soften the water. Do not use any small grained or powdered type of salts which are easily soluble. Using any other type of salt can damage your machine.


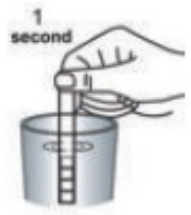
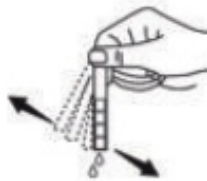







Fill the salt

To add softener salt, open the salt compartment cap by turning it counter clockwise. (1) (2) At first use, fill the compartment with 1 kg salt and water (3) until it is almost overflowing. If available, using a funnel (4) will make filling easier. Replace the cap and close it. After every 20-30 Cycles add salt into your machine until it fills up (approx. 1 kg).



- Only add water to the salt compartment on first use.
- Use softener salt specifically produced for use in dishwashers.
- When you start your dishwasher, the salt compartment is filled with water, therefore put the softener salt in prior to starting your machine.
- If the softener salt has overflowed and you do not start the machine immediately, run a short washing program to protect your machine against corrosion.

Test Strip

Run water through the tap (1min.)	Keep the strip in the water (1sec)	Shake the strip.	Wait (1min.)	Set the hardness level of your machine.
				1  2  3  4  5  6 

NOTE: The level is set to 3 as default. If the water is well water or has a hardness level above 90 dF, we recommend that you use filter and refinement devices.

Water Hardness Table

Level	German dH	French dF	British dE	Indicator
1	0-5	0-9	0-6	L1 is shown on the display.
2	6-11	10-20	7-14	L2 is shown on the display.
3	12-17	21-30	15-21	L3 is shown on the display.
4	18-22	31-40	22-28	L4 is shown on the display.
5	23-34	41-60	29-42	L5 is shown on the display.
6	35-50	61-90	43-63	L6 is shown on the display.

Water Softener System

The dishwasher is equipped with a water softener which reduces the hardness in the mains water supply. To find out the hardness level of your tap water, contact your water company or use a test strip (if available).

Setting

In order to change the salt level, follow the below steps:

- Open the door of the machine.
- Turn on the machine, and press the Program button as soon as the machine is turned on.
- Hold down the Program button until “SL” disappears.
- The machine will display the last setting.
- Set the level by pressing the Program button.
- Turn off the machine to save the setting.

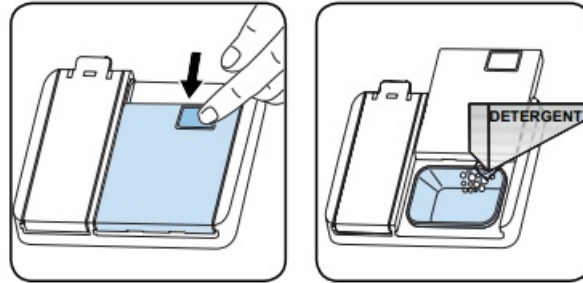
Detergent Use

Only use detergents specifically designed for domestic dishwashers. Keep your detergents in cool, dry places out of reach of children. Add the proper detergent for the selected program to ensure the best performance. The amount of detergent needed depends on the cycle, load size, and soil level of the dishes. Do not overfill the detergent compartment. Otherwise, you can see whitish streaks or bluish layers on glass and dishes which may

cause glass corrosion. Continued over-use of detergent may cause machine damage. Using too little detergent can result in poor cleaning and you may see whitish hard water. See the detergent manufacturer's instructions for further information.

Filling with Detergent

Push the latch to open the dispenser and pour in the detergent. Close the lid and press it until it locks in place. The dispenser should be refilled just before the start of each program. If the dishes are heavily soiled, place additional detergent in the pre-wash detergent chamber.



Using Combined Detergents

- These products should be used according to the manufacturer's instructions.
- Never put combined detergents into the interior section or the cutlery basket.
- Combined detergents contain not only
- the detergent but also rinse-aid, salt replacement substances and additional components depending on the combination.
- We recommend you do not use combined detergents in short program.
- Please use powder detergents in such program.
- If you encounter problems when using combined detergents, please contact the detergent manufacturer.
- When you stop using combined detergents, make sure that water hardness and rinse aid settings are set to the correct level.

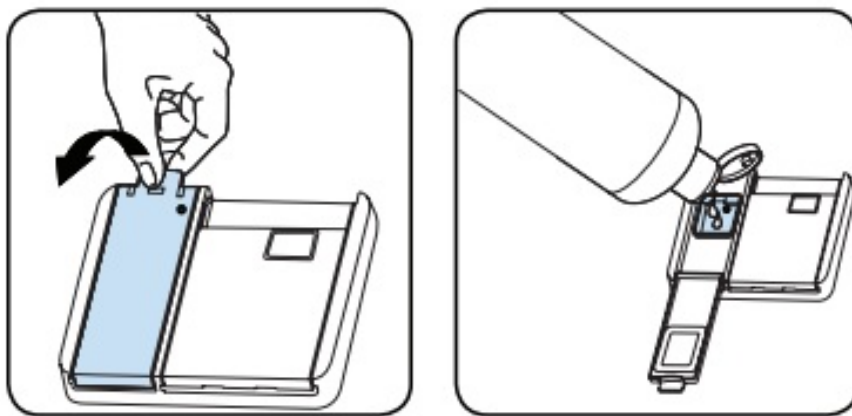
Rinse-Aid Use

Rinse aid helps to dry the dishes without streaks and stains. Rinse-aid is required for stain-free utensils and clear glasses. The rinse aid is automatically released during the hot rinse phase. If an in-sufficient amount of rinse aid is used, whitish stains may be left on the dishes and drying and washing performance will be impaired. If too much rinse aid is used you may see bluish layers on glass and dishes.

Filling the Rinse-aid and Setting

To fill the rinse aid compartment, open the rinse-aid compartment cap. Fill the compartment with rinse aid to the MAX level and then close the cap. Be careful not to overfill the rinse aid compartment and wipe up any spills. In order to change the rinse aid level, follow the below steps before turning on the machine:

- Open the door of the machine.
- Turn on the machine, and press the Program button as soon as the machine is turned on.
- Hold down the program button until "rA" disappears. Rinse aid setting follows water hardness setting.
- The machine will display the last setting. Change the level by pressing the Program button.
- Turn off the machine to save the setting.
- The factory setting is "4".
- If the dishes are not drying properly or are spotted, increase the level. If blue stains form on your dishes, decrease the level.



Level	Brightener Dose	Indicator
1	Rinse-aid not dispensed	r1 is shown on the display.
2	1 dose is dispensed	r2 is shown on the display.
3	2 doses are dispensed	r3 is shown on the display.
4	3 doses are dispensed	r4 is shown on the display.
5	4 doses are dispensed	r5 is shown on the display.

LOADING YOUR DISHWASHER

- For best results, follow these loading guidelines.
- Loading the household dishwasher up to the capacity indicated by the manufacturer will contribute to energy and water savings.
- Manual pre-rinsing of tableware items leads to increased water and energy consumption and is not recommended. You can place cups, glasses, stemware, small plates, bowls, etc. in the upper basket. Do not lean long glasses against one another or they cannot remain steady and may be damaged.
- When placing long stem glasses and goblets, lean them against the basket edge or rack and not against other items.
- Place all containers such as cups, glasses, and pots into the dishwasher with the opening facing downwards; otherwise, water can collect on items.
- If there is a cutlery basket in your machine, you are recommended to use the cutlery grid in order to obtain the best result. Place all large (pots, pans, lids, plates, bowls, etc.) and very dirty items in the lower rack.
- Dishes and cutlery should not be placed above each other.
- Take care not to obstruct the rotation of spray arms.
- Make sure after loading the dishes do not prevent the opening of the detergent dispenser.

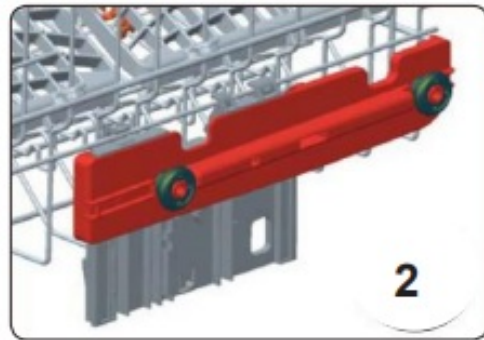
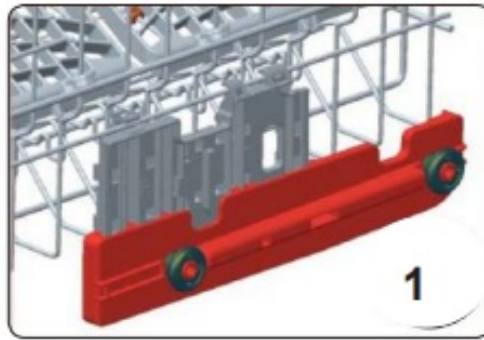
Recommendations

Remove any coarse residue on dishes before placing the dishes in the machine. Start the machine with a full load. To avoid any possible injuries, place long-handle and sharp-pointed knives with their sharp points facing down or horizontally on the baskets.

Upper Basket

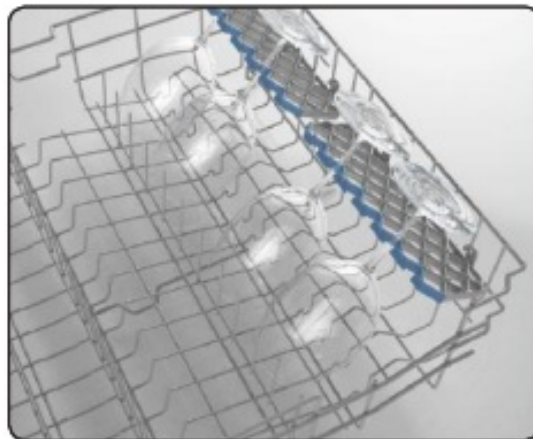
The upper basket includes a mechanism that enables the height of the basket to be adjusted up (1) or down (2)

without having to remove the basket. Hold the basket on both sides and pull it up or push it down, ensuring both sides of the upper basket are in the same position.



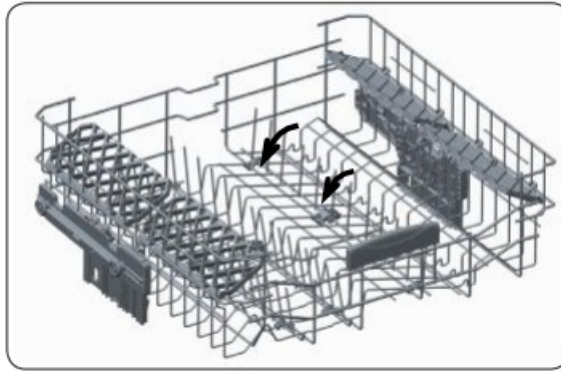
SOFT-TOUCH

Top basket Height Adjustable Rack



These racks are designed to increase the capacity of the top basket. You can place your glasses and cups on the racks. You can adjust the height of these racks. Thanks to this feature, you can place different sizes of glasses under these racks. Thanks to height adjustment plastics mounted on the basket, you can use your racks in 2 different heights. In addition, you can place long forks, knives and spoons on these racks laterally, so that they do not block the revolution of the propeller. The soft-touch feature on the racks serves to place the fine stemmed glass. The wineglass is placed in the area shown at the picture.

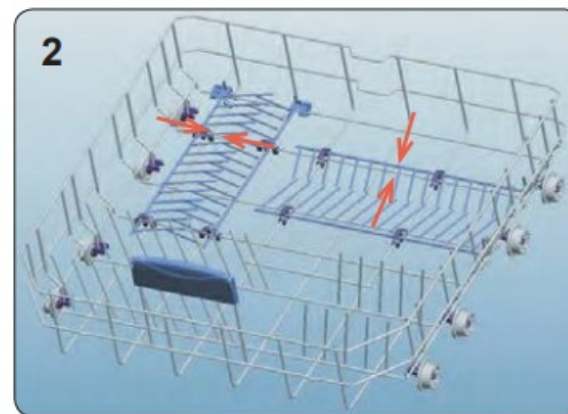
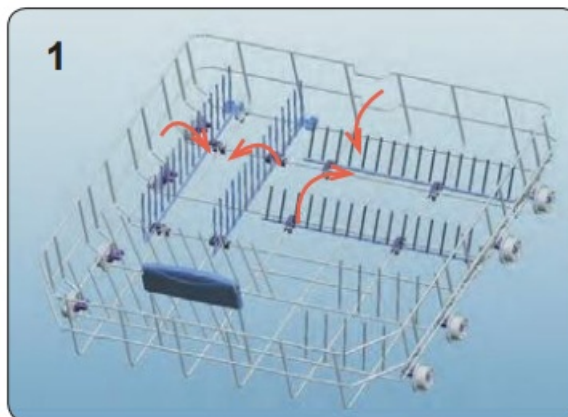
Foldable racks



Foldable racks on the upper basket are designed in order to let you place big items easier such as pots, pans, etc. If requested, each part can be folded separately, or all of them can be folded and larger spaces can be obtained. You can use foldable racks by raising them upwards, or by folding them down.

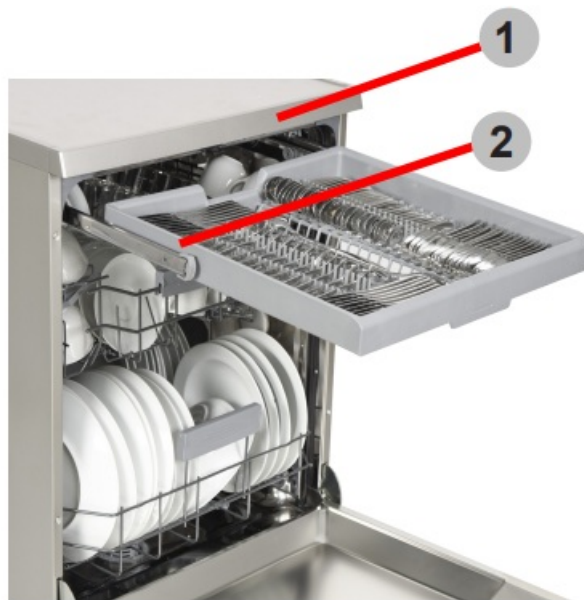
Four Folding Racks

The folding racks are designed so that large items, such as pots and pans, can be easily placed in the dishwasher. Each section can be folded separately. The racks can be folded down or raised up, as shown in the images below.



Upper Cutlery Basket

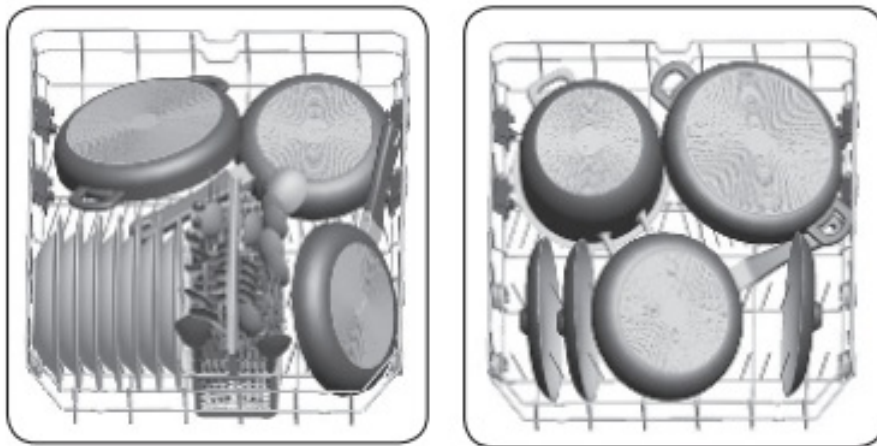
The upper cutlery basket is designed for the placement of large and small cutlery and utensils.



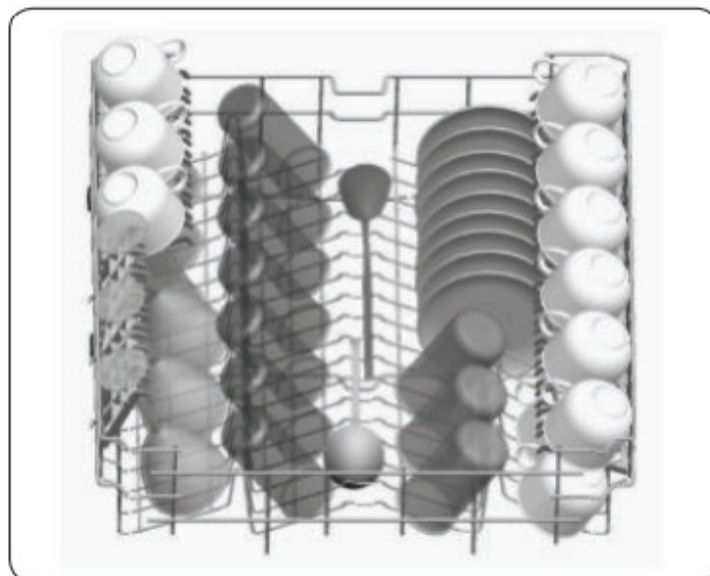
WARNING: Knives and other sharp objects must be placed horizontally in the cutlery basket.

Alternative basket loads

Lower basket



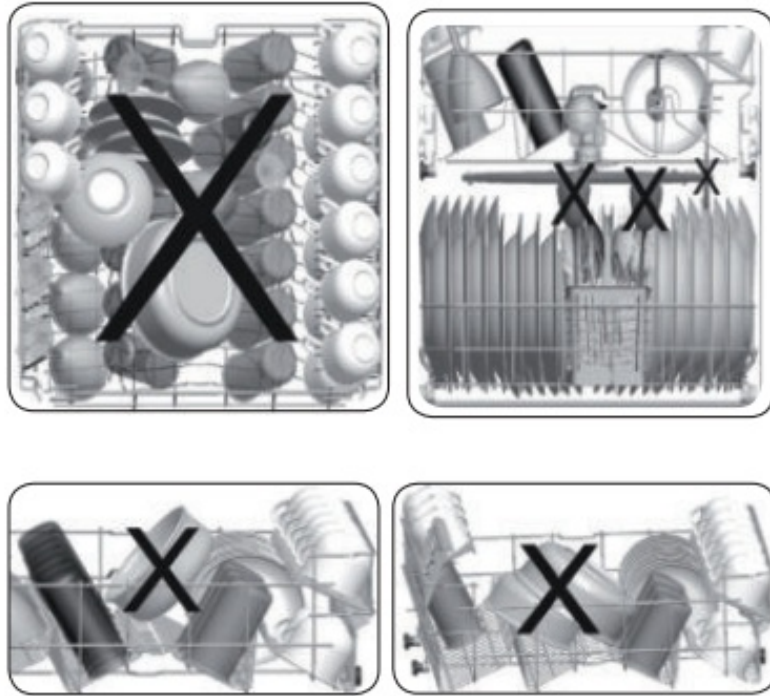
Upper basket



Incorrect Loads

Incorrect loading can cause poor washing and drying performance. Please follow the guidelines to get the best

washing performance.



Unsuitable items for dishwashing

Cigarette ashes, candle leftovers, polish, paint, chemical substances, iron-alloy materials. Forks, spoons, and knives with wooden, bone, ivory or nacre coated handle; glued items, items soiled with abrasive, acidic or base chemicals. Temperature-sensitive plastics, copper or tin-coated containers.

- Aluminum and silver objects.
- Some delicate glasses, ornamental printed porcelains; some crystal items, adhered cutlery, lead crystal glasses, cutting boards, and synthetic fibred items.
- Absorbent items such as sponges or kitchen rugs.

IMPORTANT: In the future, purchase dishwasher-proof kitchenware.

Important Note for Test Laboratories

For detailed information required for tests according to EN normative and a softcopy of the manual, please send the model name and serial number to the following address: dishwasher@standardtest.info

PROGRAM TABLE

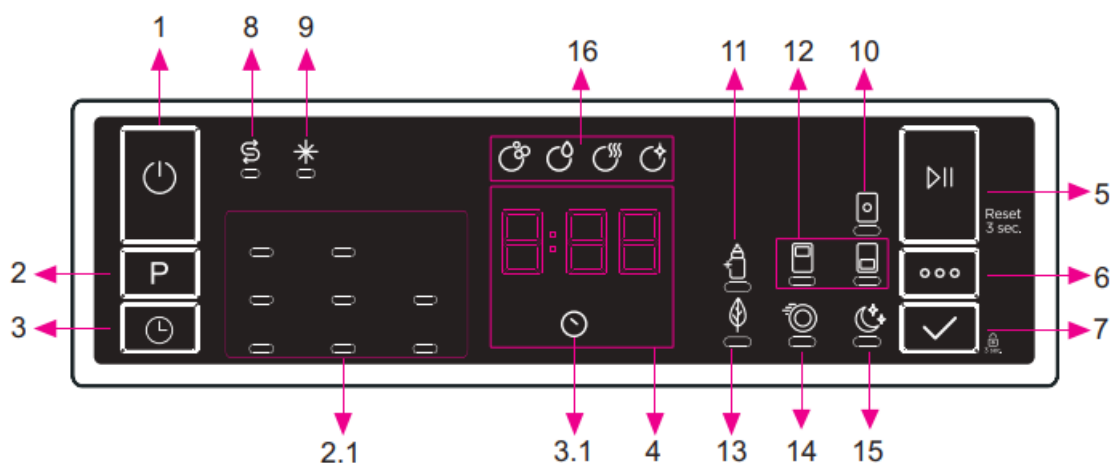
	P1	P2	P3	P4		P5
Program Name:	Quick 30' 40°	Eco 50°	Express 50' 65°	Intensive 65°	Auto	Hygiene 70°
Type of Soil:	Suitable for lightly soiled dishes and quick wash.	Standard program for normally soiled daily using dishes with reduced energy and water consumptions.	Suitable for normally soiled daily dishes with faster program.	Suitable for heavily soiled dishes.	Auto program for heavily soiled dishes.	Suitable for heavily soiled dishes requiring hygienic washing.
Level of Soil:	Light	Medium	Medium	Heavy	Heavy	Heavy
Amount of Detergent: A: 25 cm ³ B: 15 cm ³	A	A	A	A	A	A
Program Duration (h:min)	00:30	03:41	00:50	01:57	01:25 – 01:57	02:07
Electricity consumption (kWh/cycle)	0.740	0.965	1.100	1.700	1.450 – 1.700	1.900
Water consumption (l/cycle)	12.4	9.0	12.0	17.2	11.9 – 17.2	16.0

- The program duration may change according to the number of dishes, the water temperature, the ambient temperature, and selected additional functions.
- Values given for programs other than the eco-program are indicative only
- If your model has a turbidity sensor, it has an Auto program instead of an Intensive program.
- The Eco program is suitable for cleaning normally soiled tableware and is the most efficient program in terms of combined energy and water use. It is used to assess compliance with EU ecodesign legislation.
- Washing tableware in a household dishwasher usually consumes less energy and water than hand dishwashing, when used according to the manufacturer's instructions.
- Only use powder detergent for short programs.
- Short programs do not include drying.
- To assist with drying, we recommend slightly opening the door after a cycle is complete.
- You can access the product database where the model information is stored by reading the QR code on the

energy label.

NOTE: According to regulations 1016/2010 and 1059/2010, the Eco program energy

THE CONTROL PANEL



1. On/Off Button
2. Program Selection Button
 - Program Indicators
3. Delay Button
 - Delay Indicator
4. Remaining Time Indicator
5. Start/Pause Button
6. Options Button
7. select Button
8. Salt Indicator
9. Rinse Aid Indicator
10. Tablet Indicator
11. Extra Hygiene Indicator
12. Half Load Indicators
13. Energy Save Indicator
14. extra Fast Indicator
15. Extra Silent Indicator
16. Washing Step Indicators
 - Washing Step Indicator
 - rinse Step Indicator
 - Drying Step Indicator
 - End Step Indicator

• On/Off Button

Switch the machine on by pressing the On/ Off button. When the machine is on, “—” will be shown on the Display (3).

• Program Selection Button

Select a suitable program by pressing the Program Selection button. The program will start automatically when

the door is closed.

- **Half Load Button**

Press the Half Load button to select the area of the dishwasher containing dishes to be washed. You can select both baskets (i,ii), the upper basket only (i), or the lower basket only (ii). Press the button until the light corresponding to the basket containing the dishes to be washed illuminates. Dishes in other areas will not be washed. If a program is incompatible with the Half Load function, a buzzer will sound.

- **Delay Button**

Press the Delay button to delay the start time of the selected program for 1 hour up to 19 hours. Pressing the button once delays the start time for 1 hour, and continuing to press will increase the delay time. Press the Delay button to change or cancel the delayed start time. If you switch off the machine while the delay timer is active, the delayed time is canceled.

- **Remaining Time Indicator**

Program flow can be monitored via Wash, Rinse, Dry, End indicators, and Remaining Time indicators.

- **Start/Pause Button**

Press the Start/Pause button to start the program. The wash lamp turns on and the Remaining Time Indicator shows the program duration. It also indicates the remaining time during the program flow. If you open the door of your machine when the program is running the duration of the program pauses, and the related washing step indicator blinks.

- **Options Button**

Options can be selected by pressing the Options button repeatedly. The chosen option will be indicated by a blinking LED.

- **Select Button**

Select the option by pressing the Select button. The LED for the chosen option will then remain lit.

- **Salt Indicator**

When there is insufficient softening salt, the salt lack warning indicator turns on and you should fill up the salt chamber.

- **Rinse Aid Indicator**

When the rinse aid level is low, the rinse aid lack a warning indicator turns on and you should fill the rinse aid chamber.

- **Tablet Indicator**

Select the Tablet Detergent function when using a combined detergent that contains salt, rinse aid or other extras. The Tablet Detergent Indicator will remain on for as long as it is selected.

- **Extra Hygiene Indicator**

Select the Extra Hygiene function to increase the wash temperature, for a maximum hygiene washing operation. The Extra Hygiene Indicator will illuminate.

- **Half Load Indicator**

Select the Half Load function to choose which area of the dishwasher contains dishes to be washed. You can select both baskets, the upper basket only, or the lower basket only. Press the button until the indicator corresponding to the basket containing the dishes to be washed illuminates. The Half Load Indicator will illuminate while this function is in operation. Dishes placed in other areas will not be washed.

- **Energy Save Indicator**

Select the Energy Save option to enable the door of the machine to open at the end of the program to increase drying efficiency. This function also saves energy by operating at a lower temperature.

- **Extra Fast Indicator**

Select the Extra Fast function to decrease the duration of a program, providing more economical water usage. The Extra Fast Indicator will illuminate.

- **Extra Silent Indicator**

Select the Extra Silent function for a more sensitive and silent washing operation. The Extra Silent Indicator will illuminate. This option reduces the sound pressure level of the washing.

- **Washing Step Indicators**

The display will show the indicator corresponding to the status of the program in operation. While the Drying indicator is on, the machine will remain silent with respect to the programme you have selected for 15 to 100 minutes.

- Wash
- Rinse
- DDry
- End

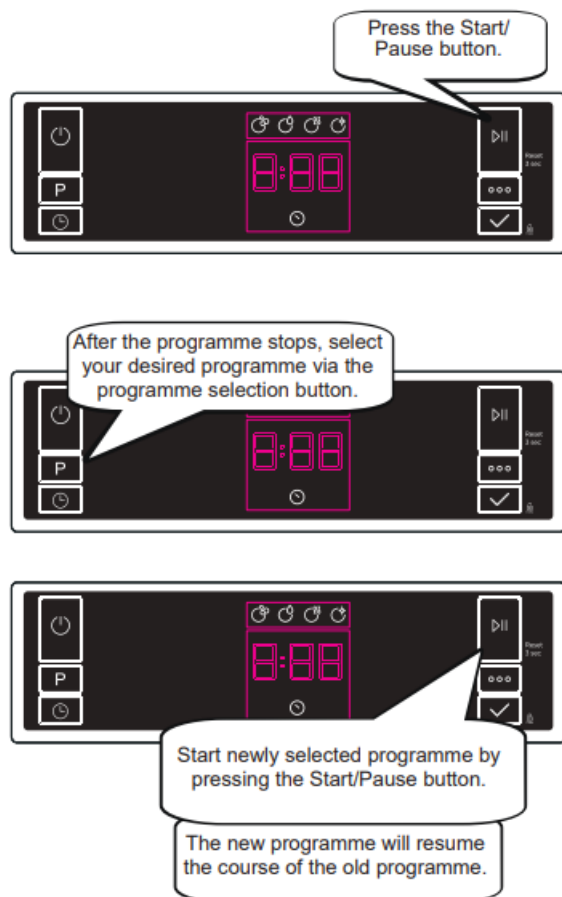
NOTE: Child lock is activated/deactivated by pressing select button (7) for about 3 seconds. When it is activated, all leds blink and “CL” is shown on Remaining Time Indicator (4) once. When it is deactivated, all leds and “CL” blink twice.

NOTE: If you switch the machine to off position after selecting the delay time and the program has started, the delayed time is canceled.

NOTE: To save any program as a favorite program, press program selection (2) and delay (3) buttons at the same time. To select favorite program, press the program selection button (2) for 3 seconds.

Changing a Program

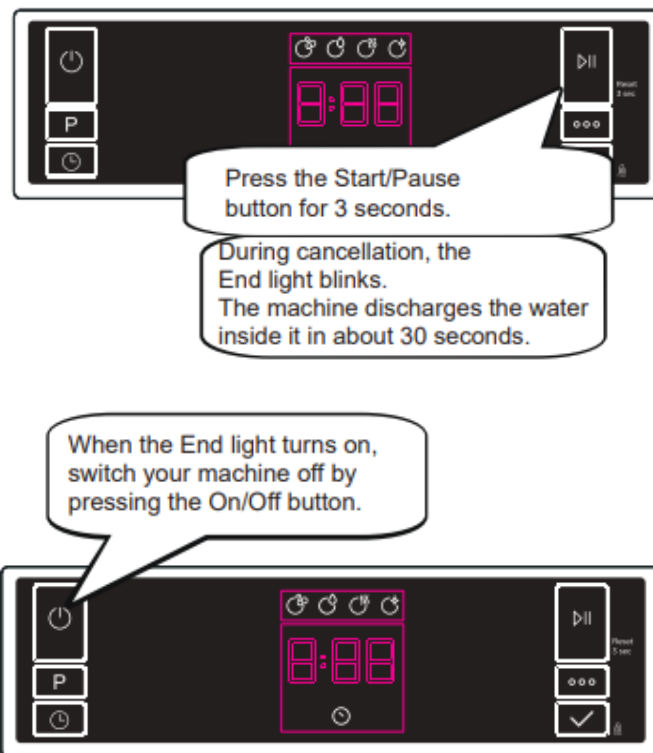
Follow the steps below to change a program while in operation.



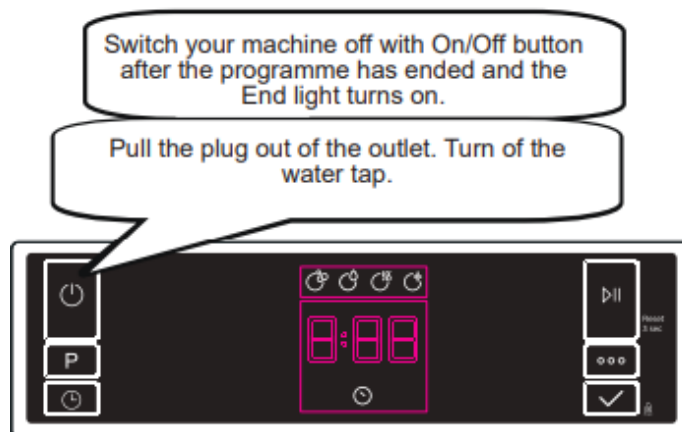
NOTE: Open the door slightly at first to stop a program before it is complete in order to avoid water spillage.

Canceling a Program

Follow the steps below to cancel a program while in operation.



Switching the Machine Off



NOTE: Do not open the door before the program ends.

NOTE: At the end of washing program-me, you can leave the door of your machine ajar to hasten the drying.

NOTE: If the door of the machine is opened or power is cut off during washing the program will continue when the door is closed or the power is restored.

Buzzer Sound Control

To change the buzzer sound level, follow the below steps:

1. Open the door and press the Delay (5) And Options (6) buttons simultaneously for 3 seconds.
2. When the sound setting is confirmed, the buzzer gives a long sound and the machine will display the last set level, from "S0" to "S3".
3. To decrease the sound level press the Delay button (5). To increase the sound level, press the Options button (6).
4. To save the selected sound level, turn off the machine."S0" level means all voices the are off. Factory setting is

“S3”.

Save Power Mode

To activate or deactivate Save Power Mode, follow the below steps:

1. Open the door and press the Half Load (4) and Delay (5) buttons simultaneously for 3 seconds.
2. After 3 seconds, the machine will display the last Setting, “IL1” or “IL0”.
3. When Save Power Mode is activated, “IL1” will be displayed. In this mode, interior lights will turn off 4 minutes after the door is opened, and the machine will turn off after 15 minutes of no activity in order to save energy.
4. When Save Power Mode is deactivated “IL0” will be displayed. If Save Power Mode is de-activated, interior lights will be on as long as the door is open, and the machine will always be on unless it is turned off by user.
5. To save the selected setting, turn off the machine.

In factory setting, Save Power Mode is active.

Natural Ion Tech Model Depending)

This function provides extra hygiene to the machine thanks to Ion Technology. Natural Ion Tech function is activated

by pressing the Half Load (4) button for 3 seconds. Meanwhile, the display will count from 1 to 3. At the end of 3 seconds, “Ion” will be displayed which indicates the Ionizer function is activated. The button is released after “Ion” is displayed. If no intervention by the user, 24 hours after activation of the Ionizer function, it is automatically cancelled.

NOTE: If the machine is turned off, the Ionizer function is canceled.

Natural Ion Tech function does not work with any program. If the Ionizer function is active, ionizer led lights up like dimming during the door is open.

Crystal light (Model Depending)

This technology which have Ion and Light Technology together, provides to extra hygi-ene. It prevents bad odor during a washing program that includes a drying step. Crystalight function is activated or deacti-vated before starting program by pressing Options button (6) for 6 seconds. At the end of 6 seconds, “U1” will be displayed which indicates Crystalight function is activated. When it is deactivated, at the end of 6 se-conds, “U0” will be displayed. Crystalight setting follows Natural Ion Tech setting. Default set is “UO”.

NOTE: If user do not deactivate Crysta light function at the end of program, it will remain active until the machine turns off.

NOTE: If Crystalight or Natural Ion Tech function is active, Natural Ion Tech warning led lights up like dimming during door is open.

CLEANING AND MAINTENANCE

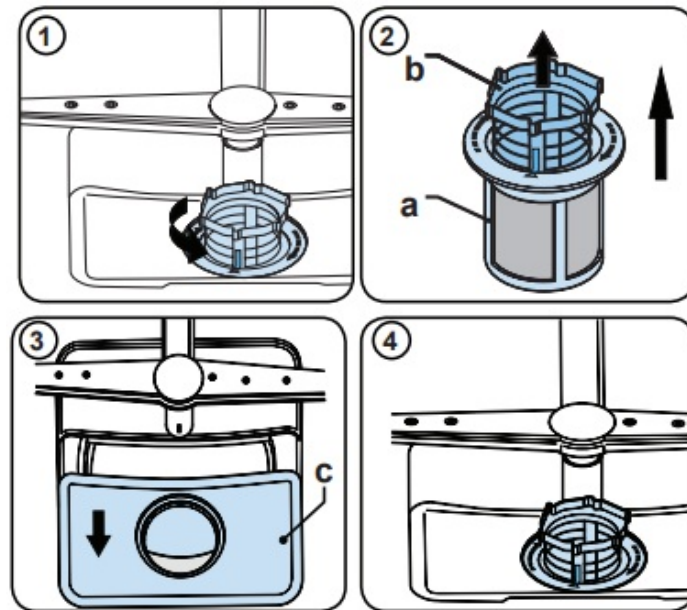
Cleaning your dishwasher is important to maintain the machine’s service life. Make sure that the water softening setting is set correctly and the correct amount of detergent is used to prevent limescale accumulation. Refill the salt compartment when the salt sensor light comes on.

- Oil and limescale may build up in your Dishwasher over time. If this occurs:
- Fill the detergent compartment but do not load any dishes. Select a program which runs at a high temperature and run the Dishwasher empty. If this does not clean your Dishwasher sufficiently, use a cleaning agent designed for use with dishwashers.
- To extend the life of your dishwasher, clean the appliance regularly each month
- Wipe the door seals regularly with a damp cloth to remove any accumulated residue or foreign objects.

Filters

Clean the filters and spray arms at least once a week. If any food waste remains or foreign objects on the coarse and fine filters, remove them and clean them thoroughly with water.

- Micro Filter
- Coarse Filter
- Metal Filter

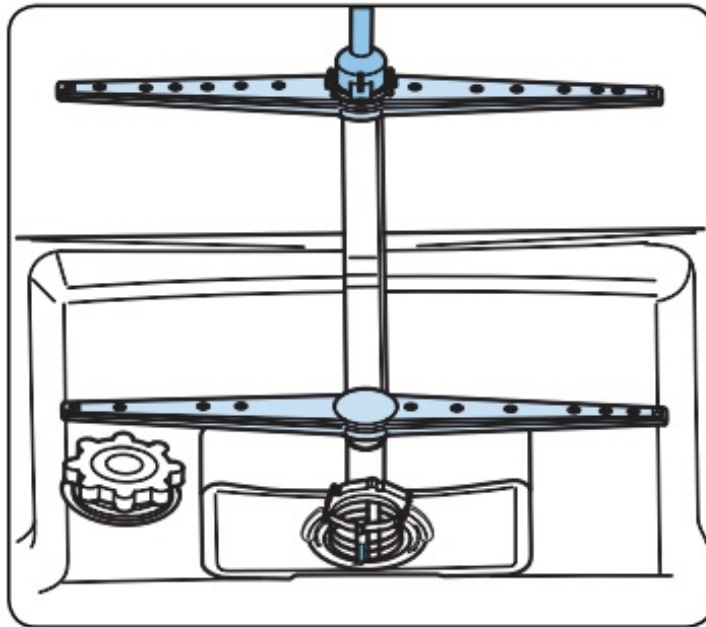


To remove and clean the filter combination, turn it counter clockwise and remove it by lifting it upwards (1). Pull the coarse filter out of the micro filter (2). Then pull and remove the metal filter (3). Rinse the filter with lots of water until it is free of residue. Reassemble the filters. Replace the filter insert, and rotate it clockwise (4).

- Never use your dishwasher without a filter.
- Incorrect fitting of the filter will reduce the washing effectiveness.
- Clean filters are necessary for the proper running of the machine.

Spray arms

Make sure that the spray holes are not clogged and that no food waste or a foreign object is stuck to the spray arms. If there is any clogging, remove the spray arms and clean them under water. To remove the upper spray arm undo the nut holding it in position by turning it clockwise and pulling it downwards. Make sure that the nut is properly tightened when refitting the upper spray arm.



Drain Pump

Large food residues or foreign objects which were not captured by the filters may block the waste water pump. The rinsing water will then be above the filter.

Warning Risk of Injury!

When cleaning the wastewater pump, ensure that you do not injure yourself on pieces of broken glass or pointed implements.

In this case:

1. First always disconnect the appliance from the power supply.
2. Take out baskets.
3. Remove the filters.
4. Scoop out water, use a sponge if required.
5. Check the area and remove any foreign objects.
6. Install filters.
7. Re-insert baskets.

TROUBLESHOOTING

FAULT	POSSIBLE CAUSE	TROUBLESHOOTING

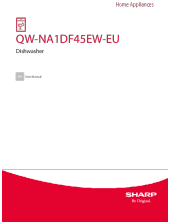
Whitish stains remains on dishes.	Not enough detergent used.	Use the correct amount of detergent, as instructed in the programme table.
	Rinse aid dosage and/or water softener setting set too low.	Increase rinse aid and/or water softener level.
	High water hardness level.	Increase water softener level and add salt.
	Salt compartment cap not closed properly.	Check that the salt compartment cap is closed properly.
Dishes do not dry.	Drying option is not selected.	Select a programme with a drying option.
	Rinse aid dosage set too low.	Increase rinse aid dosage setting.
	Stainless-steel quality of the dishes is insufficient.	Use only dishwasher-proof sets.

Rust stains form on the dishes.	High level of salt in wash water.	Adjust the water hardness level using water hardness table.
	Salt compartment cap not closed properly.	Check that the salt compartment cap is closed properly.
	Too much salt spilled in the Dishwasher while filling it with salt.	Use funnel while filling salt to the compartment to avoid spillage.
	A poor mains grounding.	Consult a qualified electrician immediately.
Detergent remains in the detergent compartment.	Detergent was added when the detergent compartment was wet.	Make sure detergent compartment is dry before use.

TROUBLE CODE	POSSIBLE FAULT	WHAT TO DO
F5	Insufficient water	Make sure the water inlet tap is open and water is flowing.
		Separate the inlet hose from the tap and clean the filter of the hose.
		Contact for service if the error continues.
F3	Continuous water input	Close the tap and contact for service.
F2	Inability to discharge water	Water discharge hose and filters may be clogged.
		Cancel the program.
		If the error continues, contact for service.
F8	Faulty heater	Contact for service.
F1	Overflow	Unplug the machine and close the tap.
		Contact for service.
F7	Overheating failure	Contact for service.
F6	Faulty temperature sensor	Contact for service.
FE	Faulty electronic card	Contact for service.

The installation and repairing procedures should always be carried out by the Authorised Service Agent in order to avoid possible risks. The manufacturer shall not be held liable for damages that may arise from procedures carried out by unauthorised persons. Repairs may be carried out by technicians only. If a component has to be replaced, ensure that only original spare parts are used. Improper repairs or use of non-original spare parts may cause considerable damage and put the user at considerable risk. Contact information for your customer service can be found on the back of this document. Function-relevant genuine spare parts according to the corresponding Ecodesign order can be obtained from Customer Service for a period of at least 10 years from the date on which your appliance was placed on the market within the European Economic Area.

Documents / Resources

	<p>SHARP QW-NA1DF45EW-EU Dishwasher [pdf] User Manual QW-NA1DF45EW-EU Dishwasher, Dishwasher</p>
---	--