



# SHARP PN-65HC1 LCD Monitor User Guide

[Home](#) » [Sharp](#) » SHARP PN-65HC1 LCD Monitor User Guide 



## Contents

- 1 SHARP PN-65HC1 LCD Monitor User Guide
- 2 Introduction
- 3 Preparation (BIG PAD)
- 4 Preparation (Windows)
- 5 Preparation (macOS)
- 6 Preparation (Android/iOS,iPadOS)
- 7 Wireless Connection (Windows)
- 8 Wireless Connection (macOS)
- 9 Wireless Connection (Android)
- 10 Wireless Connection (iOS/iPadOS)
- 11 Wireless Connection (Other functions)
- 12 Wireless Connection (appendix)
- 13 Documents / Resources
  - 13.1 References
- 14 Related Posts

SHARP PN-65HC1 LCD Monitor User Guide

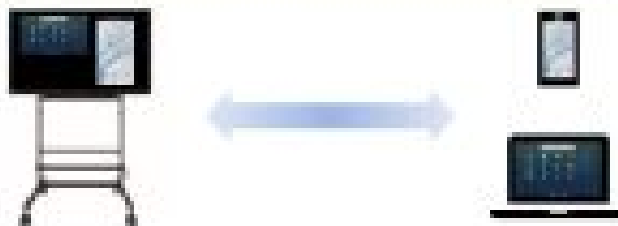


**Product** PN-65HC1PN-75HC1PN-86HC1PN-70HC1E

## Introduction

### [About EShare]

The screen can be shared and displayed mutually between the BIG PAD and the device.  
The BIG PAD and the device to be connected must be connected to the same network.  
\*Connection to all devices is not guaranteed. \*A router or access point is required.



### [Supported devices]

device type	OS	supported version
PC	Windows	Windows 8.1/10
	macOS	macOS v10.15/v11.0
Smart device (Smartphone, tablet PC)	Android	Android 8/9/10
	iOS/iPadOS	iOS 13/14 iPadOS 13/14

\*The download page for the client app shows a link for Chrome OS, but it is not supported.

\*The supported versions of each OS are displayed on the EShare download page in the BIG PAD that appears in step 4 on p.3-5, but please use the version listed in the table. The download page will be updated in the future update.

## Main Features

Feature	About	supported devices
Share Screen	Share the client device screen to the BIG PAD. Android devices are not supported for Audio transmission. Touchback is only available on Windows and macOS devices.	All devices
Mirroring	Mirror the BIG PAD to the client device. (External input and media player screens cannot be shared.	All devices
File sharing	Share audio, video and photo file from smart devices to BIG PAD.	Smart devices
Wireless camera and microphone	Share the images or audio from phone camera or microphone to the BIG PAD in real time.	Smart devices
Multiple screens	Share multiple device screens to BIG PAD at the same time, and the screen of BIG PAD will be split automatically. (Max. 4 screens)	All devices
Display group	Users can share their screen from 1 client device to multiple BIG PAD wirelessly.	All devices

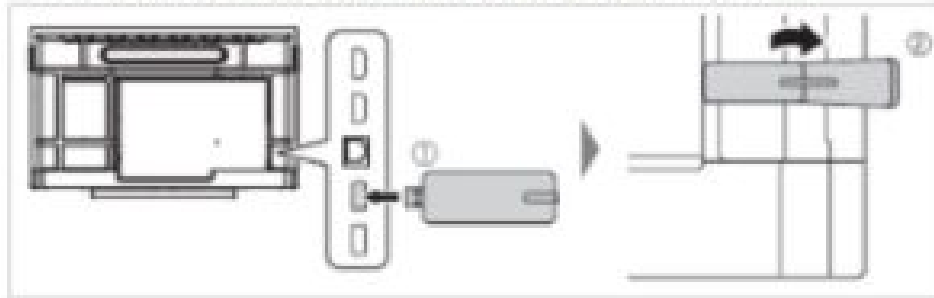
## Preparation (BIG PAD)

### BIG PAD

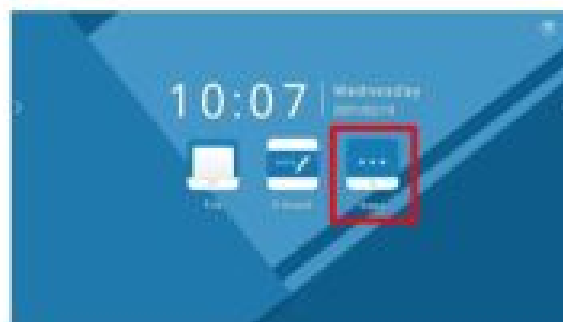
First, connect to a wireless network.

Press the INPUT button on the remote control or the bottom of the BIG PAD to change the input mode to APPLICATION and display the home screen.

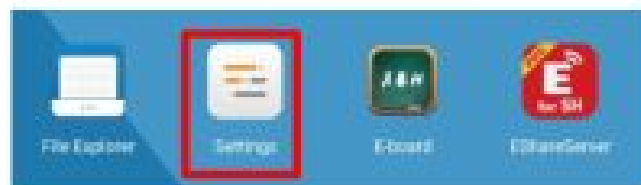
1. Connect the supplied wireless adapter to the USB port on the rear panel as shown below.



2. On the BIG PAD, select "Apps" on home screen in APPLICATION mode.



3. Select "Settings".



4. Select "Network".



5. Enable “Wireless LAN” and connect to the access point.



Make preparations for network connection and application installation on each device.

- **How to set up each device**

(1)Windows	... p.3
(2)macOS	... p.4
(3)Android	... p.5
(4)iOS/iPadOS	... p.5

For detail on how to share the screen on each device, please refer to the following page.

- **How to use each device**

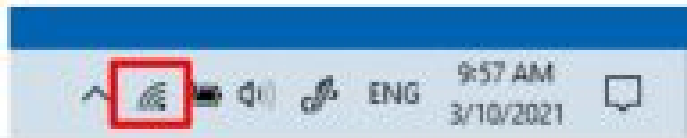
(1)Windows	... p.6
(2)macOS	... p.7
(3)Android	... p.8
(4)iOS/iPadOS	... p.9

## **Preparation (Windows)**

### **Windows PC**

- Configure the wireless LAN connection settings of the PC (The following screens are on windows 10 1903)

Turn on the wireless LAN



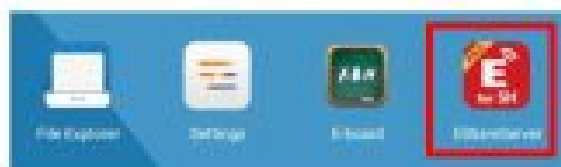
Connect to an access point on the same network as the BIG PAD

- Install “ESharefor SH”. (First time only)

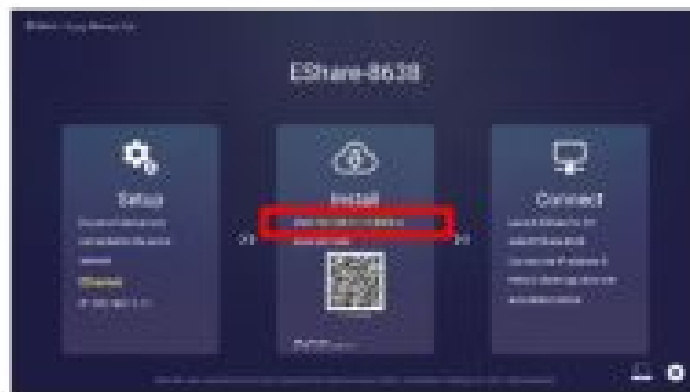
1. On the BIG PAD, select “Apps” on home screen in APPLICATION mode.



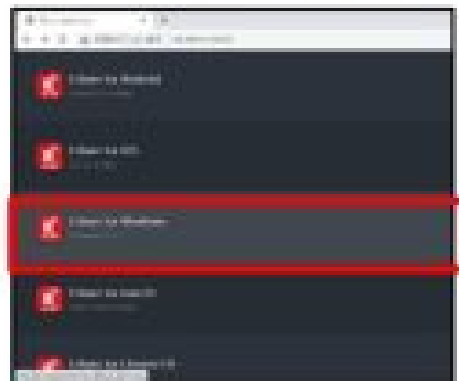
2. Select “EShareServer”.



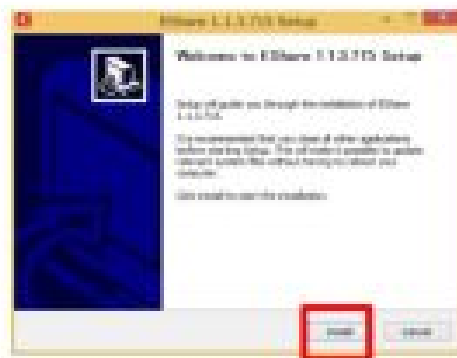
3 .Access the address displayed on the screen of the BIG PAD from your PC.



4 . Select “EShare for Windows” on the PC.



5 .Follow the instructions in the installer to install EShare.

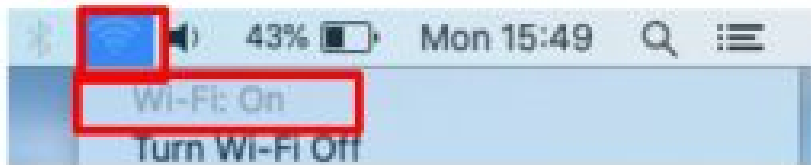


## Preparation (macOS)

### macOSPC

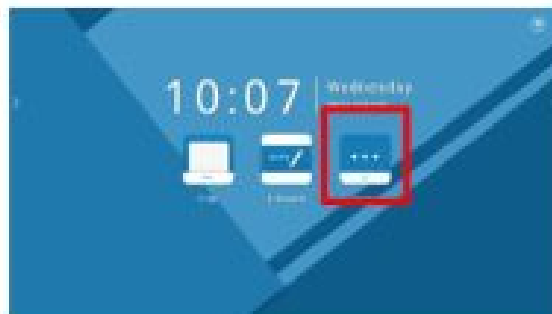
- Configure the wireless LAN connection settings of the PC (The following screens are on macOS v10.15)

## Turn on the wireless LAN

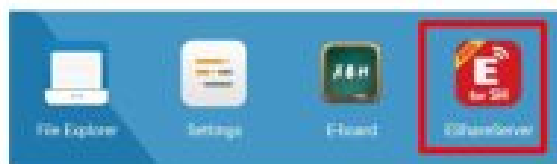


- Install “ESharefor SH”. (First time only)

1. On the BIG PAD, select “Apps” on home screen in APPLICATION mode.



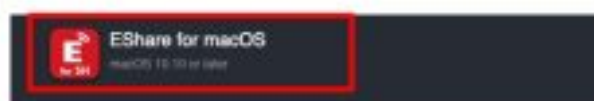
2. Select “EShareServer”.



3. Access the address displayed on the screen of the BIG PAD from your PC.

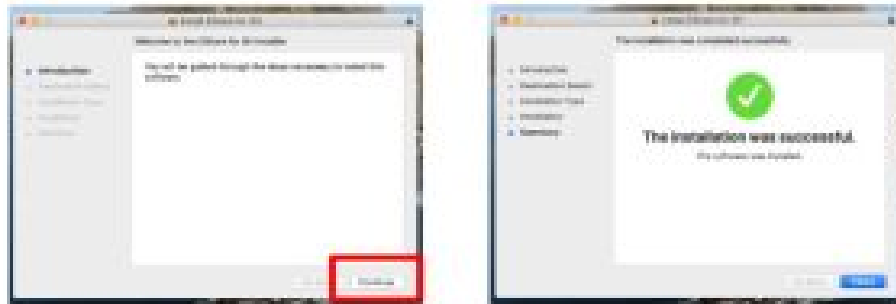


4. Select “EShare for macOS” on the PC.






## 5 . Follow the instructions in the installer to install EShare.



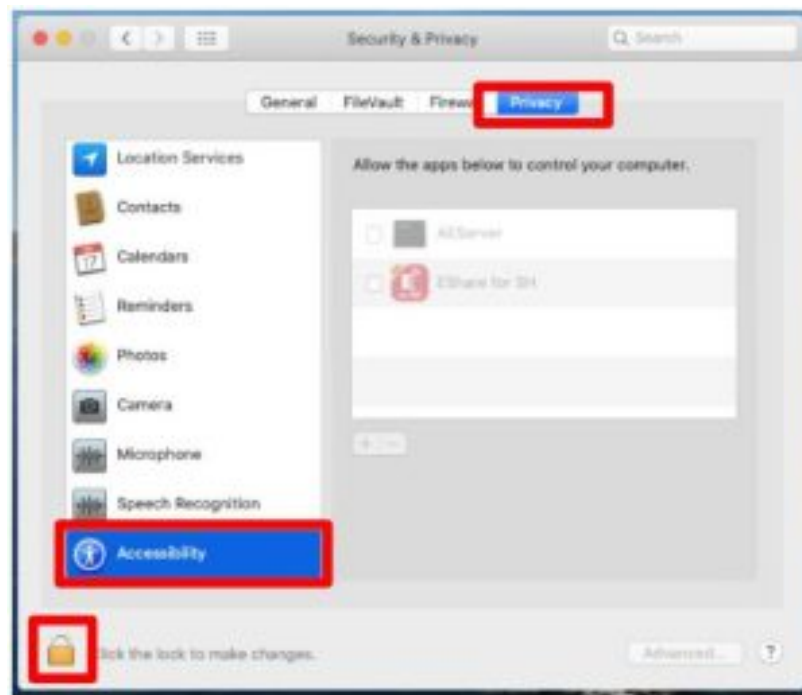
### • Touch back

To enable the function of receiving touches to the BIG PAD as touches to the device while the device is transmitting the screen, you need to change the setting.

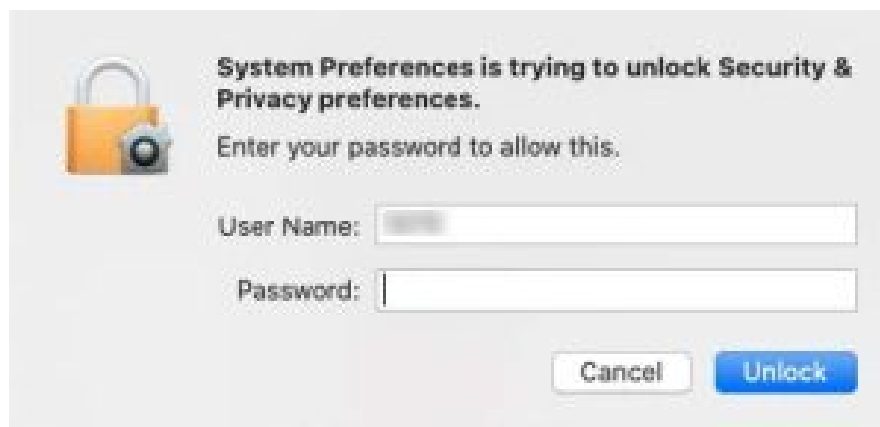
1. Click “System Preferences” .
2. Select “Security & Privacy”.



3. Select “Privacy”,  
Select “Accessibility”,  
Click on the lock icon in the lower left corner.



4. Input the user name and the password.



5. Click "ESharefor SH" check box.



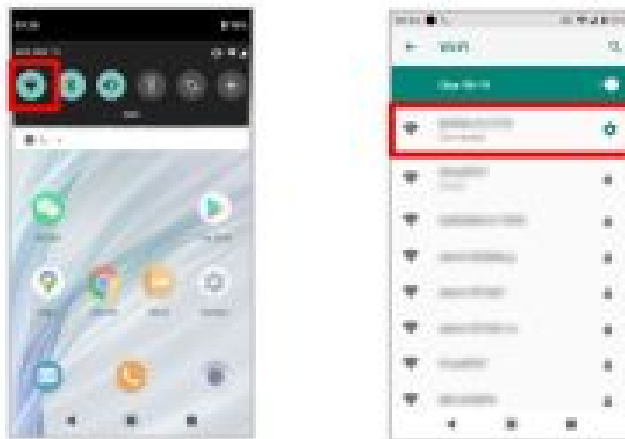
## Preparation (Android/iOS,iPadOS)

### Android device

- **Configure the wireless LAN connection settings of the device**

(The following screens are on Android 9)

Press and hold  to open Wi-Fi setting screen



Connect to an access point on the same network as the BIG PAD

- **Install “ESharefor SH”. (First time only)**

1. On the BIG PAD, select “Apps” on home screen in APPLICATION mode.



2. Select “EShareServer”.



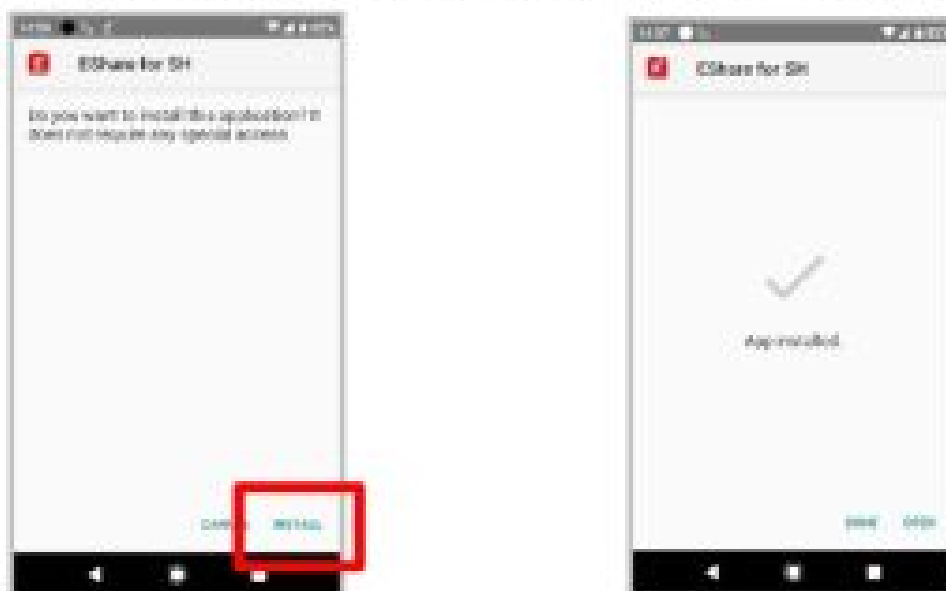
3 . Access the address displayed on the screen of the BIG PAD from your device.



4 . Select “EShare for Android” on the android device.



5. Download and install the app.



#### iOS/iPadOS device

To wirelessly connect the iOS/iPadOS device to the BIG PAD, you will need to connect to the internet for the first time.

- Configure the wireless LAN connection settings of the device

(The following screens are on iOS/iPadOS 14)

Press and hold  to open Wi-Fi setting screen



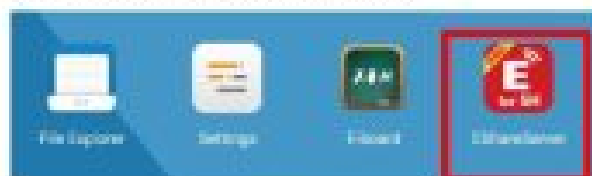
Connect to an access point on the same network as the BIG PAD

- Install “ESharefor SH”. (First time only)

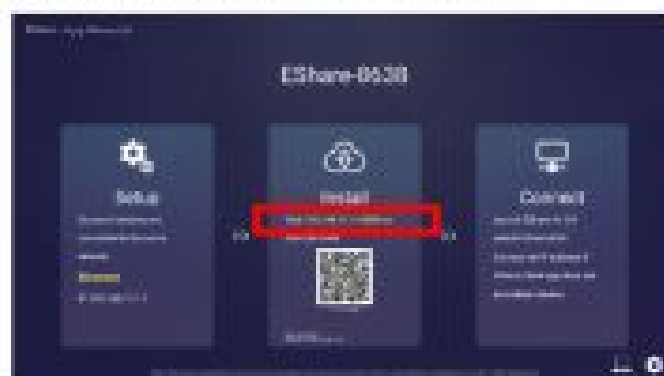
1. On the BIG PAD, select “Apps” on home screen in APPLICATION mode.



2. Select “EShareServer”.



3. Access the address displayed on the screen of the BIG PAD from your device.



4 . Select “EShare for iOS” on the iOS/iPadOS device (connect to an external site).



5. Download and install the app.



## Wireless Connection (Windows)

### Windows PC

- Operate “ESharefor SH” on the Windows PC

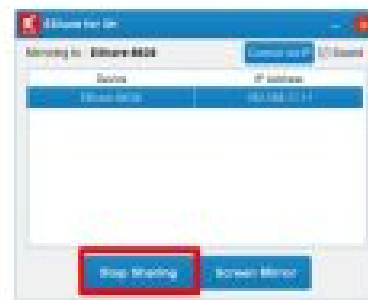
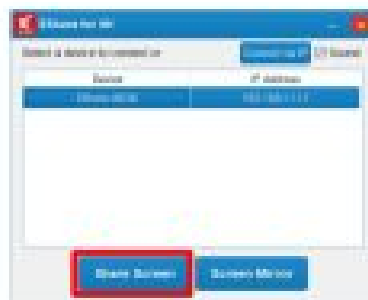
1. Click "Eshare for SH" 



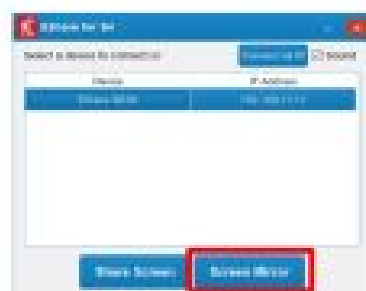
2. Select the BIG PAD you want to send and receive screen from the device list.



3. To display the screen of your PC on the BIG PAD, select "Share Screen".  
Select "Stop Sharing" to stop screen sharing.



4. To display the BIG PAD screen on your PC, select "Screen Mirror".



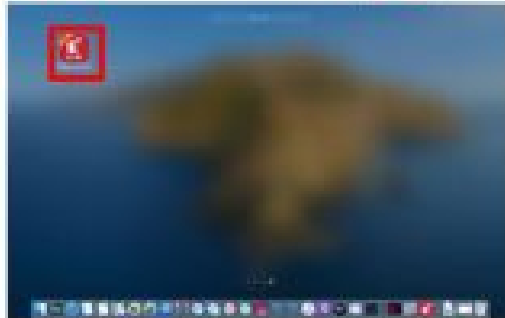
The BIG PAD screen will appear on your PC.

Click the “x” in the upper right corner of the windows to stop screen mirroring.

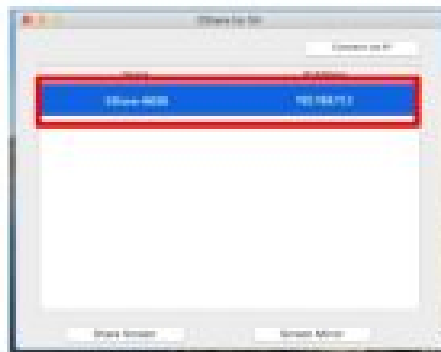
## Wireless Connection (macOS)

- Operate “ESharefor SH” on the macOS PC

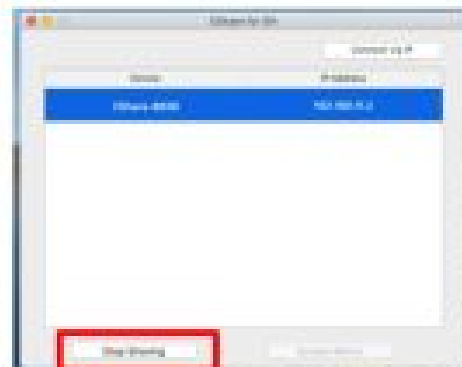
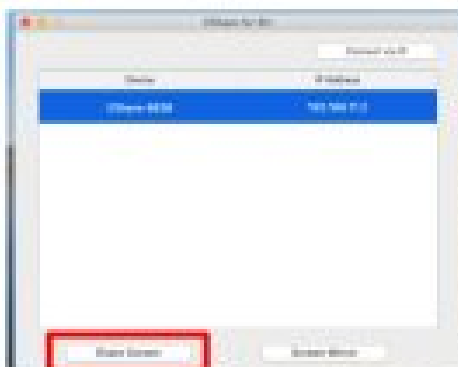
1. Click “Eshare for SH”



2. Select the BIG PAD you want to send and receive screen from the device list.

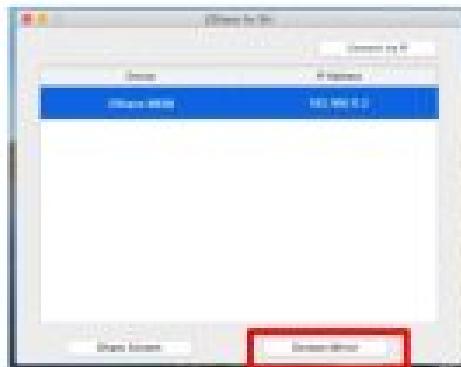


3. To display the screen of your PC on the BIG PAD, select “Share Screen”.  
Select “Stop Sharing” to stop screen sharing.





4 .To display the BIG PAD screen on your PC, select "Screen Mirror".



The BIG PAD screen will appear on your PC.

Click the red "●" in the upper left corner of the EShare window to stop screen mirroring.

- When the following message is displayed, please refer to page 4 to enable touchback.

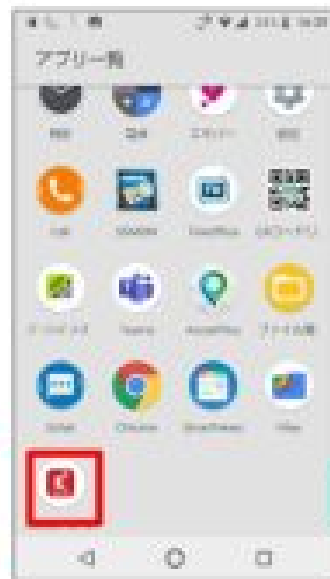
If you do not want to use touch back, you do not need to enable it.



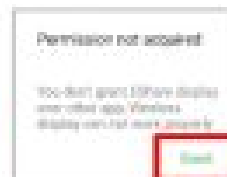
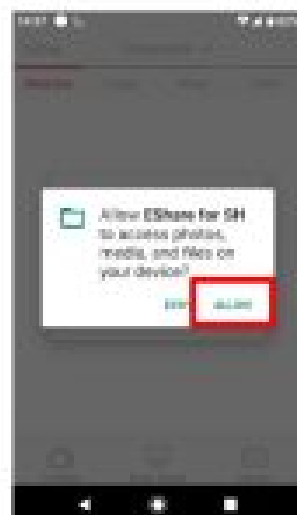
## Wireless Connection (Android)

### Android device

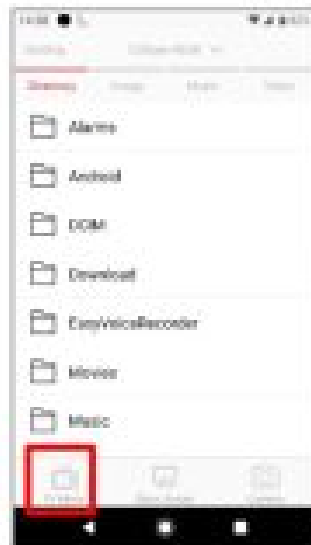
1. Open Application list, tap “EShare for SH”



2. If a message appears asking for permission, follow the on-screen instructions to allow it.



3. To display the screen of your device on the BIG PAD, select "TV Mirror".

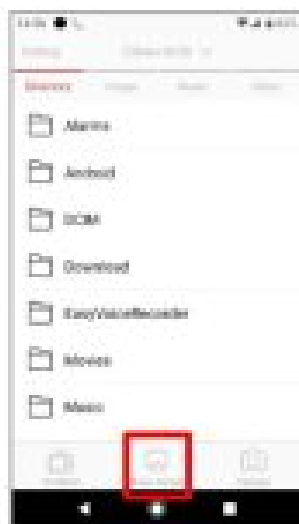


[received image]



Click the "x" in the upper left corner to stop mirroring.

4. To display the BIG PAD screen on your device, select "Share Screen".



To stop screen sharing, slide the top of your Android device down to show the notification list, and select Share Screen(toggle switch).

5. If you want to use the wireless camera/microphone function, select "Camera".

↓ quit camera function



microphone ON/OFF

mobile light ON/OFF

switch between  
in/out camera

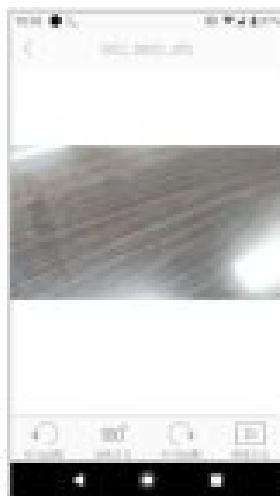
shutter button

Press the shutter button to take a still image, which will remain on the BIG PAD screen. The captured still image will be saved as an image file on the device.

6. If you want to use the file sharing function, select the file you want to share from within the screen.



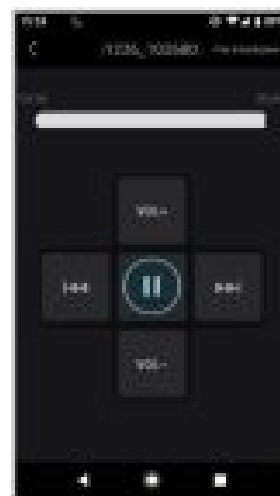
The remote control will appear on the screen during file sharing.



Image



Music



Video

## Wireless Connection (iOS/iPadOS)

iOS/iPadOSdevice

1. Tap "EShare fo SH".



2. Select the BIG PAD you want to send and receive screen from the device list.



3. To display the screen of your device on the BIG PAD, select "Share Screen".



4. Select "Start Broadcast" to start sending after 3 counts. Press the home button to switch the application and display the content you want to send.

If there is a red line at the top of the screen, EShare is running.



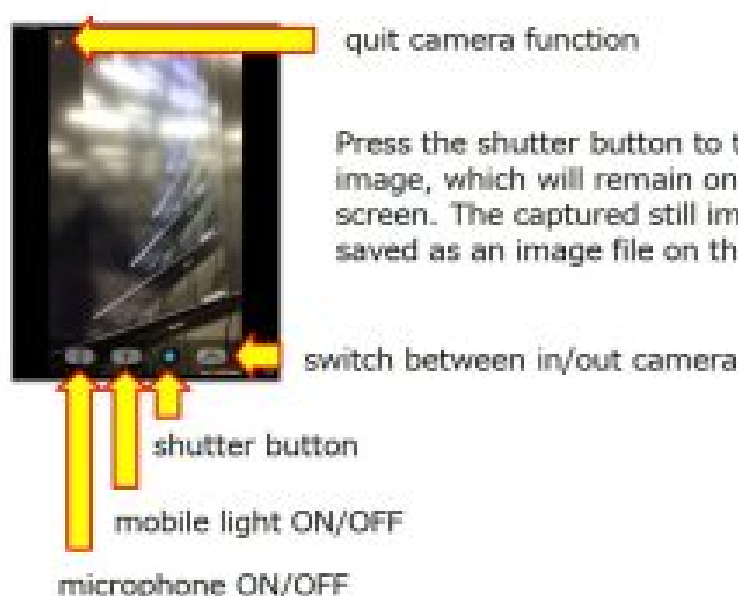
To stop the screen transmission, select the red line on the screen and select "OK" to stop the screen broadcast.

5. To display the BIG PAD screen on your device, select "TV Mirror".



Click the "x" in the upper left corner to stop screen mirroring.

6. If you want to use the wireless camera/microphone function, select "Camera".



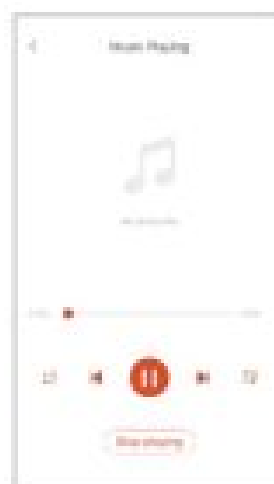
7. If you want to use the file sharing function, select “Photo” or “Music/Video”.



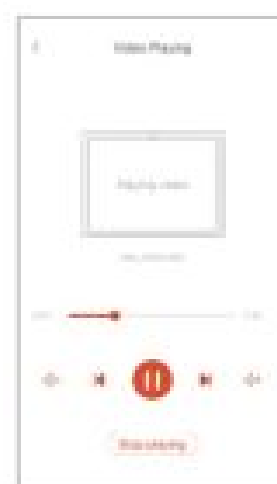
The remote control will appear on the screen during file sharing.



Photo



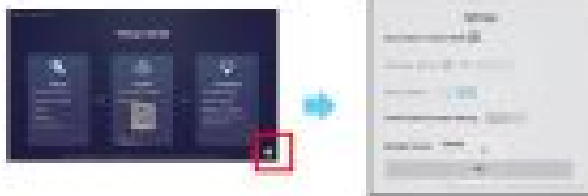
Music



Video

#### Wireless Connection (Other functions)

## ■ Change the settings of EShareServer



On the BIG PAD, touch  in the lower right corner of the EShareServer screen to display the setting screen.

### ☐ Change the device name of BIG PAD

Touch "Device Name"  to change the device name of the BIG PAD.

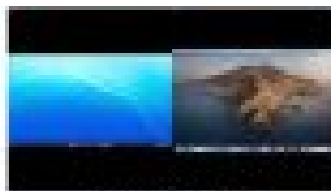
### ☐ Setting screen sharing permission confirmation

If you turn on "Share permission confirmation", when you send a screen from your device, a confirmation message will be displayed on the BIG PAD side, and the screen will be shared only if permission is allowed.

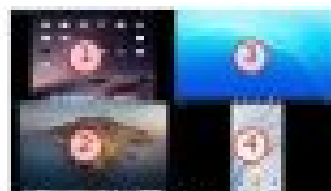


### ☐ Setting the display method for wireless connection of multiple devices (multi-screen)

When "Multi-Screen" is set to 2 or 4 Screens, the screen will be automatically divided and multiple receiving screens will be displayed simultaneously when screen transmissions are received from multiple devices up to the set number.



ex. 2 Screens







ex. 4 Screens




When you send the 5th screen, it will be as above.

When you touch the screen being displayed on the BIG PAD, the operation buttons will appear as shown below.

	Turns the audio on and off. In multi-screen display, when one of the screens is turned on, the remaining screens are automatically turned off.
	Switches between enabling and disabling touchback to the device. (Windows / macOS only)
	In multi-screen mode, temporarily switches the selected screen to full-screen mode.
	Disconnects screen sharing for the selected device.

## ■ Setting to display the same device's screen on multiple BIG PADs simultaneously (Display Group)



- Touch the bottom right corner of the EShareServer screen on the BIG PAD side  to display the setting screen.
- When you turn on the display group, the BIG PADs on the same network will be displayed in the list, touch OK, you can set the group setting with the checked device as the "Client" and the device that you set as the "Host".
- When you touch OK, you can set up a group with the checked device as the "Client" and the device that you set up as the "Host". For example, if you set up a group for each of two BIG PADs with the other as the Client device, when you send an image to one of the BIG PADs, the image will be displayed on the other BIG PAD.
- Multi-screen transmission is not possible for display groups.
- Audio can be played only from the Host. Touchback is also possible only on the Host.
- There is no limit to the number of groups that can be set, but actual operation depends on the network environment.

## Wireless Connection (appendix)

### ■ Supported OS version of EShare

- The supported versions of each OS are displayed on the ESharedownload page, but please use the version

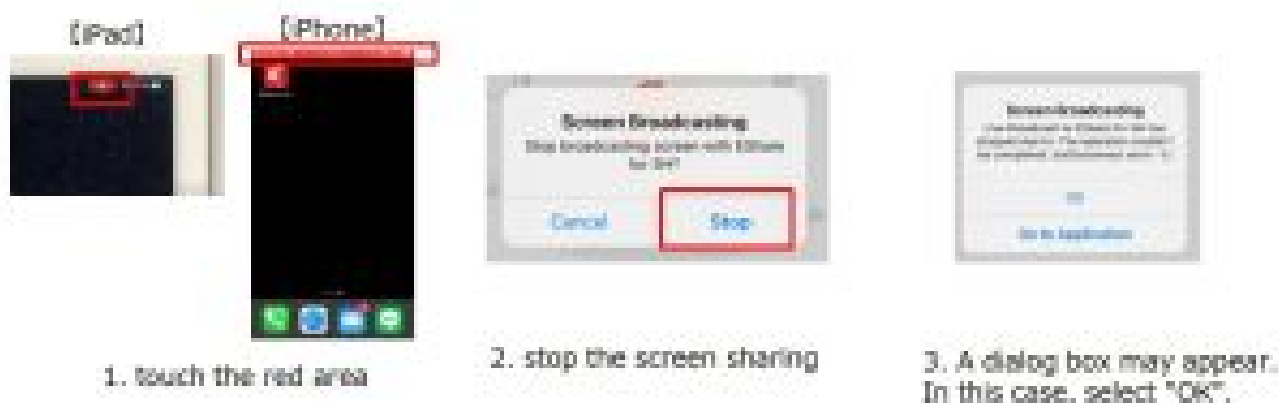


listed on p.1. The download page will be updated in the future update.

- Since the wireless sharing function for the Chrome OS will change in the near future, SHARP cannot guarantee that the communication between the Chrome OS client app and the ESharehost app of the BIG PAD will always work.
- Due to frequent updates in the supported client operating systems, SHARP cannot always guarantee a fully functional wireless sharing capability.

## ■ Notes on iOS/iPadOS

When using ESharefor SH on an iOS/iPadOSdevice, the following dialog (error-1) may appear when screen sharing is stopped, but this indicates that screen sharing has been stopped and there is no problem.



The warning message displayed when starting screen sharing on iOS/iPadOSdevices is difficult to read.The contents are as follows.



- If the screen goes off (sleep) during screen sharing on iOS/iPadOSdevices, the screen sharing will also be terminated. If you don't want it to end automatically, please set the auto-lock to "None" or set a longer time.

## ■ Network requirement of EShare

- Please ensure that EShareServerand EShareClient are in the same subnet as each other.  
TCP Ports: 56789, 25123, 8121 & 8000  
UDP Ports: 48689, 25123  
DNS: h1.ee-share.com
- Please enable Wi-Fi router broadcast function.
- To get a really reliable, robust user experience, it is strongly recommended to connect using 5GHZ Wi-Fi band.

Notes on the documents

Microsoft and Windows are registered trademarks or trademarks of Microsoft Corporation in the United States and other countries.

Android is a trademark of Google LLC.


Chrome OS is a trademark or registered trademarks of Google LLC.

Microsoft and Windows are either registered trademarks or trademarks of Microsoft Corporation in the United States and/or other countries.



Read More About This Manual & Download PDF:

Documents / Resources

	<p><a href="#">SHARP PN-65HC1 LCD Monitor</a> [pdf] User Guide PN-65HC1, PN-75HC1, PN-86HC1, PN-70HC1E, LCD Monitor</p>
--	---

References

- [h1.ee-share.com](http://h1.ee-share.com)