



# PIL1044 Universal Sharp TV Remote Control Instructions

[Home](#) » [Sharp](#) » PIL1044 Universal Sharp TV Remote Control Instructions 

## Contents

- [1 PIL1044 Universal Sharp TV Remote](#)
- [2 UNIVERSAL SHARP TV REMOTE CONTROL](#)
  - [2.1 INPUT CODE](#)
  - [2.2 CODE INQUIRY](#)
- [3 LEARNING FUNCTION](#)
  - [3.1 ONE-BUTTON LEARN FUNCTION](#)
- [4 Documents / Resources](#)
- [5 Related Posts](#)

# Universal Sharp

**PIL1044 Universal Sharp TV Remote**

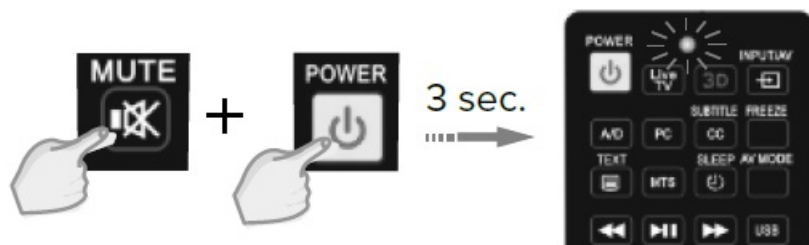


## UNIVERSAL SHARP TV REMOTE CONTROL

Please install the batteries and try it first. PIL1044 remote control can directly control most models of Sharp TVs. If it works the first time, there is no need to set. If it does not work, please refer to the following settings methods.

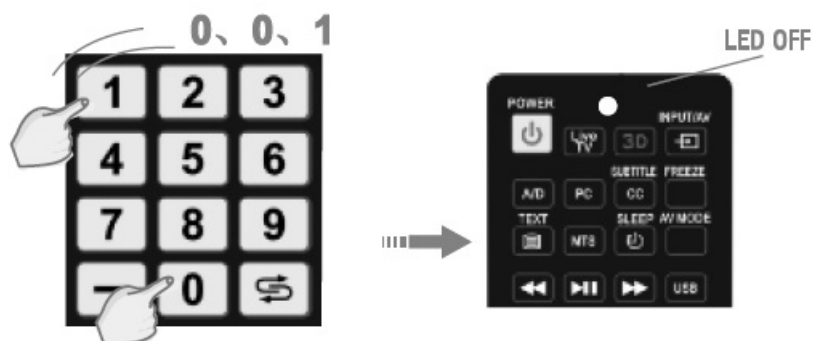
### INPUT CODE

1. Press and hold the MUTE and POWER buttons for 3 seconds, until the LED indicator starts to flash. Release the buttons.



2. Enter the 3 digit code. If the code is right, the LED indicator will go off. If the code is wrong, the LED indicator will still be on. If this happens, try to enter the code again.

**CODE LIST: 001, 002, 003, 004, 005, 006, 007, 008, 009, 010, 011, 012, 013, 014, 015, 016, 017, 018, 019, 020, 021, 022, 023, 024**

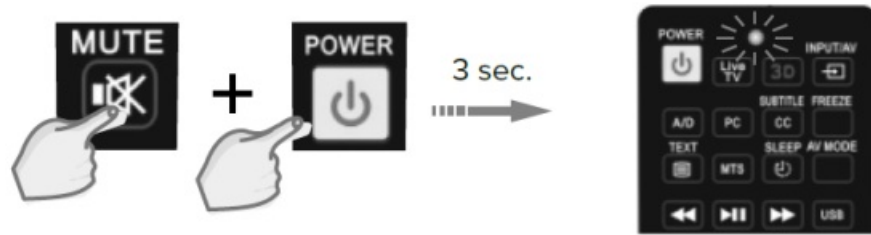


3. If the remote still doesn't work, please try another code from the list.

**Note:** If you want to exit the pairing mode, press the MUTE button.

## CODE INQUIRY

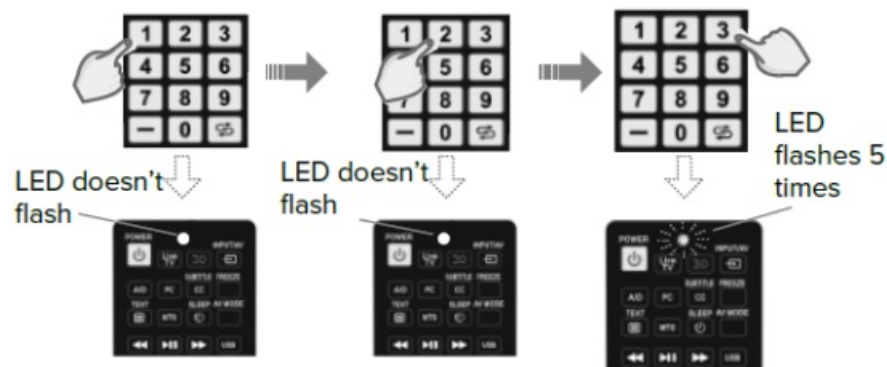
1. Press and hold the MUTE button, then press the POWER button. After about 3 seconds, the LED indicator will light up. Release the buttons.



2. Input the numbers: 9, 9, 0. LED indicator will flash two times and then go off.



3. Input the numbers: 1, 2, 3. After pressing the 1 button, LED indicator starts to flash. The number of flashes is the code's first number. If the code number is 0, LED indicator will not flash.

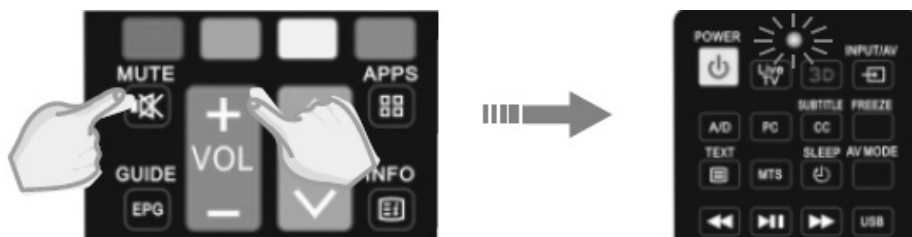


**Example: Previous remote control code: 005**

## LEARNING FUNCTION

It is suitable for IR remote controls, not for Bluetooth or wireless remote controls.

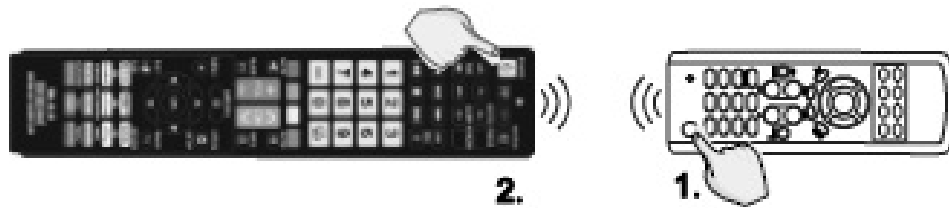
1. Press and hold the MUTE and VOL+ buttons for about 5 seconds. Release the buttons when the LED indicator lights up.



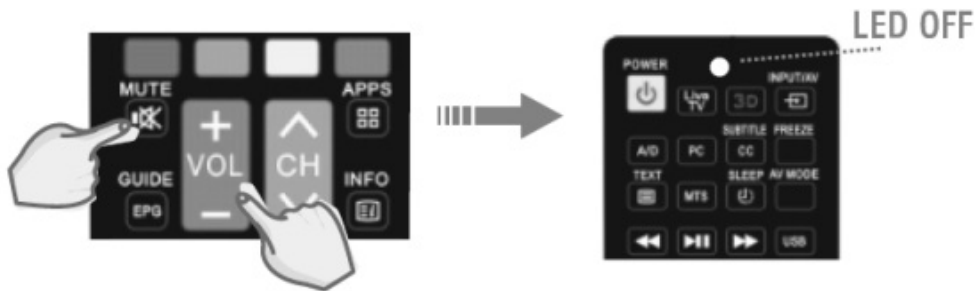
2. Point the original remote control to the PIL1044 remote. The distance between them should be within 1-3 cm.



- Press any button on the original remote control. When LED indicator flashes on the PIL1044 remote control after receiving the information, release the button. Then press the button on the PIL1044 remote control. LED indicator flashes two times and then keeps the light on. Repeat the above steps to continue learning other buttons.



- After learning the buttons press and hold the MUTE button, then press the VOL- button. The LED indicator will go off. The learning will be saved.



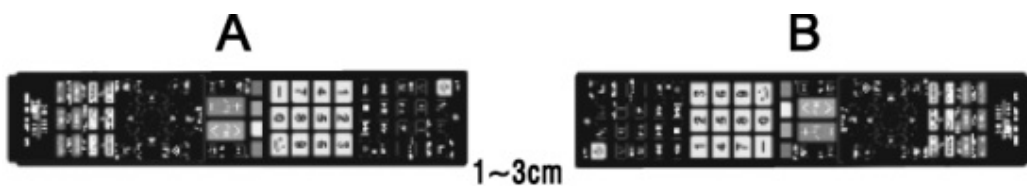
**Note:** during the learning process if no button is pressed within 25 seconds, the learning will finish without saving.

#### ONE-BUTTON LEARN FUNCTION

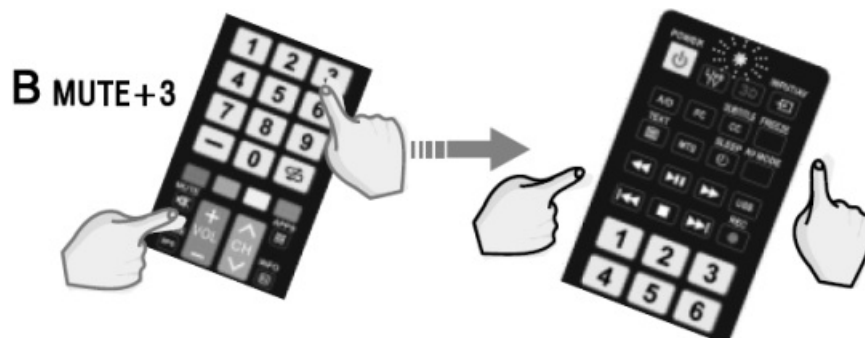
**Note:** A and B are identical learning remotes.

- A:** the remote control has been fully learned.
- B:** the remote control that has to be learned.

- Align the head of the remote control A with the head of remote control B at a distance of 1-3 cm and do not shake.

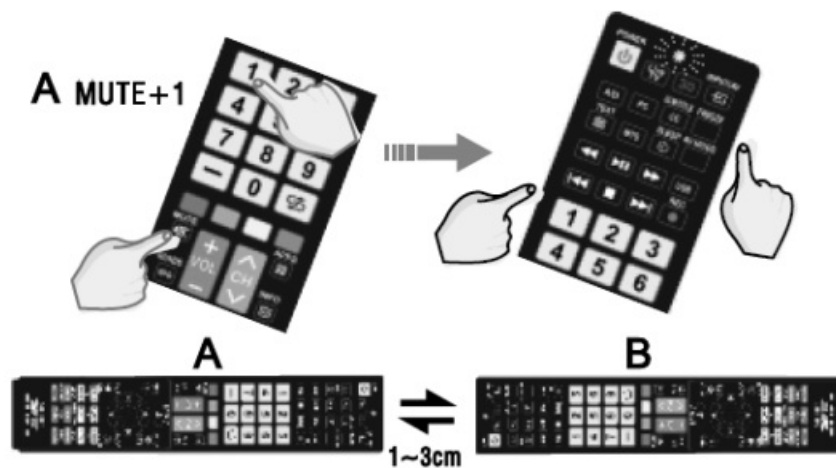


- B remote control: Press and hold the MUTE and 3 buttons for more than 3 seconds. When the LED indicator lights up, release the buttons. The remote is ready for learning.



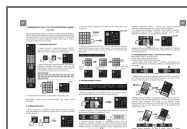
- A remote control: Press and hold the MUTE and 1 buttons for more than 3 seconds. When the LED indicator lights up, release the buttons. When the LED on both remote control flash, the learning function is on. When the LED indicator on both remote controls flashes three times slowly then goes off, it means that learning has

finished.



**Note:** Check if B remote control works. If not, please repeat steps 1-3. Press the MUTE and VOL- buttons to exit.

## Documents / Resources



[SHARP PIL1044 Universal Sharp TV Remote Control](#) [pdf] Instructions  
PIL1044, Universal Sharp TV Remote Control, PIL1044 Universal Sharp TV Remote Control, S  
harp TV Remote Control, Remote Control