

SHARP
MX-B468F Printer
Copier Scanner



SHARP MX-B468F Printer Copier Scanner User Guide

[Home](#) » [Sharp](#) » SHARP MX-B468F Printer Copier Scanner User Guide 

Contents

- 1 SHARP MX-B468F Printer Copier Scanner
- 2 Product Information
- 3 Product Usage Instructions
- 4 Copy
- 5 E-mail
- 6 Scan
- 7 Fax
- 8 Print
- 9 Maintain the printer
- 10 Clearing jams
- 11 Documents / Resources
 - 11.1 References
- 12 Related Posts

SHARP

SHARP MX-B468F Printer Copier Scanner



Product Information

Specifications:

- **Product Name:** All-in-One Printer
- **Functionality:** Copy, Email
- **Supported Paper Sizes:** Various
- **Connectivity:** Network Connection

Product Usage Instructions

Copying Documents:

1. Load the original document into the ADF tray or scanner glass.
2. Touch 'Copy' on the home screen and specify the number of copies.
3. Adjust copy settings if needed.
4. Copy the document.

Copying on Both Sides of the Paper:

1. Load the original document.
2. Go to Copy > Settings > Sides on the home screen.
3. Select 1-sided to 2-sided or 2-sided to 2-sided.
4. Copy the document.

Copying Multiple Pages onto a Single Sheet:

1. Load the original document.
2. Access Copy > Settings > Pages per Side from the home screen.
3. Enable the setting and select the number per side and page orientation.
4. Copy the document.

Email Configuration:

To configure email SMTP settings for sending scanned documents:

1. Access the Embedded Web Server or Settings menu on the printer.
2. Enter SMTP settings based on your email service provider's requirements.

Frequently Asked Questions (FAQ)

- **Q: How do I configure email SMTP settings?**

A: To configure email SMTP settings, access the Embedded Web Server or Settings menu on the printer and enter the required information based on your email service provider's specifications.

- **Q: Can I copy documents on both sides of the paper?**

A: Yes, you can copy documents on both sides of the paper by selecting the appropriate setting in the Copy menu on the printer.

Copy

Making copies

1. Load an original document into the ADF tray or on the scanner glass.
Note: To avoid a cropped image, make sure that the original document and output have the same paper size.
2. From the home screen, touch Copy, and then specify the number of copies. If necessary, adjust the copy settings.
3. Copy the document.

Note: To make a quick copy, from the home screen, touch .

Copying on both sides of the paper

1. Load an original document into the ADF tray or on the scanner glass.
2. From the home screen, touch Copy > Settings > Sides.
3. Touch 1-sided to 2-sided or 2-sided to 2-sided.
4. Copy the document.

Copying multiple pages onto a single sheet

1. Load an original document into the ADF tray or on the scanner glass.
2. From the home screen, touch Copy > Settings > Pages per Side.

3. Enable the setting, and then select the number per side and page orientation.
4. Copy the document.

E-mail

Configuring the e-mail SMTP settings

- Configure the Simple Mail Transfer Protocol (SMTP) settings to send a scanned document through e-mail. The settings vary with each e-mail service provider.
- Before you begin, make sure that the printer is connected to a network and that the network is connected to the Internet.

Using the Embedded Web Server

1. Open a web browser, and then type the printer IP address in the address field.

Notes:

- View the printer IP address on the printer home screen. The IP address appears as four sets of numbers separated by periods, such as 123.123.123.123.
- If you are using a proxy server, then temporarily disable it to load the web page correctly.

2. Click Settings > E-mail.

3. From the E-mail Setup section, configure the settings.

Notes:

- For more information on the password, see the list of e-mail service providers.
- For e-mail service providers that are not on the list, contact your provider and ask for the settings.

4. Click Save.

Using the Settings menu in the printer

- From the home screen, touch Settings > E-mail > E-mail Setup.
- Configure the settings.

Notes:

- For more information on the password, see the list of e-mail service providers.
- For e-mail service providers that are not on the list, contact your provider and ask for the settings.

E-mail service providers

- AOL Mail
- Comcast Mail
- Gmail
- iCloud Mail
- Mail.com
- NetEase Mail (mail.126.com)

- NetEase Mail (mail.163.com)
- NetEase Mail (mail.yeah.net)
- Outlook Live or Microsoft 365
- QQ Mail
- Sina Mail
- Sohu Mail
- Yahoo! Mail
- Zoho Mail

Notes:

- If you encounter errors using the settings provided, then contact your e-mail service provider.
- For e-mail service providers that are not on the list, contact your provider.

AOL Mail

Setting	Value
Primary SMTP Gateway	smtp.aol.com
Primary SMTP Gateway Port	587
Use SSL/TLS	Required
Require Trusted Certificate	Disabled
Reply Address	Your e-mail address
SMTP Server Authentication	Login / Plain
Device-Initiated E-mail	Use Device SMTP Credentials
Device UserID	Your e-mail address
Device Password	App password Note: To create an app password, go to the AOL Account Security page, log in to your account, and then click Generate app password .

Comcast Mail

Setting	Value
Primary SMTP Gateway	smtp.comcast.net
Primary SMTP Gateway Port	587
Use SSL/TLS	Required
Require Trusted Certificate	Disabled
Reply Address	Your e-mail address
SMTP Server Authentication	Login / Plain
Device-Initiated E-mail	Use Device SMTP Credentials
Device UserID	Your e-mail address
Device Password	Account Password

Note:

Make sure that the Third Party Access Security setting is enabled on your account. For more information, go to the [Comcast Xfinity Connect help page](#).

Gmail™

Note:

Make sure that two-step verification is enabled on your Google account. To enable two-step verification, go to the Google Account Security page, log in to your account, and then from the “Signing in to Google” section, click 2-Step Verification.

Setting	Value
Primary SMTP Gateway	smtp.gmail.com
Primary SMTP Gateway Port	587
Use SSL/TLS	Required
Require Trusted Certificate	Disabled
Reply Address	Your e-mail address
SMTP Server Authentication	Login / Plain
Device-Initiated E-mail	Use Device SMTP Credentials
Device UserID	Your e-mail address

Device Password	<p>App password</p> <p>Notes:</p> <ul style="list-style-type: none"> To create an app password, go to the Google Account Security page, log in to your account, and then from the “Signing in to Google” section, click App passwords. “App passwords” show only if two-step verification is enabled.
-----------------	---

iCloud Mail

Note:

Make sure that two-step verification is enabled on your account.

Setting	Value
Primary SMTP Gateway	smtp.mail.me.com
Primary SMTP Gateway Port	587
Use SSL/TLS	Required
Require Trusted Certificate	Disabled
Reply Address	Your e-mail address
SMTP Server Authentication	Login / Plain
Device-Initiated E-mail	Use Device SMTP Credentials
Device UserID	Your e-mail address
Device Password	App password Note: To create an app password, go to the iCloud Account Management page, log in to your account, and then from the Security section, click Generate Password .

Mail.com

Setting	Value
Primary SMTP Gateway	smtp.mail.com
Primary SMTP Gateway Port	587

Use SSL/TLS	Required
Require Trusted Certificate	Disabled
Reply Address	Your e-mail address
SMTP Server Authentication	Login / Plain
Device-Initiated E-mail	Use Device SMTP Credentials
Device UserID	Your e-mail address
Device Password	Account password

NetEase Mail (mail.126.com)

Note:

Make sure that the SMTP service is enabled on your account. To enable the service, from the NetEase Mail home page, click Settings > POP3/SMTP/IMAP, and then enable either IMAP/SMTP service or POP3/SMTP service.

Setting	Value
Primary SMTP Gateway	smtp.126.com
Primary SMTP Gateway Port	465
Use SSL/TLS	Required
Require Trusted Certificate	Disabled
Reply Address	Your e-mail address
SMTP Server Authentication	Login / Plain
Device-Initiated E-mail	Use Device SMTP Credentials
Device UserID	Your e-mail address
Device Password	Authorization password Note: The authorization password is provided when IMA P/SMTP service or POP3/SMTP service is enabled.

NetEase Mail (mail.163.com)

Note:

Make sure that the SMTP service is enabled on your account. To enable the service, from the NetEase Mail home page, click Settings > POP3/SMTP/IMAP, and then enable either IMAP/SMTP service or POP3/SMTP service.

Setting	Value
Primary SMTP Gateway	smtp.163.com
Primary SMTP Gateway Port	465
Use SSL/TLS	Required
Require Trusted Certificate	Disabled
Reply Address	Your e-mail address
SMTP Server Authentication	Login / Plain
Device-Initiated E-mail	Use Device SMTP Credentials
Device UserID	Your e-mail address
Device Password	Authorization password Note: The authorization password is provided when IMA P/SMTP service or POP3/SMTP service is enabled.

NetEase Mail (mail.yeah.net)

Note:

Make sure that the SMTP service is enabled on your account. To enable the service, from the NetEase Mail home page, click Settings > POP3/SMTP/IMAP, and then enable either IMAP/SMTP service or POP3/SMTP service.

Setting	Value
Primary SMTP Gateway	smtp.yeah.net
Primary SMTP Gateway Port	465
Use SSL/TLS	Required
Require Trusted Certificate	Disabled
Reply Address	Your e-mail address
SMTP Server Authentication	Login / Plain
Device-Initiated E-mail	Use Device SMTP Credentials
Device UserID	Your e-mail address

Device Password	<p>Authorization password</p> <p>Note: The authorization password is provided when IMA P/SMTP service or POP3/SMTP service is enabled.</p>
-----------------	---

Outlook Live or Microsoft 365

These settings apply to outlook.com and [hotmail.com](https://www.hotmail.com) e-mail domains, and Microsoft 365 accounts.

Setting	Value
Primary SMTP Gateway	smtp.office365.com
Primary SMTP Gateway Port	587
Use SSL/TLS	Required
Require Trusted Certificate	Disabled
Reply Address	Your e-mail address
SMTP Server Authentication	Login / Plain
Device-Initiated E-mail	Use Device SMTP Credentials
Device UserID	Your e-mail address
Device Password	<p>Account password or app password</p> <p>Notes:</p> <ul style="list-style-type: none"> For accounts with two-step verification disabled, use your account password. For outlook.com or hotmail.com accounts with two-step verification enabled, use an app password. To create an app password, go to the Outlook Live Account Management page, and then log in to your account.

Note:

For additional setup options for businesses using Microsoft 365, go to the [Microsoft 365 help page](#).

QQ Mail

Note: Make sure that the SMTP service is enabled on your account. To enable the service, from the QQ Mail home page, click Settings > Account. From the POP3/IMAP/SMTP/Exchange/CardDAV/CalDAV Service section, enable either POP3/SMTP service or IMAP/SMTP service.

Setting	Value
Primary SMTP Gateway	smtp.qq.com
Primary SMTP Gateway Port	587
Use SSL/TLS	Required
Require Trusted Certificate	Disabled
Reply Address	Your e-mail address
SMTP Server Authentication	Login / Plain
Device-Initiated E-mail	Use Device SMTP Credentials
Device UserID	Your e-mail address
Device Password	Authorization code Note: To generate an authorization code, from the QQ Mail home page, click Settings > Account , and then from the POP3/IMAP/SMTP/Exchange/CardDAV/CalDAV Service section, click Generate authorization code .

Sina Mail

Note:

Make sure that the POP3/SMTP service is enabled on your account. To enable the service, from the Sina Mail home page, click Settings > More settings > User-end POP/IMAP/SMTP, and then enable POP3/SMTP service.

Setting	Value
Primary SMTP Gateway	smtp.sina.com
Primary SMTP Gateway Port	587
Use SSL/TLS	Required

Require Trusted Certificate	Disabled
Reply Address	Your e-mail address
SMTP Server Authentication	Login / Plain
Device-Initiated E-mail	Use Device SMTP Credentials
Device UserID	Your e-mail address
Device Password	<p>Authorization code</p> <p>Note: To create an authorization code, from the e-mail home page, click Settings > More settings > User-end POP/IMAP/SMTP, and then enable the Authorization code status.</p>

Sohu Mail

Note:

Make sure that the SMTP service is enabled on your account. To enable the service, from the Sohu Mail home page, click Options > Settings > POP3/SMTP/IMAP, and then enable either IMAP/SMTP service or POP3/SMTP service.

Setting	Value
Primary SMTP Gateway	smtp.sohu.com
Primary SMTP Gateway Port	465
Use SSL/TLS	Required
Require Trusted Certificate	Disabled
Reply Address	Your e-mail address
SMTP Server Authentication	Login / Plain
Device-Initiated E-mail	Use Device SMTP Credentials
Device UserID	Your e-mail address
Device Password	<p>Independent password</p> <p>Note: The independent password is provided when IMAP /SMTP service or POP3/SMTP service is enabled.</p>

Yahoo! Mail

Setting	Value
Primary SMTP Gateway	smtp.mail.yahoo.com
Primary SMTP Gateway Port	587
Use SSL/TLS	Required
Require Trusted Certificate	Disabled
Reply Address	Your e-mail address
SMTP Server Authentication	Login / Plain
Device-Initiated E-mail	Use Device SMTP Credentials
Device UserID	Your e-mail address
Device Password	<p>App password</p> <p>Note: To create an app password, go to the Yahoo Account Security page, log in to your account, and then click Generate app password.</p>

Zoho Mail

Setting	Value
Primary SMTP Gateway	smtp.zoho.com
Primary SMTP Gateway Port	587
Use SSL/TLS	Required
Require Trusted Certificate	Disabled
Reply Address	Your e-mail address
SMTP Server Authentication	Login / Plain
Device-Initiated E-mail	Use Device SMTP Credentials
Device UserID	Your e-mail address

Device Password	<p>Account password or app password</p> <p>Notes:</p> <ul style="list-style-type: none"> • For accounts with two-step verification disabled, use your account password. • For accounts with two-step verification enabled, use an app password. To create an app password, go to the Zoho Mail Account Security page, log in to your account, and then from the Application-Specific Passwords section, click Generate New Password.
------------------------	--

Sending an e-mail

Before you begin, make sure that the SMTP settings are configured. For more information, see “Configuring the e-mail SMTP settings”.

1. Load an original document into the ADF tray or on the scanner glass.
2. From the home screen, touch E-mail, and then enter the needed information.
3. If necessary, configure the scan settings.
4. Send the e-mail.

Scan

Scanning to a computer

Before you begin, make sure that the computer and the printer are connected to the same network.

For Windows users

Note:

Make sure that the printer is added to the computer. For more information, see “Adding printers to a computer”.

1. Load an original document into the automatic document feeder or on the scanner glass.
2. From the computer, open Windows Fax and Scan.
3. Click New Scan, and then select a scanner source.
4. If necessary, change the scan settings.
5. Scan the document.
6. Click Save as, type a file name, and then click Save.

For Macintosh users

Note: Make sure that the printer is added to the computer. For more information, see “Adding printers to a computer” on page 11.

1. Load an original document into the automatic document feeder or on the scanner glass.
2. From the computer, do either of the following:

- Open Image Capture.
 - Open Printers & Scanners, and then select a printer. Click Scan > Open Scanner.
3. From the Scanner window, do one or more of the following:
- Select the location that you want to save the scanned document.
 - Select the size of the original document.
 - To scan from the ADF, select Document Feeder from the Scan Menu or enable Use Document Feeder.
 - If necessary, configure the scan settings.
4. Click Scan.

Fax

Setting up the printer to fax

Setting up the fax function using analog fax

Notes:

- Some connection methods are applicable only in some countries or regions.
- If the fax function is enabled and not fully set up, then the indicator light may blink red.
- If you do not have a TCP/IP environment, then use the control panel to set up fax.

Warning—Potential Damage:

To avoid loss of data or printer malfunction, do not touch cables or the printer in the area shown while actively sending or receiving a fax.



Using the control panel

1. From the home screen, touch Settings > Fax > Fax Setup > General Fax Settings.
2. Configure the settings.

Using the Embedded Web Server

1. Open a web browser, and then type the printer IP address in the address field.

Notes:

- View the printer IP address on the home screen. The IP address appears as four sets of numbers separated by periods, such as 123.123.123.123.
 - If you are using a proxy server, then temporarily disable it to load the web page correctly.
2. Click Settings > Fax > Fax Setup > General Fax Settings.
 3. Configure the settings.
 4. Apply the changes.

Setting up the fax function using fax server

Notes:

- This feature lets you send fax messages to a fax service provider that supports e-mail receiving.
- This feature supports outgoing fax messages only. To support fax receive, make sure that you have a device-based fax, such as analog fax or Fax over IP (FoIP), configured in your printer.

1. Open a web browser, and then type the printer IP address in the address field.

Notes:

- View the printer IP address on the home screen. The IP address appears as four sets of numbers separated by periods, such as 123.123.123.123.
 - If you are using a proxy server, then temporarily disable it to load the web page correctly.
2. Click Settings > Fax.
 3. From the Fax Mode menu, select Fax Server, and then click Save.
 4. Click Fax Server Setup.
 5. In the To Format field, type [#]@myfax.com, where [#] is the fax number and myfax.com is the fax provider domain.

Notes:

- If necessary, configure the Reply Address, Subject, or Message fields.
 - To let the printer receive fax messages, enable the device-based fax to receive set. Make sure that you have a device-based fax configured.
6. Click Save.
 7. Click Fax Server E-mail Settings, and then do either of the following:
 - Enable Use E-mail SMTP Server.

Note: If the E-mail SMTP settings are not configured, then see “Configuring the e-mail SMTP settings” on page 1.

 - Configure the SMTP settings. For more information, contact your e-mail service provider.
 8. Apply the changes.

Sending a fax

Note:

Make sure that fax is configured. For more information, see the Setting up the printer to fax section.

Using the control panel

1. Load an original document into the ADF tray or on the scanner glass.
2. From the home screen, touch Fax, and then enter the needed information. If necessary, adjust the settings.
3. Send the fax.

Using the computer

Before you begin, make sure that the fax driver is installed. For more information, see "Installing the fax driver" on page 11.

For Windows users

1. From the document that you are trying to fax, open the Print dialog.
2. Select the printer, and then click Properties, Preferences, Options, or Setup.
3. Click Fax > Enable fax > Always display settings prior to faxing, and then enter the recipient number. If necessary, configure other fax settings.
4. Send the fax.

For Macintosh users

1. With a document open, choose File > Print.
2. Select the printer that has - Fax added after its name.
3. In the To field, enter the recipient number. If necessary, configure other fax settings.
4. Send the fax.

Print

Printing from a computer

Note:

For labels, card stock, and envelopes, set the paper size and type in the printer before printing the document.

1. From the document that you are trying to print, open the Print dialog.
2. If necessary, adjust the settings.
3. Print the document.

Printing from a mobile device

Printing from a mobile device using AirPrint



The AirPrint software feature is a mobile printing solution that allows you to print directly from Apple devices to an AirPrint-certified printer.

Notes:

- Make sure that the Apple device and the printer are connected to the same network. If the network has multiple wireless hubs, then make sure that both devices are connected to the same subnet.
- This application is supported only in some Apple devices.

1. From your mobile device, select a document from your file manager or launch a compatible application.
2. Tap the share icon, and then tap Print.
3. Select a printer.
If necessary, adjust the settings.
4. Print the document.


Printing from a mobile device using Wi-Fi Direct®


Wi-Fi Direct® is a printing service that lets you print to any Wi-Fi Direct-ready printer.


Note:

Make sure that the mobile device is connected to the printer's wireless network. For more information, see "Connecting a mobile device to the printer".

1. From your mobile device, launch a compatible application or select a document from your file manager.
2. Depending on your mobile device, do one of the following:

Tap  > Print.

Tap  > Print.

Tap  > Print.

3. Select a printer, and then adjust the settings, if necessary.
4. Print the document.

Printing confidential and other held jobs**For Windows users**

1. With a document open, click File > Print.
2. Select a printer, and then click Properties, Preferences, Options, or Setup.
3. Click Print and Hold.
4. Select Use Print and Hold, and then assign a user name.
5. Select the print job type (Confidential, Repeat, Reserve, or Verify). If you select Confidential, then secure the print job with a personal identification number (PIN).
6. Click OK or Print.
7. From the printer home screen, release the print job.
 - For confidential print jobs, touch Held jobs > select your user name > Confidential > enter the PIN > select the print job > configure the settings > Print.
 - For other print jobs, touch Held jobs > select your user name > select the print job > configure the settings > Print.

For Macintosh users

Using AirPrint

- With a document open, choose File > Print.
- Select a printer, and then from the drop-down menu following the Orientation menu, choose PIN Printing.
- Enable Print with PIN, and then enter a four-digit PIN.
- Click Print.
- From the printer home screen, release the print job. Touch Held jobs > select your computer name > Confidential > enter the PIN > select the print job > Print.

Using the print driver

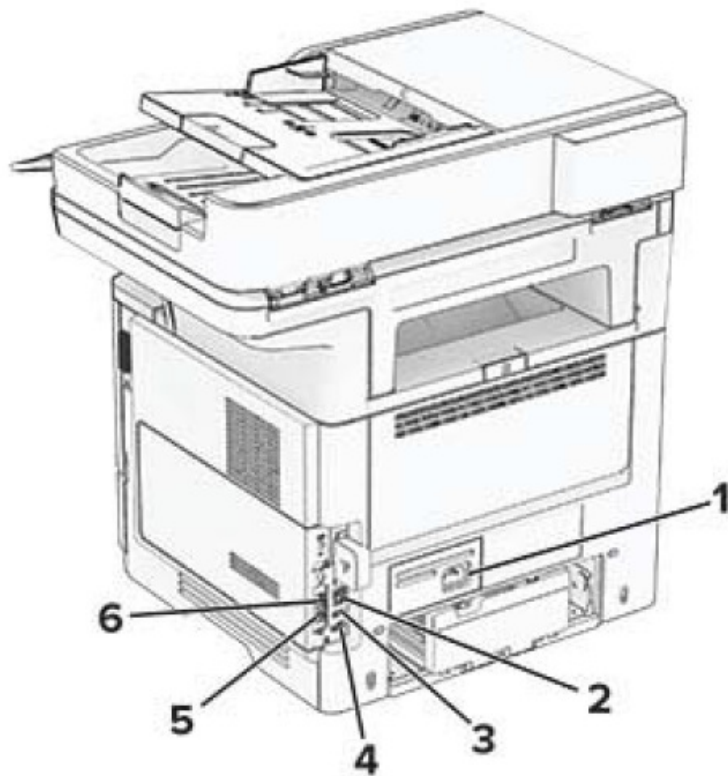
1. With a document open, choose File > Print.
2. Select a printer, and then from the drop-down menu following the Orientation menu, choose Print and Hold.
3. Choose Confidential Print, and then enter a four-digit PIN.
4. Click Print.
5. From the printer home screen, release the print job. Touch Held jobs > select your computer name > Confidential > select the print job > enter the PIN > Print.

Maintain the printer

Attaching cables

- CAUTION—SHOCK HAZARD: To avoid the risk of electrical shock, do not set up this product or make any electrical or cabling connections, such as the power cord, fax feature, or telephone, during a lightning storm.
- CAUTION—POTENTIAL INJURY: To avoid the risk of fire or electrical shock, connect the power cord to an appropriately rated and properly grounded electrical outlet that is near the product and easily accessible.
- CAUTION—POTENTIAL INJURY: To avoid the risk of fire or electrical shock, use only the power cord provided with this product or the manufacturer's authorized replacement.
- CAUTION—POTENTIAL INJURY: To reduce the risk of fire, use only a 26 AWG or larger telecommunications (RJ-11) cord when connecting this product to the public switched telephone network. For users in Australia, the cord must be approved by the Australian Communications and Media Authority.

Warning—Potential Damage: To avoid loss of data or printer malfunction, do not touch the USB cable, any wireless network adapter, or the printer in the areas shown while actively printing.

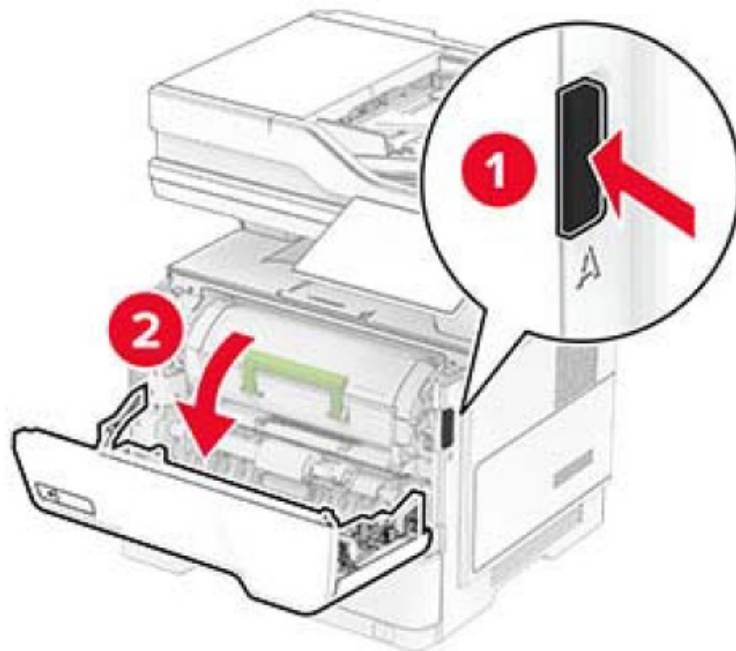


	Printer port	Function
1	Power cord socket	Connect the printer to a properly grounded electrical outlet.
2	Ethernet port	Connect the printer to a network.
3	USB port	Attach a keyboard or any compatible option.
4	USB printer port	Connect the printer to a computer.
5	EXT port	Connect more devices (telephone or answering machine) to the printer and the telephone line. Use this port if you do not have a dedicated fax line for the printer and if this connection method is supported in your country or region.

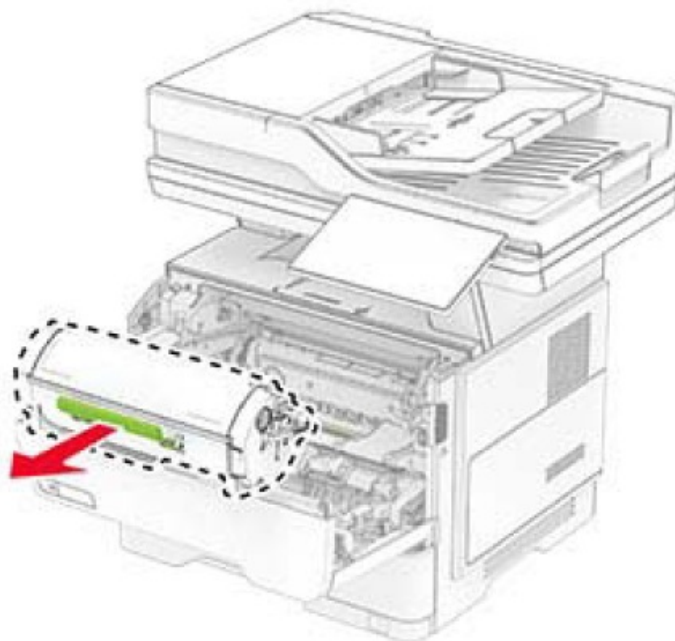
6	LINE port	Connect the printer to an active telephone line through a standard wall jack (RJ-11), DSL filter, or VoIP adapter, or any other adapter that allows you to access the telephone line to send and receive faxes.
---	-----------	---

Replacing the toner cartridge

1. Open door A

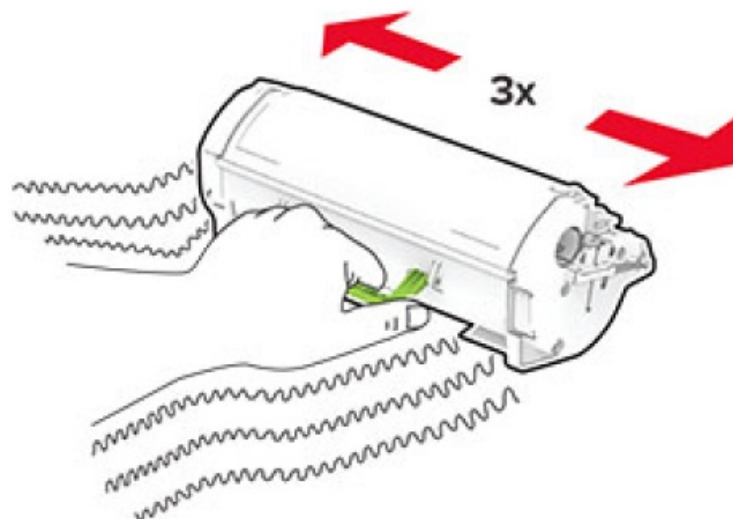


2. Remove the used toner cartridge.

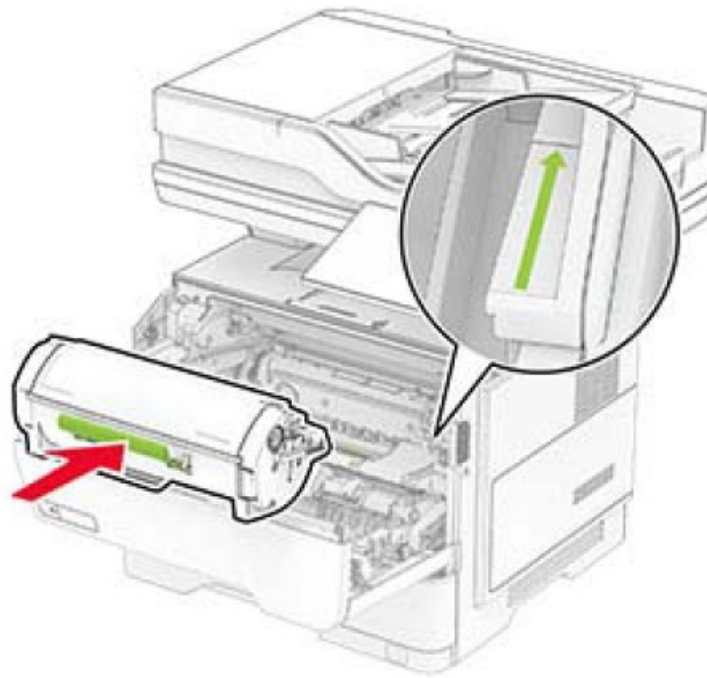


3. Unpack the new toner cartridge.

4. Shake the toner cartridge to redistribute the toner.



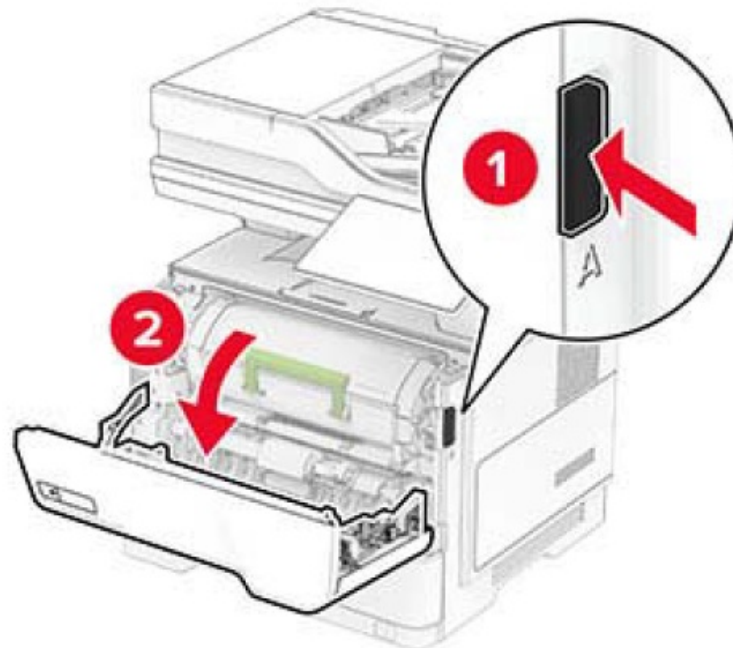
5. Insert the new toner cartridge.



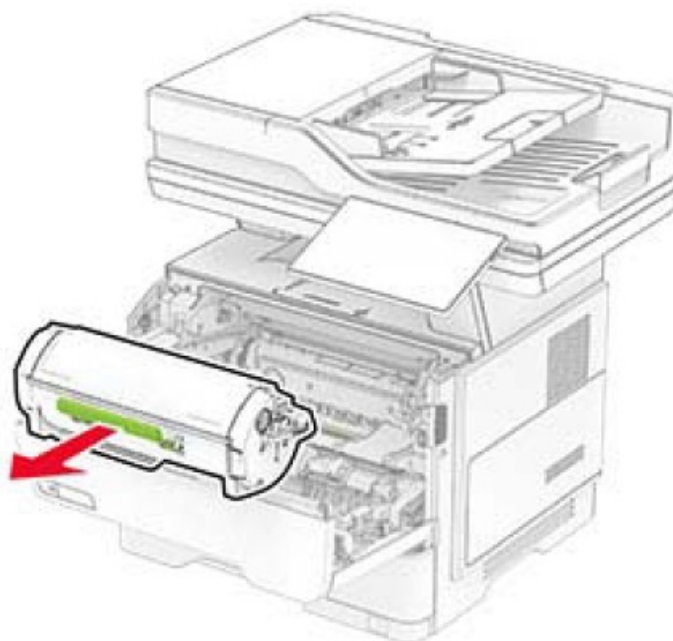
6. Close door A.

Replacing the imaging unit

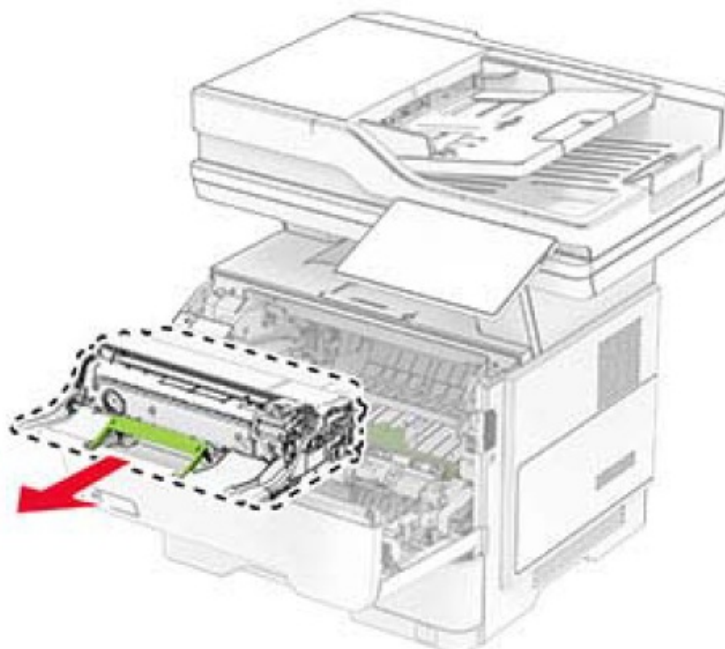
1. Open door A.



2. Remove the toner cartridge.

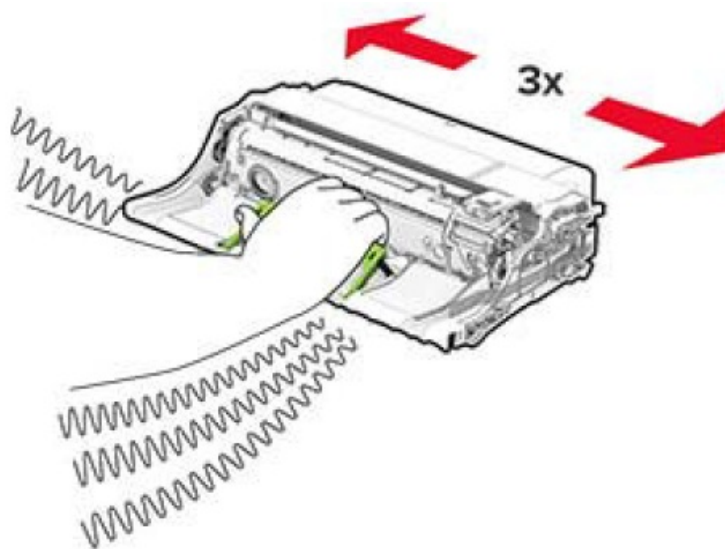


3. Remove the used imaging unit.



4. Unpack the new imaging unit.

5. Shake the imaging unit to redistribute the toner.



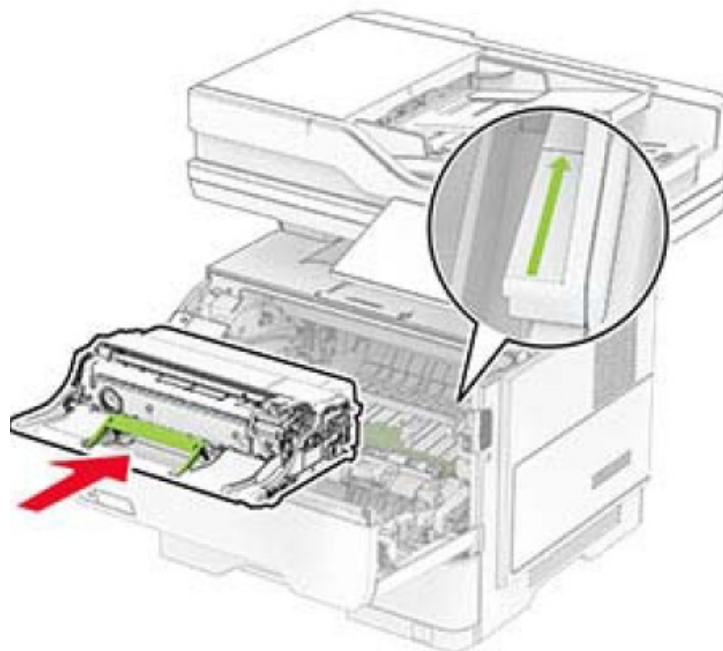
- Warning—Potential Damage: Do not expose the imaging unit to direct light for more than 10 minutes.

Extended exposure to light may cause print quality problems.

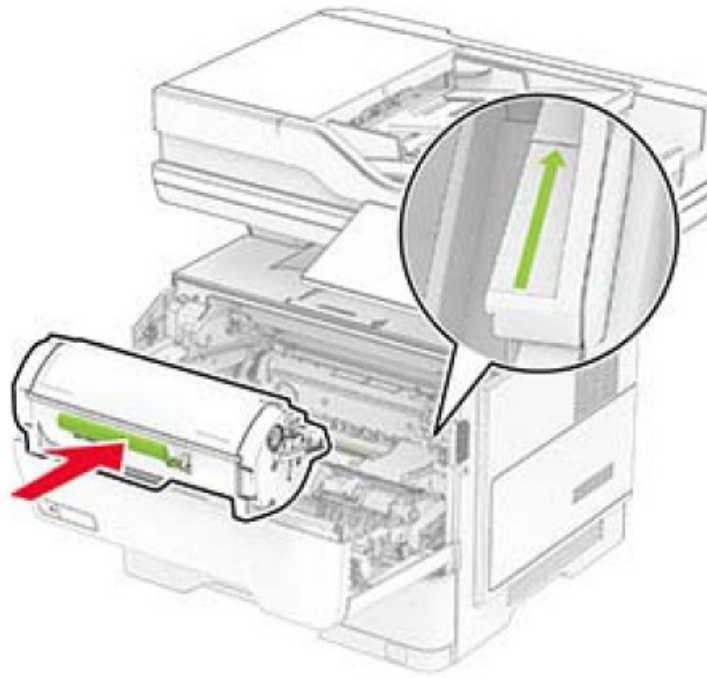
- Warning—Potential Damage: Do not touch the photoconductor drum. Doing so may affect the quality of future print jobs.



6. Insert the new imaging unit.



7. Insert the toner cartridge.



8. Close door A.

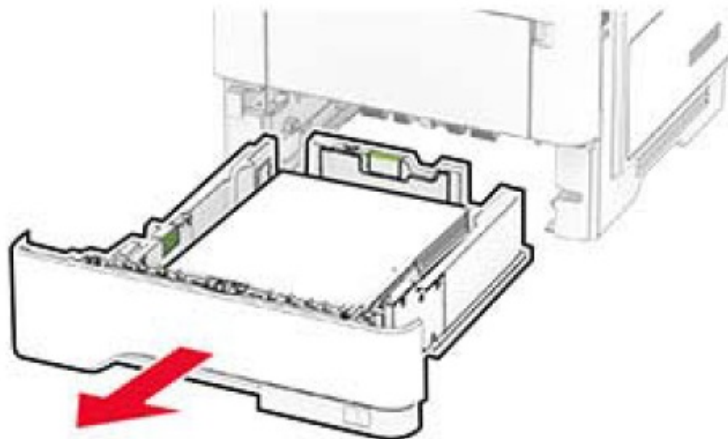
Loading trays

CAUTION—TIPPING HAZARD:

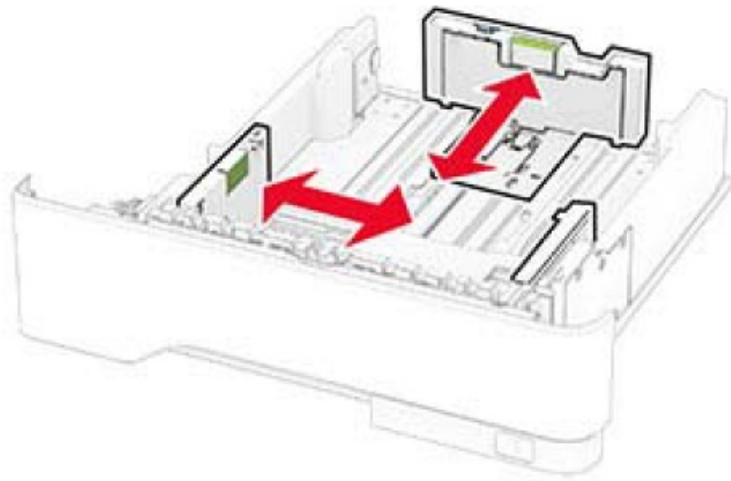
To reduce the risk of equipment instability, load each tray separately. Keep all other trays closed until needed.

1. Remove the tray.

Note: To avoid paper jams, do not remove the tray while the printer is busy.



2. Adjust the guides to match the size of the paper that you are loading



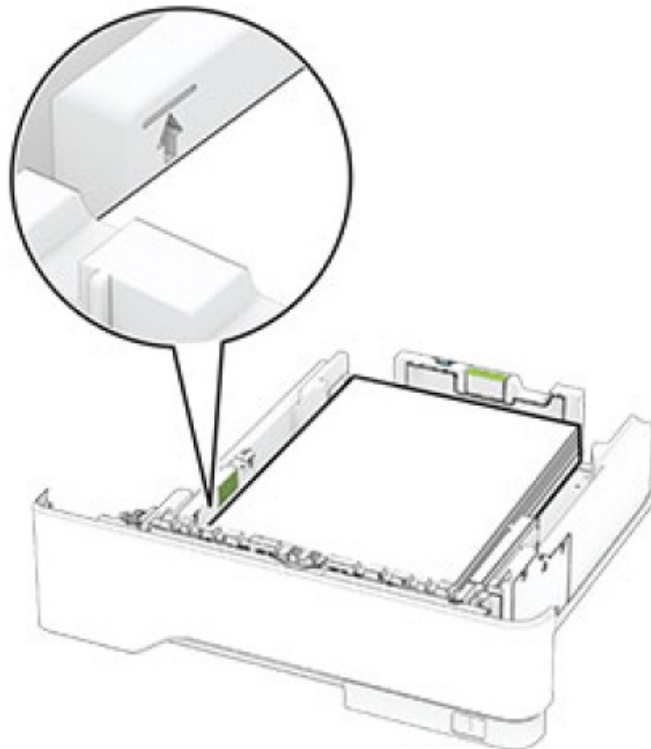
3. Flex, fan, and align the paper edges before loading.



4. Load the paper stack with the printable side facedown, and then make sure that the guides fit snugly against the paper.

Notes:

- Load letterhead facedown with the header toward the front of the tray for one-sided printing.
- Load letterhead faceup with the header toward the back of the tray for two-sided printing.
- Do not slide paper into the tray.
- To avoid paper jams, make sure that the stack height is below the maximum paper fill indicator.

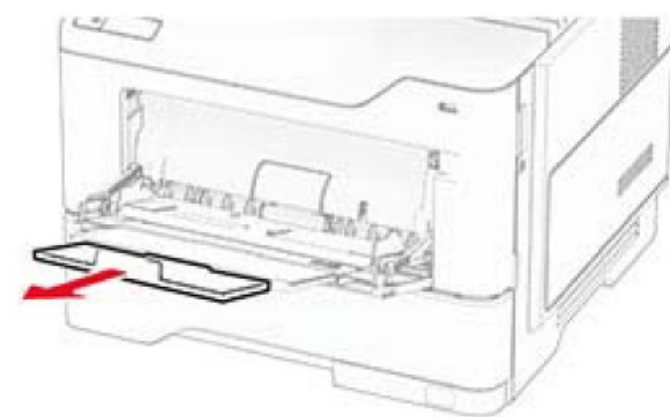
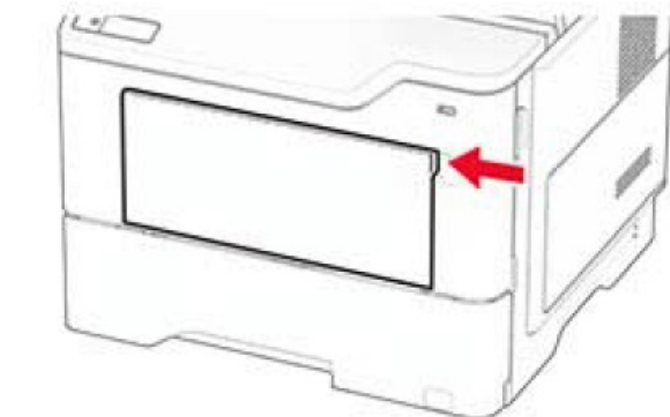


5. Insert the tray.

If necessary, set the paper size and paper type from the control panel to match the paper loaded.

Loading the multipurpose feeder

1.



2. Flex, fan, and align the paper edges before loading.



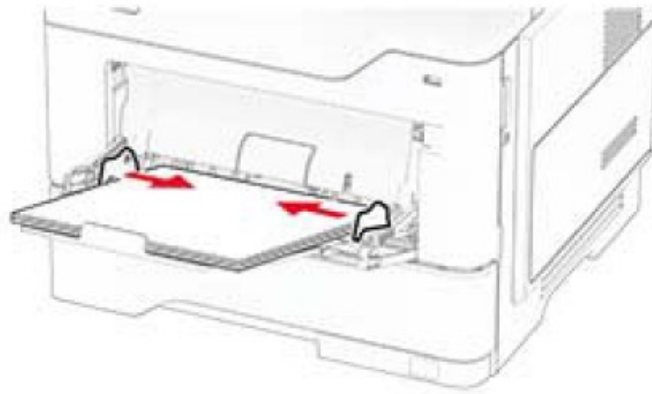
3. Load paper with the printable side faceup.

Notes:

- Load letterhead faceup with the header toward the rear of the printer for one-sided printing.
- Load letterhead facedown with the header toward the front of the printer for two-sided printing.
- Load envelopes with the flap facedown on the left side.

Warning—Potential Damage: Do not use envelopes with stamps, clasps, snaps, windows, coated linings, or self-stick adhesives.

4. Adjust the guide to match the size of the paper that you are loading.



5. From the control panel, set the paper size and paper type to match the paper loaded.

Setting the paper size and type

1. From the home screen, touch Settings > Paper > Tray Configuration > Paper Size/Type > select a paper source.
2. Set the paper size and type.

Installing the printer software

Notes:

- The print driver is included in the software installer package.
- For Macintosh computers with macOS version 10.7 or later, you do not need to install the driver to print on an AirPrint-certified printer. If you want custom printing features, then download the print driver.

1. Obtain a copy of the software installer package.
 - From the software CD that came with your printer.
 - From our website or the place where you purchased the printer.
2. Run the installer, and then follow the instructions on the computer screen.

Installing the fax driver

1. Go to our website or the place where you purchased the printer, and then obtain the installer package.
2. Run the installer, and then follow the instructions on the computer screen.

Updating firmware

- To enhance printer performance and fix issues, update the printer firmware regularly.
- For more information on updating the firmware, contact your sales representative.

1. Open a web browser, and then type the printer IP address in the address field.

Notes:

- View the printer IP address on the printer home screen.

The IP address appears as four sets of numbers separated by periods, such as 123.123.123.123.
- If you are using a proxy server, then temporarily disable it to load the web page correctly.

2. Click Settings > Device > Update Firmware.
3. Do either of the following:
 - Click Check for updates now > I agree, start updating.
 - Upload the flash file.
 - Browse to the flash file.
 - Click Upload > Start.

Adding printers to a computer

Before you begin, do one of the following:

- Connect the printer and the computer to the same network.

For more information on connecting the printer to a network, see “Connecting the printer to a Wi-Fi network”.
- Connect the computer to the printer. For more information, see “Connecting a computer to the printer”.
- Connect the printer to the computer using a USB cable. For more information, see “Attaching cables”.

Note: The USB cable is sold separately.

For Windows users

1. From a computer, install the print driver.


Note: For more information, see “Installing the printer software” on page 10.

2. Open the printer's folder, and then click Add a printer or scanner.
3. Depending on your printer connection, do one of the following:
 - Select a printer from the list, and then click Add device.
 - Click Show Wi-Fi Direct printers, select a printer, and then click Add device.
 - Click The printer that I want isn't listed, and then from the Add Printer window, do the following:
 - Select Add a printer using a TCP/IP address or hostname, and then click Next.
 - In the “Hostname or IP address” field, type the printer IP address, and then click Next.

Notes:

- View the printer IP address on the printer home screen. The IP address appears as four sets of numbers separated by periods, such as 123.123.123.123.
- If you are using a proxy server, then temporarily disable it to load the web page correctly.
- Select a print driver, and then click Next.
- Select Use the print driver that is currently installed (recommended), and then click Next.
- Type a printer name, and then click Next.
- Select a printer sharing option, and then click Next.
- Click Finish.

For Macintosh users

1. From a computer, open Printers & Scanners.
2. Click , and then select a printer.
3. From the Use menu, select a print driver.

Notes:

- To use the Macintosh print driver, select either AirPrint or Secure AirPrint.
- If you want custom printing features, then select the manufacturer's print driver. To install the driver, see "Installing the printer software" on page 10.

4. Add the printer.

Connecting the printer to a Wi-Fi network

Make sure that the Active Adapter is set to Auto. From the home screen, touch Settings > Network/Ports > Network Overview > Active Adapter.

1. From the home screen, touch Settings > Network/Ports > Wireless > Setup On Printer Panel > Choose Network.
2. Select a Wi-Fi network, and then type the network password.

Note:

For Wi-Fi-network-ready printer models, a prompt for Wi-Fi network setup appears during the initial setup.

Configuring Wi-Fi Direct

- Wi-Fi Direct® is a Wi-Fi-based peer-to-peer technology that allows wireless devices to connect directly to a Wi-Fi Direct-enabled printer without using an access point (wireless router).
- Make sure that the Active Adapter is set to Auto. From the home screen, touch Settings > Network/Ports > Network Overview > Active Adapter.

1. From the home screen, touch Settings > Network/Ports > Wi-Fi Direct.
2. Configure the settings.
 - Enable Wi-Fi Direct—Enables the printer to broadcast its own Wi-Fi Direct network.
 - Wi-Fi Direct Name—Assigns a name for the Wi-Fi Direct network.
 - Wi-Fi Direct Password—Assigns the password for negotiating the wireless security when using the peer-to-peer connection.
 - Show Password on Setup Page—Shows the password on the Network Setup Page.
 - Auto-Accept Push Button Requests—This lets the printer accept connection requests automatically.

Note: Accepting push-button requests automatically is not secure.

Notes:

- By default, the Wi-Fi Direct network password is not visible on the printer display. To show the password, enable the password peek icon. From the home screen, touch Settings > Security > Miscellaneous > Enable Password/PIN Reveal.
- You can see the password of the Wi-Fi Direct network without showing it on the printer display. From the home screen, touch Settings > Reports > Network > Network Setup Page.

Connecting a computer to the printer

Before connecting your computer, make sure that Wi-Fi Direct has been configured. For more information, see "Configuring Wi-Fi Direct" on page 11.

For Windows users

1. Open the printer's folder, and then click Add a printer or scanner.
2. Click Show Wi-Fi Direct printers, and then select the printer Wi-Fi Direct name.
3. From the printer display, take note of the eight-digit PIN of the printer.
4. Enter the PIN on the computer.

Note:

If the print driver is not already installed, then Windows downloads the appropriate driver.

For Macintosh users

1. Click the wireless icon, and then select the printer Wi-Fi Direct name.

Note: The string DIRECT-xy (where x and y are two random characters) is added before the Wi-Fi Direct name.

2. Type the Wi-Fi Direct password.

Note:

Switch your computer back to its previous network after disconnecting from the Wi-Fi Direct network.

Connecting a mobile device to the printer

Before connecting your mobile device, make sure that Wi-Fi Direct has been configured. For more information, see "Configuring Wi-Fi Direct".

Connecting using Wi-Fi Direct

Note: These instructions apply only to Android mobile devices.

1. From the mobile device, go to the settings menu.
2. Enable Wi-Fi, and then tap Wi-Fi Direct.
3. Select the printer Wi-Fi Direct name.
4. Confirm the connection on the printer control panel.

Connecting using Wi-Fi

1. From the mobile device, go to the settings menu.
2. Tap Wi-Fi, and then select the printer Wi-Fi Direct name.

Note: The string DIRECT-xy (where x and y are two random characters) is added before the Wi-Fi Direct name.

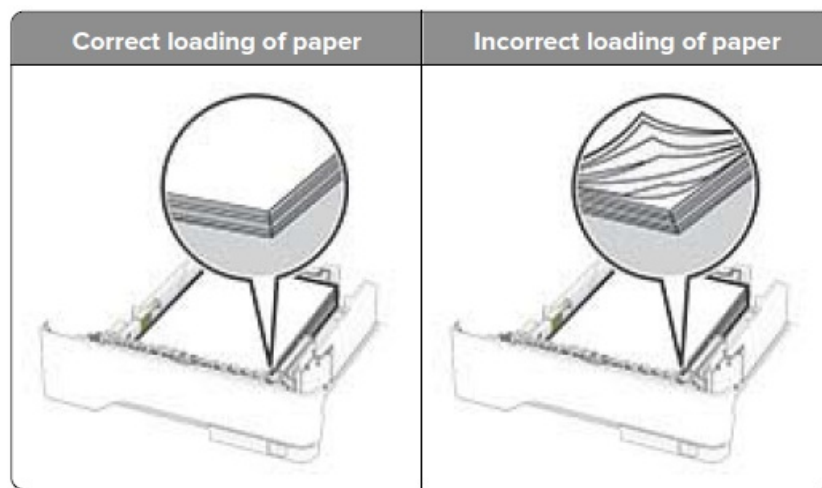
3. Enter the Wi-Fi Direct password.

Clearing jams

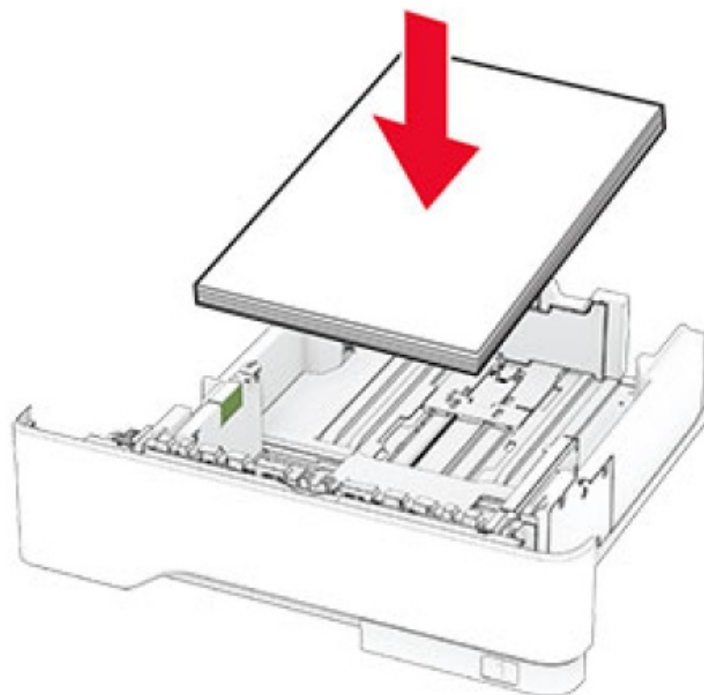
Avoiding jams

Load paper properly

•



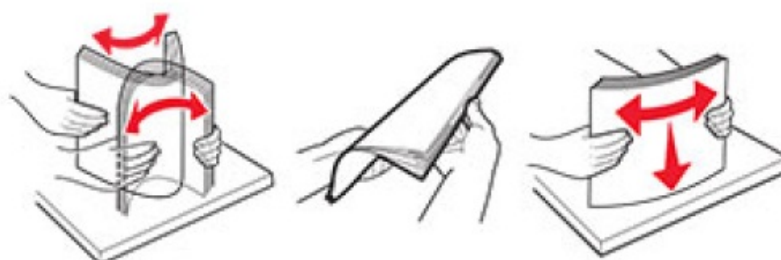
- Do not load or remove a tray while the printer is printing.
- Do not load too much paper. Make sure that the stack height is below the maximum paper fill indicator.
- Do not slide paper into the tray. Load paper as shown in the illustration.



- Make sure that the paper guides are positioned correctly and are not pressed tightly against the paper or envelopes.
- Push the tray firmly into the printer after loading the paper.

Use recommended paper

- Use only recommended paper or specialty media.
- Do not load paper that is wrinkled, creased, damp, bent, or curled.
- Flex, fan, and align the paper edges before loading.

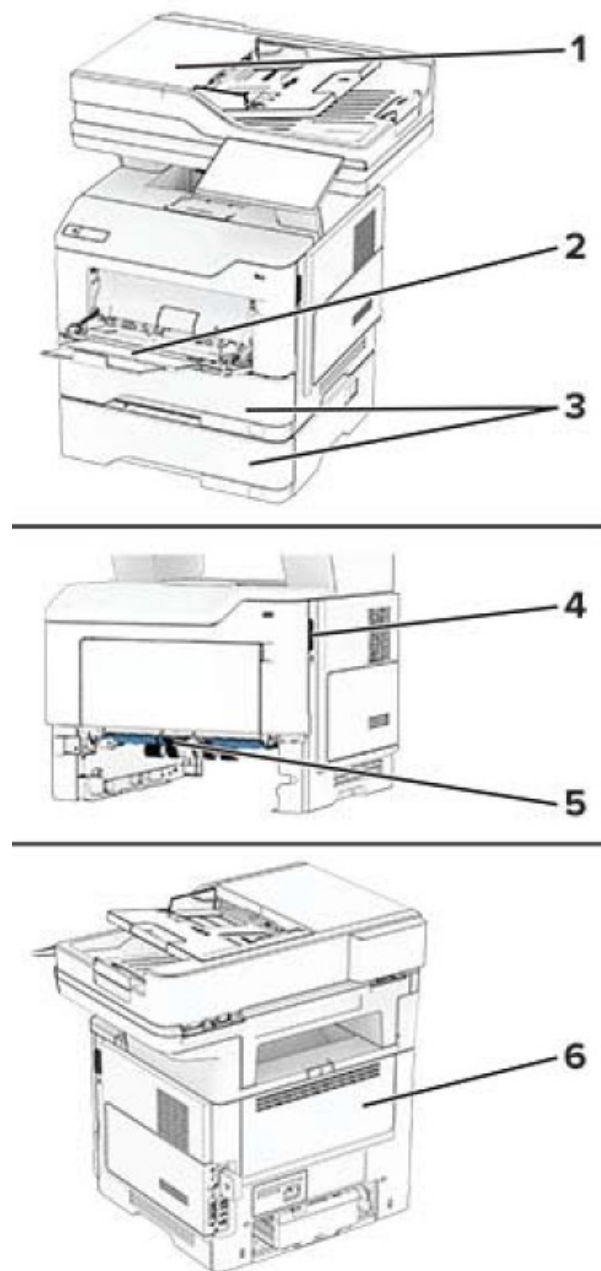


- Do not use paper that has been cut or trimmed by hand.
- Do not mix paper sizes, weights, or types in the same tray.
- Make sure that the paper size and type are set correctly on the computer or printer control panel.
- Store paper according to manufacturer recommendations.

Identifying jam locations

Notes:

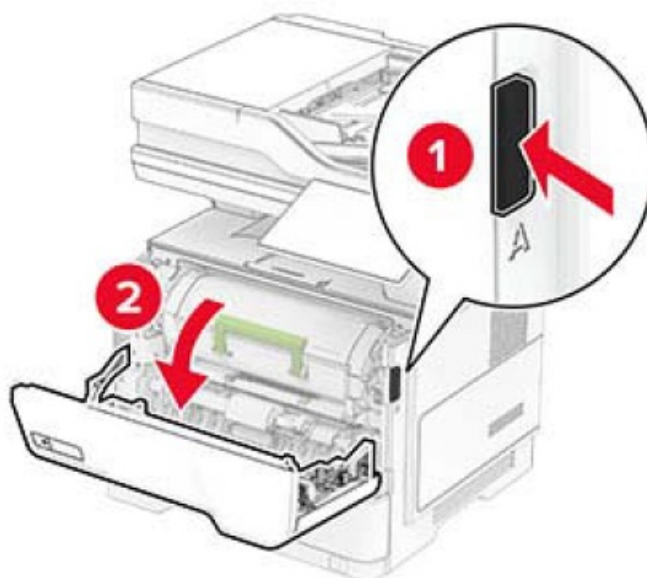
- When Jam Assist is set to On, the printer flushes blank pages or pages with partial prints after a jammed page has been cleared. Check your printed output for blank pages.
- When Jam Recovery is set to On or Auto, the printer reprints jammed pages.



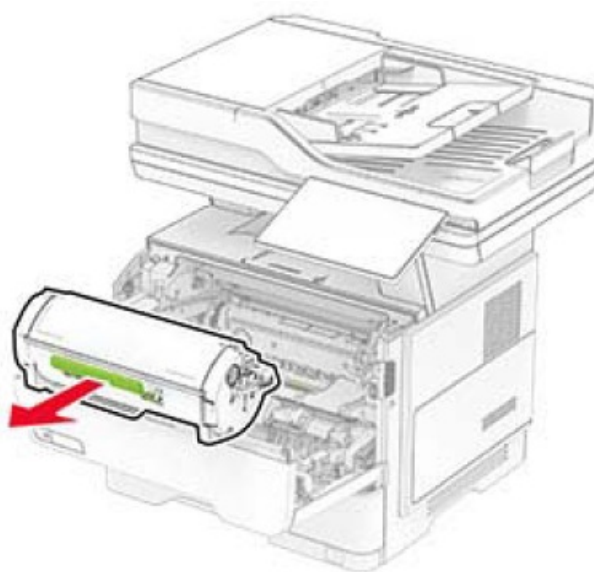
	Jam locations
1	Automatic document feeder
2	Multipurpose feeder
3	Trays
4	Door A
5	Duplex unit
6	Door B

Paper jam in door A

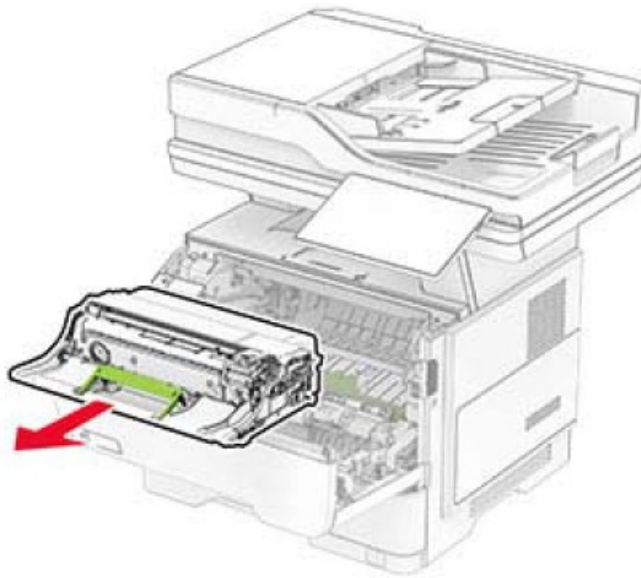
1. Open door A.



2. Remove the toner cartridge



3. Remove the imaging unit.

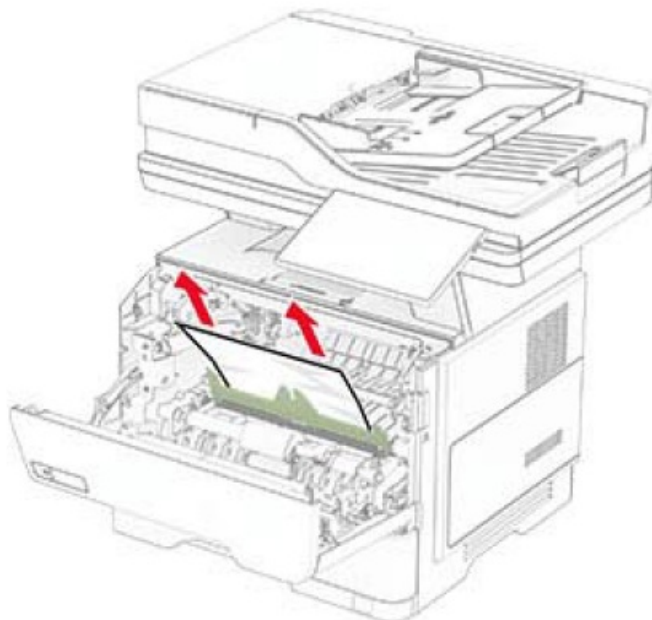


- **Warning—Potential Damage:** Do not expose the imaging unit to direct light for more than 10 minutes. Extended exposure to light may cause print quality problems.
- **Warning—Potential Damage:** Do not touch the photoconductor drum. Doing so may affect the quality of future print jobs.



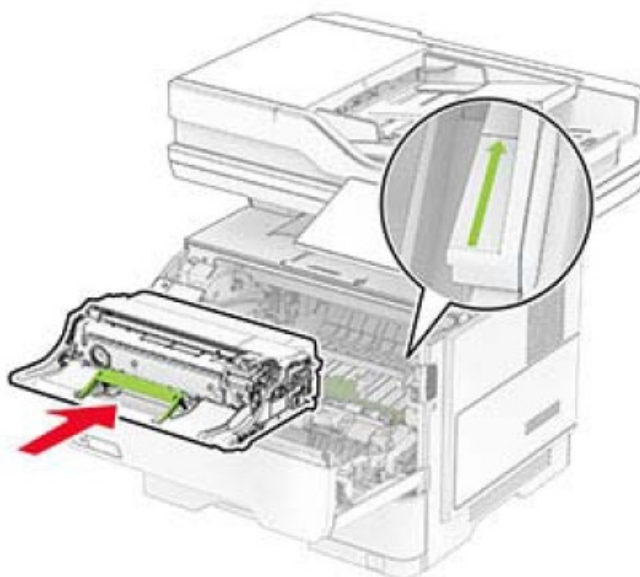
4. Remove the jammed paper.

- **CAUTION—HOT SURFACE:** The inside of the printer might be hot. To reduce the risk of injury from a hot component, allow the surface to cool before touching it.
- **Note:** Make sure that all paper fragments are removed.



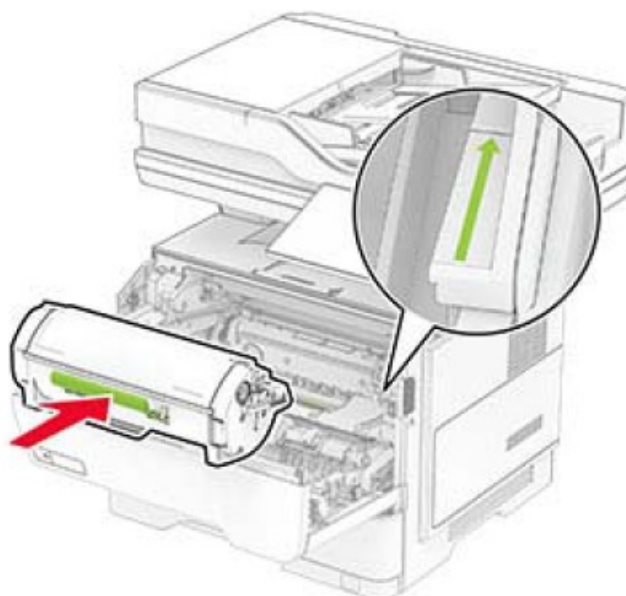
5. Insert the imaging unit.

Note: Use the arrows inside the printer as guides.



6. Insert the toner cartridge.

Note: Use the arrows inside the printer as guides.

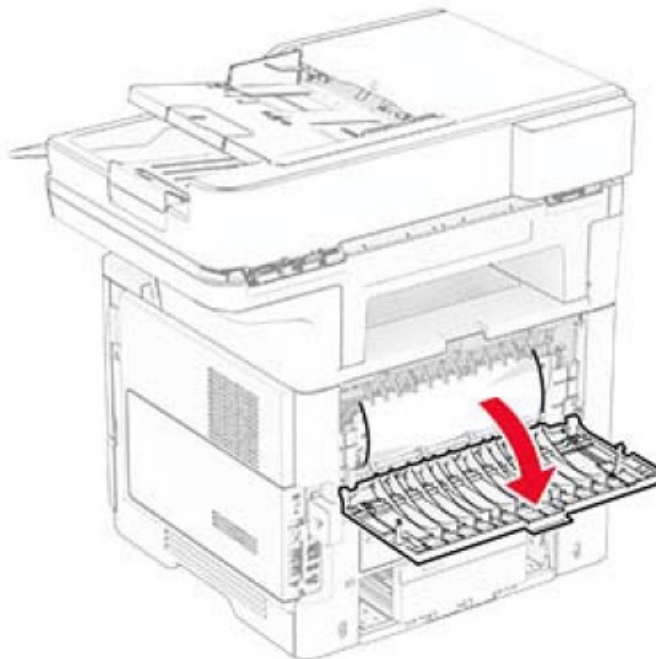


7. Close door A.

Paper jam in door B

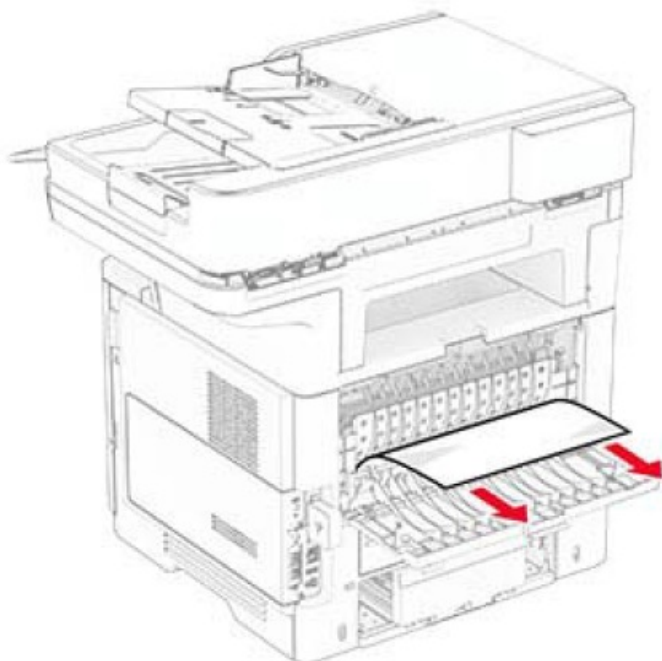
1. Open door B.

CAUTION—HOT SURFACE: The inside of the printer might be hot. To reduce the risk of injury from a hot component, allow the surface to cool before touching it.



2. Remove the jammed paper.

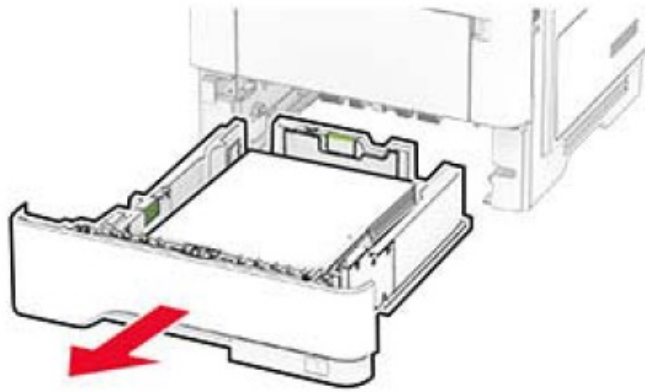
Note: Make sure that all paper fragments are removed.



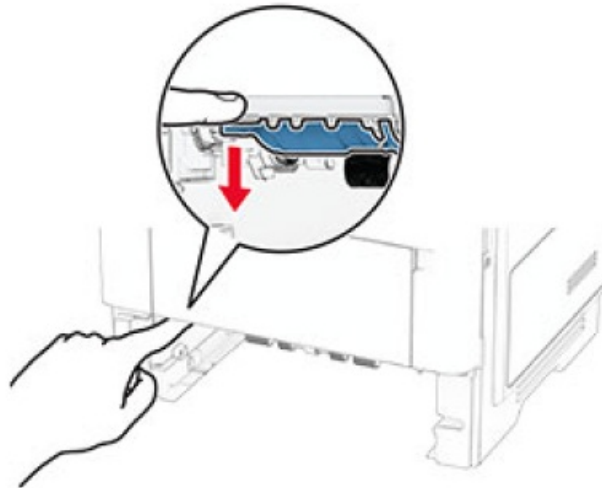
3. Close door B.

Paper jam in the duplex unit

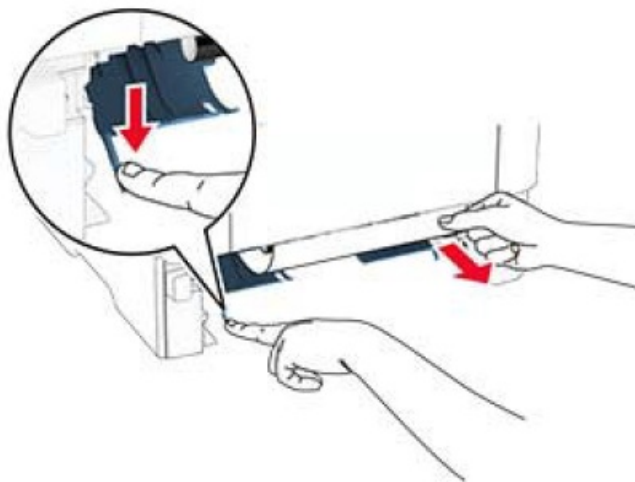
1. Remove the tray.



2. Push the duplex unit latch to open the duplex unit.



3. Remove the jammed paper.
Note: Make sure that all paper fragments are removed.

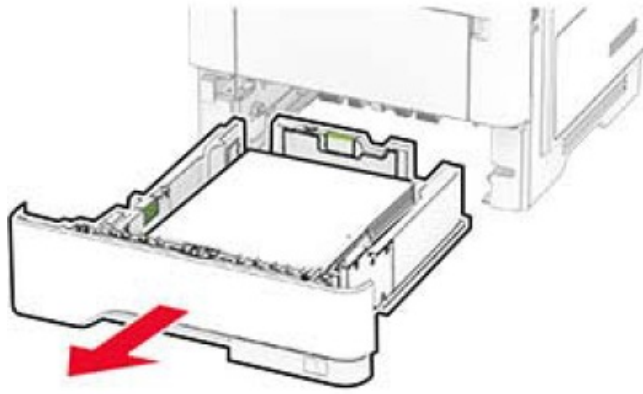


4. Insert the tray.

Paper jam in trays

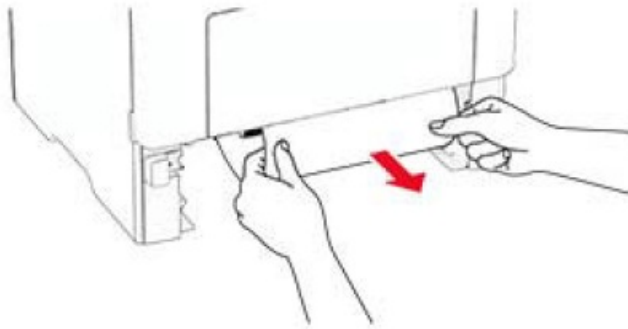
1. Remove the tray.

Warning—Potential Damage: To prevent damage from electrostatic discharge, touch any exposed metal frame of the printer before accessing or touching interior areas of the printer.



2. Remove the jammed paper.

Note: Make sure that all paper fragments are removed.



3. Insert the tray.

Paper jam in the multipurpose feeder

1. Remove paper from the multipurpose feeder.
2. Remove the jammed paper.

Note: Make sure that all paper fragments are removed.

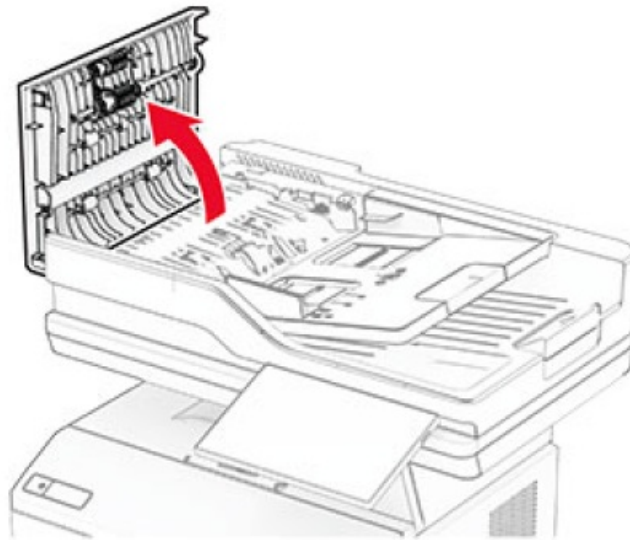


3. Reload paper, and then adjust the paper guide.

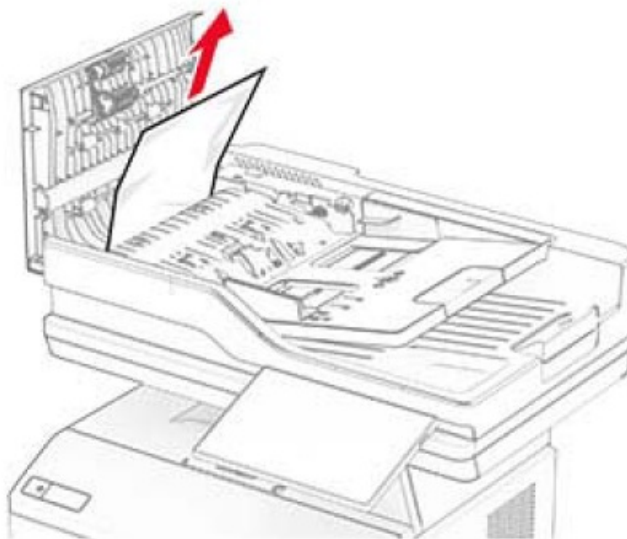
Paper jam in the automatic document feeder

Paper jam under the ADF top cover

1. Remove all original documents from the ADF tray.
2. Open door C



3. Remove the jammed paper.
Note: Make sure that all paper fragments are removed.

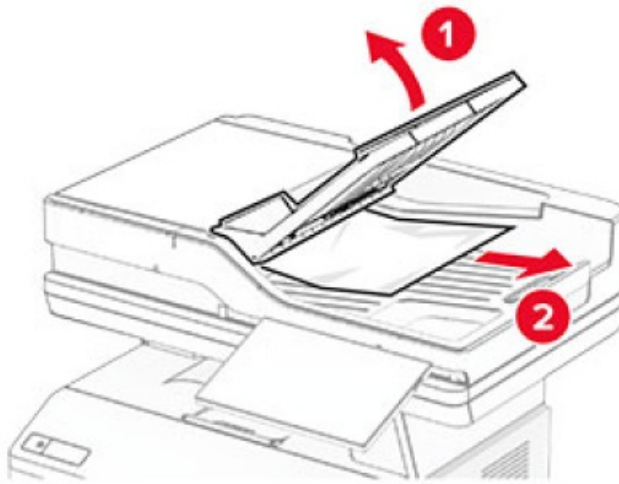


4. Close door C.

Paper jam under the ADF output bin

1. Remove all original documents from the ADF tray.
2. Lift the ADF tray, and then remove the jammed paper.

Note: Make sure that all paper fragments are removed



3. Place the ADF tray back into place.

Documents / Resources

	<p>SHARP MX-B468F Printer Copier Scanner [pdf] User Guide MX-B468F, MX-B468F Printer Copier Scanner, Printer Copier Scanner, Copier Scanner, Scanner</p>
--	---

References

- [Your request has been blocked. This could be due to several reasons.](#)
- [126](#) - [_____](#)
- [163](#) - [_____](#)
- [E-Mail-Adresse kostenlos, FreeMail & Nachrichten | WEB.DE](#)
- [Yeah.net](#) - [_____](#)
- [Online Fax Services | Send a Fax Online Today | MyFax](#)
- [Your request has been blocked. This could be due to several reasons.](#)
- [accounts.zoho.com/home#security/](#)
- [Manage your Apple ID](#)
- [How to set up a multifunction device or application to send emails using Microsoft 365 or Office 365 | Microsoft Learn](#)
- [AOL](#)
- [Yahoo](#)
- [Turn your access to third-party email programs on or off in Xfinity Email - Xfinity Support](#)
- [User Manual](#)

[Manuals+](#), [Privacy Policy](#)

This website is an independent publication and is neither affiliated with nor endorsed by any of the trademark owners. The "Bluetooth®" word mark and logos are registered trademarks owned by Bluetooth SIG, Inc. The "Wi-Fi®" word mark and logos are registered trademarks owned by the Wi-Fi Alliance. Any use of these marks on this website does not imply any affiliation with or endorsement.