

## SHARP ME432 MultiSync Dismantle



# SHARP ME432 MultiSync Dismantle Instruction Manual

[Home](#) » [Sharp](#) » SHARP ME432 MultiSync Dismantle Instruction Manual 

### Contents

- [1 SHARP ME432 MultiSync Dismantle](#)
- [2 Specifications](#)
- [3 Tools for dismantling](#)
- [4 Parts List](#)
- [5 FAQs](#)
- [6 Documents / Resources](#)
  - [6.1 References](#)

# SHARP

SHARP ME432 MultiSync Dismantle



## Specifications

- **Model:** PN-ME432, PN-ME502, PN-ME552, PN-ME652
- **Power Source:** AAA battery for remote control

## Scope

This document describes dismantling instruction according to Annex VII of Directive 2012/19/EU.

## Tools for dismantling

- Screw Driver
- Nipper

## Dismantle Procedure

This product can be dismantled by below steps.

1. Remove Back covers (section 5)
2. Remove Printed circuit boards (section 6)
3. Dismantle LCD (section 7)
4. Remove Electrolyte Capacitors (section 8)

## Batteries

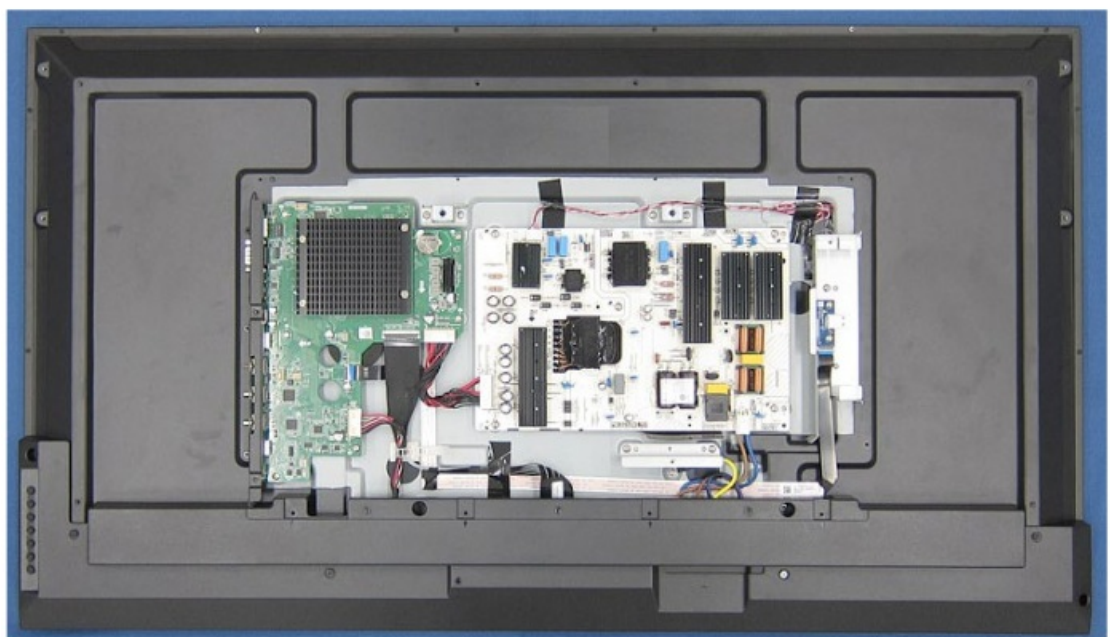
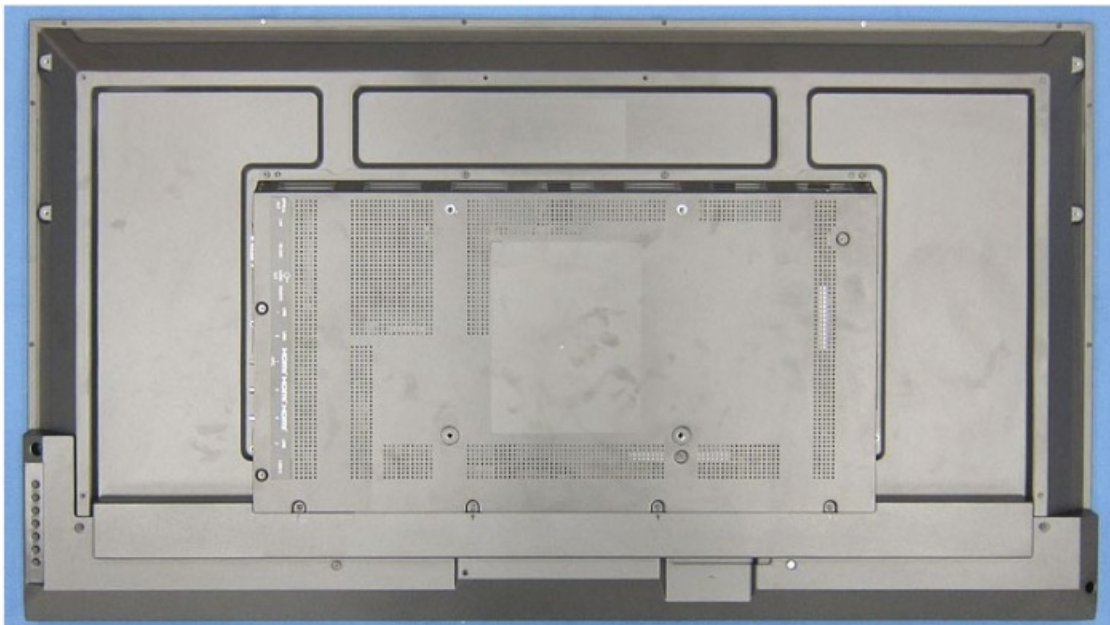
This model uses only AAA batteries for remote control. The battery can easily be removed.

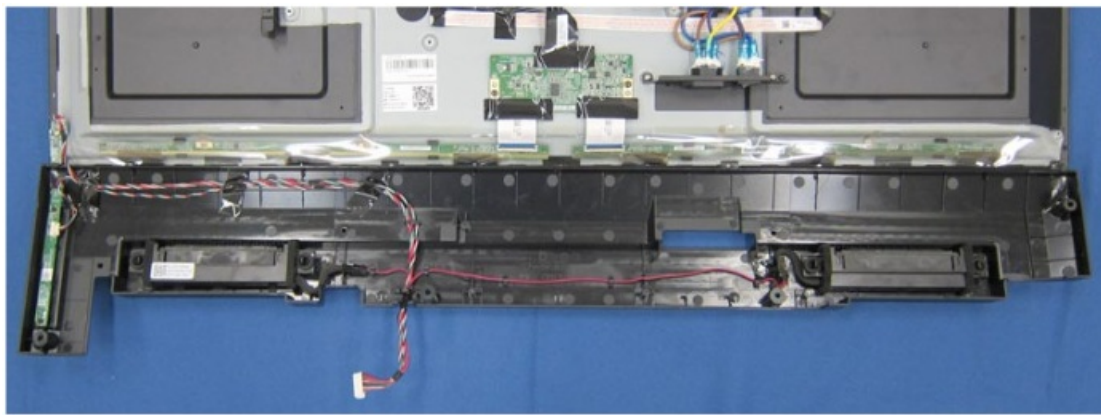


## Back covers

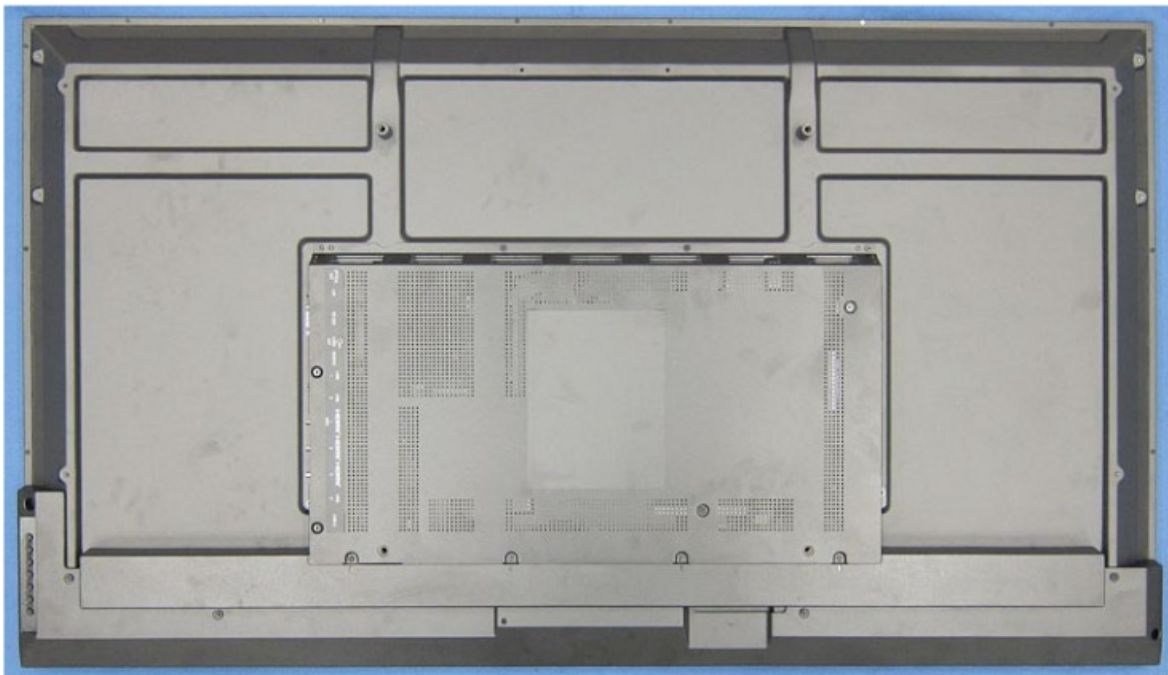
cover can be removed by screw driver.

### 1. PN-ME432

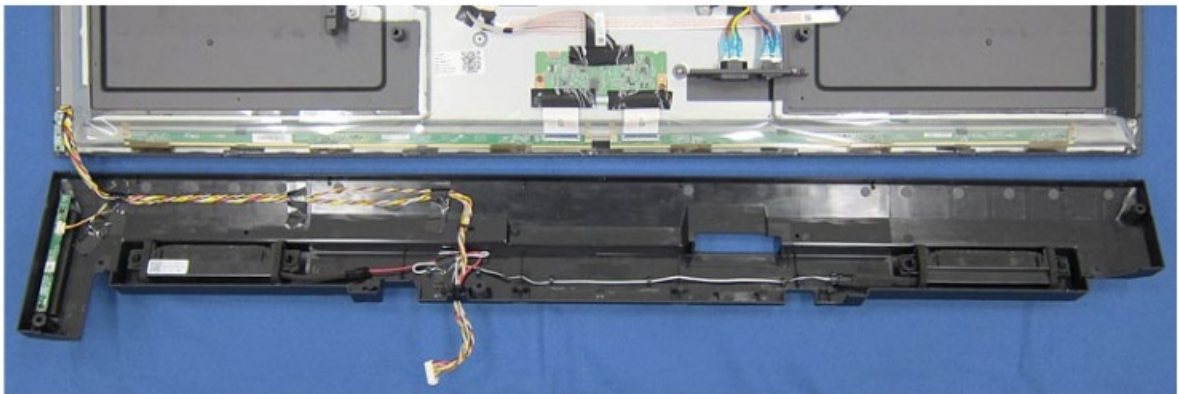




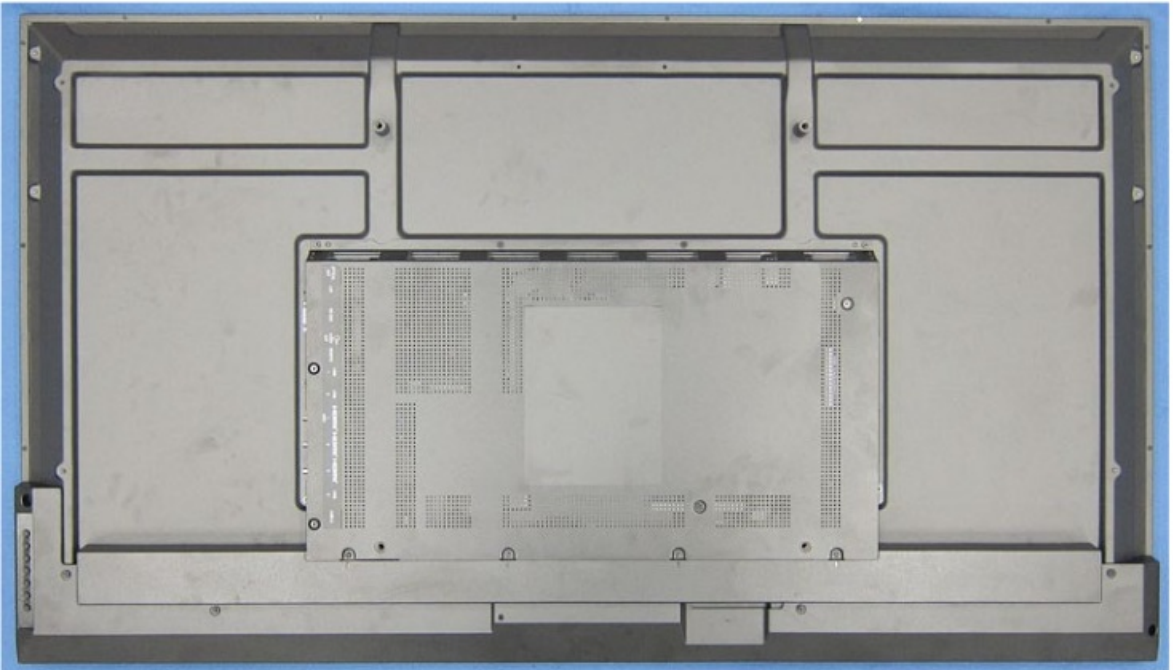
## 2. PN-ME502

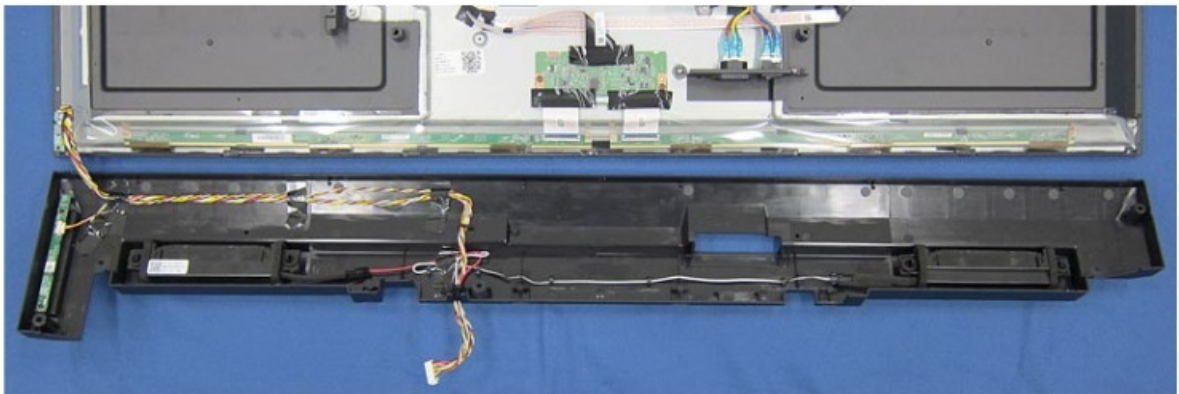




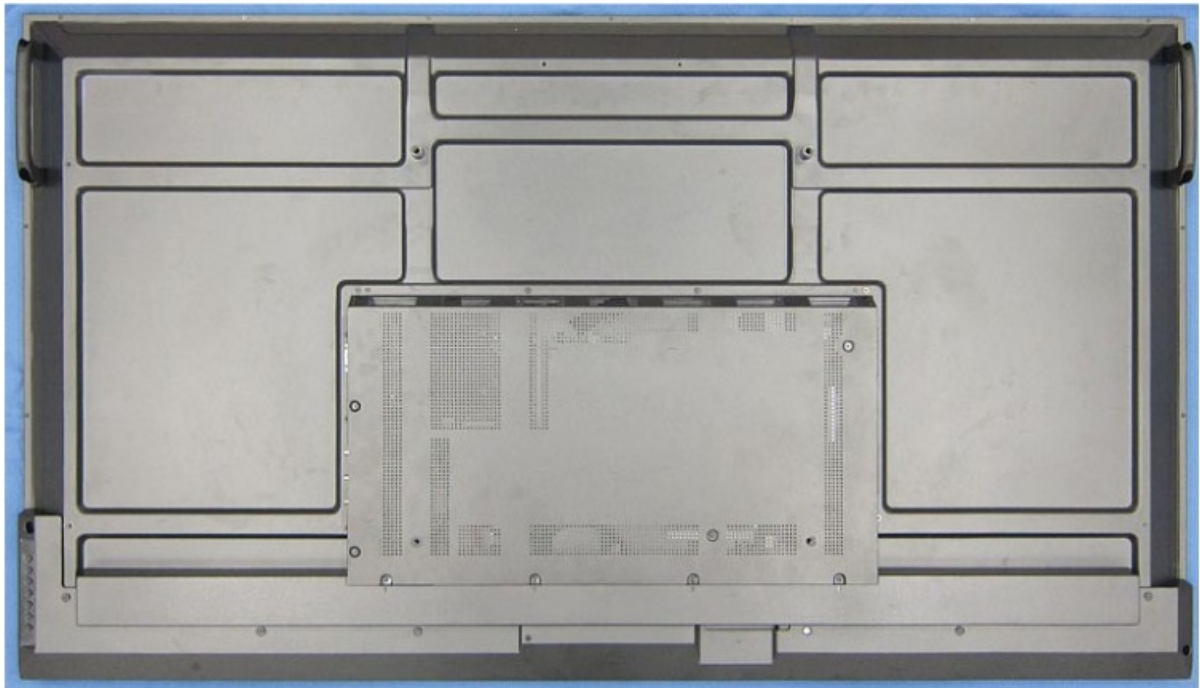


3. PN-ME552

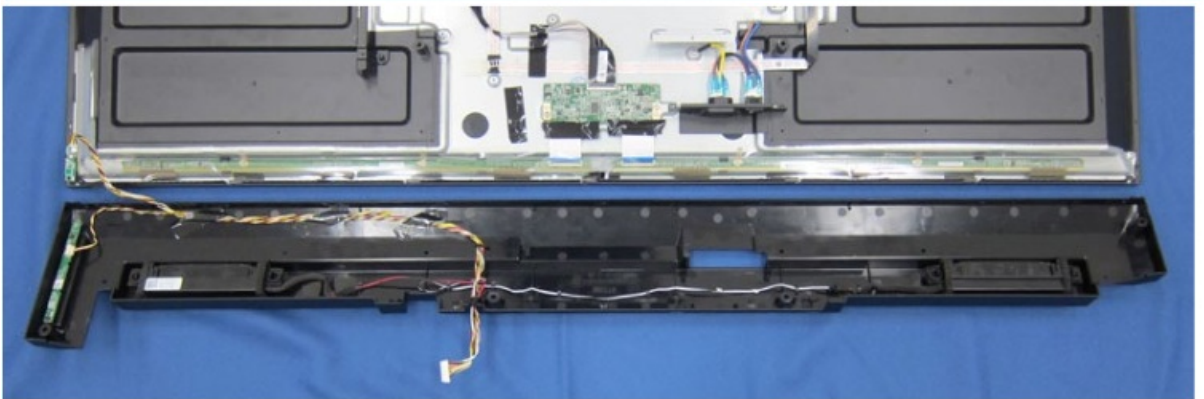




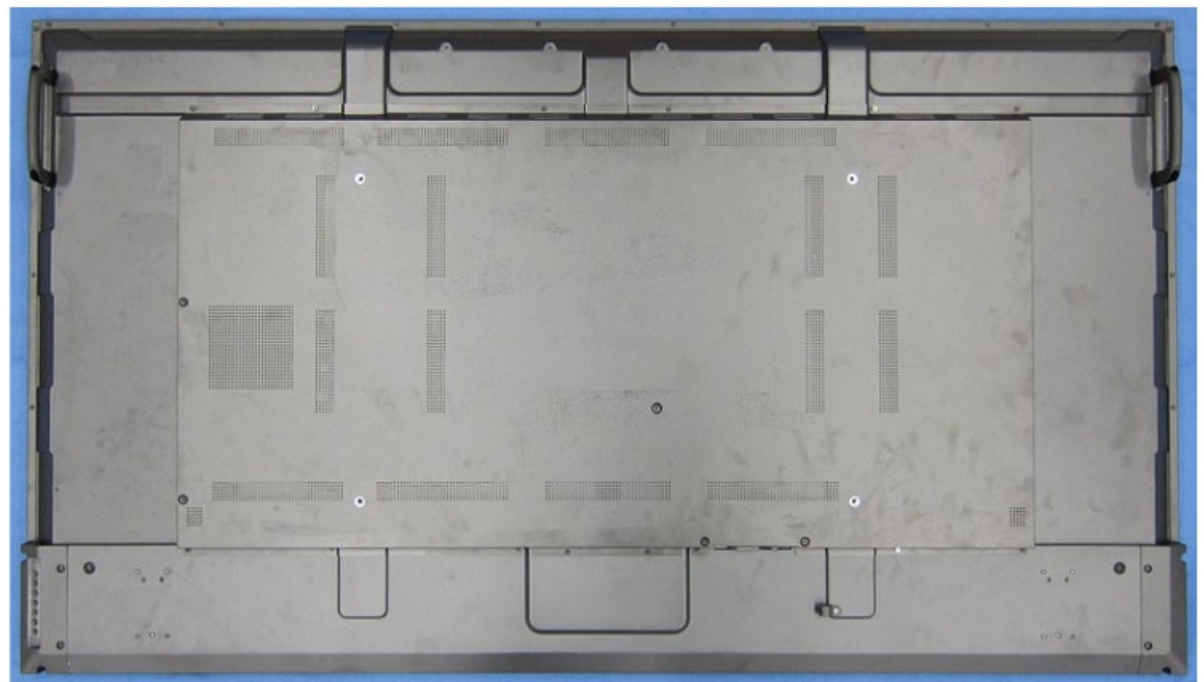
4. PN-ME652

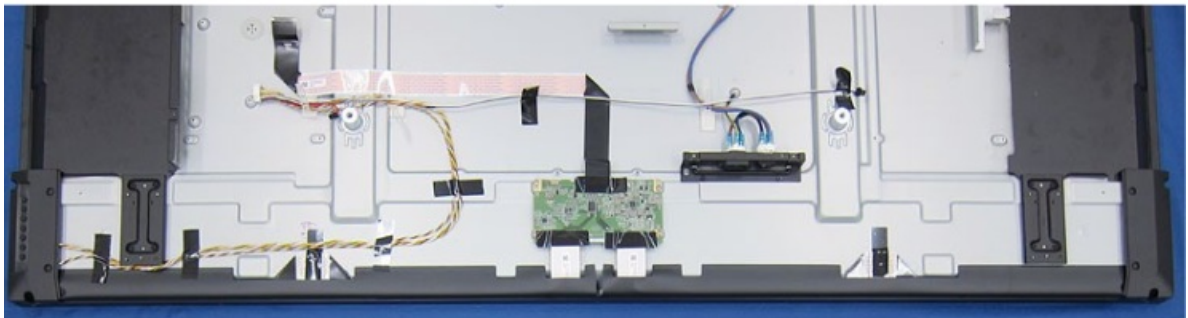
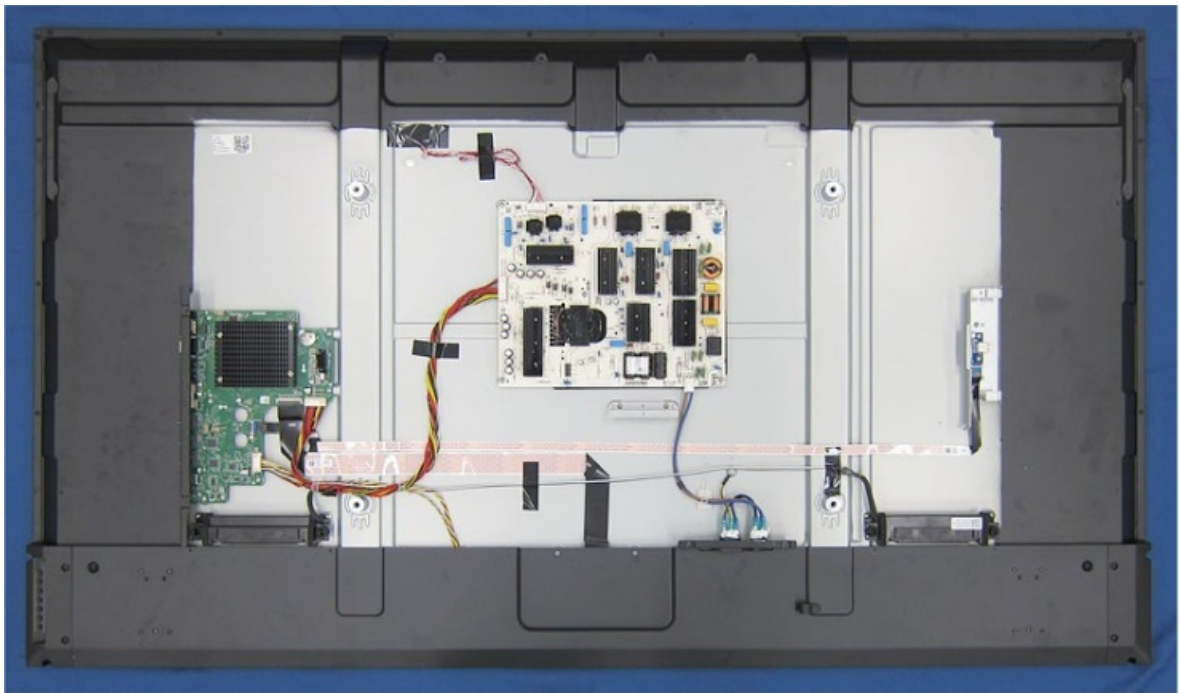






5. PN-ME652





### **PWB and other electronic components**

All electronic components can be removed by screwdriver.

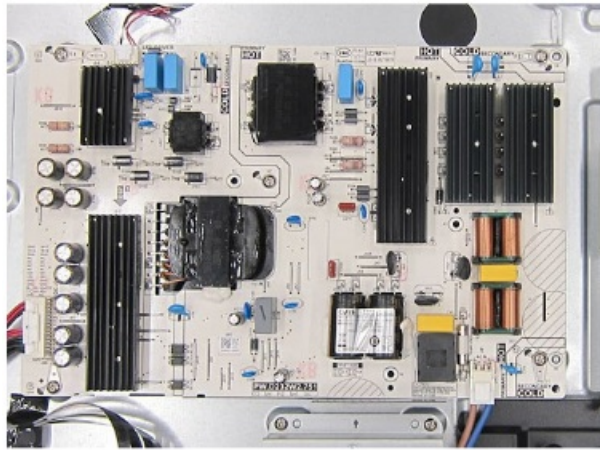
#### **1. MAIN PWB**



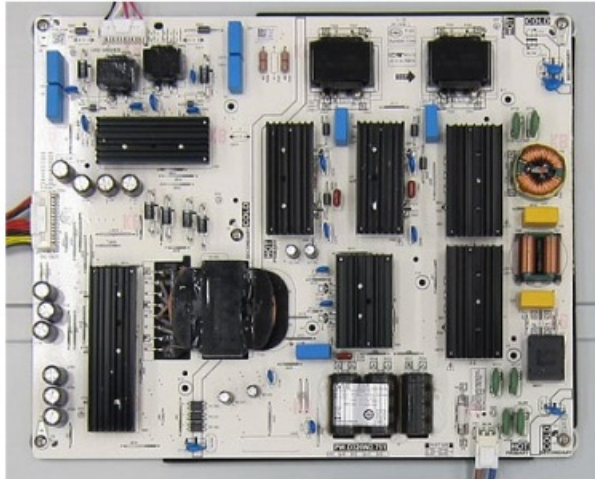
#### **2. POWER PWB**

PN-ME432 / PM-ME502 / PN-ME552





PN-ME652



### 3. T-CON PWB

PN-ME432



PN-ME502



PN-ME552



4. KEY PWB

5. IR PWB



6. WIFI CTL PWB

7. Speaker



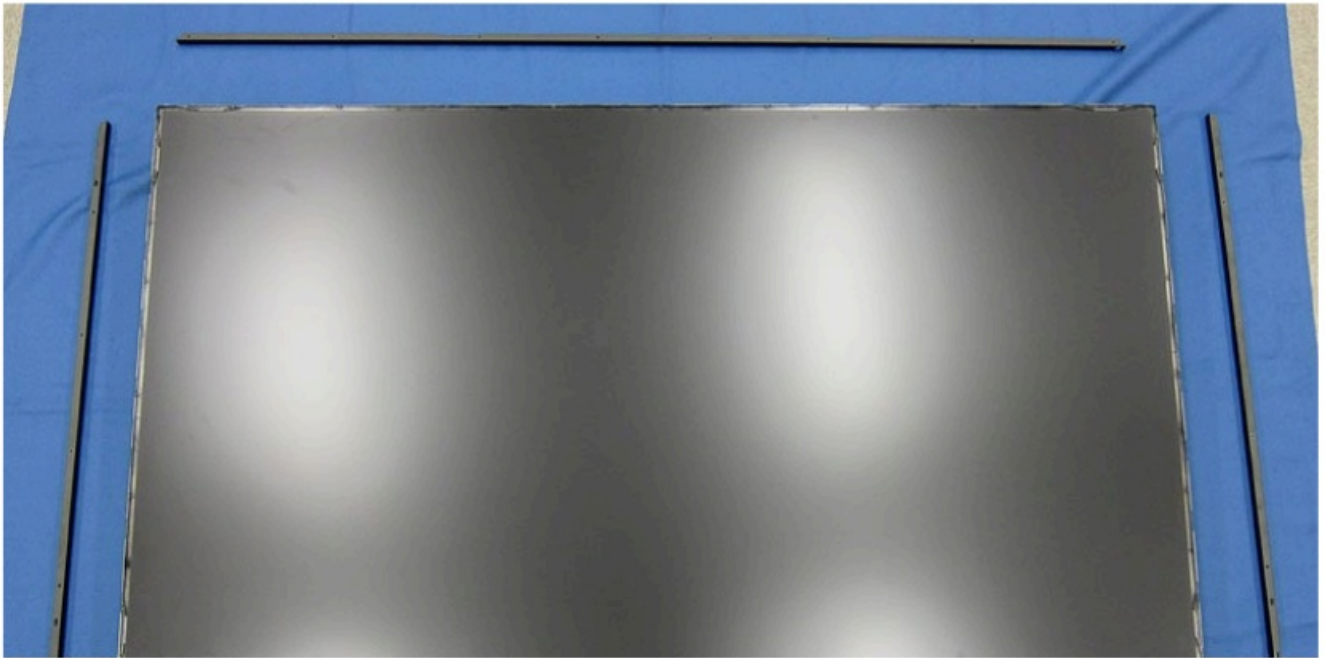
## LCD Module bezels

### 1. PN-ME432/PN-ME502/PN-ME552



### 2. PN-ME652





## Parts List

The spare parts listed in the column “Spare Parts” below are kept available in accordance to legal requirements of EU Regulation 2019/2021 for professional repairer.

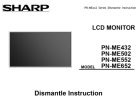
Spare Part	Part Name/ Element of Part
a. Internal power board	Power PWB
b. Connectors to connect external equipment	Main PWB
c. Batteries and Accumulators	not applicable
d. DVD/Blue-Ray module	not applicable
e. HD/SSD module	not applicable

## FAQs

- **Q: Is dismantling the product covered under warranty?**
  - A: Dismantling the product may void the warranty. It is recommended to check the warranty terms before dismantling.
- **Q: Can I reassemble the product after dismantling?**
  - A: Reassembling the product should be done carefully following the reverse steps of dismantling. It is advisable to seek professional help if unsure.

---

## Documents / Resources

	<p><a href="#">SHARP ME432 MultiSync Dismantle</a> [pdf] Instruction Manual PN-ME432, PN-ME502, PN-ME552, PN-ME652, ME432 MultiSync Dismantle, ME432, MultiSyn c Dismantle, Dismantle</p>
--	---

## References

- [User Manual](#)

[Manuals+](#), [Privacy Policy](#)

This website is an independent publication and is neither affiliated with nor endorsed by any of the trademark owners. The "Bluetooth®" word mark and logos are registered trademarks owned by Bluetooth SIG, Inc. The "Wi-Fi®" word mark and logos are registered trademarks owned by the Wi-Fi Alliance. Any use of these marks on this website does not imply any affiliation with or endorsement.