



## SHARP A201U-B Projector Specs User Guide

[Home](#) » [Sharp](#) » SHARP A201U-B Projector Specs User Guide 

# SHARP

Projector  
A201U-B  
Quick Setup Guide

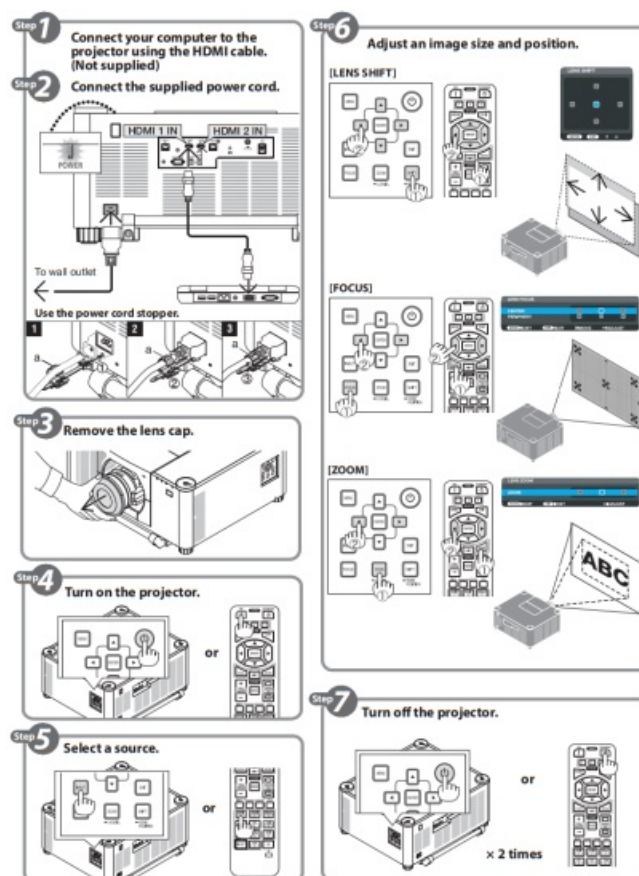
### Contents

- [1 About the User's Manual](#)
- [2 The illustrations for this Quick Setup Guide](#)
- [3 Quick Setup Guide](#)
- [4 Documents / Resources](#)
  - [4.1 References](#)

### About the User's Manual

- First read the Important Information. It covers information about projector safety and cautions.
- The user's manual (\*) is posted on the web site in PDF (Portable Document Format) and provides detailed product and usage information for your projector.
  - \* The user's manual is available in 17 languages.

### The illustrations for this Quick Setup Guide



## Quick Setup Guide

**NOTE:** This document explains the basic operations of the projector installed with the lens unit.

### CAUTION

This projector is classified as risk group 3 of IEC/EN 62471-5:2015.  
Do not enter the hazard zone. See Important Information for details.

1. **Connect your computer to the projector using the HDMI cable. (Not supplied)**
2. **Connect the supplied power cord.**

Make sure that the prongs are fully inserted into both the AC IN terminal and the wall outlet.

To prevent the power cord from accidentally removing from the AC IN of the projector, use the power cord stopper.

3. **Remove the lens cap.**
4. **Turn on the projector.**

### WARNING

The projector produces a strong light. When turning on the power, make sure no one within projection range is looking at the lens.

1. Press the (POWER) button on the projector cabinet or the POWER ON (1) button on the remote control.

5. **Select a source.**

1. Press the INPUT button on the cabinet for at least 1 second or the HDMI1 or HDMI2 button on the remote control.

6. **Adjust an image size and position.**

### CAUTION


Perform the adjustment from behind or from the side of the projector. Adjusting from the front could expose your

eyes to strong light which could injure them.

**NOTE:**

Adjustment procedures are differed on lens unit. Refer to the User's manual about detailed adjustment for each lens unit.

**[LENS SHIFT]**


1. Press either SHIFT/HOME POSITION button on the cabinet or SHIFT button on the remote control.
2. Press the  buttons to move the projected image.

**[FOCUS]**





1. Press the FOCUS button.
2. Press buttons to adjust focus.

The focus adjustment around the optical axis and in the peripheral area are required depending on the lens unit.

**[ZOOM]**

1. Press either ZOOM/L-CALIB. button on the cabinet or ZOOM button on the remote control.
2. Press  buttons to adjust zoom.

**7 Turn off the projector.**

1. Press the  (POWER) button on the projector cabinet or the STANDBY  button on the remote control.
2. Press either the  (POWER) or the STANDBY  button again.
3. Mount the lens cap.
4. Disconnect all the cables.

The terms HDMI, HDMI High-Definition Multimedia Interface, HDMI Trade Dress and the HDMI Logos are trademarks or registered trademarks of HDMI Licensing Administrator, Inc.

A201U-B Quick Setup Guide

**SHARP**



[https://www.sharp-nec-displays.com/dl/en/pj\\_manual/lineup.html](https://www.sharp-nec-displays.com/dl/en/pj_manual/lineup.html)

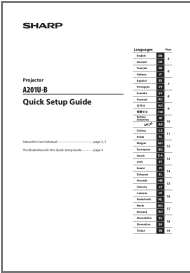
Ver. 1 9/24

Printed in China



\*TINS-0051VW01\*

Documents / Resources

A thumbnail image of a document titled "SHARP Projector A201U-B Quick Setup Guide". The document shows a list of steps for setting up the projector, numbered 1 through 10. The steps include: 1. Unpack the projector, 2. Connect the power cord, 3. Connect the video cable, 4. Connect the audio cable, 5. Connect the remote control, 6. Turn on the projector, 7. Adjust the screen, 8. Adjust the focus, 9. Adjust the keystone, and 10. Adjust the zoom.

[SHARP A201U-B Projector Specs](#) [pdf] User Guide  
A201U-B Projector Specs, A201U-B, Projector Specs, Specs

References

- [User Manual](#)

[Manuals+](#), [Privacy Policy](#)

This website is an independent publication and is neither affiliated with nor endorsed by any of the trademark owners. The "Bluetooth®" word mark and logos are registered trademarks owned by Bluetooth SIG, Inc. The "Wi-Fi®" word mark and logos are registered trademarks owned by the Wi-Fi Alliance. Any use of these marks on this website does not imply any affiliation with or endorsement.