



SHARKWARD ANT-4X-BLE Bluetooth Passive Infrared Sensor Instruction Manual

[Home](#) » [Sharkward](#) » SHARKWARD ANT-4X-BLE Bluetooth Passive Infrared Sensor Instruction Manual 

SHARKWARD ANT-4X-BLE Bluetooth Passive Infrared Sensor Instruction Manual



Contents

- [1 SPECIFICATION](#)
- [2 OVERVIEW](#)
- [3 FEATURES AND BENEFITS](#)
- [4 TECHNICAL DATA](#)
- [5 COVERAGE PATTERNS](#)
- [6 ORDERING INFORMATION](#)
- [7 Documents / Resources](#)
 - [7.1 References](#)
- [8 Related Posts](#)

SPECIFICATION

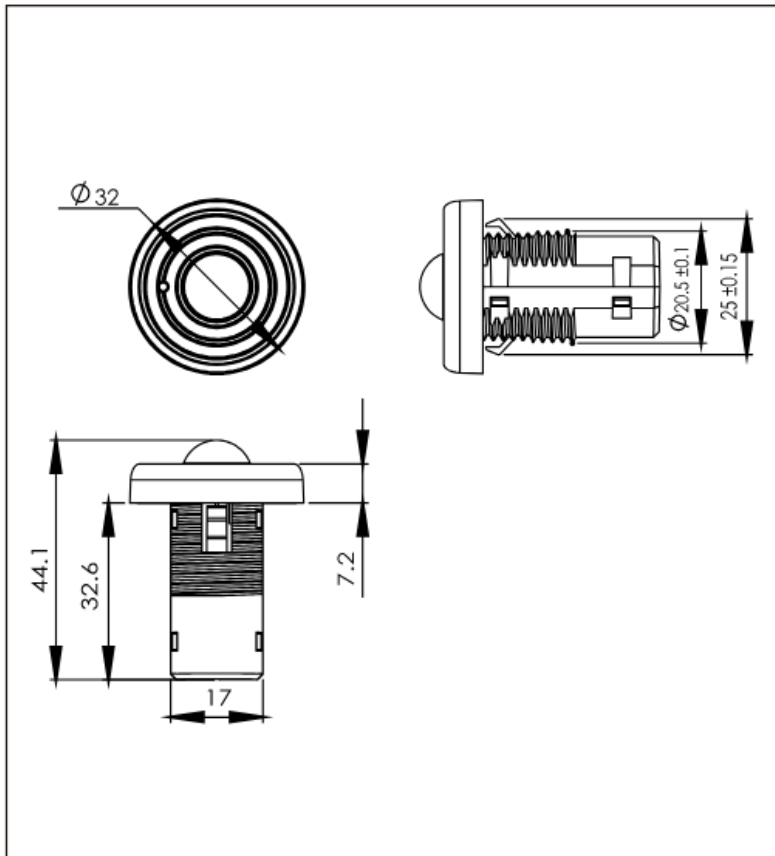
The ANT-4E-BLE-SR uses PIR motion detector architecture and passive infrared (PIR) technology for improved detection coverage for high bay applications.

OVERVIEW



- PIR sensor.
- ailight Harvesting
- Bluetooth SIG mesh.
- High-End Trim, Zoning, Continuous Bi-level Dimming.
- LED Motion indicator.
- Mounting height up to 12 ft.
- 360° coverage pattern.
- Low Voltage connector.
- Technology Partner SILVAIR

FEATURES AND BENEFITS



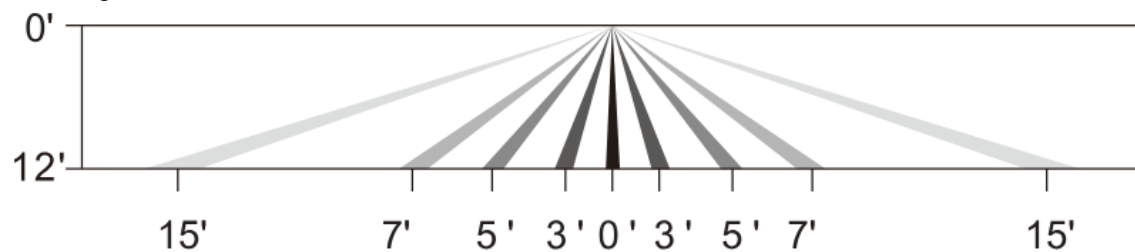
- Bluetooth to 0-10V signal converter, Bluetooth mesh network.
- Built-in 20mA 0-10V signal output.
- Mesh network, which has a much longer control distance, transmits received signals to neighboring devices.
- All devices on 0-10V line are broadcast controlled by mobile application.
- In typical outdoor environment, the typical range for wireless communication is 100ft(30m).
- Actual range is dependent on field installation.
- Available with Magnetic reset (Touch the top part of sensor for 5 seconds).
- On-board antenna

TECHNICAL DATA

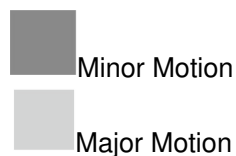
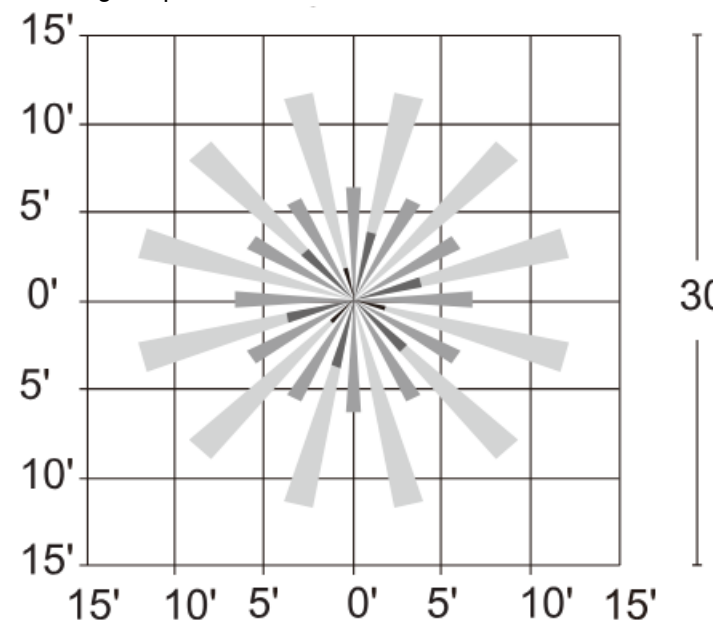
Motion Sensor	Passive infrared sensor
Input Power	10-14VDC,>50mA
Control Output	0-10V,max 25mA sinking current
Mounting height	12ft Max.
Detection angle	360°
Operating temperature	20°C-60°C
Max Bluetooth Range	100ft(30m)
Warranty	5years

COVERAGE PATTERNS

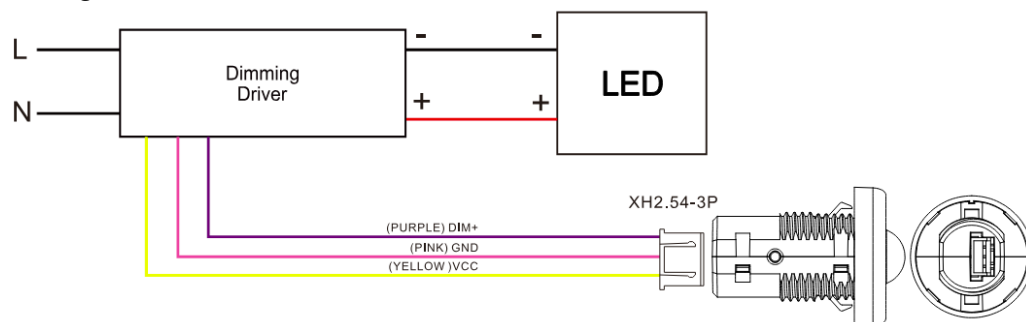
Coverage Side View



Coverage Top View



Wiring



ANT-4E-BLE-SR wiring with 10-14VDC wire dimming ballast or LED driver.

ORDERING INFORMATION

ANT-4E-BLE-SR Bluetooth Passive Infrared sensor

FCC STATEMENT

This device complies with Part 15 of the FCC Rules. Operation is subject to the following two conditions:

1. This device may not cause harmful interference.
2. This device must accept any interference received, including interference that may cause undesired operation.

This device complies with Part 15 of the FCC Rules. Operation is subject to the following two conditions: (1) this device may not cause harmful interference, and (2) this device must accept any interference received, including interference that may cause undesired operation.


Caution: The user is cautioned that changes or modifications not expressly approved by the party responsible for compliance could void the user's authority to operate the equipment.

Note: This equipment has been tested and found to comply with the limits for a Class B digital device, pursuant to part 15 of the FCC Rules. These limits are designed to provide reasonable protection against harmful interference in a residential installation. This equipment generates uses and can radiate radio frequency energy and, if not installed and used in accordance with the instructions, may cause harmful interference to radio communications. However, there is no guarantee that interference will not occur in a particular installation. If this equipment does cause harmful interference to radio or television reception, which can be determined by turning the equipment off and on, the user is encouraged to try to correct the interference by one or more of the following measures:

- Reorient or relocate the receiving antenna.
- Increase the separation between the equipment and receiver.
- Connect the equipment into an outlet on a circuit different from that to which the receiver is connected.



Documents / Resources

	<p>SHARKWARD ANT-4X-BLE Bluetooth Passive Infrared Sensor [pdf] Instruction Manual ANT-4X-BLE Bluetooth Passive Infrared Sensor, ANT-4X-BLE, Bluetooth Passive Infrared Sensor, Passive Infrared Sensor, Infrared Sensor, Sensor</p>
---	--

References

- [User Manual](#)

[Manuals+](#), [Privacy Policy](#)

This website is an independent publication and is neither affiliated with nor endorsed by any of the trademark owners. The "Bluetooth®" word mark and logos are registered trademarks owned by Bluetooth SIG, Inc. The "Wi-Fi®" word mark and logos are registered trademarks owned by the Wi-Fi Alliance. Any use of these marks on this website does not imply any affiliation with or endorsement.