



## Shark RV700\_N ION Robot Vacuum User Manual

[Home](#) » [Shark](#) » Shark RV700\_N ION Robot Vacuum User Manual 

### Contents

- [1 Shark RV700\\_N ION Robot Vacuum User Manual](#)
- [2 STEP 1: SET UP YOUR CHARGING DOCK](#)
- [3 STEP 2: INSTALL THE SIDE BRUSHES](#)
- [4 STEP 3: POWER-UP SHARK ION ROBOT](#)
- [5 STEP 4: PREP YOUR HOME FOR CLEANING](#)
- [6 STEP 5: SET YOUR ROBOT'S CLEANING SCHEDULE](#)
- [7 USING YOUR SHARK ION™ ROBOT NEAR STAIRS](#)
- [8 Download](#)
- [9 Related Posts](#)

**Shark RV700\_N ION Robot Vacuum User Manual**



## QUICK START GUIDE

### SHARK ION ROBOT

EASE OF A ROBOT. PERFORMANCE OF A SHARK.™

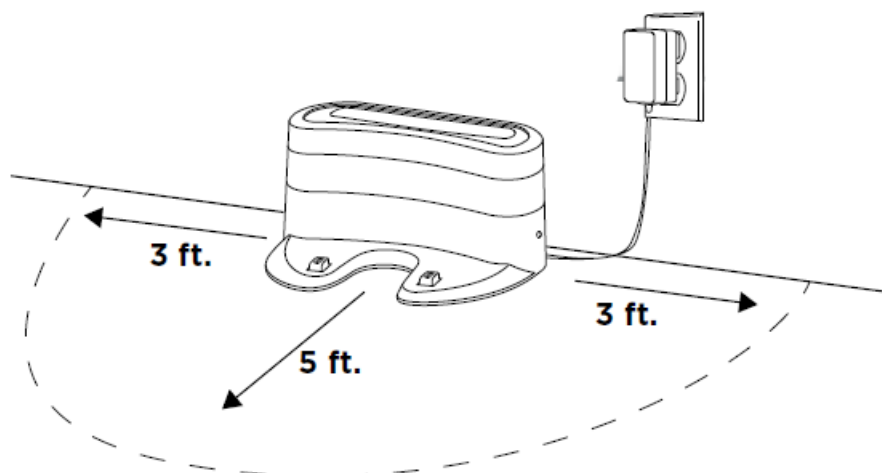
Please be sure to read the enclosed Shark® Owner's Guide prior to using your robot.

### CONGRATULATIONS ON YOUR NEW SHARK ION ROBOT

Getting Started is Easy – Follow These Simple Steps To Get Cleaning

#### STEP 1: SET UP YOUR CHARGING DOCK

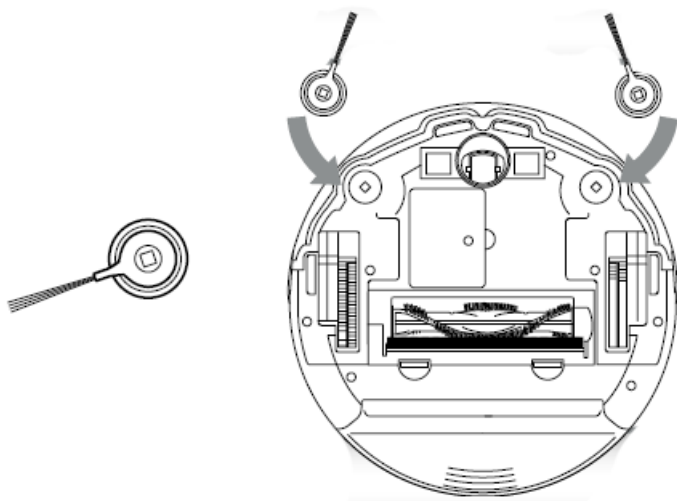
Place charging dock on a level surface with its back against a wall, in a space without obstructions, that can easily be accessed by your Shark ION Robot. Plug dock into a power outlet.



**NOTE:** Placing your dock in a central location with a wide view to your home will improve your robot's ability to return to the dock.

## STEP 2: INSTALL THE SIDE BRUSHES

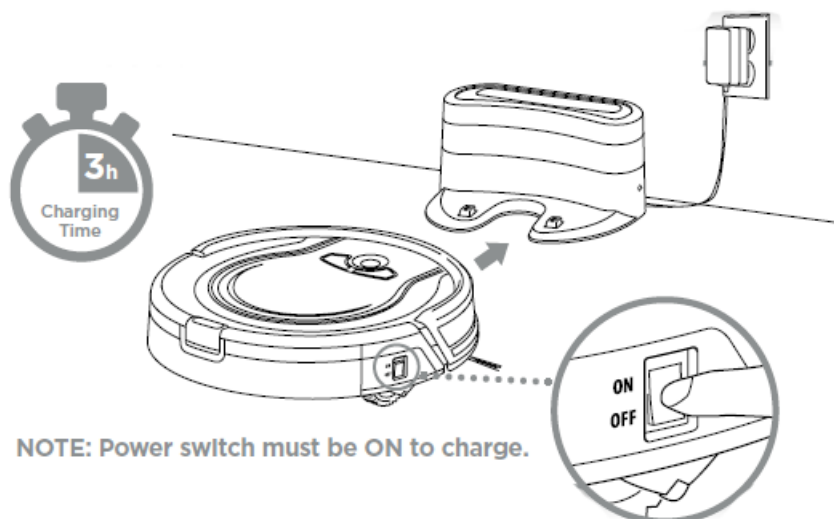
Snap the 2 included side brushes onto the posts on the bottom of the robot.



## STEP 3: POWER-UP SHARK ION ROBOT

Flip the Power switch located on the side of your Shark ION Robot to the ON position and place your robot on the dock.

When all 3 indicator lights are solid blue, your robot is fully charged. Simply press the Clean button to send your robot into action.



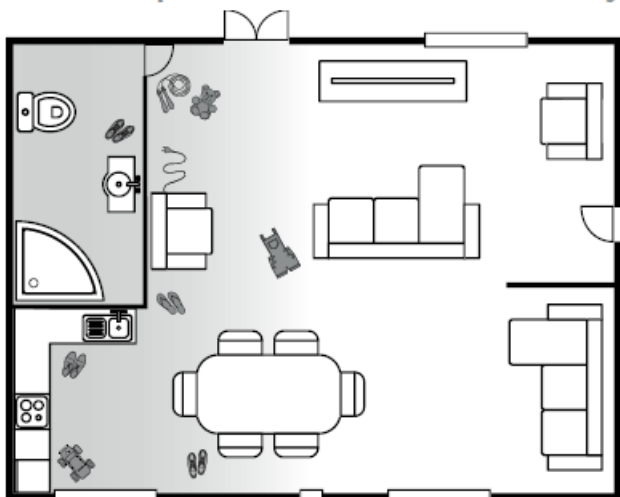
**NOTE:** Power switch must be ON to charge.

## STEP 4: PREP YOUR HOME FOR CLEANING

With Smart Sensor technology, your robot maneuvers around obstructions and navigates its way out of tight spaces as it cleans. To help your robot complete its mission, prep your floor by removing all obstacles, such as loose power cords, clothes, toys, and low-hanging drapes.

Use the included BotBoundary™ strips to easily block off obstacles or areas you don't want your robot to enter.

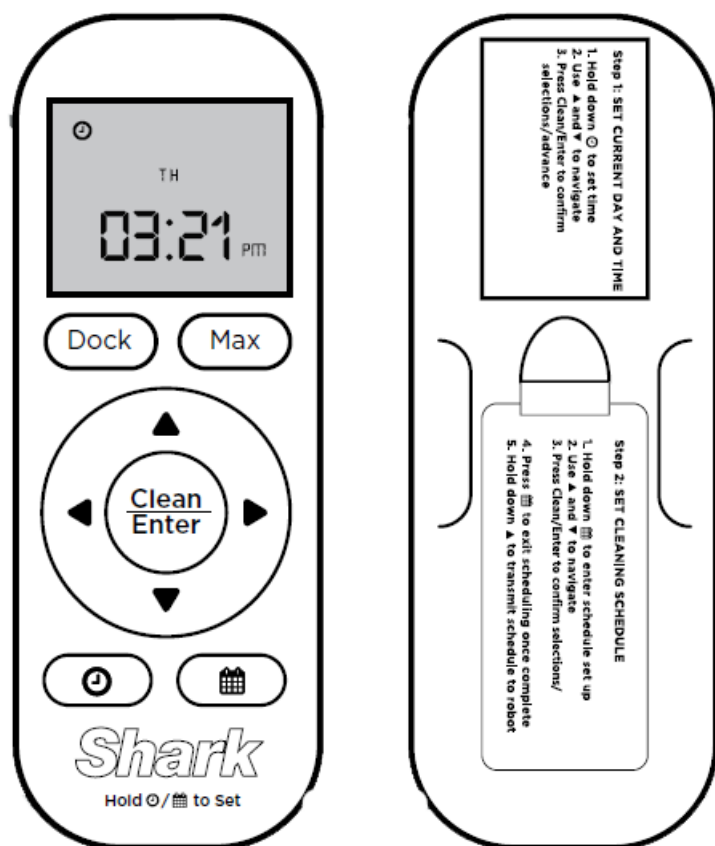
## Robot Traps Robot Friendly



See the BOTBOUNDARY USAGE GUIDE included with your BotBoundary strips for more information.  
See the TIPS AND TRICKS FOR GREAT PERFORMANCE GUIDE to discover how to get the best from your robot.

## STEP 5: SET YOUR ROBOT'S CLEANING SCHEDULE

Use the included remote to set a recurring cleaning schedule for your robot. Simple instructions are located on the back of your remote and in your Owner's Guide.

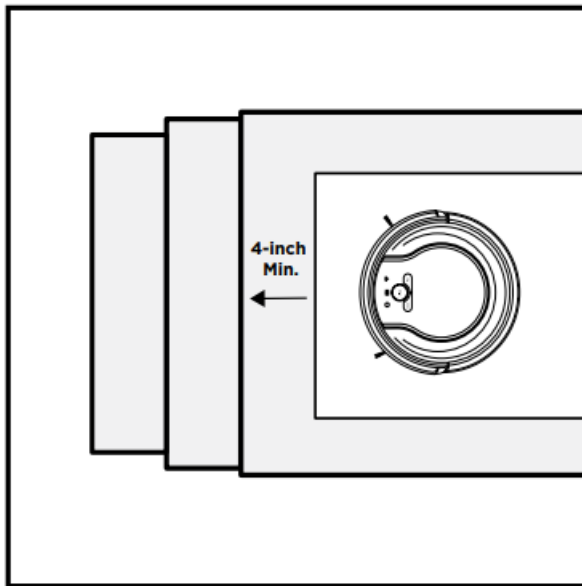


## USING YOUR SHARK ION™ ROBOT NEAR STAIRS

For your robot's cliff sensors to work properly, all runners, rugs, or carpets must be at least 4 inches from the top of

any stairs (or extend over the edge of the stairs.)

If a runner, rug, or carpet edge is less than 4 inches from the stairs and can't be moved, use a BotBoundary™ strip to block off the stairs.



For assistance, contact us at 800-798-7398 or visit us online at [sharkclean.com](https://sharkclean.com)  
Please be sure to read the enclosed Shark® Owner's Guide prior to using your unit.  
Don't forget to register your robot at [registeryourshark.com](https://registeryourshark.com)

©2018 SharkNinja Operating LLC. SHARK is a registered trademark of SharkNinja Operating LLC.  
BOTBOUNDARY, EASE OF A ROBOT. PERFORMANCE OF A SHARK, and SHARK ION are trademarks of SharkNinja Operating LLC.

---

## Download

Shark RV700\_N ION Robot Vacuum Quick Start Guide – [[Download PDF](#)]

Shark RV700\_NC ION Robot Vacuum Owner's Guide – [[Download PDF](#)]

Shark RV700\_N Series ION Robot Vacuum Owner's Guide – [[Download PDF](#)]

---