




## Shark LZ600 / QU600 Series APEX UpLight User Manual

[Home](#) » [Shark](#) » Shark LZ600 / QU600 Series APEX UpLight User Manual 

### Contents

- [1 Shark LZ600 / QU600 Series APEX UpLight User Manual](#)
- [2 WHAT'S INSIDE](#)
- [3 ASSEMBLY](#)
- [4 TIPS](#)
- [5 EMPTYING THE DUST CUP](#)
- [6 MAINTENANCE:](#)
- [7 BRUSHROLL MAINTENANCE](#)
  - [7.1 Brushroll access](#)
  - [7.2 Soft Roller](#)
- [8 VERSATILE FLOOR-TO-CEILING CLEANING](#)
  - [8.1 UPRIGHT](#)
  - [8.2 WAND WITH EXTENDED HOSE](#)
  - [8.3 ABOVE-FLOOR WITH WAND](#)
  - [8.4 LIFT-AWAY® POD WITH HOSE](#)
- [9 DOWNLOAD](#)
- [10 Related Posts](#)

**Shark LZ600 / QU600 Series APEX UpLight User Manual**



## **LZ600 Series QUICK START GUIDE**

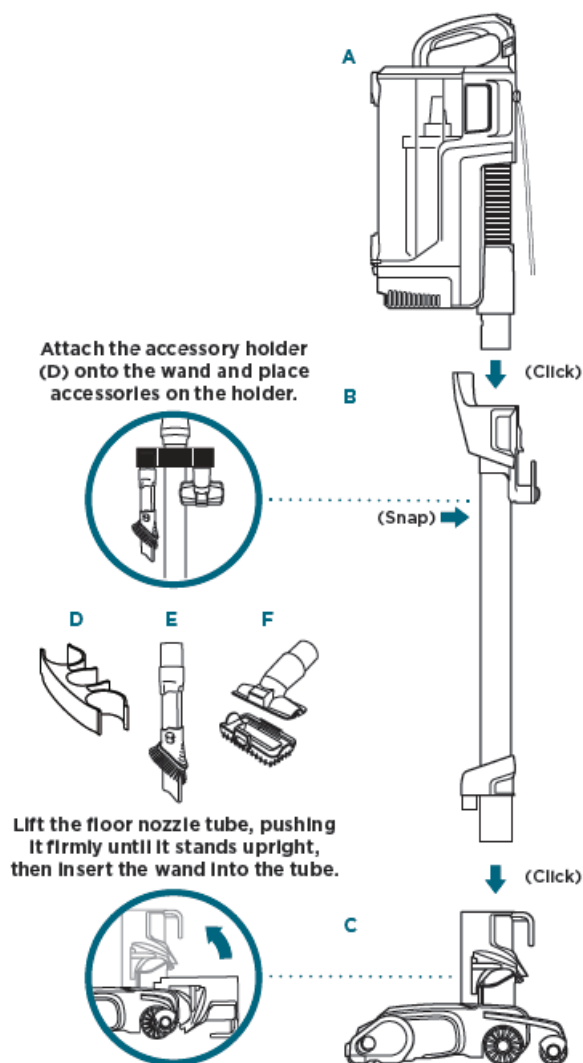
This article contains the Owner's Guide for the LZ600 / QU600 Series Shark® APEX® UpLight™. This article supports the following product SKUs LZ600, LZ601, LZ600C, LZ600W, LZ601C, LZ602, LZ602C, LZ602W, QU601QBK, QU601QBL, QU601QPR, QU602QBK, QU602QBL, QU602QBX, QU602QML, QU602QPK, QU602QPL, QU603QBK, QU603QBL, QU603QPK, and QU603QRW.

**[Please be sure to read the enclosed Shark® Owner's Guide prior to using your unit.]**

### **WHAT'S INSIDE**

- A. Lift-Away® Pod
- B. Wand
- C. Floor Nozzle
- D. Accessory Holder
- E. Duster Crevice Tool
- F. Pet Multi-Tool

### **ASSEMBLY**



**NOTE:** For proper operation, ensure all parts are firmly **CLICKED** into place.

## TIPS



When storing, wrap cord around cord hooks.  
For quick cord access, rotate upper hook down and remove cord.

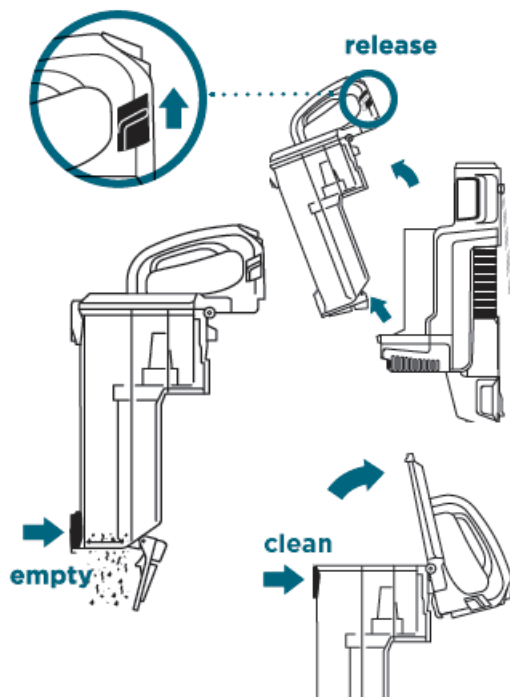


When the vacuum is placed in the upright position, the retractable wheels will extend so the vacuum can stand up

on its own.

## EMPTYING THE DUST CUP

Empty the dust cup after each use.



## MAINTENANCE:

Rinse pre-motor filters every month and HEPA filter once a year. Rinse with cold water only. Allow filters to air-dry completely before reinstalling.

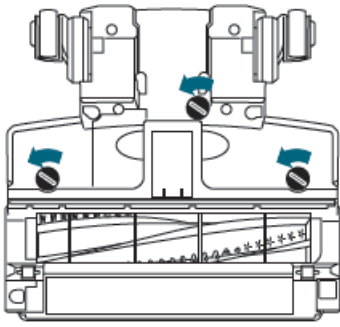
**See enclosed Owner's Guide for more information on how to clean and replace the filters.**

## BRUSHROLL MAINTENANCE

### Brushroll access

The self-cleaning brushroll automatically removes hair wrap. If some hair or debris remains after continued use, remove the cover to access the brushroll. Use a coin to turn the locks counterclockwise, then lift off the cover. Remove any debris or hair wrap and clear the debris intake.

To close, push down the cover until it clicks into place, then turn the locks clockwise.



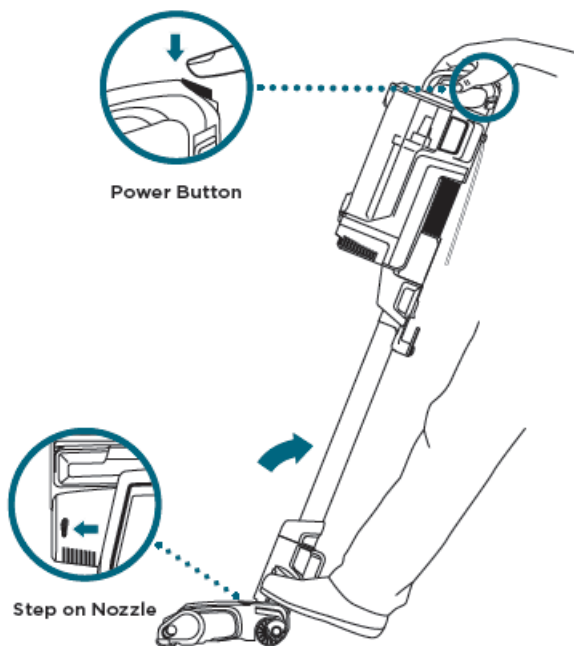
### Soft Roller

Slide the button on the floor nozzle to eject the Soft Roller. Tap off debris and wipe the roller clean with a dry towel.

## VERSATILE FLOOR-TO-CEILING CLEANING

### UPRIGHT

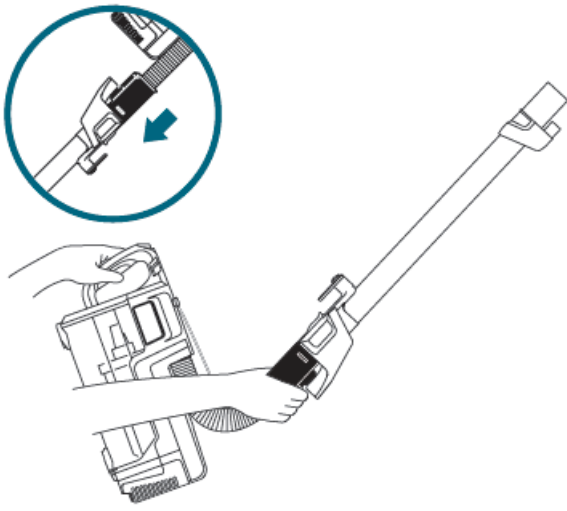
Step on the footprint icon on the floor nozzle and tilt the handle back, then press the power button on the back of the handle.



### WAND WITH EXTENDED HOSE

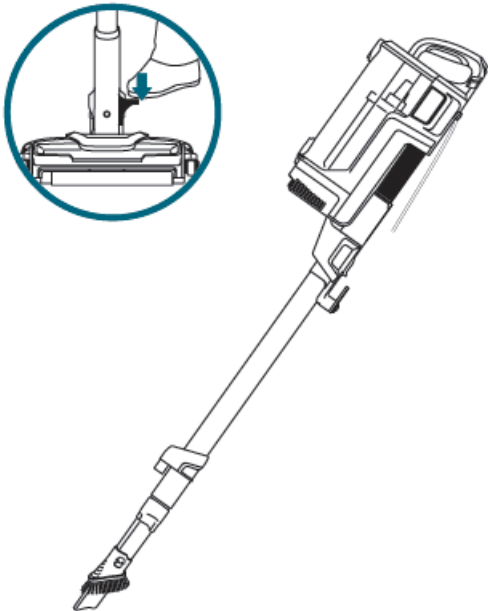
For even more flexibility with the wand, slide the hose cuff down to extend the integrated hose.

**NOTE:** When finished with the hose, slide the hose cuff back into place while reattaching the wand to the pod.



#### **ABOVE-FLOOR WITH WAND**

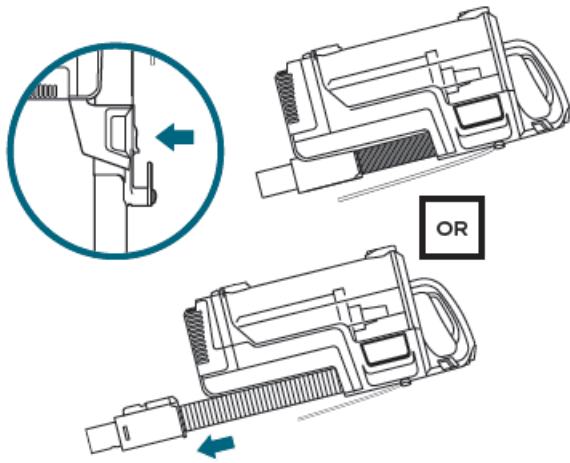
For more reach, detach the wand and add an accessory. Step on the wand release pedal and lift the handle.



#### **LIFT-AWAY® POD WITH HOSE**

To clean with the Lift-Away pod, detach it by pressing the Pod Release button. Attach an accessory for more reach. For added flexibility, slide the cuff down to extend the hose. To reattach the hose, slide the hose cuff back into place.

**NOTE:** During reassembly, ensure the hose is clicked securely into place before attaching the wand.



For additional parts and accessories, visit [sharkaccessories.com](https://sharkaccessories.com)

For questions or to register your product, visit us online at [sharkclean.com](https://sharkclean.com)

---

## DOWNLOAD

### Shark LZ600 / QU600 Series APEX UpLight:

Quick Start Guide – [[Download PDF](#)]

Owner's Guide – [[Download PDF](#)]

---