



Shark IQ Robot Sharkclean App and Robot User Manual

[Home](#) » [Shark](#) » Shark IQ Robot Sharkclean App and Robot User Manual 

Contents

1 QUICK START GUIDE

1.1 To stay current on our latest updates and features, [DOWNLOAD THE SHARKCLEAN™ APP](#). Search “SharkClean” in the app store.

1.2 OPTIMIZING YOUR HOME FOR CLEANING

1.3 WHAT TO EXPECT

1.4 Read More About This Manual & Download PDF:

2 Related Posts

Shark IQ ROBOT

SELF-EMPTY XL

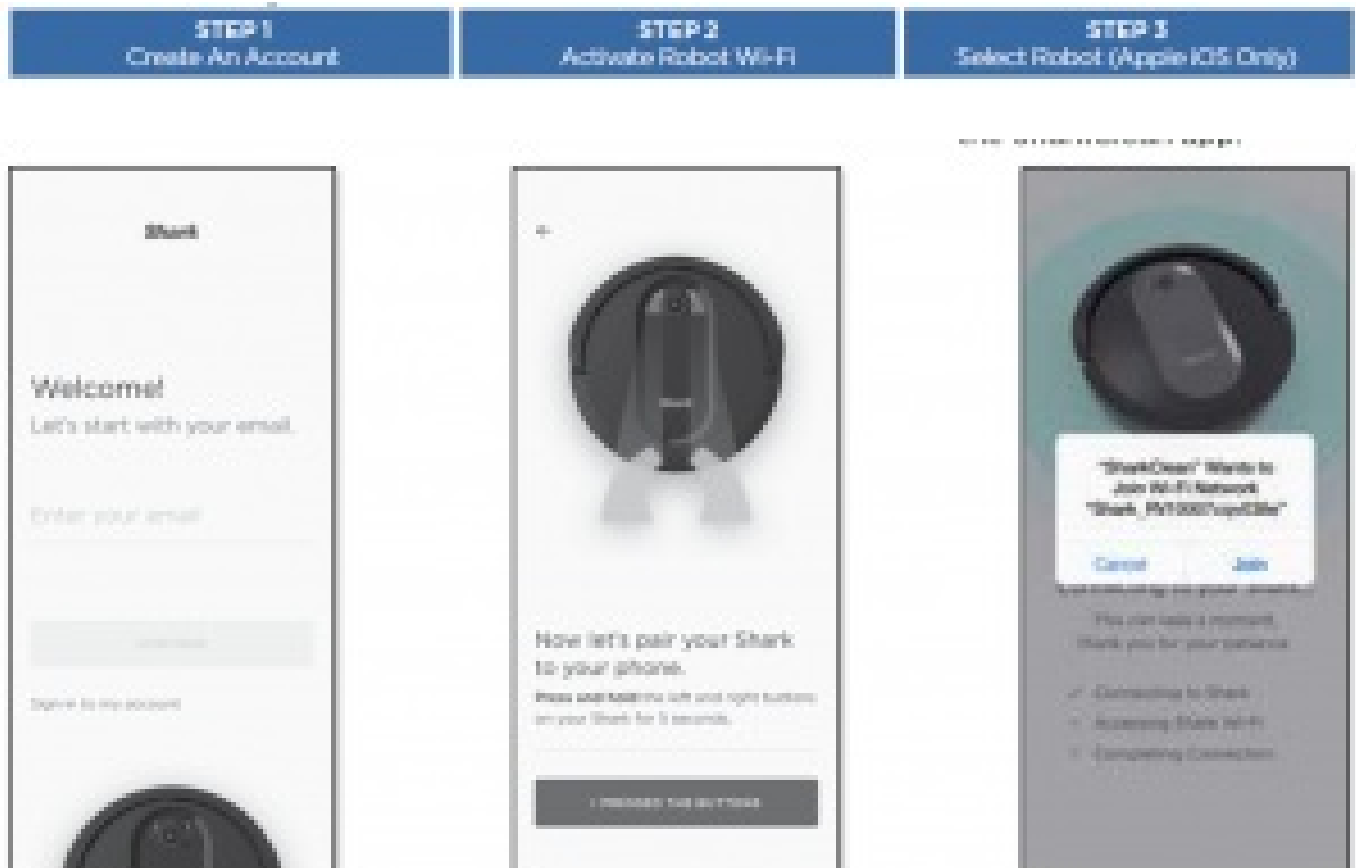
[QUICK START GUIDE](#)

To stay current on our latest updates and features,
DOWNLOAD THE SHARKCLEAN™ APP.
Search “SharkClean” in the app store.



CONNECTING THE SHARKCLEAN™ APP AND ROBOT

Search SharkClean in the app store
and download to get started.



- Open the SharkClean app and set up your account.
- Hold down Dock and Clean buttons simultaneously until your Shark prompts

you with audio, and Wi-Fi

light () on robot blinks

- Exit the app and open Wi-Fi settings.
- Select your robot (Ex. Shark_RVXXX) from the menu.
- Exit settings and return to the SharkClean app.

STEP 4 Connect To Home Wi-Fi	STEP 5 Success!	WI-FI TROUBLESHOOTING
--	---------------------------	------------------------------

- Select your home Wi-Fi network and enter your password.
NOTE: Most networks are 2.4 GHz. The app will not work on 5 GHz network.

- When pairing is complete, the Success screen will appear

- CAN'T CONNECT?

Restart your phone

- Turn off phone, wait a few minutes, then turn it back on and connect to Wi-Fi.

Reboot your robot

- Make sure the power switch on the back of the BASE is in the ON position.

- Press the power switch on the side of the robot to the OFF position.

Wait 10 seconds, then press it to

the (I) ON position.

Reboot your router

- Unplug the router power cable for 30 seconds, then plug it back in. Allow several minutes for your router to reboot completely.

- Two Easy Steps If You're Stuck:

Having trouble connecting to your robot? Call 1-888-228-5531 for robot support.

For additional help, visit: sharkclean.com/support

- How-to Videos
- FAQs
- Troubleshooting
- Tips & Tricks

Smart Home Setup

To set up voice control using Google Home or Amazon Alexa, visit sharkclean.com/app for instructions.

CAN'T CONNECT?

Restart your phone

- Turn off phone, wait a few minutes, then turn it back on and connect to Wi-Fi.

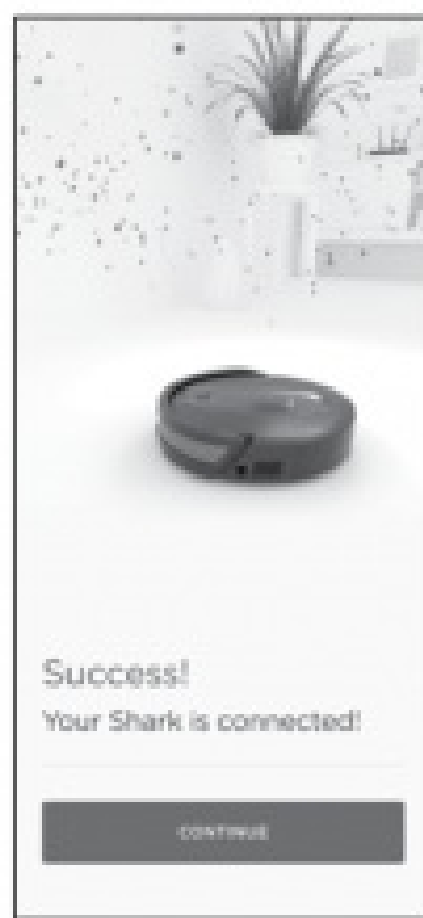
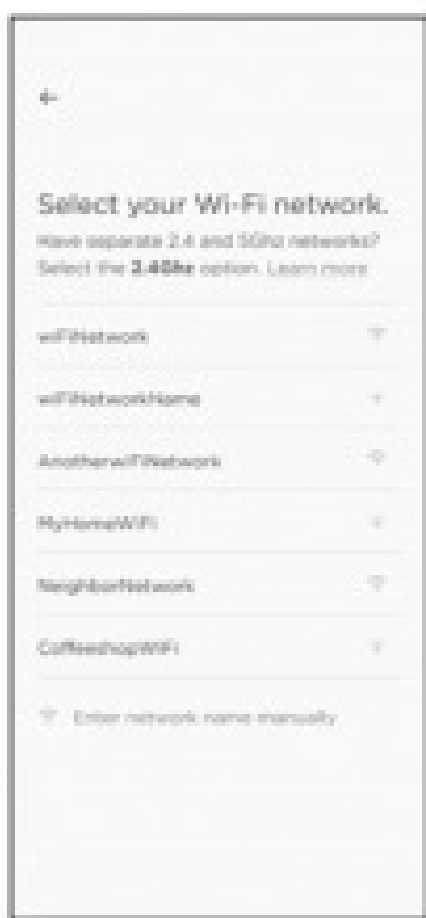
Reboot your robot

- Make sure the power switch on the back of the BASE is in the ON position.
- Press the power switch on the side of the robot to the OFF position.

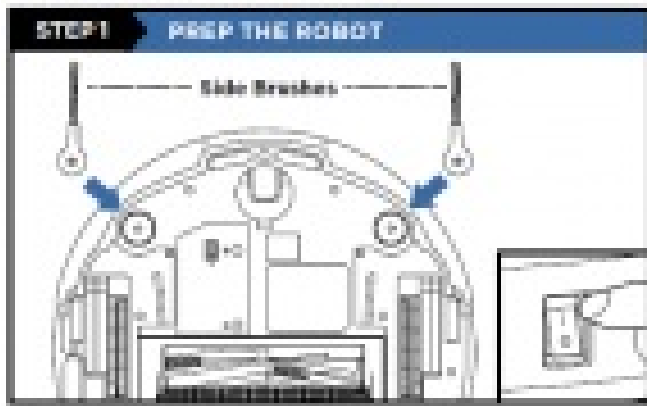
Wait 10 seconds, then press it to the (I) ON position.

Reboot your router

- Unplug the router power cable for 30 seconds, then plug it back in. Allow

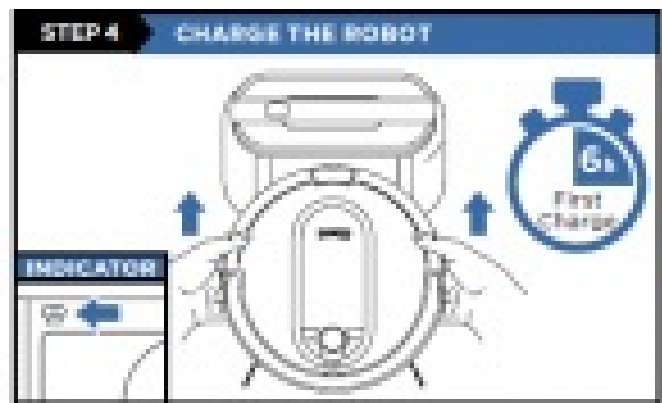


SETUP



- Remove protective film from robot and base.
- Attach the side brushes to the posts on the bottom of the robot. The side brushes are located in the red packaging.
- Turn on the power by pressing the button on the side of the robot to the (I) ON position

Find a permanent location for the base. Place it with its back against a wall, in an area with a good Wi-Fi signal. Remove any objects that are closer than 3 ft. from either side of the base, or closer than 5 ft. from the front. For best results, set up base on bare floor, or on the SharkMat



- Plug the base power cord into an electrical outlet.
- Turn the power switch on the back of the base to the (I) ON position.

The green power indicator light on the base will illuminate when the base has power.

To charge, place robot with its BACK side against base.

- Turn power switches on BOTH robot and base to (I) ON position.
- When charging begins, robot will beep and BLUE charging indicator light on base will PULSE. When robot is fully

charged, light will turn SOLID blue.

NOTE: Every time the robot returns to the dock, it will make a loud noise as it empties debris. This is normal and no cause for

OPTIMIZING YOUR HOME FOR CLEANING



Clear cords and remove small objects like toys, clothing, or drapes from floors. Open interior doors in rooms you want your robot to clean. For best results, run your robot in well-lit conditions.

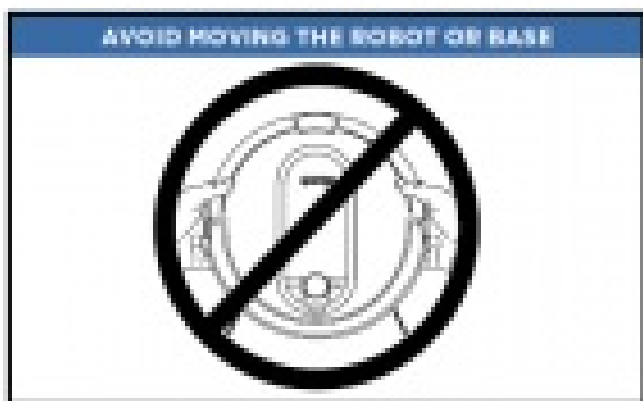
WHAT TO EXPECT

As your robot learns your home, you may need to make some small adjustments to optimize performance



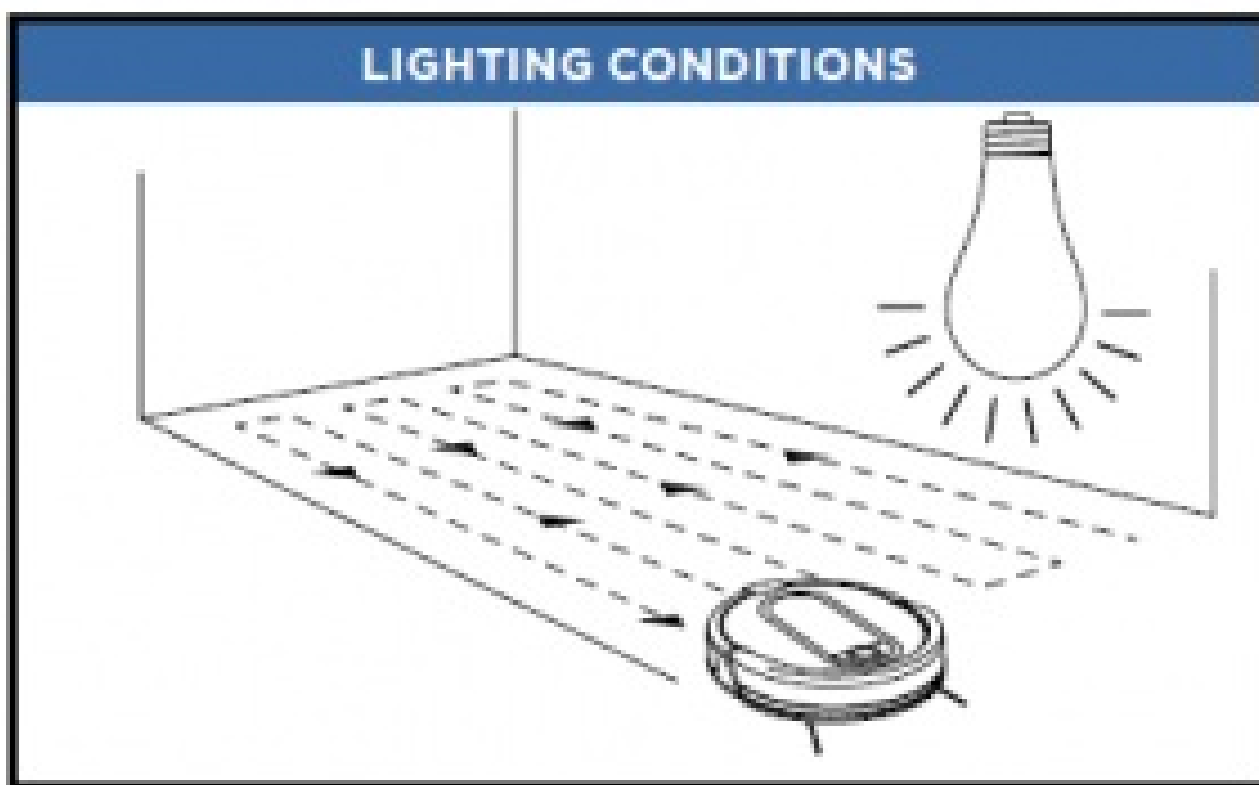
It will take you robot multiple runs to generate your interactive map, so run it frequently to get the best map.

For a constant state of clean™, set up a cleaning schedule in the app.



While your robot is cleaning, do not pick it up and move it, or move the charging base—this will impact the robot's ability to map your home.

During the first few weeks, your robot will empty more often than usual. Check the fill level regularly. Home environments vary, and the bin may fill up quicker in some homes.



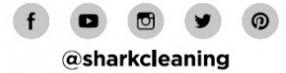
For best results, run your robot in well-lit conditions. If you run your robot at night, keep the lights on in the areas to be cleaned.

SharkNinja Operating LLC.

APPLE, the Apple logo, and iPhone are trademarks of Apple Inc., registered in the U.S. and other countries. APP STORE is a service mark of

Apple Inc., registered in the U.S. and other countries. GOOGLE, GOOGLE ASSISTANT, GOOGLE PLAY, the Google Play logo, and Android are trademarks of GOOGLE LLC.

AV1010AE_QSG_E_REV_Mv2



Read More About This Manual & Download PDF:

Shark IQ Robot Sharkclean App and Robot User Manual – [Optimized PDF](#)

Shark IQ Robot Sharkclean App and Robot User Manual – [Original PDF](#)