



Shark AV1010AE IQ Robot Vacuum with Self-Empty Base User Manual

[Home](#) » [Shark](#) » Shark AV1010AE IQ Robot Vacuum with Self-Empty Base User Manual 

Contents

- [1 Shark AV1010AE IQ Robot Vacuum with Self-Empty Base User Manual](#)
- [2 DOWNLOAD THE SHARKCLEAN™ APP](#)
- [3 SETUP](#)
- [4 OPTIMIZING YOUR HOME FOR CLEANING](#)
- [5 CONNECTING THE SHARKCLEAN™ APP AND ROBOT](#)
- [6 Questions?](#)
- [7 WHAT TO EXPECT](#)
- [8 Download](#)
- [9 Related Posts](#)

Shark AV1010AE IQ Robot Vacuum with Self-Empty Base User Manual



QUICK START GUIDE

DOWNLOAD THE SHARKCLEAN™ APP

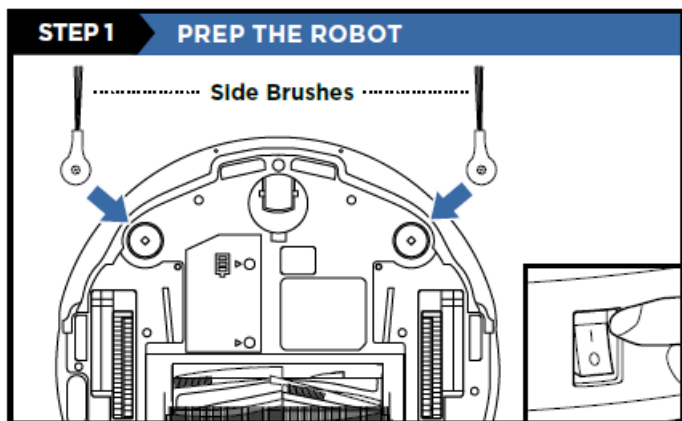
To stay current on our latest updates and features, DOWNLOAD THE SHARKCLEAN™ APP. Search “SharkClean” in the app store.



“Scan QR code with your phone’s camera to quickly find and download the app”

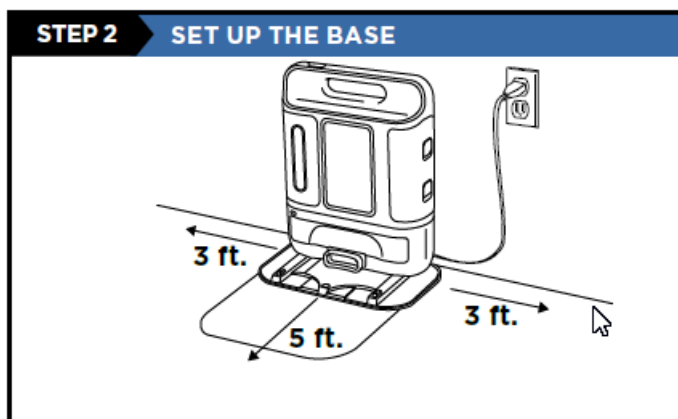
SETUP

STEP 1: PREP THE ROBOT



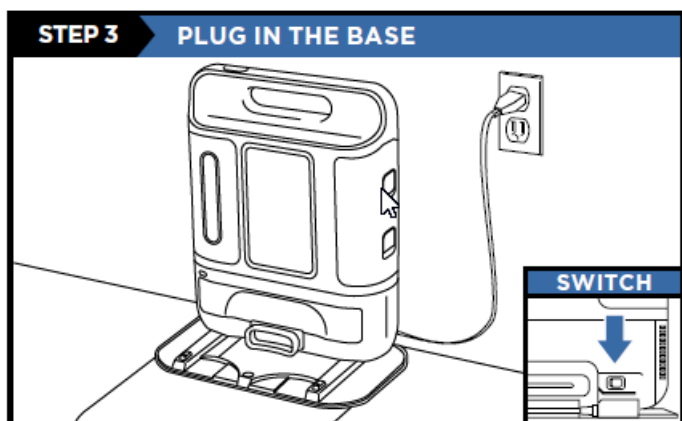
- Remove protective film from robot and base.
- Attach side brushes located in the red packaging.
- The power button on the side of the robot must be in the (I) ON position.

STEP 2: SET UP THE BASE



Find a permanent location for the base. Place it with its back against a wall, in an area with a good Wi-Fi signal. Remove any objects that are closer than 3 ft. from either side of the base, or closer than 5 ft. from the front. For best results, set up base on hard floor.

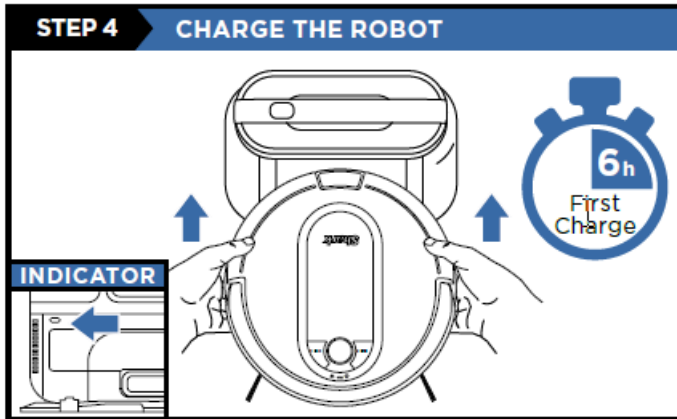
STEP 3: PLUG IN THE BASE



- Plug cord into electrical outlet.

- Make sure the power switch on the back of the dock is in the ON position.
The Indicator Light will illuminate green when base has power.

STEP 4: CHARGE THE ROBOT

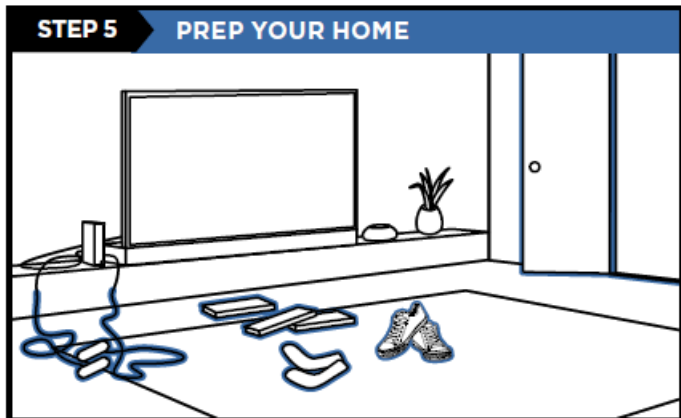


Place robot on base to charge for 6 hours. Power button must be in the (I) ON position and the robot must be aligned correctly, with its BACK side against the base. When charging begins, the robot will BEEP and the DOCK light will turn BLUE.

NOTE: Every time the robot returns to the dock, it will make a loud noise as it empties debris. This is normal and no cause for concern.

OPTIMIZING YOUR HOME FOR CLEANING

STEP 5: PREP YOUR HOME



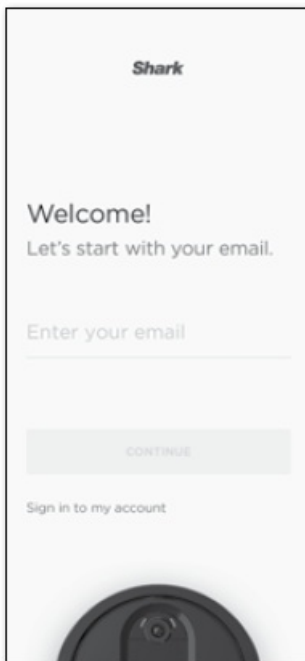
Clear cords and remove small objects like toys, clothing, or drapes from floors. Open interior doors in rooms you want your robot to clean.

CONNECTING THE SHARKCLEAN™ APP AND ROBOT


Search SharkClean in the app store and download to get started.

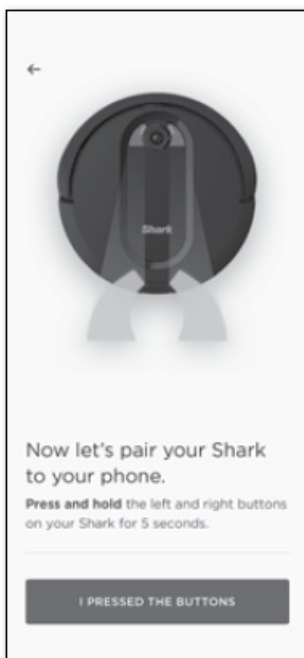
STEP 1: Create An Account

- Open the SharkClean app and set up your account.



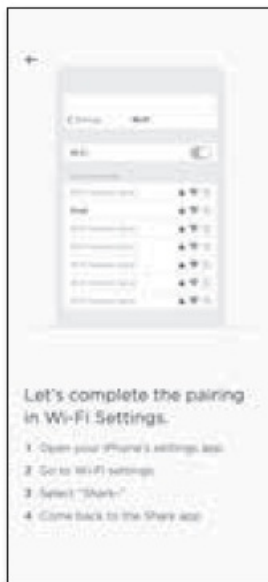
STEP 2: Activate Robot Wi-Fi

- Hold down Dock and Clean buttons simultaneously until your Shark prompts you with audio, and Wi-Fi light () on robot blinks



STEP 3: Select Robot (Apple iOS Only)

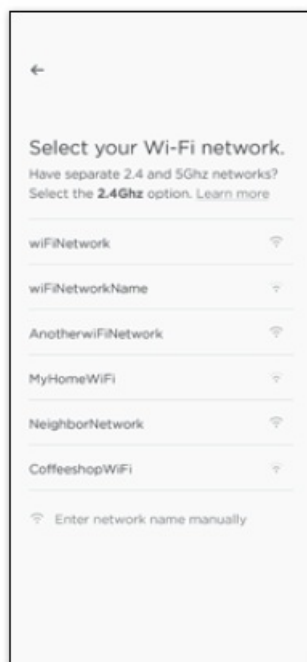
- Exit the app and open Wi-Fi settings.
- Select your robot (Ex. Shark_ RVXXX) from the menu.
- Exit settings and return to the SharkClean app.



STEP 4: Connect To Home Wi-Fi

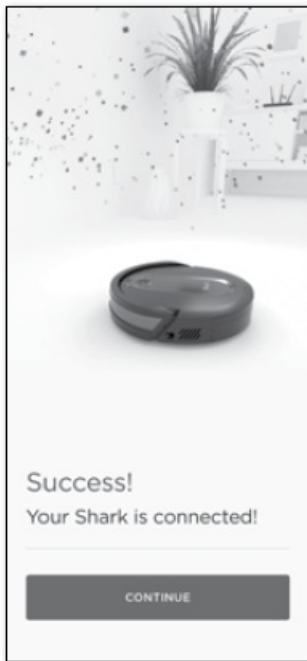
- Select your home Wi-Fi network and enter your password.

NOTE: Most networks are 2.4 GHz. The app will not work on 5 GHz network.



STEP 5: Success!

When pairing is complete, the Success screen will appear.



Questions?

CAN'T CONNECT?

Restart your phone Reboot your robot

- Make sure the power switch on the back of the BASE is in the ON position.
- Press the power button on the side of the ROBOT to the OFF position for 10 seconds, then press it again to turn power back ON.

Reboot your router

- Unplug the router power cable for 30 seconds, then plug it back in. Allow several minutes for your router to reboot completely.

Two Easy Steps If You're Stuck:

Having trouble connecting to your robot? Call 1-888-228-5531 for robot support.

For additional help, visit: sharkclean.com/support

- How-to Videos
- FAQs
- Troubleshooting
- Tips & Tricks

Smart Home Setup

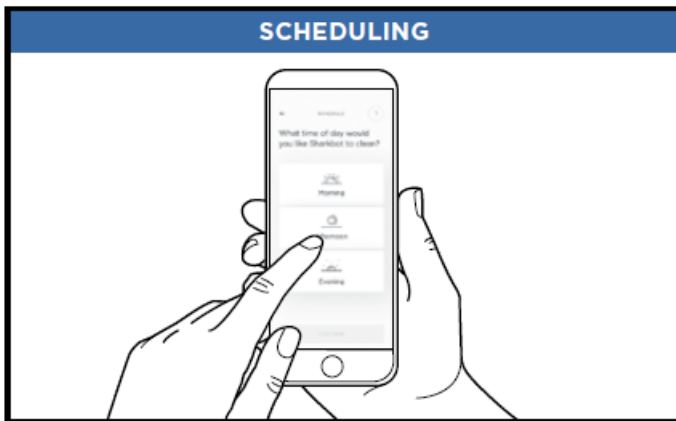
To set up voice control using

Google Home or Amazon Alexa, visit sharkclean.com/app for instructions.

WHAT TO EXPECT

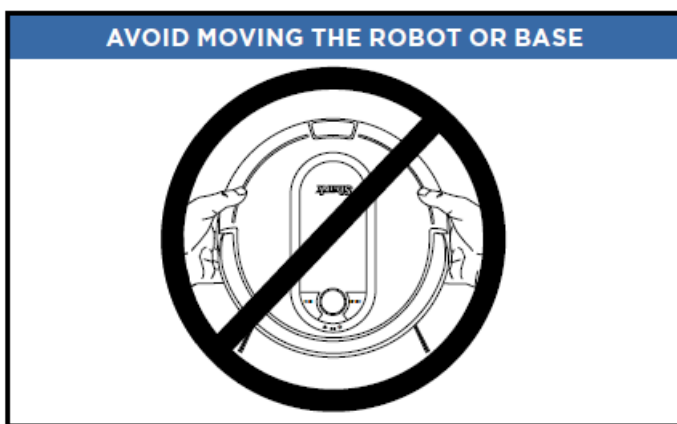
As your robot learns your home, you may need to make some small adjustments to optimize performance

SCHEDULING



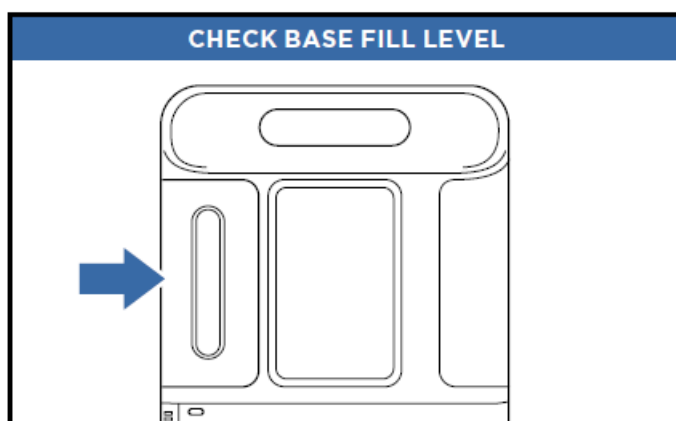
For a constant state of clean, set up a cleaning schedule in the app.

AVOID MOVING THE ROBOT OR BASE



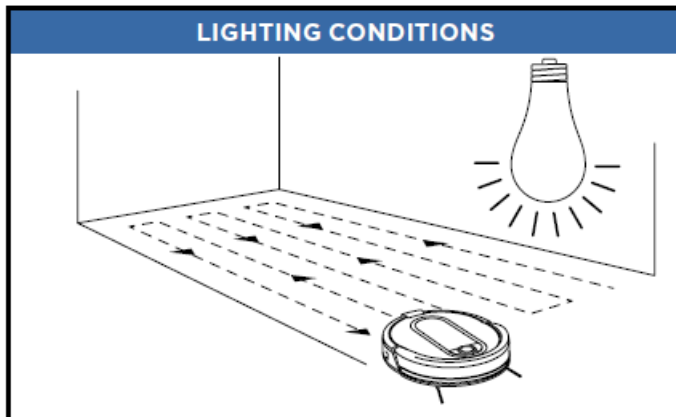
While your robot is cleaning, do not pick it up and move it, or move the charging base—this could impact the robot's ability to map your home.

CHECK BASE FILL LEVEL



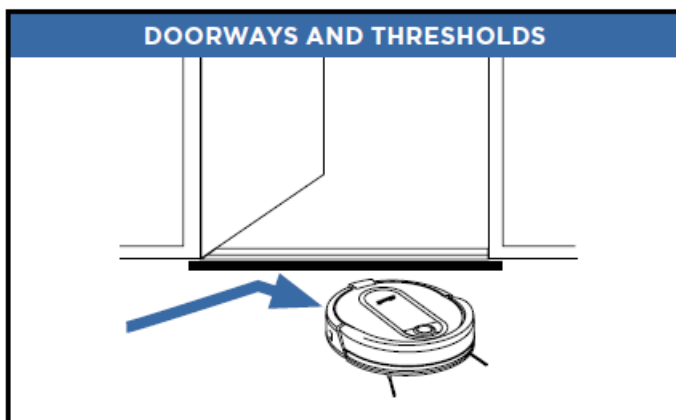
During the first few weeks, your robot will empty more often than usual. Check the fill level regularly. Home environments vary, and the bin may fill up quicker in some homes.

LIGHTING CONDITIONS



For best results, run your robot in well-lit conditions. If you run your robot at night, keep the lights on in the areas to be cleaned.

DOORWAYS AND THRESHOLDS



Your robot can easily climb over most thresholds, but if one is higher than $\frac{7}{8}$ ths of an inch, block it off with a BotBoundary® strip.

© 2020 SharkNinja Operating LLC. BOTBOUNDARY, SHARK, and SHARK IQ ROBOT are registered trademarks of SharkNinja Operating LLC. CONSTANT STATE OF CLEAN, SHARKCLEAN, and SHARK IQ ROBOT SELF-EMPTY are trademarks of SharkNinja Operating LLC. APPLE, the Apple logo, and iPhone are trademarks of Apple Inc., registered in the U.S. and other countries. APP STORE is a service mark of Apple Inc., registered in the U.S. and other countries. GOOGLE, GOOGLE ASSISTANT, GOOGLE PLAY, the Google Play logo, and Android are trademarks of GOOGLE LLC.

AV1010AE_QSG_E_MP_Mv1

Shark AV1010AE IQ Robot Vacuum with Self-Empty Base:

Quick Start Guide – [[Download PDF](#)]

Manuals+.