



Shark RV2502AE Wifi Connected Robot Vacuum Cleaner Installation Guide

[Home](#) » [Shark](#) » Shark RV2502AE Wifi Connected Robot Vacuum Cleaner Installation Guide

Contents [[hide](#)]

- [1 Shark RV2502AE Wifi Connected Robot Vacuum Cleaner](#)
- [2 SETUP](#)
- [3 LIVING WITH YOUR ROBOT](#)
- [4 TROUBLESHOOTING](#)
- [5 Documents / Resources](#)
- [6 Related Posts](#)

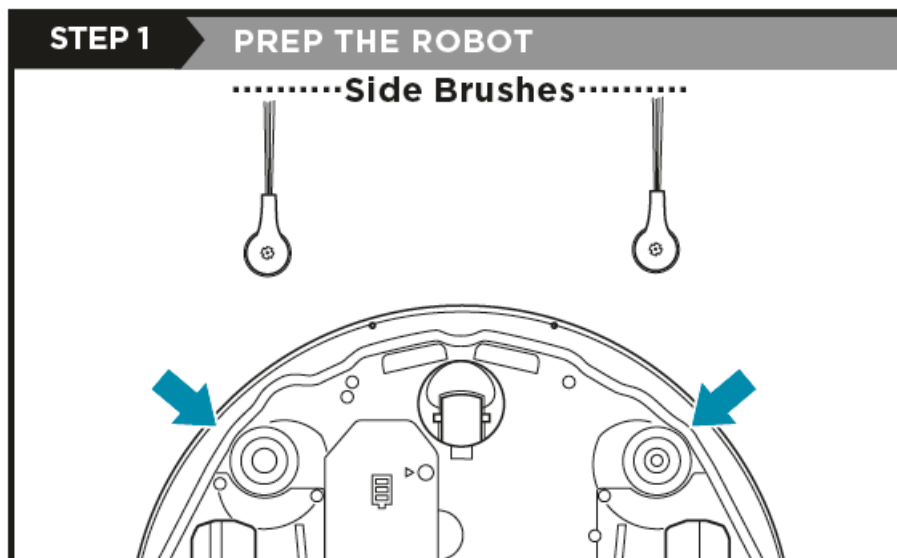
Shark®

Shark RV2502AE Wifi Connected Robot Vacuum Cleaner



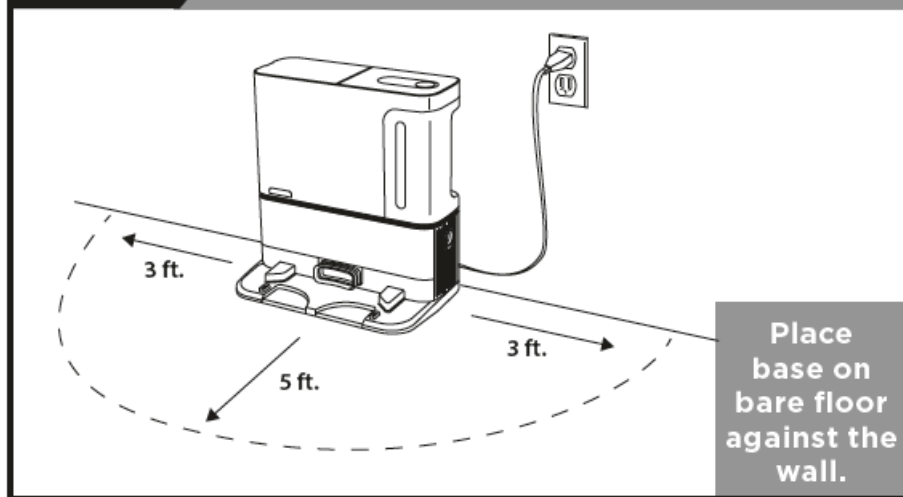
SETUP

- Remove protective film from robot and base.
- Attach the side brushes to the posts on the bottom of the robot.

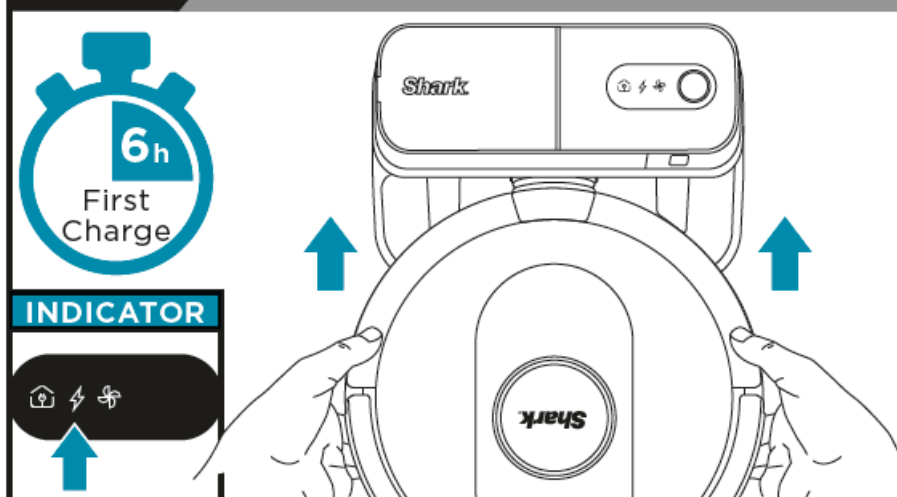


STEP 2

- Find a permanent location for the base in a central area with a strong Wi-Fi signal.
- Remove any objects that are closer than 3 ft. from either side of the base, or closer than 5 ft. from the front.
- Plug in the base. The Base Power Indicator Icon on the top right side of the base will illuminate when the base has power. Make sure the power switch on the back of the base is in the (I) ON position.

STEP 2**SET UP THE SELF-EMPTY BASE****STEP 3**

- Place robot on base to charge for 6 hours.
- When the robot is properly aligned with its BACK against the base, the Charging Icon on the top right side of the base will illuminate and the Battery icon on the robot will illuminate.
- Make sure the robot is properly aligned on the base.
- TO TURN ON ROBOT: Place robot on base or press and hold the CLEAN button for 5 to 7 seconds until the indicator lights turn on.

STEP 3**CHARGING YOUR ROBOT****STEP 4**

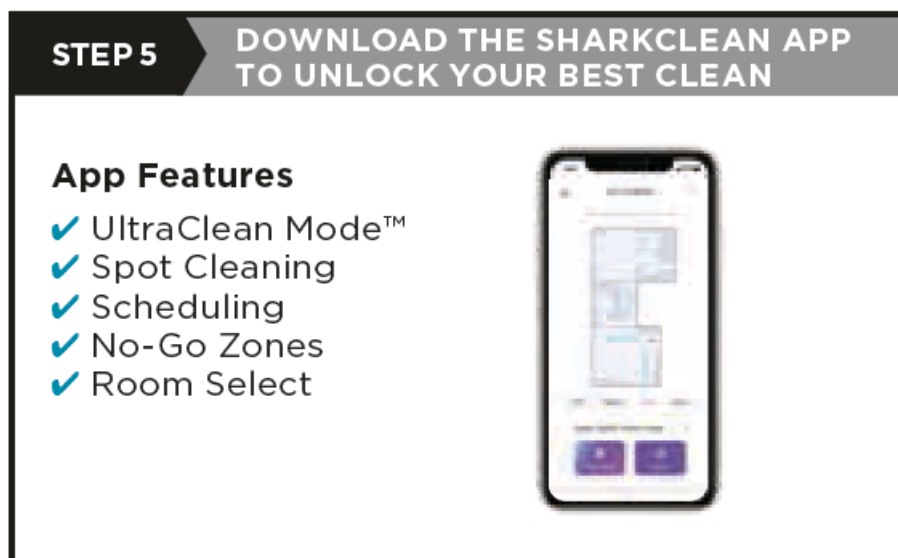
- Before cleaning, clear cords and remove small obstacles like clothing or toys that are less than 3.5" tall.
- Open interior doors in rooms you want your robot



STEP 5

App Features

- UltraClean Mode™
- Spot Cleaning
- Scheduling
- No-Go Zones
- Room Select

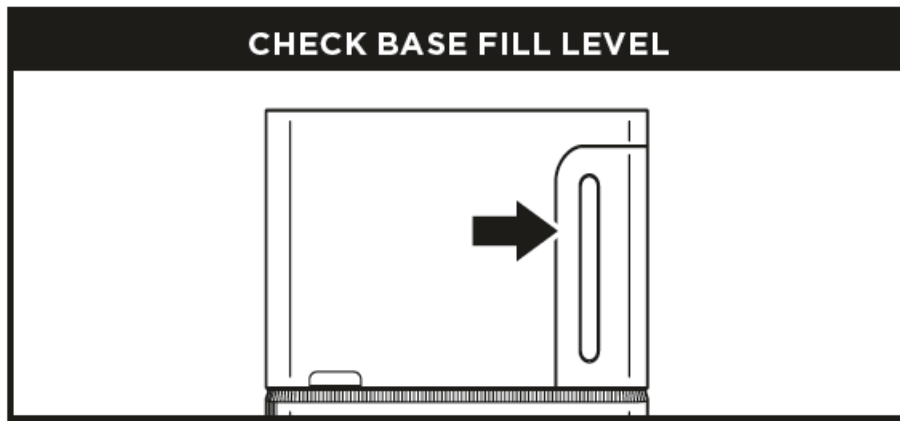


NOTE: For more information on connecting your robot, see back page.

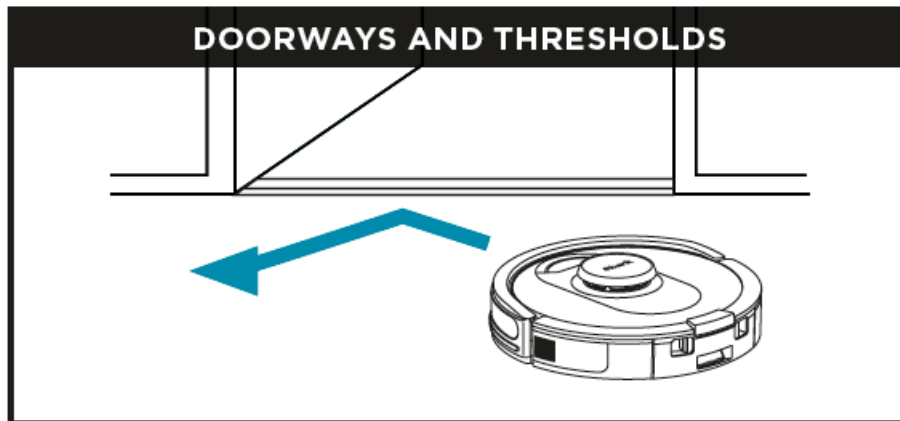
LIVING WITH YOUR ROBOT

Questions? For how-to videos, FAQs, troubleshooting, and tips & tricks, call 1-888-228-5531 for robot support or visit: sharkclean.com/AIRobotSE

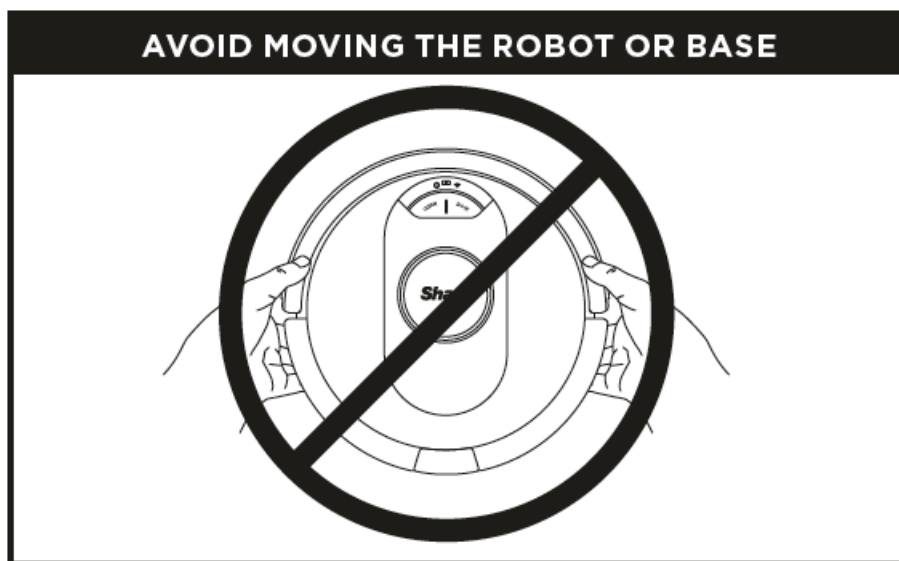
The dust bin is designed to hold up to 60 days of debris. During initial use, you may have to empty it more frequently while the robot finds more debris than usual. Check the fill level regularly to know when to empty.



Your robot can easily climb over most thresholds, but if one is higher than 0.75", set up a no-go zone in the app to block it off.



While your robot is cleaning, DO NOT pick it up and move it, or move the charging base—this will impact the robot's ability to map your home.



- **Restart your phone**
 - Turn off phone, wait a few minutes, then turn it back on and connect to Wi-Fi.
- **Reboot your robot**
 - Make sure the power switch on the back of the base is in the ON position.
 - Take robot off base and press and hold down the CLEAN button on the robot for 12 seconds. Turn your robot back on by placing it on the base.
- **Reboot your router**
 - Unplug the router power cable for 30 seconds, then plug it back in. Allow several minutes for your router to reboot completely.

CAN'T CONNECT TO WI-FI?



TROUBLESHOOTING

ERROR CODE	ERROR #	SOLUTION
CLEAN (RED) + ! (RED) alternating or CLEAN (WHITE) + ! (RED) flashing	2	Blockage in brushroll. Remove any debris from around and inside the brushroll so that it can spin freely.
DOCK (RED) + ! (RED) flashing	2	Side brush is stuck. Remove any debris from around the side brushes so they move freely.
CLEAN (RED) + DOCK (RED) + ! (RED) flashing	2	A drive wheel is stuck. Clean the wheels and remove any debris wrapped around the axles so they can move freely.
DOCK (RED) flashing	6	Front bumper may be jammed. Clean the bumper and make sure it moves in and out freely.
CLEAN (RED) + DOCK (WHITE) flashing	7	Cliff sensor error. Move your robot to a new location and clean its cliff sensors.
CLEAN (RED) flashing	10	Robot may be stuck on an obstacle. Move robot to a new location on a level surface.

ERROR CODE	ERROR #	SOLUTION
BATTERY ICON (RED) flashing	24	Battery is critically low and needs recharging. Please pick up your robot and place it on the base. Make sure the charging indicator on the top right side of the base is illuminated to confirm your robot is placed on the base correctly.
DOCK (RED) FLASHING + ! (RED) solid	26	Blockage in dust bin. Check base and robot dust bin for clogs. Clear any debris and reinstall the dust bin, ensuring that it clicks into place.

To minimize the risk of the robot traveling beyond an unsafe boundary (stair/cliffs edges, fireplaces, water hazards), establish these areas as “no-go zones” using the mapping feature in the SharkClean™ mobile app. Upon setting the boundary, run the vacuum and visually confirm that the settings effectively prevent the robot from passing beyond the set boundary. Adjust settings as necessary.

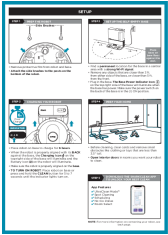
DO NOT put hands into any opening in the dock or robot.

© 2021 SharkNinja Operating LLC. SHARK is a registered trademark of SharkNinja Operating LLC.

SHARKCLEAN and ULTRACLEAN MODE are trademarks of SharkNinja Operating LLC.

RV2502AE_QSG_E_MP_Mv12

Documents / Resources

	<p>Shark RV2502AE Wifi Connected Robot Vacuum Cleaner [pdf] Installation Guide RV2502AE, Wifi Connected Robot Vacuum Cleaner, RV2502AE Wifi Connected Robot Vacuum Cleaner, Robot Vacuum Cleaner, Vacuum Cleaner</p>
---	--