




[Home](#) » [Shark](#) » **Shark IP3251EUT Power Detect Clean and Empty Cordless Vacuum Owner's Manual** 

Shark®

Clean & Empty PowerDetect

Cordless Vacuum

IP3000 Series

OWNER'S GUIDE



Contents [[hide](#)]

- 1 IP3251EUT Power Detect Clean and Empty Cordless Vacuum
- 2 REGISTER YOUR PURCHASE
- 3 IMPORTANT SAFETY INSTRUCTIONS
- 4 ASSEMBLY (IP3000 SERIES).
- 5 ANTI-ODOUR TECHNOLOGY (IP3000 SERIES)
- 6 CHARGING YOUR LI-ION BATTERY
- 7 USING YOUR VACUUM
- 8 MAINTAINING YOUR VACUUM
- 9 TROUBLESHOOTING
- 10 ADDITIONAL ACCESSORIES AVAILABLE
- 11 TWO (2) YEAR LIMITED BATTERY GUARANTEE
- 12 Documents / Resources
 - 12.1 References


IP3251EUT Power Detect Clean and Empty Cordless Vacuum


THANK YOU

for purchasing the Shark Power Detect Cordless Vacuum.



sharkclean.eu

 **TIP:** You can find the model and serial numbers on the QR code label located on the back of your unit.

 **TIP:** You can locate the date code on one of the prongs of the power cord plug.

ANTI-ODOUR TECHNOLOGY

DANGER

If in direct contact with contents of cartridge:

May cause an allergic reaction to skin.

Wear protective gloves if directly coming into the contact with the cartridge. Wash skin

thoroughly after handling. Harmful if swallowed. Avoid breathing in mist or vapours, intentional misuse and directly inhaling contents may be dangerous. Avoid release to the environment. Very toxic to aquatic life with long lasting effects, ensure cartridge is disposed of correctly as general waste.


2-(4-tert-butylbenzyl) propionaldehyde

May damage fertility and suspected of damaging the unborn child. Do not handle until all safety precautions have been read and understood. Use personal protective equipment, such as protective gloves, as required.

REGISTER YOUR PURCHASE

TO BENEFIT FROM YOUR PRODUCT’S EXTENDED GUARANTEE, SIMPLY REGISTER YOUR PURCHASE AT:

 sharkclean.eu

 Scan QR code using mobile device

Please note, products purchased directly from Shark are automatically registered.
Benefits of registering your product and creating an account:

- Get easier, faster product support and access to guarantee information
- Access troubleshooting and product care instructions
- Be among the first to know about exclusive product promotions

RECORD THIS INFORMATION

Model Number:
Serial Number:
Date Code:
Date of Purchase (Keep Receipt):
Store of Purchase:.....

TECHNICAL SPECIFICATIONS

| | |
|----------|-------|
| Voltage: | 21.6V |
|----------|-------|

| | |
|-------------------|------|
| Body Motor Watts: | 380W |
| Nozzle Watts: | 120W |

PLEASE READ CAREFULLY AND KEEP FOR FUTURE REFERENCE.



This instruction manual is designed to help you get a complete understanding of your new Shark Power Detect Cordless Vacuum.

If you have any questions, please contact customer service at sharkclean.eu

This marking indicates that this product should not be disposed with other household wastes. To prevent possible harm to the environment or human health from uncontrolled waste disposal, recycle it responsibly to promote the sustainable reuse of material sources. To return your used device, please use the return and collection systems or contact the retailer where this product was purchased. They can take this product for environmentally safe recycling.

IMPORTANT SAFETY INSTRUCTIONS

FOR HOUSEHOLD USE ONLY • PLEASE READ ALL INSTRUCTIONS BEFORE USING THIS VACUUM.

To reduce the risk of shock and unintended operation, turn off power and remove the ION Power Pack battery before servicing.

NOTE: If you have delicate or wool carpets, particularly loop pile, please try the vacuum on a hidden area first to ensure the spinning brush-rolls do not damage or unpick carpet fibres.



https://qr.sharkclean.com/iw1000_3000series?qr=1

WARNING

REDUCE THE RISK OF FIRE, ELECTRIC SHOCK, INJURY, OR PROPERTY DAMAGE:

1. This vacuum consists of a motorised nozzle, wand, and handheld vacuum. These components contain electrical connections, electrical wiring, and moving parts that potentially present risk to the user.
2. Before each use, carefully inspect all parts for any damage. If a part is damaged, discontinue use.
3. Use only identical replacement parts.
4. This vacuum contains no serviceable parts.
5. Use only as described in this manual. DO NOT use the vacuum for any purpose other than those described in this manual.
6. With the exception of the filters and dust cup, DO NOT expose any parts of the vacuum to water or other liquids.
7. DO NOT allow the appliance to be used by children. Keep the appliance and its cord out of reach of children. Do not allow to be used as a toy. Close supervision is necessary when used near children.

GENERAL USE

8. This appliance can be used by persons with reduced physical, sensory or mental capabilities or lack of experience and knowledge if they have been given supervision or instruction concerning use of the appliance in a safe way and understand the hazards involved. Cleaning and user maintenance should not be done by children.
9. Always turn off the vacuum before connecting or disconnecting any current carrying hoses, motorised nozzles, chargers, batteries, or other electrical or mechanical parts.
10. DO NOT handle plug or vacuum with wet hands.
11. DO NOT use without dust cup, filters, and brush-roll in place.
12. Only use Shark branded filters and accessories. Damage caused by non-Shark filters and accessories may not be covered by the guarantee.
13. DO NOT put any objects into nozzle or accessory openings. DO NOT use with any opening blocked; keep free of dust, lint, hair, and anything that may reduce airflow.
14. DO NOT use if nozzle or accessory airflow is restricted. If the air paths or the motorised floor nozzle become blocked, turn the vacuum off. Remove all obstructions before you turn on the unit again.
15. Keep nozzle and all vacuum openings away from hair, face, fingers, uncovered feet, or loose clothing.
16. DO NOT use if vacuum is not working as it should, or has been dropped, damaged, left outdoors, or dropped into water.

17. Use extra care when cleaning on stairs.
18. DO NOT leave the vacuum unattended while powered on.
19. When powered on, keep the vacuum moving over the carpet surface at all times to avoid damaging the carpet fibres.
20. If you have delicate or wool carpets, particularly loop pile, please try the vacuum on a hidden area first to ensure the spinning brush-rolls do not damage or unpick carpet fibres.
21. DO NOT use to pick up:
 - a) Liquids
 - b) Large objects
 - c) Hard or sharp objects (glass, nails, screws, or coins)
 - d) Large quantities of dust (including drywall, fireplace ash, or embers).

DO NOT use as an attachment to power tools for dust collection.

 - e) Smoking or burning objects (hot coals, cigarette butts, or matches)
 - f) Flammable or combustible materials (lighter fluid, petrol, or kerosene)
 - g) Toxic materials (chlorine bleach, ammonia, or drain cleaner)
22. DO NOT use in the following areas:
 - a) Wet or damp surfaces
 - b) Outdoor areas
 - c) Spaces that are enclosed and may contain explosive or toxic fumes or vapours (lighter fluid, petrol, kerosene, paint, paint thinners, mothproofing substances, or flammable dust)
23. Turn off the vacuum before plugging in or unplugging the charger.
24. Turn off the vacuum before any adjustment, cleaning, maintenance or troubleshooting.
25. During cleaning or routine maintenance, DO NOT cut anything other than hair, fibres, or string wrapped around the brush-roll.
26. Allow all filters to air-dry completely before replacing in the vacuum to prevent liquid from being drawn into electric parts.
27. DO NOT modify or attempt to repair the vacuum or the battery yourself, except as indicated in this manual.

DO NOT use the battery or vacuum if it has been modified or damaged. Damaged or modified batteries may exhibit unpredictable behavior resulting in fire, explosion or risk of injury.
28. Turn off all controls before unplugging.

29. Always turn off this appliance before connecting or disconnecting motorised nozzle or hand tool.
30. If the supply cord is damaged, it must be replaced by the manufacturer, its service agent or similarly qualified persons in order to avoid a hazard.

BATTERY PACK

31. The battery is the power source for the vacuum. Carefully read and follow all charging instructions.
32. To prevent unintentional starting, ensure the vacuum is powered off before picking up or carrying the vacuum. DO NOT carry the appliance with your finger on the power switch.
33. For IP3000 Series, use only the XDCKIP3000EU charging dock (One battery can be charged). For IP3000 Series, use only with DK30A-263100H-V or YLJX21-E263100 charger.
34. Keep the battery away from all metal objects such as paper clips, coins, keys, nails, or screws. Shorting the battery terminals increases the risk of fire or burns.
35. Under abusive conditions, liquid may be ejected from the battery. Avoid contact with this liquid, as it may cause irritation or burns. If contact occurs, flush with water. If liquid contacts eyes, seek medical help.
36. Battery should not be stored at temperatures below 3 deg * C (37.4 deg * F) or above 40 deg * C (104 deg * F) to maintain long-term battery life.
37. DO NOT charge battery at temperatures below 5 deg * C (40 deg * F) or above 40 deg * C (104 deg * F) . Charging improperly or at temperatures outside of the specified range may damage the battery and increase the risk of fire.
38. Store the appliance indoors.
39. DO NOT expose the battery to fire or temperatures above 130 deg * C (265 deg * F) as it may explode.
40. Use appliances only with specifically designated battery packs. Use of any other battery packs may create a risk of injury and fire.
41. Disconnect the battery pack from the appliance before making any adjustments. changing accessories, or storing appliance. Such preventive safety measures reduce the risk of starting the appliance accidentally.
42. Always ensure that the rechargeable battery is removed from the appliance before inserting into the battery charging sleeve.
43. For IP3000 Series, use only Shark battery pack XBATR640EU (21.6V 3750mAh

81wh).

ODOUR (IP3000 SERIES ONLY)

44. Observe the following when interacting with the Anti-Odour Technology cartridge:
- a) DO NOT attempt to disassemble Anti-Odour Technology cartridge.
 - b) Avoid direct contact with the fragrance pod in the cartridge.
 - c) DO NOT directly inhale from the Anti Odour Technology cartridge.
 - d) Keep away from children and pets.
 - e) Keep away from heat, sparks, and open flame.
 - f) DO NOT place in direct sunlight.

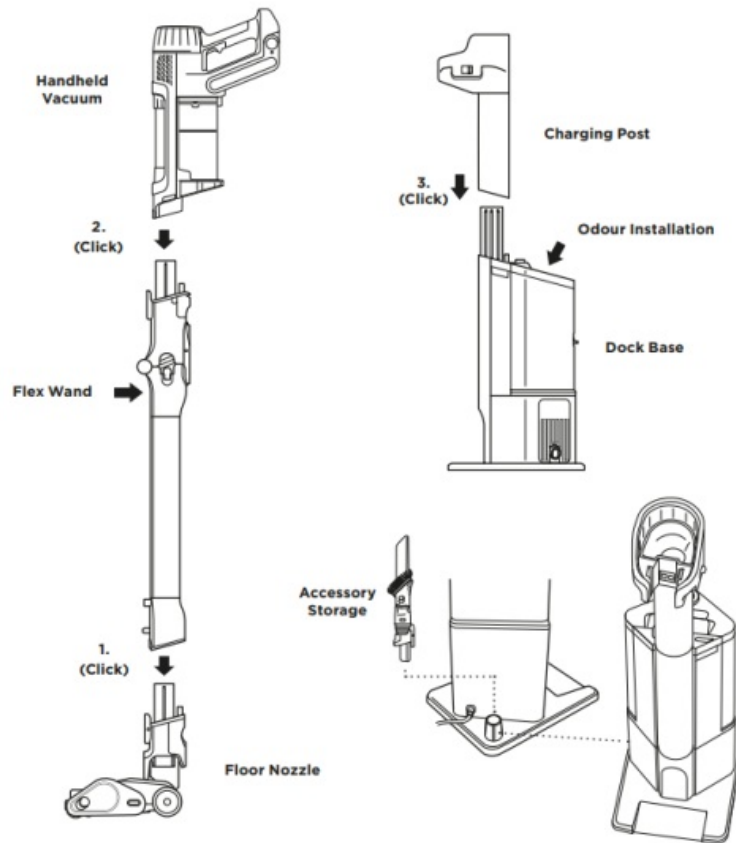
FRAGRANCE CARTRIDGE FIRST AID

45. Observe the following when interacting with the Anti-Odour Technology cartridge:
- a) Avoid contact with fabrics and finished surfaces.
 - b) Eye contact: Remove contact lenses if present. Rinse continuously with water for several minutes.
 - c) Skin contact: Wash hands thoroughly after handling. If irritation or rash develops, seek medical advice/attention.
 - d) Inhalation: Move person to fresh air if they are experiencing any respiratory symptoms. If symptoms persist, seek medical advice/attention.
 - d) Ingestion: DO NOT induce vomiting. Seek medical advice/attention.

ASSEMBLY (IP3000 SERIES).

1. Slide the Wand onto the neck of the Floor Nozzle until it clicks into place.
2. Align the Hand Vacuum nozzle opening with the top of the wand and slide it on until it clicks into place.
3. Make sure the Dock Base is facing upright. Slide the Charging Post into the slot on front of dock until it clicks.
4. Place the dock on the floor near a wall outlet. Plug the Power Cord into the outlet.
5. Store the crevice tool using Accessory Storage on the dock.
6. Refer to pages 8 and 9 for Odour Installation and Replacement instructions.

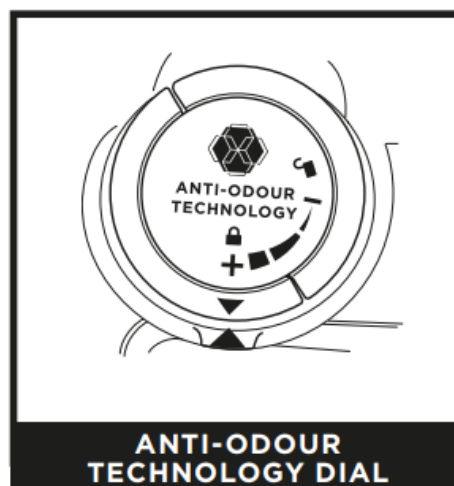
For proper operation, ensure all components are completely connected and clicked into place.



NOTES

ANTI-ODOUR TECHNOLOGY (IP3000 SERIES)

ADJUSTING THE ANTI-ODOUR TECHNOLOGY INTENSITY



Flip up the dial handle and rotate the odour dial to adjust odour neutraliser technology intensity or to unlock the dial for cartridge access.

Insertion/Removal: Rotate the odour dial to align the teal arrows. Remove the dial to access the odour cartridge for removal or replacement.

Low: Rotate the dial toward the Low position to decrease the intensity to the lowest

level when the vacuum is in use.

High: Rotate the dial toward the High position for the highest intensity level when the vacuum is in use. This position is the recommended setting for optimal performance.

ANTI-ODOUR TECHNOLOGY TIPS (IP3000 SERIES)

The Anti-Odour Technology Dial Must be Installed for Vacuum to Function Properly

- Remove anti-odour cartridge from dial if you don't want the benefits of the Anti-Odour Technology.

Maintenance Required

- Clean all filters as recommended under Cleaning Filters.
- Empty the dust cup before storing your vacuum.
- Replace the cartridge as recommended under Odour Cartridge Replacement.
- Visit sharkclean.eu to learn more and purchase replacements.

Fragrance Strength Over Time

- The intensity of the Anti-Odour Technology's fragrance may diminish over time. It may also have no noticeable fragrance at all. This is natural and does not indicate the technology isn't working. Follow replacement instructions to ensure continued performance.

NOTES:

- The odour dial needs to be installed for the vacuum to function properly, with or without the odour cartridge.

ANTI-ODOUR TECHNOLOGY (IP3000 SERIES)

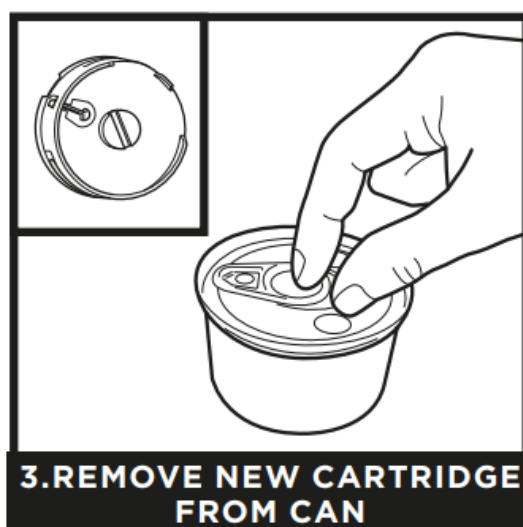
ODOUR CARTRIDGE REPLACEMENT



1. Flip up the handle and rotate the dial clockwise until the two arrows are aligned. Pull the handle to remove the dial from the auto-empty dock.

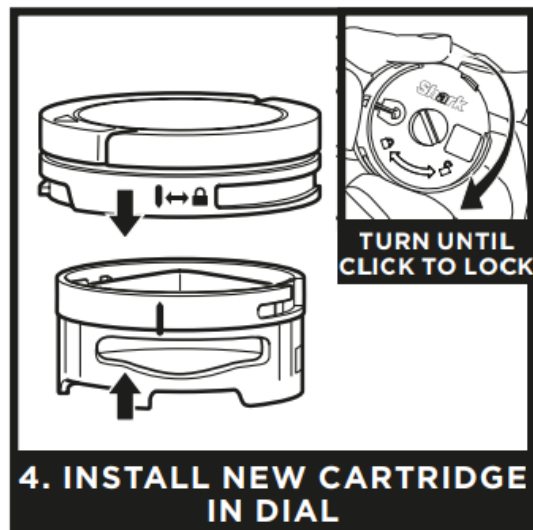


2. Rotate the cartridge counterclockwise in the dial housing and pull out the cartridge to remove it.

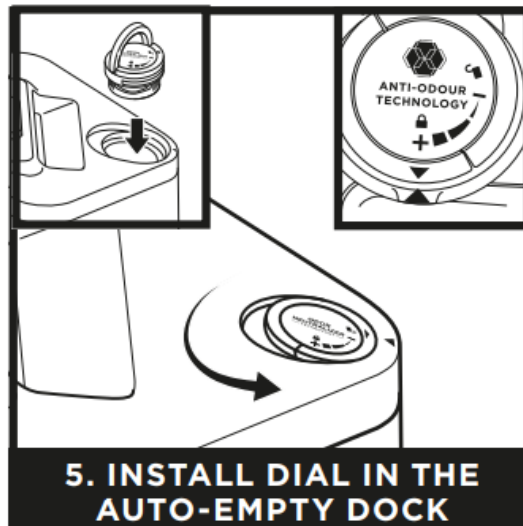


3. Remove the new Anti-Odour cartridge from the can. To maintain the life of the cartridge, keep it in the can until you are ready to install it. Remove the new Anti-Odour cartridge from the can. To maintain the life of the cartridge, keep it in the can

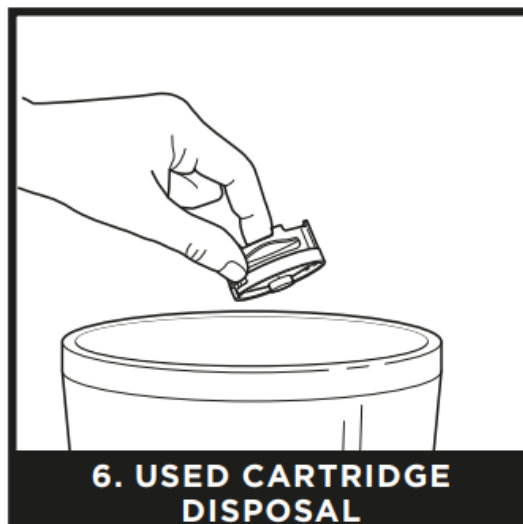
until you are ready to install it.



4. Align the yellow arrow on the side of the cartridge with the yellow arrow on the side of the dial cover, then insert the cartridge into the dial. Rotate the cartridge clockwise to lock it in place.



5. Align the teal arrow on the dial cover with the arrow on the auto-empty dock, then reinsert the dial into the auto-empty dock. Rotate the dial counterclockwise until it clicks into an intensity setting to engage. Rotate further to change the intensity setting.



6. Dispose of the old cartridge by dropping it into the bin.

NOTE: Odour cartridges should be replaced every 6 months for optimal odour neutraliser technology performance.

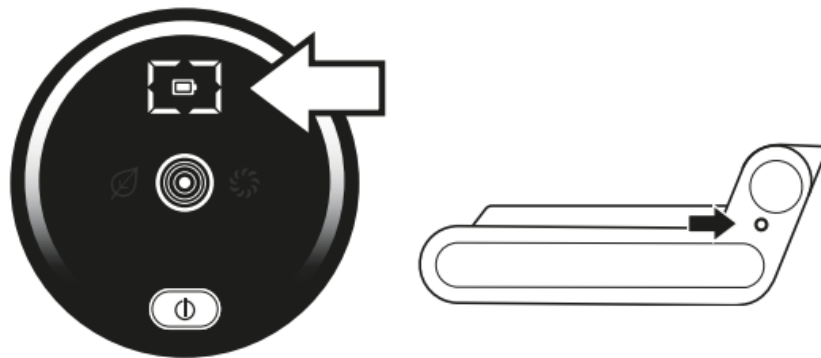
CHARGING YOUR LI-ION BATTERY

Prior to first use, charge the battery completely. A full charge takes approximately 6 hours.

RUNTIMES PER FULLY CHARGED BATTERY

With a full charge, the unit will have up to a 70-minute runtime. Visit sharkclean.eu online for more information.

LED BATTERY POWER AND CHARGING INDICATORS




NOTE: Battery consumption will vary depending on the mode being used:

ECO – Maximum Runtime, saves battery power

AUTO – Optimises suction and power for maximum cleaning

BOOST – Maximises suction. Uses the most battery power

Charging

 LED on the battery pack will pulse yellow when reaching 0-75% charge.

 LED on the battery pack will pulse green from 75% – 100% charge.

 White LED the battery pack is fully charged.

NOTE: Full charge takes approximately 6 hours.

Additional Notes

1. LEDs turn off once the battery is fully charged.
2. Unit will not power on when charger is connected.

In Use

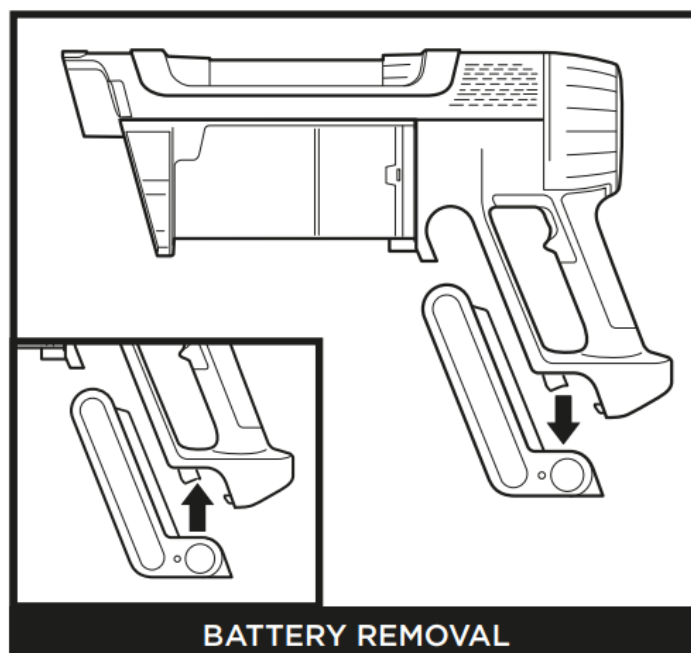


RECYCLING THE LI-ION BATTERY

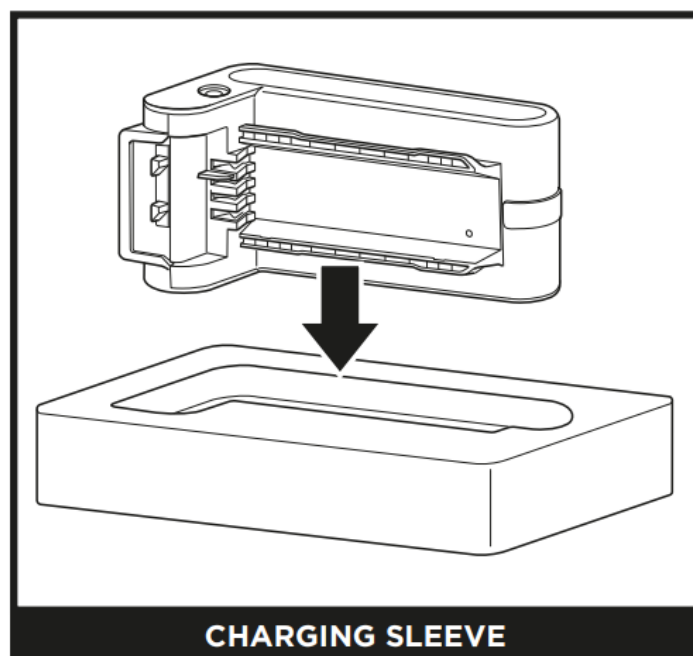
When the Shark Li-ion battery needs to be replaced, dispose of it or recycle it in accordance with local ordinances or regulations. In some areas, it is illegal to place spent lithium-ion batteries in the standard rubbish bin. Return spent batteries to an authorised recycling centre or to the retailer for recycling. Contact your local recycling centre for information on where to drop off the spent battery.

NOTE: The Shark battery, like all lithium-ion batteries, will naturally decrease in capacity over time from the 100% capacity of a new battery.

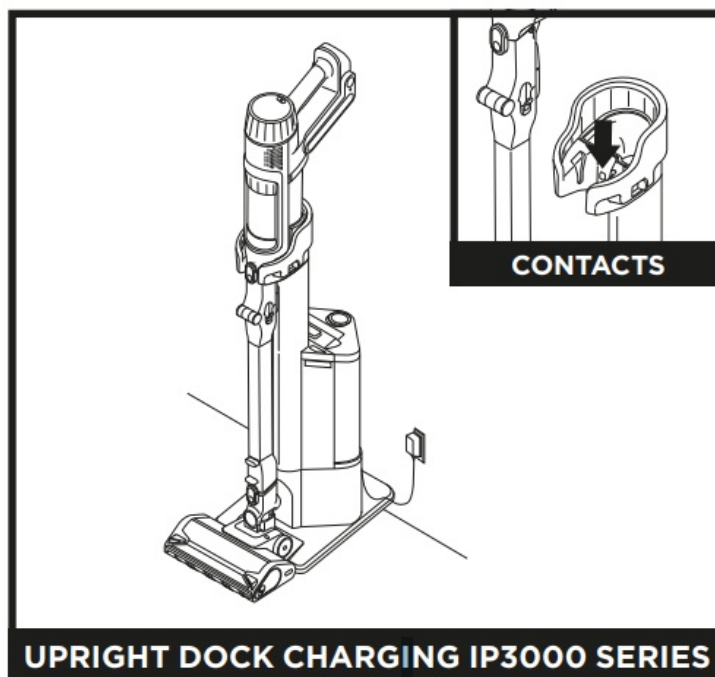
CHARGING YOUR LI-ION BATTERY



To remove the battery from the vacuum, press the release button on the battery and slide out of the handle compartment. To reinstall, slide the Battery back into the compartment until it clicks into place.



To charge the battery, remove it from the vacuum and insert into the charging sleeve. Once the battery is showing as fully charged reinsert into the handle compartment on the vacuum (see charging indicators on previous page)



Charge the unit by placing it on the dock. Make sure the contacts on the wand are aligned with the contacts on the charging post.

When charging is complete and you need to use the unit again, lift it off the dock.

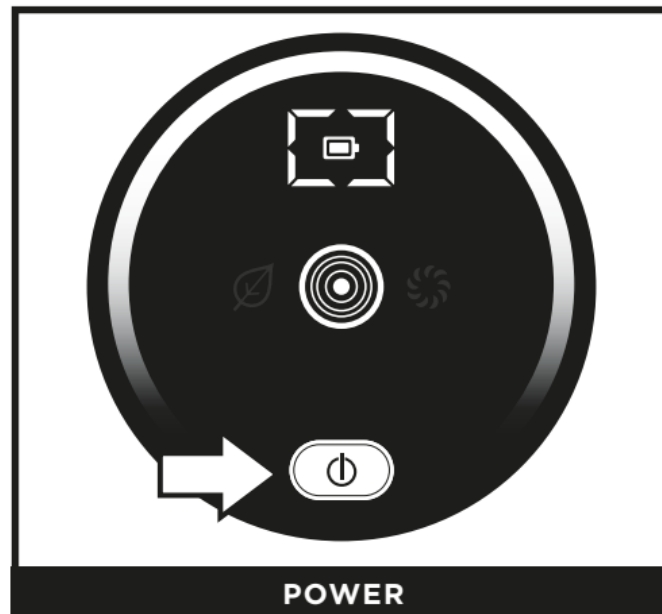
NOTE: When the unit is docked properly, the charging lights on the battery will blink, indicating that charging has begun.


NOTE: The main unit comes with a partial charge. For maximum runtime, charge fully

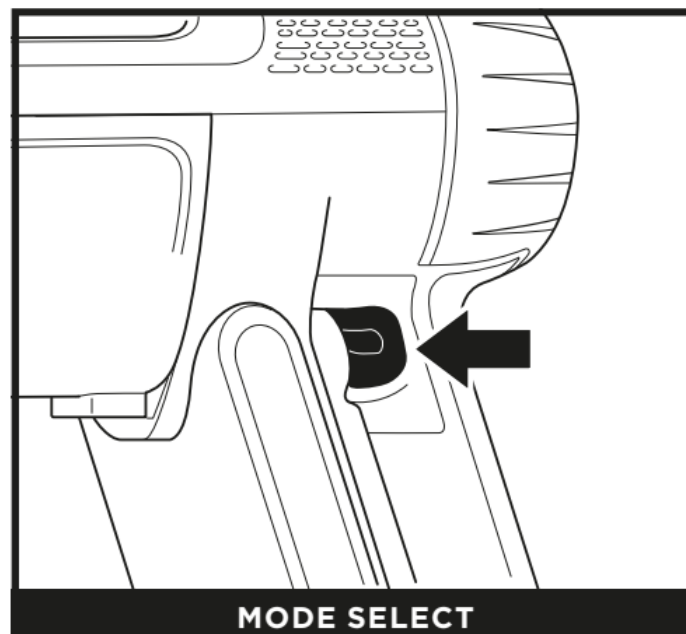
before first use (approximately 6 hours). Leaving the unit plugged in will not damage battery life.

USING YOUR VACUUM

CONTROLS AND CLEANING MODES

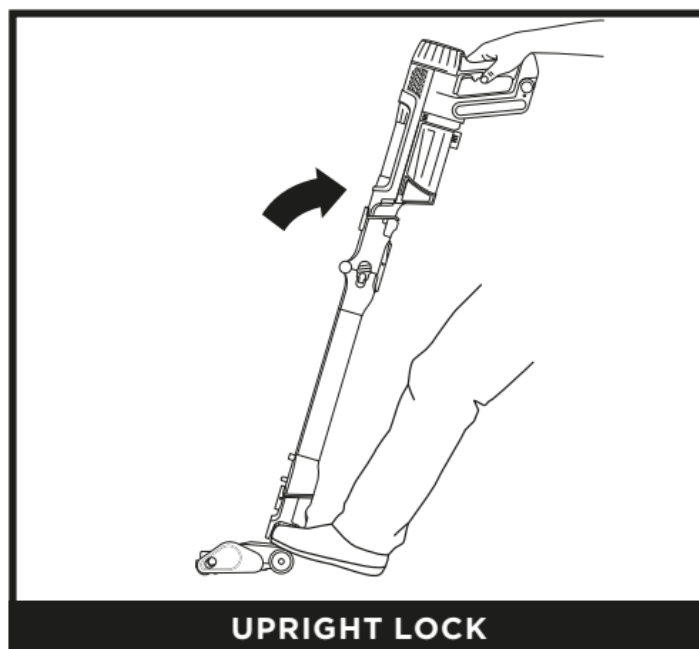


Press the  button on the UI Screen to turn on power. To turn off power, press the button again.



To toggle between ECO, DETECT, and BOOST modes, press the mode selection trigger on the handle (shown above). In DETECT mode, Detect Technology automatically adjusts vacuum and nozzle power to maximise cleaning performance and optimise

runtime.

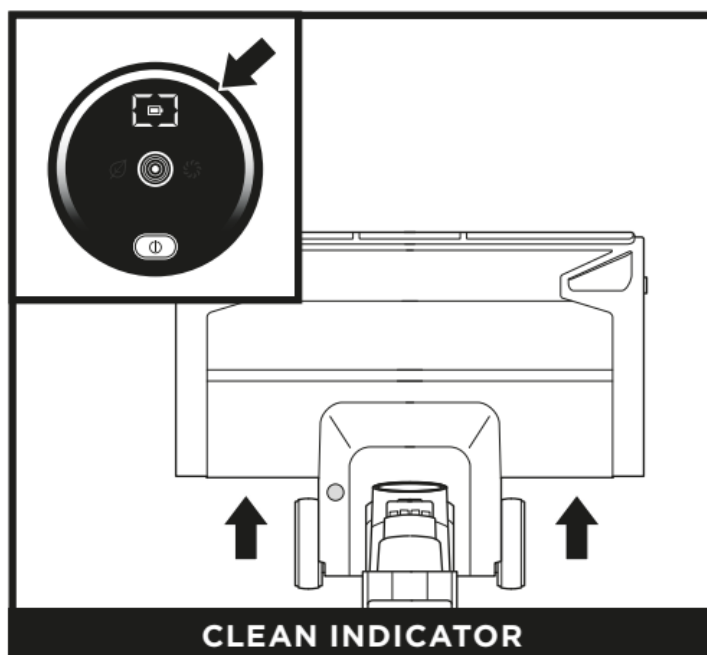


To begin cleaning with the floor nozzle, disengage the lock by stepping on the nozzle and tilting the hand vac down.

NOTE: For – Best Cleaning on ASTM and IEC Cleaning Tests, Use Boost Mode.

DETECT TECHNOLOGY EXPLAINED

NOTE: Detect Technology is ONLY operational in Detect Mode and is activated automatically when the unit is in use.

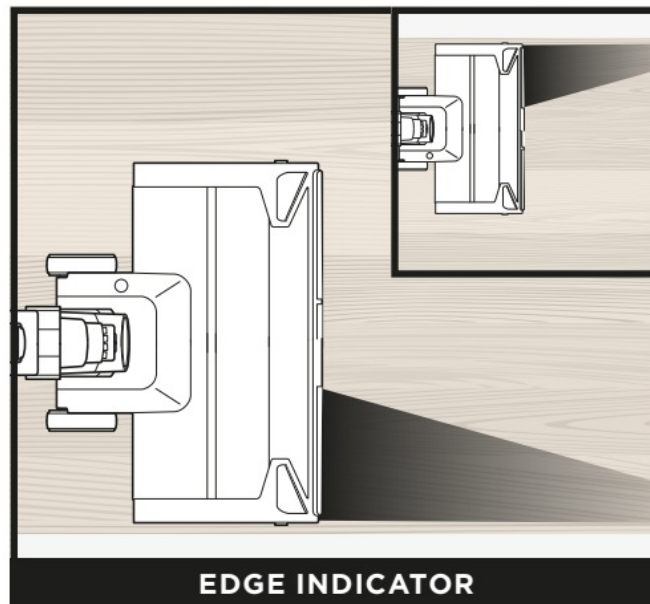


Vacuum identifies dirtier areas and automatically boosts suction power to pull in hidden dirt.

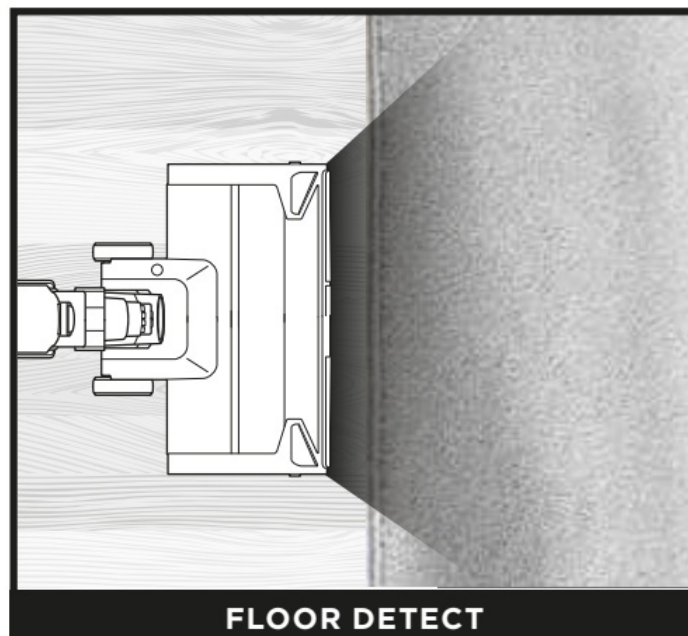
White LED = No heavy debris detected, low suction

Pink LED = Debris is being cleaned, medium suction

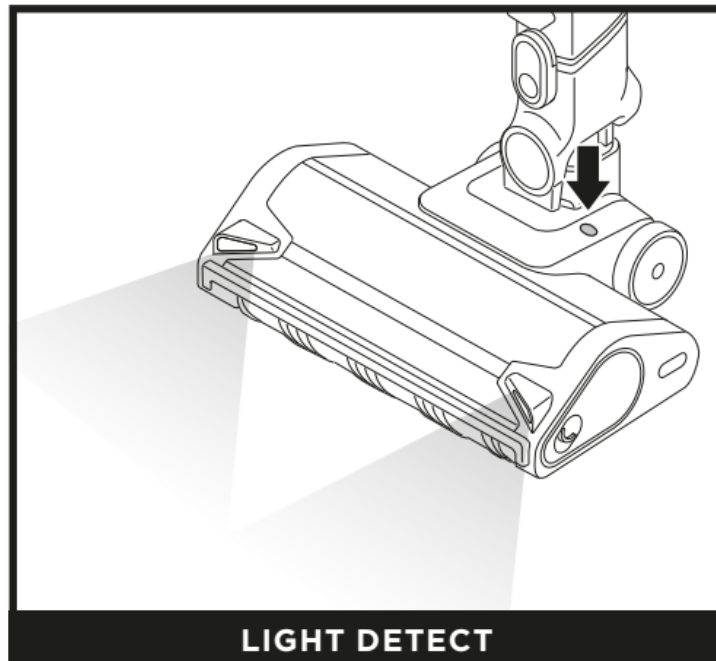
Purple LED = Heavy debris detected, high suction



Vacuum floor nozzle detects edges and corners and maximises suction and power to remove stubborn dirt.

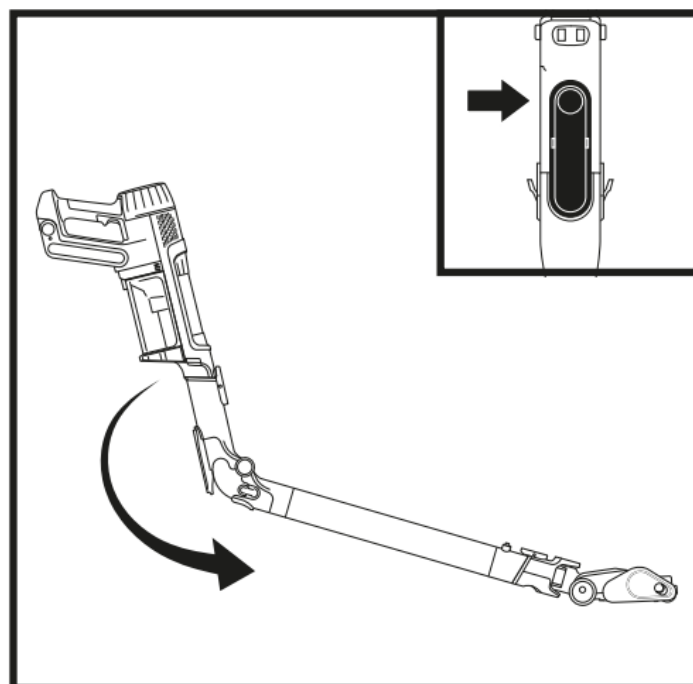


Brushroll and vacuum responds to surface changes and automatically adjusts to optimise your clean.



Senses low-light situations and automatically illuminates dark areas to help you spot debris.

FLEXOLOGY

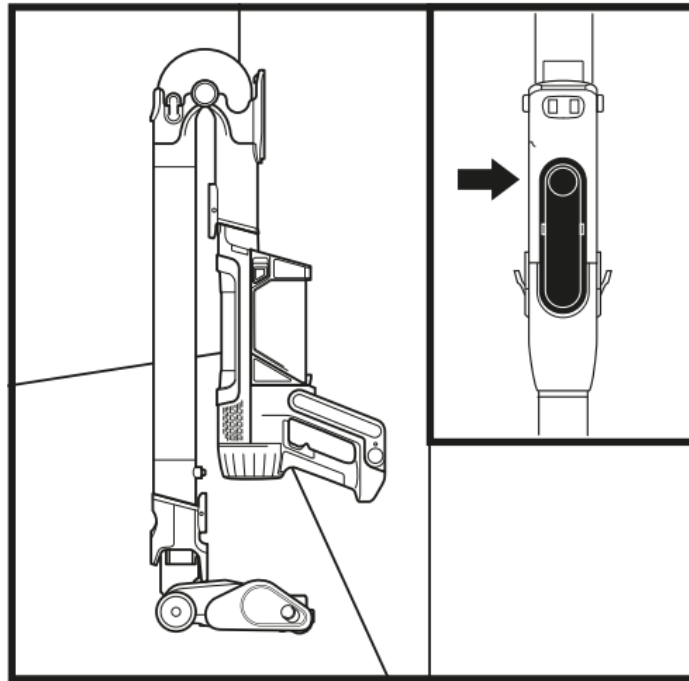


Flexology allows you to flex the wand to reach under furniture and clean debris in hard-to-reach areas.

To engage the Flexology feature, press the unlock button on the back of your Flex Wand.

For straight wand cleaning, return the wand to its original angle. You will hear a click

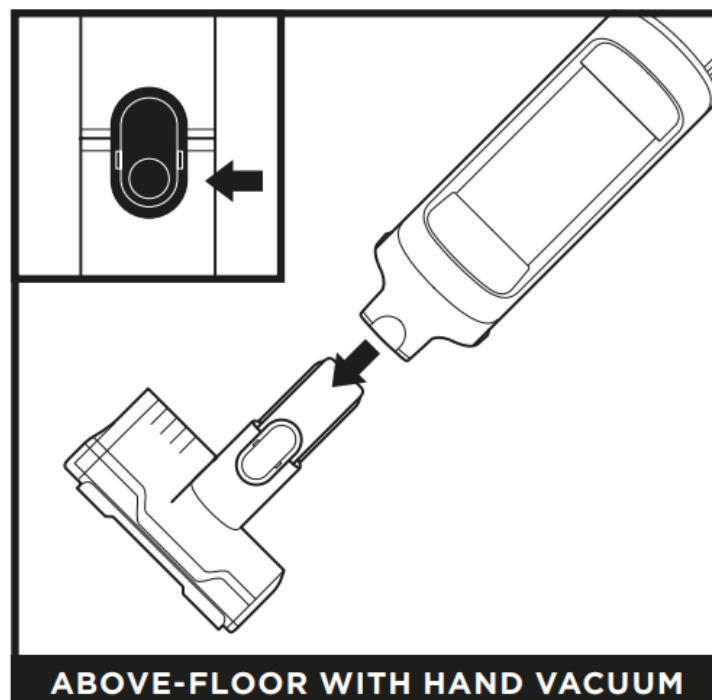
when it is securely back in place.



To put the vacuum into storage mode, press the Flexology wand unlock button while folding the handheld vacuum forward until it is resting against the wand.

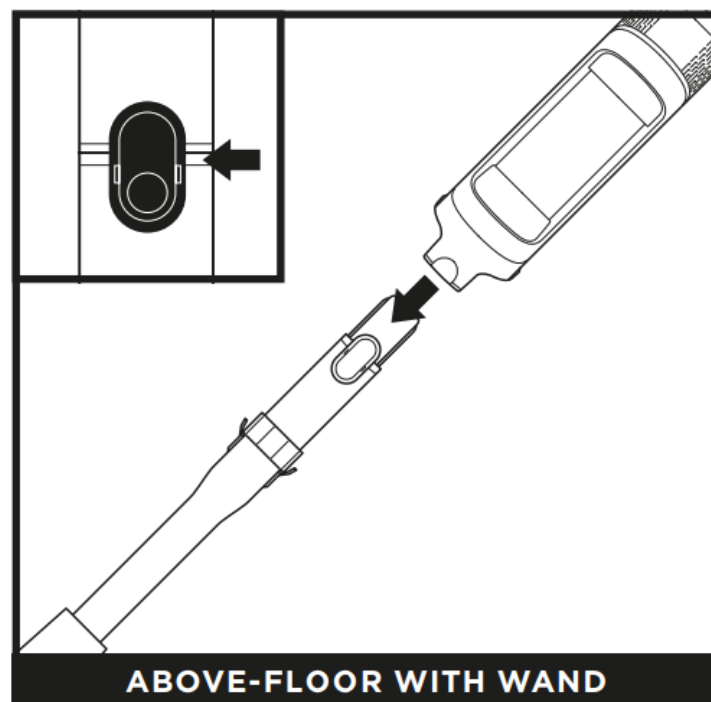
To release vacuum from storage mode, unfold the vacuum until the wand straightens and clicks securely back in place.

ABOVE-FLOOR CLEANING



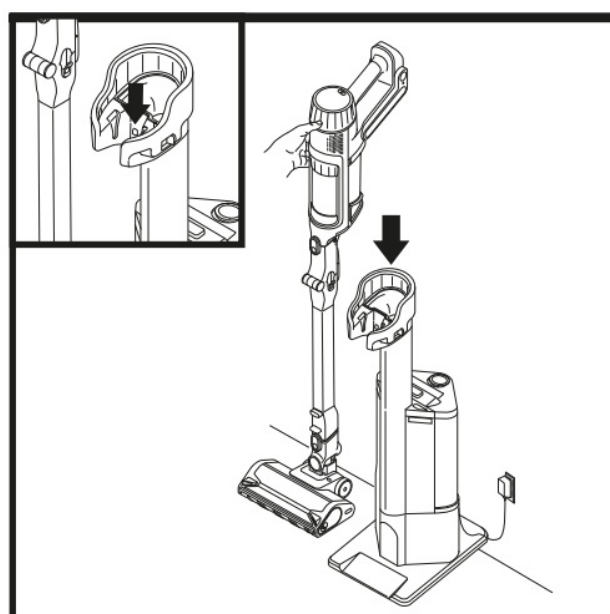
Detach the hand vacuum to clean above-floor areas. Press the front latch release button

on the hand vac where it meets the wand, then lift off the hand vacuum. To attach an accessory to the hand vacuum, slide it into the opening in the nozzle. To remove, press the front latch release button on the hand vac where it meets the wand, and slide out the accessory.

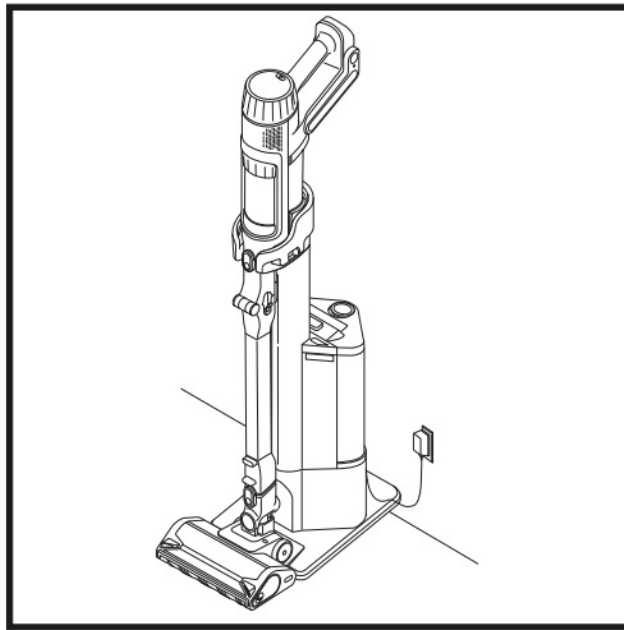


To detach the floor nozzle from the wand, step on the nozzle while pressing the nozzle release button at the bottom of the wand. Lift the wand to remove it. To reattach the wand, align it over the neck of the floor nozzle, then slide it on until it clicks into place.

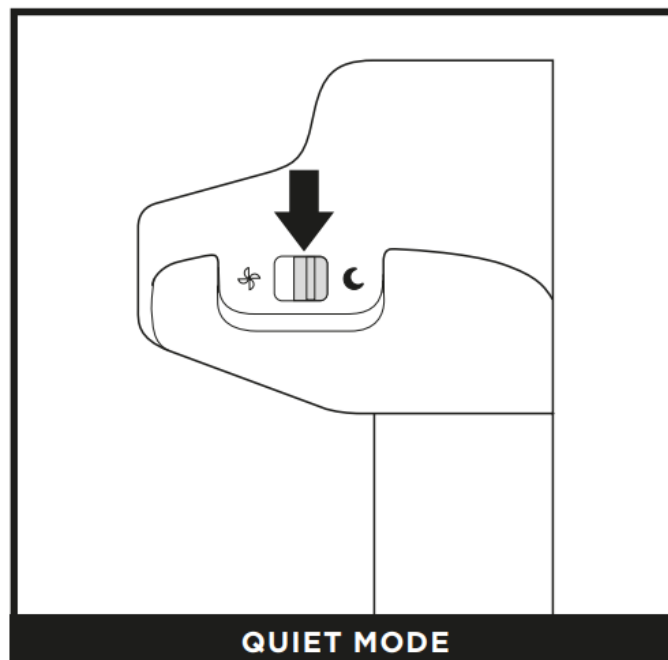
USING THE AUTO-EMPTY DOCK (IP3000 SERIES)



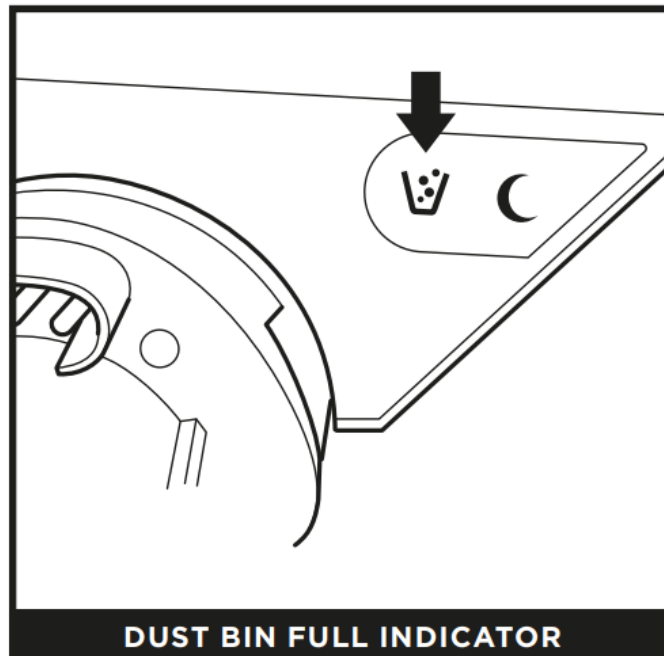
Place the vacuum on the dock in a downward motion. Once properly attached, the auto evacuation process will begin. The evacuation cycle will last for 15 seconds.



Once evacuation is complete, the vacuum will continue charging until it is removed from the dock.



Use Quiet Mode to dock and charge the vacuum without automatic evacuation. To activate Quiet mode, press the moon switch on top of the charging post.

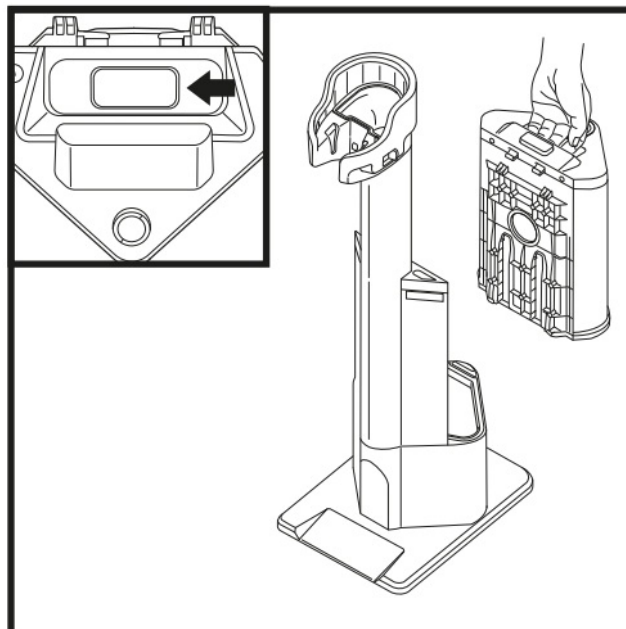


The Dust Bin Full indicator will illuminate when the dust bin is full of debris and needs to be emptied. To reset the indicator, remove the dust bin and empty it.

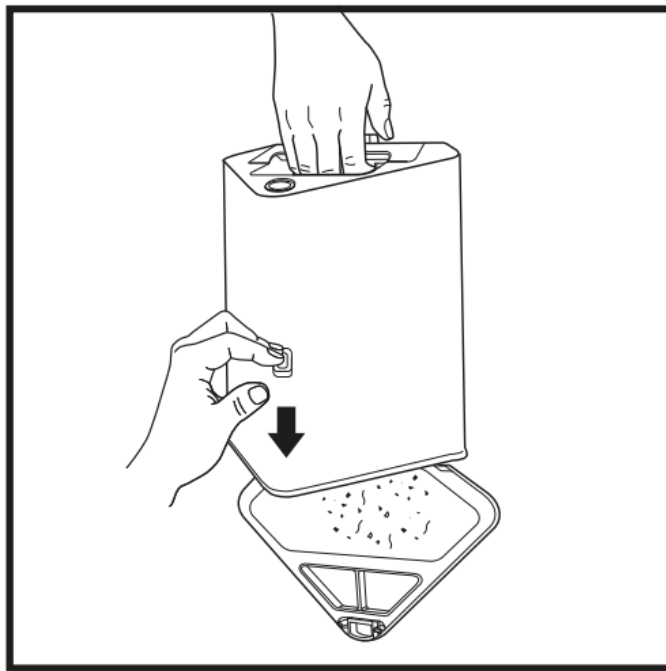
Note: Do not remove the vacuum while the evacuation cycle is taking place.

MAINTAINING YOUR VACUUM

EMPTYING THE DOCK DUST BIN (IP3000 SERIES)



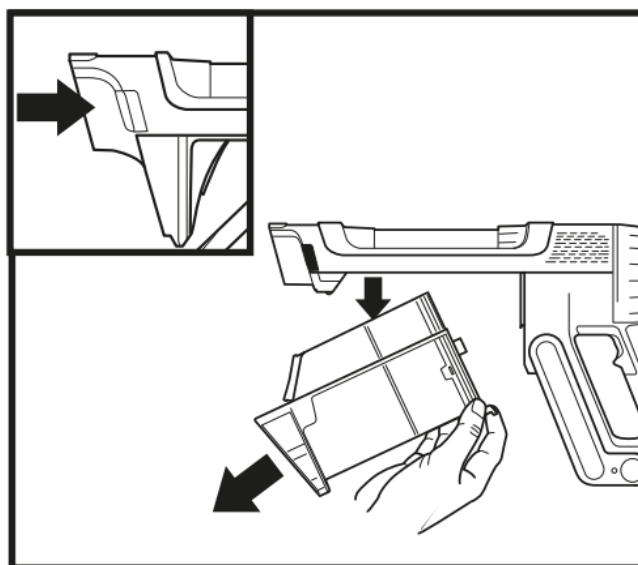
The dock dust bin holds up to 45 days' worth of dust and debris. Empty the dock dust bin when the dust bin full indicator light comes on. To remove the bin, lift it out by the handle.



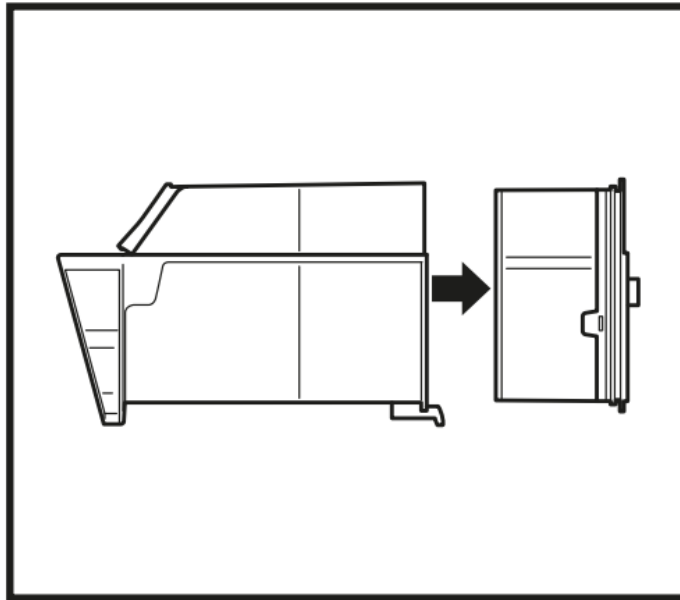
To empty the bin, hold it over the rubbish bin and press the release button on the side. The bottom will open to release the debris.

CLEANING THE VACUUM FILTERS

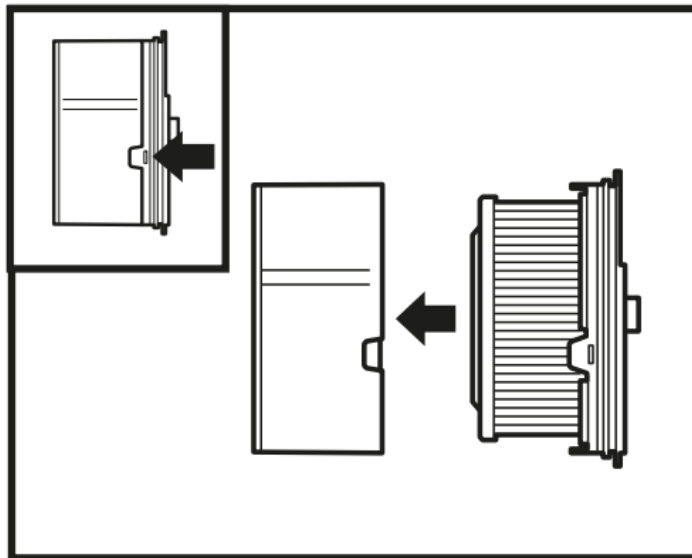
NOTE: For best results, clean your filters at least once a month and replace the filters regularly. To clean filters, clear loose debris and rinse with cold water **ONLY** to prevent damage from cleaning chemicals. Allow all filters to dry fully before reinstalling to prevent liquid from being drawn into electrical parts. Maintaining your Filters will ensure successful cleaning and Auto-Empty evacuation (IP3000 series only).



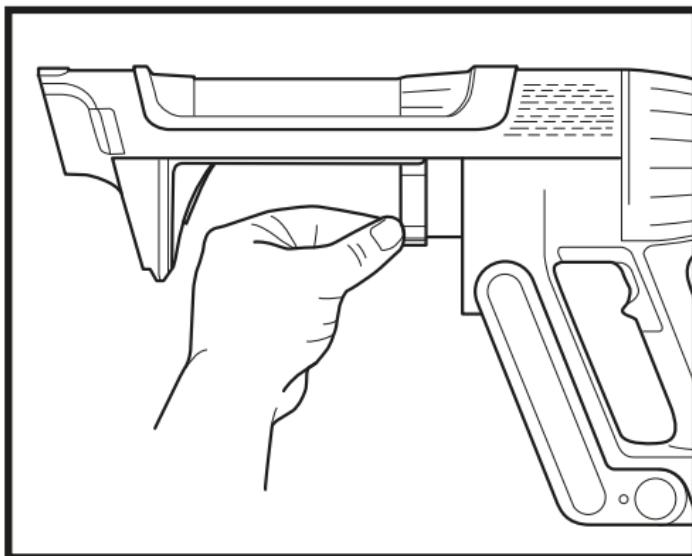
1. To access the dust cup on your IP3000 hand vacuum, engage the dust cup removal button and pull downward disengage from the hand vacuum.



2. Remove Pre Motor Filter from dust cup.



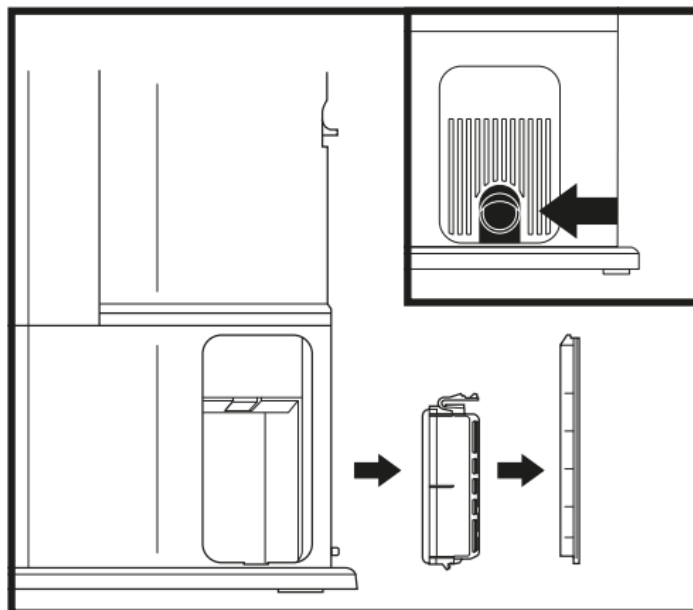
3. Lift release tabs to open filter assembly for cleaning.



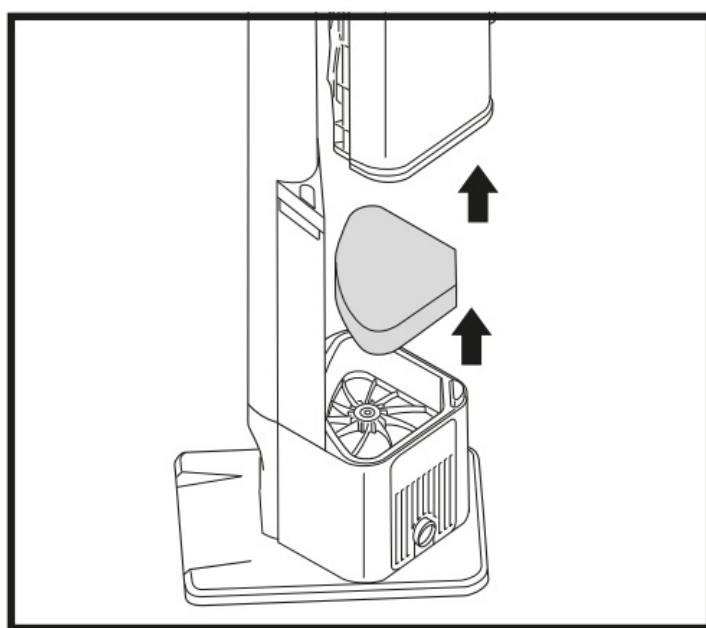
4. Pull the release tab to remove the Post Motor filter for the vacuum.

5. After cleaning, slide the filter back into the vacuum.

CLEANING THE AUTO-EMPTY DOCK FILTER

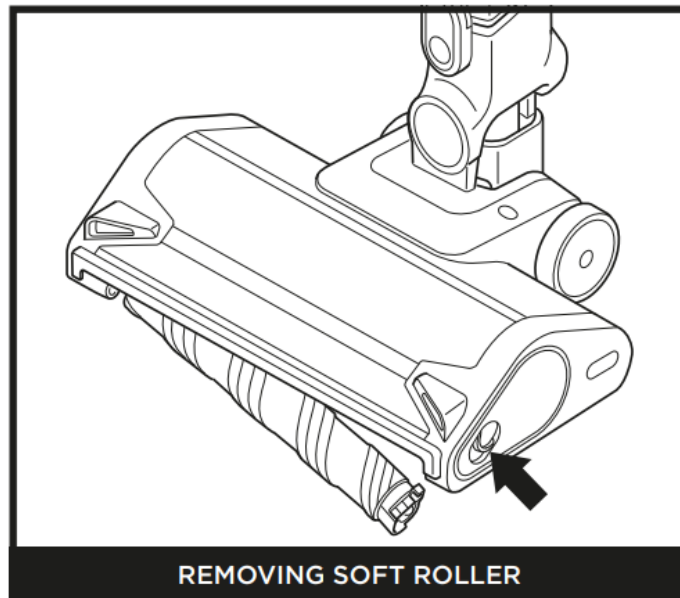


To access the filter in the dock, Press the button at the bottom of the door, then tilt the door and lift it off. Remove the filter from the dock. After the filter has been cleaned, reinstall it by reinserting back into the dock and replacing the filter door.

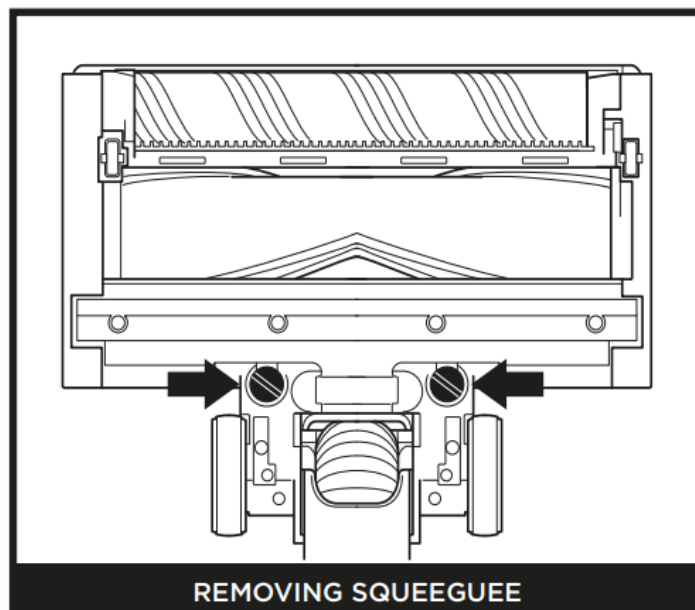


Filter, remove the dust bin. Before removing the Exhaust Foam Filter, remove any fine debris from the surface using the hand vacuum. Lift the Exhaust Foam Filter out of the dock to clean and then reinstall.

NOZZLE MAINTENANCE



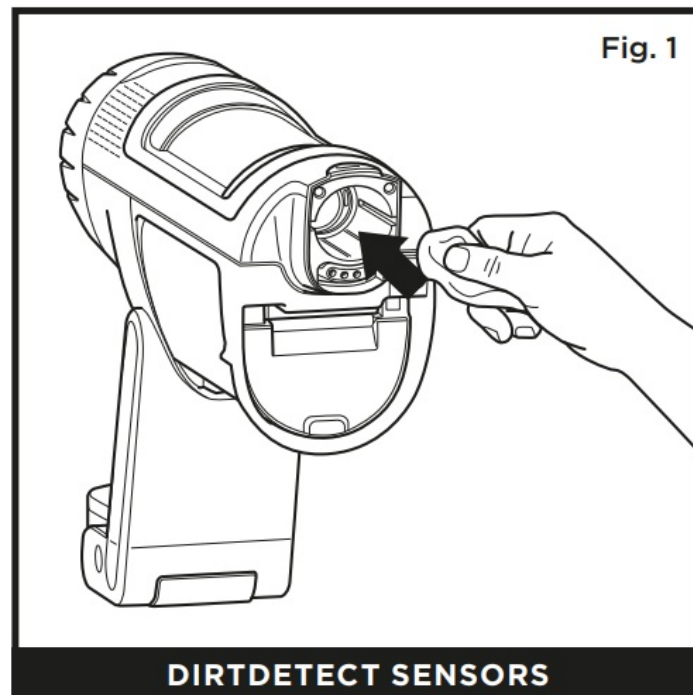
1. Turn off the vacuum.
2. Press the nozzle release button to detach the nozzle from the wand.
3. Press the soft roller release button and slide the soft roller out of the nozzle.
4. Clear any blockages and remove any debris from the soft roller and floor nozzle.
5. Tap off loose debris and wipe the soft roller clean with a dry towel. Hand wash the soft roller if needed, using only water, and then let it air dry completely before reinstalling.
6. When the soft roller is completely dry, reinstall it into the nozzle by inserting it into the nozzle until it clicks.



1. Turn off the vacuum.
2. Press the nozzle release button to detach the nozzle from the wand.
3. Remove rear squeegee by turning screws.

4. Clear out any blockages and debris from behind the squeegee.
5. Reinstall squeegee and turn screws until they lock into place.

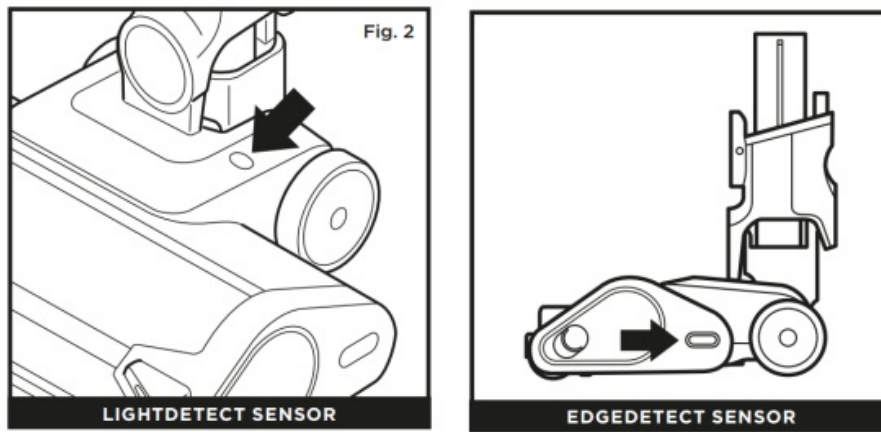
CLEANING THE SENSORS



Make sure to clean the Detect sensors regularly, as hair and other debris may build up and obstruct them. If the sensors are partially obstructed, Clean Sense Detect mode will not function as expected.

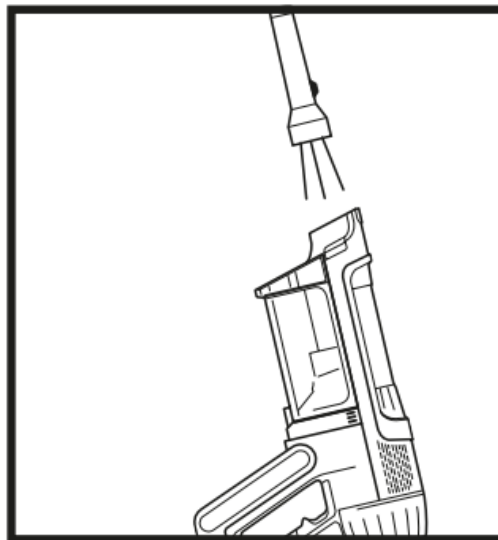
To clean the sensors:

1. Turn off power and remove the floor nozzle.
2. Locate the Dirt Detect Sensor in the nozzle of the hand vac (Fig. 1), the Light Detect Sensor on the top of the nozzle (Fig. 2), and the Edge Detect sensor on the side of the nozzle (Fig. 3).
3. Gently wipe the sensors with a microfibre cloth and remove all hair and debris.
4. Reattach the floor nozzle to the rest of the unit and turn on power. Verify that the unit is functioning normally.



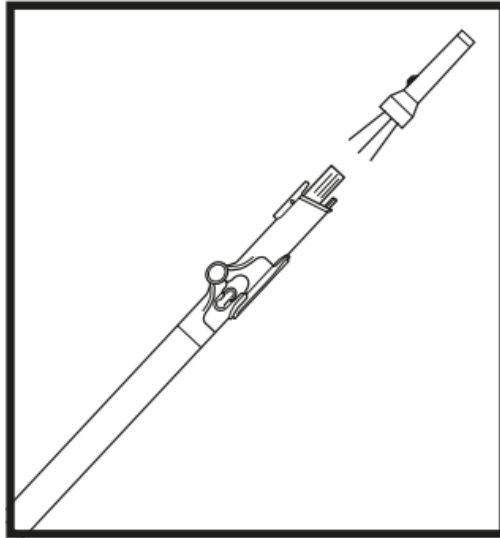
CHECKING FOR BLOCKAGES IN THE VACUUM

If you run over a hard or sharp object or notice a noise change while vacuuming, check for blockages or objects caught in the brushroll.



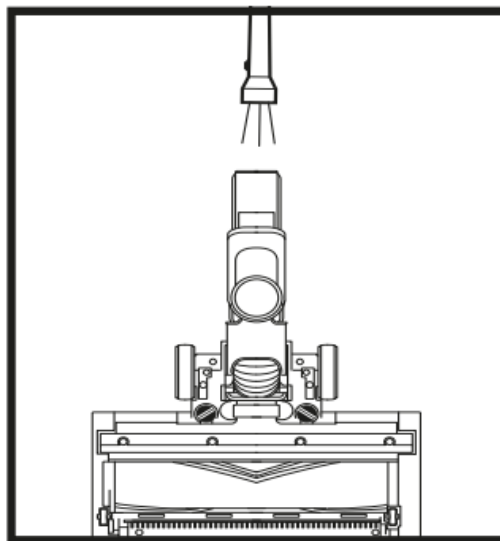
Checking for Blockages in the Hand Vacuum:

1. Turn off the vacuum.
2. Remove the hand vacuum from the wand.
3. Check all intake openings to the dust cup and remove any debris or blockages.



Checking for Blockages in the Wand:

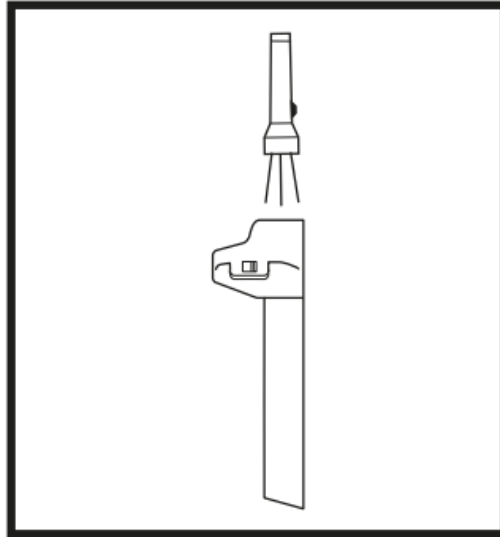
1. Turn off the vacuum.
2. Detach the hand vacuum and floor nozzle from the wand.
3. Check both ends of the wand for blockages and debris.
4. Clear away any debris or blockages.



Checking for Blockages in the Floor Nozzle:

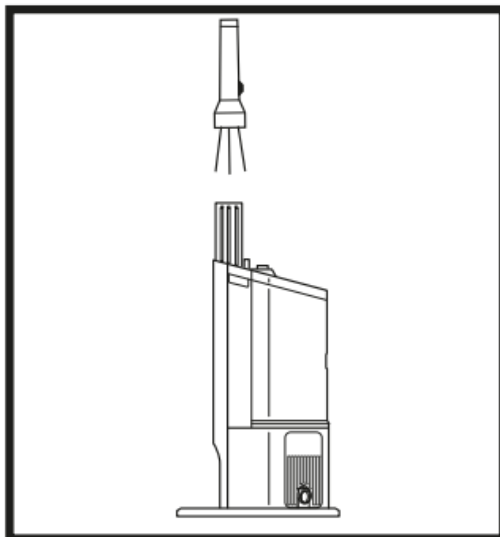
1. Turn off the vacuum.
2. Detach the wand from the floor nozzle.
3. Press the soft roller release button and slide the brushroll out of the nozzle.
4. Clear any blockages and release any debris from the brushroll and floor nozzle.
5. Slide the soft roller back into the nozzle, ensuring everything is lined up and in place.

CHECKING FOR BLOCKAGES IN THE AUTO-EMPTY DOCK (IP3000 SERIES)



Checking for Blockages in the Charging Post:

1. Unplug the dock.
2. Remove the vacuum from the dock.
3. Press the latch on the back of the charging post and lift the post away from the dock.
4. Check the end of the charging post and top of the dock for any debris or blockages.



Checking for Blockages in the Dock:

1. Unplug the dock.
2. Remove the vacuum from the dock.
3. Remove the dust bin from the dock.
4. Check the exit for any debris or blockages.

TROUBLESHOOTING

⚠ WARNING: To reduce the risk of shock and unintended operation, turn off power and remove the battery before servicing.

Vacuum is not picking up debris. No suction or light suction. Third indicator light on hand vacuum is solid yellow.

(Refer to Checking for Blockages section for more information.)

1. Dust cup may be full; empty dust cup.
2. Check floor nozzle for blockages; clear blockages if required.
3. Remove any string, carpet fibers, or hair that may be wrapped around the brushroll.
4. Check connection between hand vacuum and wand for blockages; clear blockages if required.
5. Check filters to see if they need cleaning. Follow instructions for rinsing and completely air-drying the filters before reinstalling them.

Vacuum lifts area rugs.

1. Make sure you are not engaging Boost mode. Take care when vacuuming area rugs or rugs with delicately sewn edges.
2. Turn off the unit to disengage from the carpet, then restart.

The brushroll in the floor nozzle doesn't spin.

1. Immediately turn off the vacuum. Remove any blockages before turning the vacuum back on. Make sure the hand vacuum is tilted back far enough for the brushroll to engage while in use.
2. If the floor nozzle has headlights and they are not illuminated, there is a connection issue between the hand vacuum, wand, and nozzle. Try detaching the parts, then reconnecting them.

Vacuum turns off on its own.

There are several possible reasons for the vacuum turning off on its own, including blockages, battery issues, and overheating. If vacuum turns off on its own, perform the

following steps:

1. Turn on the vacuum and check the battery indicator lights on the hand vacuum. If recharging is needed, make sure vacuum power is off placing it on the charging dock.
2. Empty dust cup and clean filters (See the Cleaning the Dust Cup and Filter section).
3. Check wand, accessories, and inlet openings and remove any blockages.
4. Allow unit and battery to cool for at least 45 minutes, until they return to room temperature.
5. Press the On/Off switch to restart the vacuum.

| Malfunction | Component | Error Icons phase 1 | | Error Icons phase 2 | LED Icons |
|-------------------------------|-------------|-----------------------------|---|-----------------------|---|
| Nozzle Clog or Stalling | Nozzle | LED Ring is Flashing Purple | ↔ | No LEDs |  |
| Motor Failure during start up | Hand Vacuum | Eco, Boost LEDs on | ↔ | Eco, Detect LEDs on | |
| Over Temperature Protection | Hand Vacuum | Eco, Detect, Boost LEDs on | ↔ | Boost, Detect LEDs on | |
| Over Current protection | Hand Vacuum | Eco, Detect, Boost LEDs on | ↔ | No LEDs | |
| Short Protection | Hand Vacuum | Eco, Detect LEDs on | ↔ | No LEDs | |
| Overspeed Protection | Hand Vacuum | Detect LEDs on | ↔ | Eco, Boost LEDs on | |

| | | | | |
|-------------------------------------|--------------------|---|---|------------------------------|
| Communicati on failure | Hand Vacu um | Eco, Detect LEDs on | ↔ | Detect, Bo ost LEDs on |
| Over Temper ature Protecti on | Nozzl e | Eco, Boost LEDs | ↔ | No LEDs |
| Short Protecti on | Nozzl e | Detect, Boost LEDs on | ↔ | No LEDs |
| Debris Detect ion Failure | Hand Vacu um | F0 LEDs & LED Rin g on | ↔ | No LEDs |
| Edge Detect Error | Nozzl e | F0 LED on, LED Rin g on & Headlight LE Ds | ↔ | No LEDs |

NOTE: If vacuum still does not operate properly, contact Customer Service

ADDITIONAL ACCESSORIES AVAILABLE

A Crevice Tool

B Duster Crevice Tool

C Flexible Crevice Tool

D Anti-Allergen Brush

E Multi-Surface Tool

F Motorised Hand Tool

G Wide Upholstery Tool

H Car Detail Kit

I Replacement Battery

J Hand Vacuum Pre-Motor Filter

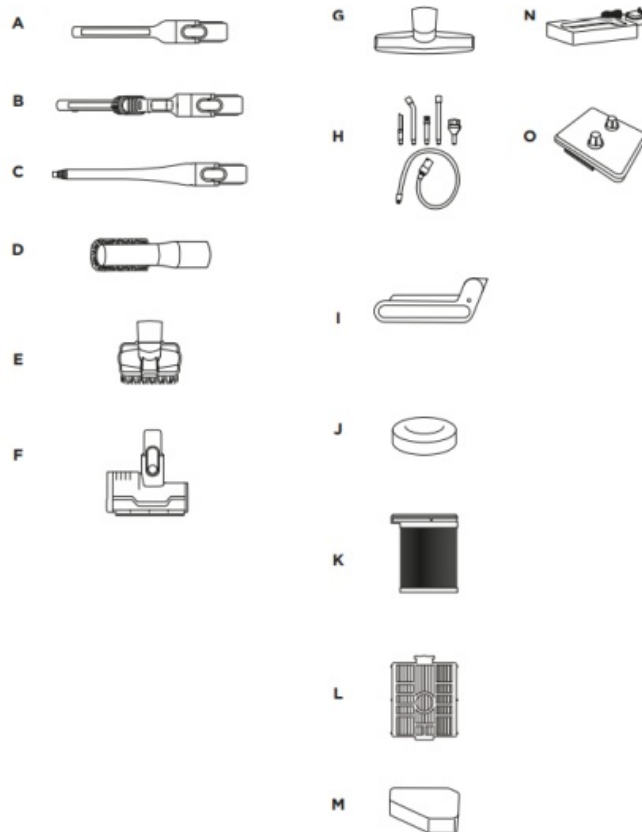
K Hand Vacuum Post-Motor Anti-Allergen Filter

L Auto-Empty Dock Post-Motor Filter

M Auto-Empty Exhaust Foam Filter

N Battery Charging Sleeve

O Accessory Dock



NOTE: Not all accessories come with all units. Please see the Quick Start Guide on the packaging box for your unit's configuration. To order additional accessories, visit sharkclean.eu.

Shark | NINJA

FIVE (5) YEAR LIMITED WARRANTY

When a consumer buys a product in Europe, they get the benefit of legal rights relating to the quality of the product (your “statutory rights”). You can enforce these rights against your retailer. However, at Shark” we are so confident about the quality of our products that we give the original product owner an additional manufacturer’s guarantee of up to five years (2 year standard plus 3 on registration). These terms and conditions relate to our manufacturer’s guarantee only your statutory rights are unaffected.

The conditions below describe the prerequisites and scope of our guarantee. They do

not affect your statutory rights or the obligations of your retailer and your contract with them.

The Lithium ION power pack is not covered by the 5 year guarantee (see battery guarantee below)

Shark Guarantees

A household appliance like a vacuum cleaner constitutes a sizeable investment. Your new machine needs to work properly for as long as possible. The guarantee it comes with is an important consideration and reflects how much confidence the manufacturer has in its product and manufacturing quality.

Every Shark machine comes with a free parts and labour guarantee. You'll find online support at www.sharkclean.eu

How do I register my extended Shark'' guarantee?

You can register your guarantee online within 28 days of purchase. To save time, you'll need the following information about your machine:

Date you purchased the machine (receipt or delivery note)

To register online, please visit www.sharkclean.eu/register-guarantee. Products purchased directly from Shark are automatically registered.

IMPORTANT

Both the 2 years and the extended 3 years guarantee will only cover your product from the date of purchase.

Please keep your receipt at all times. Should you need to use your guarantee we will need your receipt to verify the information you have supplied to us is correct. The inability to produce a valid receipt may invalidate your guarantee.

What are the benefits of registering my free Shark guarantee?

When you register your guarantee we'll have your details to hand if we ever need to get in touch. If you further agree to receive communications from us, you can also receive tips and advice on how to get the best out of your Shark vacuum and hear the latest news about new Shark technology and launches.

If you register your guarantee online, you'll get instant confirmation that we've received your details.

How long are new Shark machines guaranteed for?

Our confidence in our design and quality control means that your new Shark vacuum cleaner is guaranteed for a total of up to five years (2 years plus 3 years on registration).

What is covered by the free Shark guarantee?

Repair or replacement (at Shark's discretion) of your Shark" machine, including all parts and labour. A Shark" guarantee is in addition to your legal rights as a consumer.

What is not covered by the free Shark guarantee?

1. Blockages – for details of how to unblock your vacuum cleaner, please refer to the instructions.
2. Normal wear and tear such as brush bar, fuse, belt, batteries, hose etc.
3. Accidental damage, faults caused by negligent use or care, misuse, neglect, careless operation or handling of the vacuum cleaner which is not in accordance with the Shark instructions supplied with your machine.
4. Use of the vacuum cleaner for anything other than normal domestic household purposes.
5. Use of parts not assembled or installed in accordance with the operating instructions.
6. Use of parts and accessories which are not Shark Genuine Components.
7. Faulty installation (except where installed by Shark").
8. Repairs or alterations carried out by parties other than Shark or its agents.
9. The Lithium ION power pack battery. Please see below for battery guarantee.

What happens when my guarantee runs out?

Shark does not design products to last for a limited time. We do appreciate that there may be a desire for our customers to want to repair their vacuum cleaners after the guarantee has lapsed. In this case please contact our Freephone customer service help line.

Where can I buy genuine Shark spares and accessories?

Shark spares and accessories are developed by the same engineers who developed your Shark vacuum. You'll find a full range of Shark" spares, replacement parts and accessories for all Shark" machines at www.sharkclean.eu. Please remember that damage caused by use of non-Shark spares is not covered under your guarantee.

TWO (2) YEAR LIMITED BATTERY GUARANTEE

When a consumer buys a product in Europe, they get the benefit of legal rights relating to the quality of the product (your "statutory rights"). You can enforce these rights against your retailer. However, at Shark" we are so confident about the quality of our products that we give you an additional manufacturer's guarantee of two years for the

battery. These terms and conditions relate to our manufacturer's guarantee only your statutory rights are unaffected.

Every Shark machine comes with a free parts and labour guarantee. You'll find online support at www.sharkclean.eu/register-guarantee

IMPORTANT

- The manufacturer's guarantee covers your battery for 2 years starting on the date of delivery.
- Please keep your receipt at all times. Should you need to use your guarantee we will need your receipt to verify the information you have supplied to us is correct. The inability to produce a valid receipt may invalidate your guarantee.

How long are new Shark batteries guaranteed for?

Our confidence in our design and quality control means that your new Shark vacuum cleaner battery is guaranteed for a total of two years.

What is covered by the free Shark guarantee?

Repair or replacement of your Shark™ machine (at Shark's discretion to decide whether to replace or repair) including all parts and labour. A Shark guarantee is in addition to your legal rights as a consumer.

What is not covered by the free Shark guarantee?

1. Normal wear and tear of parts which require regular maintenance and/or replacement to ensure the proper functioning of your unit.
2. Accidental damage, faults caused by negligent use or care, misuse, neglect, careless operation or handling of the vacuum cleaner which is not in accordance with the Shark Instructions supplied with your machine.
3. Use of the battery for anything other than normal domestic household purposes.
4. Use of parts not assembled or installed in accordance with the instructions.
5. Use of parts and accessories which are not Shark spares.
6. Faulty installation (except where installed by Shark™).

Where can I buy genuine Shark spares and accessories?

Shark spares and accessories are developed by the same engineers who developed your Shark™ vacuum. You'll find a full range of Shark spares, replacement parts and accessories for all Shark machines at www.Sharkclean.eu. Please remember that

damage caused by use of non-Shark spares is not covered under guarantee.

NOTES



ODOUR NEUTRALISER SPECIFICATIONS

5. Product Name: Odour Neutraliser Cartridge

6. Manufacturer: Shark Ninja 89 A Street, Needham, MA 02494

7. Weight: 17.4g / 0.61oz

8. Ingredients: Solid SM composite polymer C17 + fragrance SE 446676

Illustrations may differ from actual product. We are constantly striving to improve our products; therefore the specifications contained herein are subject to change without notice. © 2024 SharkNinja Operating LLC. FLOOR DETECT and SHARK are registered trademarks of SharkNinja Operating LLC in the European Union.

SharkNinja Europe Limited,

3150 Century Way,

Thorpe Park,

Leeds

LS15 8ZB, UK

SharkNinja Germany GmbH,

Rotfeder-Ring 9,

60327 Frankfurt am Main,

Germany

IP3000EU_Series_IB_MP_240729_Mv1

GEDRUCKT IN CHINA

Documents / Resources



Owner's Manual

References

- Shark

Leave a comment

Comment *

Name

Email

Website

☐ Save my name, email, and website in this browser for the next time I comment.

Post Comment

Search:

e.g. whirlpool wrf535swhz

Search

[Manuals+](#) | [Upload](#) | [Deep Search](#) | [Privacy Policy](#) | [@manuals.plus](#) | [YouTube](#)

This website is an independent publication and is neither affiliated with nor endorsed by any of the trademark owners. The "Bluetooth®" word mark and logos are registered trademarks owned by Bluetooth SIG, Inc. The "Wi-Fi®" word mark and logos are registered trademarks owned by the Wi-Fi Alliance. Any use of these marks on this website does not imply any affiliation with or endorsement.