



[Home](#) » [Shark](#) » **Shark HD400SLUK Flex Style Air Styling and Drying System User Guide** 

Contents [[hide](#)]

- 1 [Shark HD400SLUK Flex Style Air Styling and Drying System](#)
- 2 [Product Information](#)
- 3 [Product Usage Instructions](#)
- 4 [How it works](#)
- 5 [Transform from styler to dryer](#)
- 6 [Get to know your stylers](#)
- 7 [Change the way you curl](#)
- 8 [Turn up the volume](#)
- 9 [Round Brush blowout](#)
- 10 [Perfect sleek, straight styles](#)
- 11 [Go from frizzy to glossy](#)
- 12 [Master smooth, stylish blow-drys](#)
- 13 [Define your natural curls](#)
- 14 [Stretch your natural hair](#)
- 15 [FAQ](#)
- 16 [Documents / Resources](#)
 - 16.1 [References](#)

Shark

Shark HD400SLUK Flex Style Air Styling and Drying System



Product Information

Specifications

- **Brand:** Shark FlexStyle
- **Model:** Air Styling & Drying System
- **Features:** Cool Shot, Styler Attachment, Airflow settings, Temperature settings, Hinge Lock

Product Usage Instructions

How It Works

Press and hold Cool Shot to seal the hair cuticle and lock in your styles.

Styler Attachment

1. Push styler onto the nozzle until it clicks.
2. Slide lock down to unlock the styler for removal.

Airflow and Temperature Settings

- **Airflow settings:** Low / Medium / High
- **Temperature settings:** No Heat / Low / Medium / High

Hinge Lock

Slide the lock down and rotate the nozzle left to switch to the hair dryer mode.

Styling Wand Mode / Hair Dryer Mode

- Attach in Wand Mode for styling.
- Attach in Dryer Mode for drying.

Curling Instructions

1. Begin with slightly damp hair, 80-90% dry.
2. Detangle and section top and bottom of hair.
3. Choose the appropriate barrel size for the desired curl.
4. Hold a small section of hair with ends lined up with the arrow on the barrel.
5. Curl with the wand upright and hair in front of the curler.

Get to know your Shark FlexStyle Air Styling & Drying System.



How it works



TIP: All 3 red Temperature lights will be OFF when Cool Shot is engaged.

Transform from styler to dryer

Rotates to change modes



Get to know your stylers

1. Auto-Wrap Curlers

Hassle-free curls in seconds

- Uses air power to automatically wrap hair around the barrel, from ends to roots
- 2 curler barrels create curls in both directions

2. Oval Brush

Smooths & defrizzes, adds volume & bounce

- Smoothing bristles—on the rounded edge for grabbing, smoothing, and shining
- Detangling bristles—in the middle for combing and detangling

3. Round Brush

Smooths & defrizzes, adds volume & bounce

- Smoothing bristles—on the rounded edge for grabbing, smoothing, and shining
- Detangling bristles—in the middle for combing and detangling
- Best for bangs and short/medium length hair

4. Paddle Brush

Straighten & smooth all at once

Smoothing bristles—to create added tension for straightening, smoothing, and shining

Detangling bristles—for combing and detangling

5. FrizzFighter Finishing Tool

Reduces frizz and flyaways vs. air dried

Uses Coanda Technology to automatically attract frizz and flyaways and remove them in seconds

6. Styling Concentrator

Style & dry at the same time

Rotates for easy styling

7. Curl-Defining Diffuser

Fast, even drying from root to tip

Use the lever to extend or retract the prongs for a customized airflow

Extended prongs—for longer, thicker hair or reaching and lifting the roots

Retracted prongs—for shorter, finer hair or if the ends need a little extra air

8. Wide-Tooth Comb

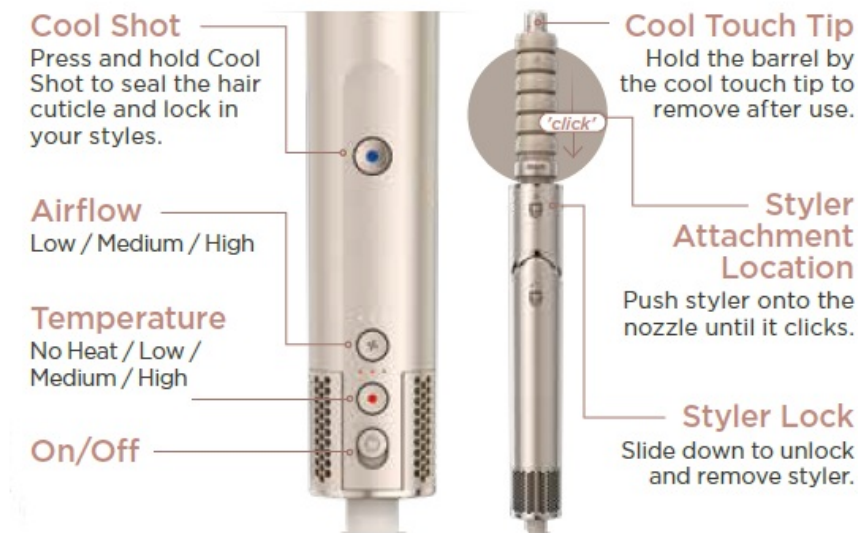
Stretch & lengthen from roots to ends

Uses two rows and two lengths of teeth to stretch and elongate natural curls and coils

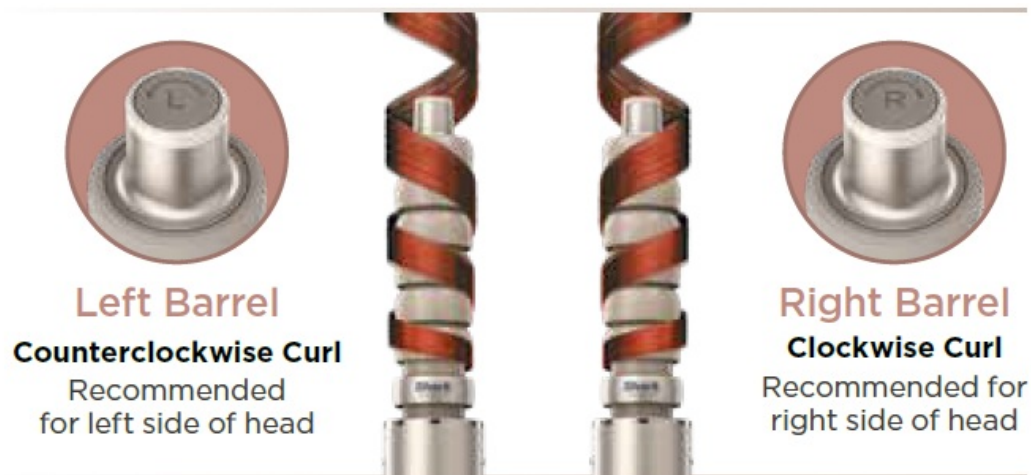


Change the way you curl

Recommended Setting:  air  |  temp 



Choosing your barrel



Coanda technology automatically wraps hair around the barrel for easy, hassle free curls in seconds.

Curl in 5 easy steps

1. Begin with slightly damp hair, 80-90% dry. Detangle and section top and bottom.

Choose your barrel according to the side you want to curl.

Pro Tip: Hair that is too wet will be more difficult to curl.

2. Hold the middle of a small section of hair and allow at least 10cm of your ends to line up with the arrow on the barrel. Make sure the wand is upright and your hair is in front of the curler.

Pro Tip: Smaller sections of hair allow for easier wrapping.



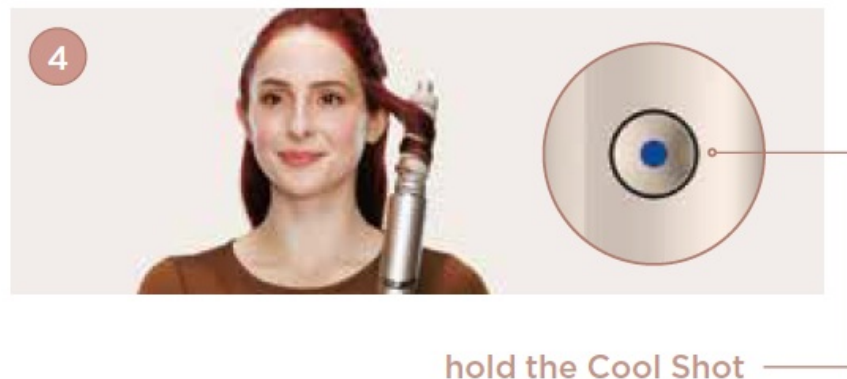
3. Turn on high heat and high air flow. The airflow will automatically pick up the ends of your hair. Move the wand towards your head as your hair wraps around the curler. Continue to use your hand to guide your hair through the barrel until it feels secure. Hold for 10 seconds.

Pro Tip: Hair will secure after 2-3 wraps around the barrel.



4. With hair securely wrapped around the barrel as shown in step 3, press and hold the Cool Shot button for 10 seconds to lock in your curl.

Pro Tip: Using Cool Shot allows for longer-lasting curls.



5. Turn the unit off and pull the barrel straight down to reveal your perfect curl!

Pro Tip: Use a setting or holding spray as desired for an even longer lasting look.



Scan the QR code to learn more on how to get the perfect curl!



Turn up the volume

Recommended Setting:



For additional help and tips based on your hair type, scan the QR code to watch the how-to video and to visit our FAQ page!



1. Begin with rough-dried or towel-dried hair.

Pro Tip: Apply hair products or styling agents as desired.

2. Section your hair as desired. For voluminous blowouts, start by placing the round brush under the hair close to the roots.

Pro Tip: For even more volume, hold the brush under your hair close to the roots for 3 seconds before brushing outward.



3. Roll the brush outward from the roots to the ends to engage the bristles and gently grip the hair.

Pro Tip: For extra volume, brush your hair in an upward direction.



4. Repeat on remaining sections until hair has been dried into a bouncy, voluminous style.

Pro Tip: Set your style and help reduce frizz by pressing the Cool Shot button.




Pro Tip: Set your style and help reduce frizz by pressing the Cool Shot button.

Additional Styling Tips:

- If you have fine hair, try reducing the airflow to help cut down on frizz.
- If you have thick hair, try increasing the heat for even faster results.
- If you have curly or coily hair, try increasing the heat to help achieve a straighter style.
- For an added curl, place the brush under the ends of the hair and roll the brush toward the roots to engage the bristles. Twist the hair off the brush to release the curl.

Round Brush blowout

Recommended Setting:  air  |  temp 

Round Brush



For additional help and tips based on your hair type, scan the QR code to watch the how-to video and to visit our FAQ page!



1. Begin with rough-dried or towel-dried hair.

Pro Tip: Apply hair products or styling agents as desired.

2. Section your hair as desired. For voluminous blowouts, start by placing the round brush under the hair close to the roots.

Pro Tip: For even more volume, hold the brush under your hair close to the roots for 3 seconds before brushing outward.



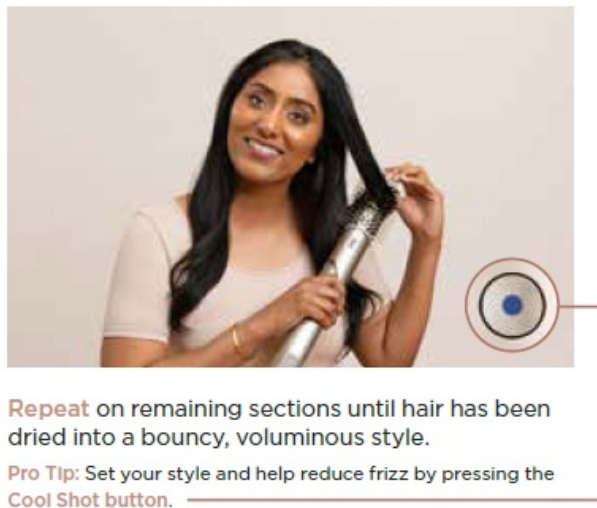
3. Roll the brush outward from the roots to the ends to engage the bristles and gently grip the hair.

Pro Tip: For extra volume, brush your hair in an upward direction.



4. Repeat on remaining sections until hair has been dried into a bouncy, voluminous style.

Pro Tip: Set your style and help reduce frizz by pressing the Cool Shot button.











Repeat on remaining sections until hair has been dried into a bouncy, voluminous style.

Pro Tip: Set your style and help reduce frizz by pressing the **Cool Shot button**.

Additional Styling Tips:

- If you have short hair, try reducing the airflow to help cut down on frizz and flyaways.
- If you have thick hair, try increasing the heat for even faster results.
- If you have curly or coily hair, try increasing the heat to help achieve a straighter style.
- For an added curl, place the brush under the ends of the hair and roll the brush toward the roots to engage the bristles. Twist the hair off the brush to release the curl.

Perfect sleek, straight styles

Recommended Setting:  air    |    temp 

Paddle Brush



For additional help and tips based on your hair type, scan the QR code to watch the how-to video and to visit our FAQ page!



1. Begin with rough-dried or towel-dried hair.

Section your hair as desired.

Pro Tip: Apply hair products or styling agents as desired.

2. For a smooth, sleek style, start by placing the brush close to the roots to engage the detangling bristles.



3. Brush down your hair, making sure to engage the smoothing bristles, and gently grip the hair.

Pro Tip: Hold the ends of your hair while brushing for added tension and smoothing.



4. Repeat on remaining sections until hair has been dried into a smooth, straight style.

Pro Tip: Set your style and help reduce frizz by pressing the Cool Shot button.



Repeat on remaining sections until hair has been dried into a smooth, straight style.

Pro Tip: Set your style and help reduce frizz by pressing the **Cool Shot button**.

Additional Styling Tips:

- If you have fine hair, try reducing the airflow to help cut down on frizz.
- If you have thick hair, try brushing smaller sections for smoother results.
- If you have curly or coily hair, try repeatedly brushing smaller sections and increasing the heat to help achieve a straighter style.
- For added volume, place the brush under the hair section close to the roots and brush upward using a rounding motion.

Go from frizzy to glossy



FrizzFighter Finishing Tool



For additional help and tips based on your hair type, scan the QR code to watch the how-to video and to visit our FAQ page!



1. Begin with completely dry hair that has been styled with a concentrator or style brush.

Pro Tip: Works best on straight or straightened hair.

2. Start at the top of your head, close to the roots.

Hold until the hair attracts.



3. Slowly glide the FrizzFighter Finishing Tool down the length of your hair. Gently touch your hair with the tool—no need to press it against your head.

4. Repeat around your head.



Additional Styling Tips:

- If you have thinner/finer hair you can decrease the airflow to help reduce flyaways.
- If you have thinner/finer hair you can decrease the heat.

Master smooth, stylish blow-drys

Recommended Setting:  air  |  temp 

Styling Concentrator



For additional help and tips based on your hair type, scan the QR code to watch the how-to video and to visit our FAQ page!



1. Begin with damp hair. Gentle-dry with the concentrator nozzle, applying airflow from the roots to the ends.

Pro Tip: Apply hair products or styling agents as desired.

2. When excess moisture is gone, section your hair as desired and start styling with a round brush.

Rotate the concentrator so airflow is always in line with the round brush.



3. Apply heat in a downward motion for smoothing.

Pro Tip: Apply heat at ends for shaping and bending.



4. Finish styling by setting shape at ends with Cool Shot.






Finish styling by setting shape at ends with **Cool Shot**.

Additional Styling Tips:

- If you have fine hair, try reducing the airflow to help cut down on frizz.
- To create a curl, wrap your hair around a round brush and dry it in place using the concentrator
- For added volume, place a round brush under the roots and brush upwards while drying with the concentrator.
- For an added curl at the ends, roll the ends of the hair onto a round brush and dry in place using the concentrator.

Define your natural curls

Recommended Setting:  air  |  temp 

Curl-Defining Diffuser



For additional help and tips based on your hair type, scan the QR code to watch the how-to video and to visit our FAQ page!



1. Begin with towel-dried hair. Working around your head, bunch curls from ends between the petals of the diffuser.

Pro Tip: Apply curly hair products or styling agents as desired to wet hair.

2. Bring the diffuser up to the roots. Pause and hold.



3. For more volume, slide the lever to extend prongs to lift roots higher.

Pro Tip: Gather hair in diffuser with prongs retracted, then extend them when you reach the roots to increase grab and maximize airflow.



4. If desired, flip upside down and bunch from below for extra curl and volume.

Pro Tip: Keep the integrity of your natural curls by switching between Low temp and the Cool Shot button.







If desired, **flip upside down** and **bunch from below** for extra curl and volume.

Pro Tip: Keep the integrity of your natural curls by switching between Low temp and the **Cool Shot button**.

Additional Styling Tips:

- Apply curly hair products to wet hair before drying to help define your curls and cut down on frizz.
- If you have thick hair, try increasing the heat for even faster results.

Stretch your natural hair

Recommended Setting:  air  |  temp 

Wide-Tooth Comb



For additional help and tips based on your hair type, scan the QR code to watch the how-to video and to visit our FAQ page!



1. Begin with towel dried hair. Section your hair as desired. Make sure to detangle each section to help prevent snagging.

Pro Tip: Apply your favorite styling products as desired.

2. Slowly comb your hair from the roots to the ends.

Continue combing your section until hair has been stretched and dried.

Pro Tip: Hold the ends of your hair while combing for added tension and length.



3. Repeat on remaining sections. Press the Cool Shot button to lock in your style.

Pro Tip: Detach and re-orient the comb as needed to easily reach all areas on your head.



Repeat on remaining sections. Press the **Cool Shot button** to lock in your style.

4. Continue styling your stretched hair as desired.



Additional Styling Tips:

- Try using the comb while in styling wand mode for more styling versatility.
- For added volume at the roots, comb through hair in an upward direction.
- Decrease the heat to help maintain hair texture while stretching.

Looking for more inspiration, tips and tricks?

Go to qr.sharkclean.com/FlexstyleTips or scan the QR code.



© 2024 SharkNinja Operating LLC. All rights reserved.
SHARK and SHARK FLEXSTYLE are registered trademarks in the United Kingdom of SharkNinja Operating LLC.
HD446SLUK_StyleGuide_MP_241024_Mv1

FAQ

Q: How do I change from styler to dryer mode?

A: Slide the lock down and rotate the nozzle left to switch to the hair dryer mode.


Q: How do I remove an accessory after use?

A: Hold the Cool Touch location to remove each accessory after use.

Q: How do I choose the right barrel size for curling?

A: Choose your barrel according to the side you want to curl,ensuring at least 10cm of ends line up with the arrow on the barrel.

Documents / Resources

	<p>Shark HD400SLUK Flex Style Air Styling and Drying System [pdf] User Guide</p> <p>HD400SLUK Flex Style Air Styling and Drying System, HD400SLUK, Flex Style Air Styling and Drying System, Air Styling and Drying System, and Drying System</p>
---	---

References

- [User Manual](#)

■ Shark

✎ Air Styling and Drying System, and Drying System, Drying System, Flex Style Air Styling and Drying System, HD400SLUK, HD400SLUK Flex Style Air Styling and Drying System, Shark

Leave a comment

Your email address will not be published. Required fields are marked *

Comment *

Name

Email

Website

☐ Save my name, email, and website in this browser for the next time I comment.

Post Comment

Search:

Search

[Manuals+](#) | [Upload](#) | [Deep Search](#) | [Privacy Policy](#) | [@manuals.plus](#) | [YouTube](#)

This website is an independent publication and is neither affiliated with nor endorsed by any of the trademark owners. The "Bluetooth®" word mark and logos are registered trademarks owned by Bluetooth SIG, Inc. The "Wi-Fi®" word mark and logos are registered trademarks owned by the Wi-Fi Alliance. Any use of these marks on this website does not imply any affiliation with or endorsement.

