



Shark HD400 FlexStyle Air Styling and Drying System Instruction Manual

[Home](#) » [Shark](#) » Shark HD400 FlexStyle Air Styling and Drying System Instruction Manual 

Shark

SAFETY
FlexStyle

SAFETY | WARRANTY | TROUBLESHOOTING

Contents

- [1 IMPORTANT SAFETY INSTRUCTIONS](#)
- [2 OPERATING INSTRUCTIONS](#)
- [3 TROUBLESHOOTING & ERROR CODES](#)
- [4 TWO \(2\) YEAR LIMITED WARRANTY](#)
- [5 Documents / Resources](#)
 - [5.1 References](#)
- [6 Related Posts](#)

IMPORTANT SAFETY INSTRUCTIONS

When using electrical appliances, especially when children are present, basic safety precautions should always be followed, including the following:

FOR HOUSEHOLD USE ONLY

READ ALL INSTRUCTIONS BEFORE USING—SAVE THESE INSTRUCTIONS

WARNINGS: KEEP AWAY FROM WATER

DANGER—

As with most electrical appliances, electrical parts are electrically live even when the switch is off.



WARNING

To reduce the risk of death by electric shock:

1. Always unplug the unit immediately after using.
2. Do not use while bathing.
3. Do not place or store appliance where it can fall or be pulled into a tub or sink.
4. Do not place in or drop into water or other liquid.
5. If an appliance falls into water, unplug the unit immediately. Do not reach into the water.



WARNING

To reduce the risk of burns, electrocution, fire, or injury to persons:

1. An appliance should never be left unattended when plugged in.
2. Close supervision is necessary when this appliance is used by, on, or near children or individuals with certain disabilities.
3. Use this appliance only for its intended use as described in this manual. Do not use attachments not recommended by the manufacturer.
4. Never operate this appliance if it has a damaged cord or plug, if it is not working properly, or if it has been dropped, damaged, or dropped into water.
5. Keep the cord away from heated surfaces.
6. Do not wrap the cord around the appliance.
7. Never block the air openings of the appliance or place it on a soft surface, such as a bed or couch, where the air openings may be blocked. Keep the air openings free of lint, hair, and the like.
8. Never use while sleeping.
9. Never drop or insert any object into any opening.
10. Do not use outdoors or operate where aerosol (spray) products are being used or where oxygen is being administered.
11. Do not use an extension cord with this appliance.
12. Do not direct hot air toward eyes or other heatsensitive areas.
13. Attachments may be hot during use. Allow them to cool before handling.
14. Do not place appliance on any surface while it is operating.
15. While using the appliance, keep your hair away from the air inlets.
16. Do not operate with a voltage converter.

SAVE THESE INSTRUCTIONS

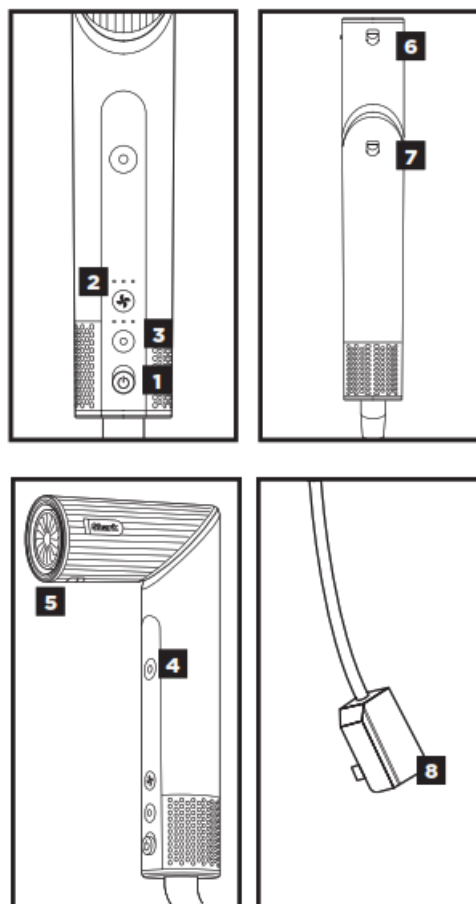
OPERATING INSTRUCTIONS

1. Turn the styler on and off.
2. Adjust the airflow. Pressing the button allows you to choose a low, medium, or high airflow.
3. Adjust the temperature. Pressing the button allows you to choose no heat, low, medium or high temperature.
4. Press and hold the Cool Shot button for a cool burst of air to set your style.
5. To attach any accessories included with your model, press them into the nozzle outlet. You will know they are properly attached when they click in place.
6. To remove any accessories included in your model, slide the lock down and lift the accessory off of the nozzle by holding onto the touchpoints identified in your Style Guide.

7. To change from styling wand mode to hair dryer mode, slide down the lock and rotate the nozzle left. Keep rotating the nozzle until it clicks into place in hair dryer mode. To change from hair dryer mode to styling wand mode, slide down the lock and rotate the nozzle right.
8. Press the ALCI button to reset the dryer. See Troubleshooting & Error Codes for more information.

For further operating instructions, please consult the Styling Guide or scan the QR code.
Storage, Cord Safety, and Maintenance/Cleaning:

- Ensure the cord is not knotted, twisted, or wrapped around any nearby objects when in use.
- Store the unit in a dry location away from water and other heat sources.
- Regularly clean the filter at the bottom of the unit. To clean the filter, first slide the filter cover off the bottom of the unit. Then use a new toothbrush to brush off any dust or debris on the filter. Once the filter is clean, slide the filter cover back on the unit until it clicks in place.



TROUBLESHOOTING & ERROR CODES

MAINTENANCE/CLEANING

Reduction in Airflow or Overheating

A change in airflow or air power, airflow blockages, and/or visible buildup on the inlet at the bottom of the unit indicates your unit needs to be cleaned. We recommend using a new toothbrush to clean off the filter at the bottom of the unit.

ALCI OPERATION

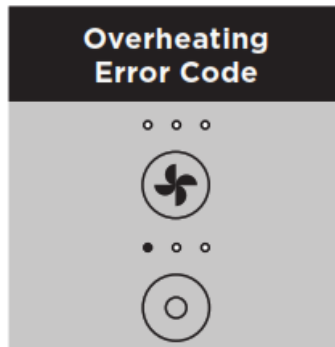
Electricity flickers or trips circuit breaker during use. This dryer is equipped with an Appliance Leakage Circuit Interrupter (ALCI), a safety feature that renders it inoperable under abnormal conditions. Should the dryer turn off in use, press the red Reset button on the plug and the dryer should function normally. If the dryer does not reset, please check your circuit breaker. If the issue persists, ensure there are no other appliances plugged in within the

room where the dryer is being used. Do not use the dryer with a power strip.

OVERHEATING

Hair dryer is overheating or shuts off.

This unit is equipped with a temperature-protective thermostat. If for some reason your hair dryer overheats, the thermostat will automatically turn the unit off. To prevent power-down recurrence, unplug the hair dryer and set it aside to cool, or cool down using the cool shot button during use. Overheating may result if the unit is powered on for a long duration, or can indicate a blockage or dust buildup. We recommend using a new toothbrush to clean off the filter at the bottom of the unit. If overheating continues to occur, contact Customer Service at 855-522-0912.



<https://qr.sharkclean.com/flexstyle?qr=1>

If you are experiencing a different error code, please scan the QR code for additional troubleshooting or contact Customer Service at 855-522-0912.

TWO (2) YEAR LIMITED WARRANTY

The Two (2) Year Limited Warranty applies to purchases made from authorized retailers of SharkNinja Operating LLC. Warranty coverage applies to the original owner and to the original product only and is not transferable. SharkNinja warrants that the unit shall be free from defects in material and workmanship for a period of two (2) years from the date of purchase when it is used under normal household conditions and maintained according to the requirements outlined in the Owner's Guide, subject to the following conditions and exclusions:

What is covered by this warranty?

1. The original unit and/or non-wearable parts deemed defective, in SharkNinja's sole discretion, will be repaired or replaced up to two (2) years from the original purchase date.
2. In the event a replacement unit is issued, the warranty coverage ends six (6) months following the receipt date of the replacement unit or the remainder of the existing warranty, whichever is later. SharkNinja reserves the right to replace the unit with one of equal or greater value.

What is not covered by this warranty?

1. Normal wear and tear of wearable parts (such as accessories), which require regular maintenance and/or replacement to ensure the proper functioning of your unit, are not covered by this warranty. Replacement parts are available for purchase at sharkclean.com.

2. Any unit that has been tampered with or used for commercial purposes.
3. Damage caused by misuse, abuse, negligent handling, failure to perform required maintenance (e.g., failure to keep the well of the motor base clear of food spills and other debris), or damage due to mishandling in transit.
4. Consequential and incidental damages.
5. Defects caused by repair persons not authorized by SharkNinja. These defects include damages caused in the process of shipping, altering, or repairing the SharkNinja product (or any of its parts) when the repair is performed by a repair person not authorized by SharkNinja.
6. Products purchased, used, or operated outside North America.

How to get service

If your appliance fails to operate properly while in use under normal household conditions within the warranty period, visit sharkbeauty.com for product care and maintenance self-help. Our Customer Service Specialists are also available at 855522-0912 to assist with product support and warranty service options, including the possibility of upgrading to our VIP warranty service options for select product categories. So we may better assist you, please register your product online at registeryourshark.com and have the product on hand when you call. SharkNinja will cover the cost for the customer to send in the unit to us for repair or replacement. A fee of \$20.95 (subject to change) will be charged when SharkNinja ships the repaired or replacement unit.

How to initiate a warranty claim

You must call 855-522-0912 to initiate a warranty claim. You will need the receipt as proof of purchase. We also ask that you register your product online at registeryourshark.com and have the product on hand when you call, so we may better assist you. A Customer Service Specialist will provide you with return and packing instruction information.

How state law applies

This warranty gives you specific legal rights, and you also may have other rights that vary from state to state. Some states do not permit the exclusion or limitation of incidental or consequential damages, so the above may not apply to you.



FCC WARNINGS

This unit has been tested and found to comply with FCC limits for Class B digital devices. These limits are designed to provide reasonable protection against harmful interference in a residential installation.

This unit generates, uses, and can radiate radio frequency energy, and if not installed and used in accordance with the instructions, may cause harmful interference to radio communications.

Operation of this unit may not cause harmful interference, and this unit must accept any interference received, including interference that may cause undesired operation.

To see if this unit interferes with radio or television reception, try turning it off and on.

To correct any interference:

1. Reorient or relocate the receiving antenna.
2. Increase the distance between the unit and the receiver.
3. Connect the unit to a different outlet than the receiver.
4. Consult the dealer or an experienced technician for help.

Caution: Any changes or modifications to this unit not expressly approved by the party responsible for compliance could void the user's authority to operate it.

For accessories and replacement parts, visit sharkclean.com/accessories

TECHNICAL SPECIFICATIONS

Voltage: 120V~, 60Hz

Power: 1300 Watts





<https://qr.sharkclean.com/flexstyle?qr=1>





SCAN QR CODE FOR FULL
INSTRUCTIONS, WARRANTY
INFORMATION, AND HOW-TOS

© 2022 Shark Ninja Operating LLC. SHARK FLEXSTYLE is a trademark of SharkNinja Operating LLC.
HD400_Series_Warning_Insert_E_F_S_MP_Mv3

Documents / Resources

	Shark HD400 FlexStyle Air Styling and Drying System [pdf] Instruction Manual HD400 FlexStyle Air Styling and Drying System, HD400, FlexStyle Air Styling and Drying System, Air Styling and Drying System, Drying System
	Shark HD400 FlexStyle Air Styling and Drying System [pdf] Instruction Manual HD400 FlexStyle Air Styling and Drying System, HD400, FlexStyle Air Styling and Drying System, Air Styling and Drying System, Drying System

References

-  [Sign In](#)
-  [Hair Dryer Brush - Hot Air Brush - Shark® FlexStyle™ | Shark Beauty](#)
-  [Vacuum Cleaners, Steam Mops, Hair Care & Air Purifiers | Shark Home Cleaning](#)
-  [Shark® Replacement Parts & Accessories | Vacuum & Steam Mop Parts and Accessories](#)