



Shark AV1010AE IQ Robot Vacuum Cleaner with XL Self-Empty Base User Guide

[Home](#) » [Shark](#) » Shark AV1010AE IQ Robot Vacuum Cleaner with XL Self-Empty Base User Guide 

Contents

- [1 Shark AV1010AE IQ Robot Vacuum Cleaner with XL Self-Empty Base](#)
- [2 Product Information](#)
- [3 Product Usage Instructions](#)
- [4 WHAT TO EXPECT](#)
- [5 SETUP](#)
- [6 OPTIMIZING YOUR HOME FOR CLEANING](#)
- [7 CONNECTING THE SHARKCLEAN™ APP AND ROBOT](#)
- [8 Troubleshooting](#)
- [9 Documents / Resources](#)
 - [9.1 References](#)

Shark IQ ROBOT
SELF-EMPTY XL

Shark AV1010AE IQ Robot Vacuum Cleaner with XL Self-Empty Base



Product Information

The product is a robot vacuum cleaner designed to clean your home autonomously. It has the ability to map your home and optimize its performance over time. The vacuum cleaner comes with a charging base, which needs to be set up in a location with a good Wi-Fi signal. The robot can be controlled and monitored through the SharkClean™ app, which can be downloaded from the app store. The robot has side brushes to assist in cleaning and an indicator light that shows the charging status.

Product Usage Instructions

1. **Scheduling:** To have a constant state of cleaning, set up a cleaning schedule in the SharkClean™ app.
2. **Avoid Moving the Robot or Base:** While the robot is cleaning, do not pick it up or move it, and avoid moving the charging base. This could impact the robot's ability to map your home.
3. **Lighting Conditions:** For best results, run the robot in well-lit conditions. If running the robot at night, keep the lights on in the areas to be cleaned.
4. **Checking Base Fill Level:** As the robot cleans, regularly check the fill level of its bin. Home environments vary, and the bin may fill up quicker in some homes.
5. **Doorways and Thresholds:** Ensure that doorways and thresholds are clear for the robot to move through easily.
6. **Prepping the Robot:** Before using the robot, make sure to prep it by attaching the side brushes.
7. **Setting Up the Base:** Find a permanent location for the base and place it against a wall with a good Wi-Fi signal. Remove any objects that are closer than 3 ft. from either side of the base or closer than 5 ft. from the

front. Set up the base on a hard floor for best results.

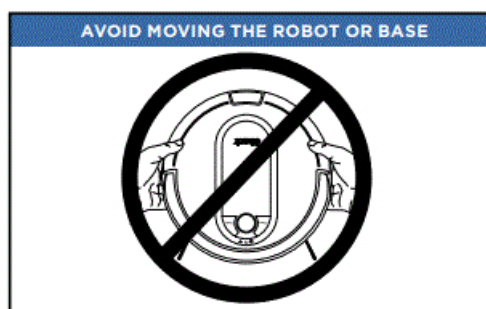
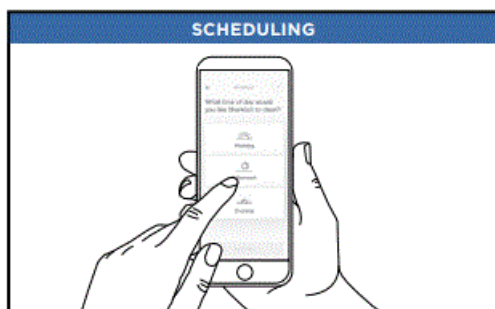
8. **Charging the Robot:** Ensure that the power button on the robot is in the (I) ON position. Place the robot on the base with its backside against the base to charge for 6 hours. The indicator light on the base will turn green when it has power. When charging begins, the robot will beep and the dock light will turn blue. Note that the robot will make a loud noise when it empties debris each time it returns to the dock, which is normal.
9. **Optimizing Your Home for Cleaning:** Clear cords and remove small objects from floors. Open interior doors in rooms you want the robot to clean.
10. **Connecting the SharkClean™ App and Robot:** Download the SharkClean™ app from the app store. Follow the steps in the app to create an account, activate the robot's Wi-Fi, select the robot (Apple iOS only), and connect to your home Wi-Fi.

If you have any questions or need support, you can call 1-888-228-5531 for robot support.

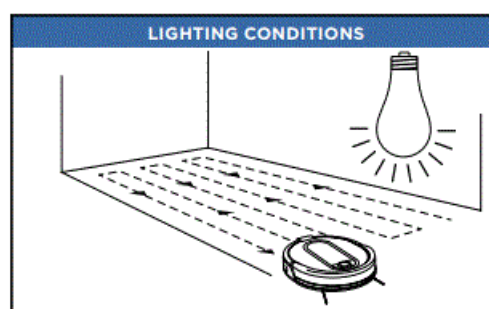
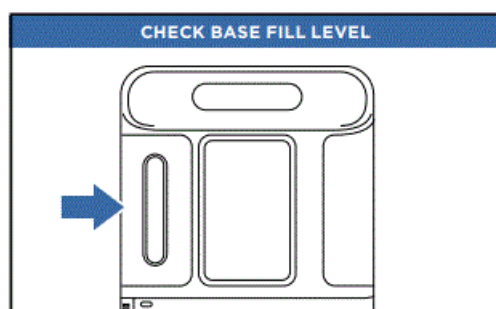
For additional help, visit sharkclean.com/support. To set up voice control using Google Home or Amazon Alexa, visit sharkclean.com/app for instructions.

WHAT TO EXPECT

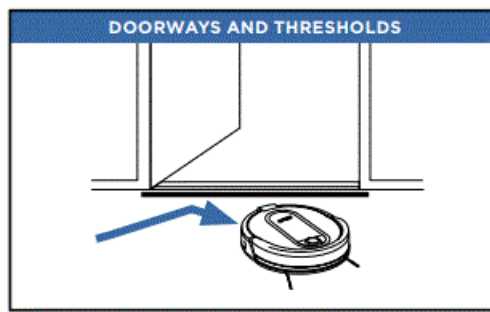
As your robot learns your home, you may need to make some small adjustments to optimize performance.



- For a constant state of clean, set up a cleaning schedule in the app.
- While your robot is cleaning, do not pick it up and move it, or move the charging base—this could impact the robot's ability to map your home.
- During the first few weeks, your robot will empty more often than usual. Check the fill level regularly.
- Home environments vary, and the bin may fill up quicker in some homes.
- For best results, run your robot in well-lit conditions. If you run your robot at night, keep the lights on in the areas to be cleaned

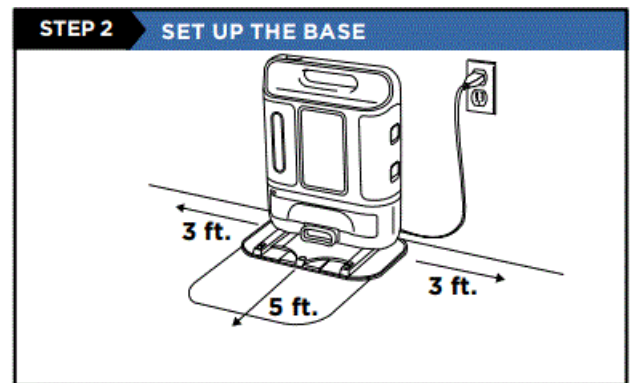
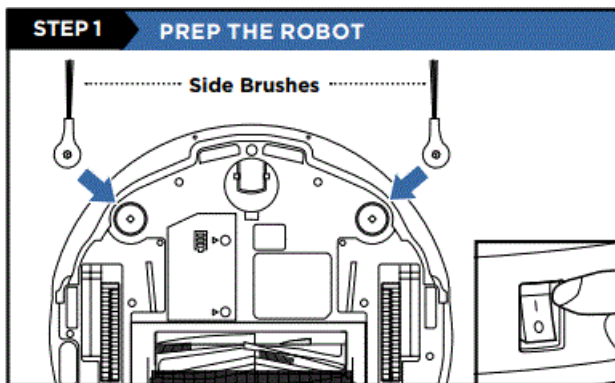


- Your robot can easily climb over most thresholds, but if one is higher than 7/8ths of an inch, block it off with a BotBoundary® strip.

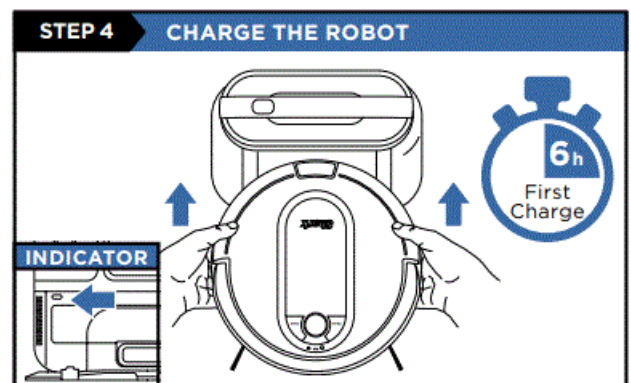
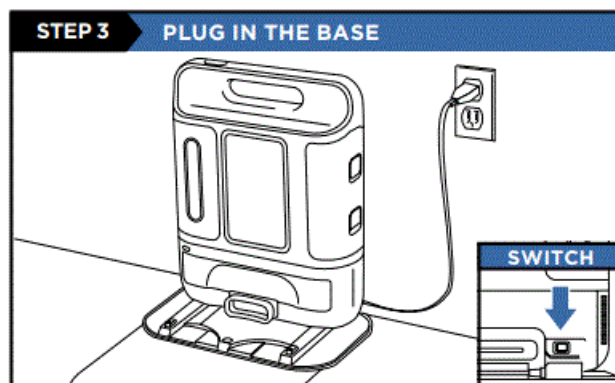


SETUP

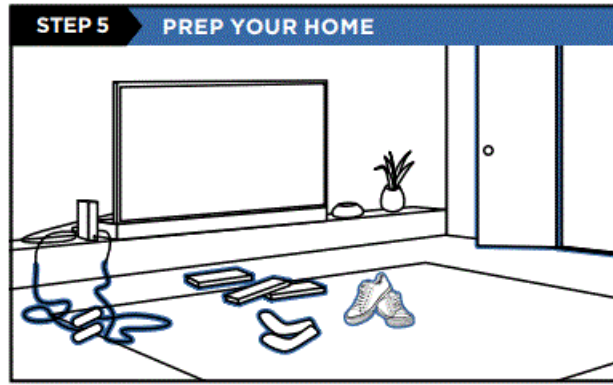
- Remove protective film from robot and base.
- Attach side brushes located in the red packaging.
- The power button on the side of the robot must be in the (I) ON position.
- Find a permanent location for the base. Place it with its back against a wall, in an area with a good Wi-Fi signal. Remove any objects that are closer than 3 ft. from either side of the base, or closer than 5 ft. from the front. For best results, set up base on hard floor.



- Plug cord into electrical outlet.
- Make sure the power switch on the back of the dock is in the ON position.
- The Indicator Light will illuminate green when base has power.
- Place robot on base to charge for 6 hours. Power button must be in the (I) ON position and the robot must be aligned correctly, with its BACK side against the base. When charging begins, the robot will BEEP and the DOCK light will turn BLUE.
- **NOTE:** Every time the robot returns to the dock, it will make a loud noise as it empties debris. This is normal and no cause for concern.



OPTIMIZING YOUR HOME FOR CLEANING



- Clear cords and remove small objects like toys, clothing, or drapes from floors. Open interior doors in rooms you want your robot to clean.


CONNECTING THE SHARKCLEAN™ APP AND ROBOT

- Search SharkClean in the app store and download to get started.

STEP 1 Create An Account

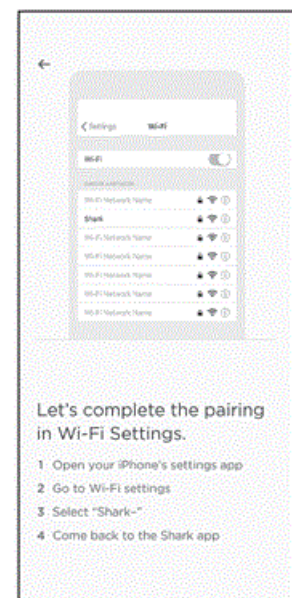
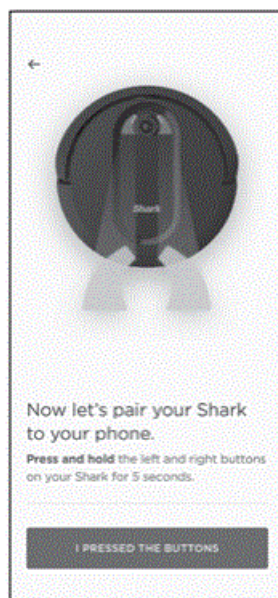
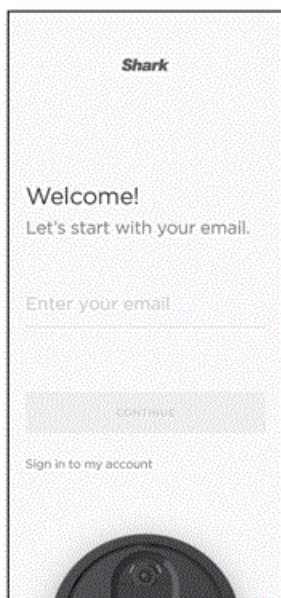
- Open the SharkClean app and set up your account.

STEP 2 Activate Robot Wi-Fi

Hold down Dock and Clean buttons simultaneously until your Shark prompts you with audio, and the Wi-Fi light () on the robot blinks

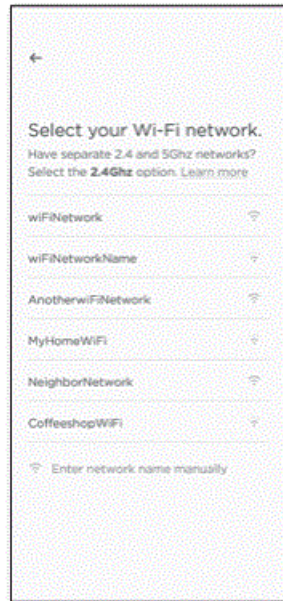
STEP 3 Select Robot (Apple iOS Only)

- Exit the app and open Wi-Fi settings.
- Select your robot (Ex. Shark_ RVXXX) from the menu.
- Exit settings and return to the SharkClean app.



STEP 4 Connect To Home Wi-Fi

- Select your home Wi-Fi network and enter your password.
- **NOTE:** Most networks are 2.4 GHz. The app will not work on 5 GHz network
- When pairing is complete, the Success screen will appear



Questions?

CAN'T CONNECT?

- Restart your phone
- Reboot your robot
- Make sure the power switch on the back of the BASE is in the ON position.
- Press the power button on the side of the ROBOT to the OFF position for 10 seconds, then press it again to turn the power back ON.
- Reboot your router
- Unplug the router power cable for 30 seconds, then plug it back in. Allow several minutes for your router to reboot completely.

Two Easy Steps If You're Stuck:

- Having trouble connecting to your robot? Call 1-888-228-5531 for robot support.
- For additional help, visit: sharkclean.com/support
- How-to Videos
- FAQs

Troubleshooting


Tips & Tricks Smart Home Setup

- To set up voice control using Google Home or Amazon Alexa, visit sharkclean.com/app for instructions.



- To stay current on our latest updates and features, DOWNLOAD THE SHARKCLEAN™ APP.
- Search “SharkClean” in the app store.
- Scan the QR code with your phone’s camera to quickly find and download the app

Documents / Resources

	Shark AV1010AE IQ Robot Vacuum Cleaner with XL Self-Empty Base [pdf] User Guide AV1010AE, AV1010AE IQ Robot Vacuum Cleaner with XL Self-Empty Base, IQ Robot Vacuum Cleaner with XL Self-Empty Base, AV1010AE IQ Robot Vacuum Cleaner, IQ Robot Vacuum Cleaner, Robot Vacuum Cleaner, Vacuum Cleaner
---	---

References

- [S Vacuum Cleaners, Steam Mops, Hair Care & Air Purifiers | Shark Home Cleaning](#)