



## ShareGrid v4 Keyhole Piano Shells User Manual

[Home](#) » [ShareGrid](#) » ShareGrid v4 Keyhole Piano Shells User Manual 

### Contents

- [1 ShareGrid v4 Keyhole Piano Shells](#)
- [2 Packaging Contents](#)
- [3 Assemble Instruction](#)
- [4 Documents / Resources](#)
  - [4.1 References](#)
- [5 Related Posts](#)

**ShareGrid v4 Keyhole Piano Shells**



## USER MANUAL

### Packaging Contents

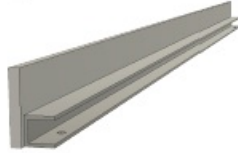
x1 - Main body section



x3 - Leg



x1 - Lip



x1 - Backboard



x1 - Top



x1 - Lid



x2 - Lip Knob

1/4"-20 x 3/4" long knob

x6 - Leg Hardware

3/8"-16 x 1,5" long wing screw



x2 - Carriage Anchor Knob

1/4"-20 x 2" long knob

x2 - Hinge Pin



## Assemble Instruction

- Begin with the main body of the piano upside down.
- If purchased, keep the soft case on at this point, Only unbuckle the straps.
- Attach the legs hardware by hand.



- Turn the piano right-side up.
- If purchased, keep the soft case on at this point.
- Once upright, If purchased, remove the case.
- Remove the carriage anchor knobs



- Turn the sleds outward into fully open position.



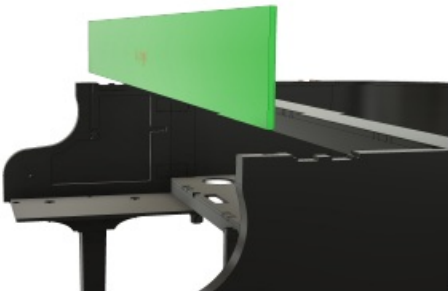
Loosely thread the sled hardware with the carriage anchor knobs, Do not fully tighten at this step.



- Attach pedal lyre (IF purchased)



- Slide the backboard down into the slot with the logo facing out.



- Place top in position. Top slides into frame hardware.



- Attach the front lip and use the lip hardware to anchor it in place.



**Fully tighten the carriage knobs from the earlier step.**

**This is the best time to install the keyboard and run wires,**

- If purchased, install the interior panel.



**Place lid in position and line up the hinges,**




**Install the remaining accessories, if purchased.**



**Assembly is complete!**

---

## Documents / Resources

	<p><a href="#">ShareGrid v4 Keyhole Piano Shells</a> [pdf] User Manual v4 Keyhole Piano Shells, Keyhole Piano Shells, Piano Shells, Shells</p>
------------------------------------------------------------------------------------	----------------------------------------------------------------------------------------------------------------------------------------------------

## References

- [User Manual](#)

[Manuals+](#), [Privacy Policy](#)

This website is an independent publication and is neither affiliated with nor endorsed by any of the trademark owners. The "Bluetooth®" word mark and logos are registered trademarks owned by Bluetooth SIG, Inc. The "Wi-Fi®" word mark and logos are registered trademarks owned by the Wi-Fi Alliance. Any use of these marks on this website does not imply any affiliation with or endorsement.