



SHANLING EM5 Network Audio Player DAC User Guide

[Home](#) » [SHANLING](#) » SHANLING EM5 Network Audio Player DAC User Guide 

Contents

- [1 SHANLING EM5 Network Audio Player DAC](#)
- [2 Safety Instructions](#)
- [3 Names of Parts](#)
- [4 Operating instructions](#)
- [5 Documents / Resources](#)
 - [5.1 References](#)
- [6 Related Posts](#)



SHANLING EM5 Network Audio Player DAC



Safety Instructions

1. Don't repair, disassemble or modify the device without permission.
2. For good ventilation, a minimum of 10cm clearance shall be maintained at the back and both sides and 20cm at the top of the device.
3. Avoid any exposure to liquids.
4. Do not cover any ventilation hole with newspaper, cloth, curtain, etc. otherwise it might damage the device.
5. Do not use any open flame near the device.
6. The device shall be connected to AC power output socket with grounding protection.
7. If power plug and appliance coupler are used as disconnecting device, the disconnecting device shall be easily operable.
8. Dispose of the battery in accordance with local laws.
9. Only applicable for safe use in the area with elevation under 2000m. See Fig. 1 for the sign.
10. Only applicable for safe use under non-tropical climate conditions. See Fig. 2 for the sign.



Fig. 1



Fig. 2

Safety Precautions

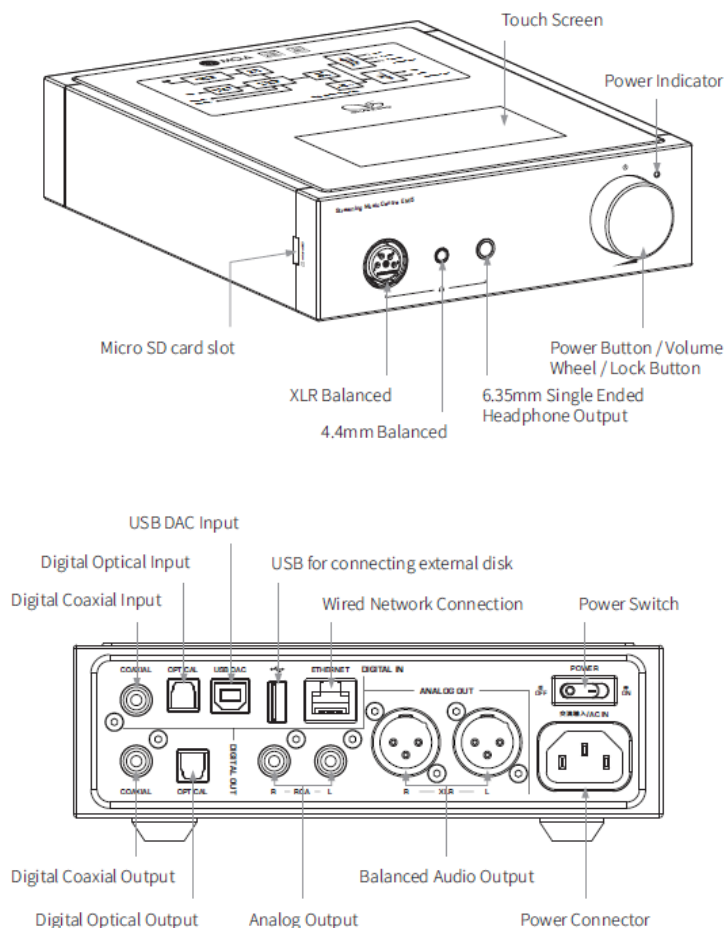
CAUTION
RISK OF ELECTRIC SHOCK
DO NOT OPEN

Caution: Risk of electric shock. DO NOT OPEN.

The sign with arrowed lightning inside an equilateral triangle warns the user that the player has high voltages inside which can cause electric shock.

The sign with an exclamation mark inside an equilateral triangle warns the user that the player has important operation and maintenance instructions.

Names of Parts



Operating instructions

Power ON / OFF / Screen Locking

1. **Power on:** Put the power switch to “ON” position. Then press the wheel for 2 seconds to turn on the device.
2. **Power off:** press and hold down the volume wheel for 2 seconds . The display shows the “Power Off” and “Restart” selection window. Click on “Power Off” to shut down the device.
3. **Screen lock:** while the device is powered on, short press the volume wheel to lock screen and turn off display. Press the volume wheel again to unlock device.

Note: If the device is not in use for longer period of time, please disconnect it from power outlet.

Gesture / Floating Ball Operation

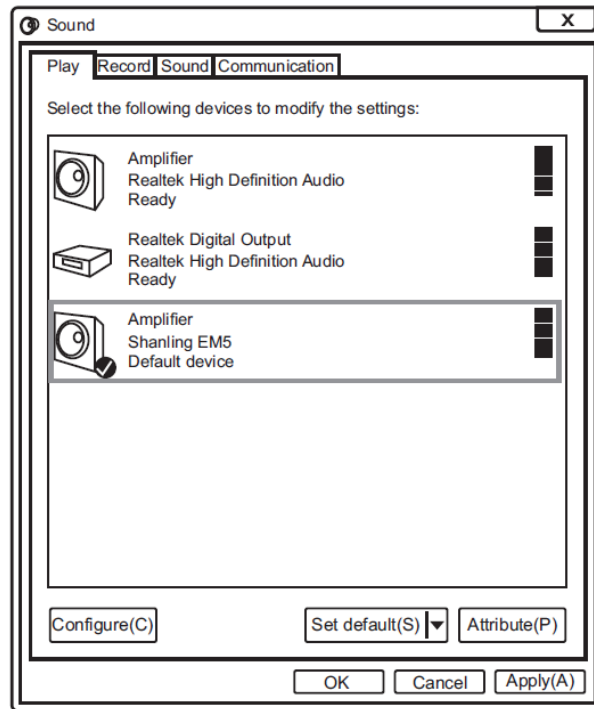
1. Gesture mode (Settings – System Settings – Display – Virtual Key Mode)
 - Return to the previous: slide to the right from the left edge of the screen or slide to the left from the right edge of the screen.
 - Back to the main screen: slide up from the bottom of the screen.
2. Floating ball mode (Setting – System Settings – Display – Virtual Key Mode)
 - Return to the previous: click the floating ball on the screen.
 - Back to the desktop: press and hold the floating ball on the screen.

Volume Control

Turn the wheel clockwise to increase the volume, turn the wheel counterclockwise to decrease the volume.

USB Settings

1. Connect the EM5 to your computer, connect cable to the USB DAC input.
2. Turn on the EM5, go to Input Switching and switch to USB_DAC.
3. If connecting to a Windows computer, additional USB drivers needs to be installed. No drivers are needed for other systems.
4. After connecting the player to a computer, open “Sound ” on your computer, right click on “Shanling EM5” and click “Set as Default Communication Device”.



Where to download the USB driver:

Visit the EM5 product page on <http://en.shanling.com> to download the USB driver.

Firmware Update

Do not do operate the player during the update process.

Over-the-Air Update

1. Turn on Wi-Fi and connect to local network.
2. Go to Settings – Firmware Update – Online Update.
3. Confirm installation and wait until process finishes.

Micro SD Card Update

1. Please download firmware update from Shanling’s official website. Copy the latest firmware file onto the Micro SD card.
2. Go to Setting Firmware Update – Local Update”, choose the path to firmware file and click update.

Companion APP

Eddict Player app allows access to additional settings and control over EM5. You can download it from Play store or Apple Store.

Attached Accessories

- Quick start guide: 1
- Warranty card: 1
- Power cable: 1
- USB cable: 1
- 3.5mm to 6.35mm Adapter: 1

MQA (Master Quality Authenticated)

EM5 includes MQA technology, which enables you to play back MQA audio files and streams, delivering the sound of the original master recording.


The EM5 Now Playing status glows green or blue dot next to MQA logo to indicate that the unit is decoding and playing an MQA stream or file, and denotes provenance to ensure that the sound is identical to that of the source material. It shows blue to indicate it is playing an MQA Studio file, which has either been approved in the studio by the artist/producer or has been verified by the copyright owner.

MQA and the Sound Wave Device are registered trade marks of MQA Limited © 2016

Group: 667914815; 303983891; 554058348
Telephone: 400-630-6778
E-mail: info@shanling.com
Website: www.shanling.com

Due to continuous improvement, every specification and design is subject to change at any time without further notice.

Documents / Resources

	<p>SHANLING EM5 Network Audio Player DAC [pdf] User Guide</p> <p>EM5 Network Audio Player DAC, EM5, Network Audio Player DAC, Network Audio Player, Audio Player, Player</p>
---	--

References

-  [Shenzhen Shanling Digital Techno](#)
-  _____
-  _____