



**SS Cool White
LED Courtesy
Light With Touch
Control**



shadow-caster SCM-CLS-RGBW-SS Cool White LED Courtesy Light With Touch Control Instruction Manual

[Home](#) » [shadow-caster](#) » shadow-caster SCM-CLS-RGBW-SS Cool White LED Courtesy Light With Touch Control Instruction Manual 

Contents

- [1 shadow-caster SCM-CLS-RGBW-SS Cool White LED Courtesy Light With Touch Control](#)
- [2 FAQ](#)
- [3 THEORY OF OPERATION](#)
- [4 OPERATION STAND-ALONE](#)
- [5 INSTALLATION](#)
- [6 SPECIFICATIONS](#)
- [7 CLEANING INSTRUCTIONS](#)
- [8 WIRING & USE SCHEMATIC](#)
- [9 MOUNTING INSTRUCTIONS](#)
- [10 MOUNTING TEMPLATE](#)
- [11 Documents / Resources](#)
 - [11.1 References](#)



shadow-caster SCM-CLS-RGBW-SS Cool White LED Courtesy Light With Touch Control



FAQ

Q: What power supply is compatible with the product?

A: The product is designed for nominal 12VDC applications.
Contact ShadowCaster.com for alternatives for 24Volt systems.

Q: How do I ensure a watertight seal during installation?

A: Apply silicone sealant into each screw hole and around the edge of the light to create a waterproof seal.

Q: Can I connect this product to a Light Commander Control System?

A: Yes, you can connect it to a Shadow-Net connected to a Light Commander Control System for advanced operation.

THEORY OF OPERATION

The Shadow-Caster SCM-CLS is a small courtesy light that has an integrated back lit touch switch. This feature makes it easy to locate the switch and no moving parts making this light IP67 and extremely reliable. When integrated with a Shadow-NET® control system, the light can seamlessly manage the entire connected lighting zone.

OPERATION STAND-ALONE

- When power is applied to the CLS Courtesy Light, the brightness slowly ramps up to full power over approximately 2 seconds.
- Toggle power to change the color (RGBW only).
- Touch button (backlit area) to turn the light on and off. Press and hold to adjust brightness.

OPERATION SHADOW-NET CONNECTED TO A LIGHT COMMANDER CONTROL SYSTEM

- Assign the CLS to a desired lighting zone through the Light Commander user interface.
- Use the backlit touch sensor for ON/OFF control of the CLS and any additional lights assigned to the same lighting zone as the CLS.
- Light Commander must be running V61 software or later for full functionality

INSTALLATION

- Drill mounting holes according to template provided
- Connect power and ground and optional Shadow-NET
- Put a 1/8" size ball of silicone sealant in screw holes before mounting
- Screw in light
- Snap stainless steel bezel over the light.

SPECIFICATIONS

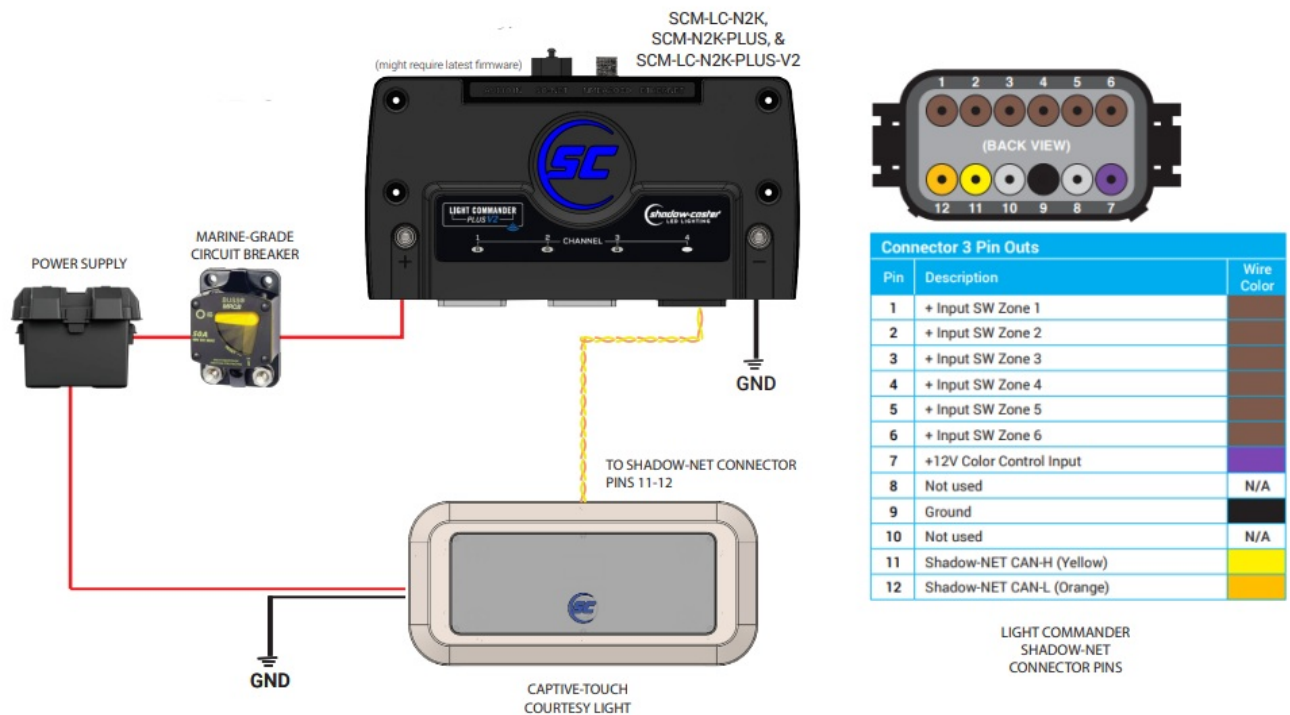
Only for nominal 12VDC applications. Contact Shadow-Caster.com for alternatives for 24Volt systems

- Up to 400 lumens of white light
- 12VDC, 300mA max current
- Stainless steel 316 polished cover
- IP67 waterproof design
- 4.25" x 2" x 0.3" [107.8 x 50.7 x 7.6mm]
- 160° diffuse output

CLEANING INSTRUCTIONS

- Clean with soap and water with a soft towel or sponge

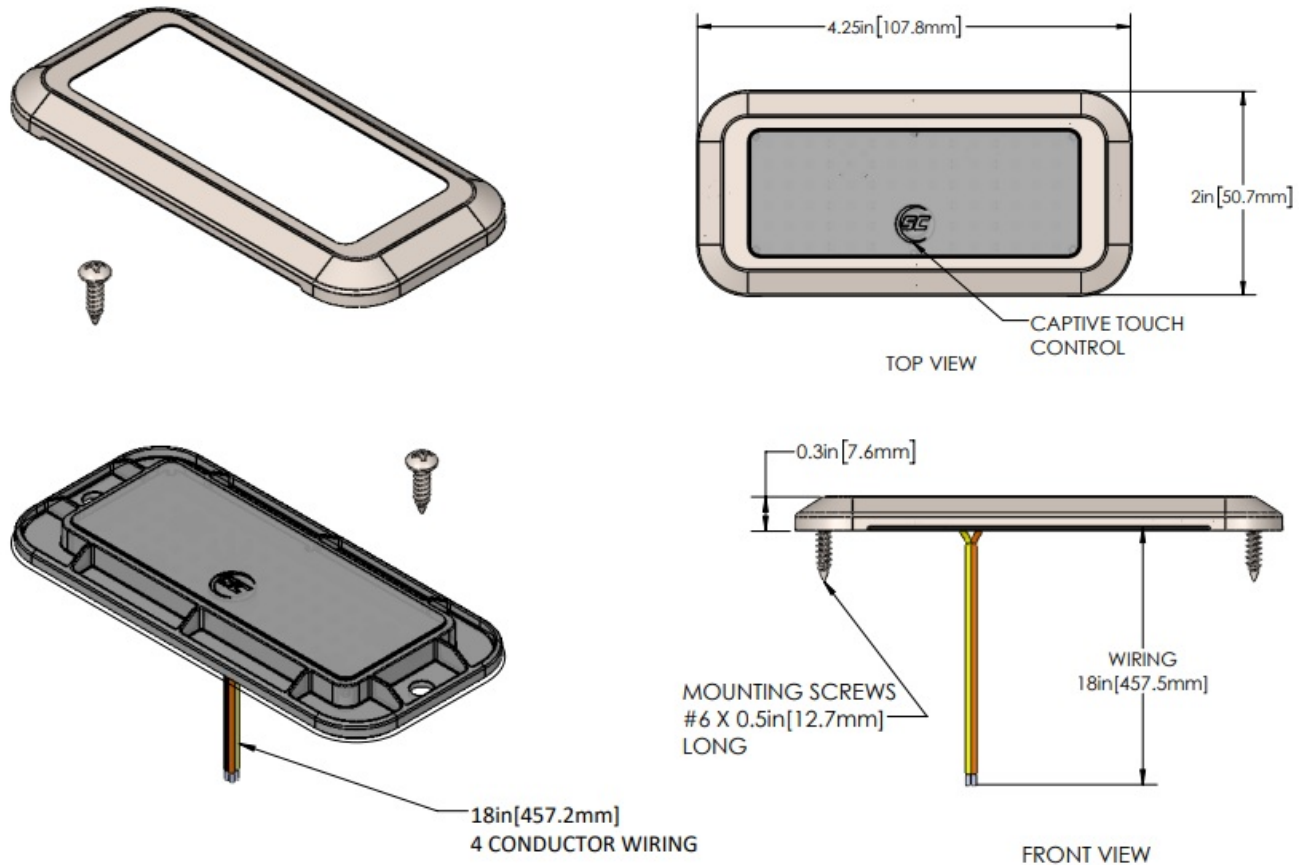
WIRING & USE SCHEMATIC



MOUNTING INSTRUCTIONS

1. Select a flat and easily accessible surface on your vessel where the CLS Courtesy Light can be securely mounted.
2. Clean the mounting surface to remove any debris or contaminants that could affect adhesion or sealing.
3. Print the provided template to mark the screw holes and the hole for the wiring.
4. Drill the necessary holes according to the template. Be sure to drill carefully to avoid damaging the surrounding area.
5. Apply a 1/8" size ball of silicone sealant into each screw hole to ensure a watertight seal.
6. Feed the wiring through the center hole.
7. Apply a thin bead of silicone sealant around the edge of the light to create an additional waterproof seal.
8. Position the CLS Courtesy Light over the drilled holes, ensuring it is aligned properly.
9. Insert the screws into the pre-drilled holes and tighten them securely to hold the light in place.

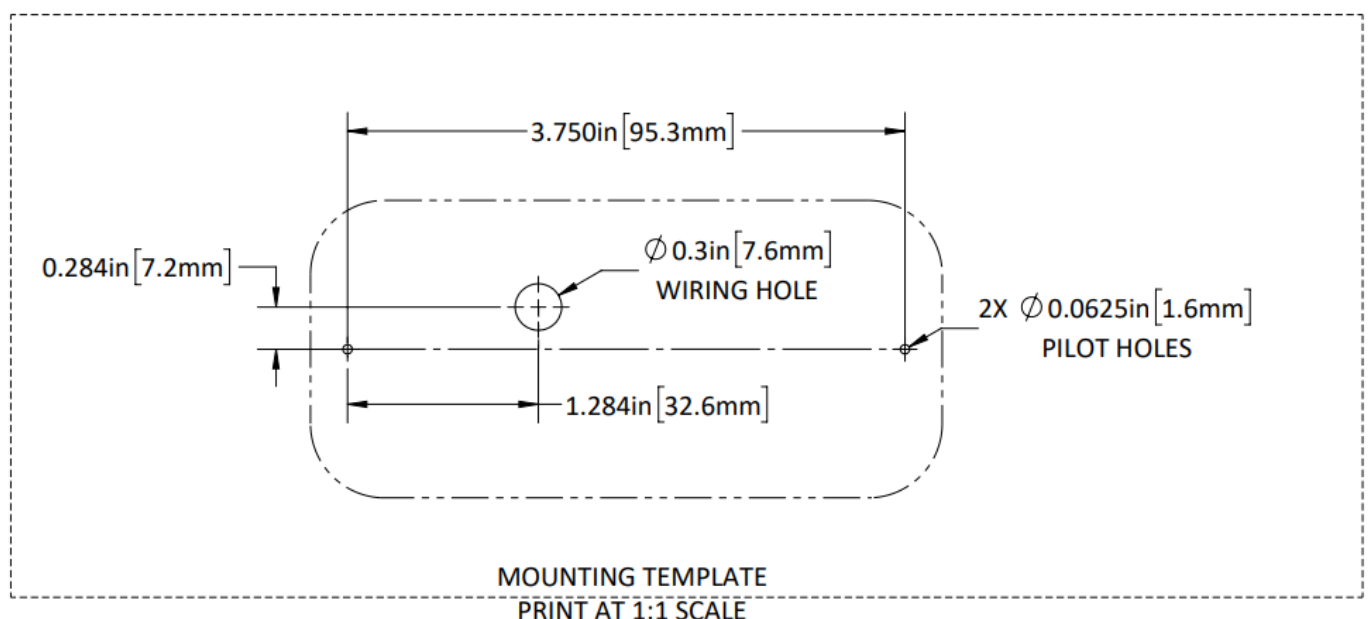
10. Check that the light is securely mounted and the sealant is evenly applied.
11. Wipe away any excess sealant for a clean finish.
12. Snap the stainless steel bezel over the light.



MOUNTING TEMPLATE

IMPORTANT!

When printing installation templates, please ensure your printer is set to print at 'Actual Size' and double check all printed dimensions exactly match the specified dimensions.





Designed & Manufactured in Clearwater, FL
© 2024 Shadow-Caster® LEDs. All Right Reserved.

Shadow-Caster® LED Lighting | 2060 Calumet Street | Clearwater, FL 33765
p: +1 727.474.2877
e: info@shadow-caster.com
w. shadow-caster.com

Documents / Resources

	<p>shadow-caster SCM-CLS-RGBW-SS Cool White LED Courtesy Light With Touch Control [pdf] Instruction Manual SCM-CLS-RGBW-SS, SCM-CLS-CW-SS, SCM-CLS-RGBW-SS Cool White LED Courtesy Light With Touch Control, SCM-CLS-RGBW-SS, Cool White LED Courtesy Light With Touch Control, Courtesy Light With Touch Control, Light With Touch Control, Touch Control, Control</p>
--	---

References

- [User Manual](#)

[Manuals+](#), [Privacy Policy](#)

This website is an independent publication and is neither affiliated with nor endorsed by any of the trademark owners. The "Bluetooth®" word mark and logos are registered trademarks owned by Bluetooth SIG, Inc. The "Wi-Fi®" word mark and logos are registered trademarks owned by the Wi-Fi Alliance. Any use of these marks on this website does not imply any affiliation with or endorsement.