



SFA Sanicompact Toilets with Built In Macerator Instruction Manual

[Home](#) » [SFA](#) » SFA Sanicompact Toilets with Built In Macerator Instruction Manual 



EMB5223

02/23

Sanicompact® 4C



Contents

- [1 Sanicompact Toilets with Built In Macerator](#)
- [2 IMPORTANT ADDITIONAL INFORMATION](#)
- [3 GENERAL DESCRIPTION](#)
- [4 LIST OF PARTS SUPPLIED](#)
- [5 DIMENSIONS](#)
- [6 PERFORMANCE CURVE AND TECHNICAL DATA](#)
- [7 INSTALLATION](#)
- [8 START-UP AND PROGRAMMING](#)
- [9 LIMITED WARRANTY](#)
- [10 Documents / Resources](#)
 - [10.1 References](#)

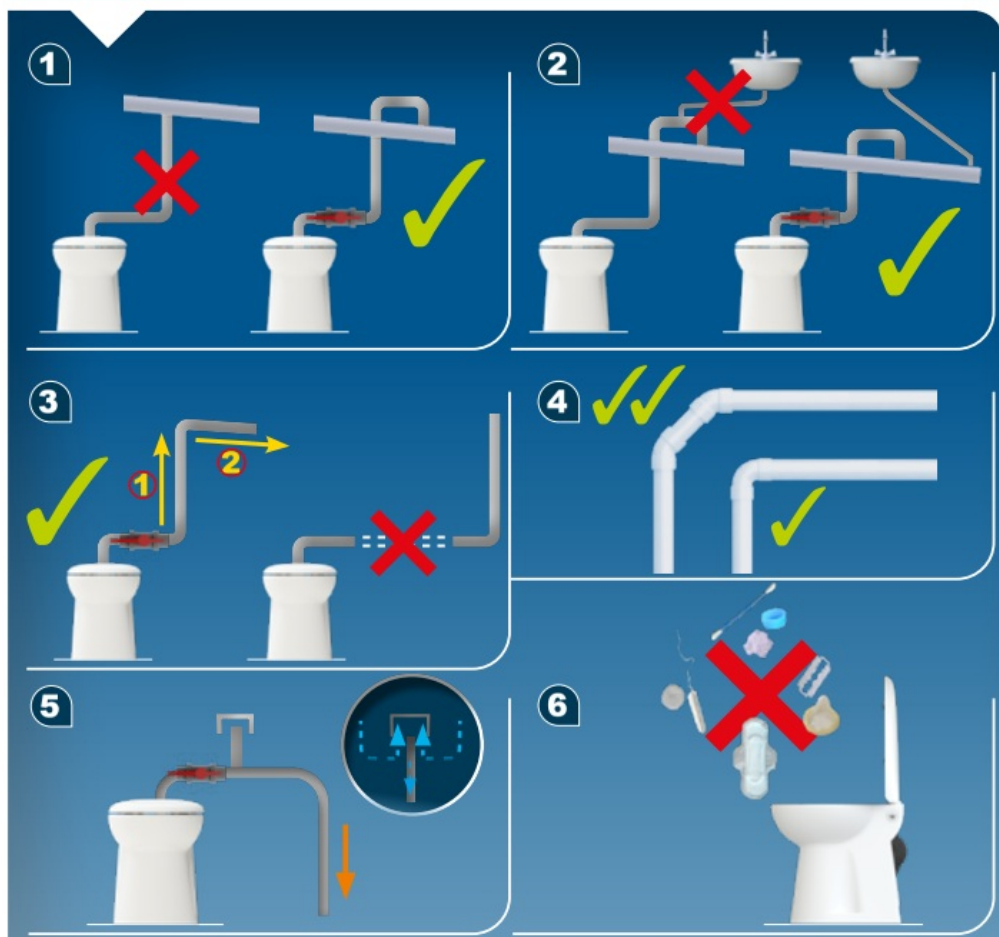
Sanicompact Toilets with Built In Macerator

IMPORTANT

DO NOT RETURN ANY MERCHANDISE TO THE VENDOR

For customer Service, Returns or Technical Questions, please call Saniflo's Technical support toll-free at 800-571-8191 (USA) or 800-363-5874 (CDN).

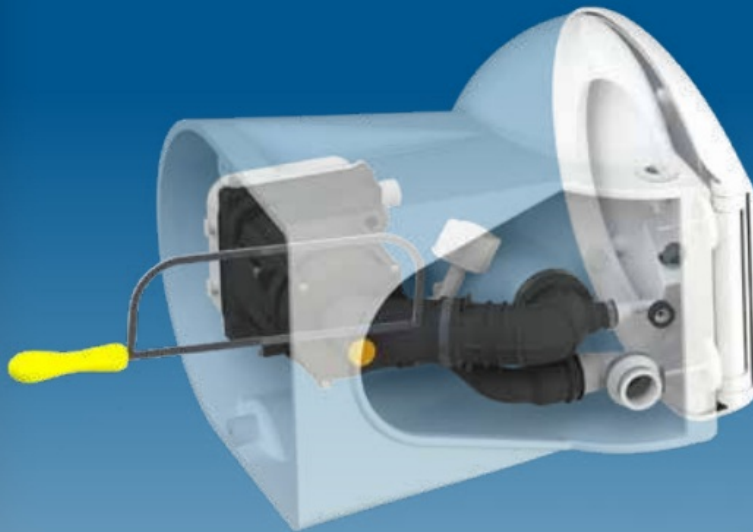
This product must be installed in strict accordance with local plumbing codes. Product should be installed by a licensed plumber.





3

TO CONNECT A SINK



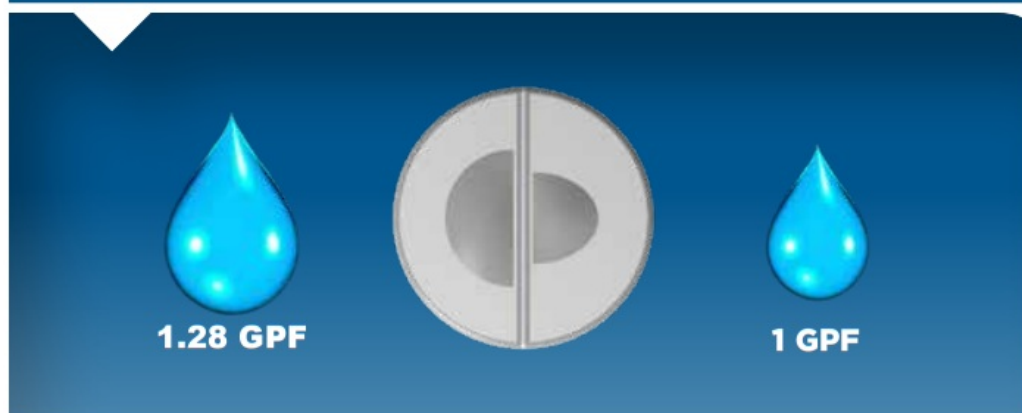
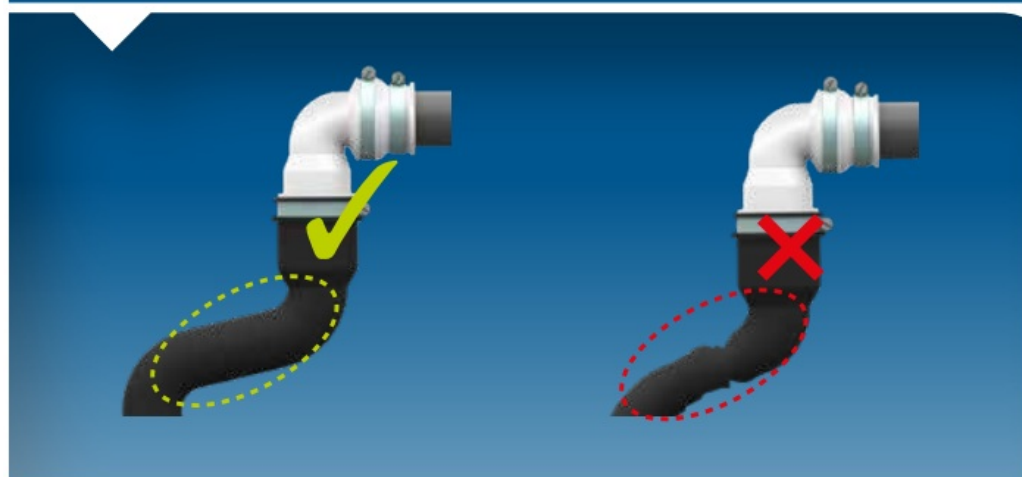
4

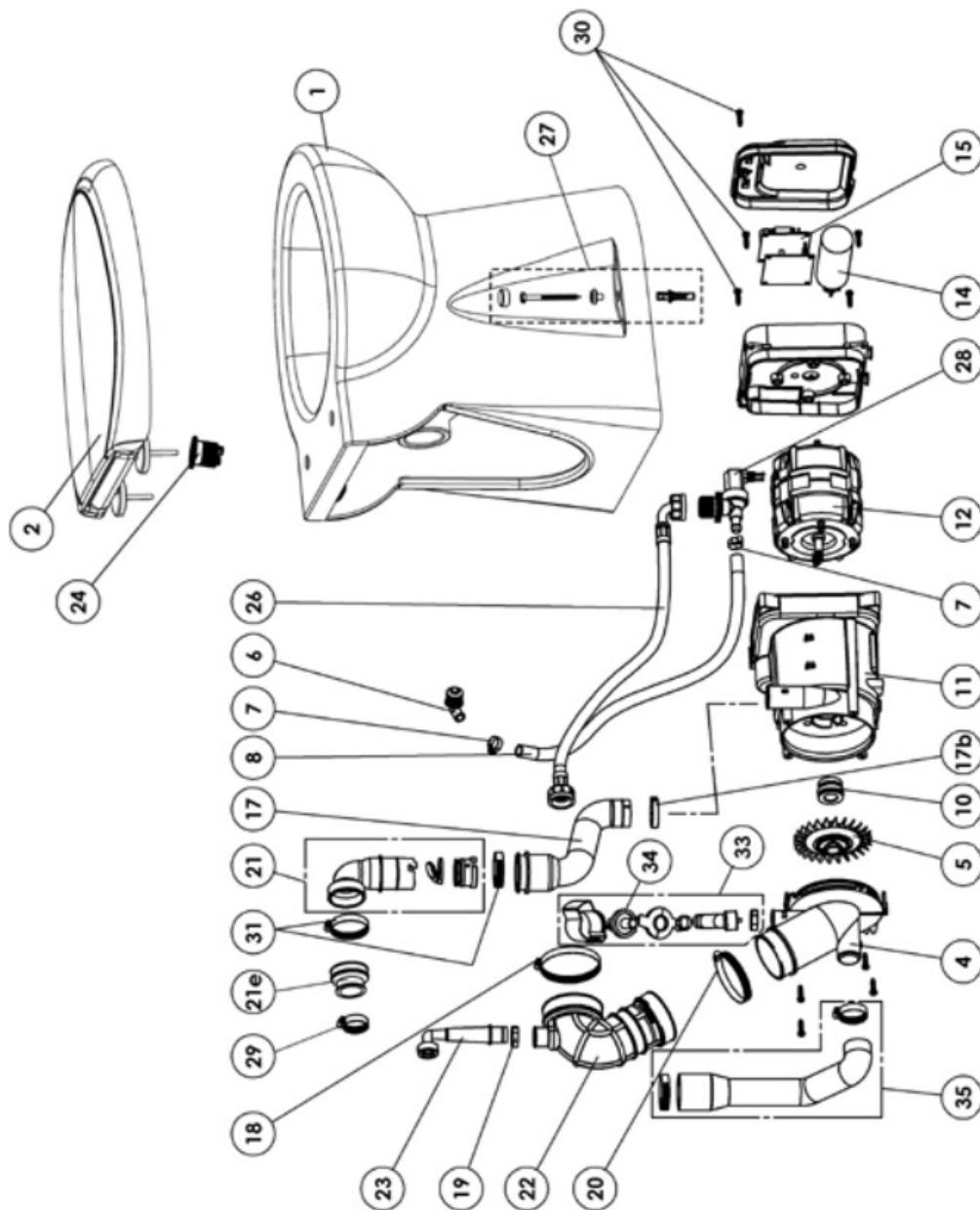


5

MOUNTING TO THE FLOOR







IMPORTANT ADDITIONAL INFORMATION

IMPORTANT

MANUFACTURING LABEL CAN BE FOUND STAMPED IN THE MOTOR CASE IN BACK OF THE TOILET. PLEASE GATHER INFORMATION TO REGISTER PRODUCT FOR WARRANTY PURPOSES BEFORE INSTALLING AND SECURING TOILET TO THE FLOOR.

GENERAL DESCRIPTION

The Sanicompact® 4C is a combination of a floor-mounted vitreous china toilet with a built-in macerating and pump system.

The Sanicompact® 4C is meant to be installed in residential applications and can be adapted to discharge gray water from a sink.

The Sanicompact® 4C is comprised of two major components: the china toilet body and the macerating/pump unit in the base of the toilet.

NORMAL OPERATING CYCLE

Sanicompact® 4C is controlled by an electronic program with two functions.

- It has a macerating and pumping function. To begin press on either side of the push button (light grey: small

flush, dark grey: large flush) integrated to the bowl.

- The pump cycle cleans the washbasin waste. This is an automatic operation that will activate as long as water from the washbasin enters the unit.

LIST OF PARTS SUPPLIED

See page 3.

DIMENSIONS

See page 15.

PERFORMANCE CURVE AND TECHNICAL DATA

See page 16.

APPLICATION	1 WC + sink
Maximum vertical pumping	9 feet
Voltage	110-115 V
Frequency	60 Hz
Normal power rating	815 W
Maximum current consumption	7.2 A
Maximum water temperature	l
Electric class	110° F
Degree of protection	IP44
Net weight	67 lbs
Horse power	0.5 HP

WARNING: Only installations conforming to the above specifications are acceptable.

INSTALLATION

V.1 ATTACHING THE TOILET TO THE FLOOR (see fig. 5)

1. After installing the water supply line and the drain hose, place the Sanicompact® 4C so that it is aligned with the piping.
2. Mark the fixing holes of the bowl on the floor.
3. Remove the device.
4. If the unit is installed on a concrete or stone floor, drill two 5/16 inch holes (8 mm) at a depth of about 2 inches (50 mm) and insert the dowels. In the case of installation on a wooden floor, drill a guide hole for # 10 wood screws.
5. Make the water connections.

6. Place the Sanicompact® 4C.
7. Fix the Sanicompact® 4C to the floor with the screws.

Do not over tighten the screws as the porcelain base may crack.

V. 2 CONNECTION OF THE DISCHARGE ELBOW (see fig. 2)

1. Fully insert the elbow A in the end of the rubber waste tube, after turning it to face in the desired direction.
2. Fix the base of the elbow A and tighten it on the rubber waste tube with a clamp B.
3. Connect the sleeve B to the end of the elbow with the clamp A.
4. Connect the 1" wastepipe into the sleeve and secure with clamp C.

WARNING: Ensure that you do not twist the discharge pipework inside the unit.

IMPORTANT: Protect pipes against freezing with appropriate insulation. If the toilet is installed in an unheated location during freezing periods protect it as follows:

- Shut off the water supply,
- Activate one cycle without water,
- Pour antifreeze in the bowl (2 liters).
- Flush the toilet.

IMPORTANT: Any bends in the discharge pipe run should be smooth radius bends. If using plastic pipe, if a sweeping 90 is not available, use two 45 degree turns to create a smooth bend.

When connecting the discharge pipe, it is recommended to install a ball valve for servicing purposes on the lowest point of the vertical discharge. The connection to the soil-stack should be made with an approved TY fitting and should be in accordance with your local plumbing code.

Note: The connection should always be done going into the top of the soil stack to prevent any back pressure into the discharge line from the unit.

V. 3 INSTALLATION OF A SINK (see fig. 3 and 4)

To drain a sink into the Sanicompact® 4C, the sink hose (provided) would have to be installed. Lay the Sanicompact® 4C on its side and cut the nipple which is situated on the motor cover that can be seen through the back of the unit. Connect the flexible sink hose and secure it to the motor cover using a clamp. A 1-1/4" drain pipe coming from the sink will connect to the other end of the sink hose which should also be secured by means of a clamp. Note that if the sink is installed on the left hand side of the bowl (while facing the front of the toilet), it will be required to have additional back room to create a loop into the sink hose connection. As the discharge line interferes with the sink hose connection, this will only be required when the sink is installed to the left of the bowl.

V. 4 WATER SUPPLY CONNECTION

For the best possible flushing action, the Sanicompact® 4C needs to be connected to a 1/2-inch water supply.

The Sanicompact® 4C is supplied with a supply hose. T

Note that the water supply hose provided comes with a 3/8" compression fitting for ease of installation.

Minimum water supply pressure must be 45 psi.

V. 5 ELECTRICAL CONNECTION

The Sanicompact® 4C should be connected to a 120 V, 60 Hz, 15 Amp.

Ground Fault Circuit Interrupter (GFCI), (either of the breaker or receptacle type). Connect only to receptacle protected by a ground fault circuit.

WARNING: risk of electric shock – this pump is supplied with a grounding conductor and rounding type attachment plug to reduce the risk of electrical shock be certain that it is connected only to a properly grounded – type receptacle.

Note: Do not connect the Sanicompact® 4C to a power source supplied by an inverter.

START-UP AND PROGRAMMING

VI.1 START-UP

1. Plug in the power socket.

Wait 20 seconds: appliance initializing. Open the water supply valve. Start the normal flush by pressing the dark grey button. Put a few sheets of toilet paper down in the bowl and flush again.

Note: This unit does not need to be vented.

2. Turn on the sink tap. The unit should activate automatically.
3. Demount the bowl and check the water tightness of all connections.

WARNING: Leaking faucets will cause the unit to activate automatically.

VI.2 PROGRAMMING

The length of your Sanicompact® 4C's flush varies according to which cycle you choose.

Eco flush (by default, light grey button):

19 seconds and 1 gallon (3.8 L): rinsing of the bowl for 10 seconds, the pump works for 7 seconds (for 7 seconds, the bowl continues to fill), then the bowl fills again for 2 seconds. You can lengthen the first rinse of the eco flush to 16 seconds if the default flush is not enough.

Normal flush (dark grey button):

25 seconds and 1.32 gallons (5 L): The bowl is rinsed for 16 seconds, the pump works for 7 seconds (for 7 seconds, the bowl continues to fill) then the bowl fills again for 2 seconds.

To re-program:

Note: Only the ECO option can be reprogrammed.

- Hold the ECO button (light grey button) down for 5 seconds.
- The motor works for 2 seconds, this means you have entered programming mode.
- Each time you press the dark grey button you increase the length of the ECO flush by 1 second: each time you press it will be validated by the motor running for a short period.
- Each time you press the grey button you decrease the length of the flush by 1 second: each time you press it will be validated by the motor running for a short period.

To exit programming mode:

- Wait for 5 seconds without pressing any buttons.

The motor runs for 2 seconds, this means that you have left programming mode.

Comment 1: the minimum length of the first rinsing flush for the normal flush is 19 seconds (default programming) and the maximum length is 25 seconds.

Comment 2: the normal flush cannot be modified.

VI.3 USAGE

4. The Sanicompact® 4C pump/macerator does not require any special maintenance.

5. **WARNING:** The Sanicompact® 4C should only be used for the evacuation of normal human waste, toilet paper and household toilet cleaners. Damage may occur to the motor if the following are disposed of via the toilet: cotton wool, tampons, sanitary napkins, wet wipes, kitchen towels, condoms, dental floss as well as other fabric or hard objects. Solvents, acids and other chemicals can also cause damage to the unit, and will invalidate the warranty.

WARNING: In case of prolonged power failure, or going on vacation, please close the stop valve of the the sink and water supply.

VI.4 RETURN OF THE UNIT

In the unfortunate event that the Sanicompact® 4C is defective and has to be returned for service, we suggest to remove the macerating/pump from the porcelain bowl. Please ensure that it has been thoroughly cleaned and disinfected inside and outside prior to packaging for dispatch. Do not submerge the motor completely in water; the electrical components might be damaged beyond repair.

VI.5 DISMANTLING AND REMOVING THE MOTOR FROM THE TOILET

For qualified personnel only

6. Disconnect the Sanicompact® 4C from the electrical supply.
7. Close the Shut-Off valve and disconnect toilet supply tube.

8. (If installed) Close Ball Valve and disconnect from discharge pipe system.
9. In the rear of the unit, look for a clear plastic hose going from the solenoid valve to a black elbow in the top of the bowl. With a twisting motion pull the black elbow out of the porcelain.
10. In the rear of the unit, look for a large rubber elbow, going from the motor to the p-trap of the toilet. Unscrew the gear clamp near the motor (holding the rubber elbow).
11. The motor is assembled in the reverse of the above.

IMPORTANT / SERVICE

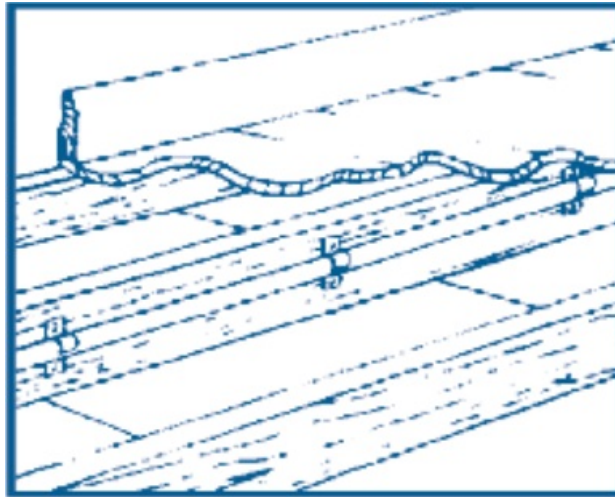
Before returning the motor to the factory, a return authorization is needed from the manufacturer since some repairs may be done in the field. Parts or motors send in for repair, must be send pre-paid. Units sent collect and/or sent without prior authorization, will be refused. Package the macerating/pump unit properly with adequate shock absorbent material around it. Send package prepaid to the manufacturer, making sure to insure against loss and/or transit damage, (the amount of \$ 250.00 will suffice).

If any repairs are done outside the warranty period, or when the user damages the macerating/pump unit, an estimate of repair cost will be communicated to the customer. All repairs (parts and labour) will be done on a pre-paid basis only.

VII ADVICE

PIPE SUPPORTS

All sanitary pipe work must be supported, in accordance with the pipe manufacturers recommendations, to avoid dipping, which may cause the build up of residual water and subsequent blockage.

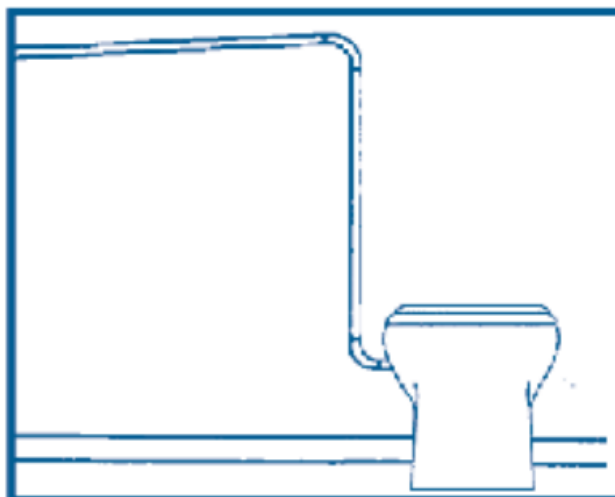


BENDS

Where possible long sweeping bends should be used rather than elbows. If this is not possible, It is recommended to use two 45° elbows rather than one 90° elbow.

VERTICAL INSTALLATION FIRST

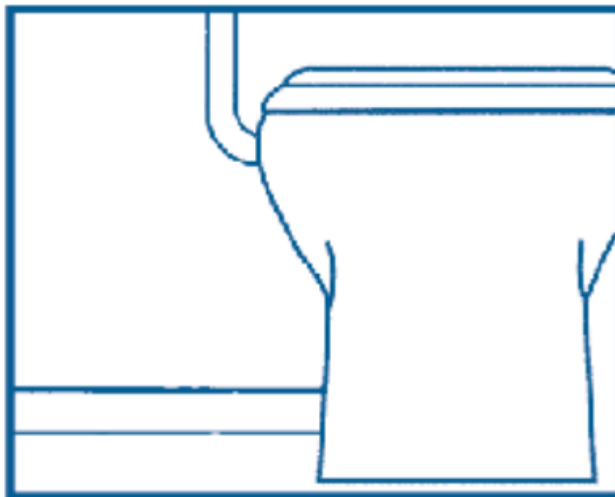
If vertical lift is required, this must precede the horizontal pipe run. The vertical discharge pipe should first bypass the bowl, do not extend the horizontal portion of the pipe for more than 12-18 inches.



EASY ACCESS

The unit should be accessible and removable in the event of maintenance being required. During the installation a full-port gate valve should be fitted at the base of any vertical discharge pipe work from the unit to allow easy

removal of the unit without flooding.

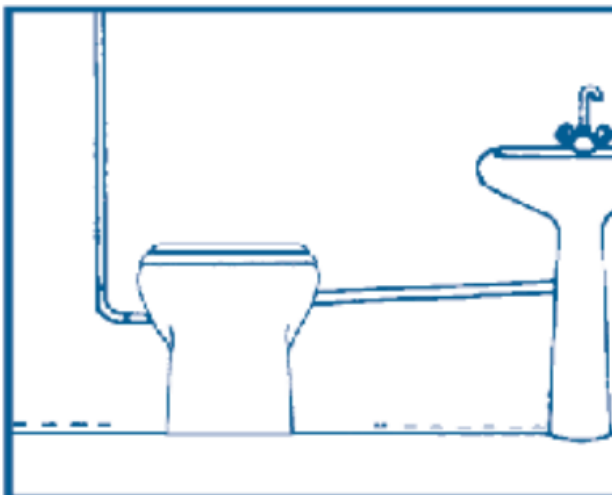


GRAVITY FALL

Horizontal discharge pipe work must also have a positive gravity fall to allow free drainage when the pump stops.

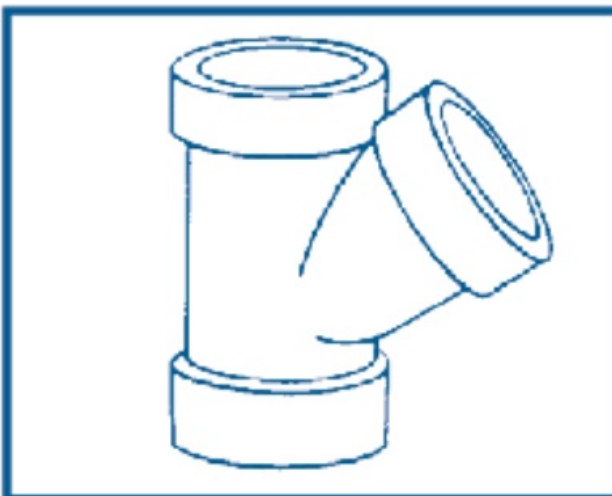
THREE FEET MINIMUM

The macerating/pump must have at least 3 feet of total pipe run in between the pump and soil stack. This will cause the macerator to operate for an adequate period of time to ensure waste reduction.



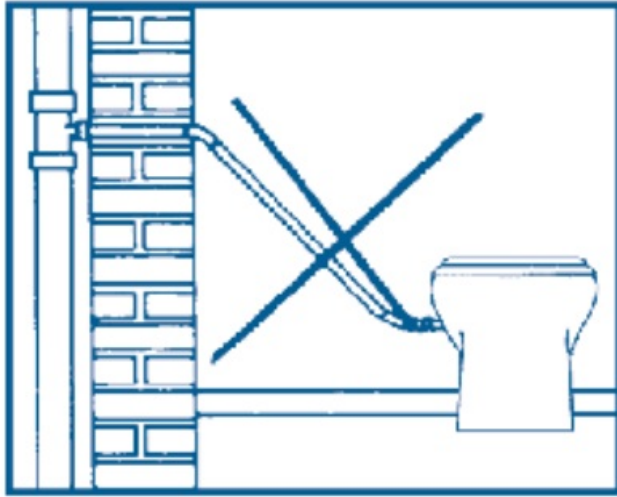
SOIL STACK CONNECTION

This unit must discharge into a minimum 3-inch sanitary drainage pipe. All discharge pipe work must be connected to the soil stack by an appropriate and approved TY connection. Please note: the use of a Saddle Clip may be prohibited in your area.



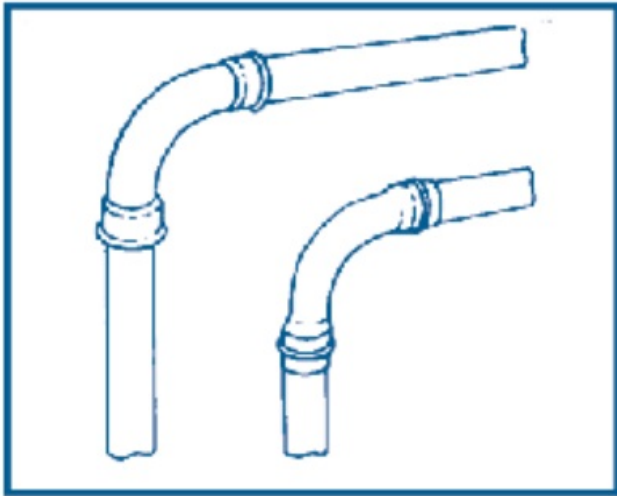
NO DIAGONAL "UPHILL" PIPE RUNS

All discharge pipe work from the unit should run either directly vertical upwards from it or in a horizontal plane (with a small gravity flow) to the point of discharge. Pipe work should not be installed with diagonal upward slope from the unit.



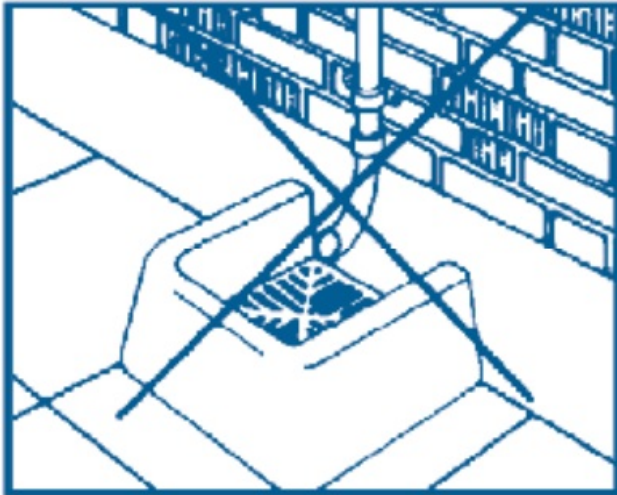
PIPE WORK

All pipe work should be either copper or solvent weld plastic (PVC, CPVC). Do not use flexible pipes.



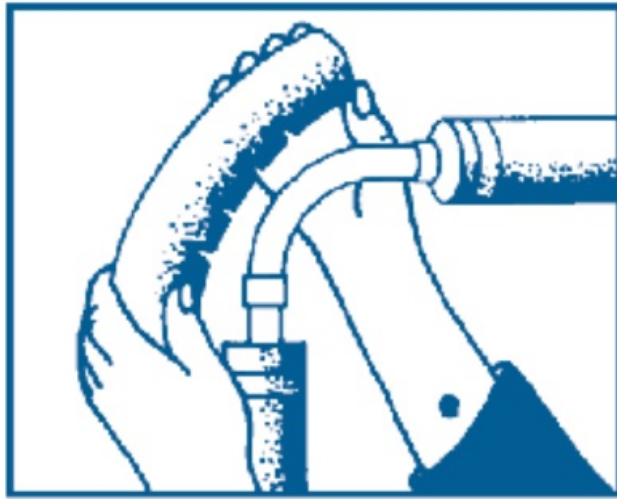
DISCHARGE

Never discharge directly into an open drain, manhole or rainwater drain pipe. It is illegal.



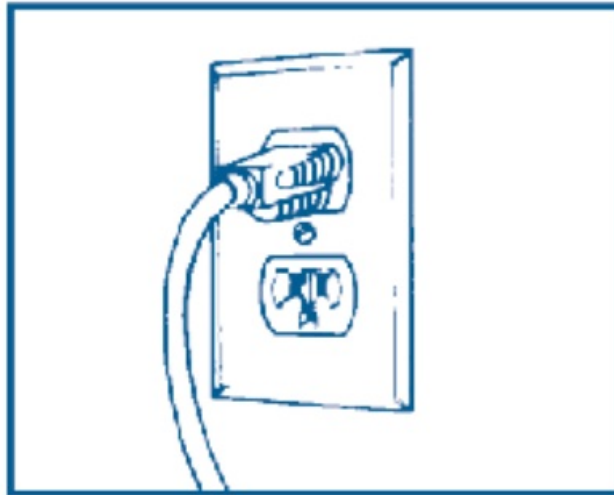
FREEZING

Ensure all pipe work susceptible freezing is adequately insulated. The toilet and macerating/pump unit must be properly winterized in unheated buildings.



ELECTRICITY

Before attempting any maintenance or servicing, the unit must be disconnected from the power source. The Sanicompact® 4C must be connected to a Ground Fault Circuit Interrupter and be supplied with 120V, 60Hz.



LIMITED WARRANTY

2 Year Warranty from Date of Purchase

A. GENERAL

Subject to the terms and conditions set out in this document, SFASANIFLO INC., hereafter designated as the Company, guarantees the consumer to repair or exchange any product or any of its components (at the discretion of SFA Saniflo Inc) which proves to be defective. NOTE:

- First (1st) year: will only cover “exchanges” starting from the date of purchase.
- Second (2nd) year: will only cover “repairs” or will provide “replacement parts” at no charge for the remainder of product’s warranty period.

B. TERMS AND CONDITIONS

1. The product must be installed and used as per instructions supplied and indicated in the product manuals. This is not limited to but includes the product:
 - not be subjected to any negligence, accident or exposure to “harmful” products or substances.
 - installed in strict accordance with local state or provincial electrical and plumbing codes.
2. The alleged defect or fault must be reported either to the product installer or the company within the warranty coverage period.

3. The warranty coverage period is valid for two (2) years from date of purchase.

C. PART OR PRODUCT EXCHANGE/REPLACEMENT

All requests require a Return Goods Authorization number (RGA#) or CAS# prior to any repair or exchange, otherwise the warranty claim or request may be denied.

D. LIMITATIONS

1. Fill & flush valves are covered as per the Original Equipment Manufacturers (OEM) warranty only.
2. Vitreous china is covered only for factory "defects" for a period of one (1) year from date of purchase.
3. The following are not covered under warranty and the costs (\$) are the responsibility of the enduser (customer):
 - Disconnection and reconnection of product (i.e. labor charges) by customer or plumber.
 - Cleaning & packaging of product. Customer responsibilities and requirements on for returning product(s), will be discussed, and explained by the SFA After Sales Rep (ASR) at time of phone call.
4. Subject to the Terms and Conditions above, in no event shall the company be liable for any special, incidental, or consequential damage, loss, or injury of whatsoever, nature or kind arising from or associated with the product or any component thereof.
 - Refer to section "F" for more details and information on warranty coverage exemptions.
5. This warranty is transferable only when the product remains at the same premises as where it was installed initially when purchased.

E. EXTENDED WARRANTY + 1

For the extended warranty, the following products terms and conditions must be met:

- Product must have been purchased on or after January 1st, 2016.
- The product must be registered "online" by filling out the registration form,
- A "Proof of Purchase" (POP) is required to be submitted.
 - a valid copy of the sales receipt will need to be uploaded to the SFA website.

F. EXTENDED WARRANTY + 2

For the extended warranty, the following products terms and conditions must be met:

- Product must have been purchased on or after January 1st, 2023.
- The product must be registered "online" by filling out the registration form,
- A "Proof of Purchase" (POP) is required to be submitted. – a valid copy of the sales receipt will need to be uploaded to the SFA website.

NOTE: The product registration for the warranty must be submitted within the first (1st) year from date of purchase.

G. WARRANTY COVERAGE EXEMPTIONS

Subject to the "exemptions" section indicated below, SFA Saniflo Inc. will provide all replacement parts as necessary free of charge, to remedy any such defects.

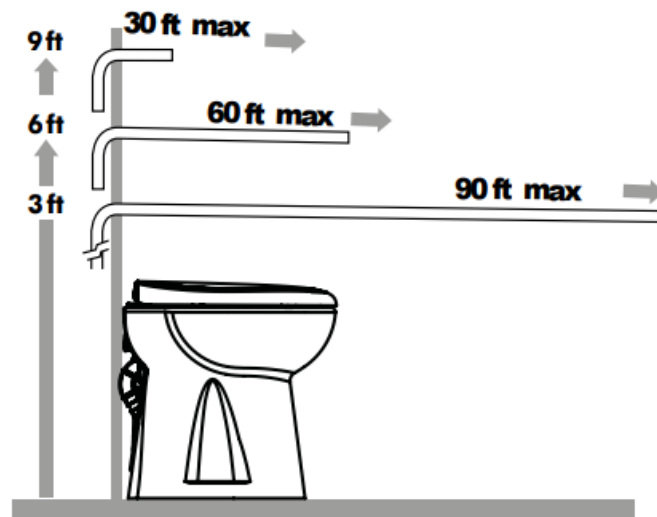
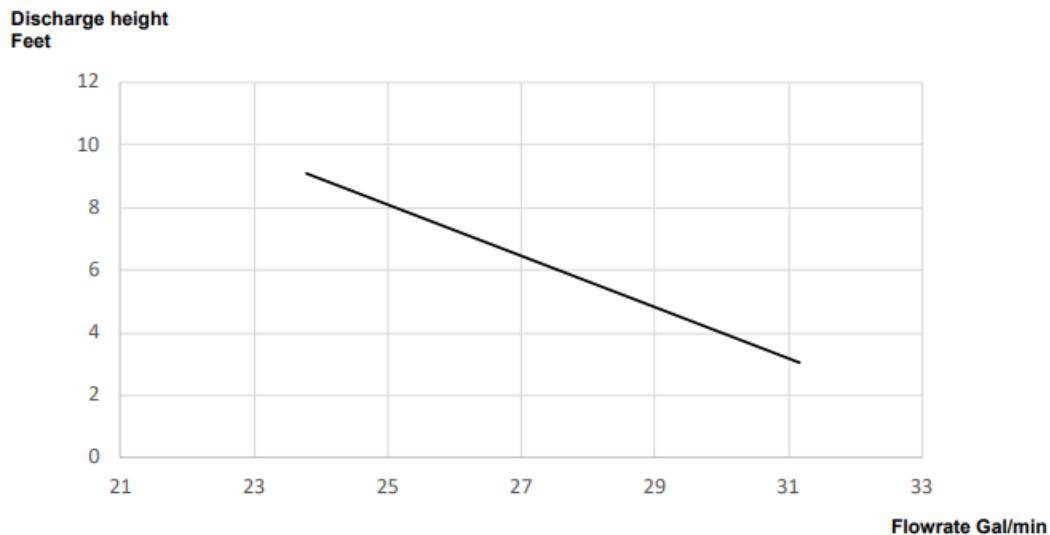
EXEMPTIONS: DISREGARDING ANY OF THE FOLLOWING MAY DAMAGE THE PRODUCT AND VOID YOUR WARRANTY.

- Do NOT discharge any acids, alkaloids, solvents painting, paint strippers, food waste, plastic bags, metal such as nails, hairpins, wood, building materials, kitty litter or anything that could halt or damage or corrode the unit.

- Do NOT hang bleach blocks or hydrochloride cleaners in the toilet tank.
- These solutions have been shown to deteriorate the plastic and neoprene components of the flush and fill valves and may cause leaks.
- In the event of a “power loss” do NOT use the toilet or any other sanitary fixture connected to the unit since it will not work until the power is restored.

H. WARRANTY DISCLAIMER

EXCEPT AS SET FORTH IN THIS LIMITED WARRANTY, THE COMPANY DISCLAIMS ALL OTHER WARRANTIES, EXPRESS OR IMPLIED, WITH RESPECT TO THE PRODUCT OR ANY COMPONENT THEREOF INCLUDING, BUT NOT LIMITED TO, ALL IMPLIED WARRANTIES FOR MERCHANTABILITY AND FITNESS FOR A PARTICULAR PURPOSE.



SANICOMPACT® 4C

120 V – 60 Hz – 7.2 A – 0.5 HP – 67lbs

For service or for further inquiries, please call or contact one of the following addresses:

 **SFA** GROUP
United States
SFA-SANIFLO INC.
105 Newfield Avenue, Suite
A Edison, NJ 08837

Toll Free: 1-800-571-8191
Phone: 1-732-305-2200
Fax: 1-732-225-6072
E-mail.: sfasales@saniflo.com
Website: www.saniflo.com


Canada

SFA-SANIFLO INC.

500 Jamieson Parkway, Unit 5
Cambridge, ON N3C 0G5
Toll Free : 1-800-363-5874
Phone: 519-824-1134
Fax: 519-824-1143

E-mail : sales@saniflo.ca or/ou ventes@saniflo.ca
Website: www.saniflo.ca or/ou www.saniflo.ca/fr

Documents / Resources

	<p>SFA Sanicompact Toilets with Built In Macerator [pdf] Instruction Manual Sanicompact Toilets with Built In Macerator, Sanicompact, Toilets with Built In Macerator, with B uilt In Macerator, Built In Macerator, Macerator</p>
--	--

References

- [SFA Saniflo](#)
- [SFA Saniflo](#)
- [SFA Saniflo](#)
- [User Manual](#)

[Manuals+](#), [Privacy Policy](#)

This website is an independent publication and is neither affiliated with nor endorsed by any of the trademark owners. The "Bluetooth®" word mark and logos are registered trademarks owned by Bluetooth SIG, Inc. The "Wi-Fi®" word mark and logos are registered trademarks owned by the Wi-Fi Alliance. Any use of these marks on this website does not imply any affiliation with or endorsement.