



SFA ACCESS1,2 Instruction Manual

[Home](#) » [SFA](#) » SFA ACCESS1,2 Instruction Manual 

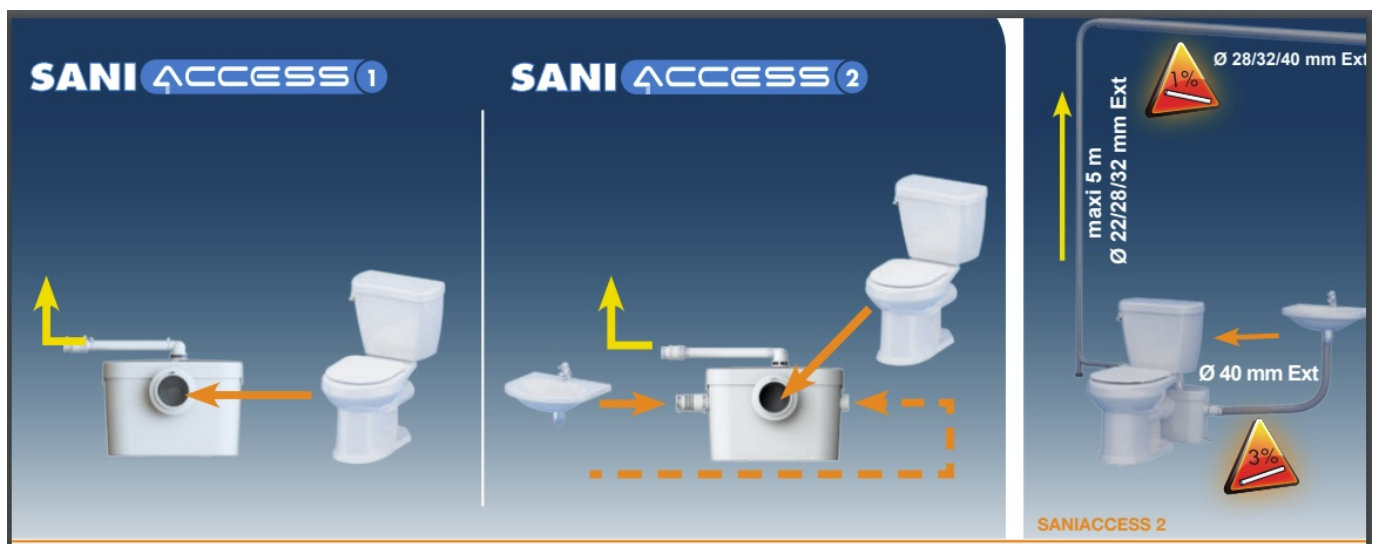
SFA ACCESS1,2

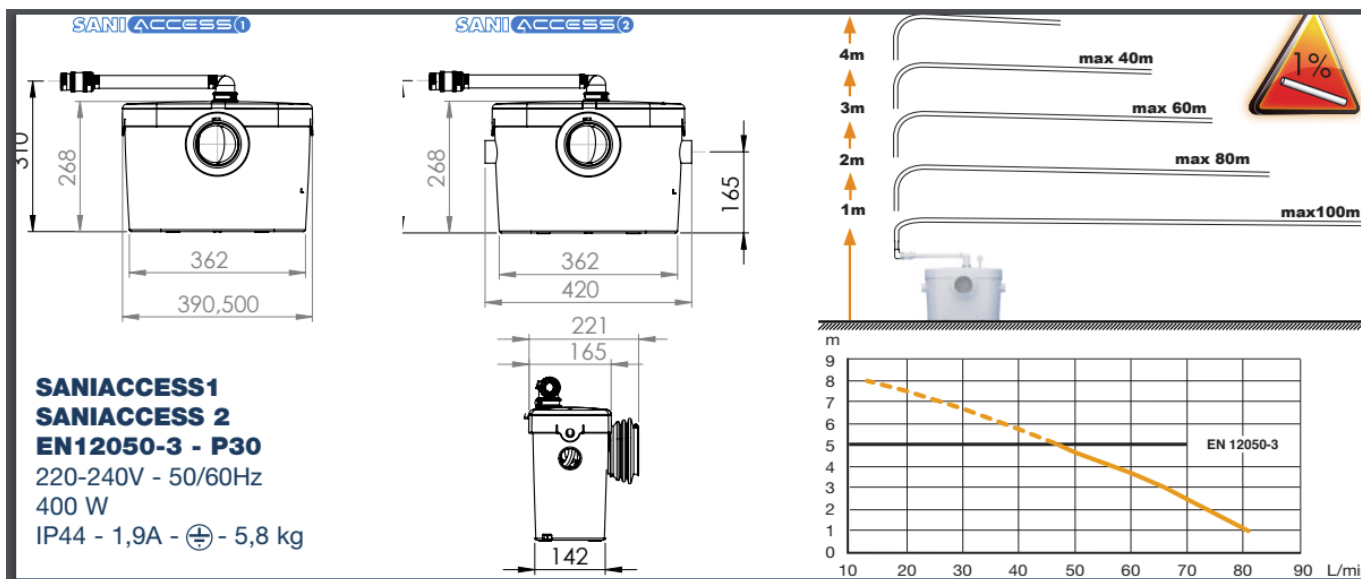
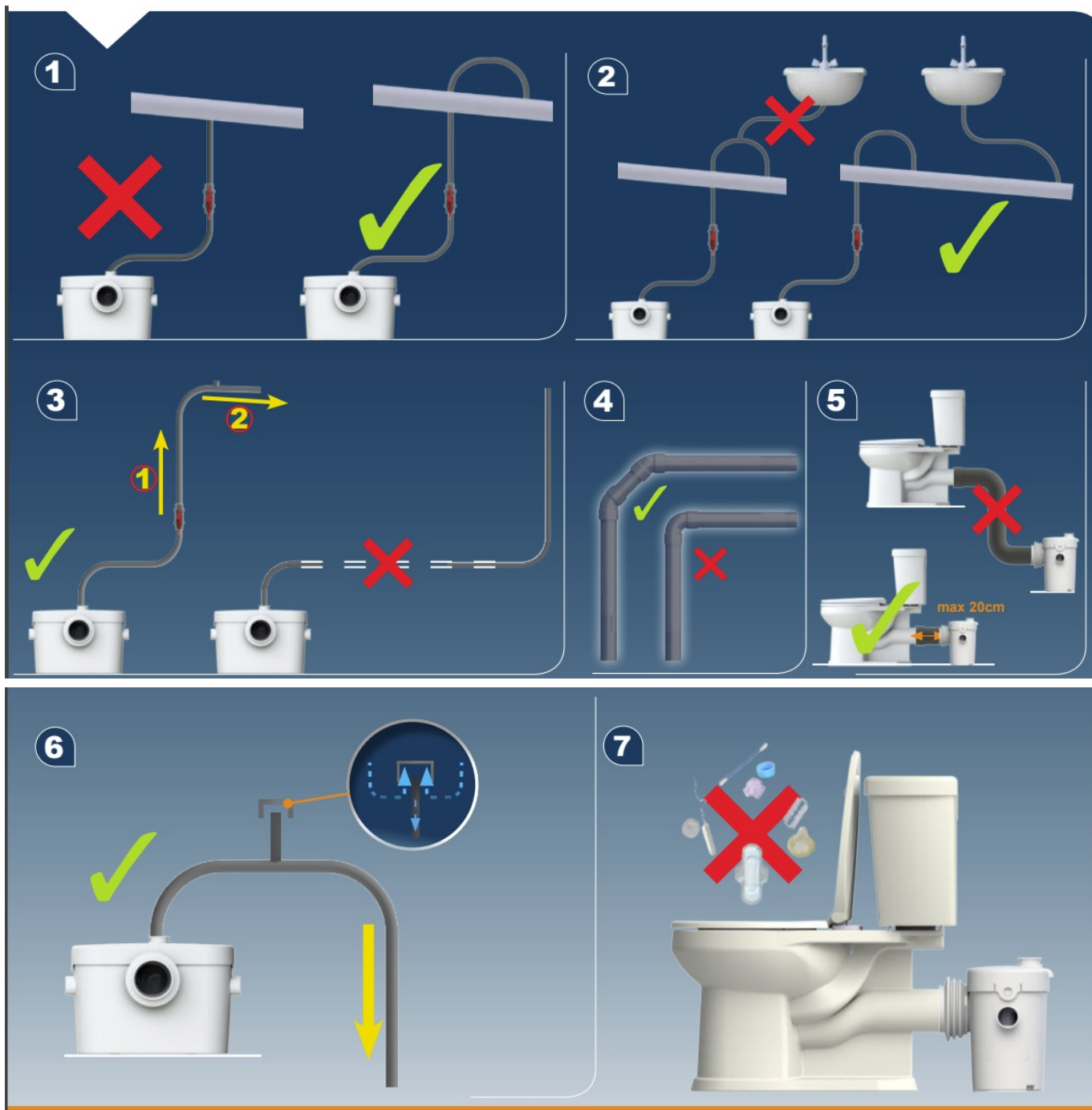


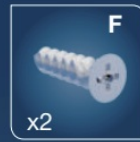
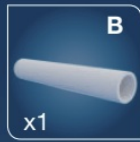
Contents

- 1 INSTALLATION INSTRUCTIONS
- 2 IMPORTANT ADDITIONAL INFORMATION
- 3 DESCRIPTION
- 4 APPLICATIONS
- 5 INSTALLATION
- 6 CONNECTION TO THE ELECTRICAL SUPPLY
- 7 COMMISSIONING THE UNIT
- 8 MAINTENANCE
- 9 FAULT FINDING / REMEDIES
- 10 GUARANTEE
- 11 Customer Support
- 12 Documents / Resources
 - 12.1 References
- 13 Related Posts

INSTALLATION INSTRUCTIONS







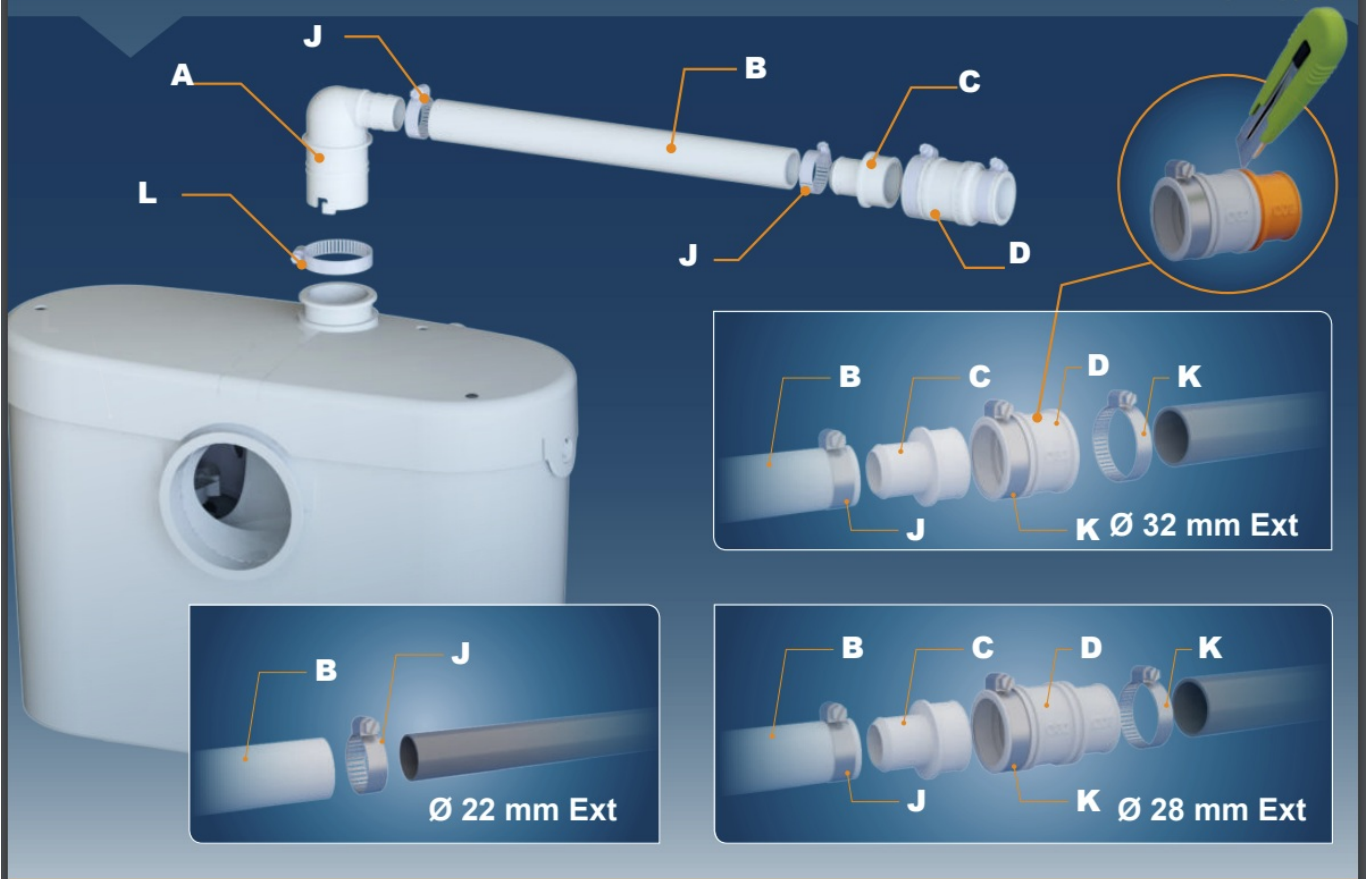
20x32

25x40

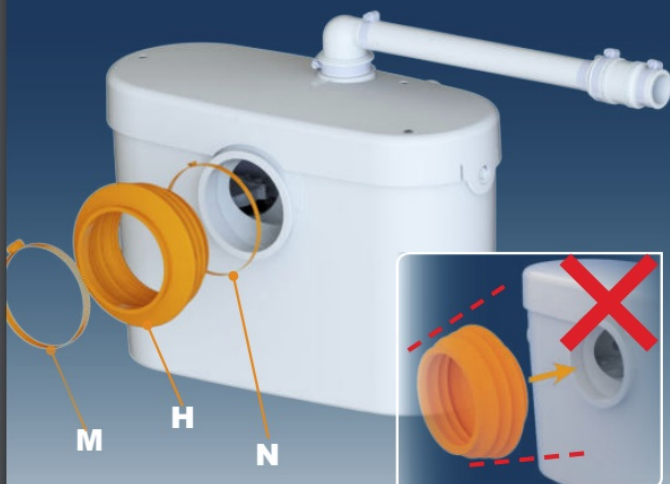
32x55

90x110

* SANIACCESS 2



1



2

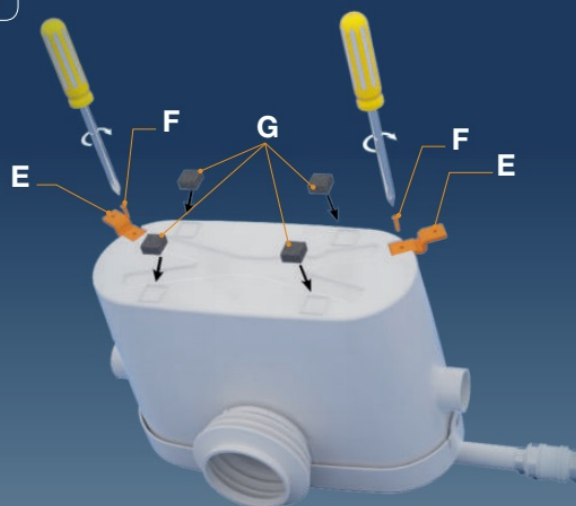
SANIACCESS 2



3

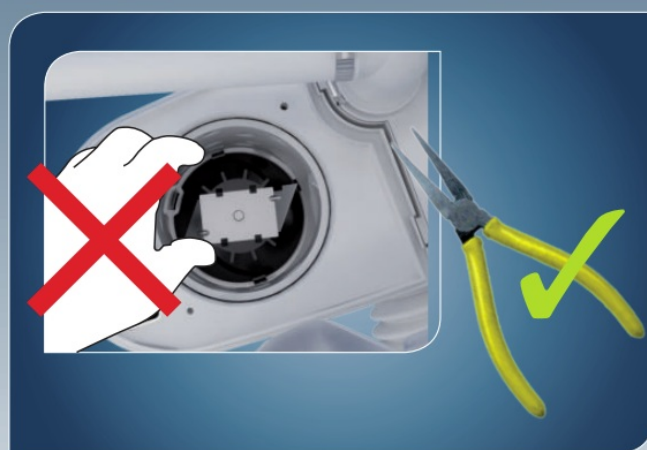


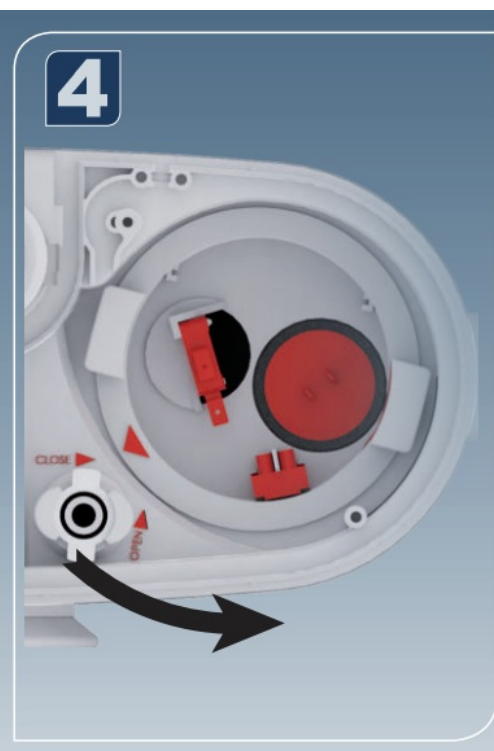
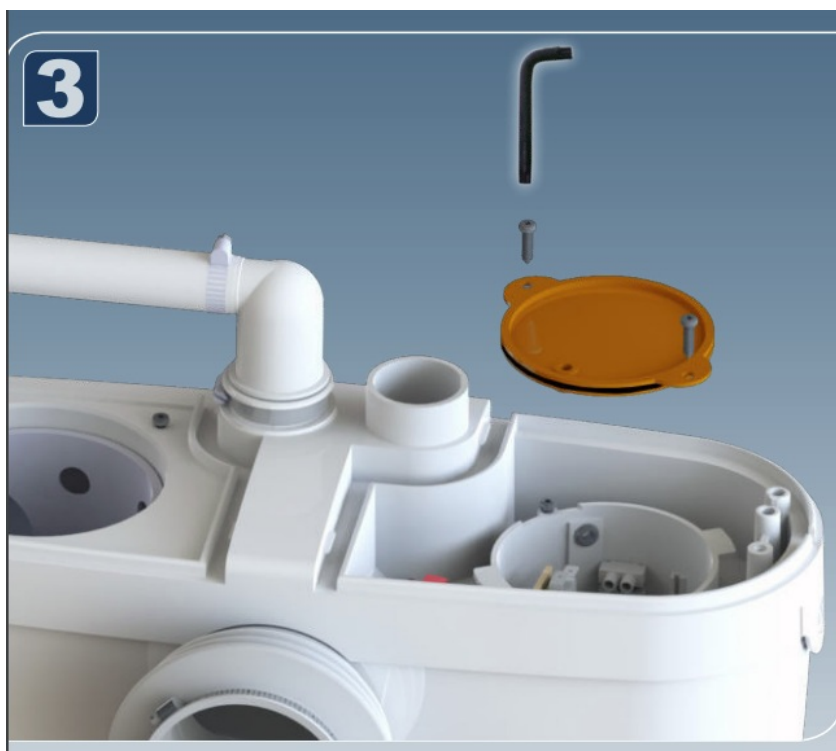
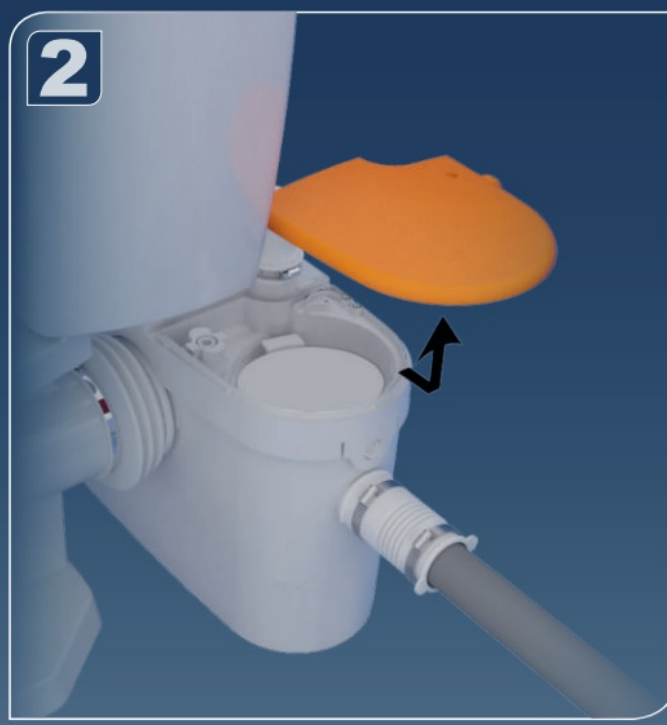
4



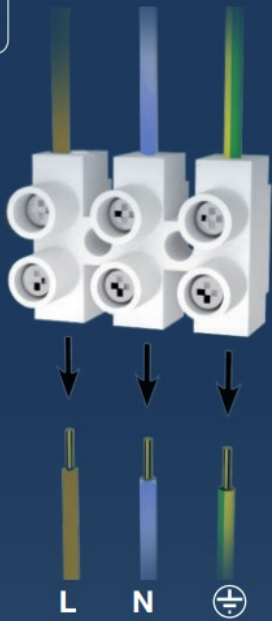
SANIACCESS 2







5



6

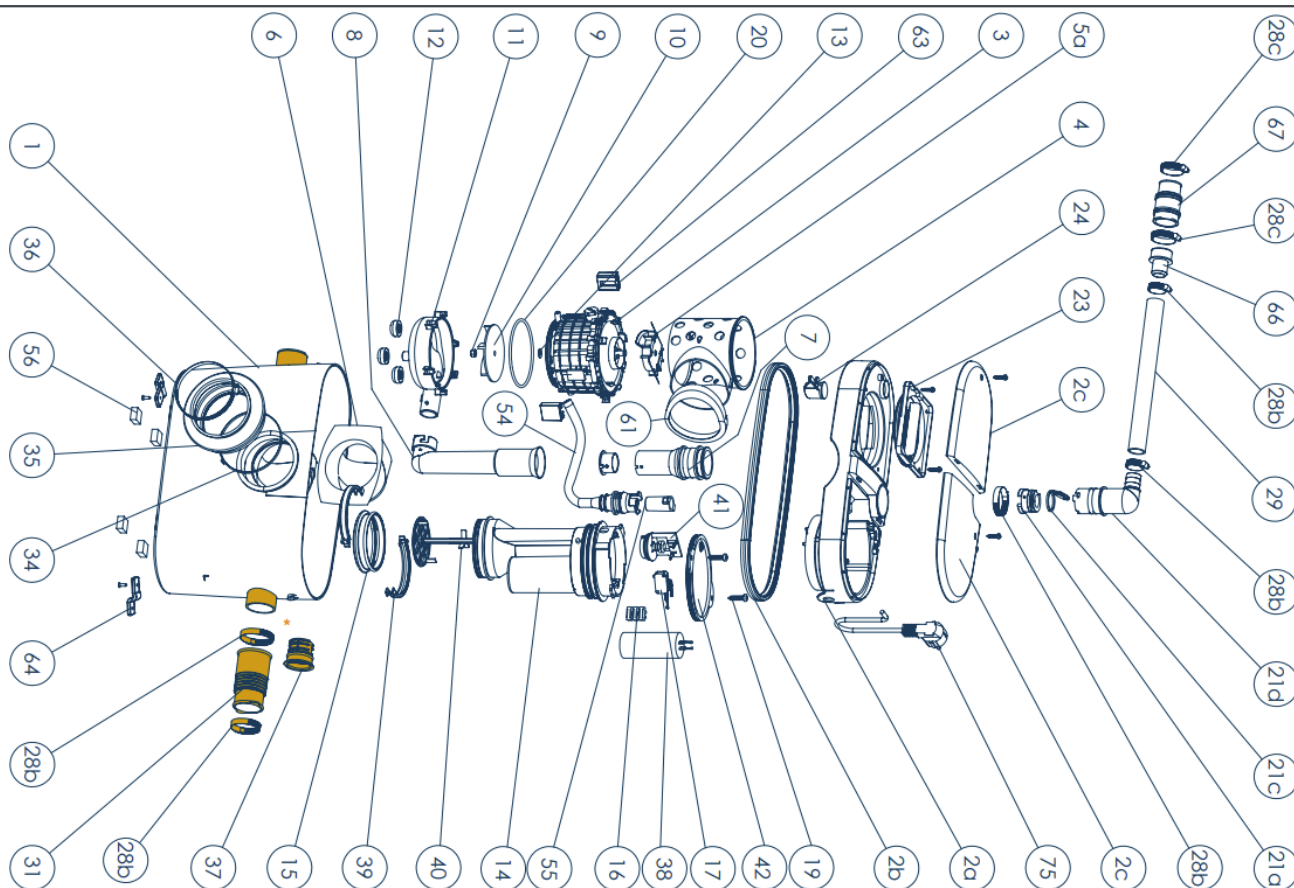


7



8





IMPORTANT ADDITIONAL INFORMATION

DESCRIPTION

This macerator is (manufactured in a factory which is quality) certified to ISO 9001. Installed and used correctly, the unit will give consistent and reliable service.

APPLICATIONS



This appliance is a compact lift pump unit designed for removing waste water from a horizontal outlet toilet*, shower*, bidet* or washbasin* (*: depending on the model). This appliance conforms to EN 12050-3 and the European standards concerning electrical safety and electromagnetic compatibility. To view the DoP (Declaration of performance) please click on the 'Illustrations and Datasheet' tab on each product page on our website.

INSTALLATION

The unit should be accessible for possible service. The fitting and working of your appliance must meet local regulations and the EN 12056-4 standard. To optimise the latest technical developments concerning soundproofing incorporated into this unit, it is important to:

- position the WC pan so that it is not in contact with a partition or wall of the room
- place the WC pan on a perfectly level surface to ensure that the resilient mounts are fully efficient

- fix the discharge pipe correctly, with distances of not more than one metre between the fastenings.

CONNECTION TO THE ELECTRICAL SUPPLY



The electrical installation should be carried out by a qualified person. The unit requires a 220/240V single phase AC 50 Hz supply (UK specification). The power supply circuit of the appliance must be earthed (Class I) and protected by a GFCI high sensitivity (30mA). **Warning: Ensure the electricity is turned OFF at the main switch board before wiring to connector.**

All wiring must conform to BS7671, 1992 requirements for electrical installations. Do not connect the unit to a conventional plug and socket. **It must be wired into a fused**, unswitched, fixed wiring connector fitted with a 5 amp fuse. The wires in the mains lead are coloured in accordance with the following code:

Brown – Live

Blue – Neutral

Green/Yellow – Earth

The connection must be used exclusively to power the device. All work on cable, pressure chamber and motor should only be carried out by a qualified Saniflo servicing agent, as special tools are required. Please do not cut/shorten the electrical supply cable which can make it very difficult to remove in the event of a service requirement.

COMMISSIONING THE UNIT

Flush the WC checking that all seals, and connections are watertight. Check both the discharge pipework from the unit and the other sanitary appliances connections. Check the watertightness of connections to sanitary appliances: toilet*, shower*, bidet* or washbasin* (*: depending on the model).

MAINTENANCE

WARNING !!! In the event of prolonged absence it is essential to turn off the water supply to protect the installation against sub zero temperatures.

CARE OF YOUR UNIT

In order to remove scale and clean the macerator and the bowl, use the SANIFLO Cleanser/Descalent.

- Disconnect the macerator power supply,
- Pour an amount of cleanser into the pan
- Leave it to stand for 1 or 2 hours,
- Re-connect the macerator power supply,
- Rinse by operating the flushing system twice.

Carry out the operation once every 3 months on average, but the frequency may need to be changed depending on the hardness of the water.

FAULT FINDING / REMEDIES



IN ALL CASES, YOU MUST DISCONNECT THE MACERATOR FROM THE POWER SUPPLY

SYMPTOMS	PROBABLE CAUSES	REMEDIES
<ul style="list-style-type: none"> The motor does not activate 	<ul style="list-style-type: none"> <i>The electrical power supply is not active</i> <i>The electrical power supply is defective</i> <i>The motor or the control system is defective</i> 	<ul style="list-style-type: none"> Restore the electrical supply Check the electrical power supply Otherwise, ask an approved repair agent to intervene
<ul style="list-style-type: none"> The motor emits a rattling or crunching sound, hums, but does not run 	<ul style="list-style-type: none"> Foreign object into the box <i>Problem with the motor or the control system</i> 	<ul style="list-style-type: none"> Remove the foreign body Otherwise, ask an approved repair agent to intervene
<ul style="list-style-type: none"> The motor intermittently activates 	<ul style="list-style-type: none"> <i>The connected sanitary devices are dripping water</i> <i>The non-return valve is faulty</i> 	<ul style="list-style-type: none"> Check the installation upstream Clean or replace the non-return valve
<ul style="list-style-type: none"> The motor operates normally, but continues to run for a long time 	<ul style="list-style-type: none"> <i>The length or height of the installation is over the specification, or there are too many bends/elbows</i> <i>The pump cover plate is partially obscured/blocked</i> 	<ul style="list-style-type: none"> Check the installation Otherwise, ask an approved repair agent to intervene
<ul style="list-style-type: none"> The unit stops 	<ul style="list-style-type: none"> <i>The unit has been running for too long (thermal cut-out)</i> 	<ul style="list-style-type: none"> Wait for reset, then ask an approved repair agent to intervene
<ul style="list-style-type: none"> Motor is surging and water in the WC pan goes down very slowly 	<ul style="list-style-type: none"> <i>The air dispenser is clogged up</i> <i>Problem with motor</i> 	<ul style="list-style-type: none"> Clear the air relief hole Otherwise, ask an approved repair agent to intervene
<ul style="list-style-type: none"> Cloudy water comes up into the shower basin (units with side inlets) 	<ul style="list-style-type: none"> <i>Shower installed too low as compared with the macerator unit</i> <i>Hinged side inlet discs clogged up</i> 	<ul style="list-style-type: none"> Check the installation Clean the hinged discs Otherwise, ask an approved repair agent to intervene

GUARANTEE

2 years guarantee as from its date of purchase subject to correct installation and correct use.



Only the disposal of toilet paper, faecal matter, and waste water will be under guarantee. Any damage due to foreign bodies such as cotton, condoms, sanitary towels, wet wipes, food, hair, metal, wood or plastic objects, will not be under guarantee. Solvents, acids and other chemicals can also cause damage to the unit, and will invalidate the guarantee.

Customer Support

SANIFLO Ltd.,
Howard House, The Runway
South Ruislip Middx.,
HA4 6SE
Tel. +44 208 842 0033
Fax +44 208 842 1671

SERVICE HELPLINES

TEL 08457 650011 (Call from a land line)
FAX 020 8842 1671






Documents / Resources



[SFA ACCESS1,2](#) [pdf] Instruction Manual
ACCESS1 2, ACCESS1, ACCESS2

References

-  [SFA ACCESS1,2](#)
-  [Saniflo Africa](#)
-  [Welcome on SFA BIZ](#)

-  [SFA | Fabricant français de pompes à eau et broyeurs wc](#)

[Manuals+](#), [home](#) [privacy](#)