



SETMSPACE STPW Series M2 SSD Drive Enclosure User Manual

[Home](#) » [SETMSPACE](#) » SETMSPACE STPW Series M2 SSD Drive Enclosure User Manual 

SETMSPACE STPW Series M2 SSD Drive Enclosure



Contents

- 1 Thank You
- 2 Package Contents
- 3 Product Specifications
- 4 How to Use
- 5 Connecting Computer
- 6 Uninstalling the hard disk
- 7 Formatting and partitioning the hard disk (Windows system)
- 8 Formatting and partitioning the hard disk (for MacOS)
- 9 Warranty Description
- 10 Copyright Statement
- 11 Customer Support
- 12 Documents / Resources
 - 12.1 References
- 13 Related Posts

Thank You

Thank you for choosing SETMSPACE products!

Please read this user manual carefully before using. Also available from www.setMspace.com download the detailed e-brochure and keep it for later use.

Package Contents

- 1× M.2 SSD Drive Enclosure
- 1× Silicone Screw
- 1× Thermal Pad
- 1× Data Cable

- 1× Thermal Fin (STPWM2: Not contain)
- 1× User Manual

Product Specifications

Model	STPWM2
Name	M.2 SATA SSD Enclosure
Input Port	B-Key/B&M-Key(SATA Protocol)
Products Wiring	USB-C TO USB-A, Wire Length 0.3M
Transfer Rate	5Gbps

Model	STPWM2-G2
Name	MEn.2cINoVsuMre Single Protocol Hard Drive
Input Port	M-Key/B&M-Key (NVMe Protocol)
Products Wiring	USB-C TO USB-C, Wire Length 0.3M
Transfer Rate	10Gbps

Model	STPWM2-G2A
Name	MEn.2cINoVsuMre Single Protocol Hard Drive
Input Port	M-Key/B&M-Key (NVMe Protocol)
Products Wiring	USB-C TO USB-A, Wire Length 0.3M
Transfer Rate	10Gbps

Model	STPWDM2-G2
Name	M.2 NVMe/SATA Dual Protocol Hard Drive Enclosure
Input Port	M-Key/B&M-Key (NVMe/SATA Protocol)
Products Wiring	USB-C TO USB-C, Wire Length 0.3M
Transfer Rate	10Gbps

Model	STPWDM2-G2A
Name	M.2 NVMe/SATA Dual Protocol Hard Drive Enclosure
Input Port	M-Key/B&M-Key (NVMe/SATA Protocol)
Products Wiring	USB-C TO USB-A, Wire Length 0.3M
Transfer Rate	10Gbps

Model	STPWEM2-G2
Name	M.2 NVMe/SATA Dual Protocol Hard Drive Enclosure + 2-in-1 Data Line
Input Port	M-Key/B&M-Key (NVMe/SATA Protocol)
Products Wiring	USB-C TO USB-C/USB-A, Wire Length 0.3M
Transfer Rate	10Gbps

Material	ABS+ Aluminum alloy
Color	Dark grey/Silver/Rose gold
Dimensions	120×35.4×14mm
Output Port	USB-C
Compatible SSD	M.2 Type 2230, 2242, 2260, 2280 Four Sizes
Support Capacity	Max 4TB
Installation Method	Tool-free
System Supported	Windows/MacOS/Linux/Android

Notes

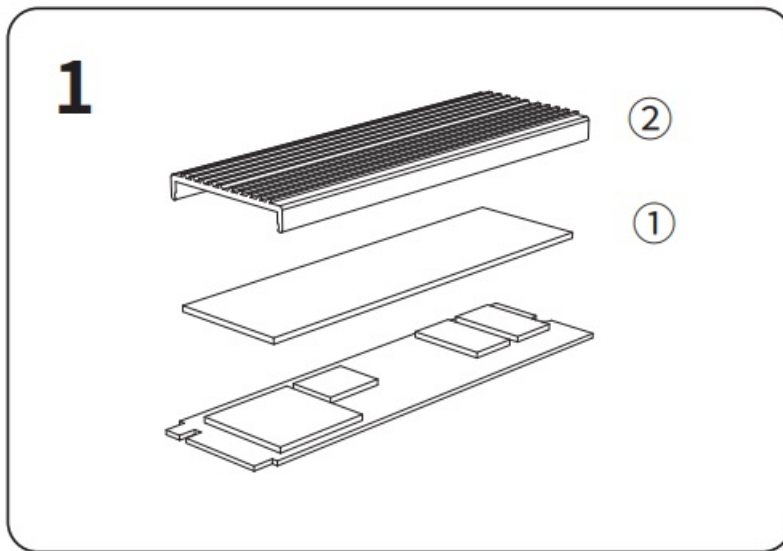
1. Support intelligent hibernation technology (idle 10 minutes into hibernation), energy saving and environmental protection, improve the service life of the enclosure.
2. Support TRIM, UASP protocol.

How to Use

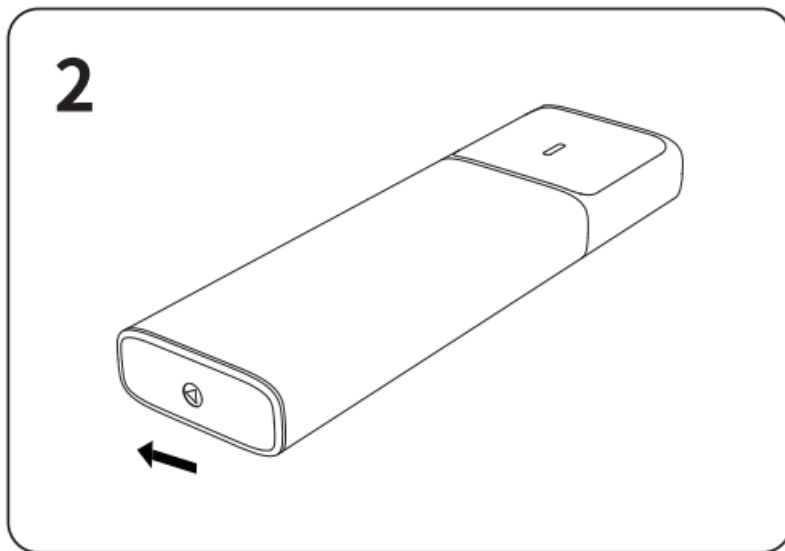
The illustration is only for your reference.

1. Paste the thermal pad and fin to the SSD.

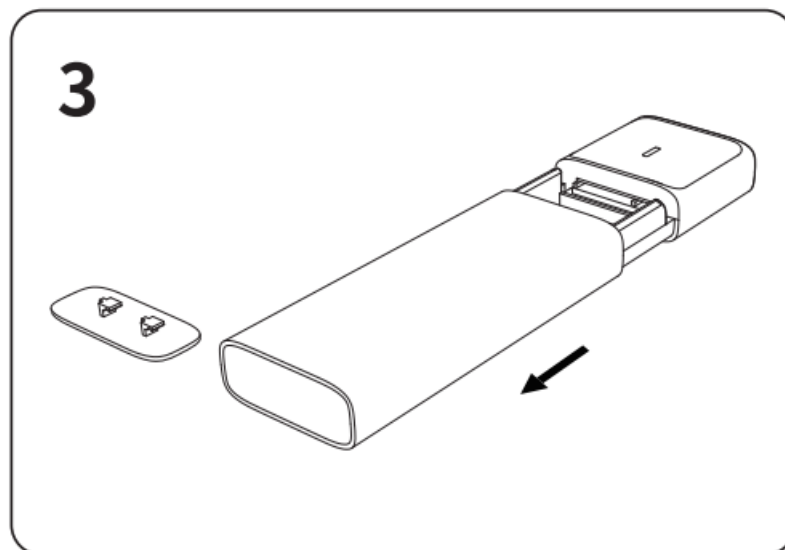
Note: STPWM2 skips this step.



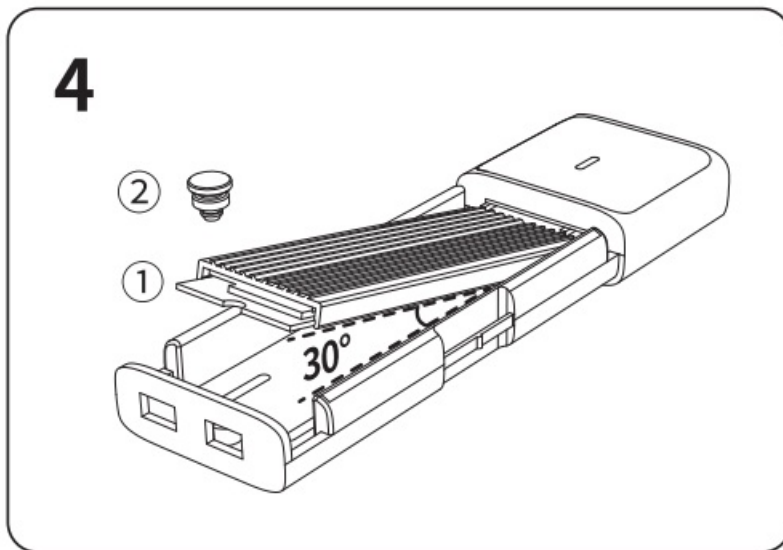
2. Follow the arrow direction to slide open and remove the front cover.



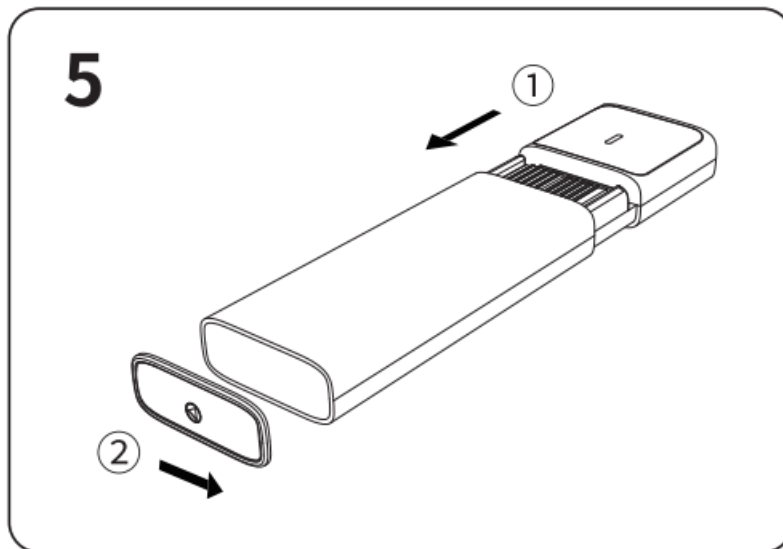
3. Then remove the case.



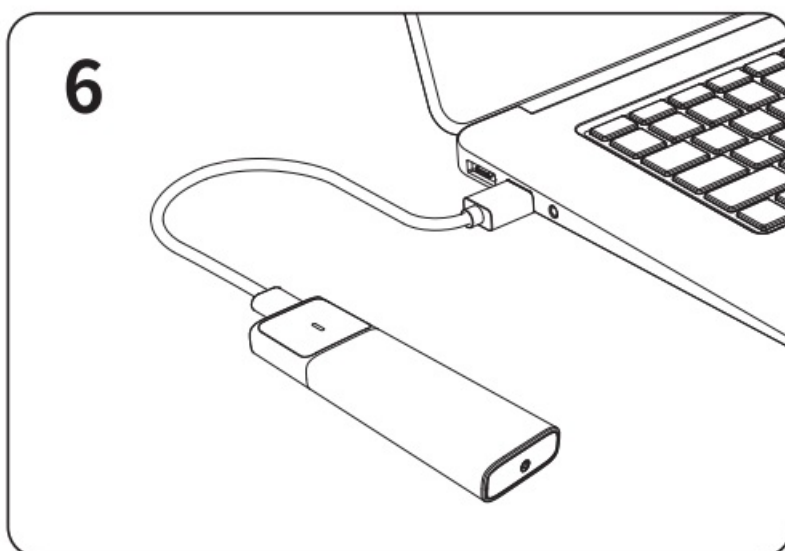
4. With the drive oriented at 30°, align the bay and insert it, press the drive down, and secure the end of the drive with the silicone screw.



5. Push the hard drive tray into the enclosure and snap on the front cover to complete the installation.



6. Connect the terminal device and plug and play.



Connecting Computer

After installing the hard drive, use the original power adapter or AC power cord to plug into the power port, use the data cable to connect to the product's data port and the other end to connect to the computer's USB port, turn on the power switch after connecting, and you are ready to use.

Formatting the hard drive

Note: A brand new hard drive needs to be formatted, otherwise the computer will not be able to read the drive. For specific formatting steps, please refer to the "Hard Disk Format Partition Operation" in the instructions.

Uninstalling the hard disk

Note: When you need to uninstall the hard disk, please stop reading and using the data files in the hard disk first, otherwise it will not be able to exit properly, and forcing it to exit may cause your data to be abnormal or lost.

1. Uninstall from windows system:

First stop the hard drive reading and writing operations, then click the small USB icon in the taskbar, select the disk drive you want to uninstall, and finish the uninstallation.

2. Uninstall from MAC system:

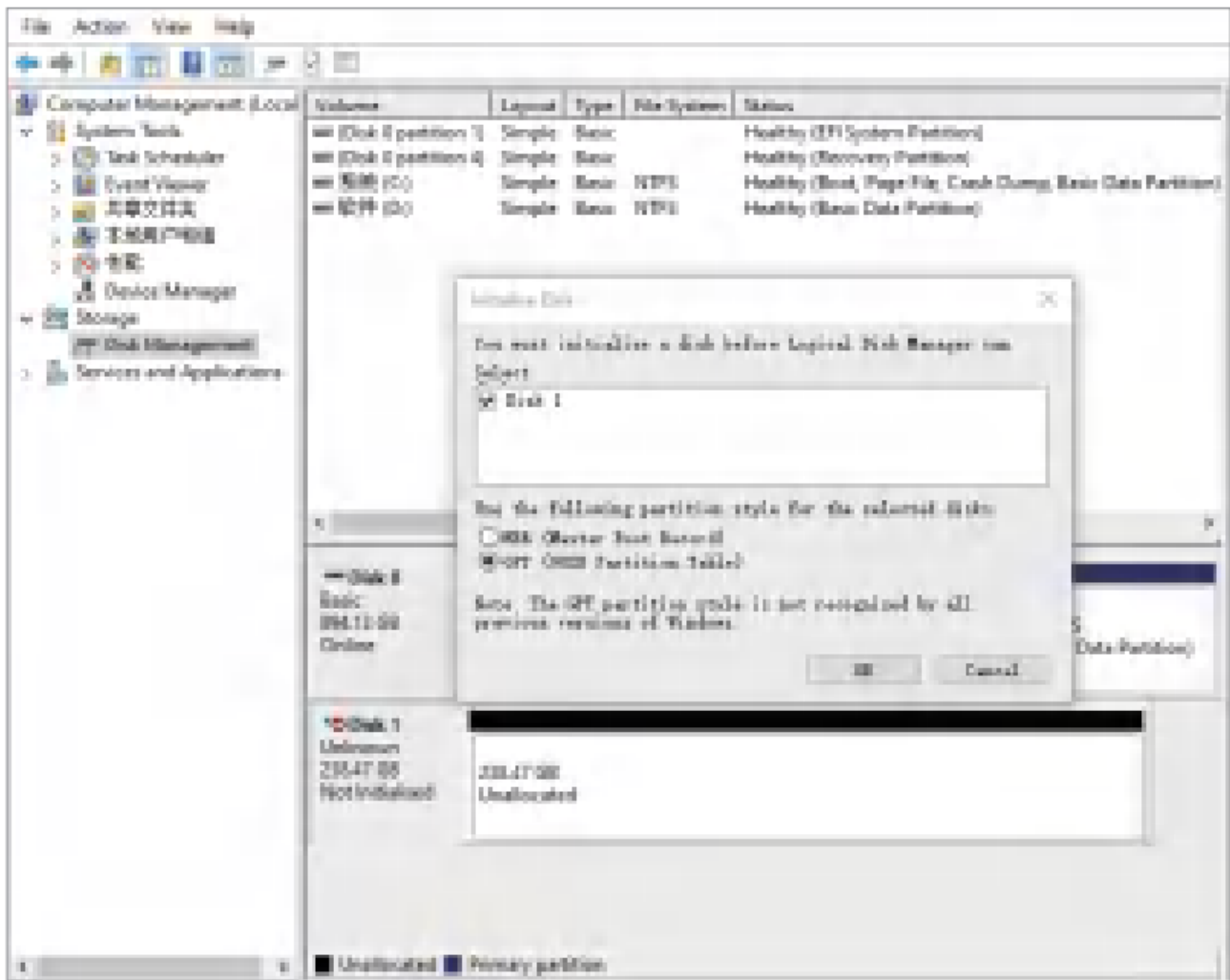
First stop the hard drive reading and writing, right-click the desktop mobile device icon, and select "Push" in the pop-up menu to safely remove it.

Formatting and partitioning the hard disk (Windows system)

You need to initialize and format the partition first, otherwise it won't work.

If it is a brand-new hard drive, please initialize and format the partition accord following steps:

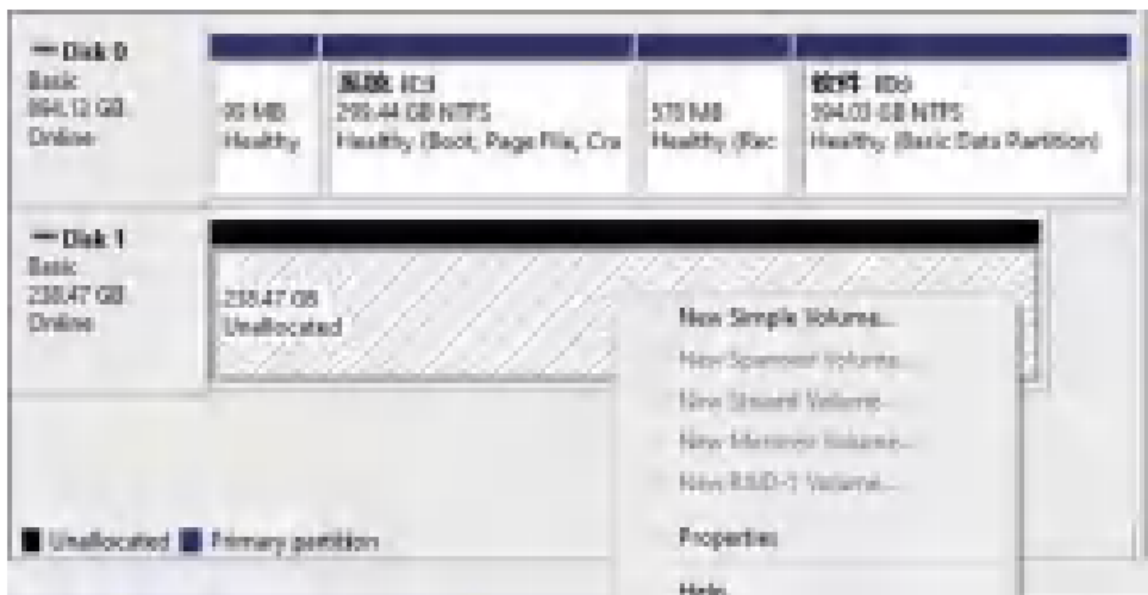
1. Please ensure the enclosure is installed properly, and connected to the computer.



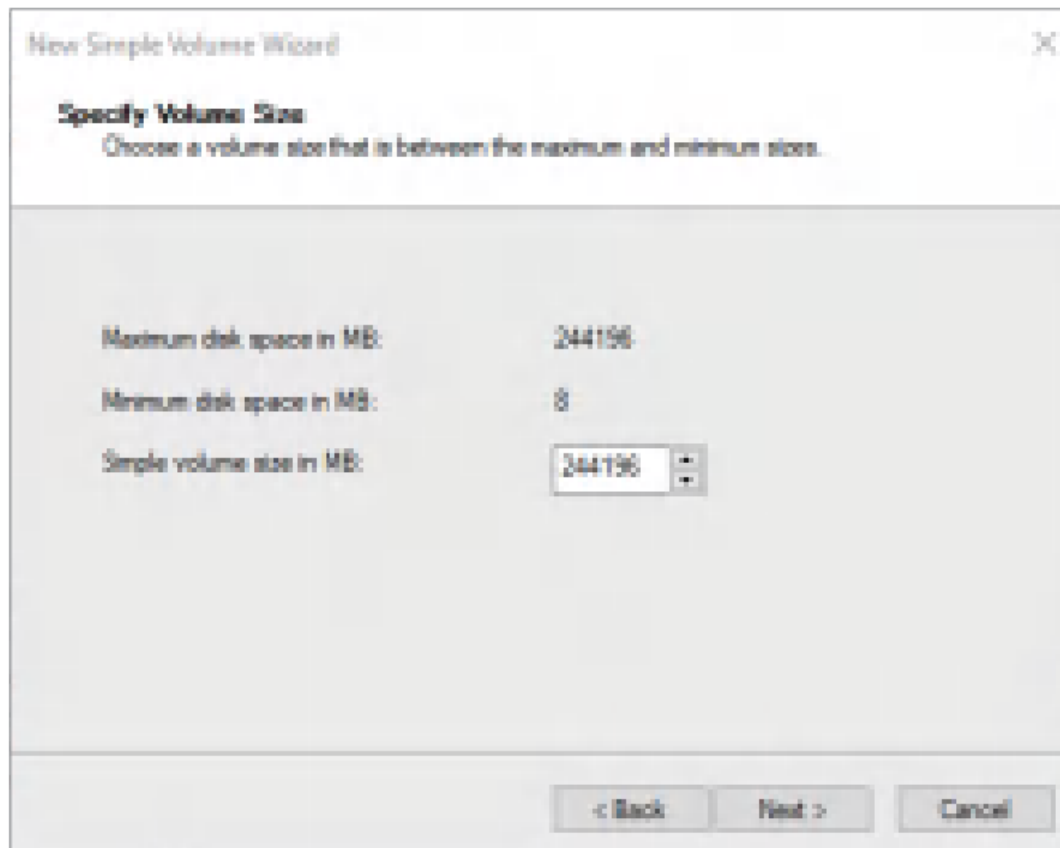
- Right click "This PC", select "Manage", then select "Disk Management" on the left side of the window. Choose your new Disk and format it. Then select "MBR" or "GPT" partition form and click "OK".

Note:

- If the disk capacity is less than 2TB, please use MBR partition form to initialize the hard disk.
 - If the disk capacity is greater than 2TB, the disk must be initialized by using of GPT partition form, otherwise only 2TB capacity will be available and the excess capacity will not able to use
- Right click the "unallocated" disk space, select "new simple volume" to start formatting the hard drive partition.

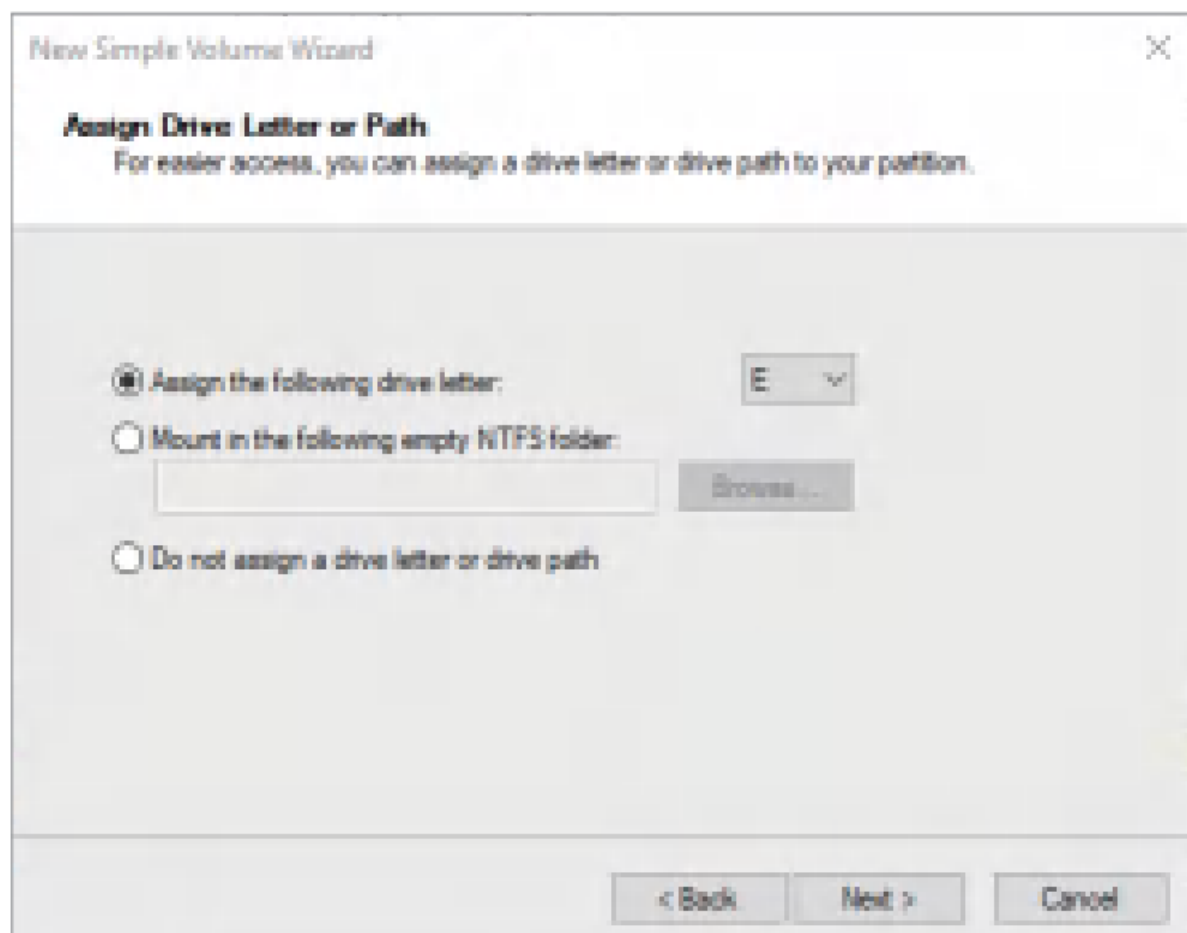


4. When setting the capacity of disk partition, can customize the partition capacity, or set the default maximum simple volume size, and there will be only one disk partition.



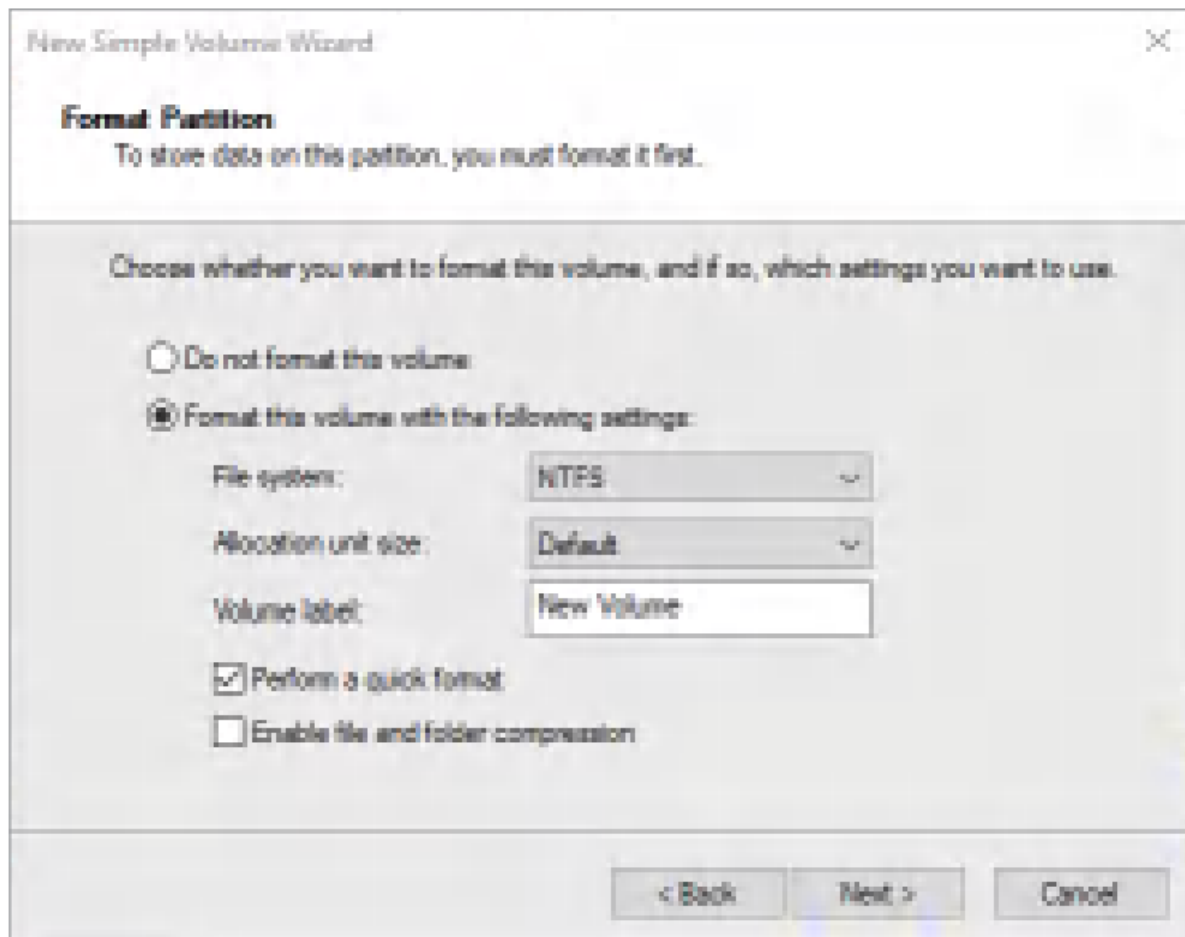
The image shows a Windows 'New Simple Volume Wizard' window at the 'Specify Volume Size' step. The title bar reads 'New Simple Volume Wizard' with a close button. Below the title bar, the section is titled 'Specify Volume Size' with a subtitle 'Choose a volume size that is between the maximum and minimum sizes.' The main area contains three labels: 'Maximum disk space in MB:' with a value of 244196, 'Minimum disk space in MB:' with a value of 8, and 'Simple volume size in MB:' with a text box containing 244196 and a spinner control. At the bottom, there are three buttons: '< Back', 'Next >', and 'Cancel'.

5. When setting the capacity of disk partition, can customize the partition capacity, or set the default maximum simple volume size, and there will be only one disk partition.



The image shows a Windows 'New Simple Volume Wizard' window at the 'Assign Drive Letter or Path' step. The title bar reads 'New Simple Volume Wizard' with a close button. Below the title bar, the section is titled 'Assign Drive Letter or Path' with a subtitle 'For easier access, you can assign a drive letter or drive path to your partition.' The main area contains three radio button options: 'Assign the following drive letter:' (selected) with a dropdown menu showing 'E', 'Mount in the following empty NTFS folder:' with a text box and a 'Browse...' button, and 'Do not assign a drive letter or drive path'. At the bottom, there are three buttons: '< Back', 'Next >', and 'Cancel'.

6. Allocating the drive letter and path, (e.g. Explorer, C, D, E, F, G drive) drive letter.



7. Format partition, able to set file system format (NTFS, FAT32 or exFAT), assign unit size (default set), volume label name, recommend “perform quick format”, and click “next” when configuration is completed.

New Simple Volume Wizard

Format Partition

To store data on this partition, you must format it first.

Choose whether you want to format this volume, and if so, which settings you want to use.

☐ Do not format this volume.

☒ Format this volume with the following settings:

File system: NTFS

Allocation unit size: Default

Volume label: New Volume

☒ Perform a quick format

☐ Enable file and folder compression

< Back Next > Cancel

8. Click “finish” to perform the final step of formatting partition.

New Simple Volume Wizard

Completing the New Simple Volume Wizard

You have successfully completed the New Simple Volume Wizard.

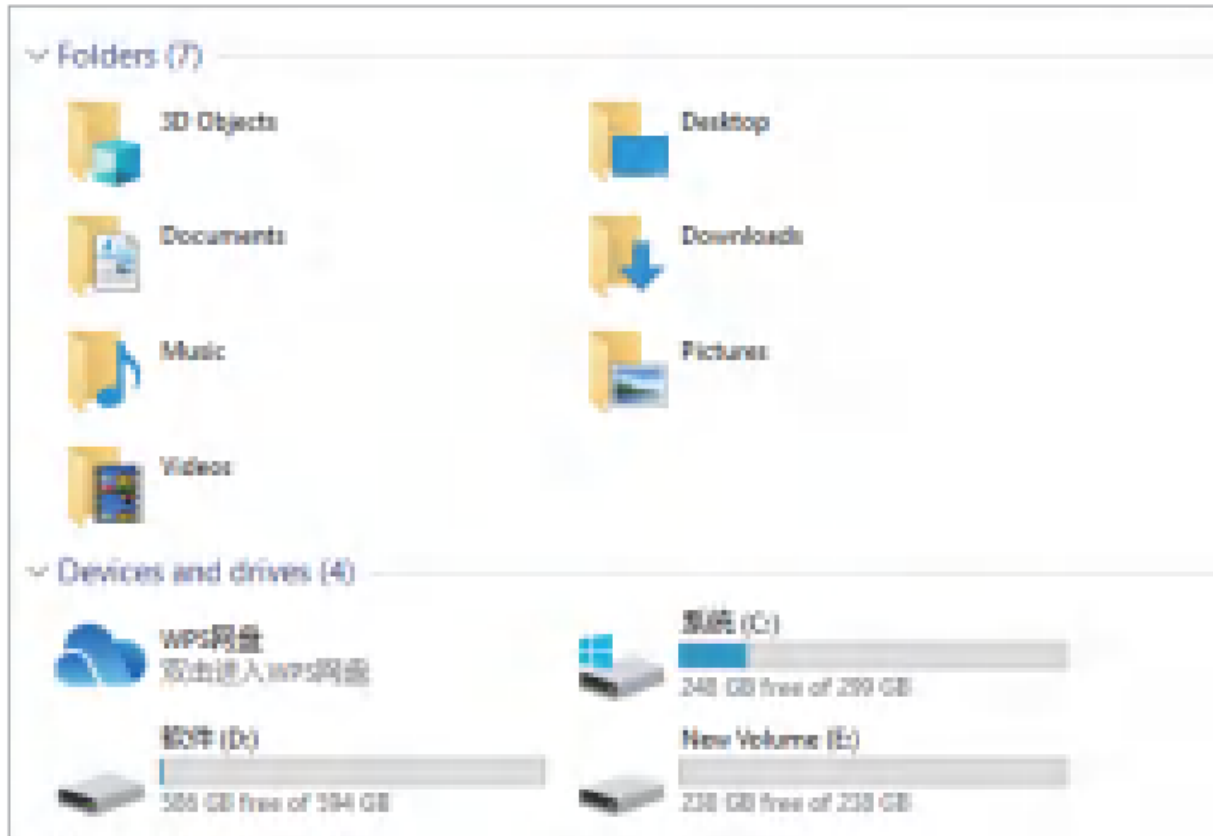
You selected the following settings:

Volume type: Simple Volume
Disk selected: Disk 1
Volume size: 244196 MB
Drive letter or path: E:
File system: NTFS
Allocation unit size: Default
Volume label: New Volume
Quick format: Yes

To close this wizard, click Finish.

< Back Finish Cancel

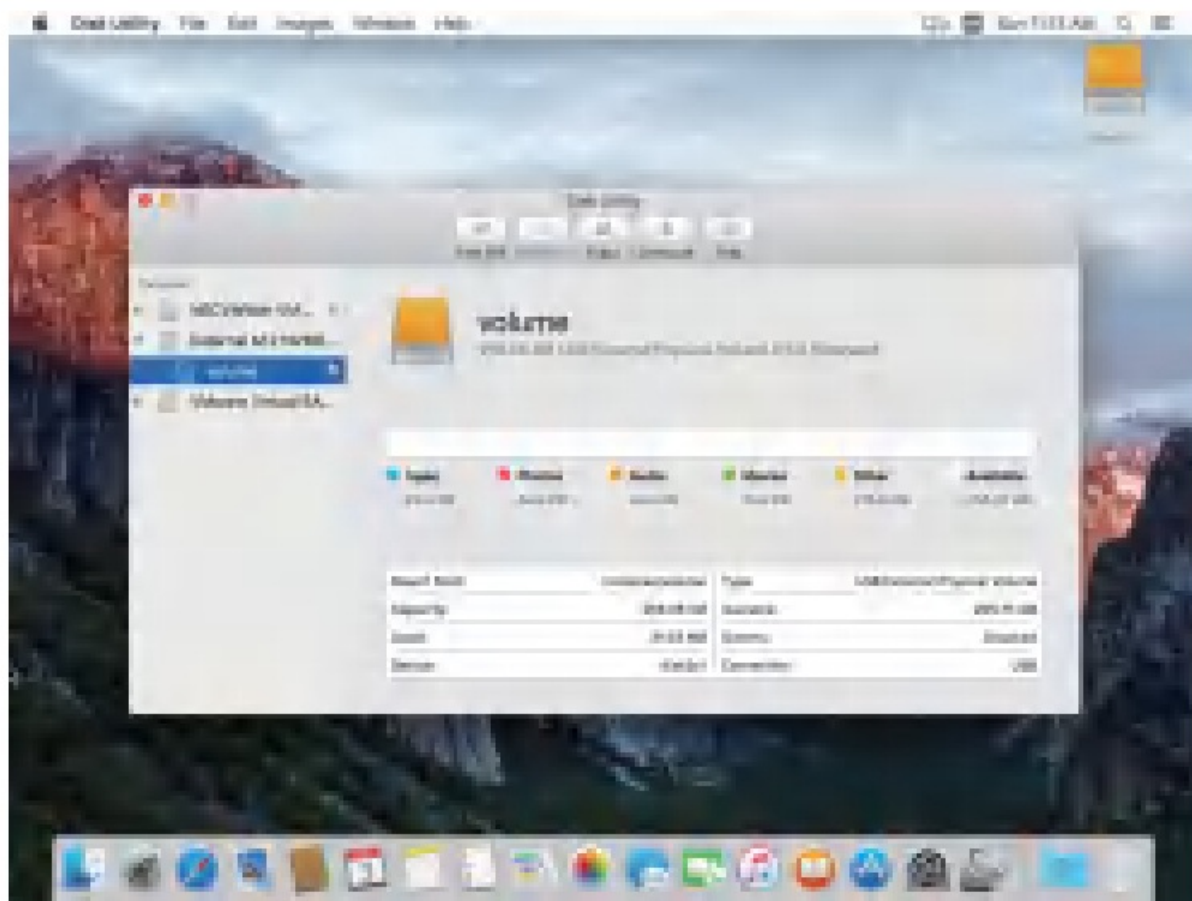
9. It will take 5-30 seconds, and the new partition drive letter will be displayed in the explorer after formatting.



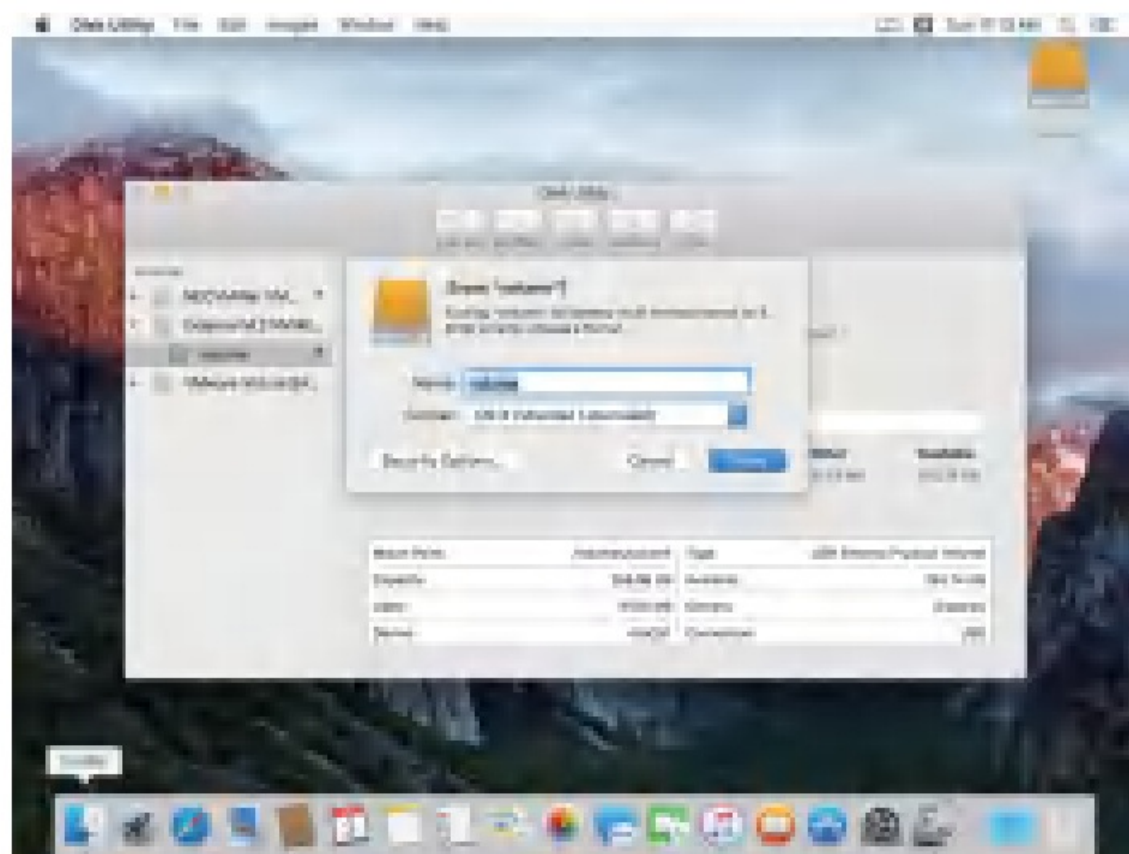
Formatting and partitioning the hard disk (for MacOS)

If you are using a brand-new hard disk drive, you need to initialize the hard disk drive to set it up, otherwise the hard disk drive will not work properly. To initialize the hard disk, please use the following method.

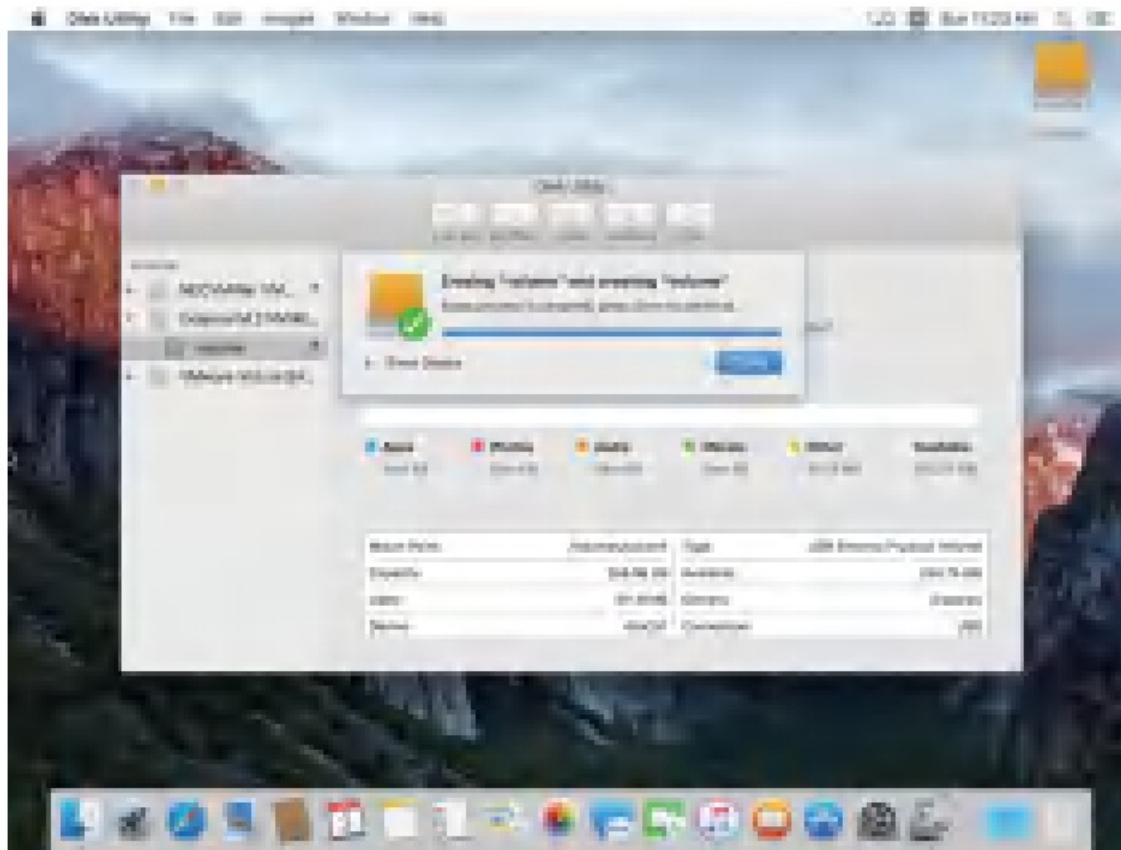
1. Ensure that the drive case is properly installed and connected to the computer.
2. Go to the "Disk Utility" of your computer. Select the "unnamed" hard disk with a gray color under the "External" status bar on the left.



- Click "Wipe" to enter the setup interface to name and format the drive. When finished, click "Wipe" in the lower right corner of the setup interface to initialize the drive.



- Click "Finish" after the automatic initialization is completed. The desktop will show the available drives, and you can use the drive normally at this point.



Notice

1. Hard drive is delicate. Please read the manual carefully before use and install it correctly by following the manual.
2. New hard drive needs to be initialized before use or it cannot be recognized.
3. Please do not hit, throw, or puncture the product, and avoid dropping, squeezing, or bending the product.
4. Avoid placing the product in high-temperature, low-temperature, humid or dust environment.
5. Please do not place this product in corrosive environment and do not use other chemical solutions to clean the product.
6. Avoid placing the product or accessories in devices with strong electromagnetic fields and keep the product away from magnetic equipment.
7. Keep the product and accessories away from children. Do not allow children to use the product without supervision.
8. Do not disassemble or repair the product and accessories by yourself. Please contact authorized support center for help.
9. If the product needs to be equipped with power adapter, please use the power adapter specified by our company.
10. If you have any questions during the use of this product, please feel free to contact your dealer or SETMSPACE Customer Service Center.

Warranty Description

Warranty Regulations

SETMSPACE products offers 24 months warranty since the date you place order. So when you need any help, please do not hesitate to contact us.

Warranty Restrictions

Warranty terms do not apply to the following cases:

1. Beyond the warranty period.
2. Unauthorized disassembly, alteration or repair of the product, as well as collision, into the liquid, the Drop and other man-made damage.
3. Damage caused by force majeure such as flood, fire, lightning, earthquake, etc.
4. Inconsistent with the instructions for use of the wrong operation.
5. Product or box barcode does not match the actual product, as well as being altered, torn.
6. Unauthorized use of non-original accessories caused by the damage.
7. No valid proof of purchase

Copyright Statement

All rights reserved to Shenzhen ORICO Technologies Co., Ltd.

Thank you for purchasing SETMSPACE products, in order to better use all the functions of this product, please read this instruction manual carefully before using the product features, instructions for use and precautions.

SETMSPACE is a registered trademark of Shenzhen ORICO Technologies Co., Ltd. All other product names, trademarks, service names and company names mentioned in this instruction for use are owned by their respective owners.

Shenzhen ORICO Technologies Co., Ltd reserves the right to modify any information in these Terms of Use at any time without prior notice. Unless otherwise agreed, this instruction for use is for guidance only and all statements, information, etc. in this instruction for use do not constitute any form of guarantee. Shenzhen ORICO Technologies Co., Ltd shall not be liable for any special, incidental, indirect, or consequential damages arising out of the use of the content related to this instruction for use and the products described in this instruction for use, nor for any loss of profits, data, goodwill, or anticipated savings. To the extent permitted by relevant law, in any event, the maximum liability of Shenzhen ORICO Technologies Co., Ltd for damages suffered by you as a result of using the products described in these instructions for use (except for damages under applicable law in cases involving personal injury) is limited to the price paid by you for the product.

Customer Support


After-sales Contact

After-sales support email: support@setMspace.com

After-sales service hotline: +86-400-007-5241



Documents / Resources

 <p>SETMSPACE STPW Series M.2 SSD Drive Enclosure</p>	<p>SETMSPACE STPW Series M2 SSD Drive Enclosure [pdf] User Manual</p> <p>STPW Series M2 SSD Drive Enclosure, STPW Series, M2 SSD Drive Enclosure, SSD Drive Enclosure, Drive Enclosure, Enclosure</p>
--	---

References

- [User Manual](#)