



## FS-4 Plus Food Server Soup Warmer User Manual

[Home](#) » [SERVER](#) » FS-4 Plus Food Server Soup Warmer User Manual 

### FS-4 Plus Food Server Soup Warmer User Manual



### Thank You

for purchasing our 4-Quart Food Warmer to keep your soup, chili, gravy or sauce at the perfect temperature from the first serving to the last.

QUICKLY HEAT TO SAFE SERVING TEMPERATURE

## Contents

- 1 UNIT SET-UP
- 2 SAFETY
- 3 RETHERMALIZATION
- 4 HOT FOOD HOLDING
- 5 UNIT TAKE-DOWN
- 6 CLEANING
- 7 CARE OF STAINLESS STEEL
- 8 WIRING
- 9 ACCESSORY ITEMS
- 10 TROUBLESHOOTING
- 11 SERVER PRODUCTS LIMITED WARRANTY
- 12 GENERAL SERVICE, REPAIR OR RETURNS
- 13 NEED HELP?
- 14 Documents / Resources
  - 14.1 References
- 15 Related Posts

## UNIT SET-UP

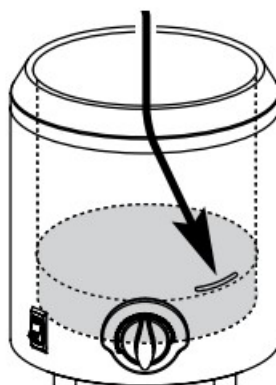
WASH ALL PARTS PROPERLY BEFORE EVERY USE.

### FILL WATER VESSEL BASIN

- Fill 2.5 cups (20 oz) of water up to water level line inside basin.
- Do not overfill



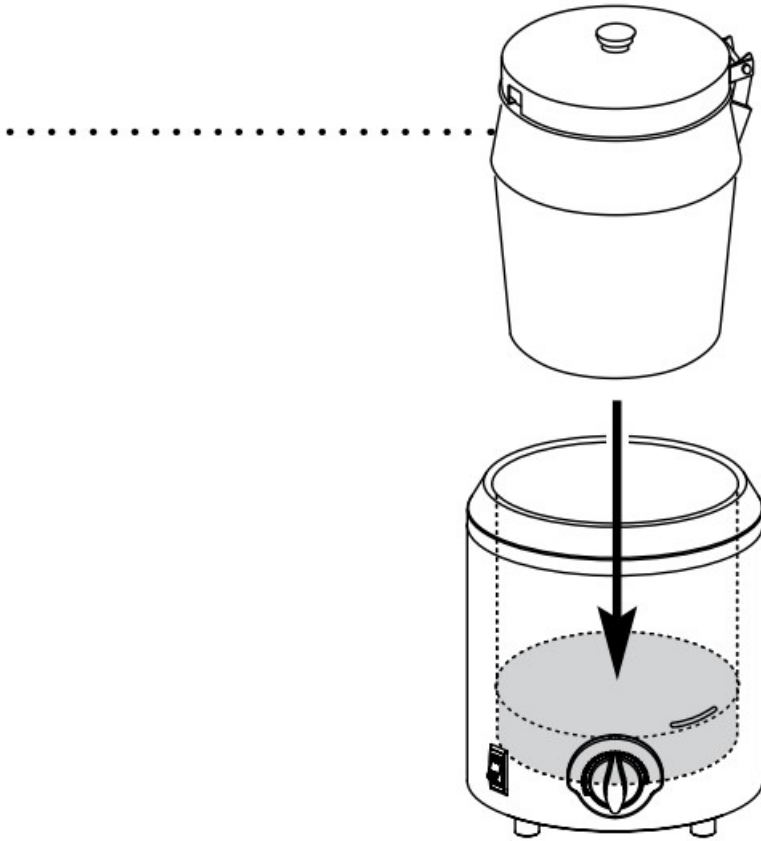
**2.5 Cups Water = 0.59 Liter**



**TIP:** Check water levels throughout the holding period to ensure even heating. Filtered water is recommended to deter corrosion.

#### **PUT INSET INTO WATER VESSEL BASIN**

Product being served must always be inside inset.  
Never place food directly into water vessel basin of unit.



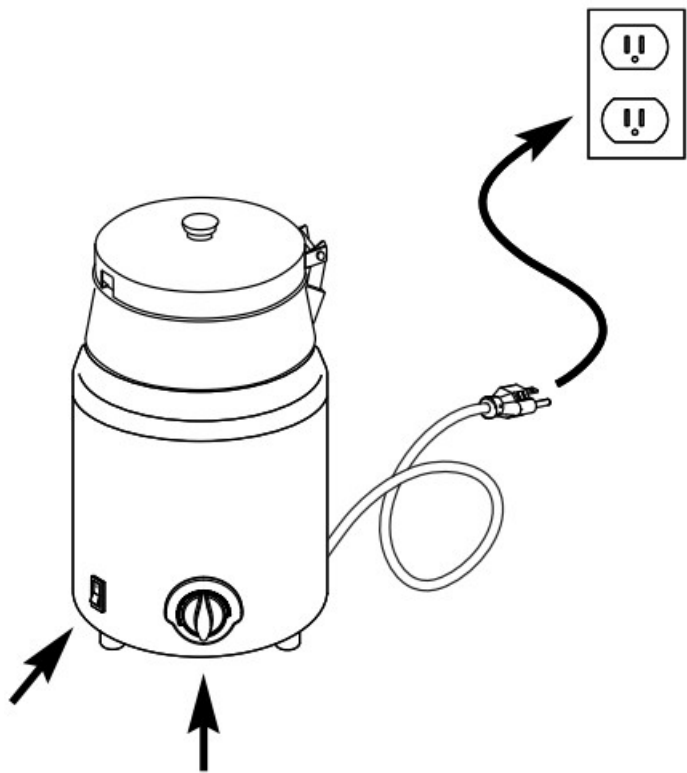
**TIP:** Simplify change-outs with an additional inset and lid. Order item #81111.

**PLUG CORD into power source**

**PRESS SWITCH to the “ON” position**

**SET THERMOSTAT KNOB**

to recommended serving temperature.



- Pull knob out to turn and adjust.
- Push knob in to lock.
- Dial indicator uses increments of 5° F.
- Thermostat range is 75°—210° F. (24°—99° C)
- To heat unit faster, thermostat may TEMPORARILY be rotated to maximum

## SAFETY



### WARNING

ELECTRICAL SHOCK COULD OCCUR

This unit must be earthed or grounded.

This requires all three prongs (terminals) on cord plug to be plugged into power source.



According to food and safety regulations, most foods must be stored and/or served at certain temperatures or they could become hazardous. Check with local food and safety regulators for specific guidelines.

Be aware of the product you are serving and the temperature the product is required to maintain. Server Products, Inc. can not be responsible for the serving of potentially hazardous product.

## RE THERMALIZATION

**Rethermalization** of food products is achieved by this appliance when it elevates the food product temperature

from a refrigerated 40°F (4°C) to a safe serving temperature of 165°F (74°C) within a period of 2 hours

### **PRE-HEAT UNIT**

for at least 5 minutes with:

- Correct amount of water in basin.
- Lid closed.
- Thermostat knob set at maximum setting.

### **ADD FOOD PRODUCT**

- Put food into the inset.
- Maximum capacity of food product is 4 quarts (16 cups). Do not overfill.

### **MAINTAIN SAFE HOT FOOD HOLDING**

- After food reaches safe serving temperature of 165°F (74°C), maintain product temperature at or above 150°F (66°C).
- Adjust controller if needed to avoid overheating food.

### **MONITOR FOOD CLOSELY FOR FOOD SAFETY.**

The United States Public Health Service recommends that hot food be held at a minimum of 140°F (60°C) to help prevent bacteria growth.

COLD FOOD IS NOT TO BE ADDED TO THE UNIT FOR RETHERMALIZATION WHILE HOT FOOD IS BEING HELD.

### **HOT FOOD HOLDING**

**Hot Food Holding** is achieved with this appliance when it maintains a food product temperature at or above 150°F (66°C), in all locations throughout the product, for a minimum of 2 hours, even if any lid, cover, or pump is removed. The lid, cover, or pump is recommended to help maintain product temperature.

### **PRE-HEAT UNIT**

for at least 5 minutes with:

- Correct amount of water in basin.
- Lid closed.
- Thermostat knob set at maximum setting.

### **ADD FOOD PRODUCT**

- Put food which has already been preheated to 150°F (66°C) into the inset.
- Maximum capacity of food product is 4 quarts (16 cups). Do not overfill.



NSF International and ANSI (American National Standards Institute) list this unit as a

## UNIT TAKE-DOWN

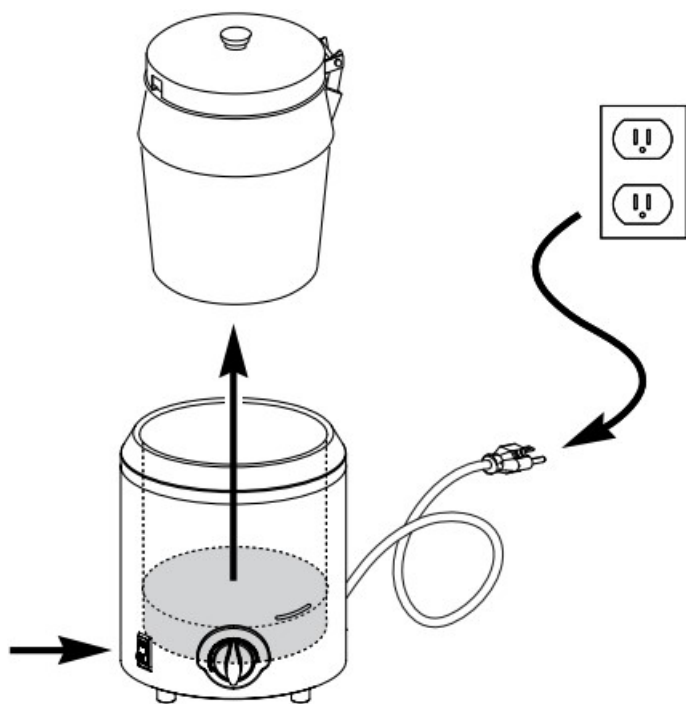
1. PRESS SWITCH to the “OFF” position.
2. UNPLUG CORD



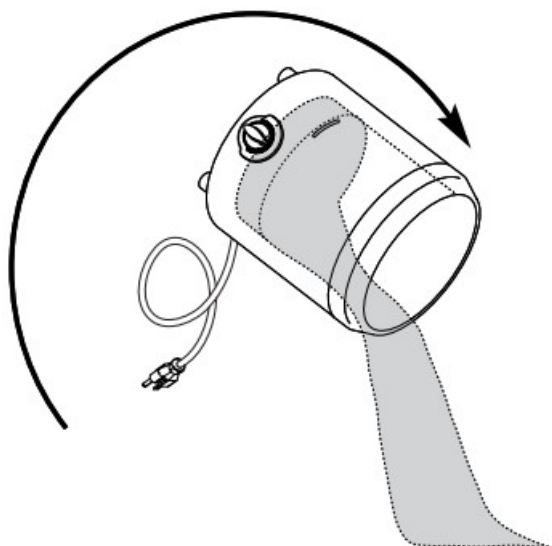
**CAUTION- HOT**

Allow unit to cool before continuing.

3. REMOVE INSET FROM WATER VESSEL BASIN



4. EMPTY WATER FROM WATER VESSEL BASIN after each use.



**TIP:** Remember to empty the water each day rather than add—  
This will greatly extend the life of your warmer.

5. DRY

thoroughly with a soft dry cloth.

Proper drying after each use helps maintain the stainless steel.

## CLEANING

### WARNING

ELECTRICAL SHOCK COULD OCCUR

- Electrical components of unit could be damaged from water exposure or any liquid.
- Never immerse unit into water or any liquid.
- Never use any water jet or pressure sprayer on unit.
- Ensure unit is “OFF” and unplugged.



### CAUTION- HOT

Allow unit to cool before cleaning.

#### 1. CLEAN VESSEL, INSET & LID

- Before first use and after use daily, disassemble and clean unit.
- Ensure unit is “OFF” and unplugged.
- Wash with dishwashing soap and hot water.

#### 2. RINSE fully with clear water.

#### 3. SANITIZE all parts according to local sanitization requirements. All parts in contact with food must be sanitized.

#### 4. DRY all parts fully with a clean soft cloth.

#### 5. CLEAN EXTERNAL SURFACES

- Wipe daily with a clean damp cloth.
- Dry with a clean soft cloth.
- Glass and surface cleaners approved for use in food contact areas may be used.

## CARE OF STAINLESS STEEL

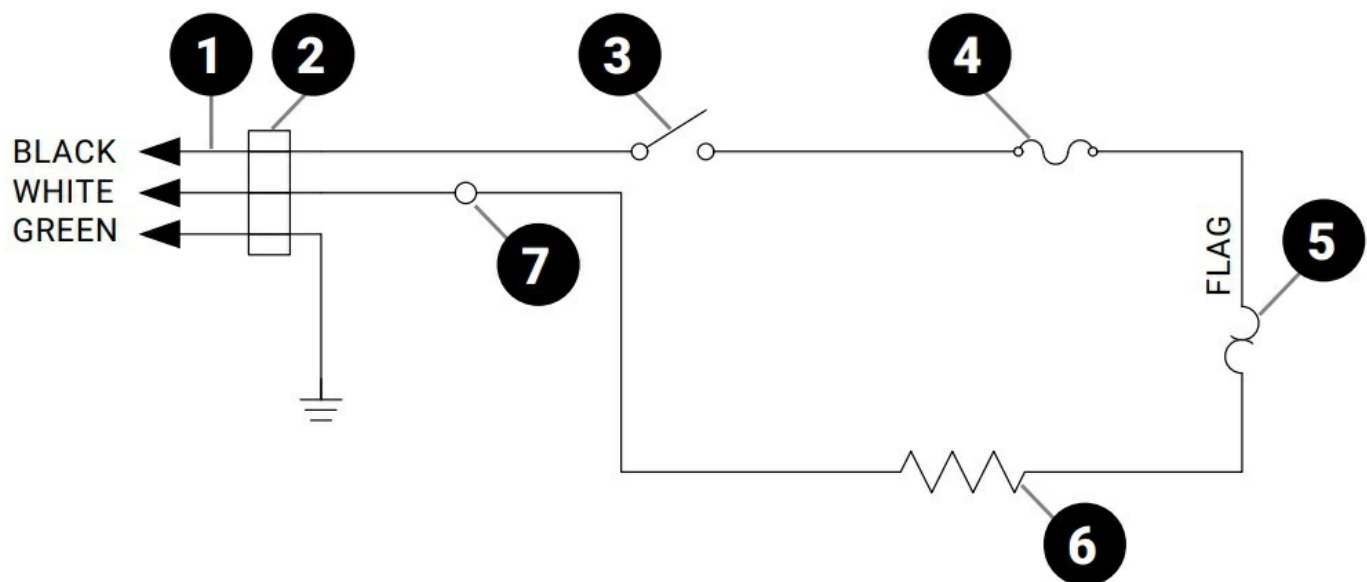
This warmer, water vessel and food inset with lid are constructed of stainless steel— one of the best materials for food serving and storage.

If you notice corrosion beginning on any stainless steel surface, you may need to change the cleansing agent, sanitizing agent, or the cleaning procedures you are using.

- A mildly abrasive nylon or brass brush may be used to remove any stubborn food or mineral deposits on interior surfaces of unit.
- Fully rinsing and drying all parts can help prevent corrosion. Elements and minerals in tap water can accumulate on stainless steel parts and create corrosion.
- Do not use abrasive, caustic or ammonia based cleansers.
- Do not use products containing acids, alkalines, chlorine, or salt. These agents can corrode stainless steel.
- Do not use metal scrapers or cleaning pads that could scratch surfaces.

## WIRING

UNIT 81000 | 120V | USA



1. Cord Assembly
2. Bushing/Strain Relief
3. Rocker Switch
4. Thermal Cutout
5. Thermostat
6. 500W Heating Element
7. Terminal Splice

## ACCESSORY ITEMS

### DID YOU KNOW?

This warmer can be retrofit to another dispensing method, so you can also heat (3) squeeze bottles, pump precise portions or ladle from a 3-quart jar or #10 can.

### SQUEEZE BOTTLE SIGNATURE TOUCH PART

Bottle Inset & (3) 16 oz Bottles 86819  
 High-Density Squeeze Bottles, 16 oz 86809





#### PORTION CONTROLLED DISPENSING PART

Stainless Steel Pump, 1 oz max 81320  
 Stainless Steel Jar, 3 qt94009  
 Storage Lid 94008  
 Jar or #10 Can Spacer (required) 82063



#### LIGHT LADLING PART

Stainless Steel 10" Ladle, 1 oz 82561  
 Adapter Ring 82507  
 Lift-Off Lid 82509  
 Stainless Steel Jar, 3 qt94009  
 Storage Lid 94008  
 Jar or #10 Can Spacer (required) 82063



### **WANT ASSISTANCE?**

Contact our customer service team at 800.558.8722 or [spsales@server-products.com](mailto:spsales@server-products.com)

### **TROUBLESHOOTING**

#### **UNIT DOES NOT HEAT?**

- Ensure cord is securely plugged in.
- Ensure power is available from source.
- Ensure unit is on.
- Ensure thermostat knob is set correctly.
- Ensure that the correct amount of water is in basin.
- Do not allow any of the electrical components to get wet. Moisture may cause the unit to trip breaker or GCFI.  
If moisture is suspected, discontinue use. Allow unit to fully air dry

#### **PREVENT PITTING ON INSIDE SURFACE OF VESSEL**

- Empty water from water vessel basin each day.
- Thoroughly dry basin each day.
- If possible, use filtered water to fill vessel basin

### **SERVER PRODUCTS LIMITED WARRANTY**

**2** YEAR  
WARRANTY

This Server product is backed by a two-year limited warranty against defects in materials and workmanship. See [Server-Products.com](http://Server-Products.com) for details.

### **GENERAL SERVICE, REPAIR OR RETURNS**

Before sending any item to Server Products for service, repair, or return, contact Server Products customer service to request a Return Authorization Number. Merchandise must be sent to Server Products with this number. Service is extremely prompt. Typically, units are repaired and ship out within 48 hours.

Merchandise being returned for credit must be in new and unused condition and not more than 90 days old and will be subject to a 20% restocking charge. Electrical parts (thermostats, heating elements, etc.) are not returnable.

Service Cord: Specific tools are required for safe and proper power supply cord removal and installation. If cord must be replaced, only a representative of the OEM (original equipment manufacturer) or a qualified technician may replace cord. Cord must meet code designation H05 RN-F requirements.

## NEED HELP?

**Server Products Inc.**  
3601 Pleasant Hill Road  
Richfield, WI 53076 USA

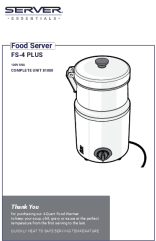
**Chat with us!**  
[spsales@server-products.com](mailto:spsales@server-products.com)  
262.628.5600 | 800.558.8722

Please be prepared with your Model, P/N and Series located on the lid or base of the unit.

Example:



## Documents / Resources

	<p><a href="#">SERVER FS-4 Plus Food Server Soup Warmer [pdf] User Manual</a> FS-4 Plus Food Server Soup Warmer, FS-4 Plus, Food Server Soup Warmer, Server Soup Warmer, Soup Warmer, Warmer</p>
---	--

## References

- [products.com](https://www.server-products.com)
- [Server Products](#)

- [Chat now](#)
- [Warranty Information | Server Products](#)

[Manuals+](#)