



SERVER CW-DI ConserveWell Drop-In with Trimmer User Guide

[Home](#) » [SERVER](#) » SERVER CW-DI ConserveWell Drop-In with Trimmer User Guide 



Contents

- [1 CW-DI ConserveWell Drop-In with Trimmer](#)
- [2 Documents / Resources](#)
 - [2.1 References](#)
- [3 Related Posts](#)

CW-DI ConserveWell Drop-In with Trimmer

QUICK START GUIDE

Server ConserveWell ®

Tips and tricks to help you get started with your new ConserveWell ®

1. Remove unit from box. Wash pan and pan liner properly before use.



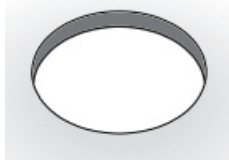
Never immerse the complete unit into water. Electrical shock could occur.



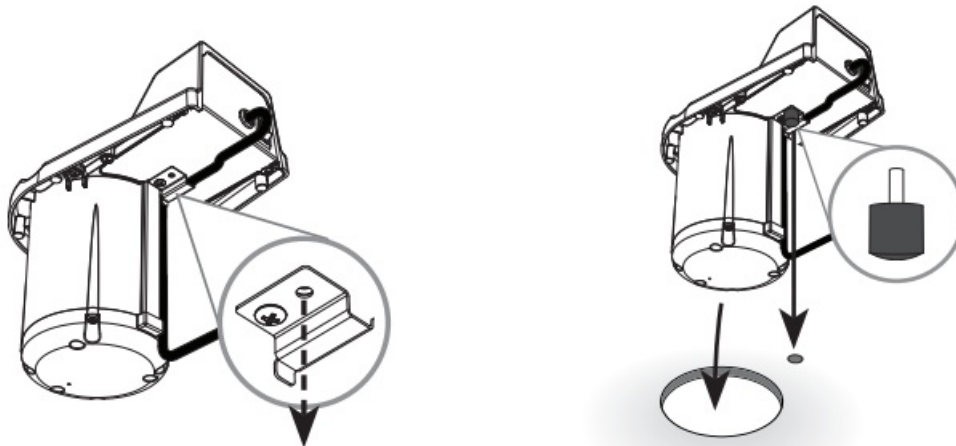
Only use with utensils safe in high temperatures. Do not use liquid or gel-filled utensils. Handles become extremely hot.



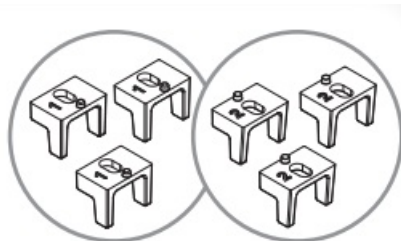
2. Select a countertop hole for the unit to drop into. Consider the best placement for ease of use. 6" of clearance is needed below the countertop. Ensure cord can reach the power source. The unit fits within existing countertop hole cutout diameters 5.5" – 6.5". Unit is factory assembled to fit 6" diameter holes. For a new hole, use appropriate personnel and tools to cut a 6" diameter hole.



3. OPTIONAL – Add an anti-rotational foot to prevent unit pivoting within the countertop hole. Remove outer screw from cord guard. Insert anti-rotational foot in place of removed screw. Drill foot hole in the countertop. Refer to cutout template in the manual for template and dimensions.



4. Select location block hardware to create a proper fit within the countertop hole. Hole diameter determines which 3 location blocks to use. If the size is between two listed dimensions, refer to the smaller diameter.



COUNTERTOP

HOLE DIAMETER LOCATION BLOCKS

5.5"	No location blocks needed
5.75"	BLUE, embossed with "1"
6"	BLUE, embossed with "1"
6.25"	RED, embossed with "2"
6.5"	RED, embossed with "2"

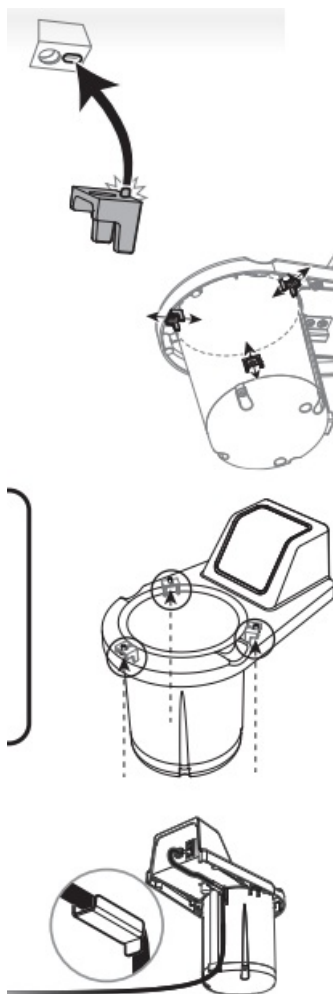
5. Attach 3 location blocks into slots on the underside of the rim. Slide location blocks either away from or towards the base. Refer to chart.

COUNTERTOP

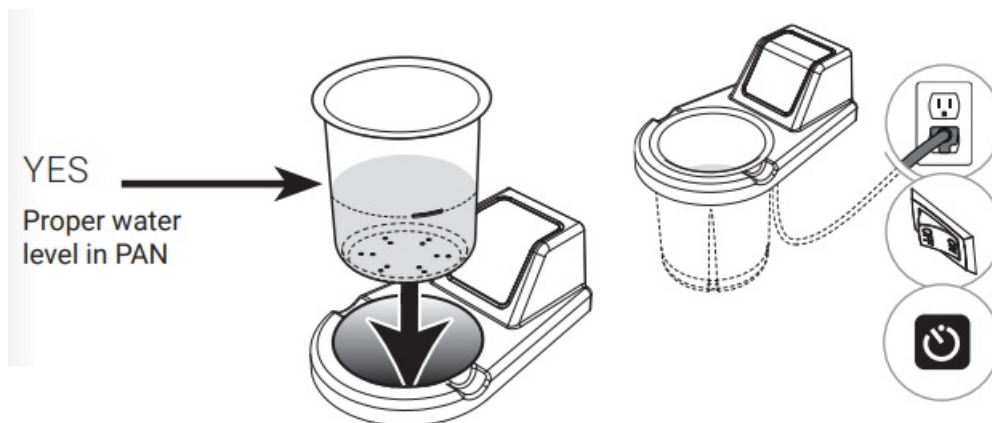
HOLE DIAMETER LOCATION BLOCK FITTING

5.5"	Remove all location blocks
5.75"	BLUE, slide towards the base
6"	BLUE, slide away from the base
6.25"	RED, slide towards the base
6.5"	RED, slide away from the base

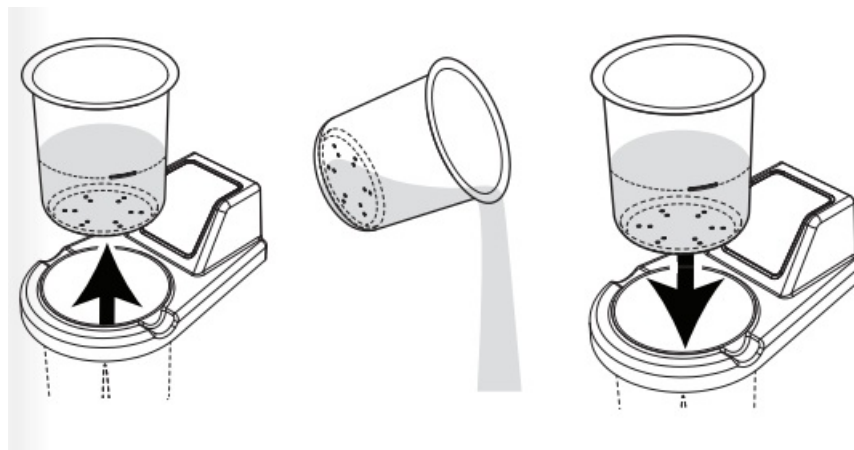
Insert unit and cord into countertop hole. Use cord guard only if cord is plugged in under counter.



6. Insert green pan liner into the bottom of the pan. Fill 28 oz. of hot water up to the fill-line of the pan. Insert pan of water into a basin. Pour water into the pan only, never directly into the basin. Plug the cord into a power source. Press switch on the back of the unit to turn unit on. Press RESET to start the countdown timer.



7. To change out the water, remove an empty pan of water into a drain. Keep the pan liner inside the pan. Refill pan with water and return to the basin.



CAUTION- HOT

Unit, pans, and water will be hot.

8. Be aware of the water temperature. Help prevent bacteria growth. The FDA warns that bacteria grow most rapidly in the range of temperatures between 40°F – 140°F. (4°C – 60°C.)

WATER HEATING TIMES

(When unit is not pre-heated)

INITIAL WATER TEMP	TARGET TEMPERATURE	
	140°F	145°F
70°F	45 min.	50 min.
110°F	30 min.	40 min.
120°F	20 min.	30 min.
130°F	20 min.	25 min.

WATER HEATING TIMES

(In pre-heated unit)

INITIAL WATER TEMP.	TARGET TEMPERATURE	
	140°F	145°F
70°F	35 min.	40 min.
110°F	20 min.	25 min.
120°F	10 min.	15 min.
130°F	5 min.	10 min.

9. For units that have a countdown timer, press RESET to start the countdown cycle. Timer is factory preset for 4-hour cycles. When the timer ends, an alarm will beep and the display will indicate “END”. Press RESET to stop the alarm, change out the water and press RESET to restart the timer. See manual for instructionsfor on reprogramming timer.

WANT TO LEARN MORE?

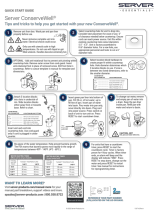
Visit server-products.com/manual-more for your manual, part breakdown, support videos, and more.
spsales@server-products.com | 800.558.8722



<https://qrco.de/ManualNMore>
© 2022 Server Products, Inc.



**REFERENCE YOUR PART NUMBER
(P/N) LOCATED ON THE LID OR BASE.**
100742Rev



[SERVER CW-DI ConserveWell Drop-In with Trimmer](#) [pdf] User Guide
CW-DI ConserveWell Drop-In with Trimmer, CW-DI, ConserveWell Drop-In with Trimmer

References

- [products.com](#)
- [Search our Website for Equipment Manuals & More](#)

Manuals+