



SERVER 101395 Power Distribution Unit User Guide

[Home](#) » [SERVER](#) » SERVER 101395 Power Distribution Unit User Guide 

SERVER 101395 Power Distribution Unit

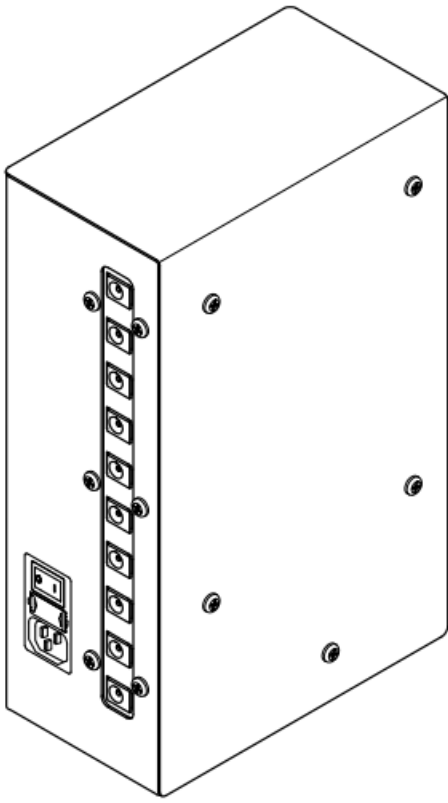


Contents

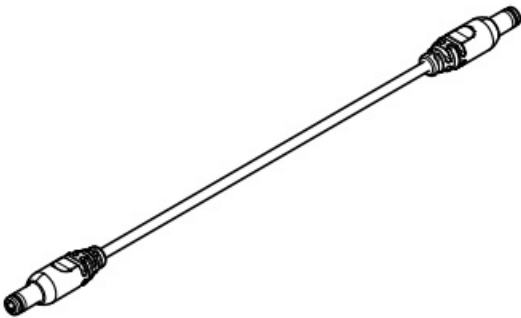
- [1 Parts](#)
- [2 ASSEMBLY INSTRUCTION](#)
- [3 Documents / Resources](#)
 - [3.1 References](#)
- [4 Related Posts](#)

Parts

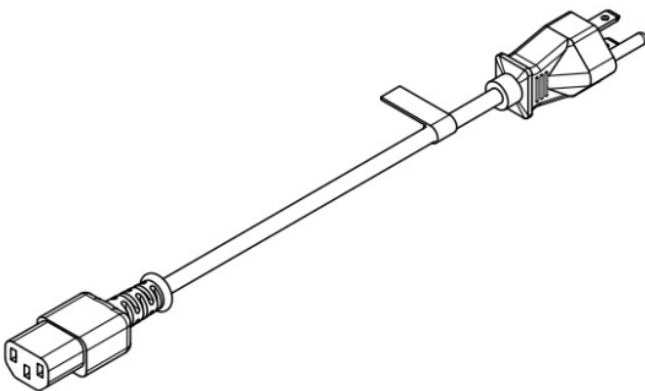
- 101395 Power Distribution Unit



- (20) 3' Cables



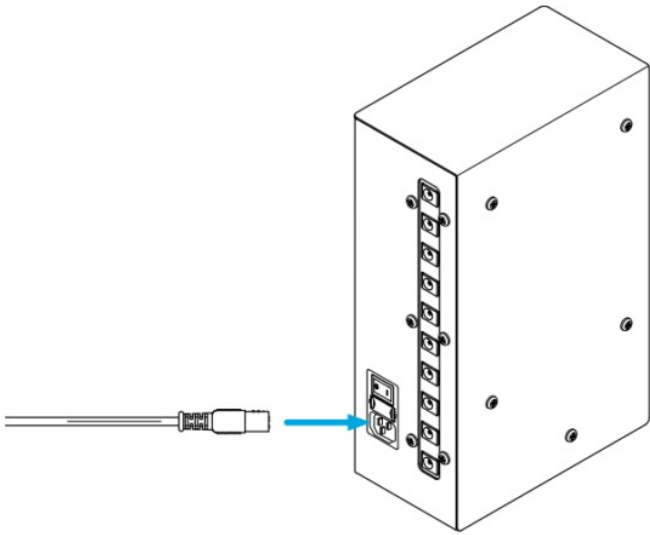
- 6' Power Cord



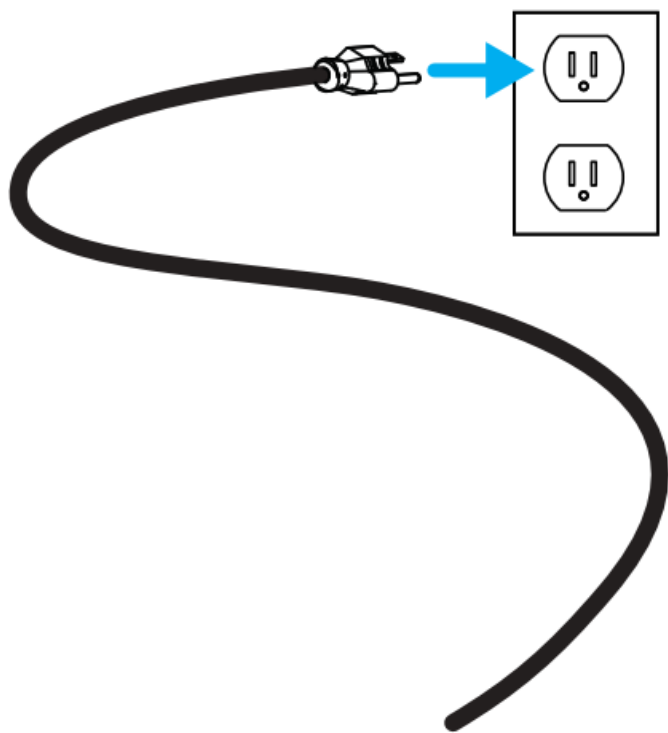
Unbox components.

ASSEMBLY INSTRUCTION

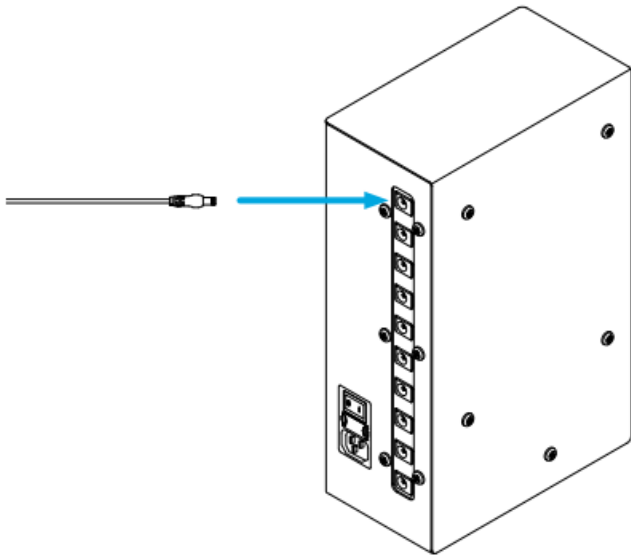
Plug one end of power cord into back of PDU.



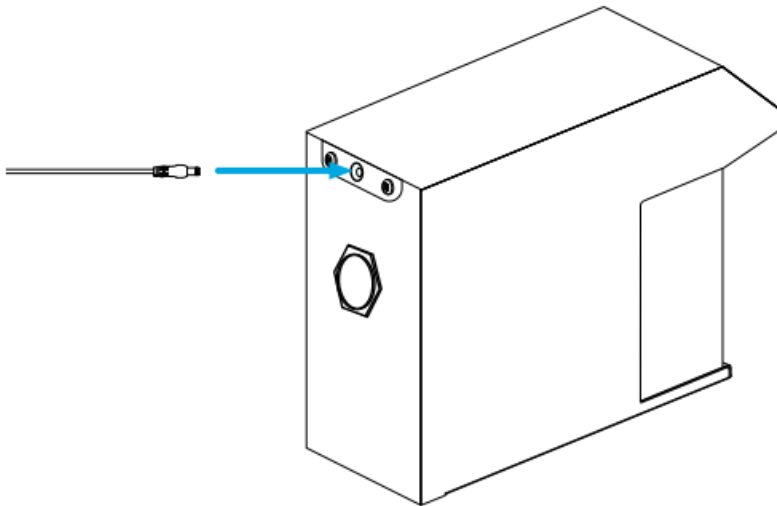
Plug other end of power cord into an outlet.



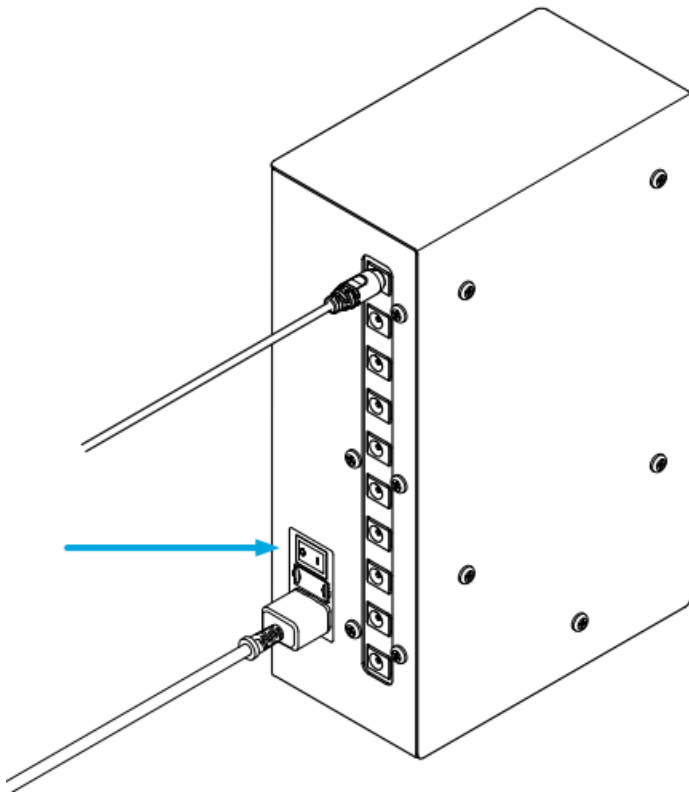
Plug one end of cable into an open spot on the PDU.



Plug other end of the cable into the back of a Sauce+ or Spin+ unit.



Turn the power switch on the back of the PDU to the on position. This will turn on all connected units. It may take several seconds for the units to turn on.

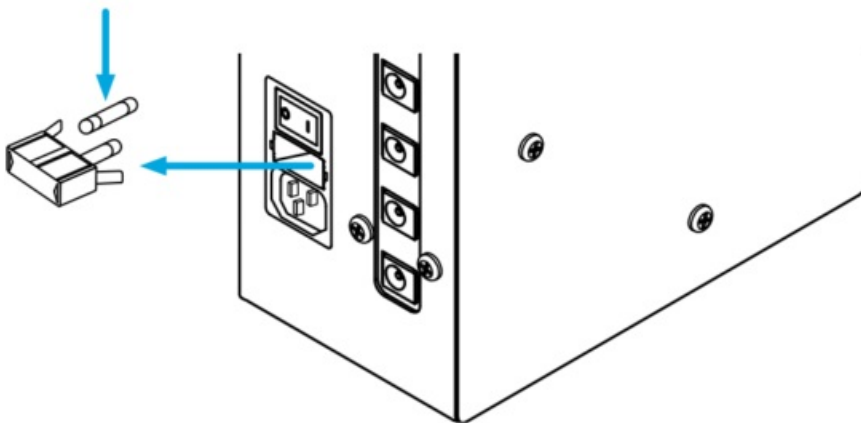


Up to 20 Sauce+™ or Spin+™ units can be plugged into a single PDU.

A PDU can handle up to 6 Sauce+ or Spin+ units dispensing or spinning at one time.

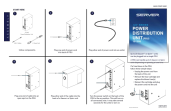
If a fuse blows in the PDU, follow these simple steps:

- Unplug the power cord from the back of the unit
- Remove the fuse cartridge and replace the blown fuse(s)
- Reinsert the cartridge and plug the power cord into the unit



©2024 Server Products, Inc

SERVER®



[SERVER 101395 Power Distribution Unit](#) [pdf] User Guide
101900, 101395, 101395 Power Distribution Unit, 101395, Power Distribution Unit, Distribution Unit

References

- [User Manual](#)

Manuals+, Privacy Policy

This website is an independent publication and is neither affiliated with nor endorsed by any of the trademark owners. The "Bluetooth®" word mark and logos are registered trademarks owned by Bluetooth SIG, Inc. The "Wi-Fi®" word mark and logos are registered trademarks owned by the Wi-Fi Alliance. Any use of these marks on this website does not imply any affiliation with or endorsement.