



## 100513 Fudge Server FS with Jar Instruction Manual

[Home](#) » [SERVER](#) » 100513 Fudge Server FS with Jar Instruction Manual 

### Contents

- [1 100513 Fudge Server FS with Jar](#)
- [2 Product Information: Fudge Server FS with Jar](#)
- [3 The product features](#)
- [4 Product Usage Instructions:](#)
- [5 ASSEMBLY](#)
- [6 Documents / Resources](#)
- [7 Related Posts](#)

# SERVER

100513 Fudge Server FS with Jar



**Product Information: Fudge Server FS with Jar**

The Fudge Server FS with Jar is a commercial-grade food warmer designed to keep fudge or other hot toppings at the ideal serving temperature. It comes with a variety of parts including a lid assembly, ladle, adapter, spacer, and a 94009 jar. The base-only version of the product is also available and can be used with the other parts to make a complete Fudge Server FS with Jar.

- Part Number: 100513
- Voltage: 120V

PART	QTY	DESCRIPTION
82023-000	1	BLACK KNOB
82509	1	LID ASSEMBLY
82561	1	LADLE
82507	1	ADAPTER
82063	1	SPACER

**The product features**

a 21 thermostat and a heating element that work together to maintain the ideal temperature for the fudge or other hot toppings. It also has a thermal assembly cut-out and a snap-in rocker switch for added safety. The temperature indicator plate and thermostat knob allow for easy temperature adjustments.

The Fudge Server FS with Jar also comes with four feet with screws (prior to 2023) or push-on feet (2023 and

after) for stability. The product is designed for commercial use and is made with high-quality materials to ensure

<b>82066</b>	<b>1</b>	<b>BASE ONLY FOR FS/FSP:</b>
<b>81278</b>	<b>1</b>	<b>WATER VESSEL ASSEMBLY</b>
<b>100003</b>	<b>1</b>	<b>21" THERMOSTAT</b>
<b>81297</b>	<b>1</b>	<b>HEATING ELEMENT</b>
<b>81037</b>	<b>1</b>	<b>THERMAL ASSEMBLY CUT-OUT</b>
<b>04544</b>	<b>1</b>	<b>SNAP-IN ROCKER SWITCH</b>
<b>81269</b>	<b>1</b>	<b>TEMPERATURE INDICATOR PLATE</b>
<b>81271</b>	<b>1</b>	<b>THERMOSTAT KNOB</b>
<b>11201</b>	<b>1</b>	<b>BUSHING, STRAIN RELIEF</b>
<b>11230</b>	<b>1</b>	<b>CORD ASSEMBLY</b>
<b>81058</b>	<b>4</b>	<b>FOOT WITH SCREW - BEFORE 2023</b>
<b>92098</b>	<b>4</b>	<b>PUSH-ON FOOT - AFTER 2023</b>

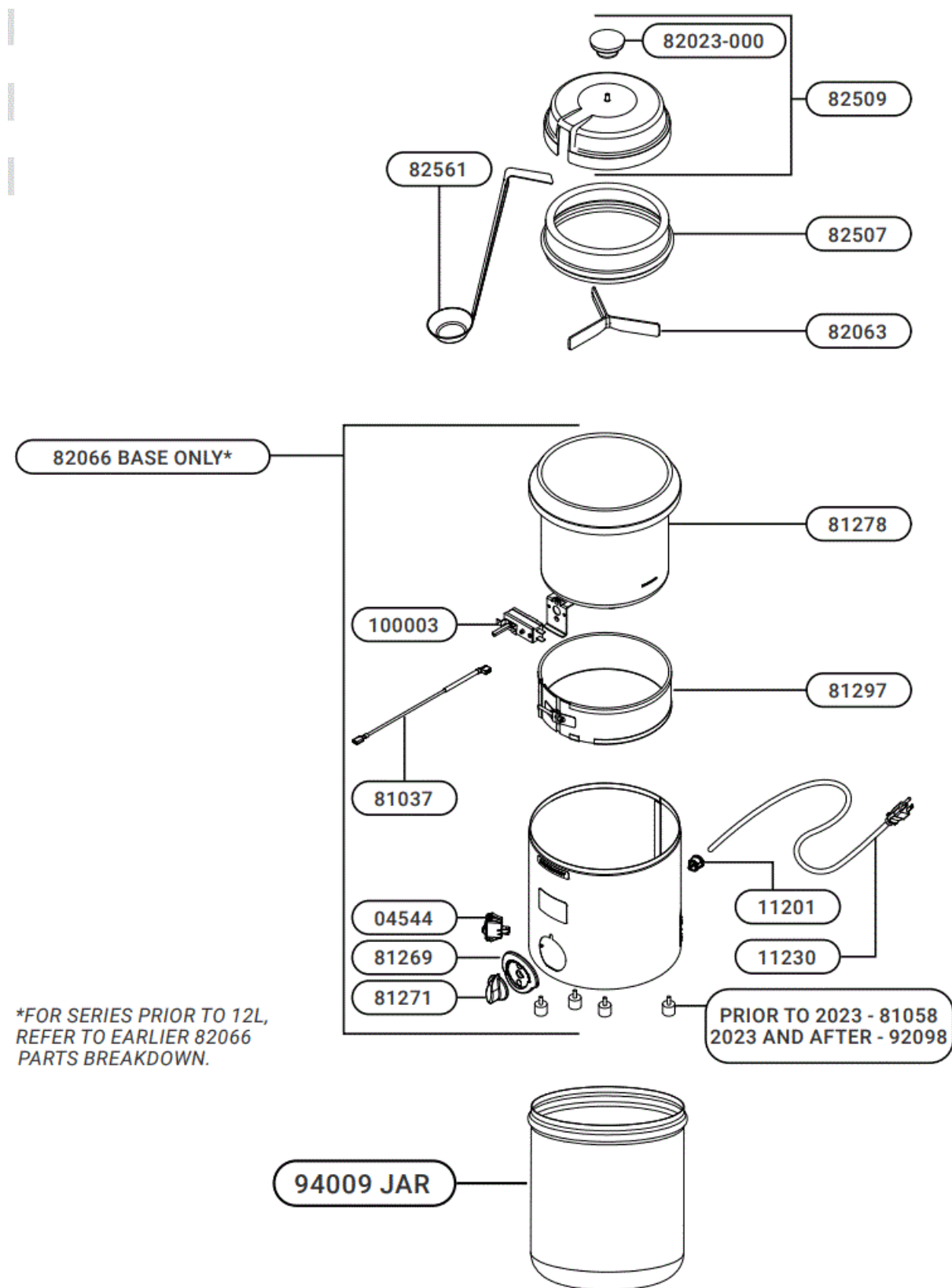
durability and longevity.

### **Product Usage Instructions:**

1. Assemble the Fudge Server FS with Jar by attaching the lid assembly, ladle, adapter, spacer, and jar to the base-only unit.
2. Place the Fudge Server FS with Jar on a flat surface and plug it into a 120V outlet.
3. Turn on the product using the snap-in rocker switch.
4. Adjust the temperature using the thermostat knob and monitor the temperature using the temperature indicator plate.
5. Add fudge or other hot toppings to the jar using the ladle.
6. When not in use, turn off the product and unplug it from the outlet.
7. Clean the Fudge Server FS with Jar according to the instructions provided in the user manual.

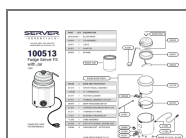
It is important to follow the usage instructions carefully to ensure safe and effective operation of the Fudge Server FS with Jar. If you have any questions or concerns, please contact our customer service team at 262.628.5600 or 800.558.8722, or email us at [spsales@server-products.com](mailto:spsales@server-products.com)

### **ASSEMBLY**



\*FOR SERIES PRIOR TO 12L,  
REFER TO EARLIER 82066  
PARTS BREAKDOWN.

## Documents / Resources



[SERVER 100513 Fudge Server FS with Jar](#) [pdf] Instruction Manual

100513 Fudge Server FS with Jar, 100513, Fudge Server FS with Jar, Jar, Fudge Server FS, Server FS, FS

