

07794 Server Express Pump



# 07794 Server Express Pump Instruction Manual

[Home](#) » [SERVER](#) » 07794 Server Express Pump Instruction Manual 

## Contents

- 1 07794 Server Express Pump
- 2 ASSEMBLY
- 3 SAFETY
- 4 DISASSEMBLY
- 5 CLEANING
- 6 PARTS
- 7 TROUBLESHOOTING
- 8 LIMITED WARRANTY
- 9 CONTACT
- 10 Documents / Resources
  - 10.1 References



S E R V E R

**07794 Server Express Pump**

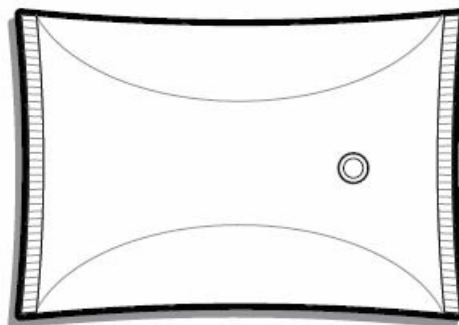


## Thank You

Thank You ...for purchasing our Server Express™ Pump. Express™ pouched condiment systems are sealed and sanitary, achieve excellent evacuation and have only a few parts for easy clean-up.

## SIMPLIFY CONDIMENT MANAGEMENT— GO POUCHED

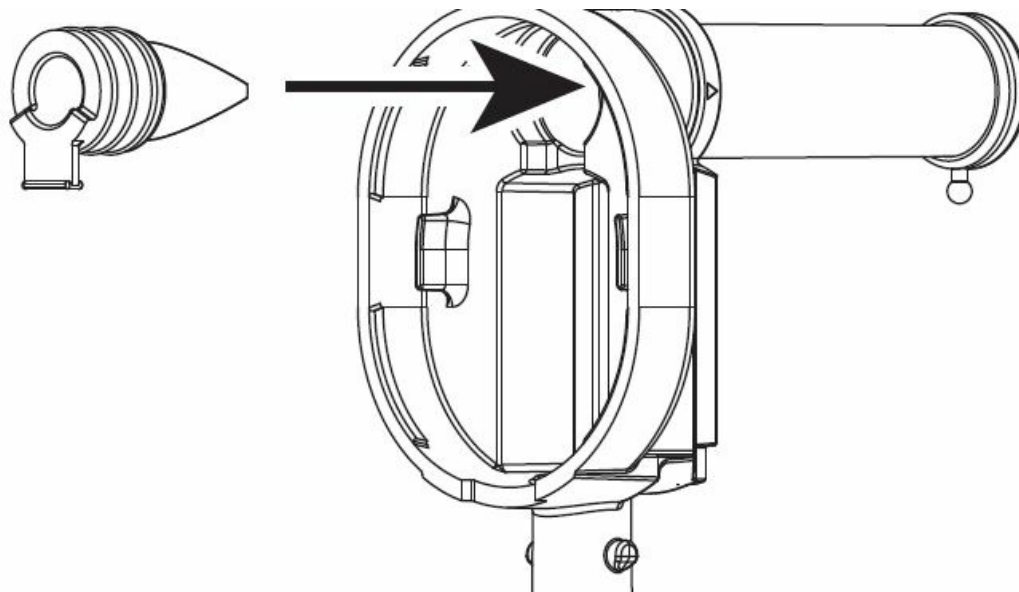
- Used with pouches up to 1½ gallons with 16mm fitments.



## ASSEMBLY

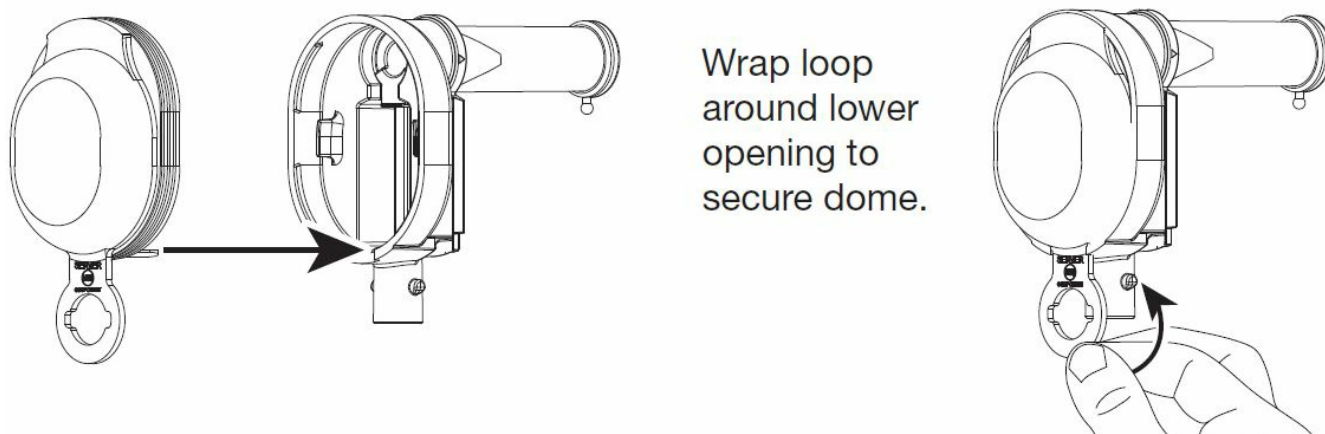
## WASH ALL PARTS PROPERLY BEFORE USE

### 1. INSERT PINCH VALVE



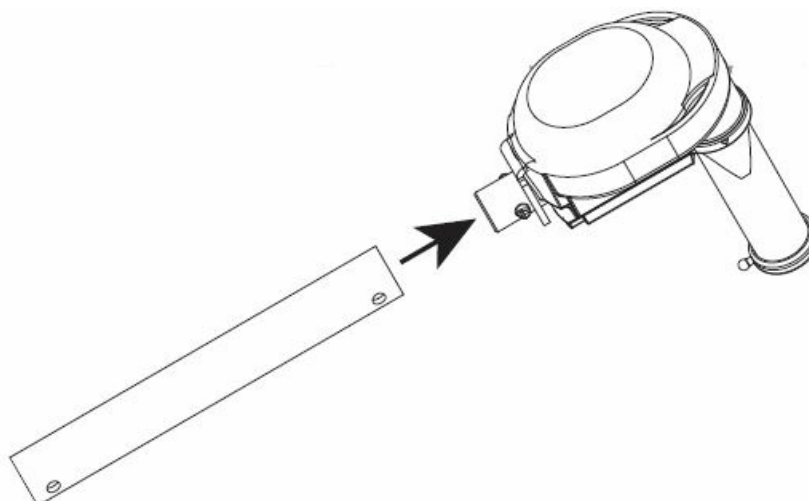
- into pump housing.
- **TIP:** Squeeze the pinch valve open before installation to ensure it isn't stuck shut.

### 2. INSTALL DOME



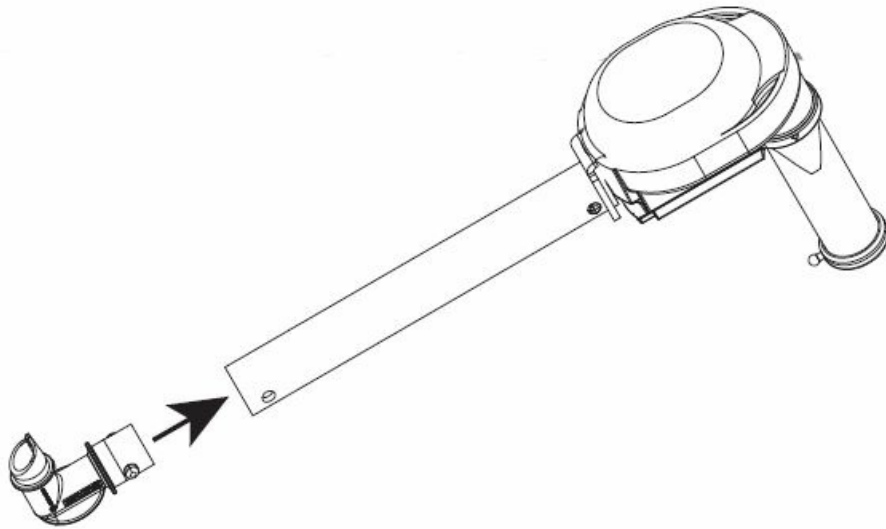
- Press dome into housing fully.
- Ensure valve flap covers bottom opening.

### 3. INSTALL TUBE



- Lubricate with a small amount of clean water.
- Rotate and position until both pegs on housing fit into holes on tube.

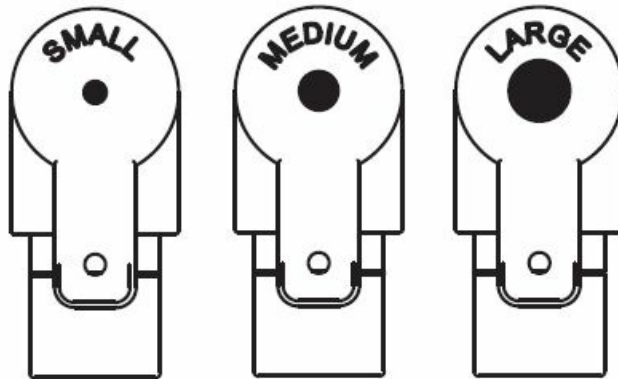
### 4. INSERT CONNECTOR



- Lubricate with a small amount of clean water.
- Rotate and position until both pegs on connector fit into holes on tube.
- Connector must point away from end of discharge tube.

#### 5. SELECT DISCHARGE FITTING

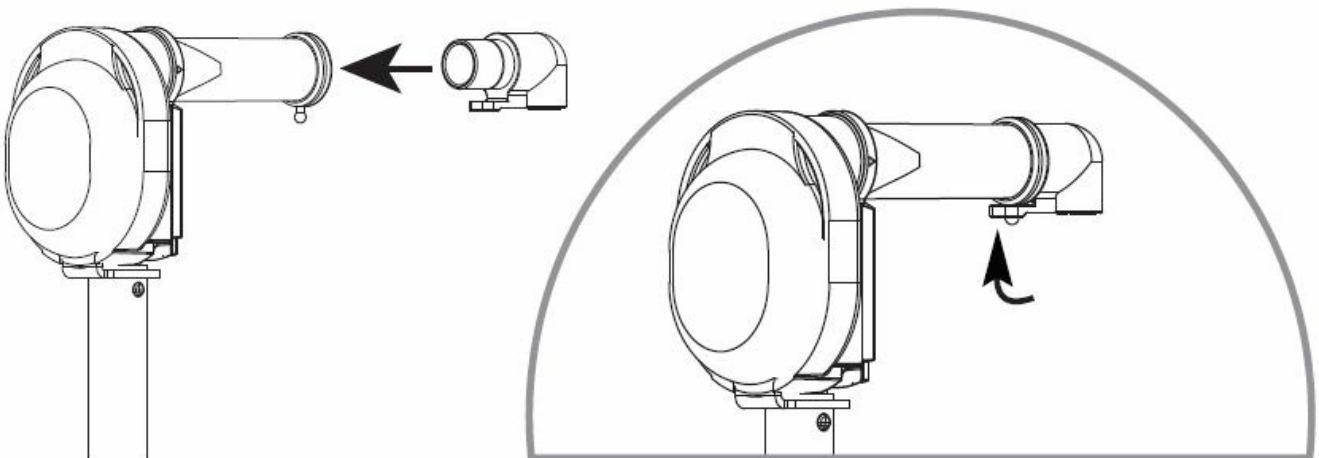
- Fittings are marked small, medium or large on bottom.



#### • CONSISTENCY OF WHAT YOU DISPENSE / SUGGESTED FITTING SIZE

- **THIN (hot sauce)** .....SMALL
- **THICK (ketchup or mustard)** .....MEDIUM
- **PARTICULATES (relish or tartar sauce)** .....LARGE

#### 6. INSERT DISCHARGE FITTING



- Into pump housing discharge tube.
- Place loop of fitting around peg on end of discharge tube to secure.

## SAFETY

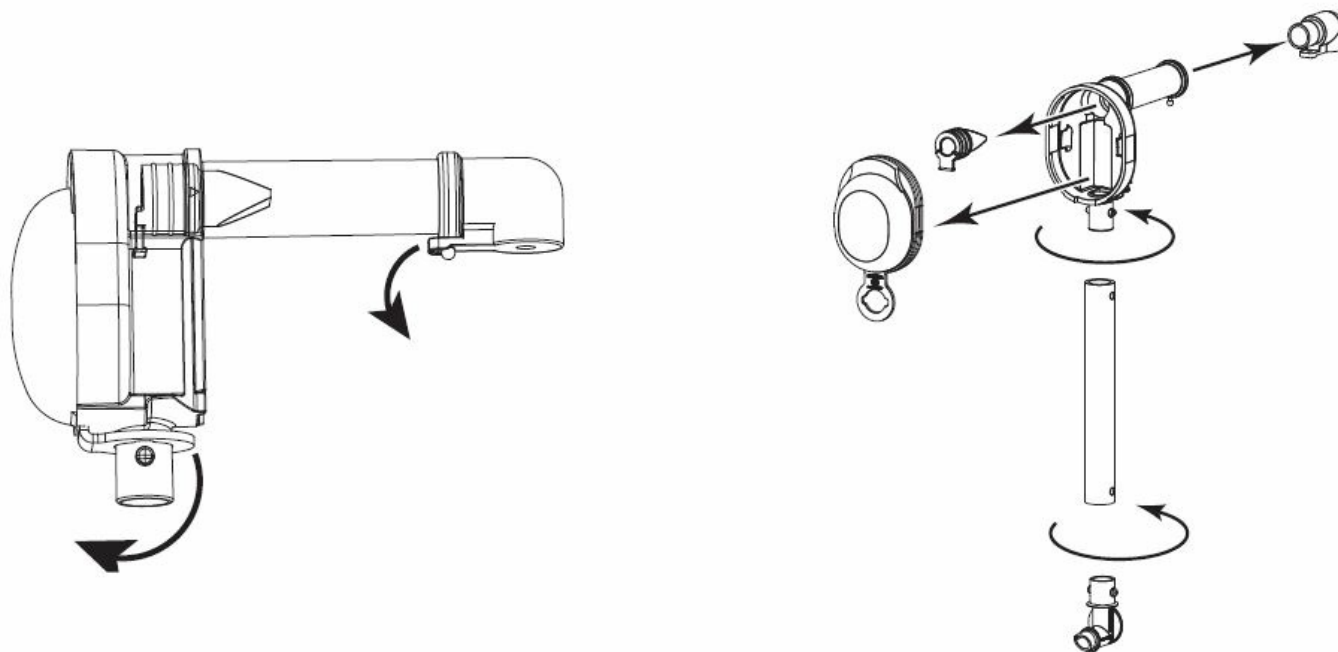
According to food and safety regulations, most foods must be stored and/or served at certain temperatures or they could become hazardous. Check with local food and safety regulators for specific guidelines. Server Products, Inc. cannot be responsible for the serving of potentially hazardous product.

**IMPORTANT:** Clean, rinse, sanitize, and dry parts daily or regularly to comply with local sanitization requirements.



NSF International (National Sanitation Foundation) lists this pump as: "Not acceptable for dispensing potentially hazardous foods."

## DISASSEMBLY



## CLEANING

### 1. FLUSH & RINSE

- All pump surfaces with hot water.
- Place lower end of pump into container of hot water and operate pump until all remaining product is expelled and only hot water is discharged.

### 2. DISASSEMBLE & CLEAN

- All washable parts with soap and hot water.
- Use brush to clean any confined areas.

### 3. RINSE

- Fully with clear water.

### 4. SANITIZE

- All parts according to local sanitization requirements. All parts in contact with food must be sanitized.

### 5. AIR DRY

- All parts fully.

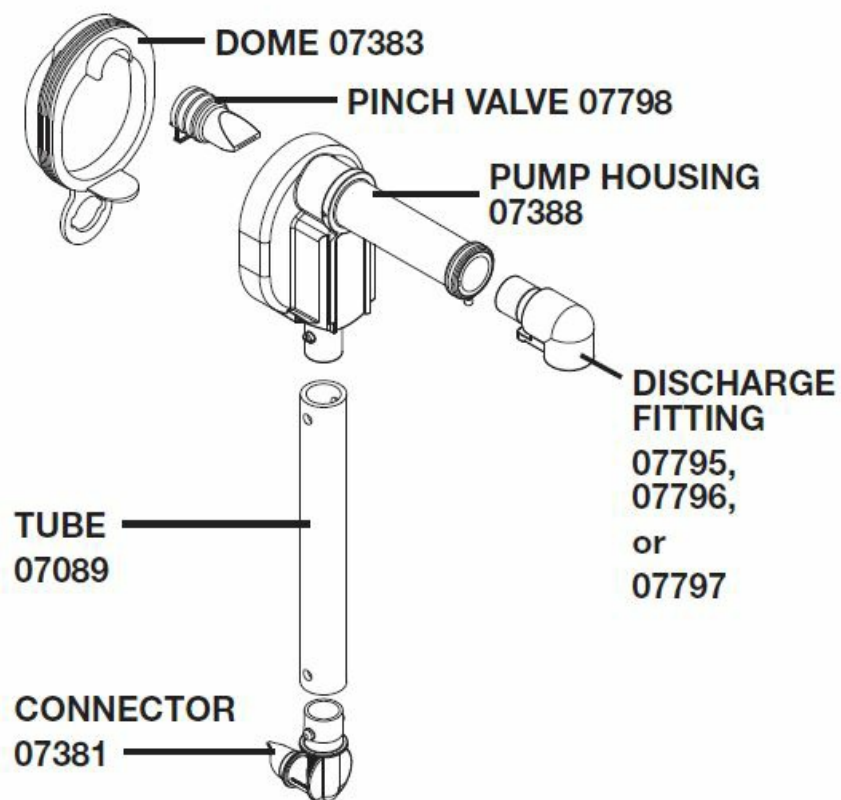
**YES!**



Use dishwashing soap, hot water and nylon brush

- Dishwasher safe
- Do not use abrasive, caustic or ammonia based cleansers.
- Do not use cleansing agents with high concentrations of acid, alkaline or chlorine.
- Do not use metal scrapers or cleaning pads that could scratch surfaces.

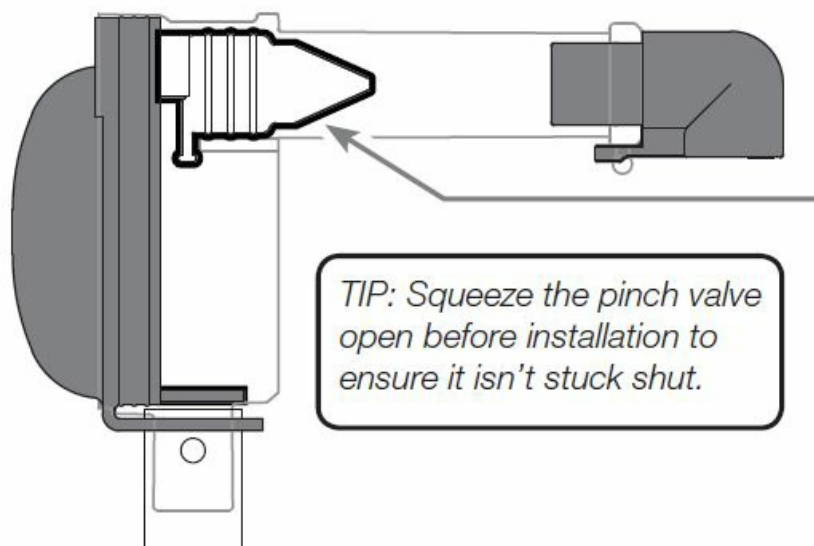
## PARTS



**MODEL:** 07794

PART	QTY	DESCRIPTION
07383	1	PUMP DOME, BLACK
07798	1	LARGE PINCH VALVE
07388	1	PUMP HOUSING
07089	1	7" TUBE
07381	1	CONNECTOR, 16MM
07795	1	DISCHARGE FITTING, .156, SM.
07796	1	DISCHARGE FITTING, .256, MED.
07797	1	DISCHARGE FITTING, .394, LG.

## TROUBLESHOOTING



- DIFFICULT TO ATTACH PARTS?
  - Wet parts with clean water to help fit.
- PRODUCT DOESN'T PUMP?
  - Ensure pinch valve is inserted in housing.
  - Ensure connector is snapped fully in place to fitment in pouch.
  - Ensure pump is properly installed in unit.
  - Clean pump thoroughly.
- DOME POPS OFF?
  - Clean thoroughly. Food residue could prevent a tight seal between dome and housing.
  - Ensure dome edges are flush with housing.

## LIMITED WARRANTY

### SERVER PRODUCTS LIMITED WARRANTY

### 2 YEAR WARRANTY



- Server Products equipment is backed by a two-year limited warranty against defects in materials and workmanship.
- For complete warranty information go to: [www.Server-Products.com](http://www.Server-Products.com)

## GENERAL SERVICE, REPAIR OR RETURNS

Before sending any item to Server Products for service, repair, or return, contact Server Products customer service to request a Return Authorization Number. Merchandise must be sent to Server Products with this number. Service is extremely prompt. Typically, units are repaired and ship out within 48 hours of receipt. Merchandise being returned for credit must be in new and unused condition and not more than 90 days old and will be subject to a 20% restocking charge.

## CONTACT

### HELP or ORDERING REPLACEMENT PARTS

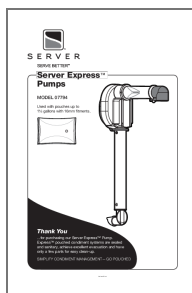
#### Server Products Inc.

- 3601 Pleasant Hill Road
- Richfield, WI 53076 USA
- 262.628.5600
- 800.558.8722
- [SPSALES@SERVER-PRODUCTS.COM](mailto:SPSALES@SERVER-PRODUCTS.COM)

Please be prepared with the Part Numbers for your items. Individual part numbers are listed above.

---

## Documents / Resources



[SERVER 07794 Server Express Pump \[pdf\] Instruction Manual](#)  
07794 Server Express Pump, 07794, Server Express Pump, Express Pump, Pump

## References



- [User Manual](#)

[Manuals+](#), [Privacy Policy](#)

This website is an independent publication and is neither affiliated with nor endorsed by any of the trademark owners. The "Bluetooth®" word mark and logos are registered trademarks owned by Bluetooth SIG, Inc. The "Wi-Fi®" word mark and logos are registered trademarks owned by the Wi-Fi Alliance. Any use of these marks on this website does not imply any affiliation with or endorsement.