



SereneLife IPCAMHD30 Wireless IP Camera User Guide

[Home](#) » [serenelife](#) » SereneLife IPCAMHD30 Wireless IP Camera User Guide 

Contents

- 1 SereneLife IPCAMHD30 Wireless IP Camera
- 2 Safety Instruction
- 3 Install “MIPC” APP
- 4 Register an Account
- 5 Add Camera
- 6 Select Network Connection
- 7 Troubleshooting FAQ
- 8 FAQs



SereneLife IPCAMHD30 Wireless IP Camera



Prompt: Our APP will be in continuously update for better users experience. The actual operation interface may not accordance with this manual, please operate according to APP.

Safety Instruction

These instructions are intended to ensure that user can use the product correctly to avoid danger or property loss.

Warnings

1. Proper configuration of all passwords and other security settings is the responsibility of the installer and end user.
2. In the use of the product, you must be in strict compliance with the electrical safety regulations of the nation and region. Please refer to technical specifications for detailed information.
3. Input voltage should meet both the SELV (Safety Extra Low Voltage) and the Limited Power Source with 100 to 240 VAC or 5 VDC according to the IEC60950-1 standard. Please refer to technical specifications for detailed information.
4. Do not connect several devices to one power adapter as adapter overload may cause overheating or a fire hazard.
5. Please make sure that the plug is firmly connected to the power socket.
6. If smoke, odor or noise rise from the device, turn off the power at once and unplug the power cable, and then please contact the service center.

Install “MIPC” APP

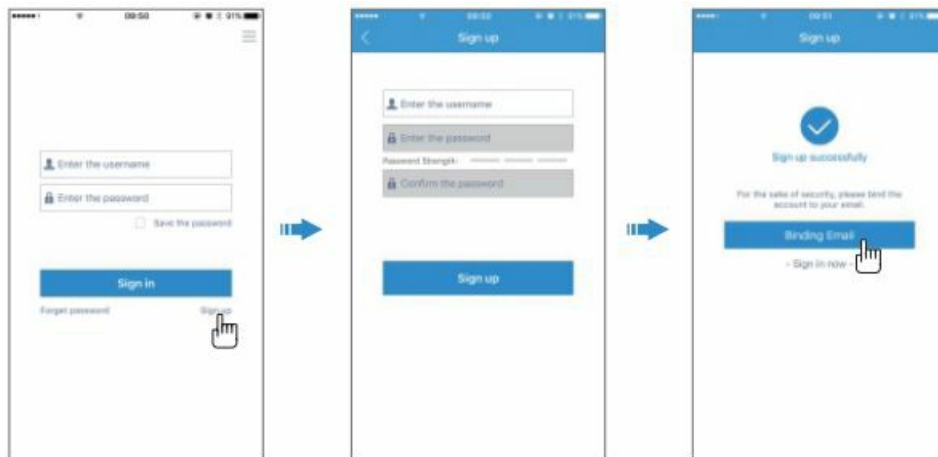
Method I: Download APP in: www.mipcm.com/download; Method II: Scan to Download:



Method III: Download “MIPC” APP from APP Store (iOS) or Play Store (Android).

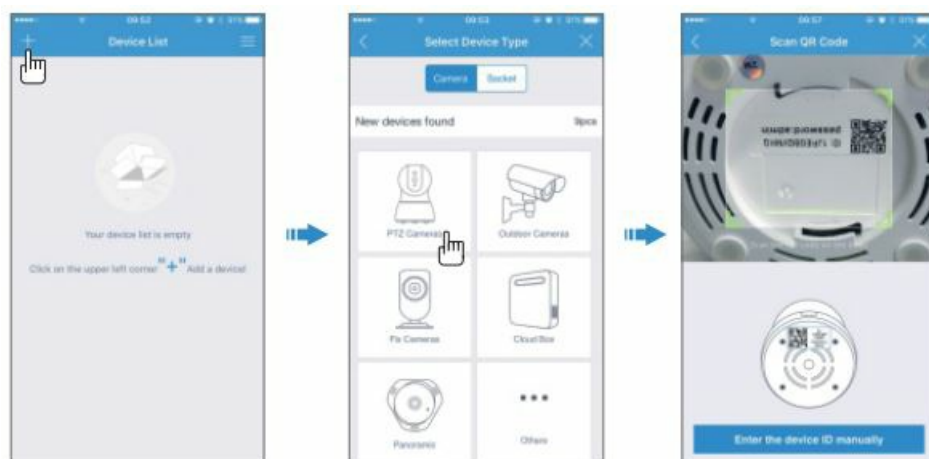
Register an Account

Open “MIPC” APP, click “register” button, register & log in as instructed (For your account safety & retrieve password, we suggest you to bind with email before log in).



Add Camera

Click on “+” in top left corner, choose “PTZ cameras” (FIX/Cloud box/ Panoramic), scan the QR code on bottom of the camera, and tap the “Add” button to enter the network connection interface.



Select Network Connection

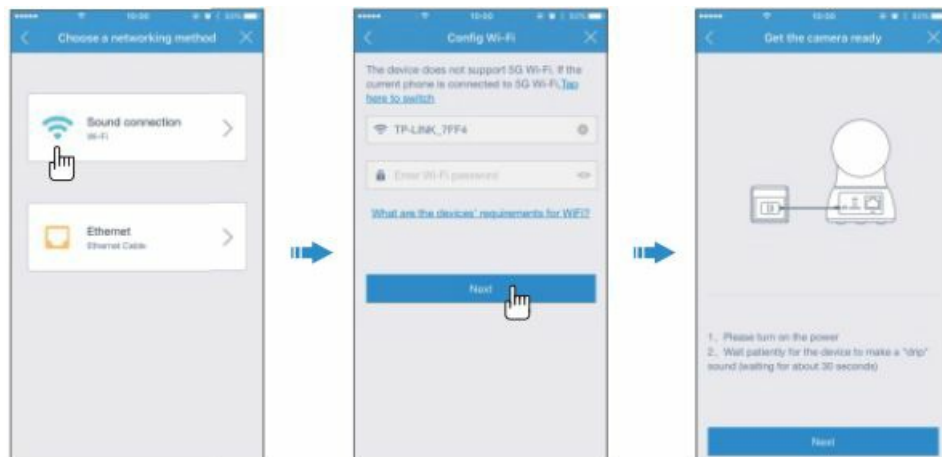
You could choose either “Sound connection” or “Ethernet connection” to connect the camera.

Note:

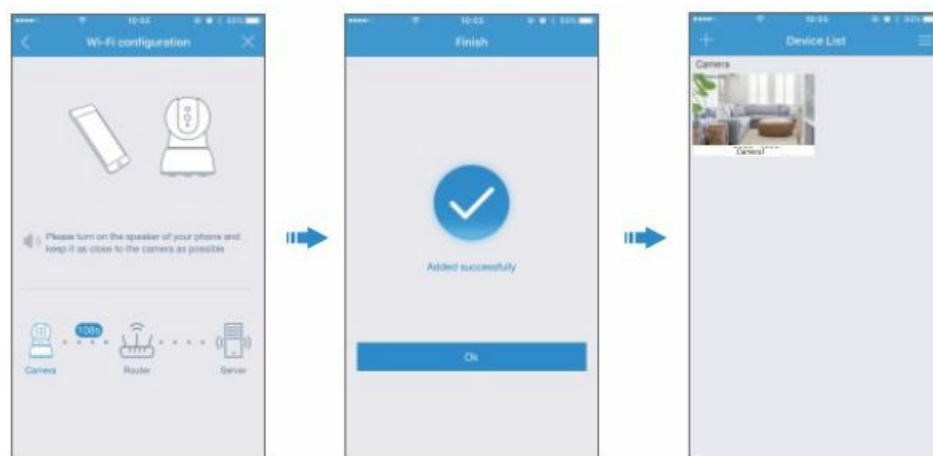
1. Press RESET for 1 second to enter Wi-Fi configuration; press for 10 seconds or longer to restore to factory settings (when you hear a chime, then setting successfully).
2. Try “Ethernet connection” if “Sound connection” unsuccessful.

Option 1 : Sound connection

- a. Click the “Sound connection” icon, setting up Wi-Fi for camera (only support 2.4GHZ), input the Wi-Fi password;
- b. Power on the device (30-60 seconds after you connect the power, you will hear the chime and the IR light will turn off, now camera is powered on);

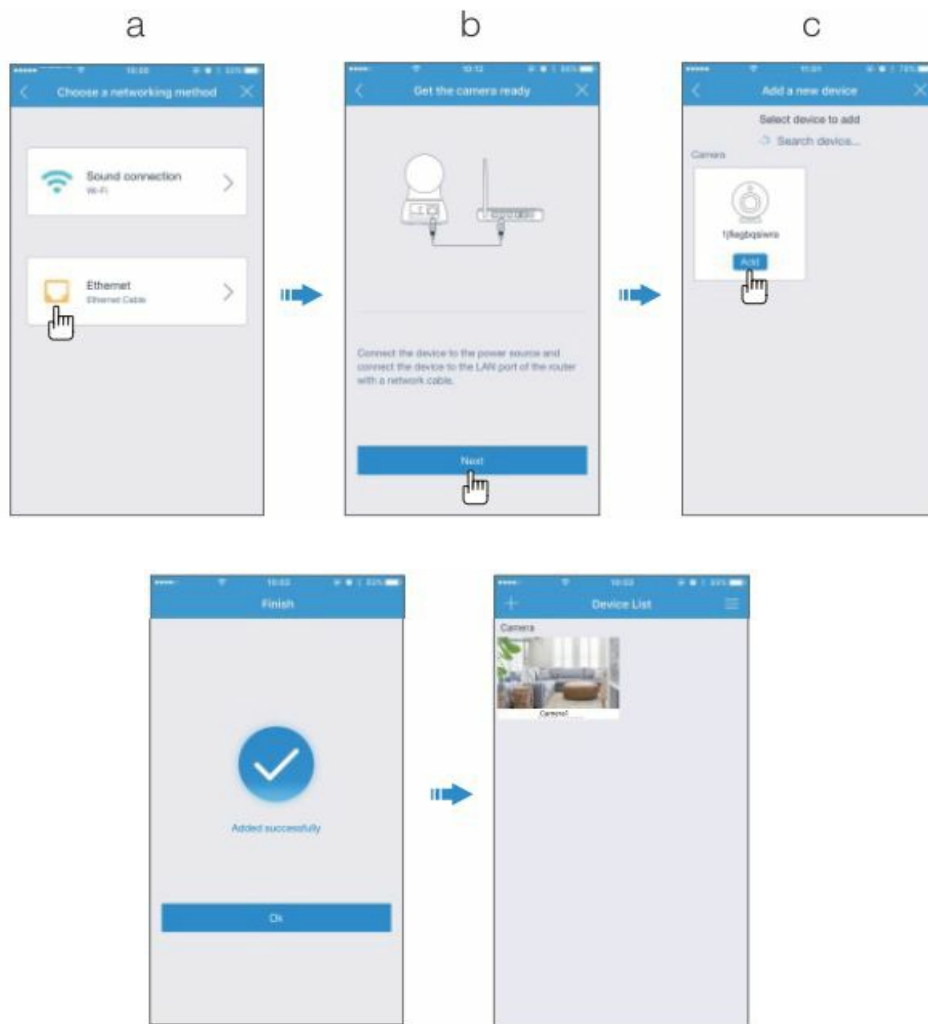


- c. Click the “Already heard the voice hint” if you hear the chime, and wait until successfully connected.
 - If no chime heard, please press the RESET button for 1 second, you will hear the voice prompt say “Waiting for receiving the wireless configuration”, click “Already heard the voice hint”. and wait until successfully connected.



Option 2: Ethernet connection

- a. Click the “Ethernet connection” icon;
- b. Power on the device, connect the camera to router with Ethernet cable (camera will be powered on in 30-60 seconds);
- c. Add the matched device until set up successfully.



Troubleshooting FAQ

- What if the camera cannot conned to Wi-Fi?
 - Check if your Wi-Fi password contains special characters such as spaces, commas, periods, etc, which may not be recognized by the camera.
 - The camera is only available to 2.4GHz Wi-Fi, not 5GHz Wi-Fi. Please check and see your Wi-Fi frequency band of the router.
 - Keep your mobile phone as close to the camera as possible, and keep your camera as close to the router as possible.
 - Poor Wi-Fi signal may result in failure to connect to your camera. You can use a Wi-Fi Range Extender which will extend the Wi-Fi signal and wireless coverage of existing wireless networks.
 - If you have an Ethernet cable at home, please try to set up the camera with it, then follow the directions on the APP to change into a Wi-Fi network.
 - If you fail to connect the camera, please follow these steps and try again:
 - Remove power cord. Then, re-plug it in.
 - Press and hold the RESET button for over 10 seconds to restore the camera to factory settings when you hear the voice prompt and the IR light turns on.
 - Set up the camera once more when you hear the voice prompt.
- **APP can't receive the alarm notification?**
 - The camera has motion detection and alarm function, but it needs manual setup. Steps: Enter the camera "settings" select "Notifications" enable the motion detection feature and save the settings.

- **What if I forget my account & password?**

- You can find your account & password with the binding email, it will not be found if not binding with email.

- **How can I see the recorded video?**

- For your privacy and security, video files are encrypted, it must be playback through mobile phone APP or computer APP, and it cannot be played directly on the computer, you need to export the video through SDtool, a special video export tool.

The SDtool can be downloaded from www.mipcm.com.

- **How does the camera restore to factory settings?**

- Press and hold the RESET button for 10 seconds, you will hear the voice prompt “Restore the factory settings successfully”? now camera starting to restore, it will finish about 60 seconds, then you will hear a chime (Do not power off during restore procedures).

Quick Installation Guide

- **Site:** www.mipcm.com



Questions? Comments?

We are here to help!

- **Phone:** (1) 718-535-1800
- **Email:** support@pyleusa.com

FAQs

What are the recommended uses for this camera?

The SereneLife IPCAMHD30 is primarily recommended for surveillance purposes.

Does the camera support Night Vision?

Yes, the camera comes equipped with an Automatic Night Vision IR feature that allows for a live feed in the dark up to 50 feet.

What is the video quality?

The camera supports high-definition 2MP 1080p video with adjustable image configurations.

How can I monitor the video feed?

You can monitor the video feed both on your mobile device and desktop. It uses the “MIPC” app for P2P streaming.

Does it have audio features?

Yes, it supports two-way audio. This is especially useful if you're using the camera as a baby or pet monitor.

How does the motion sensor work?

You can set up personal motion detection that will activate net streaming and send you an alert via push notification or email.

How do I connect the camera to the Internet?

The camera supports easy DIY wireless connections. Wire it to power, then connect to the cloud via WiFi.

Can I mount it on a wall or ceiling?

Yes, the product includes an external mount, making it suitable for wall or ceiling installations.

What is the item weight and product dimensions?

The item weighs 9.4 ounces and has product dimensions of 3.35 x 3.35 x 4.73 inches.

Is there a warranty?

Manufacturer's warranty can be requested from customer service.

Is this camera suitable for outdoor use?

The camera is encased in heavy-duty protective aluminum housing and includes a sun hood shade to reduce glare. However, the product description primarily recommends it for indoor use.

Does it work with 5GHz WiFi?

The camera is compatible with 2.4G WiFi (IEEE802.11b/g/n) and does not support 5GHz WiFi.

Download This PDF Link: [SereneLife IPCAMHD30 Wireless IP Camera User Guide](#)