



Sercel S-Lynks Gateway User Manual

[Home](#) » [Sercel](#) » Sercel S-Lynks Gateway User Manual 



Contents

- [1 Sercel S-Lynks Gateway User Manual](#)
- [2 Guidelines for Safe and Efficient Use](#)
- [3 Description](#)
- [4 Description of radio protocol](#)
- [5 Deployment](#)
- [6 Maintenance](#)
- [7 Specifications](#)
- [8 Regulatory Information](#)
- [9 Documents / Resources](#)
 - [9.1 References](#)

Sercel S-Lynks Gateway User Manual



To Contact Sercel

Europe

Nantes, France

Sales; Customer Support; Manufacturing & Repair

B.P. 30439, 16 rue de Bel Air 44474 Carquefou Cedex

Tel: +33 2 40 30 11 81

Hot-Line: Land:+33 2 40 30 58 88

Marine:+33 2 40 30 59 59

Navigation: +33 2 40 30 69 87

E-mail: sales.nantes@sercel.com customersupport.land@sercel.com

customersupport.marine@sercel.com

customersupport.navigation@sercel.com repair.france@sercel.com

streamer.repair@sercel.com

St Gaudens, France

Vibrator & VSP Customer Support; Vibrator Manufacturing & Repair Streamer Manufacturing & Repair

Tel: +33 5 61 89 90 00, **Fax:** +33 5 61 89 90 33

Hot Line:(Vib) +33 5 61 89 90 91

(VSP) +33 5 61 89 91 00

Brest, France

Sales; Customer Support

Tel: +33 2 98 05 29 05; **Fax:** +33 2 98 05 52 41

E-mail: sales.nantes@sercel.com

Toulouse, France

Sales; Customer Support

Tel: +33 5 61 34 80 74; **Fax:** +33 5 61 34 80 66

E-mail: support@metrolog.com sales.@metrolog.com info@metrolog.com

Russia

Moscow, Russia
Customer Support
Tel: +7 495 644 08 05, Fax: +7 495 644 08 04
E-mail: repair.cis@geo-mail.org support.cis@geo-mail.org
Surgut, Russia Customer Support; Repair Tel: +7 3462 28 92 50

North America

Houston, Texas, USA

Sales; Customer Support; Manufacturing & Repair
Tel: +1 281 492 6688,
Hot-Line: Contact Sercel Nantes Hotline
E-mail: sales.houston@sercel.com
HOU_Customer.Support@sercel.com HOU_Training@sercel.com
HOU_Customer.Repair@sercel.com

Tulsa, Oklahoma, USA

Tel: +1 918 834 9600, **Fax:** +1 918 838 8846
E-mail: support@sercel-grc.com sales@sercel-grc.com

Middle East

Dubai, U. A. E.

Sales; Customer Support; Repair
Tel: +971 4 8832142, **Fax:** +971 4 8832143
Hot Line: +971 50 6451752
E-mail: dubai@sercel.com repair.dubai@sercel.com

Far East

Beijing, P. R. of China

Research & Development Tel: +86 106 43 76 710,
E-mail: support.china@geo-mail.com repair.china@geo-mail.com
E-mail: customersupport.vib@sercel.com customersupport.vsp@sercel.com

Xushui, P. R. of China

Manufacturing & Repair
Tel: +86 312 8648355, **Fax:** +86 312 8648441

Singapore

Streamer Manufacturing; Repair; Customer Support
Tel: +65 6 417 7000, **Fax:** +65 6 545 1418




Guidelines for Safe and Efficient Use

Read this information before using your S-Lynks Gateway and S-Lynks Nodes.

Warnings, Cautions, and Important notices throughout this manual guide you to avoid injury, prevent equipment

damage, and determine equipment use when varying components or configurations exist. Notes provide tips or additional information.

SERCEL is not responsible for damages or injuries that result from failure to observe the information provided.

 WARNING	When a Warning or Caution appears with a lightning-bolt icon, as shown in this example, this is to indicate a potential hazard that may lead to bodily injury or even death.
 CAUTION	When a Warning or Caution appears with an exclamation-point icon, as shown in this example, this is to indicate possible equipment damage or potential risk of misuse and incorrect operation.
 IMPORTANT	Important notices appear in the manual to highlight information that does not affect the risk of bodily injury, death, or equipment damage, but is nevertheless important. These notices appear with a stop-sign icon, as shown in this example.

Description

S-lynks is a complete solution for continuous infrastructure monitoring. It analyzes the behavior of the structure and detects anomalies which makes it a great tool to meet the growing requirements for predictive maintenance programs.

This fully integrated system can be installed permanently on the structure and the data collected is immediately transmitted to a secure software platform.

The S-lynks solution is intended to conduct an audit or monitor the state of health of a structure.

The wireless acquisition and transmission of data and their frequency can be configured using a field terminal and a Powerstick or via the online service platform (for a permanent monitoring). The Nodes are powered by Sercel battery pack that can be replaced.

S-lynks Gateway



The S-lynks Gateways collect the data transmitted by the Nodes positioned on a structure.

The Gateway is installed at the location where its data collection is the most optimal in order to maximize energy

performance. The data collected is sent over the field terminal (for an audit) or over the online service platform (for a permanent monitoring). The Gateway is powered by an external power supply and has an internal backup battery in case of temporary failure of the external power supply.

Functions:

- Interact with nodes (PN 10046233)
- Dual mode operation: Audit or Monitoring
- Using GNSS reception, it ensures synchronization through radio transmission to nodes.
- Transmit radio order and parameters to nodes
- Wirelessly retrieves data from Nodes (raw acquisition data, status and QC)
- Transmits processed data and raw data (if applicable) to the Cloud
- Transmits status and QC to the Cloud
- Request order from Cloud
- Allows data acquisition to be retrieved manually on a compatible terminal via Wi-Fi or Ethernet (see compatible terminal section)
- Provide batteries status with battery pack compatible (including Gauge)

External connections:

Whip Wi-Fi 2.4Ghz antenna SMA type (PN 10050547 included x1)

Whip LoRa 868Mhz antenna SMA type (PN 10050546 included x1)



External power supply Cable M12 type (PN 10050546 included x1)

External Antenna Kit (PN 10051757 not included x1)

- GPS N type with up to 50m cable & surge protection
- LTE- M N type with up to 50m cable & surge protection

Temperature sensor M12 type (included x1)

Factory Ethernet cable M12 type (not included x1)



S-lynks-Nodes

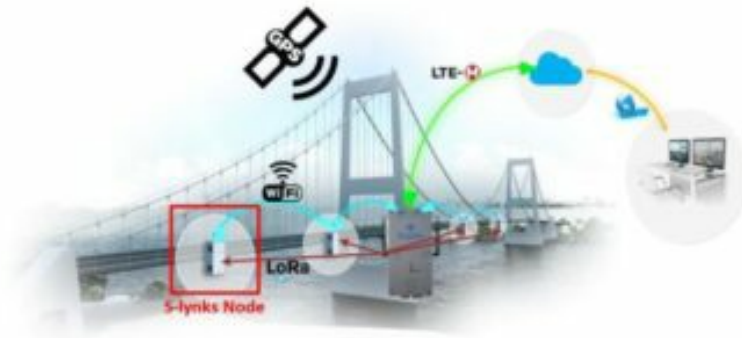
The S-lynks Nodes contain the QuietSeis® technology in order to acquire accelerometry data once positioned on a structure. The Nodes are installed directly on the structure to be monitored. The X, Y and Z axes are visible on the front face of the case in order to represent the orientation of a Node in space. The wireless acquisition and transmission of data and their frequency can be configured using a field terminal and a Powerstick (for an audit) or via the online service platform (for a permanent monitoring). The Nodes are powered by a battery pack that can be replaced.



Functions:

- Interact with Gateway (PN 10046316)
- Dual mode operation: Audit or Monitoring
- Acquisition of 3-component ambient vibration time data (raw data).
Sampling
rate: 4ms
Duration:
20mn (Monitoring mode) or selectable up to 1hour (Audit)
- Wirelessly transmit data (raw acquisition data, status and QC) to Gateway
- Allows manually data to be retrieved wirelessly on compatible terminal
- Provides batteries status with battery pack compatible (including Gauge)

Description of radio protocol



GNSS	Time synchronization Gateway
WiFi network	Data retrieve / Command transmission
LoRa	Wake up Nodes / Synchronization Nodes
LTE	Data transmission to the Cloud

S-lynks Gateway

Operation states (Mode Audit or Monitoring)	WiFi	LoRa (Tx)	LTE	GNSS
Gateway communicating with Cloud	ON	OFF	ON	ON
Gateway non -communicating with Cloud	ON	ON	OFF	ON

Wi-Fi

Protocol	802.11b, g, n		
Region	Power max	Frequencies	Bandwidth
UE	15 dBm	2412 to 2462 MHz	20 MHz
US	16 dBm	2412 to 2462 MHz	20 MHz

Region selection: user selectable based on location

Performances:

- Max direct connections: 9 (ex: 8 nodes + 1 Tablet PC, or 9 nodes)
- Open field max distance to node: 70m

LoRa

Region	Power	Frequencies	Bandwidth	Max time on Air / Frame
UE	11 dBm	865,3 / 865,6 / 865,9 / 866,2 / 866,5 / 866,8 / 867,1 / 867,4 / 867,7 / 868,3 MHz	250 KHz	500ms
US	18 dBm	903 to 927MHz	500 KHz	250ms

Region selection: user selectable based on location

Occupied bandwidth for 24h : 0.83%

LTE cat M

Bands: 1, 3, 8, 20, 28

2G/3G

GSM 900 and DCS 1800

GNSS

Reception only (GPS, Glonass)

[S-lynks Node](#)

Wi-Fi

802.11b, g, n HT20			
Mode	Power	Frequencies	Bandwidth
UE	15 dBm	2412 to 2462 MHz	20 MHz
US	16 dBm	2412 à 2462 MHz	20 MHz

Performances:

- Max direct connections: 9 (ex: 8 nodes + 1 Tablet PC, or 9 nodes)
- Open field max distance to node: 70m

LoRa

Reception only

Mode	Power	Frequencies	Bandwidth
UE	11 dBm	865,3 / 865,6 / 865,9 / 866,2 / 866,5 / 866,8 / 867,1 / 867,4 / 867,7 / 868,3 MHz	250 KHz
US	18 dBm	903 to 927MHz	500 KHz

GNSS

Reception only (GPS, Glonass).

Deployment



Battery pack is not factory pre-assembled in the product and must be installed by **operator prior usage**.

Use only the type of battery provided by Sercel (not included): **S-LYNKS PACK PILES SLBB SIMPLE**, ref. **10052335**, nominal voltage: 7.2Vdc, nominal capacity: 187Wh



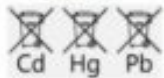
Caution: risk of explosion if the battery is replaced by an incorrect type.

Do not put the battery in a fire or a hot oven. Do not crush or cut the battery as this could cause an explosion.



Do not discard Sercel product batteries in the trash.

This product contains sealed batteries and must be disposed of properly. For more information, contact your local recycling/reuse or hazardous waste center.



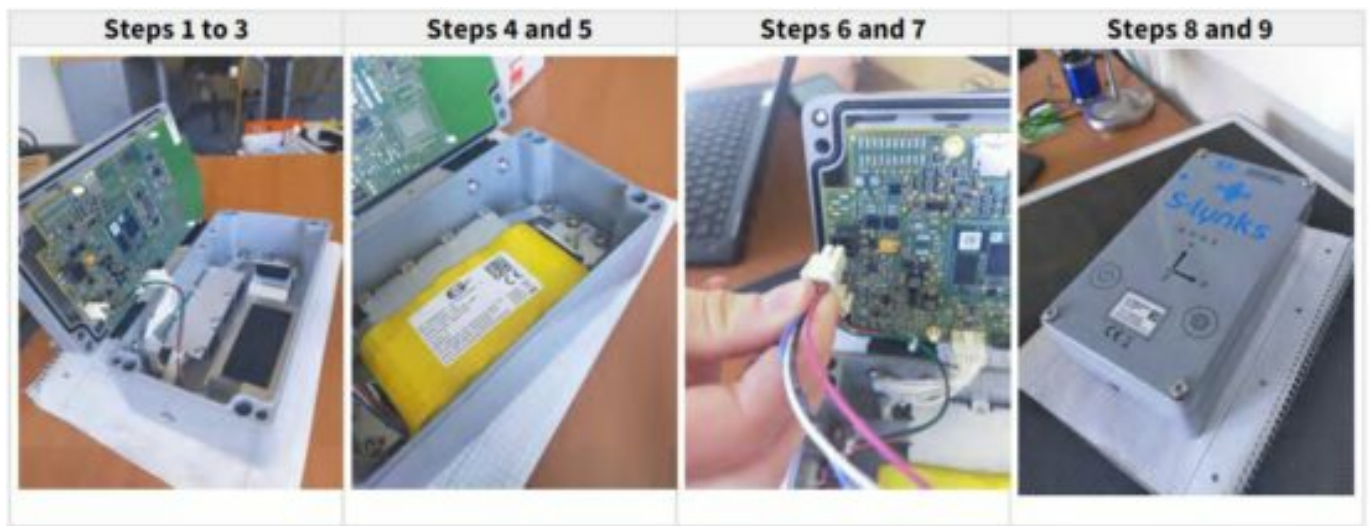
The battery pack ref. 10052335 is not rechargeable. Do not under any circumstances attempt to recharge them (risk of injury).

Connect the internal batteries of the Nodes

To connect the internal batteries of the Nodes, follow the following procedure:

1. Unscrew* the screws in the four corners of the front face of the case of the Node
2. Open the cover of the case of the Node
3. Remove the retainer flange from the battery pack
4. Position the battery pack in the provided location, with the label visible in the cables oriented towards the bottom of the case
5. Tighten* the nut of the retainer flange of the battery pack (tightening torque 7Nm in order to prevent any loosening over time)
6. Connect the battery pack to the electric board of the cover
7. Check that the diode of the Node has turned on when connected
8. Close the cover of the case of the Node
9. Progressively re-tighten* the screws in staggered fashion at the four corners of the front face of the case of the Node (tightening torque 3Nm in order to prevent any loosening over time)

*you will need a Phillips screwdriver (Pozidriv PZ2) and an M6 socket wrench (10mm).

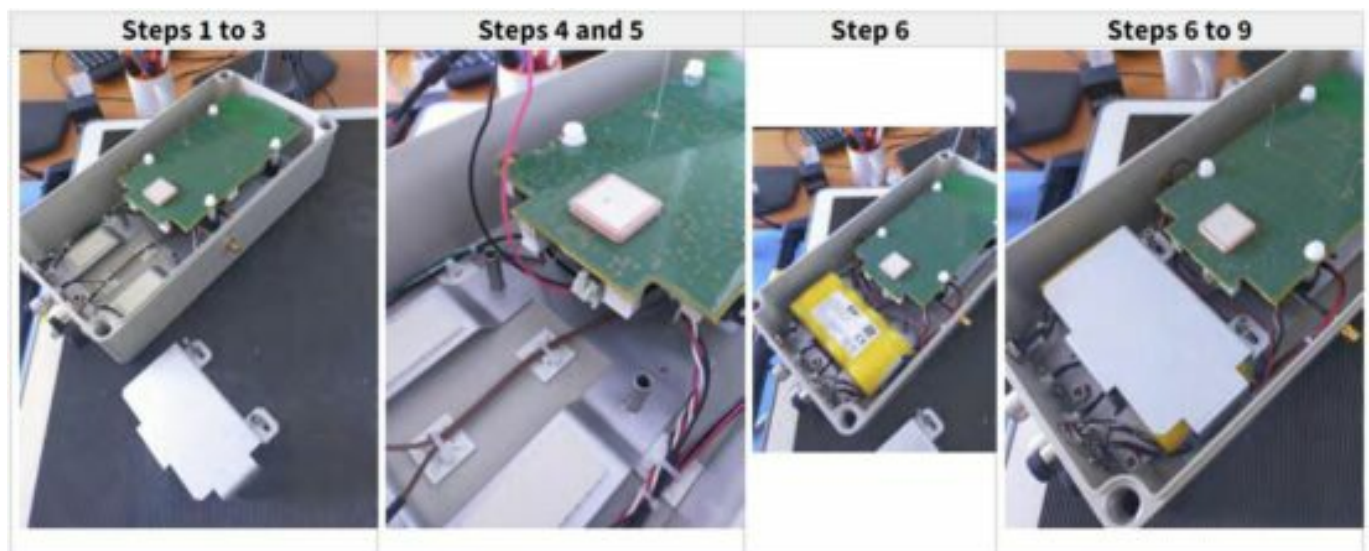


Connect the internal batteries of the Gateways

To connect the internal batteries of the Gateways, follow the following procedure:

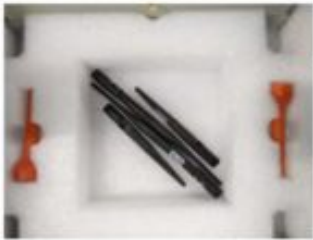
1. Unscrew* the screws in the four corners of the front face of the case of the Gateway
2. Open the cover of the case of the Gateway
3. Remove the retainer flange from the battery pack
4. Connect the battery pack of the Gateway (black terminal)
5. Check that the diode of the Gateway has turned on when connected
6. Place provided location, with the etiquette facing upwards, cable between the electronic
7. board of the cover and the battery pack
8. Remount and re-tighten* the retainer flange of the battery pack (tightening torque 2Nm in order
9. to prevent any loosening over time)
10. Close the cover of the case of the Gateway
11. Progressively re-tighten* the screws in staggered fashion at the four corners of the front face of
12. the case of the Gateway (tightening torque 3Nm in order to prevent any loosening over time)

*you will need a flathead screwdriver, a 3 Allen wrench (3mm) and an M6 socket wrench (10mm).



Connect the external LoRa and Wi-Fi antennas to the Gateway (optional)

This operation is carried out if you have an external LoRa or Wi-Fi whip antenna and you want to use it.

Photo	Description
 Figure 13: Antennas Wifi et Lora	<p>The Wifi and Lora antennas are available in the external antenna kit.</p> <p>Distinction:</p> <ul style="list-style-type: none">• Small antennas: Wifi• Large antennas: Lora

To connect the Wi-Fi and LoRa antennas with the Gateway, follow the procedure here in below:

1. Have your antennas and your Gateway available
2. Snap fit the antennas on the corresponding receivers:

ANT W: Wi-Fi antenna

ANT L: LoRa antenna



3. Orient the antennas in the desired direction.
4. Enable or Disable the use of the external antennas by initiating the following commands from the Acquisition menu on the application Field terminal:
 - a. Enable/Disable « WIFI External Antenna » for Wi-Fi.
 - b. Enable/Disable « LORA External Antenna » For LoRa.

Connect the external GNSS and LTE to the Gateway (optional)

This operation is carried out if you have an external antenna kit and you want to use it.

To connect the GNSS and LTE antennas with the Gateway, follow the procedure here in below:

1. Turn OFF the Gateway and connect your antennas to the corresponding connectors



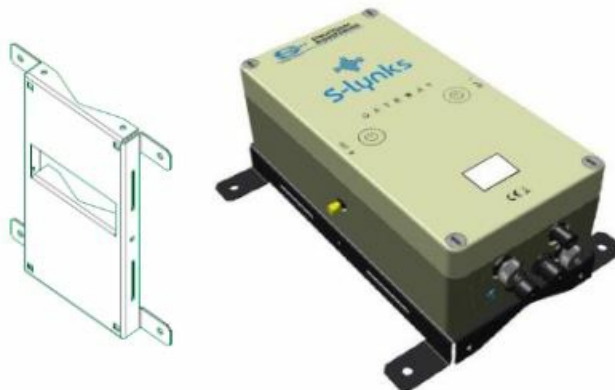
2. Connect the antennas to their cable.
5. Power on the Gateway and Enable or Disable the use of the external antennas by initiating the following commands from the Acquisition menu on the application Field terminal:
 - a. Enable/Disable « GNSS External Antenna » for GPS/Glonass.
 - b. Enable/Disable « LTE External Antenna » for LTE-M.

Position the Gateway

In order to reduce the risks of poor transmission between the Gateway and the Nodes, the latter must be positioned at the most equidistant location from all of the Nodes positioned on the structure.

1. Check the green blinking signal indicating that the Gateway is turned on. If this is not the case, turn on your Gateway by placing a Powerstick on the turn on symbol located on the front face of the case.
2. Position your Gateway on the structure in a stable position. The front face of the case of the Gateway (the one with the serial number of the Gateway) must imperatively be turned towards the sky for good GNSS coverage.

Support plate PN 10051066 included:



In the absence of GNSS coverage, data acquisition cannot be carried out.

Position the Nodes

Before positioning the Nodes, check that the latter are still turned on by checking for the presence of the green blinking signal at the base of the case. If the signal is inactive, turn on your Node by placing a Powerstick on the return on symbol located on the front face of the case or send a Lora wakeup via the Gateway with the field terminal application.

The nodes can be positioned anywhere on the structure, in a stable position. In order to carry out a valid data acquisition, the axes of the cases of the Nodes must be configured according to a common reference (reference example: River or other landscape element, road, building, etc.). This common reference will make it possible to

define on which axis of the case the data acquisition will be carried out (X, Y, Z, -X, -Y or -Z) and to enter it via the application of the fuel terminal.

With support bar PN 10046676 included (x2):



Powering up the Nodes and Gateways



Use a magnetic power stick on the turn on symbol of the Nodes and Gateways for powering up or switch to configuration state.



Boot up time (On power on or Magnetic power stick):


Audit Mode: 3 minutes

Monitoring Mode: 5 minutes

A blinking signal indicates the state of the Gateway:

Signal	Visual	Description
No signal		The Gateway is turned off
Blinking orange		The Gateway is in the process of turning on
Steady green (10s)		The Gateway has successfully started
Slowly blinking green		The Gateway is turned on
Slowly blinking orange		The Gateway is in configuration mode
Blinking red		An error has occurred

Maintenance

 To clean the metallic enclosure of the S-lynks, use only a dry cloth.

 **Electrostatic discharge:**

Use the following guidelines to provide a static-free repair station that will preclude any ESD-related damage to electronic circuits:

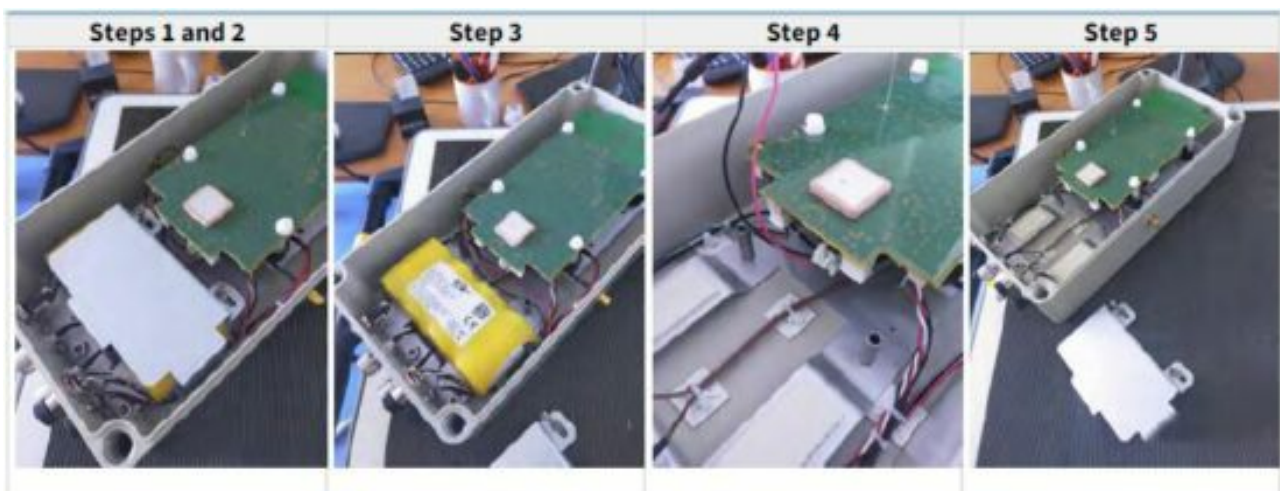
- All spare parts (circuit boards and ESD sensitive devices) should be stored and transported in static- shielding bags.
- Unless the repair station rests on a conductive floor, chairs or stools should rest on a grounded, rigid-type, staticdissipative floor mat.
- Use a static-dissipative table mat.
- Wear a static-control wrist strap or foot grounder.
- Provide common-point grounding for all conductive items (including personnel and soldering iron tip).
- To control the discharge rate and protect workers from electric shocks, both the table mat and wrist strap should be grounded through a 1-MΩ resistor. The mat should be connected to the same earth ground point as the wrist strap.
- Wear static-dissipative garments.

Replace a battery pack for Gateway

To connect the internal batteries of the Gateways, follow the following procedure:

1. Unscrew* the screws in the four corners of the front face of the case of the Gateway
2. Open the cover of the case of the Gateway
3. Remove the retainer flange from the battery pack
4. Detach the battery pack from the Gateway
5. Remove the battery pack from the provided location

* To carry out this operation, you will need a flathead screwdriver, a 3 Allen wrench (3mm) and an M6 socket wrench (10mm).

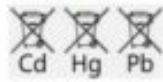


To connect a new battery pack, repeat the operation in the reverse order or consult “Connect the internal batteries of the Gateways”.

Tightening torque for the screws of the retainer flange of the battery pack: 2Nm



Do not discard Sercel product batteries in the trash.

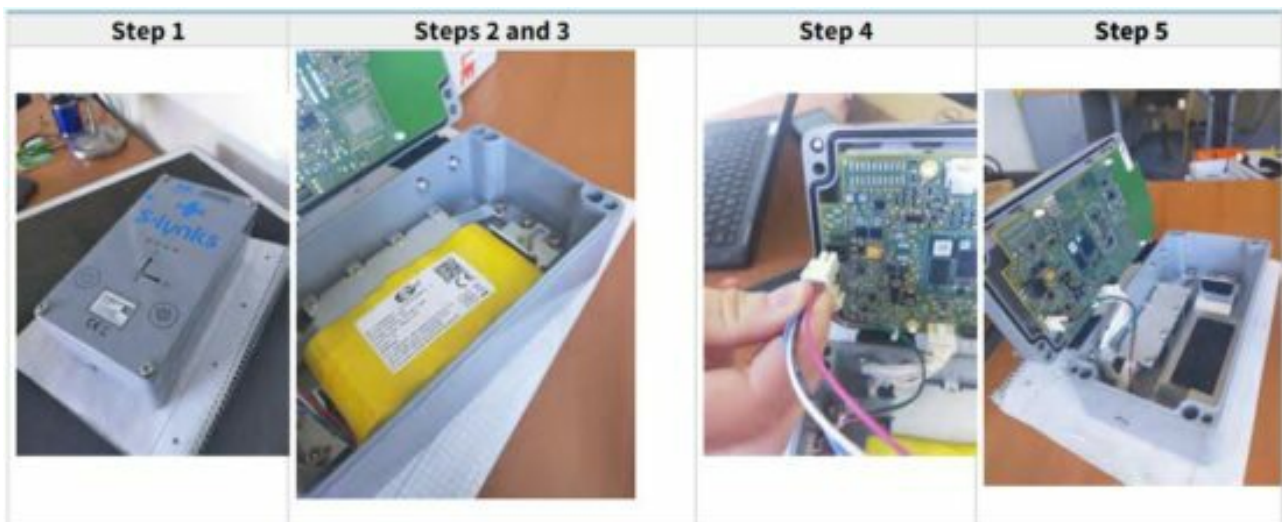


Replace a battery pack for Node

To disconnect the internal batteries from the Nodes, follow the following procedure:

1. Unscrew* the screws in the four corners of the front face of the case of the Node
2. Open the cover of the case of the Node
3. Unscrew the nut from the retainer flange of the battery pack
4. Detach the battery pack from the Node
5. Remove the battery pack

* To carry out this operation, you will need a Phillips screwdriver (Pozidriv PZ2) and an M6 socket wrench (10mm).

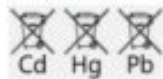


To connect a new battery pack, repeat the operation in the reverse order or consult “Connect the internal batteries of the Nodes”.

Tightening torque for the nut of the retainer flange of the battery pack: 7Nm



Do not discard Sercel product batteries in the trash.



Specifications

S-Lynks Gateway

Operating Voltage	7,2V
Battery capacity (nominal)	26Ah
Max Autonomy on backup battery	100 hours
Power consumption	Typical: 1.7 W, maximum: 3W
Input Voltage	12V
Dimensions without support bar (WxHxD):	324mm x 164mm x 100mm
Weight without support plate	4.5 kg
Dimensions with support plate (WxHxD):	332mm x 262mm x 130mm
Weight with support plate	5.5 kg
Operating Environment	IP65
Operating Temperatures	-30°C / +70°C
Storage Temperatures	-30°C / +70°C
Battery pack storage temperature	25°C
Pollution degree	II
Altitude functioning	< 2000m
Temperature sensor	Typical range: -30°C to +70°C, typical accuracy: ±0.5°C

S-Lynks Node

Operating Voltage	7,2V
Battery capacity (nominal)	26Ah
Max Autonomy on battery	Audit mode: 120 hours Monitoring mode: 3 years
Power consumption	Typical acquisition: 1.5W, maximum: 2W Typical sleep (Audit mode) : 70 mW Typical deep sleep (Monitoring mode) : 350 µW
Dimensions without support bar (WxHxD):	220mm x 120mm x 90mm
Weight without support plate	1.8 kg
Dimensions with support bar (WxHxD):	230mm x 205mm x 100mm
Weight with support plate	2.3 kg
Operating Environment	IP65
Operating Temperatures	-30°C / +70°C
Storage Temperatures	-30°C / +70°C
Battery pack storage temperature	25°C
Pollution degree	II
Altitude functioning	< 2000m

Regulatory Information

European Union Statement

Sercel products meet the essential requirements of Directives

- RED 2014/53/UE (Radio)

- 2014/ 30/UE (EMC)
- 2014/35/UE (Low Voltage)
- 2011/65/UE (ROHS).



The S-Lynks Gateway and S-Lynks Nodes is a class-A device. In residential areas, the user may be requested to take appropriate measures in the event of RF interference caused by this device.

FCC US Statement

Changes or modifications not expressly approved by the party responsible for compliance could void the user's authority to operate the equipment.

This device complies with part 15 of the FCC Rules. Operation is subject to the following two conditions:

- (1) This device may not cause harmful interference, and
- (2) this device must accept any interference received, including interference that may cause undesired operation

Note: This equipment has been tested and found to comply with the limits for a Class A digital device, pursuant to part 15 of the FCC Rules. These limits are designed to provide reasonable protection against harmful interference when the equipment is operated in a commercial environment. This equipment generates, uses, and can radiate radio frequency energy and, if not installed and used in accordance with the instruction manual, may cause harmful interference to radio communications. Operation of this equipment in a residential area is likely to cause harmful interference in which case the user will be required to correct the interference at his own expense.

This equipment complies with FCC's radiation exposure limits set forth for an uncontrolled environment under the following conditions :

1. This equipment should be installed and operated such that a minimum separation distance of 20cm is maintained between the radiator (antenna) and user's/nearby person's body at all times.
2. This transmitter must not be co-located or operating in conjunction with any other antenna or transmitter.

IC Canadian Statement

SERCEL products comply with Industry Canada EMI Class A requirements according to ICES-003 and RSS Gen. Les produits SERCEL sont conformes aux exigences Classe A de l'Industrie Canada selon les normes NMB-003 et CNR Gen.

Note These devices comply with Industry Canada's license-exempt RSSs. Operation is subject to the following two conditions:


1. These devices may not cause interference; and
2. These devices must accept any interference, including interference that may cause undesired operation of the device.

This equipment complies with RSS102's radiation exposure limits set forth for an uncontrolled environment under the following conditions:

1. This equipment should be installed and operated such that a minimum separation distance of 20cm is maintained between the radiator (antenna) and user's/nearby person's body at all times.
2. This transmitter must not be co-located or operating in conjunction with any other antenna or transmitter.

Read More About This Manual & Download PDF:

Documents / Resources

	<p>Sercel S-Lynks Gateway [pdf] User Manual S-Lynks Gateway, S-Lynks, Gateway</p>
---	---

References

- [User Manual](#)

Manuals+. Privacy Policy

This website is an independent publication and is neither affiliated with nor endorsed by any of the trademark owners. The "Bluetooth®" word mark and logos are registered trademarks owned by Bluetooth SIG, Inc. The "Wi-Fi®" word mark and logos are registered trademarks owned by the Wi-Fi Alliance. Any use of these marks on this website does not imply any affiliation with or endorsement.