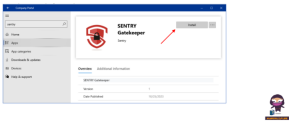


SENTRY Gatekeeper Company Portal



SENTRY Gatekeeper Company Portal User Guide

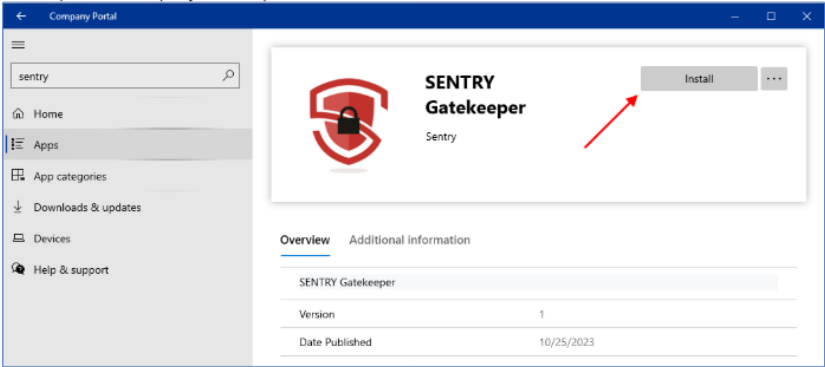
[Home](#) » [Sentry](#) » SENTRY Gatekeeper Company Portal User Guide 

Contents

- 1 SENTRY Gatekeeper Company Portal
- 2 Product Information
- 3 Product Usage Instructions
- 4 How to install SENTRY Gatekeeper
- 5 Documents / Resources
 - 5.1 References



SENTRY Gatekeeper Company Portal



Product Information

Specifications

- **Product Name:** SENTRY Gatekeeper
- **Installation Method:** Software installation on desktop

Product Usage Instructions

1. **Step 1:** Click on the Start menu icon located in the left lower corner of your desktop.
2. **Step 2:** Type “company” in the search area of the Start menu.
3. **Step 3:** Select Company Portal from the updated Start Menu.
4. **Step 4:** In the Company Portal search field:
 1. Enter “sentry”.
 2. Press the magnifying glass icon.

Frequently Asked Questions (FAQ)

Q: What should I do if I encounter an error during installation?

A: If you encounter any errors during installation, please ensure that your internet connection is stable and try restarting the installation process. If the issue persists, contact our customer support for assistance.

Q: Can I install SENTRY Gatekeeper on multiple devices?

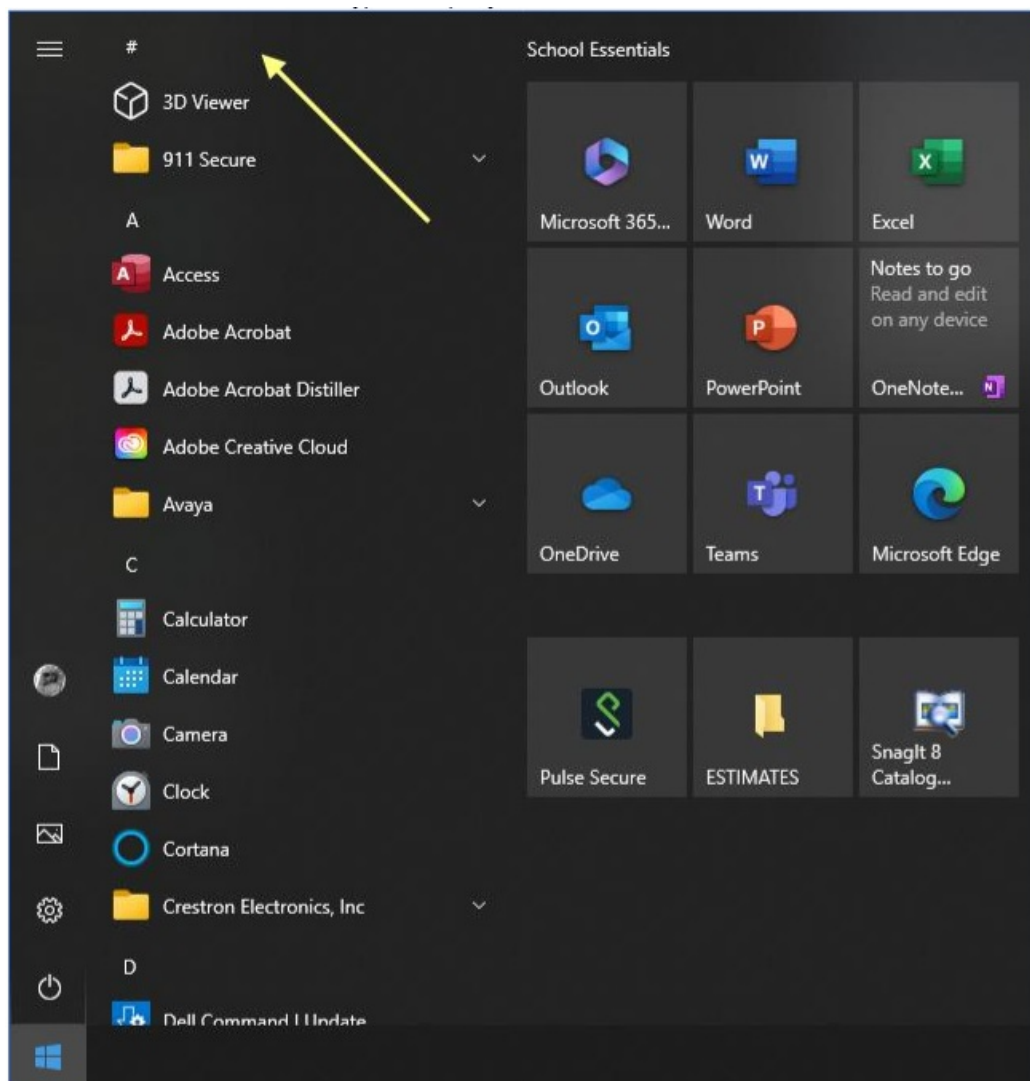
A: SENTRY Gatekeeper is licensed for single-device use. Contact our sales team for information on multi-device licensing options.

How to install SENTRY Gatekeeper

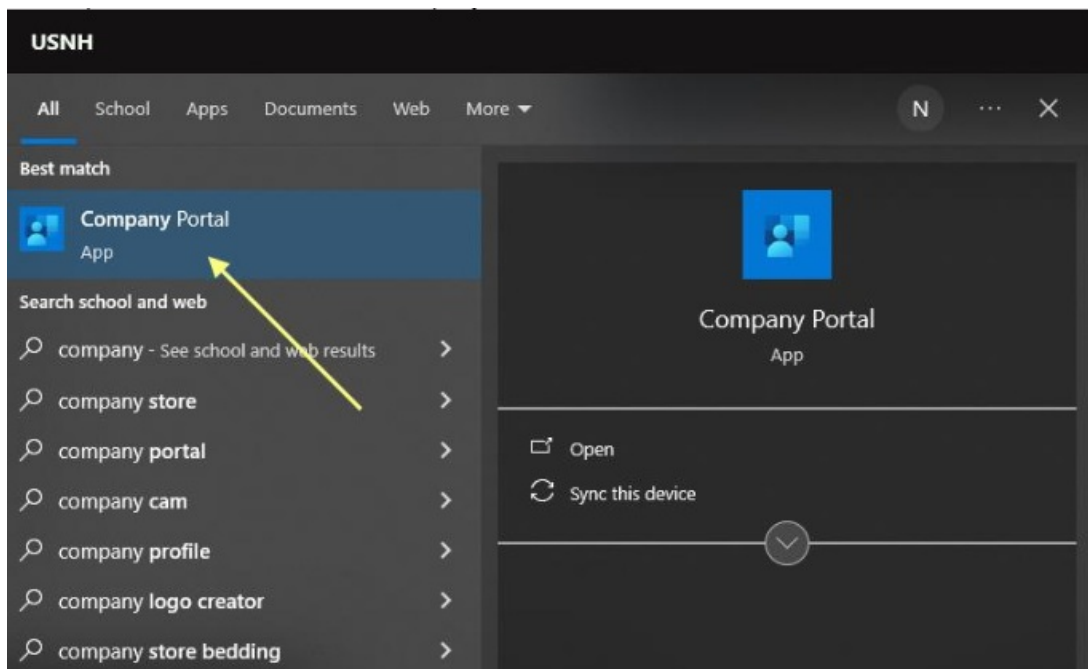
1. In the left lower corner on your desktop, select the “Start menu” -icon.



2. In the “Start menu search area”, type “company”.

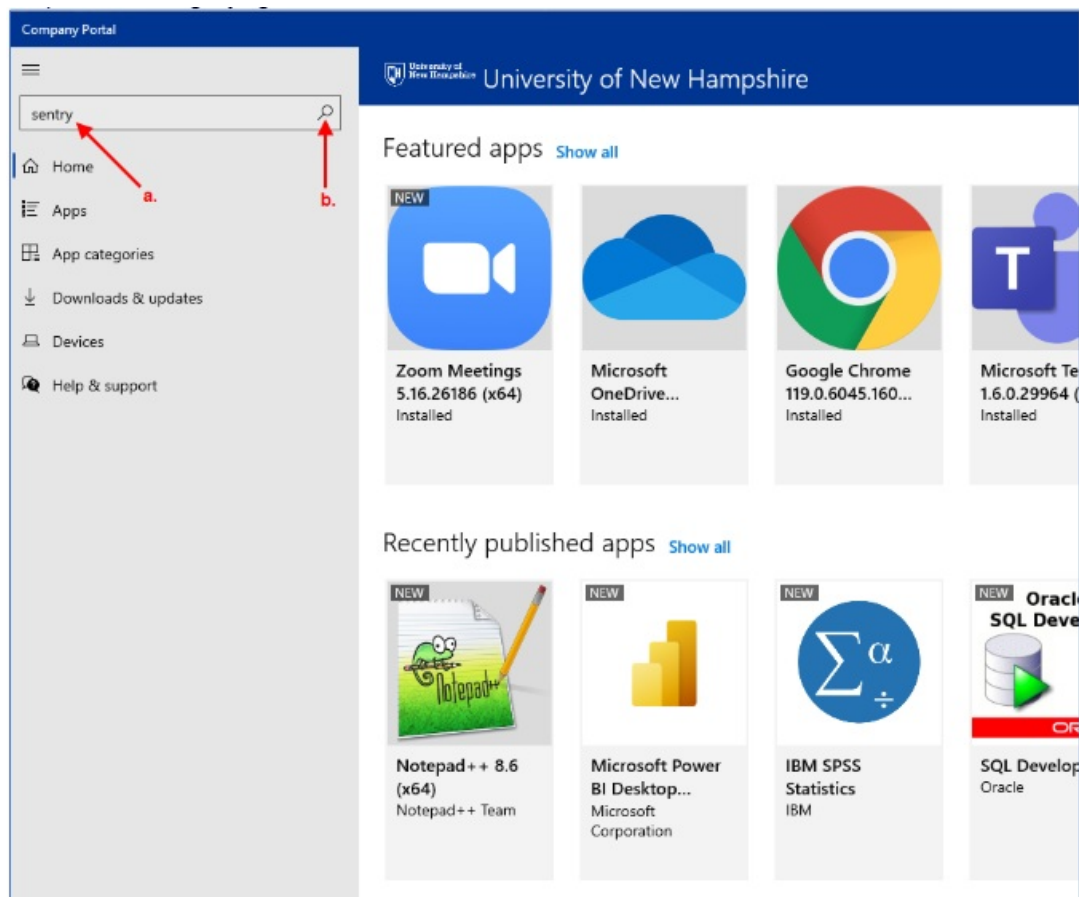


3. In the updated “Start Menu”, select “Company Portal”.

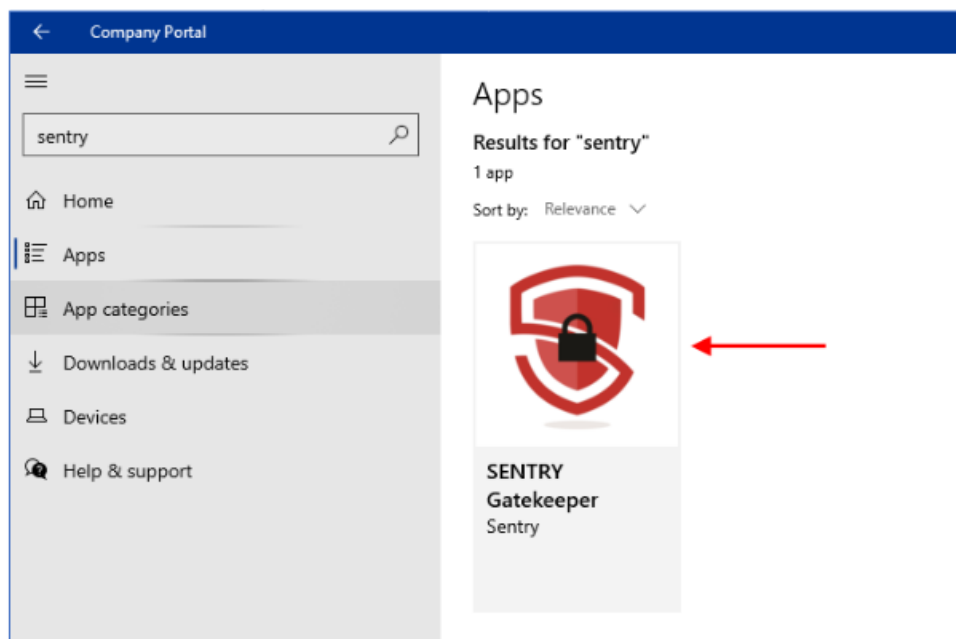


4. In “Company Portal” search field,

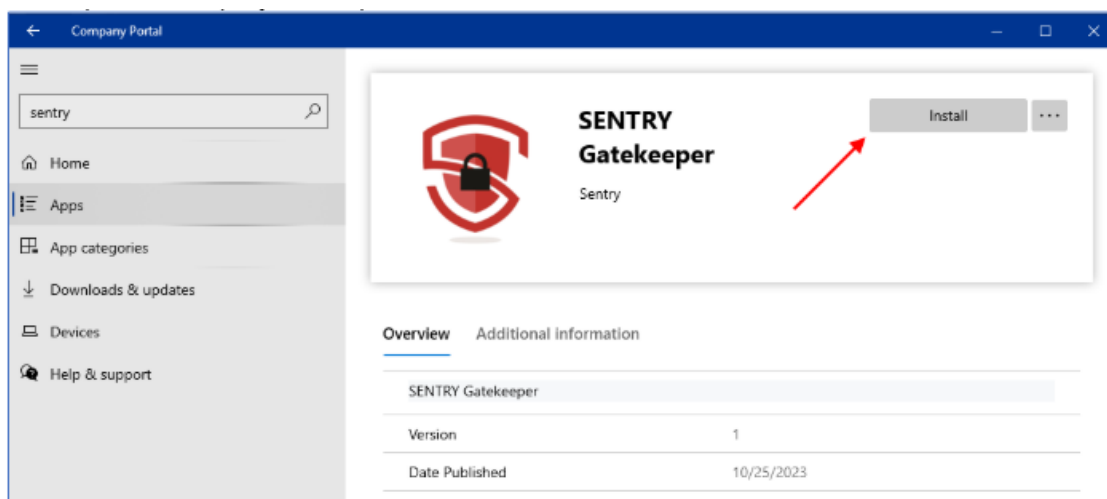
- enter “sentry” and
- press the “magnifying”- icon.



5. In the updated “Company Portal”, press “SENTRY Gatekeeper” – icon.




6. In the updated “Company Portal”, press the “Install” button.



7. Follow the prompts.

Documents / Resources

	SENTRY Gatekeeper Company Portal [pdf] User Guide Gatekeeper Company Portal, Gatekeeper, Company Portal, Portal
------------------------------------------------------------------------------------	------------------------------------------------------------------------------------------------------------------------------------

References

- [User Manual](#)

[Manuals+](#), [Privacy Policy](#)

This website is an independent publication and is neither affiliated with nor endorsed by any of the trademark owners. The "Bluetooth®" word mark and logos are registered trademarks owned by Bluetooth SIG, Inc. The "Wi-Fi®" word mark and logos are registered trademarks owned by the Wi-Fi Alliance. Any use of these marks on this website does not imply any affiliation with or endorsement.