

sentrax
**Zenix
LON-2
Locator
and
Gateway**



Sentrax Zenix LON-2 Locator and Gateway User Guide

[Home](#) » [Sentrax](#) » Sentrax Zenix LON-2 Locator and Gateway User Guide 

Contents

- [1 Sentrax Zenix LON-2 Locator and Gateway](#)
- [2 Product Information](#)
- [3 Product Usage Instructions](#)
- [4 FAQ](#)
- [5 Introduction](#)
- [6 Hardware Network Installation](#)
- [7 Device Status](#)
- [8 ZENIX LON-2 Configuration](#)
- [9 FCC Statement](#)
- [10 Documents / Resources](#)
 - [10.1 References](#)



Sentrax Zenix LON-2 Locator and Gateway



Product Information

Specifications

- **Type:** BLE (AoA)-based locator and gateway
- **Accuracy:** Submeter location accuracy
- **Version:** 2.1

Product Usage Instructions

Introduction

The ZENIX LON-2 is a BLE (AoA)-based locator and gateway that provides highly precise submeter location accuracy.

Accessory List

Accessories included:

1. 12V – 2A Power Supply
2. Ethernet Cable – Blue/Grey color (POE)
3. Mounting Bracket – Mount product to ceiling/wall

Hardware Description

The hardware components of the ZENIX LON-2 include:

- Gateway Status LED
- Gateway Power LED
- POE Port
- USB Power OUT
- AOA Power LED
- AOA Status LED
- Reset Button
- DC 12V IN
- Wall Mount bracket
- Serial Sticker

FAQ

Q: How do I find the IP address of the ZENIX LON-2?

A: To find the IP address of the ZENIX LON-2, note down the MAC address written on the back of the device. Open the Advanced IP Scanner Software, enter your network device's IP pool, and click on the Scan button. Upon successful scan, locate the ZENIX LON-2 IP Address corresponding to your MAC Address.

BLE (AoA)-based locator and gateway that provides highly precise submeter location accuracy.

ZENIX LON-2 Configuration Guide



Introduction

Accessory List

1. 12V – 2A Power Supply
2. Ethernet Cable – Blue/Grey color (POE)
3. Mounting Bracket – Mount product to ceiling/wall

Hardware Description

1. Gateway Status LED
2. Gateway Power LED
3. POE Port
4. USB Power OUT
5. AOA Power LED
6. AOA Status LED
7. Reset Button
8. DC 12V IN
9. Wall Mount bracket
10. Serial Sticker



Figure 1 ZENIX LON-2 Front View



Figure 1 ZENIX LON-2 Back View

Required Software

Below are the software names with links:

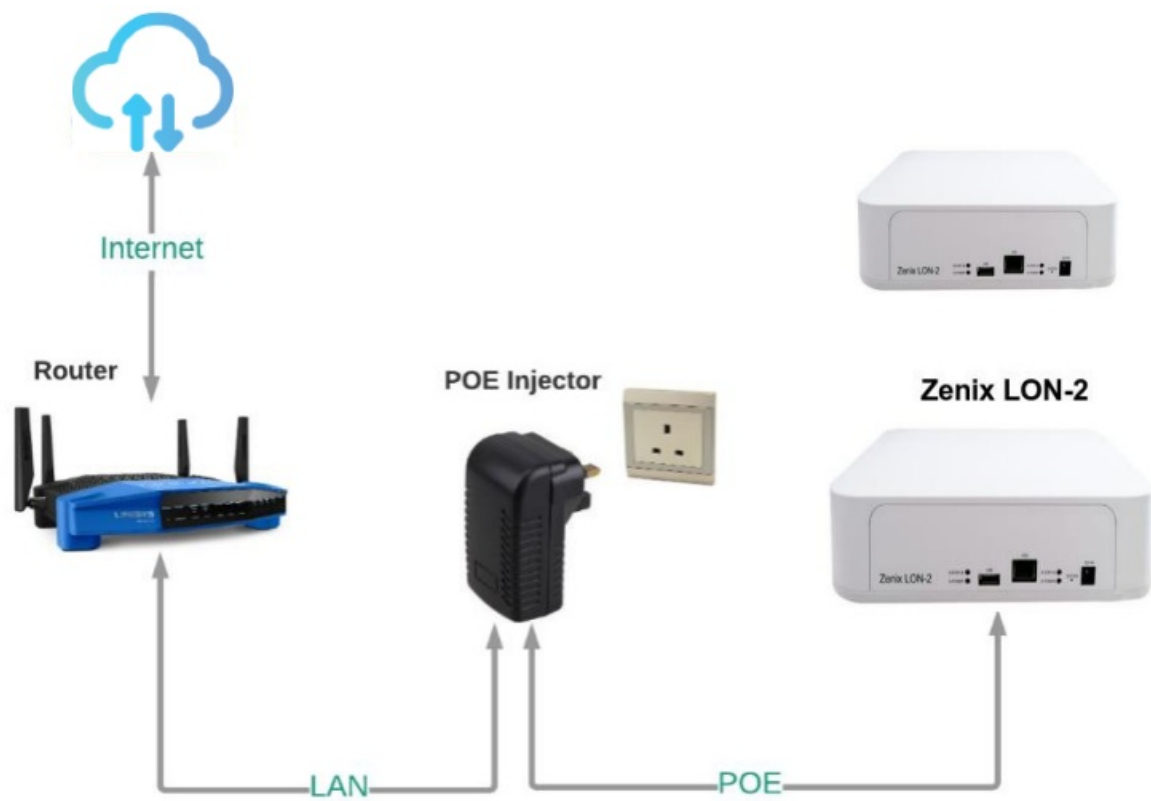
Software Name	Version	Download link
MQTT Fx	Any	MQTT Fx Software
Advance IP Scanner	Any	https://www.advanced-ip-scanner.com/

[MQTT Fx Software](#)

<https://www.advanced-ip-scanner.com/>

Hardware Network Installation

Power using 12 V Adapter / POE Injector



POE Switch

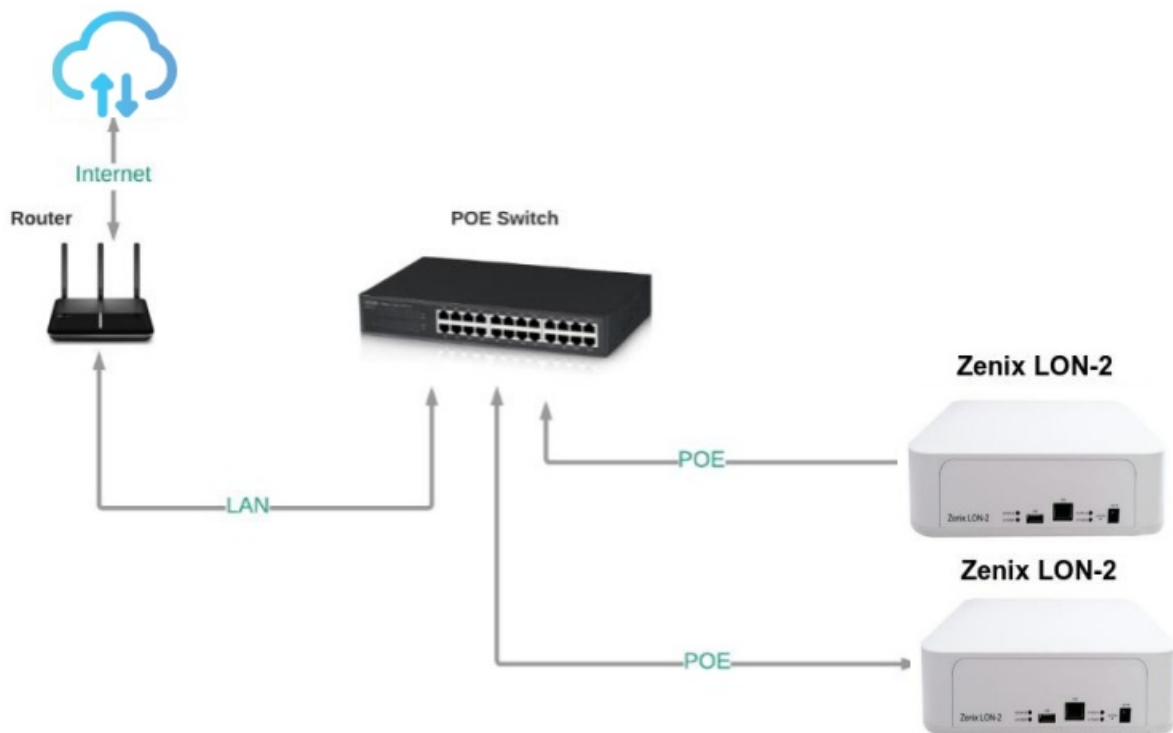


Figure 5 ZENIX LON-2 Wiring using POE Switch

Device Status

After a delay of 2 to 5 seconds, the ZENIX LON-2 Power LED will turn on, signaling the commencement of the device boot-up process. Please be patient for an additional 1 to 2 minutes as the device completes its boot-up sequence.

The current status of the ZENIX LON-2 can be determined by observing the status LED as below:

Status LED (Green LED)	Rate	Description
OFF	OFF	System booting Up
Blinking	3s (ON) 3s (OFF)	Connecting to Internet
Blinking	1s (ON) 1s (OFF)	Connecting to USB
ON	ON	Connected

ZENIX LON-2 Configuration

Finding ZENIX LON-2 IP Address

- Note down your ZENIX LON-2 MAC Address. MAC Address of ZENIX LON-2 is written at the back of device



Figure 6 ZENIX LON-2 MAC Address

- Open Advanced IP Scanner Software.
- Enter your Network devices IP pool.
- Click on the Scan Button.

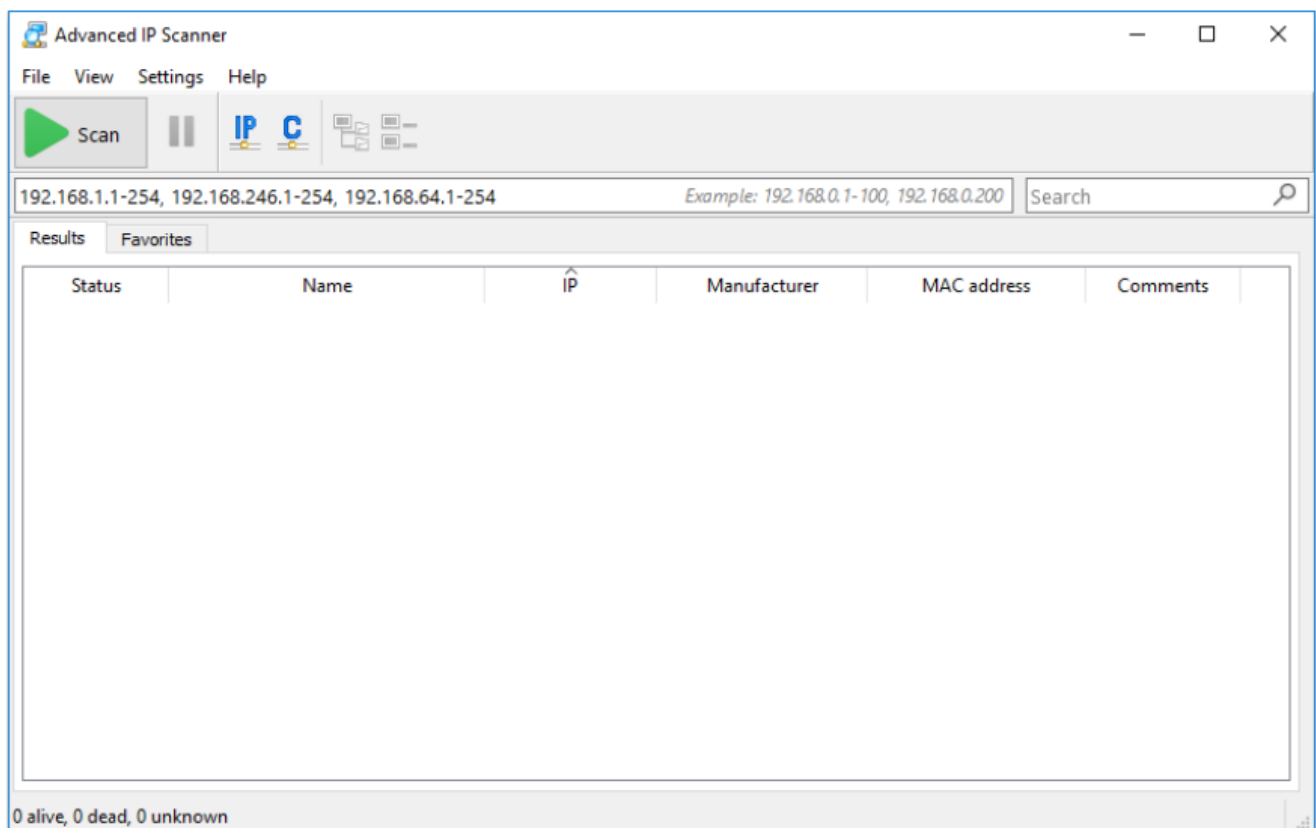


Figure 7 Advance IP Scanner Home Screen

- Upon a successful scan, locate your ZENIX LON-2 IP Address corresponding to your MAC Address.

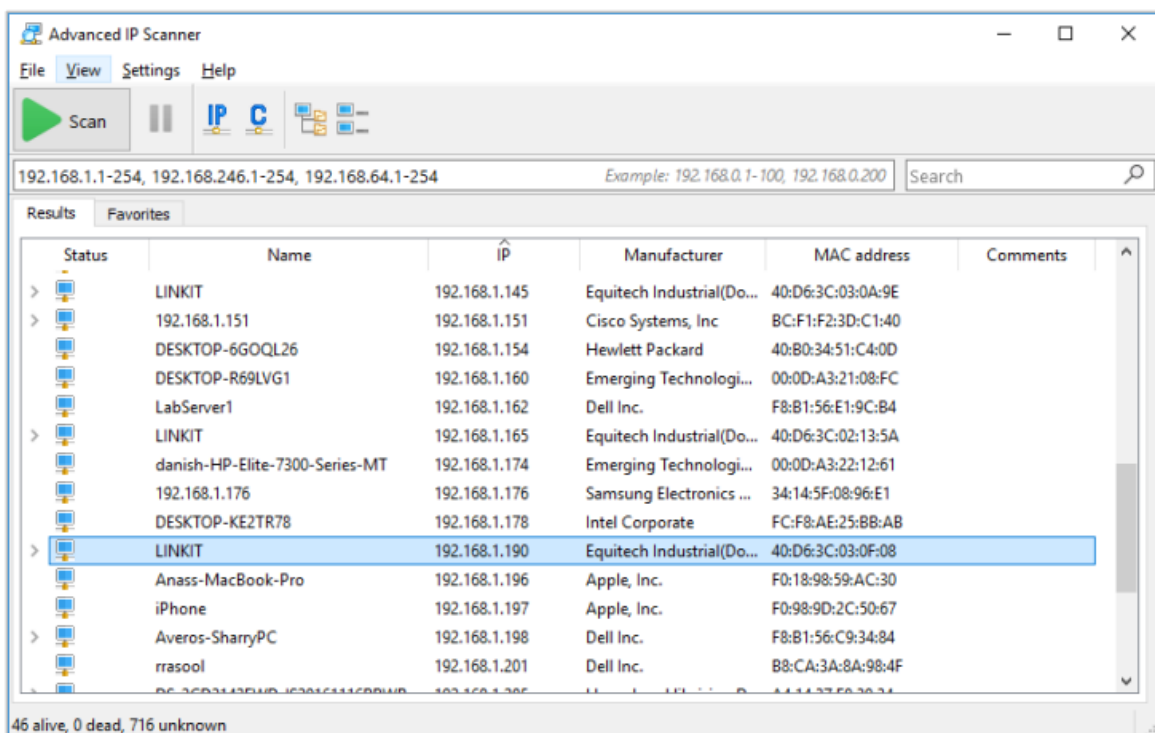


Figure 8 ZENIX LON-2 IP Address using Advance IP Scanner

- Access the ZENIX LON-2 Configuration page by entering the IP address into your browser. This action will redirect you to the device's Admin login page.

Figure 9 ZENIX LON-2 Admin Page

- Enter the password (SentraxGateway1234) and click “Login”. You will be directed to the Home Page as illustrated in the image below.

Sentrax logo Summary Telemetry Filtering Firmware Update Logout	
System Summary	
Hostname	LON2:40:D6:3C:3C:A5:18
MAC Address	40:D6:3C:3C:A5:18
Hardware version	CB008V1R0
Firmware Version	F008V1R0
Local Time	2022-08-09 16:27:29
Uptime	3h 52m 58s
MQTT Status	Connected
AoA Status	Scanner Up
BLE Status	Scanner Up
Wifi Status	Disabled
Ethernet Status	Enabled
Memory	49MB/246MB
IP address	192.168.0.198

Figure 10 ZENIX LON-2 Summary Page

Firmware Update

Automatic Update:

The main page provides information on the current firmware version installed. Refer to the image below to identify the displayed current firmware version on the main page.

Sentrax logo Summary Telemetry Filtering Firmware Update Logout	
System Summary	
Hostname	LON2-40:D6:3C:A5:18
MAC Address	40:D6:3C:3C:A5:18
Hardware version	CB008V1R0
Firmware Version	F008V1R0
Local Time	2022-08-09 16:27:29
Uptime	3h 52m 58s
MQTT Status	Connected
AoA Status	Scanner Up
BLE Status	Scanner Up
Wifi Status	Disabled
Ethernet Status	Enabled
Memory	49MB/246MB
IP address	192.168.0.198

Click on Firmware Update from the Main Menu to navigate to the firmware update page. If a new firmware update is available, the button will be visible as shown in the above image. Click this button to initiate the firmware update.

Sentrax logo Summary Telemetry Filtering Firmware Update Logout

Upgrade

Flash new firmware image

Upload a sysupgrade-compatible image here to replace the running firmware.

Image

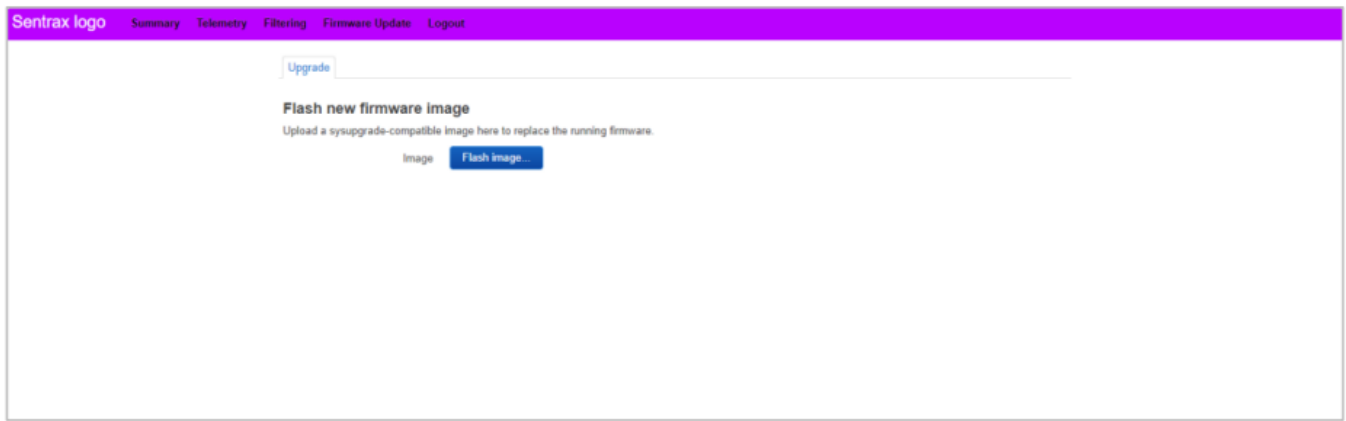
Flash image...

New firmware is available

The update may take between 15 to 20 minutes to complete depending upon the internet speed.

Important note: It is recommended to have a stable internet connection and stable power supply during the update procedure.

After 15 minutes, refresh the firmware update tab and you will be directed to Login-in page. Re-enter your login credentials and navigate back to the firmware update tab.



After a successful update, the “New firmware is available” button will disappear as shown in the above image. If the page shows problem in loading after refresh, please wait for a few additional minutes and then try again. Verify the updated firmware version on the home page. Reboot the device by unplugging and re-plugging in the power supply (optional).

Manual Update:

To manually update by uploading the firmware file, kindly reach out to sales@sentrax.com to obtain the latest firmware file and a comprehensive guide on the manual firmware upload process.

MQTT Configuration

After Login, Click on Telemetry from the options on the top to change the following setting as per your requirements:

- **MQTT Server:** Address of MQTT server
- **Client Id:** Device Floor ID.
- **MQTT Username:** Username of MQTT server. If the MQTT server does not have username leave it blank.
- **MQTT Password:** Password of MQTT server. If the MQTT server does not have password leave it blank.
- **MQTT Topic:** Topic on which data will be posted
- **Data Posting Rate:** Interval between two consecutive data
- **Data Alive Ping:** Device Alive message rate

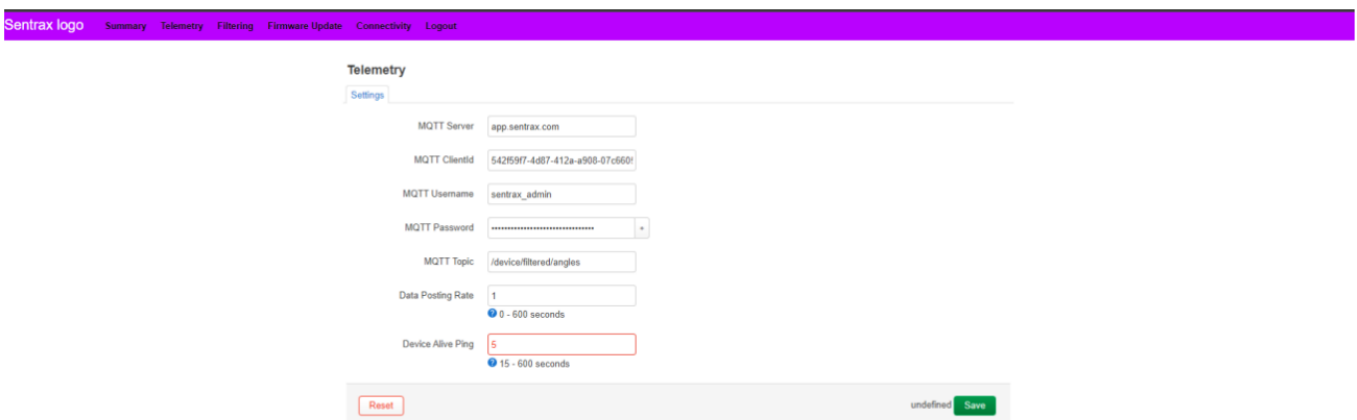


Figure 11 ZENIX LON-2 MQTT Configurations

AoA Filtering Configuration

Click on Filtering from the options on the top to change the following setting as per your requirements:

Moving Average Window: A fixed interval of time when the angles stream is processed to calculate average outputs.

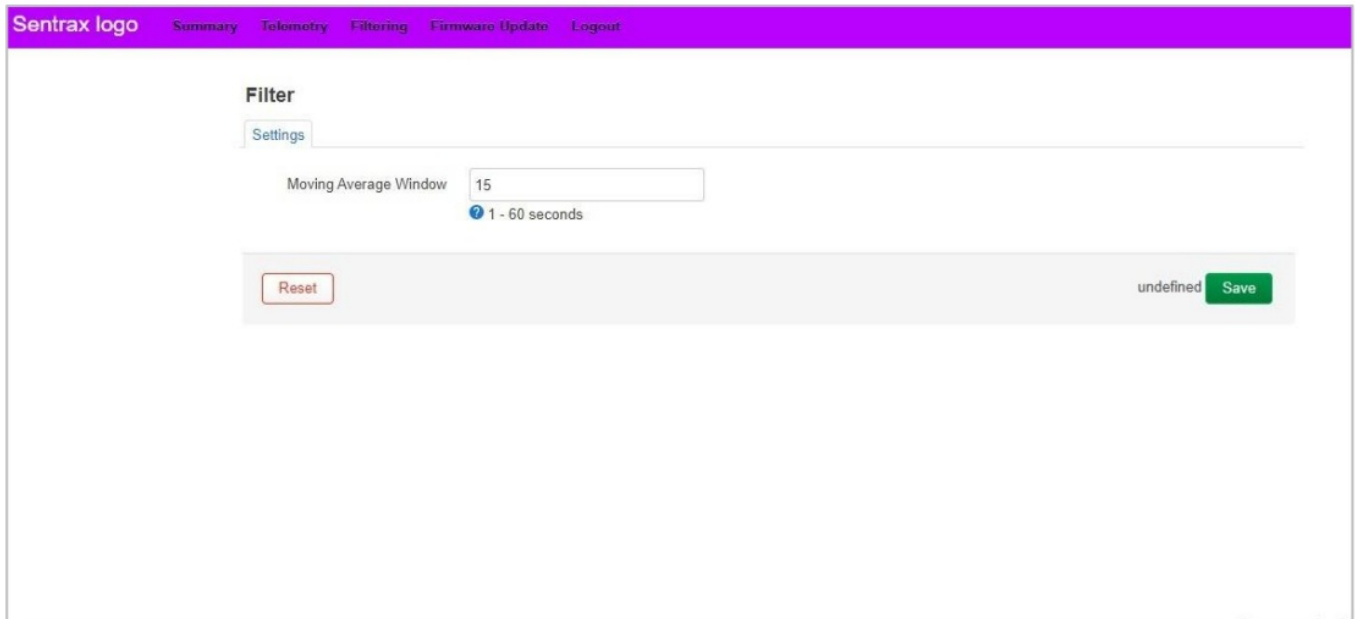


Figure 12 ZENIX LON-2 Filtering Configuration

Wi-Fi Connectivity – Preparation Steps

Power the ZENIX LON-2 using the provided 12V power adapter. Please wait until the LON-2 access point is visible. The format of this access point will be 'LON2_' followed by the last 6 digits of the MAC address. For more clarity, refer to Figure-13.



Figure-13

Before performing Wi-Fi configuration, we need to determine the MAC address of the WLAN connection. Enable the 'Mobile hotspot' feature on your Windows laptop. Refer to Figure 14 for further clarity.

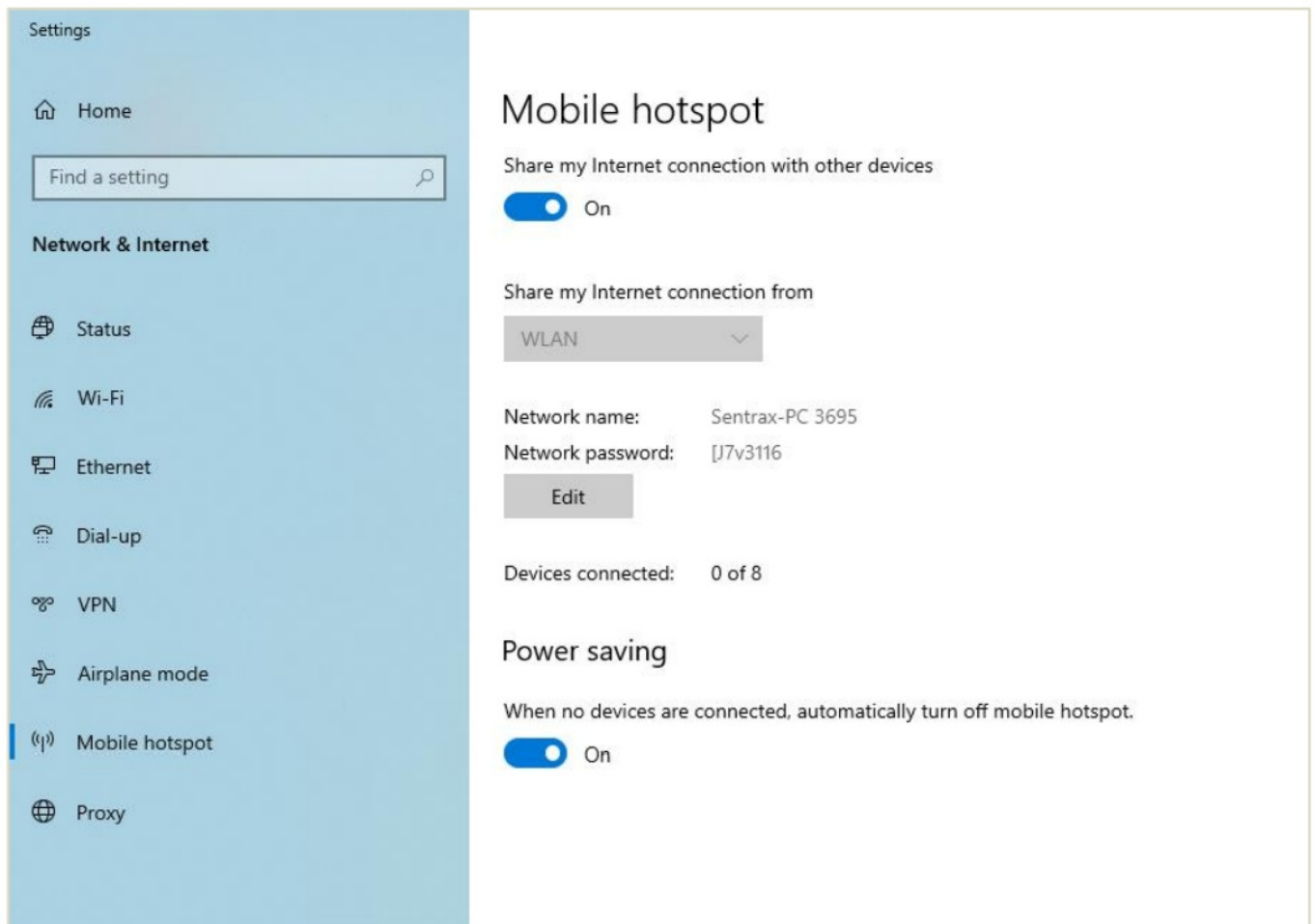


Figure-14

Connect your Windows laptop to the LON2 access point using the following password:

Password: 12345678

After a successful connection, enter '192.168.1.1' in the web browser. Use the default login credentials to access the configuration page. Navigate to the 'Connectivity' option; refer to Figure-15 for further clarity.

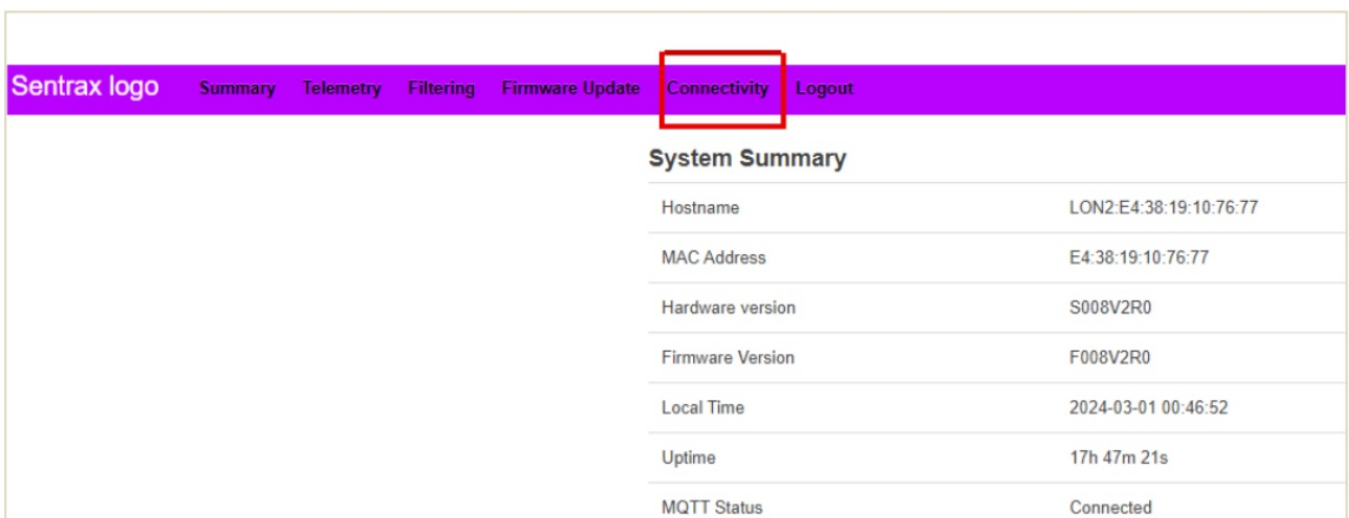


Figure-15

The configuration screen for connectivity will be displayed; refer to Figure-16 for additional clarity.

The screenshot shows the 'Connectivity' settings page. Under the 'Settings' tab, the 'Enable DHCP' checkbox is checked. Below it, the 'IP Address' is set to 192.168.2.2, 'Netmask' to 255.255.255.0, and 'Gateway' to 192.168.2.1. The 'Config WiFi' checkbox is unchecked. Below it, there is a link 'Enable WiFi Client mode (station mode)'. The 'SSID' field is empty, and there is a 'Scan' button next to it. The 'Password' field is empty with a '*' icon on the right. At the bottom, there is a 'Reset' button on the left and a 'Save' button on the right.

Figure-16

First, enable the 'Config WiFi' checkbox, and then perform a 'Scan' for available networks. Connect to the SSID of the 'Mobile hotspot' on your Windows laptop, enter its password, and then 'Save' the configuration settings. For further clarity, refer to Figure-17

The screenshot shows the 'Connectivity' settings page. Under the 'Settings' tab, the 'Enable DHCP' checkbox is checked. Below it, the 'IP Address' is set to 192.168.2.2, 'Netmask' to 255.255.255.0, and 'Gateway' to 192.168.2.1. The 'Config WiFi' checkbox is now checked. Below it, there is a link 'Enable WiFi Client mode (station mode)'. The 'SSID' field now contains the text 'Sentrax-PC 3695', and the 'Scan' button is still present. The 'Password' field is filled with asterisks and has a '*' icon on the right. At the bottom, there is a 'Reset' button on the left and a 'Save' button on the right.

Figure-17

Now, navigate back to 'Mobile hotspot' settings. On this screen, you will find the LON2 MAC address along with its assigned IP address. Since this MAC address will be used in the upcoming steps, it is crucial to save it for later use. Refer to Figure-18 for further clarity.

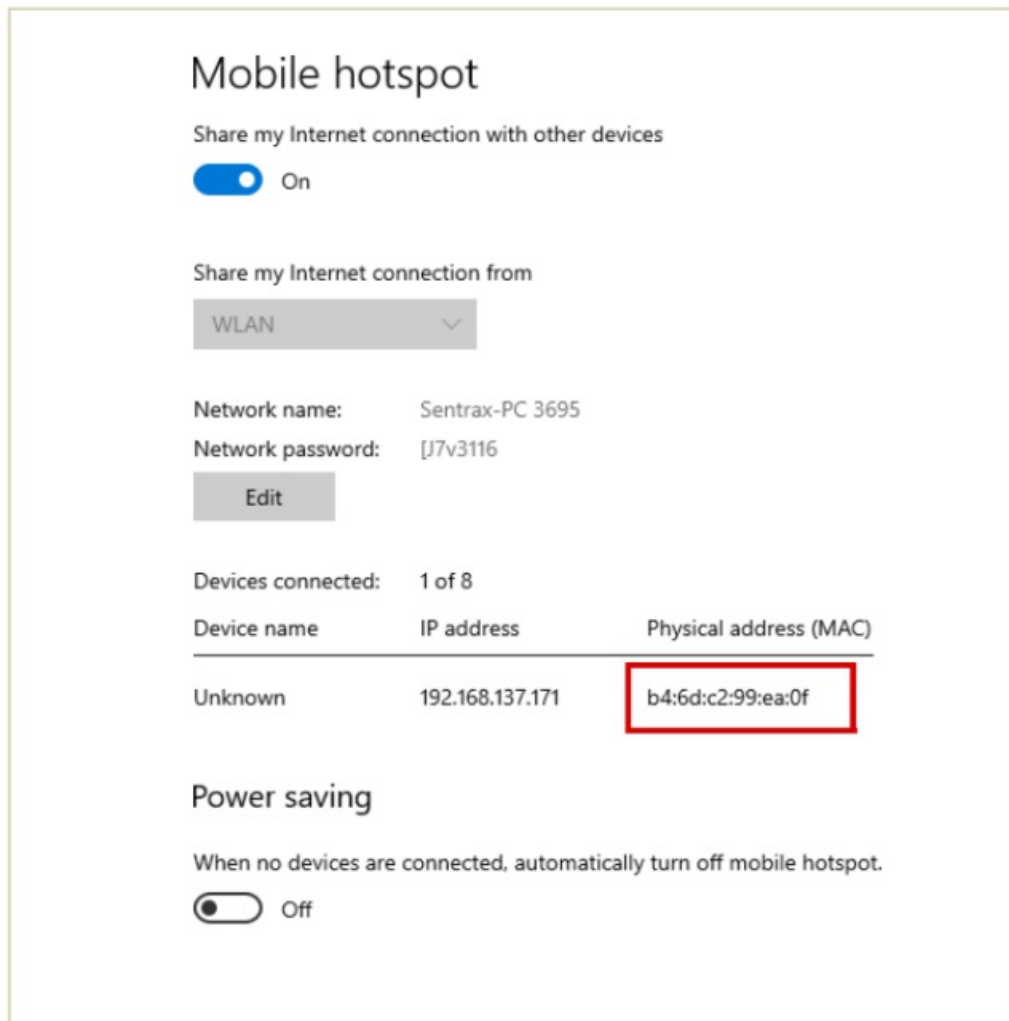


Figure-18

WiFi Configuration on Windows

Once again, navigate to 'Mobile hotspot' settings on the Windows laptop and use the IP assigned to LON2. Enter the IP in the web browser. As the network is provided through the Windows laptop, in this configuration, LON2 will always have an IP from the 192.168.137.XXX pool. Refer to Figure-19 for additional clarity.

Mobile hotspot

Share my Internet connection with other devices

☒ On

Share my Internet connection from

WLAN

Network name: Sentrax-PC 3695

Network password: [J7v3116]

Edit

Devices connected: 1 of 8

Device name	IP address	Physical address (MAC)
Unknown	192.168.137.171	b4:6d:c2:99:ea:0f

Power saving

When no devices are connected, automatically turn off mobile hotspot.

☐ Off

Figure-19

Utilize the default credentials to access the web page settings once again.

← → ↻ ⚠ Not secure 192.168.137.171/cgi-bin/luci/

Sentrax logo

root

password

Login

Figure-20

Navigate back to the 'Connectivity' tab, then simply press the 'Scan' button. A list of all available networks will be displayed. 'Connect' to the desired wireless network, and then 'save' the configuration settings. Refer to Figure-21 for further guidance.

Connectivity

Settings

Enable DHCP

☒

IP Address

Netmask

Gateway

Config WiFi

☒

Enable WiFi Client mode (station mode)

SSID

Scan

Password

Reset

Save

Figure-21

Before proceeding with further steps, please ensure that the network configured for LON2 is the same as the one to which the Windows laptop is connected. Utilize the 'Advanced IP Scanner' software to find out the IP assigned to the LON2 device. Press the 'Scan' button and wait for the scanning period to elapse. Refer to Figure-22 for additional clarity.

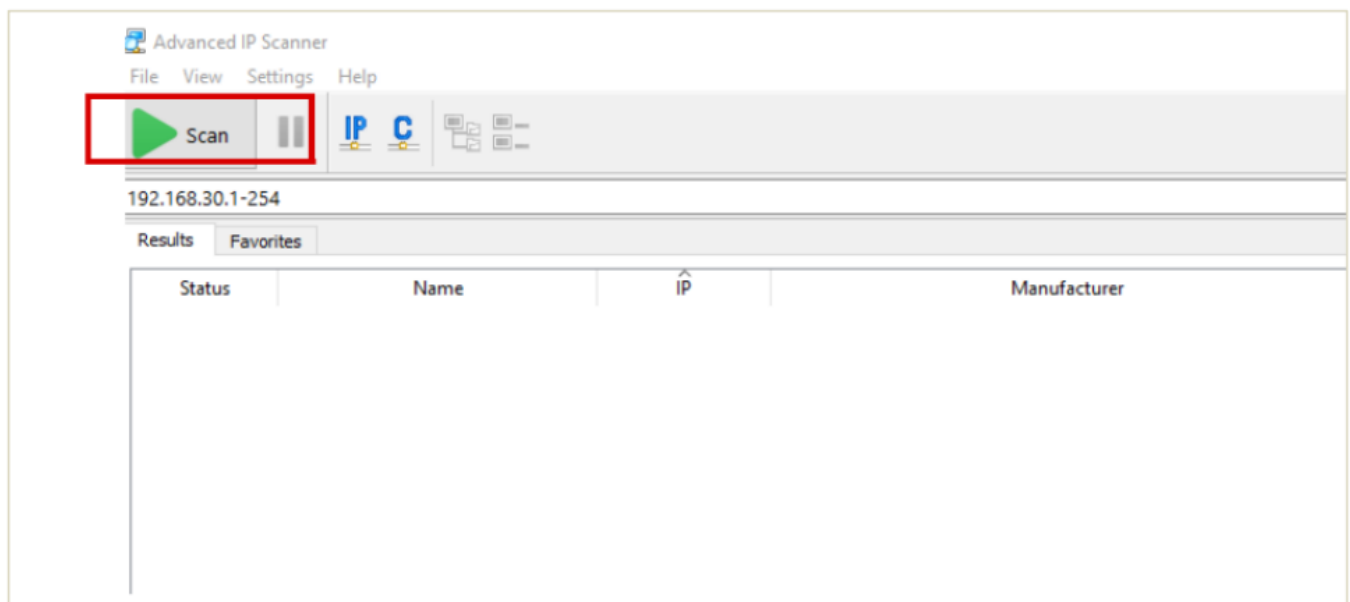


Figure-22

After the scanning period has elapsed, use the search bar on the top right-hand side. Enter the MAC address, which was explored in the 3rd heading of this document (Preparation Steps), into the search bar to find the IP assigned to LON2. Refer to Figure-23 for further clarity.

GmbH.

Given that Sentrax will continuously improve and develop the product, changes may be made to the information in this manual at any time without any obligation to notify any person of any such revisions or changes. Sentrax will make all possible efforts to secure the accuracy and integrity of this manual.

Note: Reproduction, transfer, distribution or storage of part or all the contents of this document in any form without the prior permission of Sentrax GmbH is prohibited.


CONNECT WITH US

www.sentrax.com

support@sentrax.com

Copyright © 2024, Sentrax GmbH. All Rights Reserved.

Documents / Resources

	<p>Sentrax Zenix LON-2 Locator and Gateway [pdf] User Guide Zenix LON-2, Zenix LON-2 Locator and Gateway, Locator and Gateway, Gateway</p>
---	--

References

- [🌐 Sign in to your account](#)
- [🔍 Advanced IP Scanner - Download Free Network Scanner](#)
- [📖 User Manual](#)

[Manuals+](#), [Privacy Policy](#)

This website is an independent publication and is neither affiliated with nor endorsed by any of the trademark owners. The "Bluetooth®" word mark and logos are registered trademarks owned by Bluetooth SIG, Inc. The "Wi-Fi®" word mark and logos are registered trademarks owned by the Wi-Fi Alliance. Any use of these marks on this website does not imply any affiliation with or endorsement.