

SENSYS networks FlexMag3 Sensor



SENSYS networks FlexMag3 Sensor User Guide

[Home](#) » [SENSYS Networks](#) » SENSYS networks FlexMag3 Sensor User Guide 

Contents

- 1 SENSYS networks FlexMag3 Sensor
- 2 Before you begin install, you will need
- 3 FlexMag3 Sensor Installation with EZ-Out: Quick Start Guide
- 4 Removing the sensor from EZ-Out Cup
- 5 Installing a new sensor in EZ-Out cup
- 6 Documents / Resources
 - 6.1 References



SENSYS networks FlexMag3 Sensor



Before you begin install, you will need

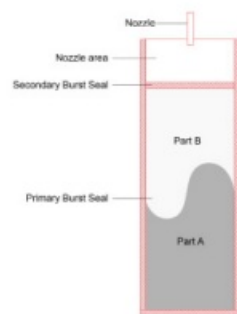
- A Electric or Pneumatic drill with 80mm (3-1/8" or 3-1/4") Drill Bit, a Vacuum cleaner and a depth measuring tool are recommended. You may also need a blow torch to dry up wet holes.
- FlexMag3
Sensor and a EZ-Out cup for installation.
- Burst Pack with adhesive 2 part liquid and a depth tool



A Electric or Pneumatic drill with 80mm (3-1/8" or 3-1/4") Drill Bit, a Vacuum cleaner and a depth measuring tool are recommended. You may also need a blow torch to dry up wet holes.



FlexMag3
Sensor and a EZ-Out cup
for installation.



Burst Pack with adhesive 2
part liquid and a depth tool



STEP-1

Using a pneumatic or electric drill, drill a 80mm (3-1/8" or 3-1/4") diameter hole, 3.5"/89mm deep. Use blow torch to dry hole if wet.



Blow Torch

FCC/IC Warning RF Exposure

This equipment complies with FCC radiation exposure limits set forth for an uncontrolled environment This equipment should be installed and operated with minimum distance 20cm between the radiator& your body. This transmitter must not be co-located or operating in conjunction with any other antenna or transmitter.

safety 2006/95/EC

EMC

- FCC: This device complies with Part 15 of the FCC rules. Operation is subject to the following two conditions: (1). This device may not cause harmful interference, and (2) this device must accept any interference received, including interference that may cause undesired operation. Changes or modifications not expressly approved by the party responsible for compliance could void the user's authority to operate the equipment.
- CE0678
- 2004/108/EC
- IC: This device complies with Industry Canada licence-exempt RSS standard(s). Operation is subject to the following two conditions: (1) this device may not cause interference, and (2) this device must accept any interference, including interference that may cause undesired operation of the device.

FlexMag3 Sensor Installation with EZ-Out: Quick Start Guide

STEP-2

Squeeze end of pouch containing Part A towards primary burst seal, applying even pressure until primary burst seal slowly ruptures allowing Part A to mix with Part B. Knead for no more than 10 seconds

STEP-3

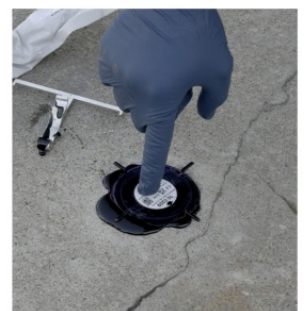
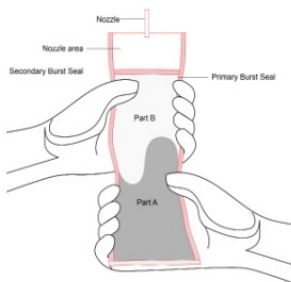
Remove cap, point pouch into the hole, squeeze pouch to burst secondary seal and pour the liquid in to the hole using depth tool to fill until adhesive just touches depth tool, 2.75" or 70mm from top of the hole.

STEP-4

Place sensor in an EZ-Out cup with label up and the arrow pointing in the direction of traffic within 15 seconds of previous step to about 1/8" or 3mm from surface.

STEP-5

Press sensor softly inside the hole till epoxy start flowing over and cover sides.



Note: Before starting the sensor installation process, please make sure to read all steps completely. Steps 2 to 5 should be completed within a total of 1 minute.

Removing the sensor from EZ-Out Cup

STEP-1

Remove excess epoxy from top of the sensor and use a pry tool or set of flathead screwdrivers to extract the sensor. The EZ-Out cup housing the sensor will remain in the ground.

STEP-2

The clip that keeps sensor locked in place could be broken in the process of removing the sensor. This is normal and a new clip should be used when re-inserting sensor.



Installing a new sensor in EZ-Out cup

STEP-1

Make sure to remove any debris from the EZ-Out cup before inserting a new sensor. The sensor will be a snug fit but easy to slide in.

STEP-2

Insert a new spare EZ-Out clip to lock sensor in place.



Sensys Networks and the Sensys Networks logo are trademarks of Sensys Networks, Inc. All other trademarks are the property of their respective owners. Information contained herein is believed to be reliable, but Sensys Networks makes no warranties as to its accuracy or completeness.

Copyright © 2023 Sensys Networks, Inc. • ALL RIGHTS RESERVED • P/N 152-240-100-016 Rev B

Documents / Resources



[SENSYS networks FlexMag3 Sensor](#) [pdf] User Guide
FlexMag3, FlexMag3 Sensor, Sensor

References

- [User Manual](#)

[Manuals+](#), [Privacy Policy](#)

This website is an independent publication and is neither affiliated with nor endorsed by any of the trademark owners. The "Bluetooth®" word mark and logos are registered trademarks owned by Bluetooth SIG, Inc. The "Wi-Fi®" word mark and logos are registered trademarks owned by the Wi-Fi Alliance. Any use of these marks on this website does not imply any affiliation with or endorsement.