



Contents [[hide](#)]

- [1 SENSTAR Avigilon Network Manager Integration](#)
- [2 Specifications](#)
- [3 Features and Benefits](#)
- [4 UNITY VIDEO USER INTERFACE](#)
- [5 SYSTEM INTEGRATION](#)
- [6 CONFIGURATION OVERVIEW](#)
- [7 Configure SMS Settings in NMS Front Panel](#)
- [8 Install NMS Watchdog](#)
- [9 Configure Unity Video](#)
- [10 Frequently Asked Questions](#)
- [11 Documents / Resources](#)
 - [11.1 References](#)



SENSTAR Avigilon Network Manager Integration



Specifications

- Product Name: Senstar Sensors with Avigilon Unity Video Integration
- Manufacturer: Senstar
- Integration: Avigilon Unity Video

Monitor and control Senstar sensors within Avigilon Unity Video

The NMS-Unity Video integration provides a software integration between Senstar perimeter intrusion detection sensors and Unity Video, avoiding the need for relay output modules and corresponding hardware intrusion panels.

Senstar's Network Manager software provides a common interface for monitoring Senstar sensors from VMS, SMS, and PSIM systems. The Network Manager Service includes functionality to integrate Senstar sensors and devices with Unity Video via its POS Transactions interface. The Network Manager software also includes a Watchdog service, ensuring that any loss of communications between the sensor network and Unity Video generates a notification.

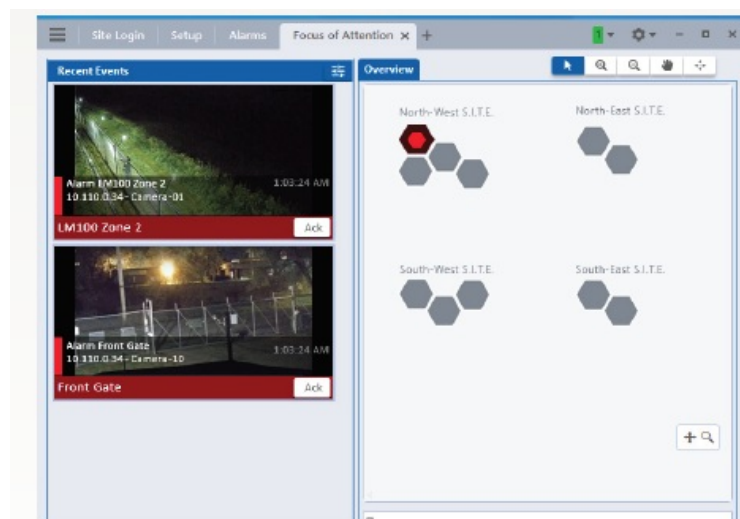
From within Unity Video, operators can:

- View sensor alarms in Alarm or Focus of Attention windows
- View the video associated with alarms
- Acknowledge alarms
- Monitor equipment faults
- Monitor communication status

Features and Benefits

- Display zone alarms, hardware diagnostic faults, and communication faults from Senstar sensors within Unity Video
- Sensor events are received as POS Transactions that can be selected for monitoring and used to trigger alarms and rules.
- Watchdog timer ensures any loss of communications between the sensor network and Unity Video generates a notification.
- Support for Network Manager redundancy

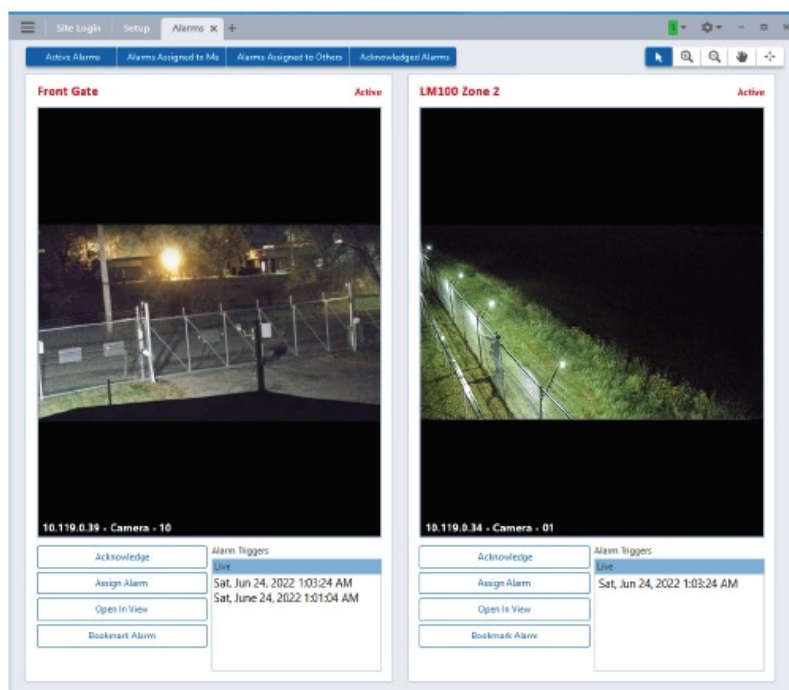
- Supported sensors include FlexZone®, FiberPatrol® FP1150, FiberPatrol® FP400, Senstar LM100, OmniTrax®, UltraWave™, UltraLink™ I/O, and XField®
- Alarm Logic Engine support
- Based on the Unity Video POS Transaction Engine (generic text interface)
- Compatible with Unity Video versions 7.14.x.x and 8.x .x.x and newer, and NMS 2.54 or newer



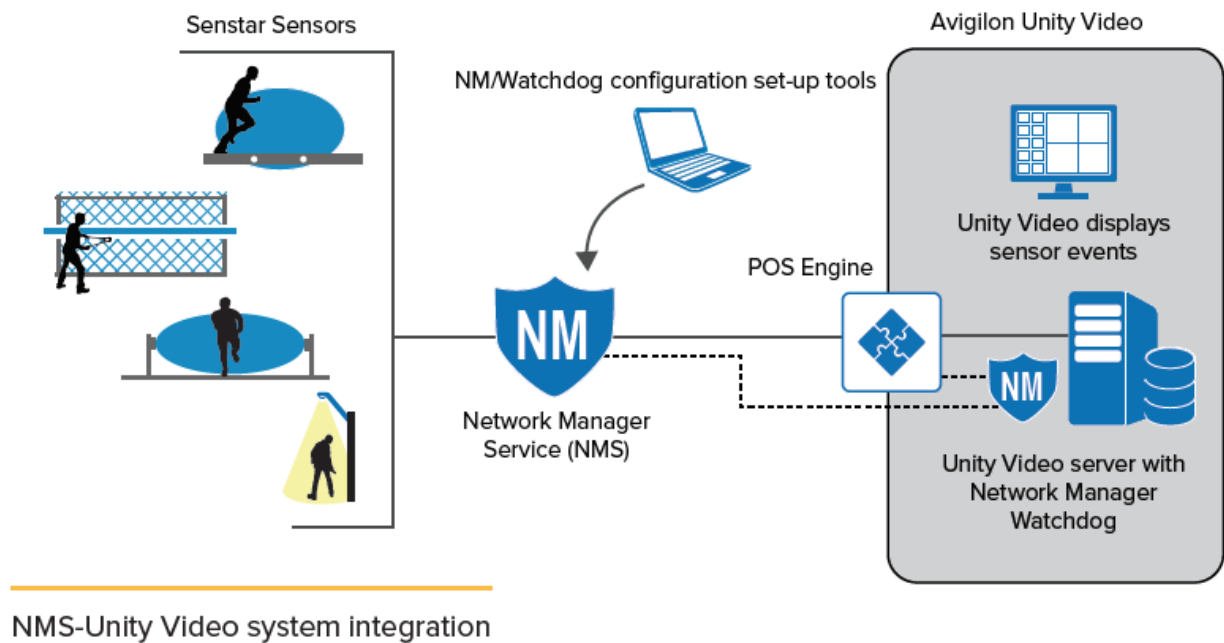
Avigilon Unity Video integrated with Senstar perimeter intrusion detection sensors

UNITY VIDEO USER INTERFACE

Senstar sensor alarms appear in Unity Video as POS Transaction events, which can be used to trigger alarms, camera callups, and rules.



SYSTEM INTEGRATION



CONFIGURATION OVERVIEW

Configuration consists of three main steps:

1. Configure the Senstar Network Manager software.
2. Install and configure Senstar's NM Watchdog software on the Unity Video server.
3. Configure the Unity Video software to accept NM events via its POS Transactions interface.

Configure SMS Settings in NMS Front Panel

1. In the NMS Front Panel, enter the SMS properties for the sensor network under the Text tab:

Parameter	Value
Server interface type, TCP addresses and ports	As required
Message Start prefix	3E
Message End delimiter	3C
Encoding	ASCII
Message Block Min Size	40
Message Block Fill	00

Configure Network Manager Service 1

Network Type: Silver Network ☐ Disable

SMS | Redundancy | UCM | Network | Nodes | NMS Link | Logging

Alarm Hold (s): 5 Queue Time (s): 0

TCP/IP | Text | Starcom

Interface
☐ Serial ☒ TCP/IP Client ☐ TCP/IP Server ☐ UDP/IP

Primary IP Address: 10 . 119 . 0 . 240 TCP Port: 811

Alternate IP Address: 0 . 0 . 0 . 0 TCP Port: 10001

☒ Keep Alive
 Message: NM 1 KA
 Period (s): 60

Message Start Prefix (hex): 3E Message End Delimiter (hex): 3C

Encoding: ☒ ASCII ☐ Unicode
 Message Block: ☒ Min Size: 20 Fill (hex): 00

Buttons: Save and Restart, Archive, Load

Input 1

NM Output: **Text** | Starcom Output

Alarm Condition
☒ Enable
 Active: 1:4:1A
 Inactive:

Supervision Condition
☒ Enable
 Active: 1:4:1S
 Inactive:

Buttons: OK, Cancel

Install NMS Watchdog

1. Install Senstar's NMS Watchdog (included in the NM software suite) on the Unity Video server.
2. In the NM Watchdog Cfg, enter the SMS properties under the SMS tab:

Parameter	Value
Server interface type, TCP addresses and ports	As required
Message Start prefix	3E
Message End delimiter	3C
Encoding	ASCII
Message Block Min Size	40
Message Block Fill	00

3. On NMS tabs (one for each NMS to be monitored):

- Enter the NMID and IP address.
- Enter a text string for the Offline state. Define strings for Online state only if you want to program something like an auto-acknowledge when the alarm goes inactive (in this case, it would still require a “purge” step in Unity Video).

Configure Unity Video

1. In Setup > POS Transactions, define a POS transaction source (one for NMS Watchdog and each NMS instance):

- Enter the IP and TCP port number to connect to Watchdog/NMS, as well as the Client connection type.

POS Transactions - P5530-VM-W1064

Transaction Sources:

- NMS 5
- NMS 1
- NMS Wdg

POS Transactions Setup

Set Transaction Source Device

Set the IP address and port for the transaction source device:

Hostname/IP Address: 10.119.0.240

Port: 815

Connection Type: ☐ Client ☒ Server

Previous Next Cancel

Close

b. Define Transaction Source Data Format:

Parameter	Value
Name	NMS
Description	NMS message interface
Transaction Start Text	>
Transaction End Text	<
Encoding	UTF-8
Filters	Remove '\00'

Set Transaction Exceptions for each Watchdog/NMS alarm:

- Enter a unique name for each alarm reported.
- Enter a text string matching the entry in NMS.

NM Watchdog Cfg

SNMS NMS Text Relay

1 2 3 4 5 6 7 8 9 10

NM Id: 1

IP Address

Primary: 127 . 0 . 0 . 1

Alternate: 0 . 0 . 0 . 0

Offline: NM 1 Offline

Online: NM 1 Online

Save and Restart Archive Load

Transaction Sources:

NMS 5
NMS 1
NMS Wdg

POS Transactions Setup

✕

Set Transaction Source Device

Set the IP address and port for the transaction source device:

Hostname/IP Address: 10.119.0.240

Port: 815

Connection Type: ☐ Client
☒ Server

Previous

Next

Cancel

Close

Configure Data Format

✕

Properties

Name: NMS
Description: NM message interface
Transaction Start Text: >
Transaction End Text: <
Encoding: UTF-8

Filters

Capture Data Load Data... Save Data...

Raw data:

Filtered data:

Remove Replace... Set as Line Break

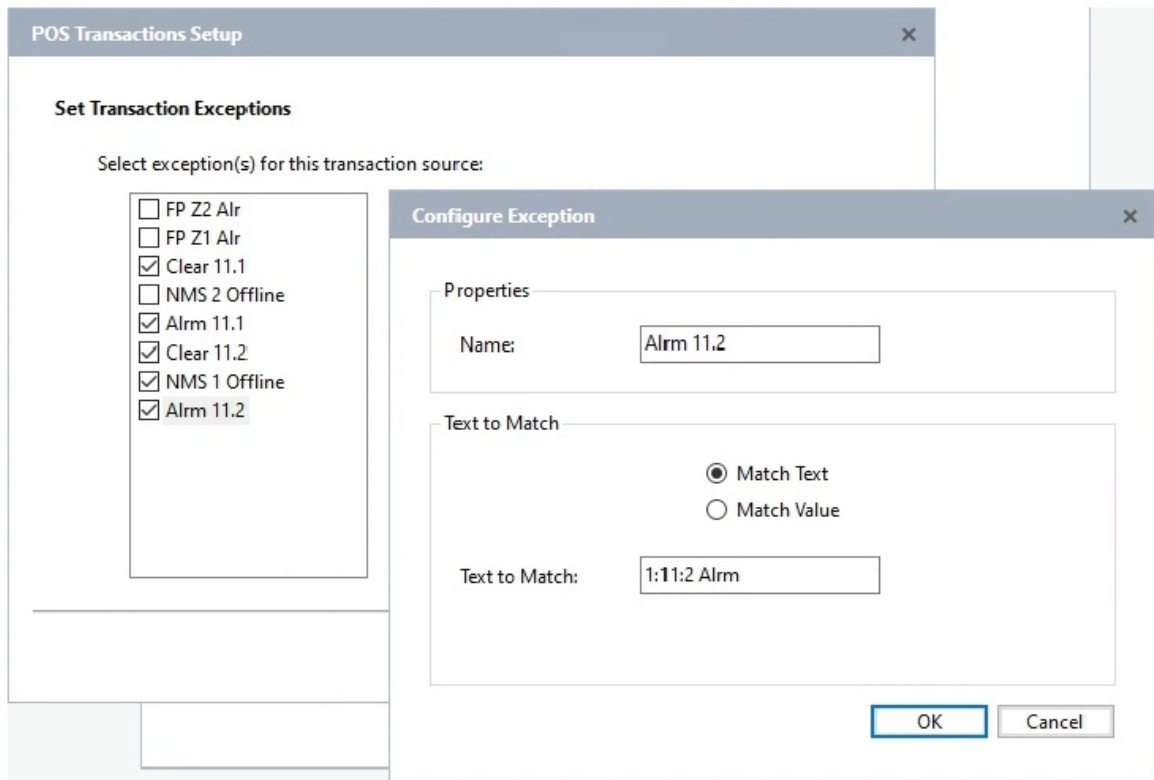
Current Filters:

Remove '\00'

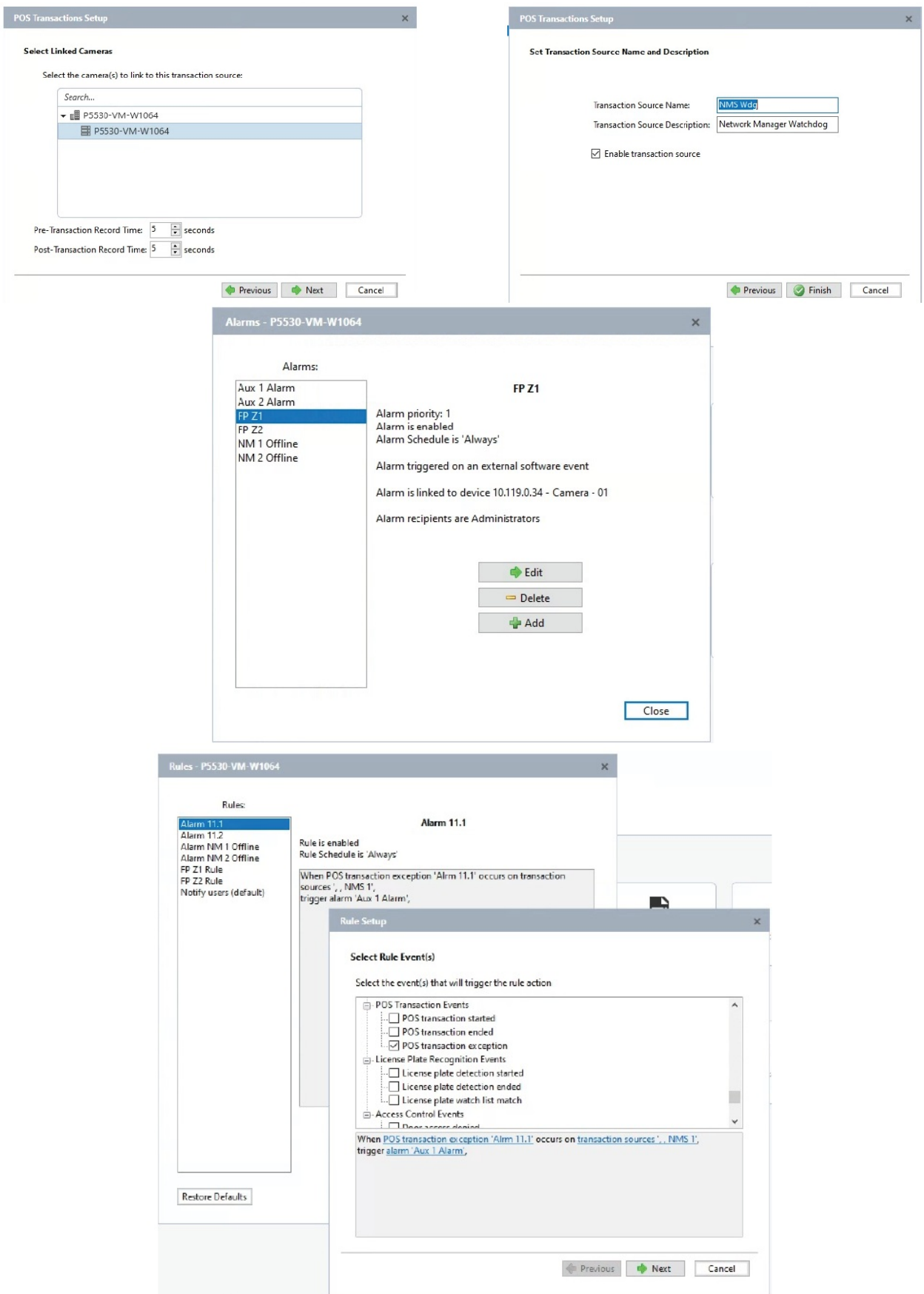
Add Filter... Remove Filter Edit Filter...

OK

Cancel



- c. Select Linked Cameras and save the transaction's name and description.
2. In Setup > Alarms, create an entry for each Watchdog/NMS alarm:
 - a. Select Alarm Trigger Source for External Software Event.
 - b. Select device to link to alarm (suggest a camera with a view of the alarm detection zone).
 - c. Select alarm recipients (users to be notified of alarm) and sound to be played when alarm is triggered.
 - d. Define Alarm properties (Display name, priority, schedule).
3. In Setup > Rules, define rules that link Transaction Exceptions to alarms (for each Watchdog/NMS alarm):
 - a. Select the Rule event to trigger the rule of the POS transaction exception:
 - Specify the transaction exception using the previously defined name.
 - Specify the transaction source using the previously defined source.
 - b. Select Action of triggering an alarm.
 - c. Select one of the alarms defined above.
 - d. Define Rule Properties (Display name, schedule).



Version: R3-E-01/24. Copyright ©2024. All rights reserved. Features and specifications are subject to change without notice. The Senstar name and logo, FiberPatrol, and FlexZone are registered trademarks of Senstar Corporation. UltraWave and the Senstar LM100 are trademarks of Senstar Corporation.

Frequently Asked Questions


Can Senstar sensors be monitored from VMS, SMS, and PSIM systems?

: Yes, Senstar's Network Manager software provides a common interface for monitoring Senstar sensors from VMS, SMS, and PSIM systems.

: What are the main steps involved in configuring the integration between Senstar sensors and Unity Video?

The main steps include configuring the Senstar Network Manager software, installing and configuring Senstar's NM Watchdog software on the Unity Video server, and configuring the Unity Video software to accept NM events via its POS Transactions interface.

Documents / Resources

	SENSTAR Avigilon Network Manager Integration [pdf] Owner's Manual Avigilon Network Manager Integration, Avigilon, Network Manager Integra tion, Manager Integration, Integration
---	--

References

- [User Manual](#)

■ SENSTAR

◆ aVIGILON, Avigilon Network Manager Integration, Integration, Manager Integration, Network Manager Integration, SENSTAR

Leave a comment

Your email address will not be published. Required fields are marked *

Comment *

Name

Email

Website

☐ Save my name, email, and website in this browser for the next time I comment.

Post Comment

Search:

Search

[Manuals+](#) | [Upload](#) | [Deep Search](#) | [Privacy Policy](#) | [@manuals.plus](#) | [YouTube](#)

This website is an independent publication and is neither affiliated with nor endorsed by any of the trademark owners. The "Bluetooth®" word mark and logos are registered trademarks owned by Bluetooth SIG, Inc. The "Wi-Fi®" word mark and logos are registered trademarks owned by the Wi-Fi Alliance. Any use of these marks on this website does not imply any affiliation with or endorsement.