



## SENSORCAN OSC13SBM 13 Gallon Sensor Trash Can User Manual

[Home](#) » [Sensorcan](#) » SENSORCAN OSC13SBM 13 Gallon Sensor Trash Can User Manual 

SENSORCAN OSC13SBM 13 Gallon Sensor Trash Can User Manual



## Contents

- 1 Features
- 2 Contents of the Box
- 3 Parts
- 4 About your SensorCan™ Trash Can
- 5 Operating Instructions
- 6 How to Insert the Wheels
- 7 How to Lock the Wheels in Place
- 8 How to Replace the AbsorbX Odor Filter
- 9 How To Use The Trash Bag Retainer Ring
- 10 General Troubleshooting Steps
- 11 Troubleshooting
- 12 Documents / Resources
  - 12.1 References
- 13 Related Posts

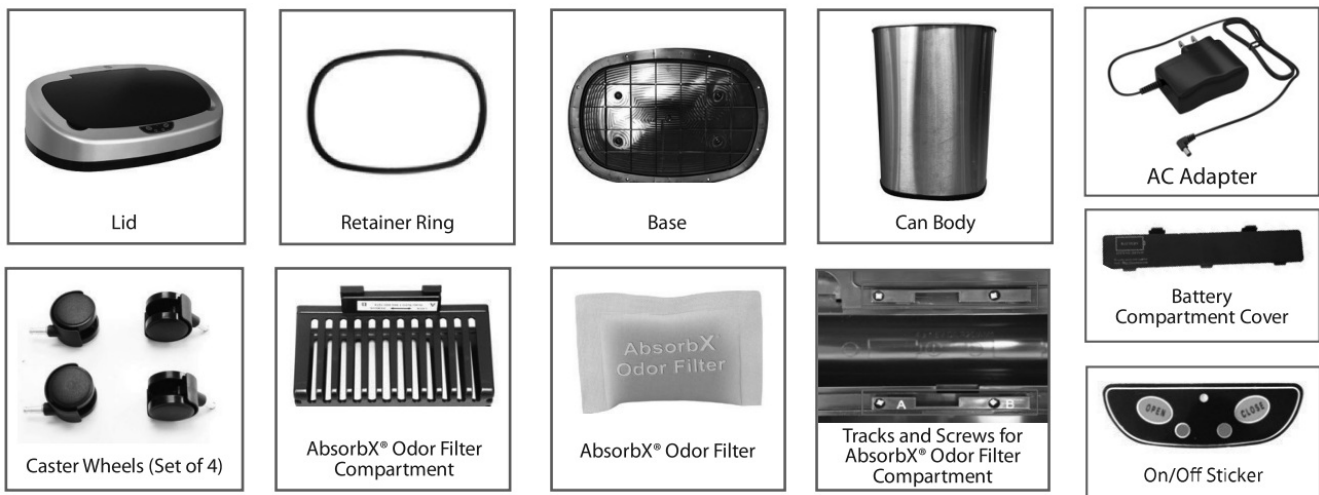
## Features

- Soft lid opening and closing
- Four removable caster wheels
- Refix™ quick opening technology
- VisioSense™ technology provides a visual alert when the lid begins to close
- Extra-wide lid opening accommodates large and bulky items
- AbsorbX™ Odor Filter System
- Air vents at the base ease removal of a full bag
- Powered by 4 “D” size batteries (not included) or optional AC Adapter

## Contents of the Box

- Sensor Trash Can Lid
- One Replaceable AbsorbX® Odor Filter
- Brushed Stainless Steel Can Body
- Trash Bag Retainer Ring
- AbsorbX Odor Filter Compartment
- User Manual

## Parts



## Attention

1. Do not submerge the lid in water as it houses the electronic control. You may clean it with a lightly dampened cloth.
2. Clean the trash can body only with products safe for use on stainless steel.
3. Do not press or force the Lid Cover to close. Lid will close automatically after your hand is removed from the sensor zone.
4. Replace batteries immediately when the indication light turns yellow/amber. This will ensure the lid continues to operate properly.
5. Avoid direct sunlight on the infrared sensor.
6. Ensure there is enough room to operate the trash can without blocking the opening and closing of the lid.
7. Do not use a power adapter that is not authorized by SensorCan; it may result in fire, electric shock or injury.
8. Do not use power adapter and battery at the same time to operate the trash can. It can only be powered by one source at a time.
9. Do not overstuff trash bag. It may cause tearing or difficulty removing.
10. Automatic parts may not be suitable for small children or pets.

## About your SensorCan™ Trash Can

The touchless sensor operation promotes a germ-free environment. The lid sensor uses Invisible and harmless, patented infrared technology for accurate and responsive lid open and close operation. There are two buttons on the front of the lid, "OPEN" and "CLOSE", to open and close the lid manually, and an ON/OFF power switch on the back of the trash can lid. The infrared sensor on the lid will automatically open the lid when your hand or object is within 6 inches/10 cm of the sensor. The lid will remain open if the sensor detects any object within its radius and will automatically close in 4 seconds after the object is withdrawn.

## VisioSense™ Indicator Light (LED Light)

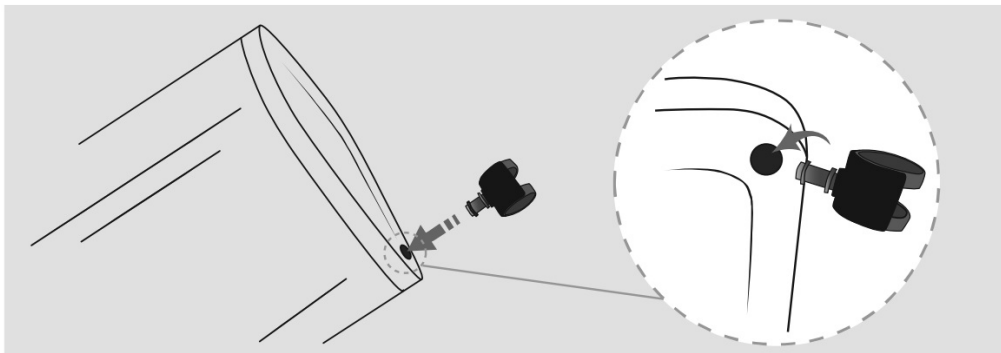
1. When there is an object in the Sensor Zone, the LED indicator Light will remain green and the Lid will remain open until object is removed from the sensor zone.
2. Once item is removed from the Sensor Zone, the LED Indicator Light will flash red to indicate that the lid will close in 6 seconds.
3. If an object is placed back into the Sensor Zone when the LED Indicator Light is flashing red, the light will turn

solid green again and the Lid will remain open.

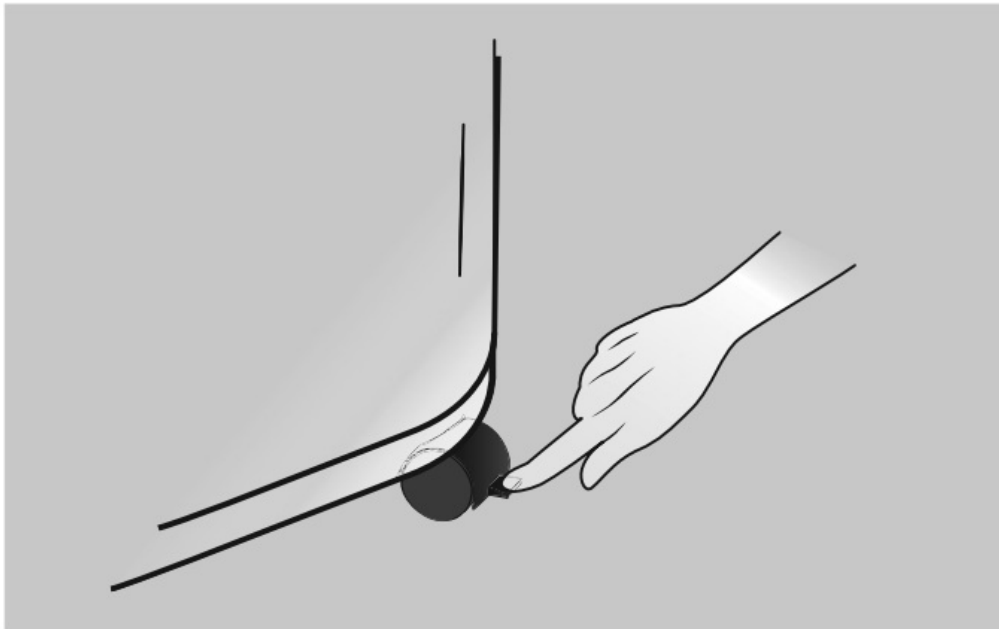
## Operating Instructions

1. Remove Lid Unit from the trash can. Open battery compartment cover to insert 4 “D” size batteries. Replace cover.
2. Insert one 13 gallon to 18 gallon trash bag through Trash Bag Retainer Ring and wrap the top part of the bag over the Ring (STEP 1 in How To Use The Trash Bag Retainer Ring). Put the Ring onto the top edge of the can body (STEP 2).
3. Place Lid Unit onto the can body and make sure it is securely attached.
4. Turn on the power switch on the back of Lid Unit. A red Indicator Light will turn on for 3 seconds. It will flash once every 3 seconds to indicate the system is on and ready to use.
5. Place hand or any object 6 inches above Infrared Sensor on the front of Lid Unit to open. When there is an object in the Sensor Zone, the LED indicator Light will remain green and the Lid will remain open until object is removed from the Sensor Zone. Once item is removed from the Sensor Zone, the LED Indicator Light will flash red to indicate that the lid will close in 6 seconds. If an object is placed back into the Sensor Zone when the LED Indicator Light is flashing red, the light will turn solid green again and the Lid will remain open.
6. If you press the open button, Lid will open, and remain open for 5 minutes before closing automatically unless you press the close button. The trash can will then resume operating in automatic mode.

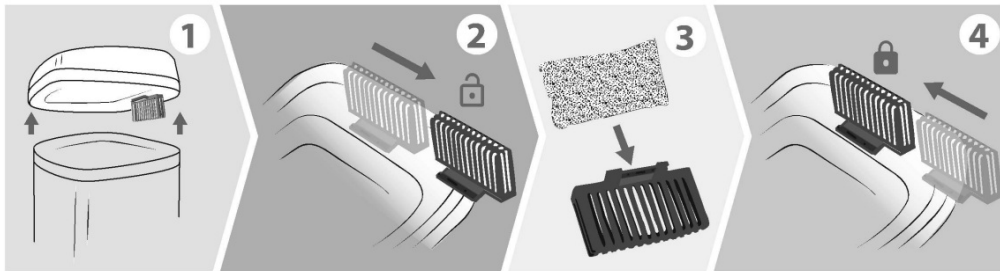
## How to Insert the Wheels



## How to Lock the Wheels in Place



### How to Replace the AbsorbX Odor Filter



### How To Use The Trash Bag Retainer Ring



### General Troubleshooting Steps

1. Turn power switch to "Off," remove battery or AC power adapter, then rub and wipe clean the sensor area with a soft damp cloth and dry it immediately with a soft dry cloth. Re-insert batteries or plug in AC adapter (DO NOT USE battery and AC adapter at the same time).
2. Place trash can in an open area where nothing is blocking or within 10 inches of the sensor eye. Make sure no sunlight or direct light shines on the sensor. Turn on the power and try opening lid again.
3. If trash can is still not working correctly, remove the batteries or AC adapter. Let trash can sit for at least 2 hours to reset. Try opening lid after reset.

If your trash can lid is still not working after trying these steps, please contact us at: 1-844-660-7978 for warranty

service.

## Troubleshooting

Problem	Solution
The trash can is brand new, and only works occasionally	Peel off the thin, transparent protector/sticker on top of the sensor eye. If the lid still doesn't work regularly, try a new set of batteries. Then follow the General Troubleshooting Steps.
The lid stays open or lid opens and closes continuously	The sensor eye may be affected by dirt, stain, dust, moisture or reflection. Move the trash can to a different location or turn the trash can slightly so that the sensor faces another direction, and follow the General Troubleshooting Steps.
Grinding noise when the lid opens/closes	This can be caused by broken gears <b>or</b> lid hinge. <ul style="list-style-type: none"><li>• Check for damage on the hinges that connect to the lid.</li><li>• Follow the General Troubleshooting Steps.</li><li>• Contact us at 14344660-7978 for warranty service</li></ul>
The lid does not open/close. Important Do not use batteries and the AC power adapter at the same time. It can only be powered by one source at a time.	<p>If you are using Batteries:-</p> <ul style="list-style-type: none"><li>• Ensure batteries are inserted correctly and close the battery cover firmly.</li><li>• Turn power switch to Off position to see if the indication light is visible</li></ul> <p>If you are using AC Power Adapter:-</p> <ul style="list-style-type: none"><li>• Unplug the adapter and insert new alkaline batteries to see if the lid works on battery.</li><li>• If the lid works with batteries, the AC adapter may be broken</li></ul>
I wave my hand over the sensor eye, but the lid does not open	It is not a motion sensor. Hold your hand or object steadily (do not wave your hand) within 4-6 inches over sensor eye for it to detect and open.

### Register your Product

Go to [sensorcan.com](https://sensorcan.com) to register your product for simple warranty service and to receive product updates and special offers. Product Model # OSC13SBM

### We're here to help!

If you have any questions or concerns about this product, please contact Customer Support for immediate assistance. You can reach us at 1-844-660-7978. Your 100% satisfaction is our #1 goal!



---

## Documents / Resources



[SENSORCAN OSC13SBM 13 Gallon Sensor Trash Can](#) [pdf] User Manual  
OSC13SBM 13 Gallon Sensor Trash Can, OSC13SBM, 13 Gallon Sensor Trash Can, Gallon Sensor Trash Can, Sensor Trash Can, Trash Can

## References

- [User Manual](#)

[Manuals+](#). [Privacy Policy](#)

This website is an independent publication and is neither affiliated with nor endorsed by any of the trademark owners. The "Bluetooth®" word mark and logos are registered trademarks owned by Bluetooth SIG, Inc. The "Wi-Fi®" word mark and logos are registered trademarks owned by the Wi-Fi Alliance. Any use of these marks on this website does not imply any affiliation with or endorsement.