




SensorBlue WS23 Keychain Hygrometer User Guide

[Home](#) » [SensorBlue](#) » SensorBlue WS23 Keychain Hygrometer User Guide 

Contents

- [1 SensorBlue WS23 Keychain Hygrometer](#)
- [2 Technical Spec](#)
- [3 FCC Caution](#)
- [4 Documents / Resources](#)
 - [4.1 References](#)

SensorBlue

SensorBlue WS23 Keychain Hygrometer



Before using the product, here are 2 important points to keep the sensor accurate.

1. The sensor is an accurate humidity and temperature MEMS sensor. Please don't put it in the water.
2. The sensor detects the air temperature and humidity through the hole in the back, please don't cover it.



Please follow the following steps to use the product

1. Please scan the QR code on the box or on the manual to download the APP.
2. Turn on the APP



3. Take off the battery sleeve, and then the sensor starts to work.
4. Tap the "Add device" Or "+" to add the hygrometer.



5. The APP is going to pair the device. After you press the button on the product, it will connect automatically. Some models don't have the button, for those models, please tap "Pairing by device name" and then choose "Thermobeacon"

Note: After pairing your smart hygrometer with the SensorBlue APP, you can use the APP to check the temperature and humidity.

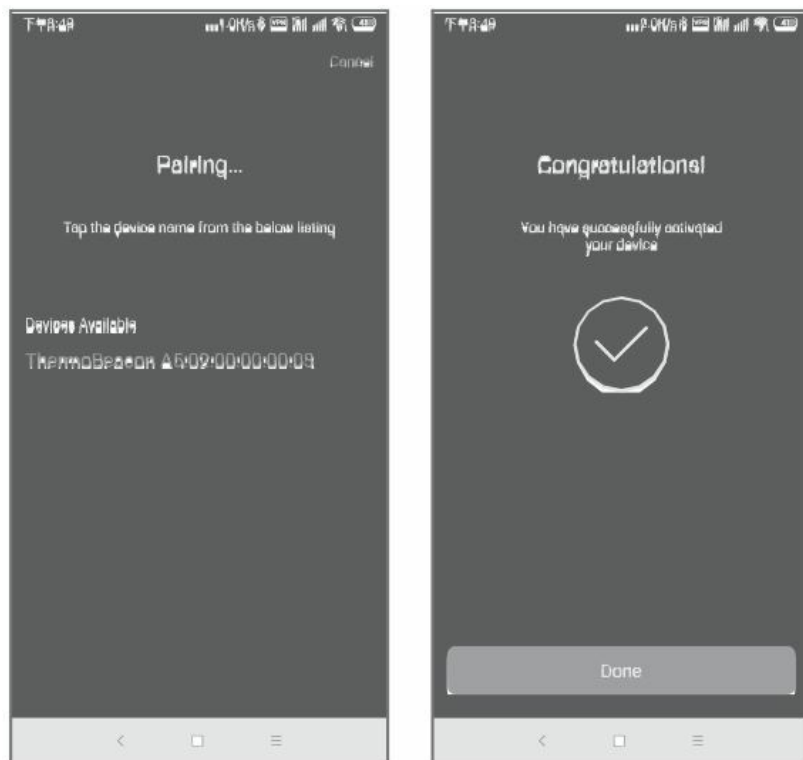
6. Tap the camera icon to take photos of the place where you put the sensor. You can set up the desired alert temperature or humidity. When you connect the hygrometer with the APP, you can read the instant temperature data and humidity data.



7. For some of the models with the buzzer alert on the device, if the temperature or humidity is out of range, it will have the alert on the device. If you need to check the graphic or history, tap the temperature number or humidity number directly. Then you will see them.

Follow the below steps to change the battery

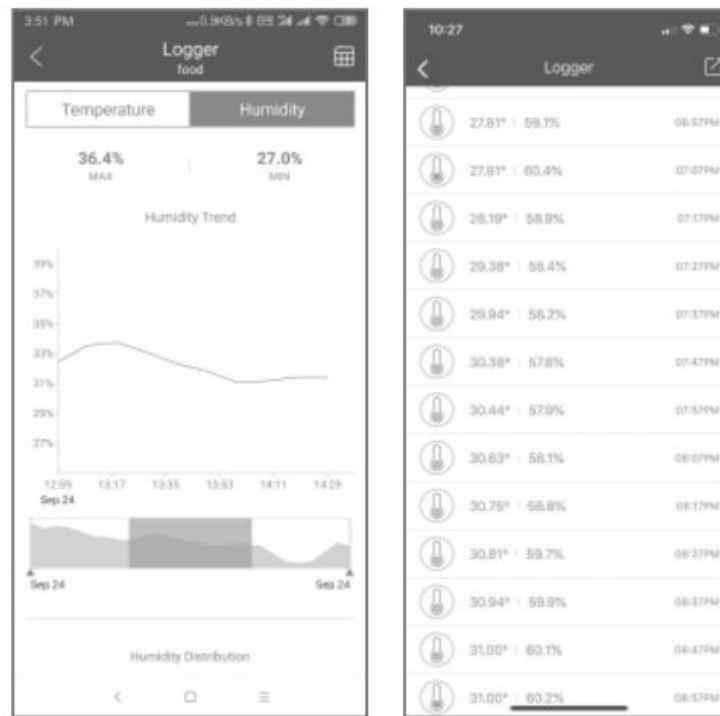
1. Clean your hands to make sure no water or oil.



2. Hold the unit, and pull it towards the earth. (like the attached picture).
3. Push the battery out and replace a new AAA battery.



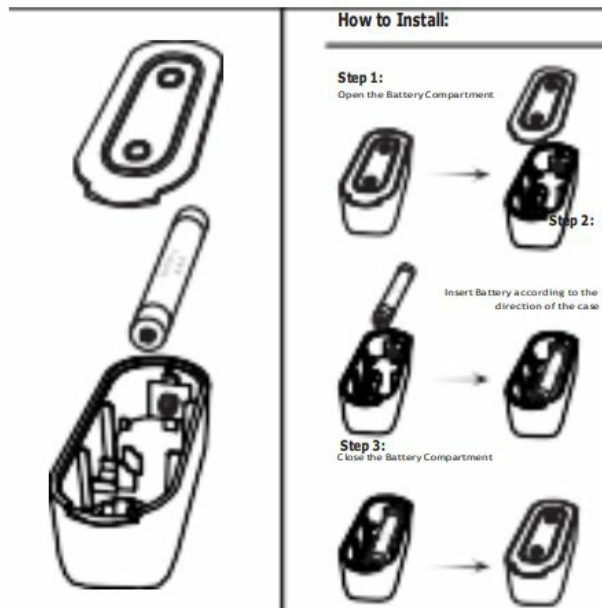
4. Turn on the APP, and then press the key on the PCB board. You will see the LED flash.
5. After you see the temperature and humidity data appear again. Clip the plastic case back.



Technical Spec

Temperature Range	-20~65°C(-4~150°F)
Humidity Range	0-100%RH
Accuracy	Temp: +-0.5°C/1°F Humidity: +-5.0%
Wireless Range	50M
Free APP Control	Yes
Sensor Type	MEMS
Materials	ABS
Battery	1*AAA
Alarm	NO
Battery Life	About 365 Days

Follow the below steps to change the battery.



FCC Caution

Any Changes or modifications not expressly approved by the party responsible for compliance could void the user's authority to operate the equipment. This device complies with part 15 of the FCC Rules. Operation is subject to the following two conditions: (1) This device may not cause harmful interference, and (2) this device must accept any interference received, including interference that may cause undesired operation.

IMPORTANT NOTE

Note: This equipment has been tested and found to comply with the limits for a Class B digital device, according to part 15 of the FCC Rules. These limits are designed to provide reasonable protection against harmful interference in a residential installation. This equipment generates, uses and can radiate radio frequency energy and, if not installed and used under the instructions, may cause harmful interference to radio communications. However, there is no guarantee that interference will not occur in a particular installation. If this equipment does cause harmful interference to radio or television reception, which can be determined by turning the equipment off and on, the user is encouraged to try to correct the interference by one or more of the following measures:

- reorient or relocate the receiving antenna.
- Increase the separation between the equipment and the receiver.
- Connect the equipment to an outlet on a circuit different from that to which the receiver is connected.
- Consult the dealer or an experienced radio/TV technician for help.

FCC Radiation Exposure Statement

This equipment complies with FCC radiation exposure limits set forth for an uncontrolled environment. This equipment should be installed and operated with a minimum distance of 20cm between the radiator & your body.

Documents / Resources



[SensorBlue WS23 Keychain Hygrometer](#) [pdf] User Guide
WS23 Keychain Hygrometer, WS23, Keychain Hygrometer, Hygrometer

References

- [User Manual](#)