


# SENSOR PARTNERS IS-40-X5-S2 Capacitive Sensors Instruction Manual

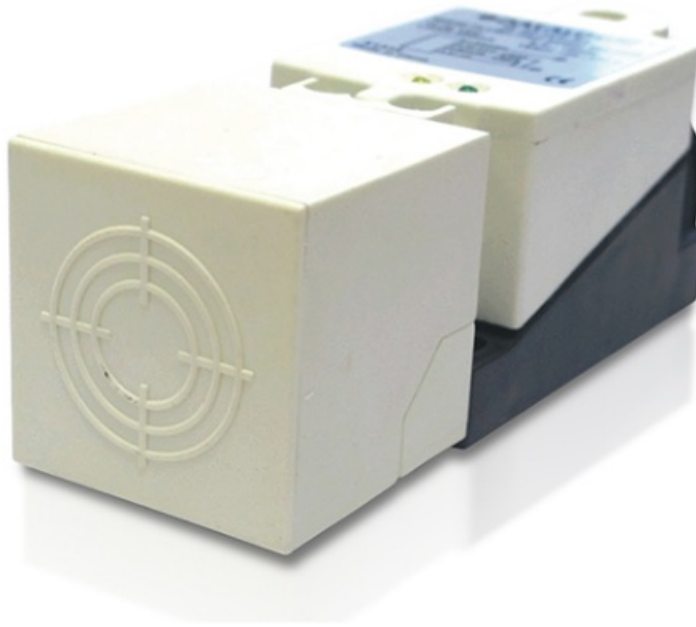
[Home](#) » [Sensor Partners](#) » **SENSOR PARTNERS IS-40-X5-S2 Capacitive Sensors Instruction Manual** 

## Contents

- [1 SENSOR PARTNERS IS-40-X5-S2 Capacitive Sensors](#)
- [2 CONNECTIONS](#)
- [3 ASSEMBLY](#)
- [4 Frequently Asked Questions](#)
- [5 Documents / Resources](#)
  - [5.1 References](#)



**SENSOR PARTNERS IS-40-X5-S2 Capacitive Sensors**



## **INFORMATION FOR INDUCTIVE, MAGNETIC AND CAPACITIVE SENSORS**

THESE SENSORS ARE NOT SAFETY DEVICES, THEREFORE THEY CANNOT BE USED TO PREVENT INJURIES TO PERSONS, DAMAGES, INDUSTRIAL DAMAGES, OR ACCIDENTS.

## **CONNECTIONS**

1. Do not exceed the voltage limits. For DC sensors, use stable tension.
2. Do not connect the sensor's power supply cables downstream from other devices and make sure they are directly connected to the mains.
3. If the power supply source is a switching voltage regulator, connect the FG (Frame Ground) terminal to the ground.
4. Connect to the ground the FG (Frame Ground) terminal and all metallic parts of every industrial machinery or not if a sensor is used in it.
5. Do not use the sensors near electromagnetic or high-frequency fields.
6. The cables of sensors must be separate from the power supply cables, the engine cables, the inverters cables, or any other electromagnetic device because induction noise could cause malfunction or damage to the sensors. Separate the wires of the sensor from the above-indicated lines and then insert the wires into an earthed metal conduit.
7. After making all operations mentioned in the above point 6, if inductive interference exists, an adequate transient suppression filter must be used on the power supply line in proximity to the sensor.
8. Do not extend the supplied sensor cable length. If a cable extension is made, the manufacturer will not be liable for the malfunction of the sensors.
9. The output signal of a sensor cannot be used during the start-up delay (not more than 300 mS).
10. Several sensors should not be connected in series, whereas several sensors can be connected in parallel.

## **ASSEMBLY**

1. For correct assembly and alignment, all the accessories supplied with the sensor must be used.

2. When available, to regulate the sensitivity adjustment trimmer use a suitable screw-driver without exerting excessive force. Only for capacitive sensors: The distance could change according to temperature variations. To increase the sensitivity twist the trimmer clockwise, to decrease do it clockwise.
3. Do not turn too much-fixing screws or nuts to avoid electrical or mechanical damage.
4. Mounting sensors side by side, leave an appropriate place between them to avoid mutual interference.
5. Do not pull the connection cable of the sensor. When the conditions of use result to be too hard (in places not protected from shocks or subjected to movements) use a protective sheath.
6. Avoid continuous movements between the sensor and its cable.
7. Protect the sensitive surface of the sensor from shocks, and mechanical pressures to avoid irreparable damage.
8. Install the sensor being careful that metallic (or of any other material) shavings shall not settle on the sensitive part of the sensor.
9. Do not use the sensors in the presence of organic or liquid solvents or any kind of acid.
10. Do not use the sensors outdoors without adequate protection.
11. Do not exceed the indicated temperature limits.
12. Do not subject the appliance to strong vibrations or to shocks that can damage the sensor or harm its impermeability.
13. Do not use the sensor to detect objects in water or in the rain.

The manufacturer is not liable for the improper use of the product. Any use and/or application which are not provided for by DATALOGIC documentation must be previously and directly authorized by the same manufacturer.

**THESE SENSORS ARE NOT SAFETY DEVICES, THEREFORE THEY CANNOT BE USED TO PREVENT INJURIES TO PERSONS, DAMAGES, INDUSTRIAL DAMAGES, OR ACCIDENTS.**

## Frequently Asked Questions

### **Q: Can these sensors be used as safety devices?**

A: No, these sensors are not designed for safety applications and cannot prevent injuries or accidents.

### **Q: What should I be cautious about when connecting the sensors?**

A: Ensure that you do not exceed the voltage limits and avoid connecting the power supply cables downstream from other devices.

### **Q: How should I adjust the sensitivity of the sensors during assembly?**

A: Use the sensitivity adjustment trimmer provided with the sensor for proper regulation.

## Documents / Resources



[SENSOR PARTNERS IS-40-X5-S2 Capacitive Sensors](#) [pdf] Instruction Manual  
IS-40-X5-S2 Capacitive Sensors, IS-40-X5-S2, Capacitive Sensors, Sensors

## References

- [User Manual](#)

[Manuals+](#), [Privacy Policy](#)

This website is an independent publication and is neither affiliated with nor endorsed by any of the trademark owners. The "Bluetooth®" word mark and logos are registered trademarks owned by Bluetooth SIG, Inc. The "Wi-Fi®" word mark and logos are registered trademarks owned by the Wi-Fi Alliance. Any use of these marks on this website does not imply any affiliation with or endorsement.