

SensoIRIS
MCP150
Addressable
Manual Call
Point



SensoIRIS MCP150 Addressable Manual Call Point Installation Guide

[Home](#) » [SensoIRIS](#) » [SensoIRIS MCP150 Addressable Manual Call Point Installation Guide](#) 

Contents

- [1 SensoIRIS MCP150 Addressable Manual Call Point](#)
- [2 Installation Instructions](#)
- [3 TECHNICAL SPECIFICATIONS](#)
- [4 STRUCTURE](#)
- [5 Installation Instructions](#)
- [6 Documents / Resources](#)
 - [6.1 References](#)

SensoIRIS

SensoIRIS MCP150 Addressable Manual Call Point



Installation Instructions

ATTENTION: SensolRIS MCP150 must be connected only to fire panels, which support TTE communication protocol!

General Description

The addressable manual call point SensolRIS MCP150 is designed for application in addressable fire alarm systems, which support TTE communication protocol. The call point has a built-in isolator module which when used allows continuous operation of the loop in case of short circuit and without need of using additional isolator modules.

SensolRIS MCP150 is powered on from the fire panel and can be controlled via the communication protocol.

Working Principle

In stand-by mode, the resettable (flexible) call point element is in a middle position and the LED is off.

When pressed on, the resettable element is moving down and a color strip is shown on at its upper side. The call point is in “Fire alarm” condition and the LED is on.

The resetting of the flexible element back in stay-by mode is done with the special key tool – fix the long side of the tool at the call point bottom side and push up until flexible element moves up in middle position – a click is heard.

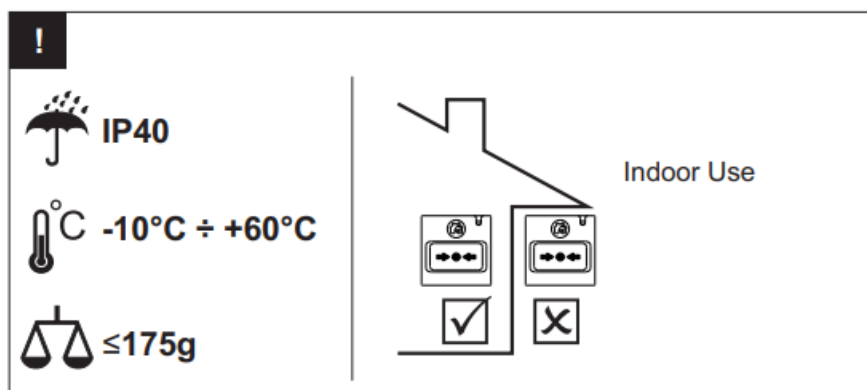
Testing the Call Point Operation

Isolate the fire alarm system before testing. Use the special tool to test the call point operation function ability – insert the tool in the “Test” hole and push up to test. The tool moves the flexible element up and thus operates the call point. The LED will light up while the call point is in test mode.

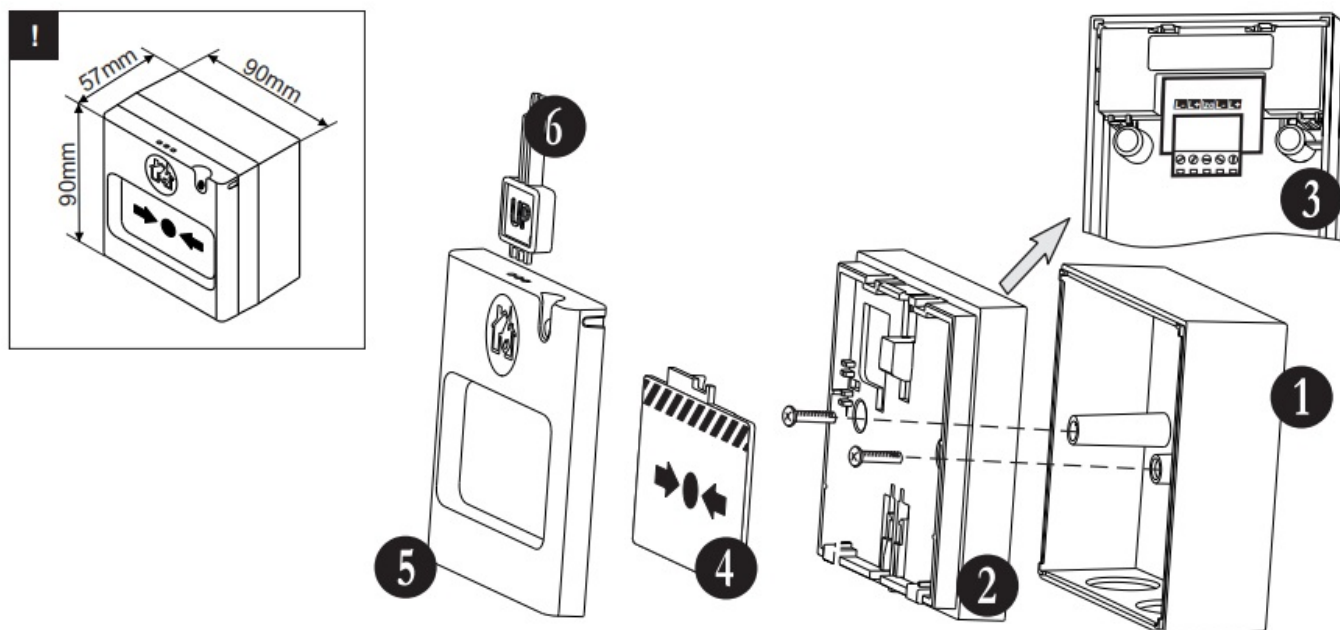
TECHNICAL SPECIFICATIONS

- Operating voltage 15÷32VDC
- Current consumption without communication (max). . . . 125µA@27VDC
- Current consumption with communication (max) 160µA@27VDC
- Current consumption in Fire mode 3mA
- Installation wires 0.4mm² ÷ 2.0mm²
- Relative humidity. ≤93%@+40°C
- Material (plastic), color ABS, red/rojo/червен
- Type (according EN 54-11, 17) Тип (съгласно EN 54-11, 17) A
- Type of the frangible element resettable (flexible) / recuperable / възстановяем
- Indication “Fire alarm”. red LED/diodo LED rojo/червен светодиод
- Dimensions 90x57x90mm

Installation

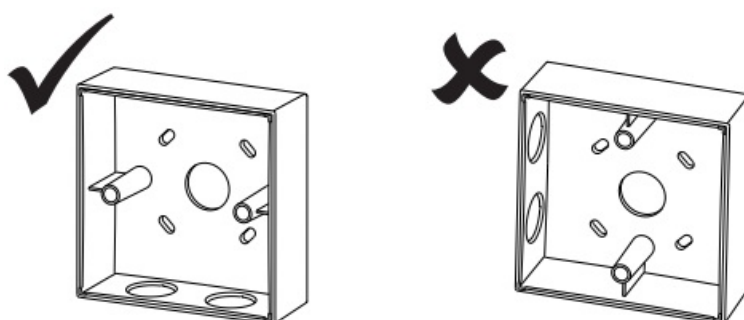


STRUCTURE

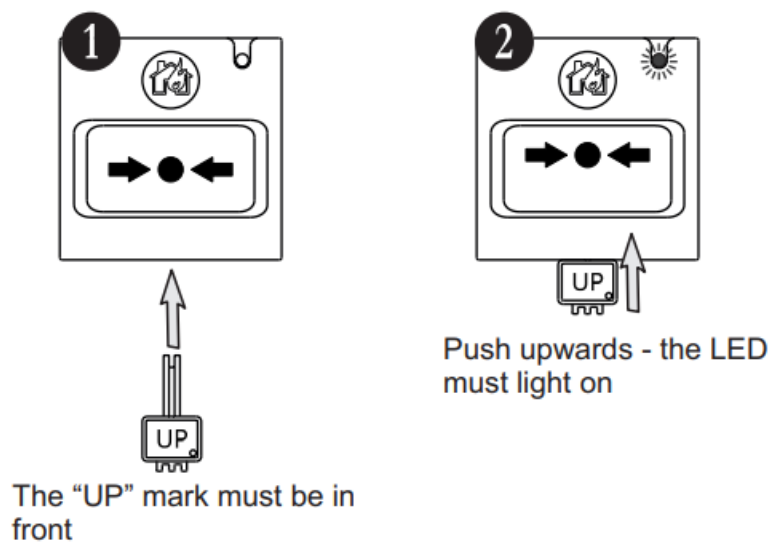


1. surface mounting box;
2. carrier unit;
3. PCB and addressable module for manual call point with row terminals (mounted on the back of the carrier unit);
4. resettable (flexible) element;
5. cover;
6. tool for opening, testing and resetting of the flexible element in stay-by mode (use the tool as shown on the picture – the “UP” mark must be in front).

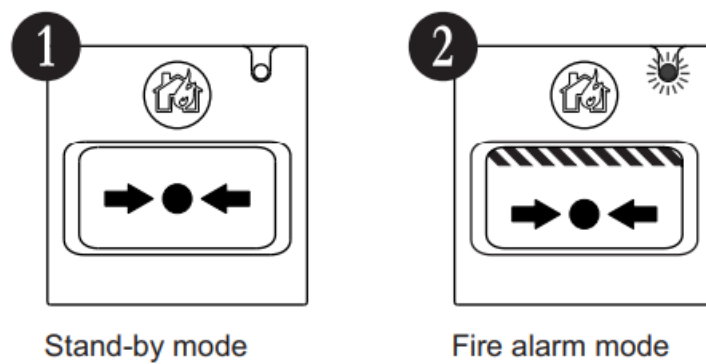
Surface mounting position



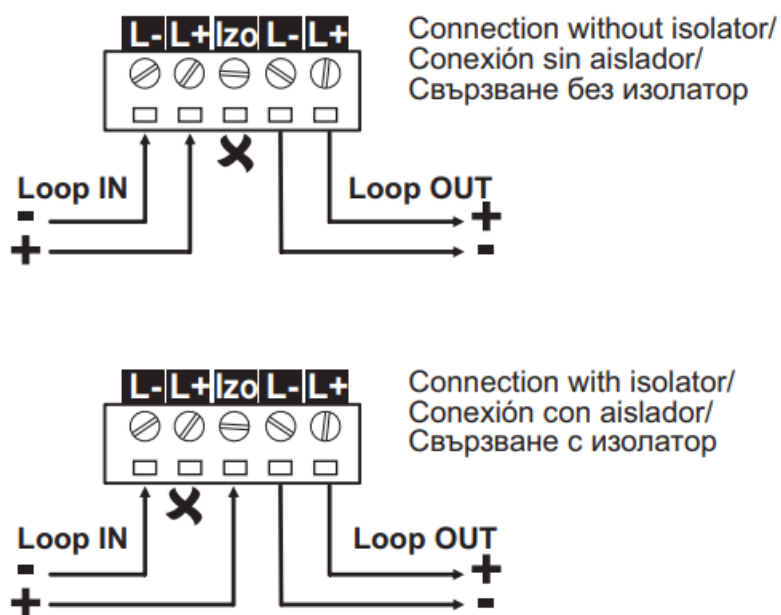
Testing the operation



LED Indication



Connection to an addressable panel

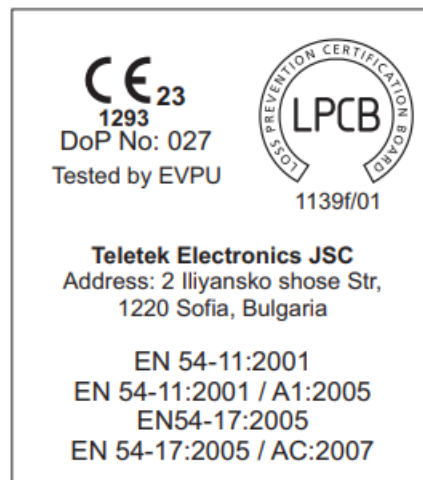


Installation Instructions


Attention: Power off the loop circuit before installing the SensolRIS MCP150!

1. Pick up the cover and take out the kit elements.

2. Mount the box as observe the knockout holes – never locate them at left or right side.
3. Take the cover and with the special tool remove the carrier unit – use the short side of the tool. As observe the location of the “Up”mark to be in front fix the short side to the holes at the upper side of the call point. Press down and pull out the cover from the carrier unit.
4. Remove the flexible element from the carrier unit – pick up the bottom side of the element and pull out .
5. Set the addressable module address using SensolRIS Programmer or directly from fire panel. The address must be in the range from 1 to 250.
6. Connect the loop wires to the call point terminals – see the connection diagram. Attention: When you use the integrated short circuit isolation module connect one of the “+Loop” loop lead to the “Izo” terminal of the call point.
7. Place the carrier unit over the mounting box and use the supplied in the kit screws to fix the parts together.
8. Place back the flexible element to the carrier unit.
9. Mount the cover.
10. Test the call point functionality.



Documents / Resources

	<p>SensolRIS MCP150 Addressable Manual Call Point [pdf] Installation Guide MCP150 Addressable Manual Call Point, MCP150, Addressable Manual Call Point, Manual Call Point, Call Point, Point</p>
---	--

References

- [User Manual](#)

Manuals+. Privacy Policy

This website is an independent publication and is neither affiliated with nor endorsed by any of the trademark owners. The "Bluetooth®" word mark and logos are registered trademarks owned by Bluetooth SIG, Inc. The "Wi-Fi®" word mark and logos are registered trademarks owned by the Wi-Fi Alliance. Any use of these marks on this website does not imply any affiliation with or endorsement.