



[Home](#) » [SENSOCON](#) » **Sensocon WM Series Wireless Humidity Plus Temperature Sensor User Manual** 



**User's Manual for WS and WM Series DataSling™  
LoRaWAN® Wireless Sensors**



## Contents [ [hide](#) ]

- 1 [Product Description / Overview](#)
- 2 [Specifications](#)
- 3 [Installation Roadmap](#)
- 4 [Installation](#)
- 5 [Configuration](#)
- 6 [Battery Information](#)
- 7 [Troubleshooting Guide](#)
- 8 [Customer Support](#)
- 9 [Compliance and Safety Precautions](#)
- 10 [Legal Notices](#)
- 11 [Limited Warranty](#)
- 12 [Revision History](#)
- 13 [Documents / Resources](#)
  - 13.1 [References](#)

## Product Description / Overview

### Product Overview

This section introduces the sensor, highlighting its key functions and applications. The sensor is part of a wireless end-to-end solution designed for monitoring environmental parameters such as temperature, humidity, differential pressure and more. Its low power consumption and long-range communication capabilities make it ideal for many applications, including pharmaceuticals, HVAC, industrial settings, greenhouses, cleanrooms and others.

### Key Features

**Wireless Connectivity:** Powered by two CR123A lithium batteries, Sensacon® DataSling™ Wireless Sensors leverage LoRaWAN® (Long Range Wide Area Network) technology for long-range, low-power communication with typical battery life 5+ years, dependent upon settings.

**Single or Multi-Parameter Monitoring:** Offered as a single variable or multi-variable unit capable of measuring multiple environmental factors such as temperature, humidity, differential pressure, current/voltage input and more in one package.

**Easy Integration:** Ideal for use with the Sensacon Sensograf™ cloud-based platform,

DataSling WS & WM Series Sensors are also compatible with existing 3rd party LoRaWAN gateways and network servers, offering seamless integration into various monitoring systems.

**Scalable Design:** Suitable for small to large-scale deployments, with flexible configuration options to suit different operational needs.

**Data Accuracy and Reliability:** High-precision sensors ensure accurate data collection for reliable monitoring and control of environments.

## Applications

**Pharmaceuticals:** Ensure compliance with stringent environmental standards by monitoring and recording environmental parameters in production and storage areas.

**HVAC Systems:** Optimize energy usage by providing real-time data on system performance.

**Industrial Monitoring:** Track critical conditions in equipment, manufacturing, and storage, reducing downtime through predictive maintenance alerts.

**Cleanrooms:** Maintain controlled environments by monitoring and recording temperature, humidity, and many other variables to prevent contamination.

**Greenhouses:** Provide precise monitoring to optimize growing conditions, enhancing crop quality and yield while reducing water and energy consumption. User alerts ensure rapid response to environmental changes.

## Benefits

**Enhanced Operational Efficiency:** Helps reduce energy consumption and optimize environmental conditions.

**Regulatory Compliance:** Supports compliance with industry standards by providing accurate, real-time environmental data.

**Reduced Initial Costs:** Affordable as single devices, multi-variable units reduce the already low acquisition cost.

Little to no wiring is required and transmission automatic starts upon applying power, reducing installation time.

**Ongoing Cost Savings:** Minimizes maintenance costs and reduces downtime with predictive alerts and remote monitoring capabilities.

**Scalable Solutions:** Suitable for diverse applications, from small-scale setups to complex, multi-site deployments.

# Specifications

## Detailed Technical Specifications

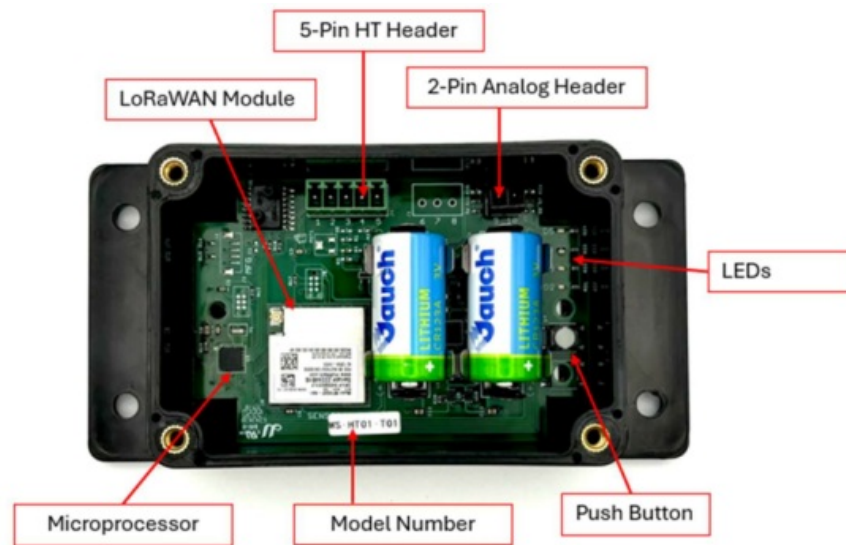
Weight	7 oz
Enclosure Rating	IP 65
Operating Temperature	-40° to 149°F (-40 to 65°C) -4° to 149°F (-20 to 65°C) differential pressure models
Antenna	External Pulse Larsen W1902 (short) Optional External Pulse Larsen W1063 (long)
Battery Life	5+ Years
Minimum Interval	10 minutes
Wireless Technology	LoRaWAN® Class A
Wireless Range	Up to 10 miles (clear line-of-sight)
Wireless Security	AES-128
Max Receive Sensitivity	-130dBm
Max Transmit Power	19dBm
Frequency Bands	US915
Battery Type	CR123A (x2) Lithium Manganese Dioxide (Li-MnO <sub>2</sub> )

**Figure 1:** General Specifications

Unit-level specifications can be found on their respective datasheets at [www.sensocon.com](http://www.sensocon.com)

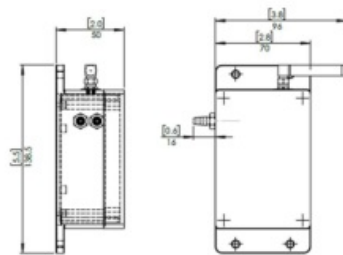
## Physical Dimensions and Diagrams

### Internal Components

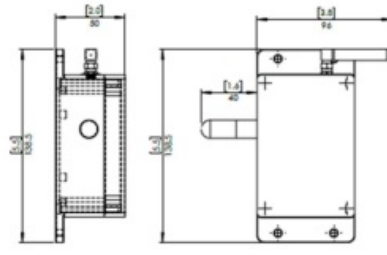


**Picture 1: Internal Components**

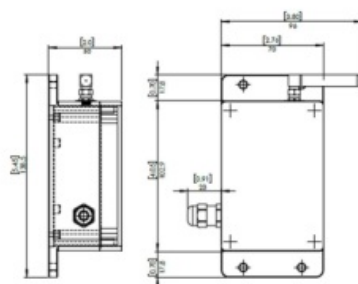
## Dimensional Drawings



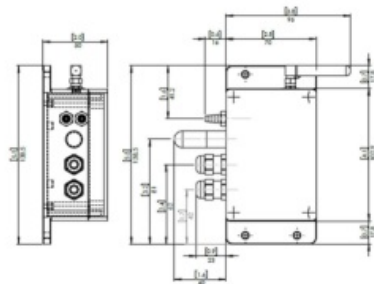
### Drawing 1: Housing with Barbed Fittings



**Drawing 2: Housing with Attached RH/Temp Probe**



### Drawing 3: Housing with Cable Gland



**Drawing 4: Multivariable Housing with (2) Barbed Fittings, (1) RH/Temp Attached Probe, & (2) Cable Glands**

## Installation Roadmap

There are three common use cases that determine how best to install a private LoRaWAN network, depending upon where the hardware is purchased from and what platform is being used for device/data management.

1. Sensors and gateway hardware purchased from Sensicon, with a Sensograf subscription.

- a. Gateway and platform are pre-provisioned. No further programming or settings changes should be needed. Simply power gateway, then sensors, and check platform for successful JOIN.
2. Sensors and gateway purchased from Sensograf, with a 3rd party platform subscription
  - a. The gateway will be provisioned to recognize the sensors. Platform provider will need to supply APPKEY and APP/JOIN EUI information. Payload information is listed on page 11 and 12 of this manual to assist with ensuring that the 3rd party platform recognizes the transmitted data.
3. Sensors and gateway purchased from 3rd party, with Sensograf 3rd party subscription
  - a. Hardware provider will need to provide the DEV EUI from the hardware, as well as Gateway EUI information so that the platform can be set up.

### End-to End Installation – Sensograf Platform Subscriber

The sequence shown below is the standard sequence of full end-to-end installation of the sensor. Additional steps within each sequence are provided in the next sections.

**NOTE:** registering the device, whether sensor or gateway, on Sensograf is NOT needed if purchased from Sensococon.

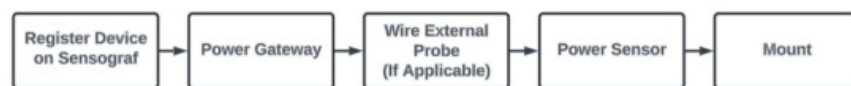


Figure 2: End-to-End Installation of Sensococon-Supplied Sensor, Gateway, & Sensograf Platform

### End-to End Installation – 3rd Party Platform Subscriber

To use a 3rd party platform with Sensococon wireless sensors, you will need the App EUI and App Key from the platform provider, in addition to gateway-specific settings. Please refer to gateway and platform manuals for detailed instructions.

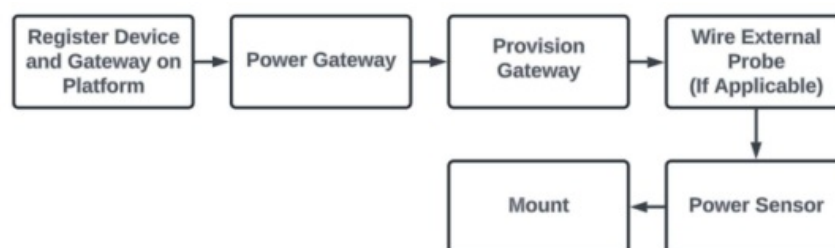


Figure 3: End-to-End Installation of Sensococon Sensor with 3<sup>rd</sup> Party Gateway & Platform

## Installation

## Unpacking and Inspection

Before installing the sensor, carefully unpack and inspect the device and all included components. Ensure that no parts were damaged during shipping.

### Included Components:

- LoRaWAN Sensor
- 2x CR123A Battery (pre-installed with insulated pull tabs)
- Quick Start Guide
- Enclosure Mounting Screws (#8 x 1" self-tapping)

## Registering Device, Connecting to Gateway & Sensograf Platform

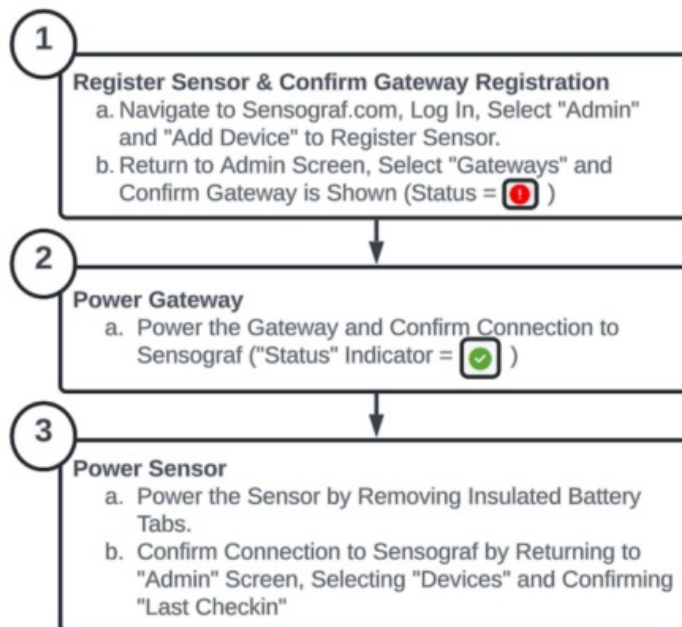
The addition of a Sensocon DataSling WS or WM sensor to the Sensograf device management platform is designed to be simple and fast. Sensocon-supplied gateways are pre-provisioned to begin communication to the platform with little to no further intervention. This should enable instant communication upon sensor power-up. However, it may be necessary at times to ensure that the following fields under "Add Device" on the Sensograf platform are populated correctly:

- DEV EUI: A 16-digit identifier that serves as the address of the device. Pre-populated on platform and located on device product label.
- APP EUI: A 16-digit identifier that tells the network where to route data. Pre-populated on platform and printed on individual label inside sensor box.
- APP KEY: A 32-digit security key for encryption and authentication. Pre-populated on platform and printed on individual label inside sensor box.

If any of these items are inaccessible, please call or email Sensocon customer support via email at [info@sensocon.com](mailto:info@sensocon.com) or telephone at (863)248-2800.

Step-By-Step Process for Registering & Confirming Device on Sensograf Platform

For devices not pre-provisioned by Sensocon.

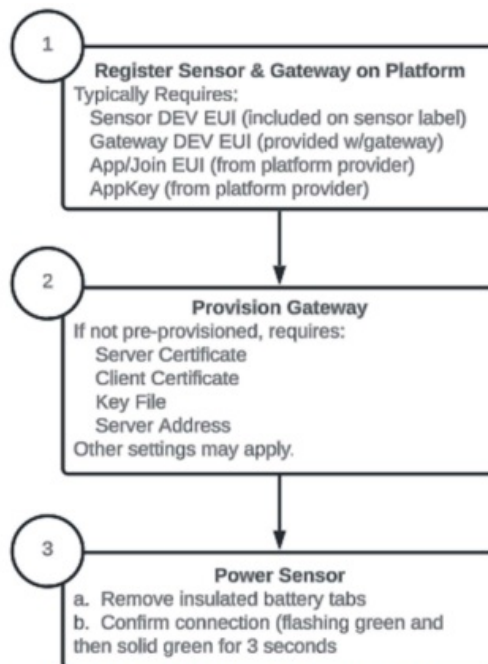


**Figure 4:** Step-by-Step Process to Install and Register Sensograp-Supplied Sensor, Gateway, and Platform

## Registering Device, Connecting to Gateway & 3rd Party Platforms

This section is provided as a general guide. Please refer to the gateway user's manual and platform provider guide for detailed instructions. Both the gateway and device will need to be registered on the 3rd party platform with the proper information for routing traffic from the sensor to the application.

### Step-By-Step Process for Registering & Confirming Device on 3rd Party Platform



**Figure 5:** Step-by-Step Process to Install and Register Sensograp-Supplied Sensor with 3<sup>rd</sup> Party Gateway, & Platform

## Payload Decoder

Sensocon DataSling Sensors are designed to work well with third-party platforms that



have custom payload decoders. Information about how the sensor data is formatted, including encoding details, is included below to streamline setup. This will ensure the platform can interpret the data correctly.

This JavaScript decoder is designed to interpret uplink messages from your LoRaWAN device. It extracts sensor measurements and returns a structured JSON object.

## Decoder Specification

- Input: A byte array containing encoded sensor data.
- Output: A JSON object with human-readable key-value pairs.

## JavaScript Decoder (for Network Servers)

```
// LoRaWAN Uplink Decoder for Sensacon Series WS and WM
function decodeUplink(input) {
  let bytes = input.bytes;
  let port = input.fPort; // Typically used to differentiate payload types
  let index = 0;
  // Initialize data object
  let data = {};
  data.rawHex = Buffer.from(bytes).toString('hex'); // Store raw payload
  data.header = getHead(bytes); // Extract header
  // Remove header byte before parsing measurements bytes = bytes.slice(1);
  // Parse up to 10 measurements (adjust if needed)
  for (let i = 0; i < 10; i++) {
    if (bytes.length < 5) break; // Avoid processing incomplete data
    let measurementChunk = bytes.slice(0, 5);
    bytes = bytes.slice(5);
    let measurement = getMeasurement(measurementChunk);
    if (measurement.key !== "EMPTY") {
      data[measurement.key] = measurement.parsed;
    }
  }
  return { data };
}
```

```

// Extract header byte (usually a device identifier or status flag)
function getHead(d) {
return d.length > 0 ? d[0] : null;
}

// Convert measurement type byte into human-readable format
function getType(typeByte) {
const typeMap = {
0: "pressure",
1: "humidity_temp",
2: "humidity",
3: "batt_voltage",
4: "contact",

5: "velocity", // aka flow
6: "voltage",
7: "current",
8: "temperature",
9: "altitude",
10: "latitude",
11: "light",
12: "longitude",
13: "resistance",
14: "vibration",
15: "x_position",
16: "y_position",
17: "z_position"
18:
19: "gauge_diff_pressure"
};
return typeMap[typeByte] || "EMPTY";
}

// Parse a single measurement (5-byte chunk: 1-byte type + 4-byte float value)
function getMeasurement(d) {
if (d.length !== 5) return { key: "EMPTY", parsed: null };

```

```
let typeKey = getType(d[0]); // Extract type byte
let valueBytes = d.slice(1, 5); // Extract 4-byte float value
// Convert bytes to float32
let parsedValue = new Float32Array(new Uint8Array(valueBytes).buffer)[0];
return { key: typeKey, parsed: parsedValue };
}
// Export decoder for network server integration export { decodeUplink };
```

## **How to Use This Decoder**

### **For ChirpStack (LoRaWAN Network Server)**

1. Go to Device Profiles → Payload Codec
2. Select “Custom JavaScript functions”
3. Copy and paste the above code into the “Decoder” field.

### **For The Things Stack (TTS)**

1. Navigate to Applications → Payload Formatters
2. Select “Custom JavaScript formatter”
3. Paste the code into the Decoder function.

### **For Helium Console**

1. Under Integrations → Custom Functions
2. Add a new decoder function and insert the code.

### **For AWS IoT Core for LoRaWAN**

1. Go to AWS IoT Core Console → LoRaWAN → Devices.
2. Select your device and navigate to Payload Decoders.
3. Choose Custom Decoder.
4. Paste the JavaScript Decoder code from above.
5. Save the changes and verify the decoded output in the AWS IoT MQTT Test Client.

### **For AWS Lambda (Custom Payload Decoder)**

If it is preferred to handle decoding using an AWS Lambda function:

1. Create a new AWS Lambda function with a Node.js runtime.
2. Copy and paste the decoder code into the function.
3. Modify the function handler to process LoRaWAN uplink payloads from AWS IoT Rules.
4. Integrate the function with AWS IoT Rule Engine to automatically decode payloads before forwarding them to an IoT topic, DynamoDB, or another AWS service.

## Example Input & Output

### Raw Payload (Hex)

aa 00 a3cc3c40 02 a0c16d42 01 9a439f42 07 00008040

### Decoded JSON Output

```
{
  "rawHex": "aa00a3cc3c4002a0c16d42019a439f420700008040",
  "pressure": 2.56,
  "humidity": 59.23,
  "humidity_temp": 79.12,
  "current": 4.00
}
```

## LoRaWAN Downlink Command Format

To configure the end device settings, the following commands can be sent to the device.

### Command Structure

- Format: CMD (1 Byte) + Data (2 Bytes) (e.g., 010001)
- Data Encoding:
  - o The unit of data is 1/1000 of the base unit for the measured value.

## Command List

Command Name	Command Code
SET_INTERVAL_CMD	0

SET_PRESSURE_OFFSET_CMD	02
SET_TEMP_OFFSET_CMD	04
SET_HUMIDITY_OFFSET_CMD	06
SET_VOLTAGE_OFFSET_CMD	08
SET_CURRENT_OFFSET_CMD	0A
SET_HUMIDITY_TEMP_OFFSET_CMD	0C
SET_GAUGE_DIFF_PRESSURE_OFFSET_CMD	10

## Notes

- The header byte is used for version control.
- The decoder processes up to 10 measurements; you can modify this limit.
- It gracefully ignores unknown sensor types.
- The output uses floating-point values where applicable.

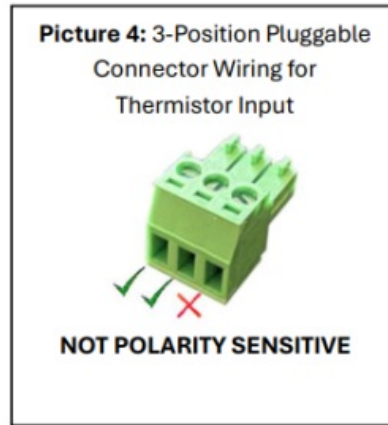
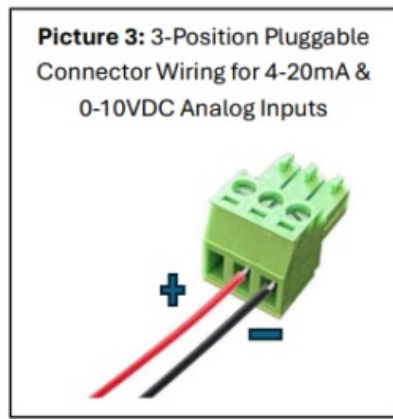
## Troubleshooting

If the sensor does not respond to configuration changes, ensure it is properly connected. Review the configuration settings for accuracy and consult the troubleshooting guide for further assistance.

## Wiring External Inputs

Connect external probes to the pluggable connector provided on the PCB board. The connector needs to be removed from the board for wiring and re-installed when wiring is complete.

- Thermistor and Contact inputs (Sensocon supplied): wiring is not polarity sensitive, see below, right
- Industrial Input Sensors (e.g. 4-20mA, 0-10V): see below, left



## Sensor Power-up Procedure, LED Indicators & Button

To activate the sensor, remove the battery insulation tabs (shown below). The sensor will power up automatically once the batteries are in contact with the battery holder.




Once powered and initialization is complete, the JOIN procedure will commence. The internal LEDs will indicate progress towards joining LoRaWAN Server Network (LNS) via the gateway.



**Picture 3:** Battery Insulating Pull Tabs. Remove to Apply Power.

## LED FUNCTIONS

FUNCTION	LED	DESCRIPTION
Initializing		Solid Yellow LED
Network JOIN		Flashing Green LED

JOIN Success		Solid Green LED (3 Seconds)
Unsuccessful JOIN		Solid Red LED (3 Seconds)
Transmitting Data		Flashing Green LED

**Figure 6: LED Functions**

If JOIN is unsuccessful, ensure gateway is powered, within range, with the correct credentials. The sensor will continue JOIN attempts until successful. See the troubleshooting guide on page 18 in this manual for help.

## **BUTTON FUNCTIONS**

<b>BUTTON FUNCTION</b>	<b>DESCRIPTION</b>
Manual Transmit	Short Press
Test/Manufacture Mode	Short Press During Initialization

**Figure 7: Button Functions**

## **Mounting and Physical Setup**

### **Location**

Select an appropriate location for installation, considering the following:

- **Height and Position:** Install the sensor at a height of at least 1.5 meters above ground level. Transmission will often improve by increasing elevation where possible.
- **Obstacles:** Minimize obstacles such as walls, metal objects, and concrete that could impede wireless communication. Position the sensor near an opening (e.g., window) when possible to enhance signal strength.
- **Distance from Interference Sources:** Keep the sensor a minimum of 1-2 feet away from other electronic devices that might cause interference.

### **Mounting**

Depending on the sensor model, different mounting options are available:

- **Wall Mounting**

- o Use the provided screws or ones more appropriate for your installation to secure the sensor onto a flat surface, ensuring the sensor is firmly attached.

- **Pipe or Mast Mounting:**

- o Use clamp fasteners (not included) to secure the sensor to a pipe or mast. Ensure the sensor is oriented correctly and securely attached to prevent movement.

**Testing and Verification**

- After installation, confirm that the sensor is communicating correctly with the network. Use the device's status indicators or the network platform to verify.

## **Safety and Maintenance**

- Regularly check the sensor for signs of wear or damage, especially if installed in harsh environments.
- Replace batteries as needed as indicated in Sensograf (or 3rd party platform), or according to a planned maintenance schedule that incorporates battery life expectations based on interval selection.
- Clean the sensor gently with a dry cloth. Avoid using water or cleaning agents that could damage the device.

**Note:** Refer to the troubleshooting section on page 18 if any issues arise during installation or operation.

## **Configuration**

### **Initial Setup and Configuration**

Configuring your LoRaWAN sensor correctly is essential for ensuring optimal performance and reliable data transmission. The sensor uses Over-the-Air (OTA) methodology. OTA configuration allows the sensor settings to be adjusted remotely via the Device Management Platform. Configuration of the sensor requires that it be registered on the platform and communicating properly.

- **Configuration Commands:** Access the platform and navigate to the sensor's settings. Use the available configuration commands to adjust parameters such as data reporting interval, alert settings, and sensor scaling.



- **Monitor and Confirm:** After sending the configuration commands, monitor and/or test the changed parameters to ensure that the sensor begins operating with the new settings.

**Configuration Options**

Below are key configuration parameters that can be adjusted from the device platform during setup:

- **Reporting Interval:** Defines how often the sensor transmits data. This can be set to intervals ranging from minutes to hours, depending on the application.
- **Alert Thresholds:** Set alerts as upper and/or lower limits for parameters like temperature, humidity, or pressure to trigger alerts via email and/or text when these limits are breached.
- **Battery Status Monitoring:** Enable battery status monitoring to receive alerts when the battery voltage drops below a specified level.
- **Lost Communications:** Configure the system to alert designated users when a defined number of check-ins are missed.

**Battery Information**

Battery Specifications

Specification	Details
Type	Lithium Manganese Dioxide (Li-MnO <sub>2</sub> )
Nominal Voltage	3.0 V
Cutoff Voltage	2.0V
Capacity	1600 mAh each
Max Continuous Discharge	1500 mA
Operating Temperature	-40°C to 70°C (-40°F to 158°F)
Shelf Life	Up to 10 years

Dimensions	Diameter: 17 mm (0.67 in), Height: 34.5 mm (1.36 in)
Weight	Approx. 16.5g
Self-Discharge Rate	Less than 1% per year
Chemistry	Non-rechargeable Lithium
Protection	No built-in protection circuit

**Figure 10:** Battery Specifications

**Key Battery Features**

- **High Energy Density:** Provides a longer run time compared to other batteries of similar size.
- **Wide Operating Temperature Range:** Suitable for use in extreme temperatures, making it ideal for industrial and outdoor applications.
- **Low Self-Discharge Rate:** Maintains charge during long-term storage, making it reliable for devices that are used infrequently.
- **Long Shelf Life:** Up to 10 years, ensuring reliable performance when stored.

These specifications are typical of CR123A lithium batteries, though exact values may vary slightly depending on the manufacturer.

**Troubleshooting Guide**

SYMPTOM	POSSIBLE CAUSE	SOLUTION
Sensor not connected	Incorrect network settings	Verify the gateway network configuration settings.
		Ensure the sensor is within range of the gateway by testing closer to gateway . Verify connection at close range, then move to final installation location.

Connecting to network	Weak signal	Check for any obstacles blocking the signal and reposition the sensor if necessary and possible.
		Check for any obstacles blocking the signal and reposition the sensor if necessary and possible.
Data not updating on platform	Configuration issues or communication errors	Check the sensor's reporting interval settings.
		Restart the sensor by disconnecting batteries for 10 seconds to clear any misconfigurations.
Short battery life	High frequency of data transmission	Reduce the reporting frequency or adjust alert/notification thresholds to balance transmission frequency with battery life.
	Extreme environmental conditions	Extreme cold or heat can significantly impact battery performance, move to cooler/warmer location if practical.
Incorrect temperature or humidity readings	Environmental interference	Make sure the sensor is installed in a location free from direct sunlight, drafts, or moisture that could affect readings.
	Condensation on humidity sensor	Remove from condensing environment and allow sensor to dry.
Sensor not responding to commands	Power problems	Check the power source and replace the batteries if necessary.

Missed check-ins	Signal interference caused by obstacles such as metal objects or thick walls	Relocate the sensor to an area with fewer obstructions. Elevate the sensor to improve line-of-sight with the gateway.
LED indicators do not turn on	Power supply issues or incorrect installation	Check the battery connections and ensure the sensor is properly installed. Replace batteries if necessary.

**Figure 11:** Troubleshooting Chart

## Customer Support

### Contact Information for Technical Support

At Sensocon, Inc., we are committed to providing exceptional support to ensure that your LoRaWAN sensor operates efficiently and meets your needs. If you encounter any issues or require assistance with your sensor, please do not hesitate to reach out to our customer support team.

#### Contact Information:

##### Address:

Sensocon, Inc.

3602 DMG Dr

Lakeland, FL 33811 USA

Phone: 1-[863-248-2800](tel:863-248-2800)

Email: [support@sensocon.com](mailto:support@sensocon.com)

##### Support Hours:

Our customer support team is available Monday through Friday, 8:00 AM to 5:00 PM EST.

## Compliance and Safety Precautions

### Compliance Statement

This device complies with all applicable national and international standards, including:

Federal Communications Commission (FCC): This device complies with Part 15 of the FCC Rules. Operation is subject to the following conditions:

- This device may not cause harmful interference.
- This device must accept any interference received, including interference that may cause undesired operation.

**FCC Radiation Exposure Statement:** This equipment should be installed and operated with a minimum distance of 20 cm between the radiator and your body. Changes or modifications not expressly approved by the party responsible for compliance could void the user's authority to operate the equipment.

**Industry Canada Compliance:** This device complies with Industry Canada's license-exempt RSS standards.

Operation is subject to the following conditions:

- This device may not cause interference.
- This device must accept any interference, including interference that may cause undesired operation of the device.

**IC Radiation Exposure Statement:** This equipment complies with IC radiation exposure limits set forth for an uncontrolled environment and should be installed and operated with a minimum distance of 20 cm between the radiator and your body.

**RoHS Compliance:** The product complies with the Restriction of Hazardous Substances Directive, ensuring it contains no more than the allowable levels of lead, mercury, cadmium, hexavalent chromium, and other hazardous materials.

## **Safety Precautions**

### **Installation and Use**

Install the device with a minimum distance of 20 cm from all persons. For best results, ensure the device is not co-located with any other transmitter.

### **Battery Safety**

The device contains lithium batteries. Do not recharge, disassemble, heat above 100°C (212°F), or incinerate. Replace only with approved battery types as specified in this manual. Ensure proper handling and disposal in accordance with local regulations.

### **Handling and Maintenance:**

Avoid exposure to extreme temperatures, water, or moisture beyond the rated enclosure protection level (IP65). Handle the device with care to avoid damage. Improper handling may void warranty and compliance status.

### **Regulatory Warnings:**

Changes or modifications not expressly approved by the responsible party for compliance could void the user's authority to operate the equipment. Ensure that all local and national regulations are adhered to when deploying and operating this device.

## **Legal Notices**

### **Disclaimers**

The information in this manual is provided "as is" without any warranties of any kind, either express or implied, including but not limited to the implied warranties of merchantability, fitness for a particular purpose, or noninfringement. While every effort has been made to ensure the accuracy of the information provided in this manual, Sensicon, Inc. assumes no responsibility for errors, omissions, or inaccuracies and shall not be liable for any damages arising from the use of the information contained herein.

**Product Usage:** The LoRaWAN sensor is intended for monitoring and data collection purposes only. It should not be used as the sole means of monitoring critical conditions that could result in harm to persons, property, or the environment. Sensicon, Inc. shall not be liable for any direct, indirect, incidental, or consequential damages resulting from the misuse or misapplication of this product.

**Regulatory Compliance:** It is the user's responsibility to ensure that the installation and use of this product comply with all applicable local, state, and federal regulations. Sensicon, Inc. assumes no liability for improper installation or use of the product that does not comply with applicable laws and standards.

**Modifications and Unauthorized Use:** Unauthorized modifications, alterations, or repairs to the product void the warranty and may affect the performance, safety, and regulatory compliance of the device. Sensicon, Inc. is not responsible for damages resulting from any unauthorized use or modification of the product.

**End-of-Life and Disposal:** This product contains materials that may be hazardous to the environment. Proper disposal in accordance with local regulations is required. Do not dispose of this product in household or general waste facilities.

**Firmware and Software Updates:** Sensicon, Inc. reserves the right to make changes

to the product, firmware, or software without prior notice. Regular updates may be required to ensure optimal performance and security of the device. Sensocn, Inc. does not guarantee backward compatibility with all previous versions of firmware or software.

**Limitation of Liability:** To the maximum extent permitted by applicable law, Sensocn, Inc. disclaims any liability for any personal injury, property damage, or any incidental, special, indirect, or consequential damages whatsoever, including without limitation, damages for loss of profits, data, business, or goodwill, arising out of or related to the use, inability to use, or misuse of this product, even if advised of the possibility of such damages.

**Intellectual Property Rights:** All trademarks, product names, and company names or logos cited herein are the property of their respective owners. No part of this document may be reproduced or transmitted in any form or by any means, electronic or mechanical, for any purpose without the express written permission of Sensocn, Inc.

**Changes to This Document:** Sensocn, Inc. reserves the right to revise this document and to make changes to its content without obligation to notify any person or organization of such revisions or changes. By using this product, you agree to the terms and conditions set forth in this disclaimer.

## **Trademarks and Copyright Notices**

### **Trademarks:**

Sensocn, Inc., the Sensocn logo, and all product names, trademarks, logos, and brands are property of Sensocn, Inc. or its subsidiaries. All other trademarks cited herein are the property of their respective owners.

- The use of any third-party trademarks, product names, or brand names does not imply endorsement or affiliation with Sensocn, Inc. unless otherwise stated.

### **Copyright Notice:**

- © 2024 Sensocn, Inc. All rights reserved. This manual and the information contained herein are the property of Sensocn, Inc. and are protected by United States and international copyright laws.
- No part of this manual may be reproduced, distributed, or transmitted in any form or by any means, including photocopying, recording, or other electronic or mechanical

methods, without the prior written permission of Sensocon, Inc., except in the case of brief quotations embodied in critical reviews and certain other noncommercial uses permitted by copyright law.

**Proprietary Information:**

- The information contained in this document is proprietary to Sensocon, Inc. and is provided solely for the purpose of operating and maintaining Sensocon products. It must not be disclosed to any third party without the express written consent of Sensocon, Inc.

**Restrictions on Use:**

- The content of this manual is provided for informational purposes only and may be subject to change without notice. Sensocon, Inc. makes no representations or warranties, either express or implied, with respect to the content of this manual or the products described herein.

**No License:**

- Except as expressly provided herein, nothing in this document shall be construed as conferring any license under any of Sensocon, Inc.'s intellectual property rights, whether by implication, estoppel, or otherwise.

**Updates and Revisions:**

- Sensocon, Inc. reserves the right to make changes to this document and the product described herein without notice. Sensocon, Inc. assumes no liability for inaccuracies or omissions and specifically disclaims any commitment to update or keep current the information contained in this document.

For any questions regarding trademarks, copyright notices, or the use of this document, please contact Sensocon, Inc. at [info@sensocon.com](mailto:info@sensocon.com).

**Limited Warranty**



SENSOCON warrants its products to be free from defects in materials and workmanship for a period of one (1) year from the date of shipment, subject to the following terms and conditions: Without charge, SENSOCON will repair, replace, or refund the purchase price at SENSOCON's option products found to be defective in materials or workmanship within the warranty period; provided that:

- i. the product has not been subjected to abuse, neglect, accident, incorrect wiring not our own, improper installation or servicing, or use in violation of labels or instructions provided by SENSOCON;
- ii. the product has not been repaired or altered by anyone except SENSOCON;
- iii. the maximum ratings label and serial number or date code have not been removed, defaced, or otherwise changed;
- iv. examination discloses, in the judgment of SENSOCON, the defect in materials or workmanship developed under normal installation, use and service; and
- v. SENSOCON is notified in advance of and the product is returned to SENSOCON transportation prepaid before expiration of the warranty period.

THIS EXPRESS LIMITED WARRANTY IS IN LIEU OF AND EXCLUDES ALL OTHER REPRESENTATIONS MADE BY ADVERTISEMENTS OR BY AGENTS AND ALL OTHER WARRANTIES, BOTH EXPRESS AND IMPLIED. THERE ARE NO IMPLIED WARRANTIES OF MERCHANTABILITY OR OF FITNESS FOR A PARTICULAR PURPOSE FOR GOODS COVERED HEREUNDER.

**Revision History**

**Document Version History**



Version	Date	Change(s)
1.0	9/23/2024	Initial Version

**Figure 12:** Revision History Chart

10/1/24 REV 1



# Documents / Resources

 <small>User's Manual for WS and WM Series Detailing™ LoRaWAN® Wireless Sensors</small> 	<a href="#">Sensocon WM Series Wireless Humidity Plus Temperature Sensor [pdf]</a> User Manual WS, WM, WM Series Wireless Humidity Plus Temperature Sensor, WM Series, Wireless Humidity Plus Temperature Sensor, Humidity Plus Temperature Sensor, Temperature Sensor
--	---

## References

- [User Manual](#)

SENSOCOCON

Humidity Plus Temperature Sensor, SENSOCOCON, Temperature Sensor, Wireless Humidity Plus Temperature Sensor, wm, WM Series, WM Series Wireless Humidity Plus Temperature Sensor, WS

## Leave a comment

Your email address will not be published. Required fields are marked \*

Comment \*

Name

Email

Website

☐ Save my name, email, and website in this browser for the next time I comment.

**Post Comment**

**Search:**

e.g. whirlpool wrf535swhz

**Search**

[Manuals+](#) | [Upload](#) | [Deep Search](#) | [Privacy Policy](#) | [@manuals.plus](#) | [YouTube](#)

This website is an independent publication and is neither affiliated with nor endorsed by any of the trademark owners. The "Bluetooth®" word mark and logos are registered trademarks owned by Bluetooth SIG, Inc. The "Wi-Fi®" word mark and logos are registered trademarks owned by the Wi-Fi Alliance. Any use of these marks on this website does not imply any affiliation with or endorsement.