



SENSITIVITY Dual Mode Ac Voltage Detector Owner's Manual

[Home](#) » [SENSITIVITY](#) » SENSITIVITY Dual Mode Ac Voltage Detector Owner's Manual 

Contents

- [1 SENSITIVITY Dual Mode Ac Voltage Detector Owner's Manual](#)
- [2 1. Warning](#)
- [3 2. Panel](#)
- [4 3. Operation Manual](#)
- [5 4. Technical specifications](#)
- [6 Battery replacement](#)
- [7 Read More About This Manual & Download PDF:](#)
- [8 Documents / Resources](#)
- [9 Related Posts](#)

SENSITIVITY Dual Mode Ac Voltage Detector Owner's Manual



1. Warning

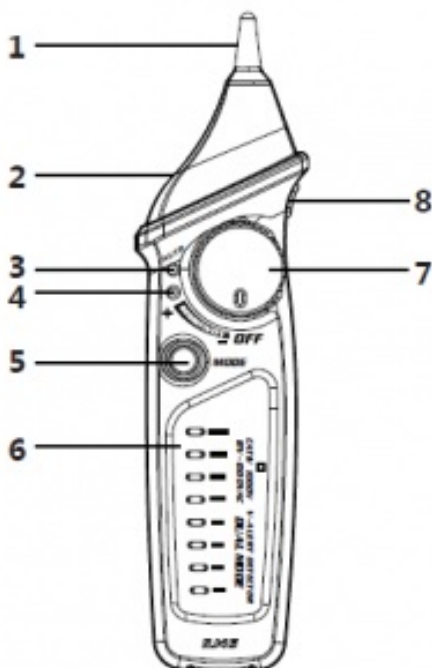
To avoid possible electric shock or personal injury: To use this tester, you can use this tester to make sure that the protection function is effective. If the indicator is not lit, do not use. Use the previous knowledge of the power source of the tester to confirm that the product is in a good working position. When using this tester, even in the absence of sound and light alarm, voltage may still exist. The tester only indicates the effective voltage when the AC voltage is generated enough for the electrostatic field. If the field is very low, the tester may not be detected. The tester may be affected by the following factors, including but not limited to: Shielding wire/cable, thickness and type of insulation layer, distance from voltage source, complete insulation layer, design difference of socket, etc. If the tester has been damaged, or tester cannot work normally, please do not use.

Do not put more than the rated voltage marked on tester. More than 30 V AC voltage testing, special care, to prevent electric shock risk. Compliance with the national security standards.

To comply with the regulations of the local government and the local authorities.



2. Panel



- ①V~Alert sensor
- ②Spotlight
- ③Automatic sensitivity mode indicator light.
- ④Power indicator
- ⑤Sensitivity mode switch button.
- ⑥ Signal strength indicator light— strong(red), moderate(yellow), low(green)
- ⑦Switch and sensitivity adjustment knob.
- ⑧Spotlight switch

3. Operation Manual

1. Turn on/off.

Turn on: rotate switch and sensitivity adjustment knob, sensitivity automatic mode indicator light and signal strength indicator light (high, medium and low), blink once, start up by default as sensitivity automatic mode, mode indicator light and power indicator light are always on. Turn OFF: turn the knob to OFF when the tester is on, the power indicator light is OFF.

2. Automatic/manual mode selection.

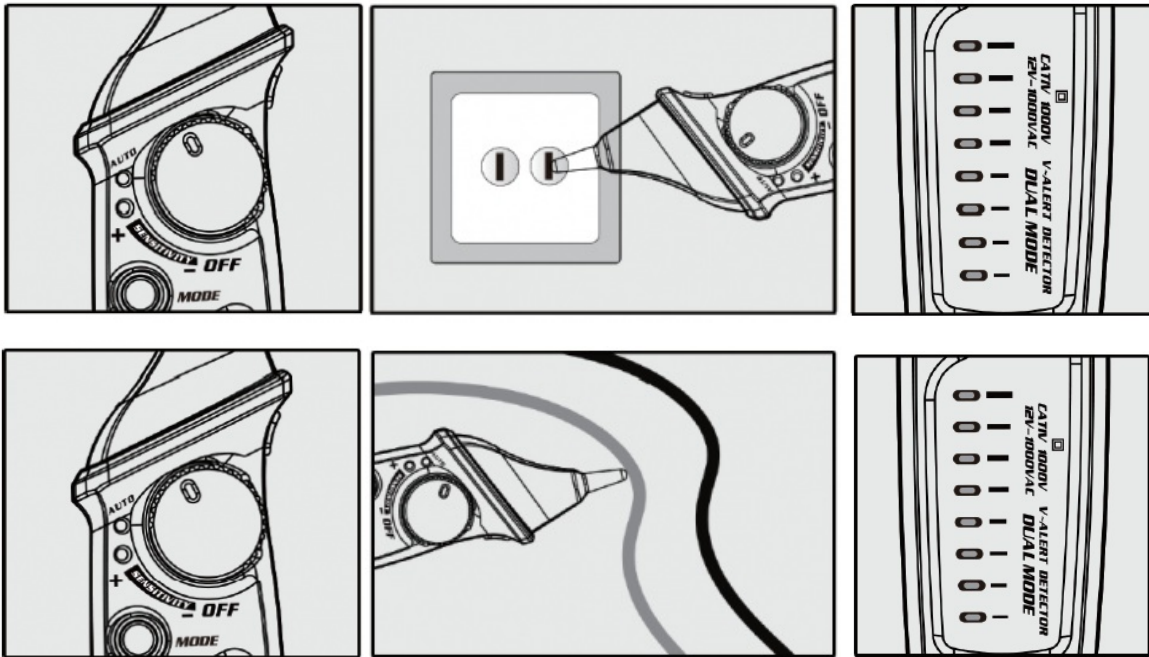
The default setting is automatic, but the range of the voltage range is approximately 48-1000v, and by pressing the MODE key, you can switch to the manual adjusting MODE, the sensitive auto-mode indicator is out, and by the manual spinning switch and the sensitivity adjusting the knob to adjust the sensitivity, the voltage is set to the highest and the voltage range is approximately 12 to 1000 v. Press the MODE key again to return to auto MODE

3. Turn on/off spotlight

Turn on the spotlight: in the test on state, press the key of the flashlight and turn on the torch. Turn the spotlight off: under the on condition of the spotlight, press the key of the spotlight and turn off the spotlight. If the flashlight is not turned off, it will be off in about 3 minutes.

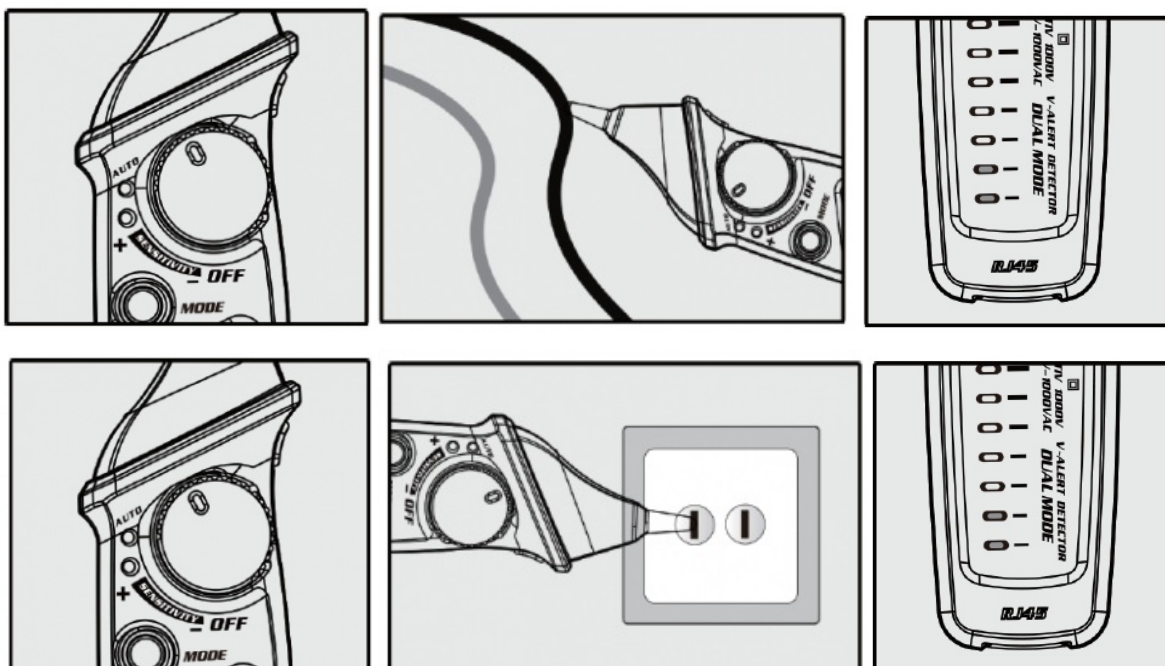
4. Ac voltage detection

Put the sensor head into the power outlet or near the electrified lead wire, and when the tester detects the ac voltage signal, the voltage signal flicks the signal, and the test is based on the intensity of the signal detected, lighting the corresponding signal strength indicator lights (high, medium, low), and the buzzer emits different frequencies of alarm sound. When the ac voltage signal is sensed, the green signal intensity indicator (low) is lit. When the high ac voltage signal is sensed, the yellow signal intensity indicator light (middle) is lit; When the highest ac voltage signal is sensed, the red signal strength indicator light (high) is lit.



5. Neutral wire/live wire check

Separate the two wires to be detected as far as possible, and push the inductive head of the tester close to the wire, and plug the probe into the jack, and the tester detects that one of the strong induced signal is live wire, and the weak or non-sensing signal of the induction signal is neutral wire.



6. Automatic shutdown function.

When the tester does not operate within about 5 minutes and does not detect the voltage signal, the tester will

shut down automatically, and after automatic shutdown, press the MODE button to wake up.

7. **Battery undervoltage indication.**

When the battery voltage is below about 6.5v, the power indicator light will flash for 3 times, and the buzzer will turn off automatically after a sound. Please replace the battery in time, press the MODE key once after the battery is changed, if the switch knob is in the power-on position, then turn on the machine; otherwise, turn the switch knob to the startup position, and then start the machine.

4. **Technical specifications**

Ac voltage range:	About 12 ~1000V (sensitive manual mode)	Approximately 48 ~1000V (automatic mode of sensitivity)
Frequency	50 Hz /60Hz	
Alarm mode	Sound and light alarm	
Spotlight	White LED light	
Auto power-off	√	
Battery undervoltage indication.	√	
Neutral wire/live wire check	According to the signal strength	

V~Alert sensitivity	Automatic selection of 3 sensitivity (high, medium and low)
V~Alert signal strength indicator mode.	High (red), medium (yellow), low (green) with different frequency of alarm and different colors of LED
Use of temperature	0~40°C
Storage temperature	-10~50°C
Altitude	<2000m
Security level	CE CAT.II 1000V
Power supply	1 x 9V battery
Product size	~174*47*35mm
Product weight	~68g

Battery replacement

1. Open the battery cover.
2. Remove the old battery.
3. Load the new battery according to the positive and negative battery.

Warning: in order to avoid shock, the tester should not be used before it is buckled in place.

Read More About This Manual & Download PDF:

Documents / Resources

	<p>SENSITIVITY Dual Mode Ac Voltage Detector [pdf] Owner's Manual Dual Mode Ac Voltage Detector, MS8242A</p>
---	--